



NEXT TIME YOU'RE AT AVL, LOOK UP

Message from Lew Bleiweis, President + CEO



Take a look at that steel. The transformation of our region's airport is more visible now than ever before, and changes are happening daily. I am genuinely excited about the reality of what's coming for all of you!

What you can see growing tall is the new north concourse, which, when completed, will have much more space for you. In about 15 months, we will open the concourse and its seven gates for passenger use. The concourse will feel airy, bright, and spacious, with design touches that are inspired by our region's natural beauty. I can't wait, and we'll share our progress along the way and always invite you to join us in our excitement.

I also want to thank each and every one of you for your continued patronage and patience during this transformative time. The team at AVL is working hard to provide efficient and customer-friendly services while we simultaneously build anew.

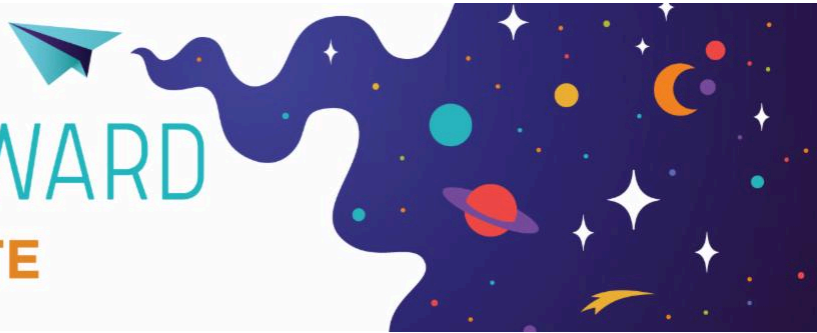
A few new services are now in place to make your journey more efficient. We have added a [parking guidance system](#) in the parking garage so you can easily find an open parking space when you see a corresponding green light overhead. Also related to parking, we now include a [live feed to parking availability on our website](#) to assist passengers in their planning.

It is our goal to continually implement meaningful enhancements for our customers, especially during this intense period of construction. Your choice to use AVL has led to the need for infrastructure growth, and the new AVL will be amazing.

Stay tuned for more updates along the way. And we hope to see you soon for your next trip.

Blue skies,
Lew Bleiweis, President + CEO

AVL FORWARD UPDATE



NEW NORTH CONCOURSE TAKING SHAPE



Work is quickly progressing on the new north concourse. Steel work is moving along quickly, and horizontal steel work for the vertical decking is now taking place. The framework for the north concourse is expected to be completed in March!

Here are some interesting stats about the new north concourse:

- 4,097 square feet total area of glass overlooking the airfield
- 7 gates
- The south concourse will be comprised of over 826 tons of structural steel

The expected completion date for the north concourse is summer 2025.

[LEARN MORE ABOUT AVL FORWARD](#)





REAL QUESTIONS REAL ANSWERS

AVL FORWARD

WE'RE LISTENING

And answering your questions

From Facebook: "We need a bigger airport. Timeframe?" – Marilyn K.

We do need a bigger airport, and we are hard at work making that happen in the near future! We officially broke ground in August of 2023 and the core part of the project is projected to take about

3.5 years.

Phase One: This phase includes the demolition of the existing north concourse and construction of the new one. **The new north concourse is expected to be open and operational in summer 2025.** This phase also includes expansion of the north end of the ticket lobby, a temporary TSA checkpoint and partial expansion of the baggage claim.

Phase Two: The south concourse will be demolished followed by an approximate 1.5 year period of construction of a new south concourse, second-level concessions plaza, the southern expansion of the ticket lobby, the continued expansion of baggage claim, construction of the new grand lobby and permanent TSA security check point. Upon completion of this phase there will be twelve gates and boarding bridges and expansive space in the new terminal.

Phase Three: There will still be some "back of house" construction, demolition and clean up occurring for about another year.



PARKING ENFORCEMENT CHANGES COMING

Park in designated spaces only

With the addition of new parking lots, AVL will now be enforcing parking rules more consistently. We are asking all customers to park in designated parking spaces only. All vehicles in undesignated spaces may be ticketed and towed.

Signs and barriers are being installed, and we are also including signs with easy links to our website where parking information and a parking map can be found.

Parking in undesignated areas can cause safety issues. Thank you for your understanding!

[INFO ABOUT PARKING AT AVL>](#)



DEICING PLANES

How does it work and why do airlines do it?

If you have flown in the winter, you may have encountered the phenomenon of your plane being sprayed down before taking off. What you experienced was your plane being deiced. This is a crucial step that is sometimes needed during the cold winter months to allow planes to take off safely.

[READ MORE](#)

6 AIRLINES. 27 NONSTOP DESTINATIONS. LET'S GO!



[BOOK YOUR FLIGHT TODAY](#)



Copyright © 2024. All Rights Reserved.

Greater Asheville Regional Airport Authority | 61 Terminal Drive, Suite 1, Fletcher, NC 28732



Try email marketing for free today!