



DECEMBER 2018

BOARD INFORMATION PACKAGE



**MEMORANDUM**

TO: Members of the Airport Authority

FROM: Lew Bleiweis, Executive Director

DATE: December 14, 2018

**Financial Report ([document](#))**

**Informational Reports:**

- A. October, 2018 Traffic Report ([document](#))
- B. October, 2018 Monthly Financial Report ([document](#))
- C. December, 2018 Development/Project Status Report ([document](#))
- D. Airport Facilities Review for Third Quarter ([document](#))

**Asheville Regional Airport  
Executive Summary  
October-18**

**AIRPORT ACTIVITY**

	Month	Variance to Prior Year	Calendar Year to Date	Variance to Prior Year
<b>Passenger Enplanements</b>	60,054	17.6%	461,677	17.2%
<b>Aircraft Operations</b>				
Commercial	2,063	(1.1%)	16,050	1.2%
Scheduled Flights	765	1.6%		
Flight Cancellations	5			
Seats	73,697	23.5%	556,357	14.2%
Load Factor	81.5%	(4.8%)	83.0%	2.7%
General Aviation	3,246	(31.7%)	33,535	(7.5%)
Military	365	(20.7%)	2,756	(30.8%)

**FINANCIAL RESULTS**

	Month	Variance to Budget	Fiscal Year to Date	Variance to Budget
<b>Operating Revenues</b>	\$ 1,193,707		\$ 4,668,737	
<b>Operating Expenses</b>	714,938		2,569,815	
<b>Net Operating Revenues before Depreciation</b>	<u>\$ 478,769</u>		<u>\$ 2,098,922</u>	
<b>Net Non-Operating Revenues</b>	<u>\$ 440,875</u>		<u>\$ 1,487,456</u>	
<b>Grants:</b>				
FAA AIP Grants	\$ 926,111		\$ 834,286	
NC Dept of Transportation Grants	-		2,024,831	
Total	<u>\$ 926,111</u>		<u>\$ 2,859,117</u>	

**CASH**

Restricted	\$ 10,777,940
Designated for O&M Reserve	4,608,465
Designated for Emergency Repair	650,000
Unrestricted, Undesignated	19,497,654
Total	<u>\$ 35,534,059</u>

**RECEIVABLES PAST DUE**

	Total	1-30 Days	31-60 Days	Over 60 Days
Advertising Customers	21,047	7,900	2,800	10,347
Allegiant	12,597	1,474	1,037	10,086
American	4,376	-	-	4,376
Avis	23,936	231	12,906	10,799
Budget	15,079	180	307	14,591
Delta	1,539	460	-	1,079
Elite Airways	9,651	351	3,164	6,136
Enterprise	18,861	5,684	6,499	6,678
TSA	9,774	9,600	0	174
FAA	26,248	13,384	-	12,864
Hertz	17,530	942	14,749	1,840
Signature	3,667	-	-	3,667
Skywest	33,685	-	-	33,685
Spirit	1,395	1,395	-	-
United	2,920	-	611	2,309
Vanguard	31,904	10,108	13,385	8,411
Miscellaneous	12,670	1,653	3,744	7,273
Total	<u>\$ 246,879</u>	<u>\$ 53,361</u>	<u>\$ 59,202</u>	<u>\$ 134,316</u>
% of Total Receivables	<u>23.48%</u>			

Note: Excludes balances paid subsequent to month-end.

Travelers Insurance	467,576	1,050	465,616	910
---------------------	---------	-------	---------	-----

**REVENUE BONDS PAYABLE**

	Original Amount	Current Balance
Parking Garage Revenue Bond, Series 2016A	\$ 15,750,000	\$ 15,750,000
Parking Garage Taxable Revenue Bond, Series 2016B	5,250,000	3,080,000
	<u>\$ 21,000,000</u>	<u>\$ 18,830,000</u>

**CAPITAL EXPENDITURES**

Annual Budget	\$ 31,516,785
Year-to-Date Spending	\$ 1,709,190



## MEMORANDUM

TO: Members of the Airport Authority  
FROM: Lew Bleiweis, A.A.E., Executive Director  
DATE: December 14, 2018

### ITEM DESCRIPTION – Information Section Item A

October, 2018 Traffic Report – Asheville Regional Airport

### SUMMARY

October, 2018 overall passenger traffic numbers were up 17.6% compared to the same period last year. Passenger traffic numbers reflect a 17.6% increase in passenger enplanements from October, 2017. Enplanements for Fiscal Year to Date total 218,215 which is a 12.5% increase over the same period last year.

### AIRLINE PERFORMANCE

Allegiant Airlines: Year over Year passenger enplanements for Allegiant in October 2018 were up by 39.9%. There were no flight cancellations for the month.

American Airlines: American's October 2018 passenger enplanements represent a 3.4% increase over the same period last year. There were five (5) flight cancellations for the month.

Delta Airlines: Delta's October 2018 enplanements were flat compared to October 2017. There were no flight cancellations for the month.

United Airlines: In October 2018, United Airlines saw a decrease in enplanements by 22.0% over the same period last year. There were no flight cancellations for the month.

# Monthly Traffic Report

## Asheville Regional Airport

### October 2018



Category	Oct 2018	Oct 2017	Percentage Change	*CYTD-2018	*CYTD-2017	Percentage Change	*MOV12-2018	*MOV12-2017	Percentage Change
<b>Passenger Traffic</b>									
Enplaned	60,054	51,073	17.6%	461,677	393,855	17.2%	545,219	463,086	17.7%
Deplaned	<u>60,006</u>	<u>51,022</u>	17.6%	<u>460,771</u>	<u>392,397</u>	17.4%	<u>547,611</u>	<u>461,526</u>	18.7%
<b>Total</b>	<b>120,060</b>	<b>102,095</b>	<b>17.6%</b>	<b>922,448</b>	<b>786,252</b>	<b>17.3%</b>	<b>1,092,830</b>	<b>924,612</b>	<b>18.2%</b>
<b>Aircraft Operations</b>									
Airlines	928	784	18.4%	7,444	6,510	14.3%	8,774	7,572	15.9%
Commuter/ Air Taxi	<u>1,135</u>	<u>1,301</u>	-12.8%	8,606	9,351	-8.0%	10,235	10,489	-2.4%
<b>Subtotal</b>	<u>2,063</u>	<u>2,085</u>	-1.1%	<u>16,050</u>	<u>15,861</u>	1.2%	<u>19,009</u>	<u>18,061</u>	5.2%
General Aviation	3,246	4,756	-31.7%	33,535	36,263	-7.5%	40,113	42,376	-5.3%
Military	<u>365</u>	<u>460</u>	-20.7%	<u>2,756</u>	<u>3,983</u>	-30.8%	<u>3,462</u>	<u>4,536</u>	-23.7%
<b>Subtotal</b>	<u>3,611</u>	<u>5,216</u>	-30.8%	<u>36,291</u>	<u>40,246</u>	-9.8%	<u>43,575</u>	<u>46,912</u>	-7.1%
<b>Total</b>	<b>5,674</b>	<b>7,301</b>	<b>-22.3%</b>	<b>52,341</b>	<b>56,107</b>	<b>-6.7%</b>	<b>62,584</b>	<b>64,973</b>	<b>-3.7%</b>
<b>Fuel Gallons</b>									
100LL	15,815	16,818	-6.0%	138,202	138,819	-0.4%	162,679	164,156	-0.9%
Jet A (GA)	155,462	163,450	-4.9%	1,242,350	1,248,439	-0.5%	1,428,181	1,448,055	-1.4%
<b>Subtotal</b>	<u>171,277</u>	<u>180,268</u>	-5.0%	<u>1,380,552</u>	<u>1,387,258</u>	-0.5%	<u>1,590,860</u>	<u>1,612,211</u>	-1.3%
Jet A (A/L)	<u>450,048</u>	<u>411,553</u>	9.4%	<u>3,577,533</u>	<u>2,958,897</u>	20.9%	<u>4,172,857</u>	<u>3,423,645</u>	21.9%
<b>Total</b>	<b>621,325</b>	<b>591,821</b>	<b>5.0%</b>	<b>4,958,085</b>	<b>4,346,155</b>	<b>14.1%</b>	<b>5,763,717</b>	<b>5,035,856</b>	<b>14.5%</b>

\*CYTD = Calendar Year to Date and \*Mov12 = Moving Twelve Months.

Wednesday, November 28, 2018

# Airline Enplanements, Seats, and Load Factors

## Asheville Regional Airport

October 2018



	Oct 2018	Oct 2017	Percentage Change	*CYTD-2018	*CYTD-2017	Percentage Change
<b>Allegiant Air</b>						
Enplanements	23,932	17,109	39.9%	169,601	120,343	40.9%
Seats	29,405	21,277	38.2%	201,741	143,446	40.6%
Load Factor	81.4%	80.4%	1.2%	84.1%	83.9%	0.2%
<b>American Airlines</b>						
Enplanements	11,904	11,512	3.4%	97,924	88,423	10.7%
Seats	14,868	13,299	11.8%	121,193	116,763	3.8%
Load Factor	80.1%	86.6%	-7.5%	80.8%	75.7%	6.7%
<b>Delta Air Lines</b>						
Enplanements	13,604	13,691	-0.6%	123,262	116,389	5.9%
Seats	15,020	14,909	0.7%	141,210	142,527	-0.9%
Load Factor	90.6%	91.8%	-1.4%	87.3%	81.7%	6.9%
<b>Elite Airways</b>						
Enplanements	0	253	-100.0%	1,056	1,251	-15.6%
Seats	0	450	-100.0%	2,070	2,420	-14.5%
Load Factor	#Num!	56.2%	#Type!	51.0%	51.7%	-1.3%
<b>Spirit Airlines</b>						
Enplanements	3,979	0	#Div/0!	5,991	0	#Div/0!
Seats	6,324	0	#Div/0!	11,988	0	#Div/0!
Load Factor	62.9%	#Num!	#Type!	50.0%	#Num!	#Type!
<b>United Airlines</b>						
Enplanements	6,635	8,508	-22.0%	63,843	67,449	-5.3%
Seats	8,080	9,745	-17.1%	78,155	82,099	-4.8%
Load Factor	82.1%	87.3%	-5.9%	81.7%	82.2%	-0.6%

	Oct 2018	Oct 2017	Percentage Change	*CYTD-2018	*CYTD-2017	Percentage Change
<b>Totals</b>						
Enplanements	60,054	51,073	17.6%	461,677	393,855	17.2%
Seats	73,697	59,680	23.5%	556,357	487,255	14.2%
Load Factor	81.5%	85.6%	-4.8%	83.0%	80.8%	2.7%

# Airline Flight Completions Asheville Regional Airport

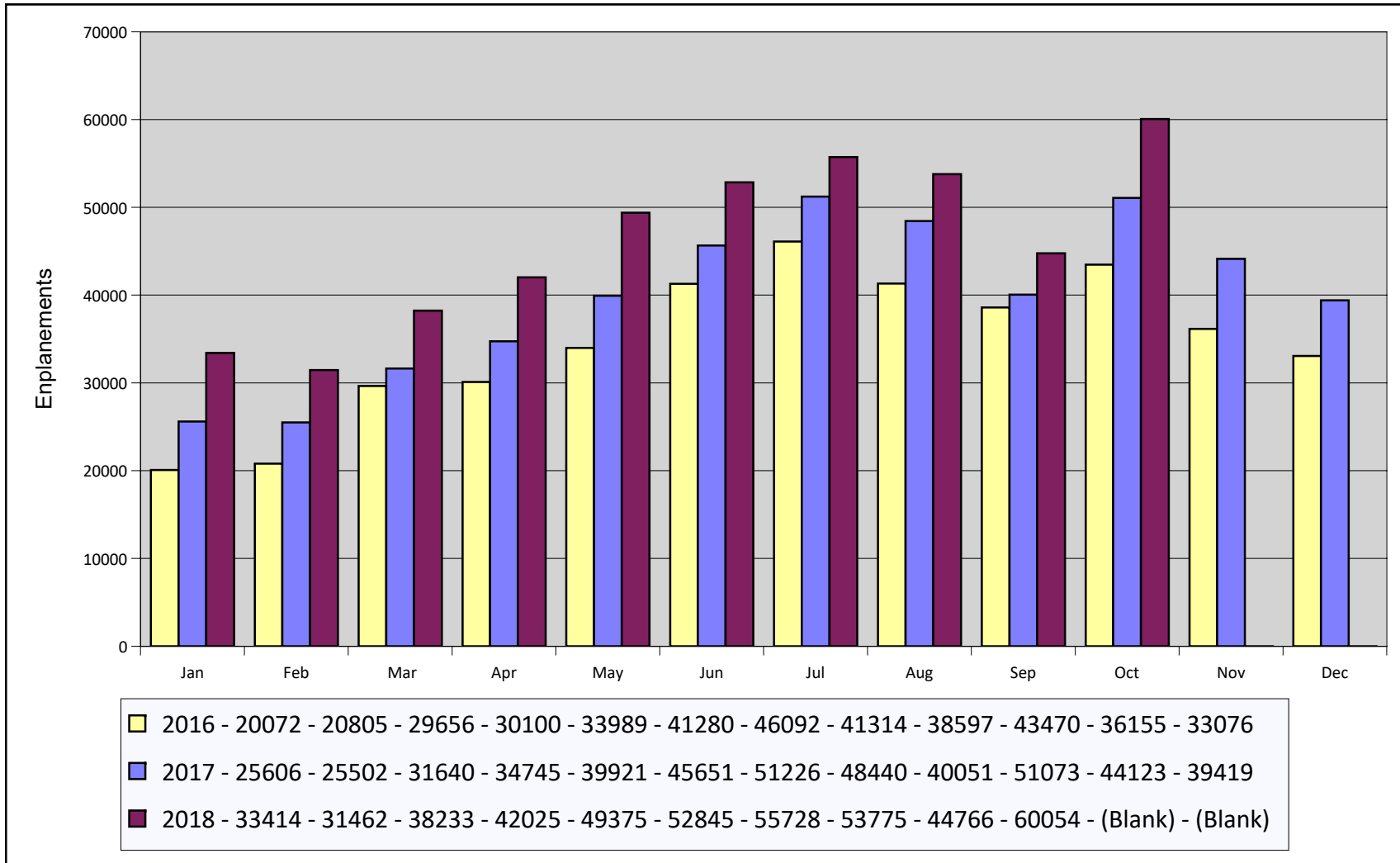
October 2018



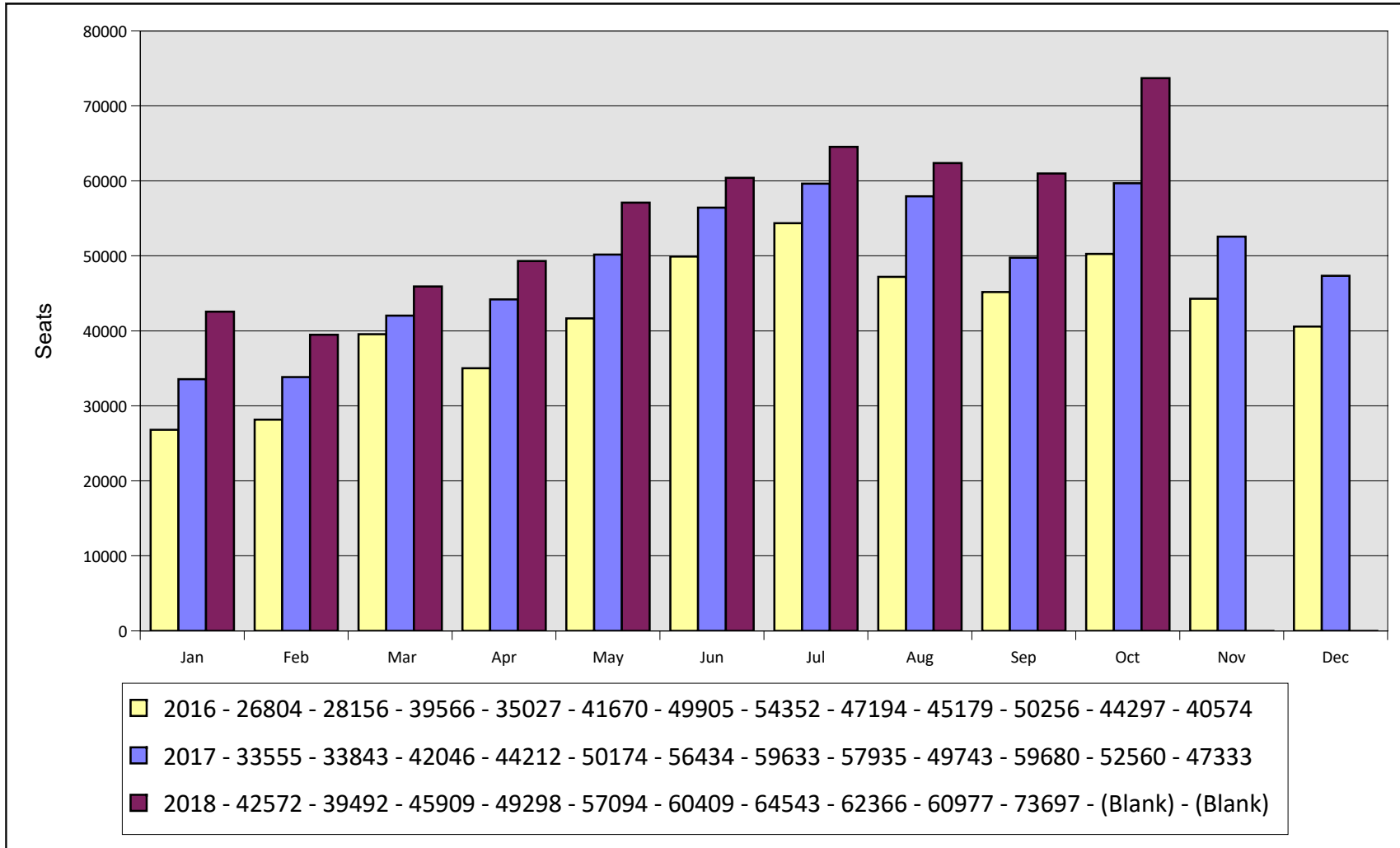
Airline	Scheduled Flights	Field	Cancellations Due To			Total Cancellations	Percentage of Completed Flights
			Mechanical	Weather	Other		
Allegiant Air	168	0	0	0	0	0	100.0%
American Airlines	227	0	2	3	0	5	97.8%
Delta Air Lines	202	0	0	0	0	0	100.0%
Elite Airways	0	0	0	0	0	0	#Num!
Spirit Airlines	34	0	0	0	0	0	100.0%
United Airlines	134	0	0	0	0	0	100.0%
<b>Total</b>	<b>765</b>	<b>0</b>	<b>2</b>	<b>3</b>	<b>0</b>	<b>5</b>	<b>99.3%</b>



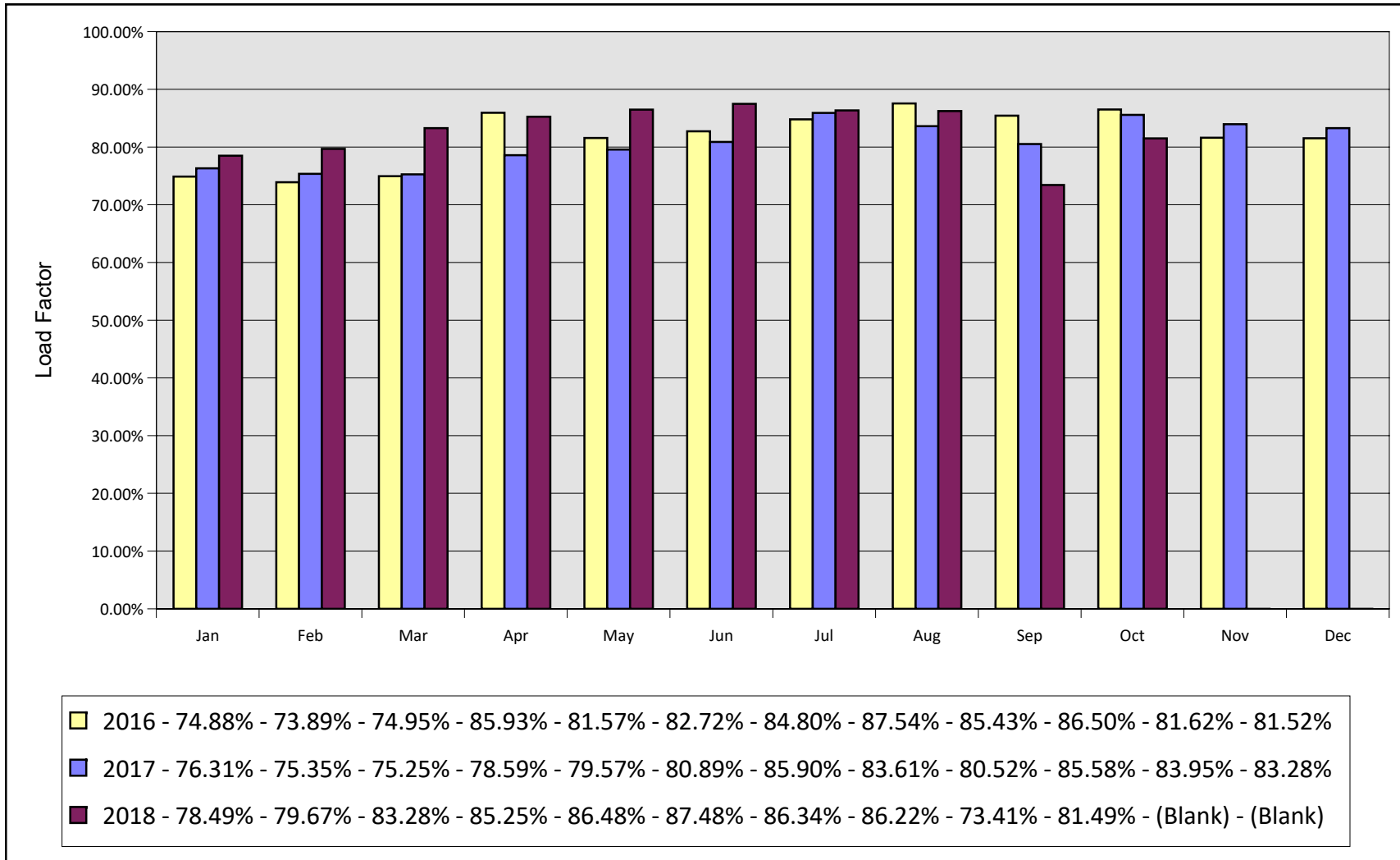
# Monthly Enplanements By Year Asheville Regional Airport



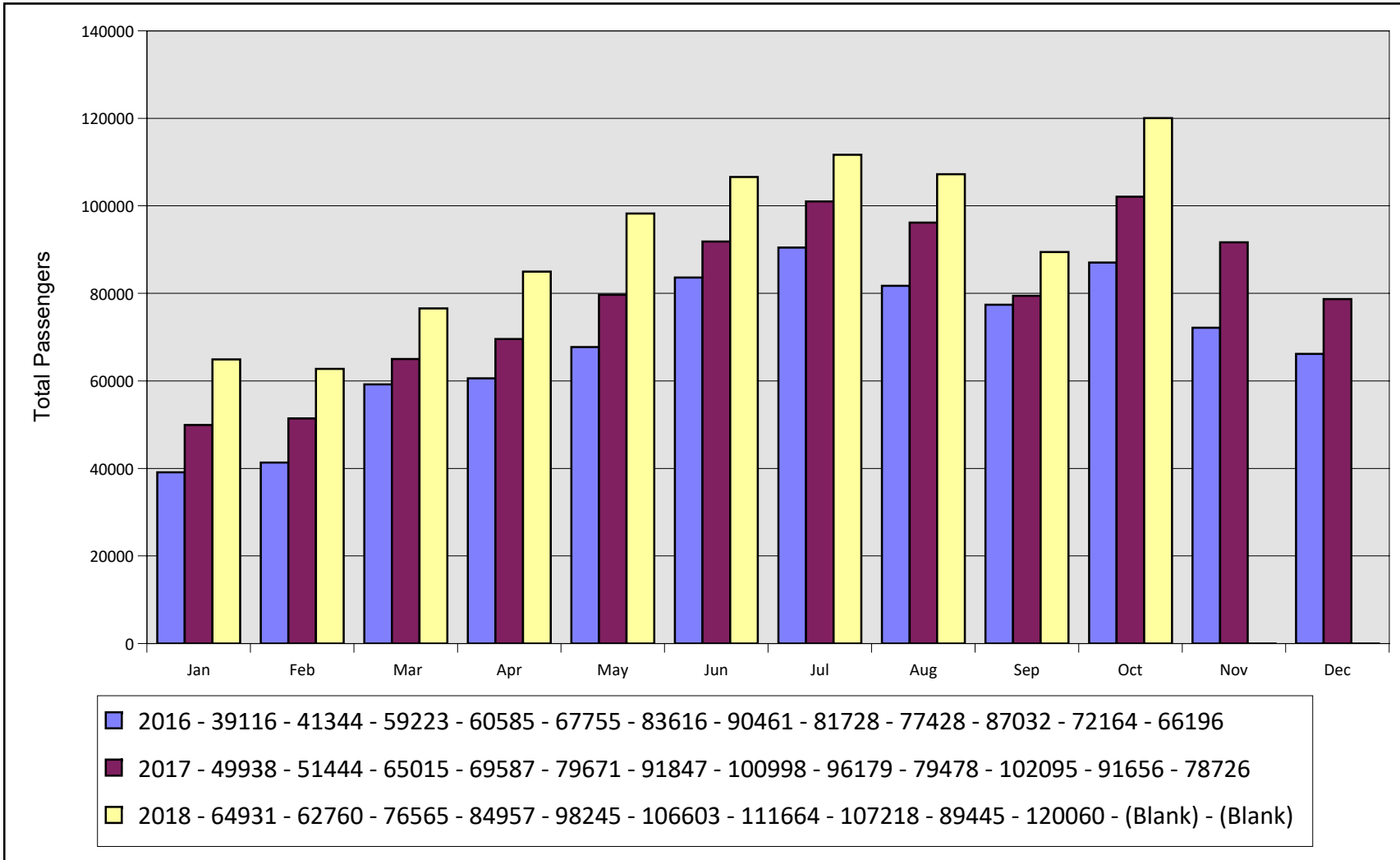
# Monthly Seats By Year Asheville Regional Airport



# Monthly Load Factors By Year Asheville Regional Airport

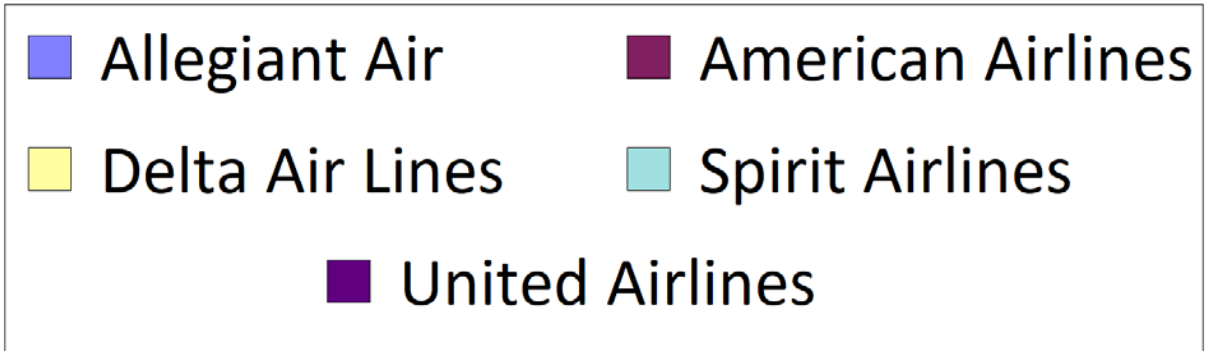
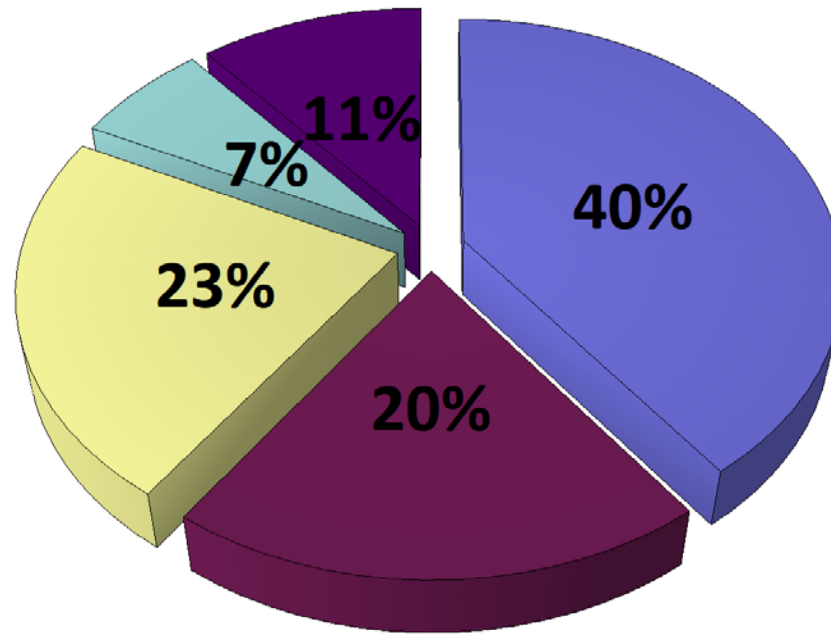


# Total Monthly Passengers By Year Asheville Regional Airport



# Airline Market Share Analysis (Enplanements) Asheville Regional Airport

Report Period From October 2018 Through October 2018



January 2019 vs. January 2018											
Mkt AI	Travel Period			Jan-19		Jan-18		Diff		Percent Diff	
	Orig	Dest	Ops/Week	Seats	Ops/Week	Seats	Ops/Week	Seats	Ops/Week	Seats	
AA	AVL	CLT	42	2,883	33	2,261	9	622	27.3%	27.5%	
AA	CLT	AVL	42	2,883	33	2,261	9	622	27.3%	27.5%	
DL	ATL	AVL	46	2,834	37	2,690	9	144	24.3%	5.4%	
DL	AVL	ATL	46	2,834	37	2,690	9	144	24.3%	5.4%	
G4	AVL	EWR	2	354	2	354	0	0	0.0%	0.0%	
G4	EWR	AVL	2	354	2	354	0	0	0.0%	0.0%	
G4	AVL	FLL	14	2,478	7	1,239	7	1,239	100.0%	100.0%	
G4	FLL	AVL	14	2,478	7	1,239	7	1,239	100.0%	100.0%	
G4	AVL	PGD	2	354	2	354	0	0	0.0%	0.0%	
G4	PGD	AVL	2	354	2	354	0	0	0.0%	0.0%	
G4	AVL	PIE	6	1,062	4	708	2	354	50.0%	50.0%	
G4	PIE	AVL	6	1,062	4	708	2	354	50.0%	50.0%	
G4	AVL	SFB	7	1,239	2	354	5	885	250.0%	250.0%	
G4	SFB	AVL	7	1,239	2	354	5	885	250.0%	250.0%	
NK	AVL	FLL	4	728	0	0	4	728			
NK	FLL	AVL	4	728	0	0	4	728			
NK	AVL	MCO	4	728	0	0	4	728			
NK	MCO	AVL	4	728	0	0	4	728			
NK	AVL	TPA	3	546	0	0	3	546			
NK	TPA	AVL	3	546	0	0	3	546			
UA	AVL	EWR	6	300	6	768	0	(468)	0.0%	(60.9%)	
UA	EWR	AVL	6	300	6	768	0	(468)	0.0%	(60.9%)	
UA	AVL	ORD	14	700	14	700	0	0	50.0%	50.0%	
UA	ORD	AVL	14	700	14	700	0	0	50.0%	50.0%	
<b>Total</b>			<b>300</b>	<b>28,412</b>	<b>214</b>	<b>18,856</b>	<b>86</b>	<b>9,556</b>	<b>40.2%</b>	<b>50.7%</b>	

February 2019 vs. February 2018											
Mkt AI	Travel Period			Feb-19		Feb-18		Diff		Percent Diff	
	Orig	Dest	Ops/Week	Seats	Ops/Week	Seats	Ops/Week	Seats	Ops/Week	Seats	
AA	AVL	CLT	42	2,883	32	2,224	10	659	31.2%	29.6%	
AA	CLT	AVL	42	2,883	31	2,161	11	722	33.5%	33.4%	
DL	ATL	AVL	46	2,834	36	2,700	10	134	27.8%	5.0%	
DL	AVL	ATL	46	2,834	36	2,700	10	134	27.8%	5.0%	
G4	AVL	EWR	2	354	2	354	0	0	0.0%	0.0%	
G4	EWR	AVL	2	354	2	354	0	0	0.0%	0.0%	
G4	AVL	FLL	14	2,478	7	1,239	7	1,239	100.0%	100.0%	
G4	FLL	AVL	14	2,478	7	1,239	7	1,239	100.0%	100.0%	
G4	AVL	PGD	3	531	3	531	0	0	0.0%	0.0%	
G4	PGD	AVL	3	531	3	531	0	0	0.0%	0.0%	
G4	AVL	PIE	5	885	4	708	1	177	25.0%	25.0%	
G4	PIE	AVL	5	885	4	708	1	177	25.0%	25.0%	
G4	AVL	SFB	7	1,218	4	708	3	510	75.0%	72.0%	
G4	SFB	AVL	7	1,218	4	708	3	510	75.0%	72.0%	
NK	AVL	FLL	3	546	0	0	3	546			
NK	FLL	AVL	3	546	0	0	3	546			
NK	AVL	MCO	3	546	0	0	3	546			
NK	MCO	AVL	3	546	0	0	3	546			
NK	AVL	TPA	2	364	0	0	2	364			
NK	TPA	AVL	2	364	0	0	2	364			
UA	AVL	EWR	6	300	6	762	0	(462)	0.0%	(60.6%)	
UA	EWR	AVL	6	300	6	762	0	(462)	0.0%	(60.6%)	
UA	AVL	ORD	14	700	14	700	0	0	50.0%	50.0%	
UA	ORD	AVL	14	700	14	700	0	0	50.0%	50.0%	
<b>Total</b>			<b>294</b>	<b>27,278</b>	<b>215</b>	<b>19,789</b>	<b>79</b>	<b>7,489</b>	<b>36.7%</b>	<b>37.8%</b>	

March 2019 vs. March 2018											
Mkt AI	Travel Period			Mar-19		Mar-18		Diff		Percent Diff	
	Orig	Dest	Ops/Week	Seats	Ops/Week	Seats	Ops/Week	Seats	Ops/Week	Seats	
AA	AVL	CLT	48	3,169	34	2,376	14	793	41.2%	33.4%	
AA	CLT	AVL	48	3,169	34	2,376	14	793	41.2%	33.4%	
DL	ATL	AVL	47	3,082	47	3,324	0	(242)	0.0%	(7.3%)	
DL	AVL	ATL	47	3,082	47	3,324	0	(242)	0.0%	(7.3%)	
G4	AVL	BWI	2	354	0	0	2	354			
G4	BWI	AVL	2	354	0	0	2	354			
G4	AVL	DEN	2	354	0	0	2	354			
G4	DEN	AVL	2	354	0	0	2	354			
G4	AVL	EWR	5	885	2	354	3	531	150.0%	150.0%	
G4	EWR	AVL	5	885	2	354	3	531	150.0%	150.0%	
G4	AVL	FLL	16	2,832	6	1,062	10	1,770	166.7%	166.7%	
G4	FLL	AVL	16	2,832	6	1,062	10	1,770	166.7%	166.7%	
G4	AVL	PGD	3	531	3	531	0	0	0.0%	0.0%	
G4	PGD	AVL	3	531	3	531	0	0	0.0%	0.0%	
G4	AVL	PIE	7	1,218	4	708	3	510	75.0%	72.0%	
G4	PIE	AVL	7	1,218	4	708	3	510	75.0%	72.0%	
G4	AVL	SFB	9	1,530	4	708	5	822	125.0%	116.1%	
G4	SFB	AVL	9	1,530	4	708	5	822	125.0%	116.1%	
G4	AVL	SRQ	2	354	0	0	2	354			
G4	SRQ	AVL	2	354	0	0	2	354			
NK	AVL	FLL	4	728	0	0	4	728			
NK	FLL	AVL	4	728	0	0	4	728			
NK	AVL	MCO	4	728	0	0	4	728			
NK	MCO	AVL	4	728	0	0	4	728			
NK	AVL	TPA	3	546	0	0	3	546			
NK	TPA	AVL	3	546	0	0	3	546			
UA	AVL	EWR	0	0	7	578	(7)	(578)	(100.0%)	(100.0%)	
UA	EWR	AVL	0	0	7	578	(7)	(578)	(100.0%)	(100.0%)	
UA	AVL	IAD	14	700	0	0	14	700			
UA	IAD	AVL	14	700	0	0	14	700			
UA	AVL	ORD	21	1,050	21	1,050	0	0	0.0%	0.0%	
UA	ORD	AVL	21	1,050	21	1,050	0	0	0.0%	0.0%	
<b>Total</b>			<b>374</b>	<b>36,122</b>	<b>256</b>	<b>21,382</b>	<b>118</b>	<b>14,740</b>	<b>46.1%</b>	<b>68.9%</b>	



---

## MEMORANDUM

TO: Members of the Airport Authority

FROM: Janet Burnette, Director of Finance & Accounting

DATE: December 14, 2018

### **ITEM DESCRIPTION – Information Section Item B**

Greater Asheville Regional Airport – Explanation of Extraordinary Variances  
Month of October 2018

### **SUMMARY**

Operating Revenues for the month of October were \$1,193,707. Operating Expenses for the month were \$714,938. As a result, Net Operating Revenues before Depreciation were \$478,769. Net Non-Operating Revenues were \$440,875.

Year-to-date Operating Revenues were \$4,668,737, 42.5% of annual budget. Year-to-date Operating Expenses were \$2,569,815, 26.3% of annual budget. Both percentages represent positive results as we have now completed 33% of the fiscal year. Year-to-date Net Operating Revenues before Depreciation were \$2,098,921. Net Non-Operating Revenues for the year were \$1,487,456, 52.6% of annual budget.

### **STATEMENT OF NET ASSETS**

Significant variations to prior month were:

Grants Receivable – Grants Receivable increased by \$796k due to the Airfield Redevelopment project.

Construction in Progress – Construction in Progress increased by \$872k mainly due to the Airfield Redevelopment project.

Property and Equipment, Net – Property and Equipment, Net decreased by \$387k due to depreciation.

Information Section – Item B

**ASHEVILLE REGIONAL AIRPORT  
INVESTMENT AND INTEREST INCOME SUMMARY  
As of October 31, 2018**

<b><u>Institution:</u></b>	<b><u>Interest Rate</u></b>	<b><u>Investment Amount</u></b>	<b><u>Monthly Interest</u></b>
Bank of America - Operating Account	0.60%	\$ 15,164,835 .	7,654
First Citizens - Money Market Account	0.35%	403,503 .	120
NC Capital Management Trust - Cash Portfolio		17,601 .	30
NC Capital Management Trust - Term Portfolio		9,169,980 .	17,054
Petty Cash		200 .	
 <b><u>Restricted Cash:</u></b>			
BNY Mellon		567,072 .	
Bank of America - PFC Revenue Account	0.60%	202,340 .	2,875
NC Capital Management Trust - Term Port - PFC		10,008,528 .	8,528
 <b>Total</b>		 <b><u>\$ 35,534,059</u></b>	 <b><u>\$ 36,261</u></b>

**Investment Diversification:**

Banks	46%
NC Capital Management Trust	54%
Commercial Paper	0%
Federal Agencies	0%
US Treasuries	0%
	<u>100%</u>



**ASHEVILLE REGIONAL AIRPORT  
STATEMENT OF CHANGES IN FINANCIAL POSITION  
For the Month Ended October 31, 2018**

	<u>Current Month</u>	<u>Prior Period</u>
<b>Cash and Investments Beginning of Period</b>	<b>\$ 34,507,984</b>	<b>\$ 33,973,132</b>
Net Income/(Loss) Before Capital Contributions	532,348	372,175
Depreciation	387,295	387,295
Decrease/(Increase) in Receivables	(764,924)	130,466
Increase/(Decrease) in Payables	754,825	55,803
Decrease/(Increase) in Prepaid Expenses	19,573	18,959
Decrease/(Increase) in Fixed Assets	(872,098)	(239,562)
Principal Payments of Bond Maturities	-	38,016
Capital Contributions	926,111	(228,300)
System Conversion (Prior Period) Adjustment	42,945	
<b>Increase(Decrease) in Cash</b>	<b><u>1,026,075</u></b>	<b><u>534,852</u></b>
<b>Cash and Investments End of Period</b>	<b><u>\$ 35,534,059</u></b>	<b><u>\$ 34,507,984</u></b>

**ASHEVILLE REGIONAL AIRPORT  
STATEMENT OF FINANCIAL POSITION  
As of October 31, 2018**

	<b>Current Month</b>	<b>Last Month</b>
<b><u>ASSETS</u></b>		
<b>Current Assets:</b>		
<b>Unrestricted Net Assets:</b>		
Cash and Cash Equivalents	\$24,756,119	\$24,126,122
Investments	0	0
Accounts Receivable	1,519,005	1,557,978
Passenger Facility Charges Receivable	400,000	400,000
Refundable Sales Tax Receivable	60,302	52,353
Grants Receivable	1,248,004	452,055
Prepaid Expenses	151,212	170,785
Total Unrestricted Assets	28,134,642	26,759,293
<b>Restricted Assets:</b>		
Cash and Cash Equivalents	10,777,940	10,381,863
Total Restricted Assets	10,777,940	10,381,863
Total Current Assets	38,912,582	37,141,156
<b>Noncurrent Assets:</b>		
Construction in Progress	77,708,377	76,836,279
Net Pension Asset - LGERS	(760,162)	(760,162)
Benefit Payment - OPEB	25,682	25,682
Contributions in Current Year	617,323	617,323
Property and Equipment - Net	52,159,649	52,546,944
Total Noncurrent Assets	129,750,869	129,266,066
	\$168,663,451	\$166,407,222
<b><u>LIABILITIES AND NET ASSETS</u></b>		
<b>Current Liabilities:</b>		
<b>Payable from Unrestricted Assets:</b>		
Accounts Payable & Accrued Liabilities	\$1,022,861	\$464,402
Customer Deposits	10,510	10,510
Unearned Revenue	626,755	468,406
Construction Contracts Payable	0	0
Construction Contract Retainages	1,933,007	1,933,007
Revenue Bond Payable - Current	1,245,000	1,245,000
Interest Payable	152,066	114,049
Total Payable from Unrestricted Assets	4,990,199	4,235,374
Total Current Liabilities	4,990,199	4,235,374
<b>Noncurrent Liabilities:</b>		
Pension Deferrals - OPED	56,737	56,737
Other Postemployment Benefits	1,248,463	1,248,463
Compensated Absences	359,211	359,211
Net Pension Obligation-LEO Special Separation Allowance	474,558	474,558
Revenue Bond Payable - Noncurrent	17,585,000	17,585,000
Total Noncurrent Liabilities	19,723,969	19,723,969
Total Liabilities	24,714,168	23,959,343
<b>Net Assets:</b>		
Invested in Capital Assets	111,038,026	110,553,223
Restricted	10,777,940	10,381,863
Unrestricted	22,133,317	21,512,793
Total Net Assets	143,949,283	142,447,879
	\$168,663,451	\$166,407,222



# Income Statement

Through 10/31/18  
Summary Listing

Classification	Annual Budget Amount	MTD Actual Amount	YTD Actual Amount	YTD Encumbrances	Budget Less YTD Actual	% of Budget	Prior Year Total Actual
Fund Category <b>Governmental Funds</b>							
Fund Type <b>General Fund</b>							
Fund <b>10 - General Fund</b>							
<i>Operating revenues</i>							
Terminal space rentals - non airline	247,909.00	20,640.11	81,773.18	.00	166,135.82	33	.00
Terminal space rentals - airline	2,067,331.00	195,329.62	774,950.92	.00	1,292,380.08	37	.00
Landing fees	904,038.00	100,558.80	369,219.67	.00	534,818.33	41	.00
Concessions	490,780.00	51,065.05	201,914.98	.00	288,865.02	41	.00
Auto parking	3,600,000.00	550,451.85	1,803,459.25	.00	1,796,540.75	50	.00
Rental car - car rentals	1,530,000.00	141,510.27	740,106.04	.00	789,893.96	48	.00
Rental car - facility rent	647,012.00	58,667.57	224,289.13	.00	422,722.87	35	.00
Commerce ground transportation	94,500.00	21,262.65	80,101.15	.00	14,398.85	85	.00
FBO's	1,038,185.00	88,423.60	356,783.36	.00	681,401.64	34	.00
Building leases	73,197.00	2,772.45	19,714.03	.00	53,482.97	27	.00
Land leases	59,961.00	4,322.77	18,884.94	.00	41,076.06	31	.00
Other leases and fees	221,800.00	(41,297.83)	(2,459.79)	.00	224,259.79	(1)	.00
<i>Operating revenues Totals</i>	<b>\$10,974,713.00</b>	<b>\$1,193,706.91</b>	<b>\$4,668,736.86</b>	<b>\$0.00</b>	<b>\$6,305,976.14</b>	<b>43%</b>	<b>\$0.00</b>
<i>Non-operating revenue and expense</i>							
Customer facility charges	1,400,000.00	192,427.75	662,643.50	.00	737,356.50	47	.00
Passenger facility charges	1,850,000.00	242,908.12	856,483.98	.00	993,516.02	46	.00
Interest revenue	35,000.00	43,555.51	120,394.03	.00	(85,394.03)	344	.00
Interest expense	(456,197.00)	(38,016.42)	(152,065.68)	.00	(304,131.32)	33	.00
<i>Non-operating revenue and expense Totals</i>	<b>\$2,828,803.00</b>	<b>\$440,874.96</b>	<b>\$1,487,455.83</b>	<b>\$0.00</b>	<b>\$1,341,347.17</b>	<b>53%</b>	<b>\$0.00</b>
Capital contributions	.00	926,111.08	2,859,117.29	.00	(2,859,117.29)	+++	.00
<i>Operating expenses</i>							
Personnel services	5,752,370.00	391,244.70	1,538,267.54	.00	4,214,102.46	27	.00
Professional services	387,450.00	21,912.47	54,211.88	143,109.61	190,128.51	51	.00
Other contractual services	826,723.00	54,881.76	275,905.06	32,211.21	518,606.73	37	.00
Travel and training	201,075.00	19,948.87	64,218.87	.00	136,856.13	32	.00
Communications	62,850.00	5,207.10	22,387.50	.00	40,462.50	36	.00
Utility services	525,467.00	42,546.02	150,299.69	.00	375,167.31	29	.00
Rentals and leases	13,600.00	2,419.40	4,831.57	.00	8,768.43	36	.00
Insurance	234,000.00	18,882.76	90,892.04	.00	143,107.96	39	.00

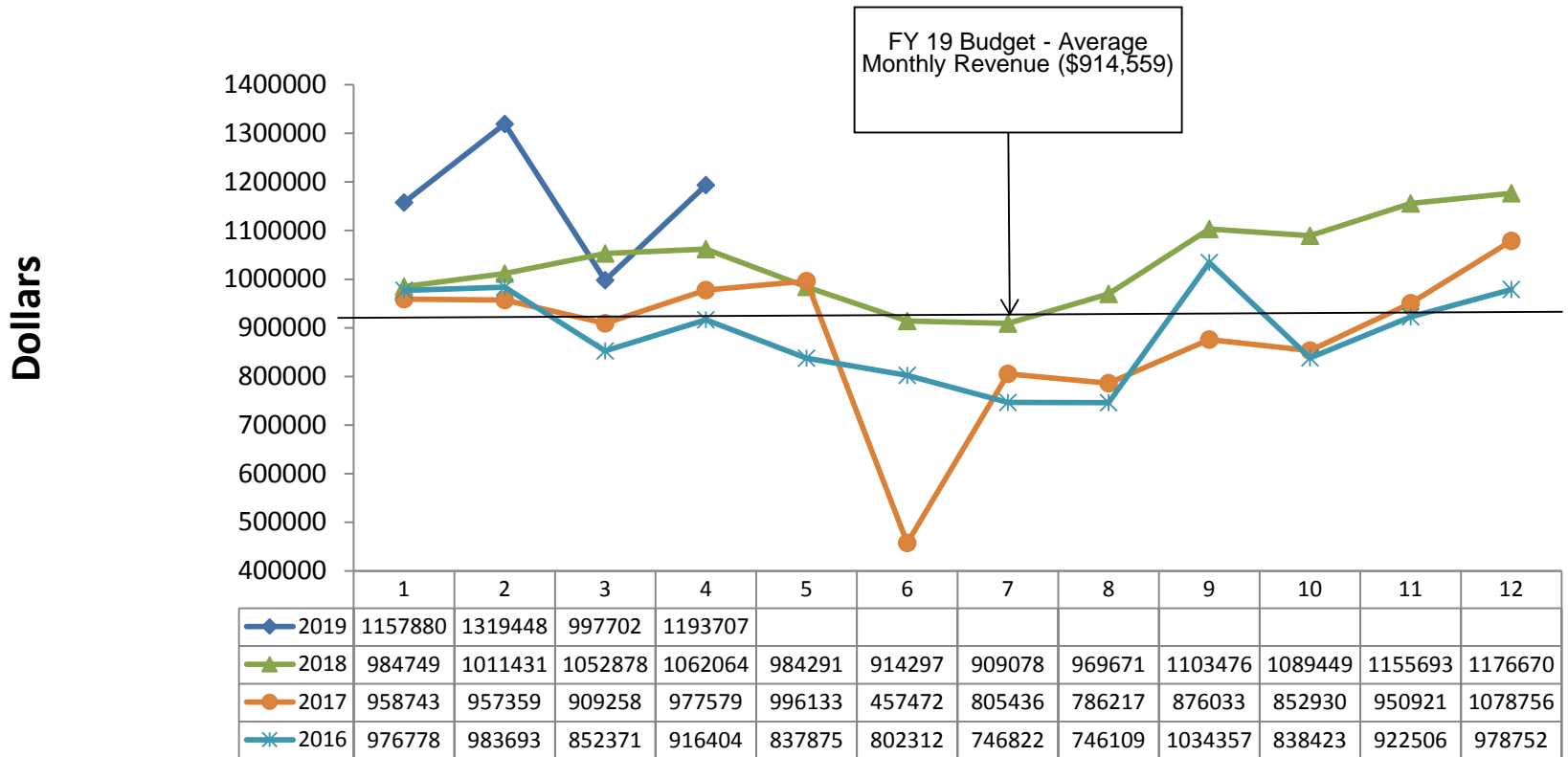


# Income Statement

Through 10/31/18  
Summary Listing

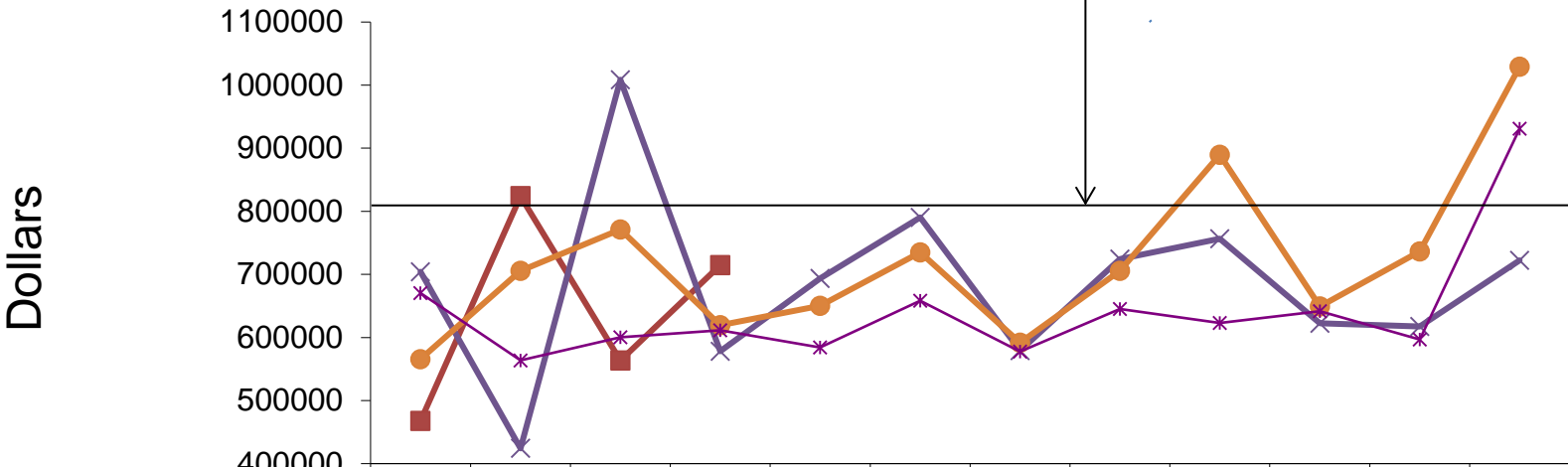
Classification	Annual Budget Amount	MTD Actual Amount	YTD Actual Amount	YTD Encumbrances	Budget Less YTD Actual	% of Budget	Prior Year Total Actual
Advertising, printing and binding	8,050.00	181.36	3,396.32	.00	4,653.68	42	.00
Promotional activities	317,390.00	29,532.71	81,049.00	46,660.25	189,680.75	40	.00
Other current charges and obligations	54,000.00	5,459.93	25,388.74	.00	28,611.26	47	.00
Operating supplies	467,425.00	44,306.44	104,620.62	6,512.79	356,291.59	24	.00
Publications, subscriptions, memberships, etc.	54,330.00	19,606.72	22,842.34	2,000.00	29,487.66	46	.00
Repairs and maintenance	181,700.00	35,775.31	76,197.92	5,876.00	99,626.08	45	.00
Small equipment	80,500.00	12,685.33	37,574.79	.00	42,925.21	47	.00
Contingency	100,000.00	.00	.00	.00	100,000.00	0	.00
Emergency repairs	50,000.00	.00	7,383.92	1,703.31	40,912.77	18	.00
Business development	450,000.00	10,347.50	10,347.50	303,819.00	135,833.50	70	.00
<i>Operating expenses Totals</i>	<i>\$9,766,930.00</i>	<i>\$714,938.38</i>	<i>\$2,569,815.30</i>	<i>\$541,892.17</i>	<i>\$6,655,222.53</i>	<i>32%</i>	<i>\$0.00</i>
<i>Depreciation</i>							
Depreciation	.00	387,295.00	1,549,180.00	.00	(1,549,180.00)	+++	.00
<i>Depreciation Totals</i>	<i>\$0.00</i>	<i>\$387,295.00</i>	<i>\$1,549,180.00</i>	<i>\$0.00</i>	<i>(\$1,549,180.00)</i>	<i>+++</i>	<i>\$0.00</i>
Fund 10 - General Fund Totals							
REVENUE TOTALS	13,803,516.00	2,560,692.95	9,015,309.98	.00	4,788,206.02	65%	.00
EXPENSE TOTALS	9,766,930.00	1,102,233.38	4,118,995.30	541,892.17	5,106,042.53	48%	.00
Fund 10 - General Fund Net Gain (Loss)	\$4,036,586.00	\$1,458,459.57	\$4,896,314.68	(\$541,892.17)	\$317,836.51	108%	\$0.00
Grand Totals							
REVENUE TOTALS	13,803,516.00	2,560,692.95	9,015,309.98	.00	4,788,206.02	65%	.00
EXPENSE TOTALS	9,766,930.00	1,102,233.38	4,118,995.30	541,892.17	5,106,042.53	48%	.00
Grand Total Net Gain (Loss)	\$4,036,586.00	\$1,458,459.57	\$4,896,314.68	(\$541,892.17)	\$317,836.51	108%	\$0.00

## ASHEVILLE REGIONAL AIRPORT Annual Operating Revenue by Month October 2018



# ASHEVILLE REGIONAL AIRPORT Annual Operating Expenses by Month October 2018

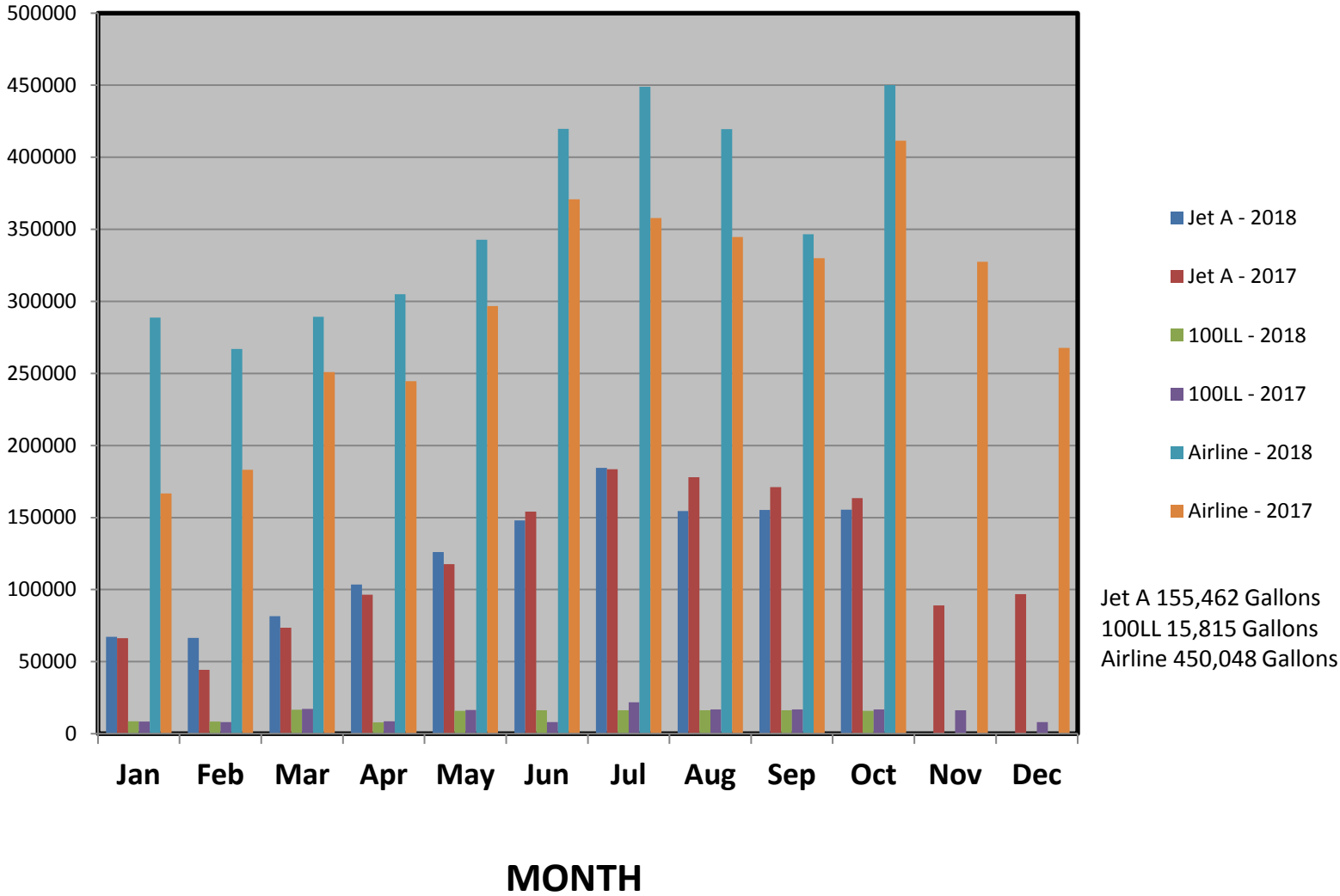
FY 19 Budget - Average  
Monthly Expenses (\$801,411)



	1	2	3	4	5	6	7	8	9	10	11	12
2019	467701	823824	563350	714938								
2018	704085	424161	1008520	578153	693612	790093	579052	724027	756743	622562	617623	722128
2017	565737	705715	771249	619423	649959	734910	591499	705568	889485	649186	736270	1029219
2016	670287	563714	600262	611567	584219	658023	577720	645039	622755	641782	596505	930918

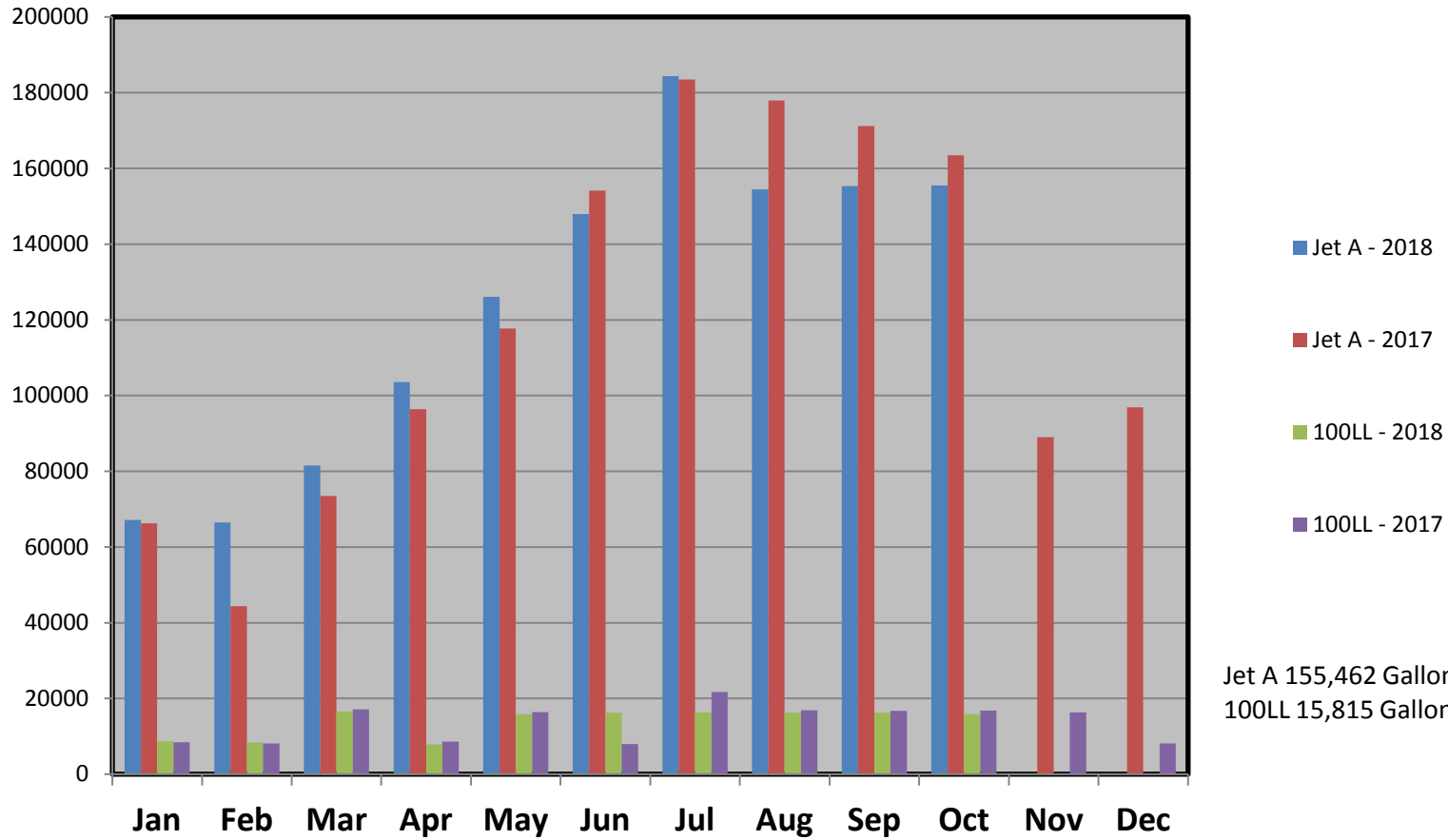
**ASHEVILLE REGIONAL AIRPORT  
FUEL SALES - GALLONS  
October 2018**

**G  
A  
L  
L  
O  
N  
S**



**ASHEVILLE REGIONAL AIRPORT  
GENERAL AVIATION FUEL SALES - GALLONS  
October 2018**

**G  
A  
L  
L  
O  
N  
S**



Jet A 155,462 Gallons  
100LL 15,815 Gallons

**MONTH**



**Design Phase**

Project Number	Project Name	Project Description	Professional Services Consultant	Professional Services Contract	General Contractor	Original Construction Contract	Change Orders (thru 12/01/2018)	Percent of Original Contract	Board Approved Project Cost	Percent Complete	Expensed to Date (thru 12/01/2018)	Start Date	End Date	Current Project Status (as of 12/01/2018)
1	Airfield Re-Development Project	Budget for the complete project				\$64,100,000.00	\$15,900,000.00		\$80,000,000.00	69.4%	\$55,520,895			All Engineer contracts, completed construction contracts and expenses will be inclusive of budget.
1A	Airfield Re-Development Project	Phase I - Design Services	RS&H	\$447,983.00	N/A	N/A	\$0.00	0.00%	(Overall total included in above number)	83%	\$372,161	Dec-12	Jun-16	Project Management work primarily complete.
1B	Airfield Re-Development Project	Phase II - Design Services and Project Management.	RS&H	\$1,842,318.00	N/A	N/A	\$0.00	0.00%	(Overall total included in above number)	95%	\$1,748,887	Jun-13	Dec-16	Project Management work continues, pending Contractor resolution.
1C	Airfield Re-Development Project	Phase III and IV - Design Services and Project Management.	RS&H	\$2,399,826.00	N/A	N/A	\$1,469,611.00	65.90%	(Overall total included in above number)	81%	\$3,134,056	Dec-14	Jun-19	Phase IV Project Management continues.
1D	Airfield Re-Development Project	New Runway Design	AVCON	\$1,967,476.00	N/A	N/A	\$86,653.00	4.40%	(Overall total included in above number)	95.3%	\$1,959,197	Mar-13	Jun-19	Phase IV Project Management continues.
1E	Airfield Re-Development Project	Miscellaneous and Administrative Expenses			N/A	N/A	\$0.00	0.00%	(Overall total included in above number)		\$5,264,058	Jan-13	Dec-17	Miscellaneous Administrative Expenses, Reimbursable Agreement and Land Acquisition
2	Expand Air Carrier Apron	Design additional apron space to hold RON Aircraft. Professional CA and Inspections.	Delta Airport Consultants	\$99,000.00	N/A	N/A	\$150,750.00	66%	\$249,750.00	87%	\$217,738	Feb-17	Jun-18	Close out documentation being assembled.
3	Terminal Building Assessment Study	Terminal infrastructure, interior space and exterior facade assessment.	CHA	\$550,247.00	N/A	N/A	\$0.00	0.00%	\$628,900.00	98.1%	\$539,940	Jan-18	Jun-18	Review of next steps.
4	Airport Security and Identity Management	Security system, ID badging and CCTV camera equipment	Faith Group LLC	\$327,486.27	N/A	N/A	\$0.00	0.00%	\$327,486.27	14.6%	\$48,088.00	Aug-18	Mar-19	Review of findings scheduled.
5	Apron Expansion South	Terminal apron to be expanded and added for aircraft use.	Parrish and Partners	\$821,196.00	N/A	N/A	\$0.00	0%	\$0.00	2%	\$0.00	Nov-18	Mar-19	NTP issued and design is underway with survey and core samples taken.

**Construction Phase**

Project Number	Project Name	Project Description	Professional Services Consultant	Professional Services Contract	General Contractor	Original Construction Contract	Change Orders (thru 12/01/02018)	Percent of Original Contract	Board Approved Project Cost	Percent Complete	Expensed to Date (thru 12/01/2018)	Start Date	End Date	Current Project Status (as of 12/01/2018)
1	Permanent Runway 17-35 Construction, NAVAIDS and Taxiway Conversion	Construct new runway and convert temporary runway to a taxiway	RS&H and AVCON Inc.	Amount Included in Phase 3 Design Fees	Travelers / Cedar Peaks	\$33,703,095.70	\$0.00	0.00%	\$34,703,095.70	30.1%	\$10,156,454	Mar-17	Jun-19	Winter work includes erosion control maintenance, electrical and shoulder work.
2	Expand Air Carrier Apron	Construct additional apron pavement for RON Aircraft	Delta Airport Consultants	\$0.00	NHM Constructors	\$1,043,023.50	\$1,448.87	0.14%	\$1,147,380.85	54.7%	\$571,210	Mar-18	Nov-18	Close out documentation being assembled.

(Construction and Administrative Costs included)

# ***Airportsurvey.com***



**AVL**

Airport Facilities Review For 3rd Quarter 2018

# Welcome

- Welcome to the Airportsurvey.com Airport Facilities Review for the recent quarter, a complimentary data set provided to Airportsurvey.com participating airports
- The following slides provide non-weighted scores and ratings based on an independent survey of air travelers
- Note that passenger responses are based on perception, rather than objective assessment
- Value Added Services available from Canmark include:
  - Report analysis
  - Statistical testing
  - Air carrier responses
  - Non-facility responses
  - Tailored comparison sets
  - Passenger demographics
  - Sample size enhancement
  - Targeted and customized reporting
  - Custom survey questions and content

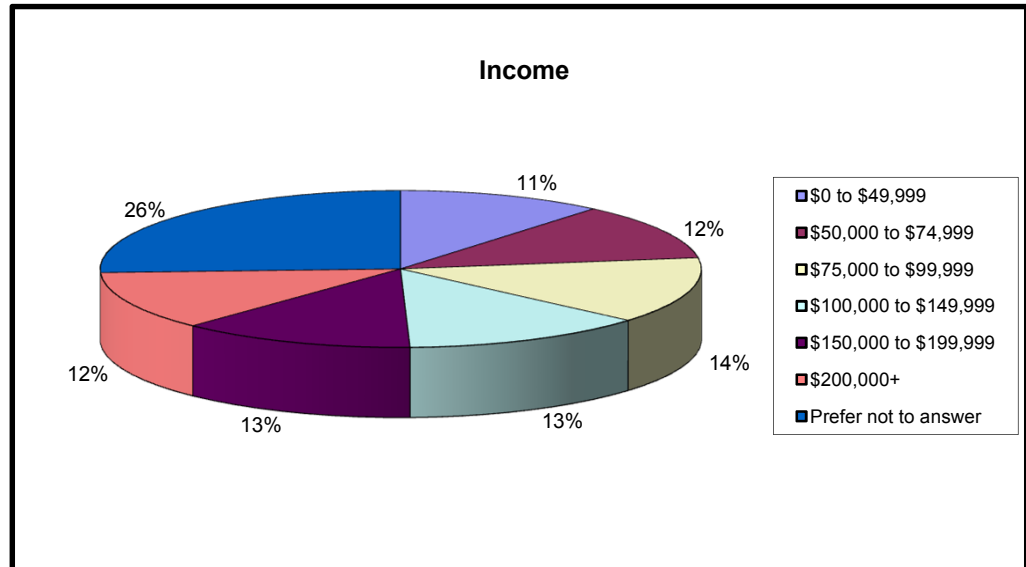
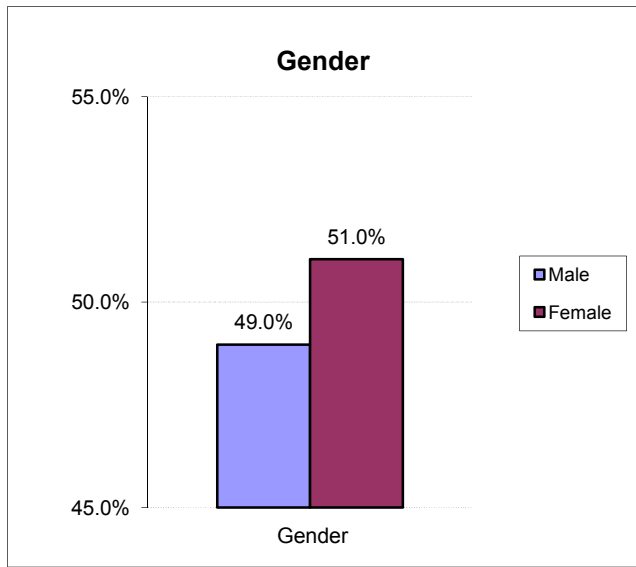
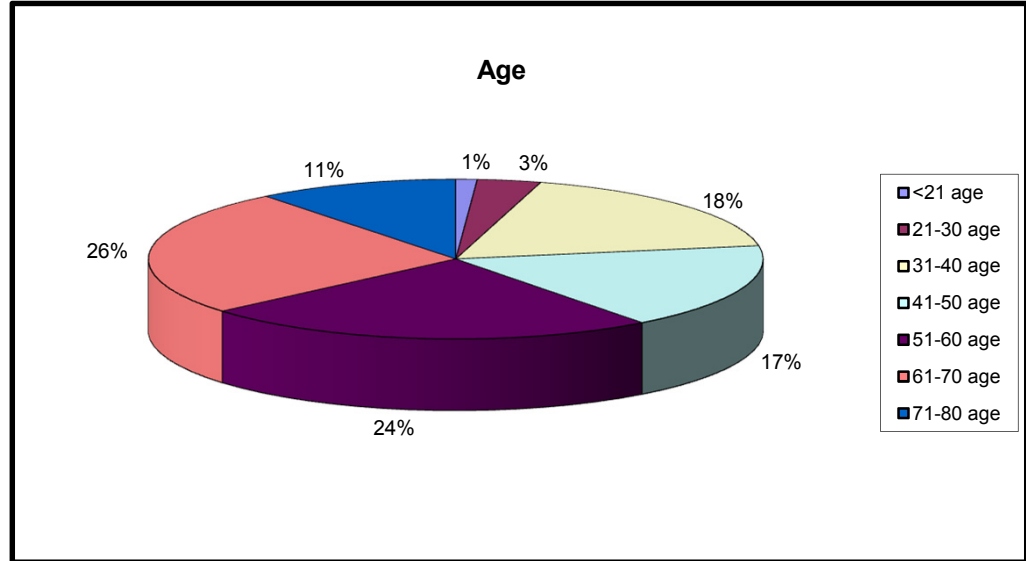
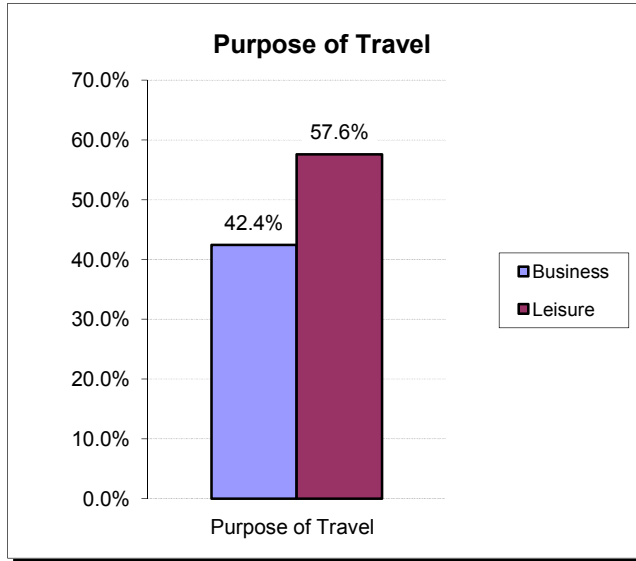
No representations are made as to the completeness or accuracy of information contained herein. Airport facility raw data is available upon request.

**Proprietary and Confidential**

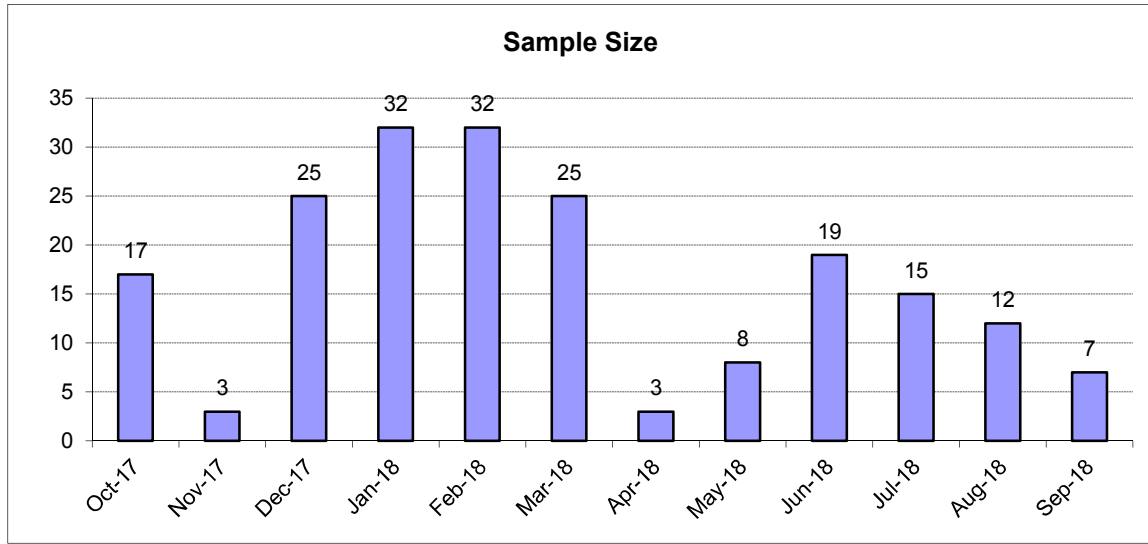
## Overview

- ***Airportsurvey.com*** is an ongoing, all-inclusive online passenger satisfaction survey program from Canmark Research Center
- Invitations to take the survey are distributed at select airports across the country
- Over 30 airports participate
- Each survey invitation card is single-use, and must reference an actual flight
- Survey distribution occurs approximately three days per month
- Response scale is 1 through 5: Poor, Fair, Good, Very Good, Excellent
- Survey participants have a chance to win round-trip airline tickets
- Response rates vary from 10% to 20% based on location
- Facilities attributes are scored according to check-in airport
- Airports are grouped into three tiers according to available seats in calendar year 2017

# Passenger Demographics



# General Findings



**Sample is clustered around airport invitation distribution dates.**

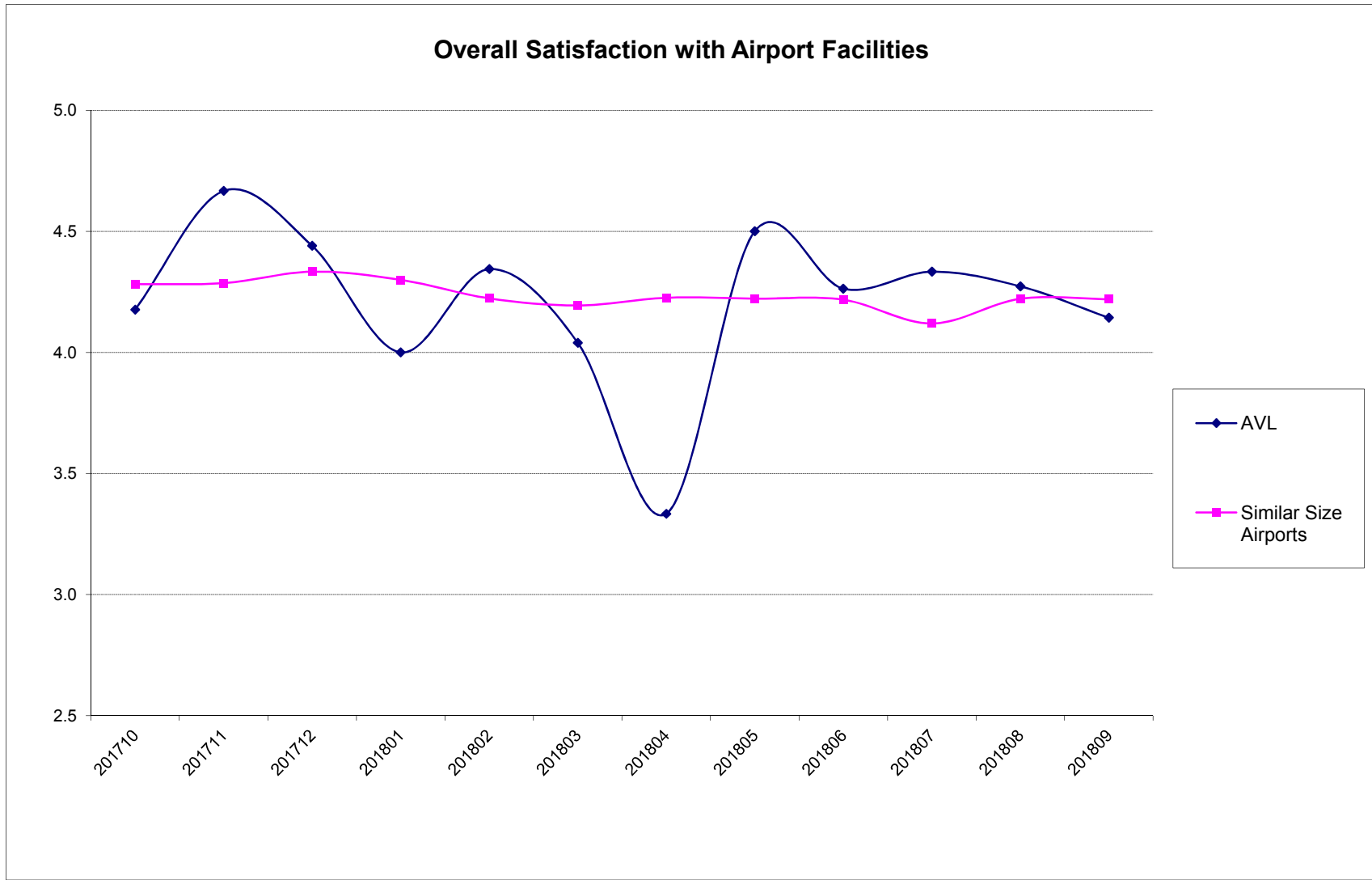
**Sample reflects passengers intercepted at arrival airports who rated check-in airport.**

	AVL	Similar	+/-	Pct
Overall	4.21	4.24	(0.03)	-0.7%
Availability of parking	4.00	4.12	(0.12)	-2.9%
Cost of parking	3.41	3.64	(0.24)	-7.0%
Clear, easy to follow signs	4.29	4.28	0.02	0.4%
Cleanliness	4.47	4.31	0.16	3.6%
Availability of restrooms	4.49	4.34	0.15	3.3%
Cleanliness of restrooms	4.44	4.27	0.17	3.8%
Concessions / restaurants	3.53	3.76	(0.23)	-6.4%
Transportation to your gate / concourse / terminal	4.25	4.16	0.10	2.3%
Airport Wi-Fi ease of use	4.19	4.02	0.17	4.1%
Overall airport Wi-Fi	4.14	3.94	0.19	4.6%
Overall departure airport concourse	4.24	4.20	0.04	1.0%
Security: Wait time at checkpoint	4.20	4.24	(0.04)	-0.9%
Security: Professionalism of personnel	4.27	4.35	(0.08)	-1.8%
Security: Confidence in airport security procedures	4.22	4.21	0.01	0.2%

**Statistical means testing not performed on results**

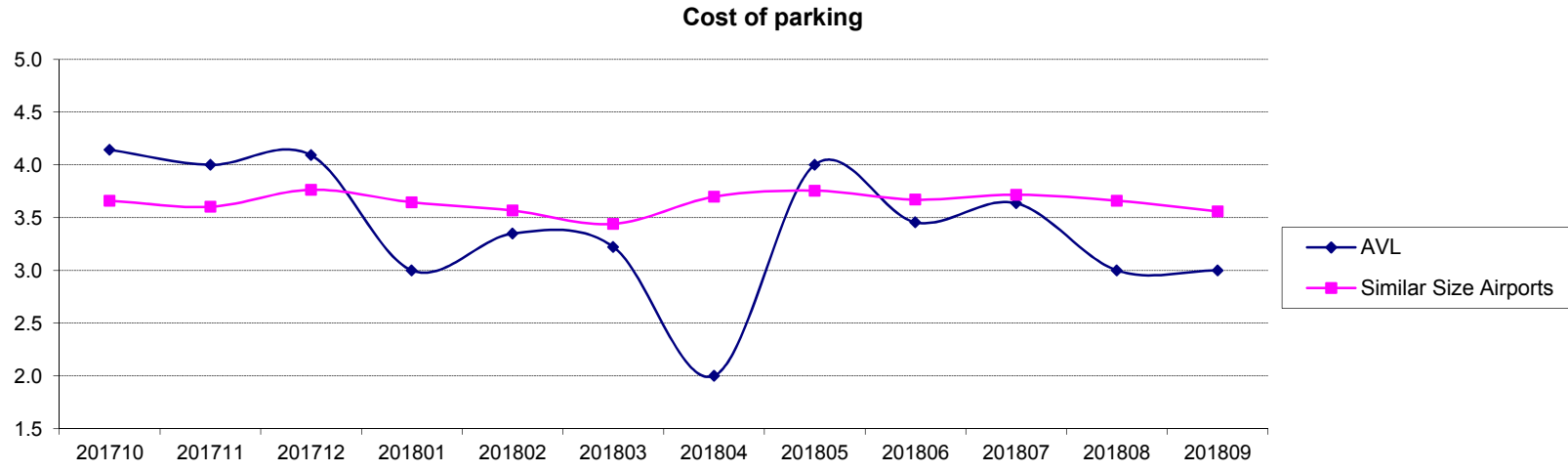
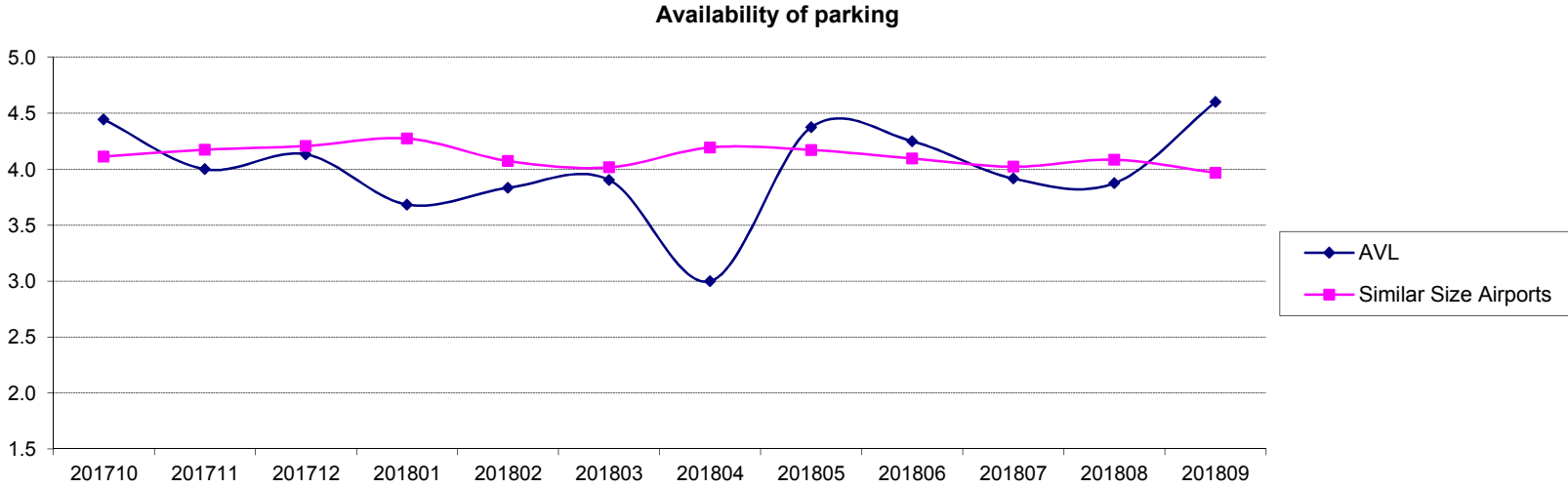
<b>AVL</b>	
<b>Responses</b>	<b>198</b>

# Overall Satisfaction with Airport Facilities



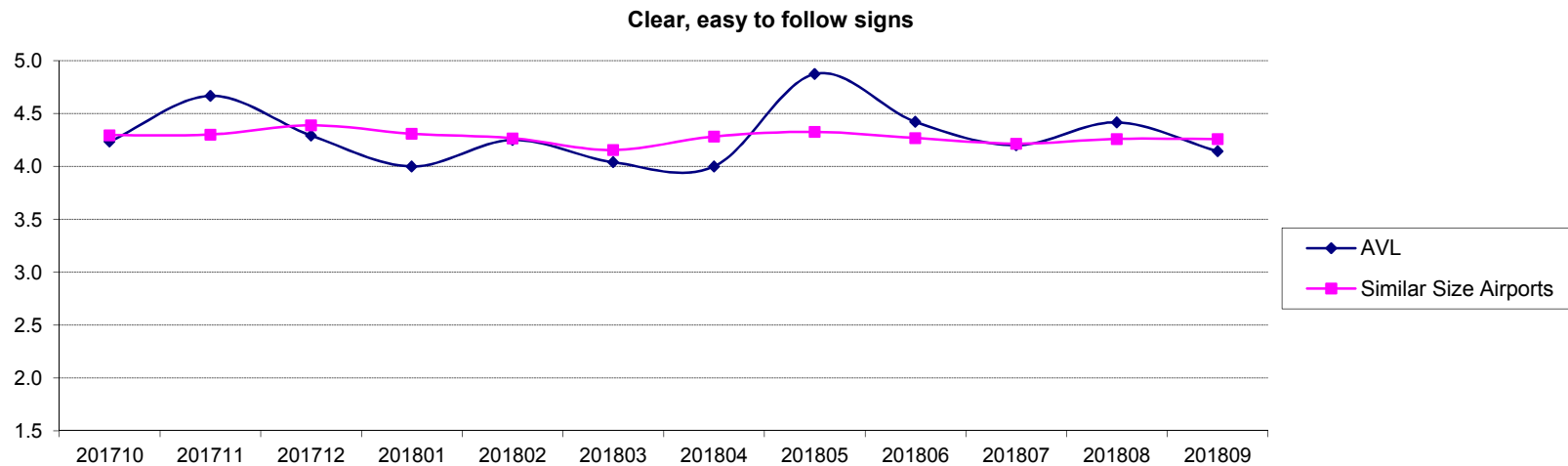
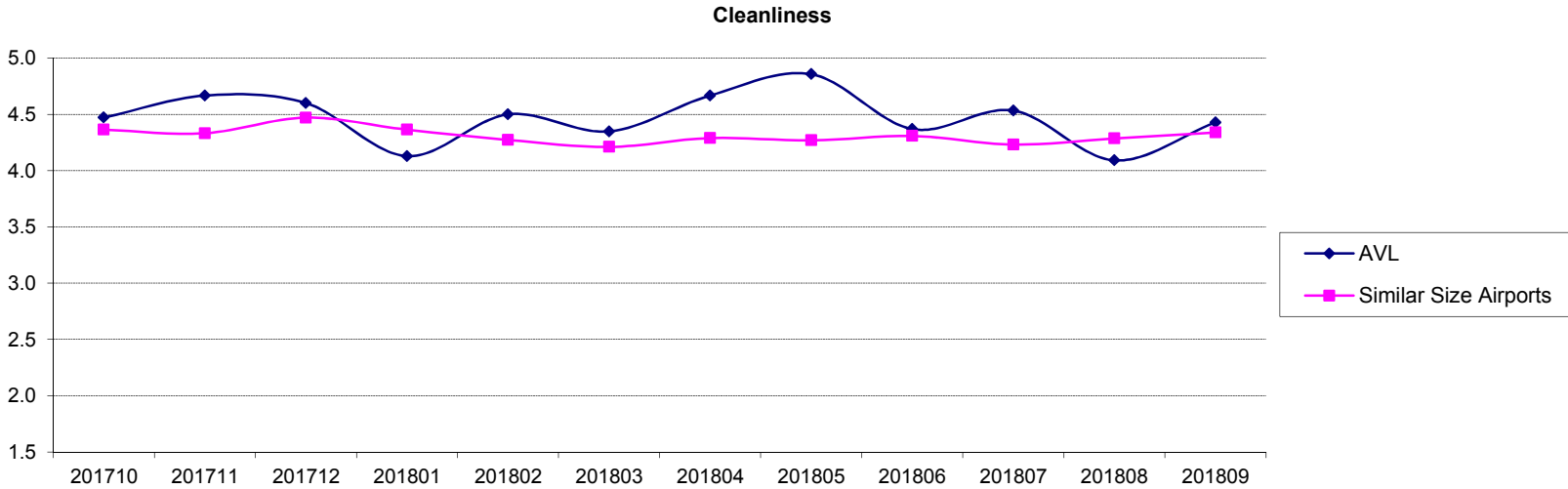
Proprietary and Confidential

# Parking Satisfaction

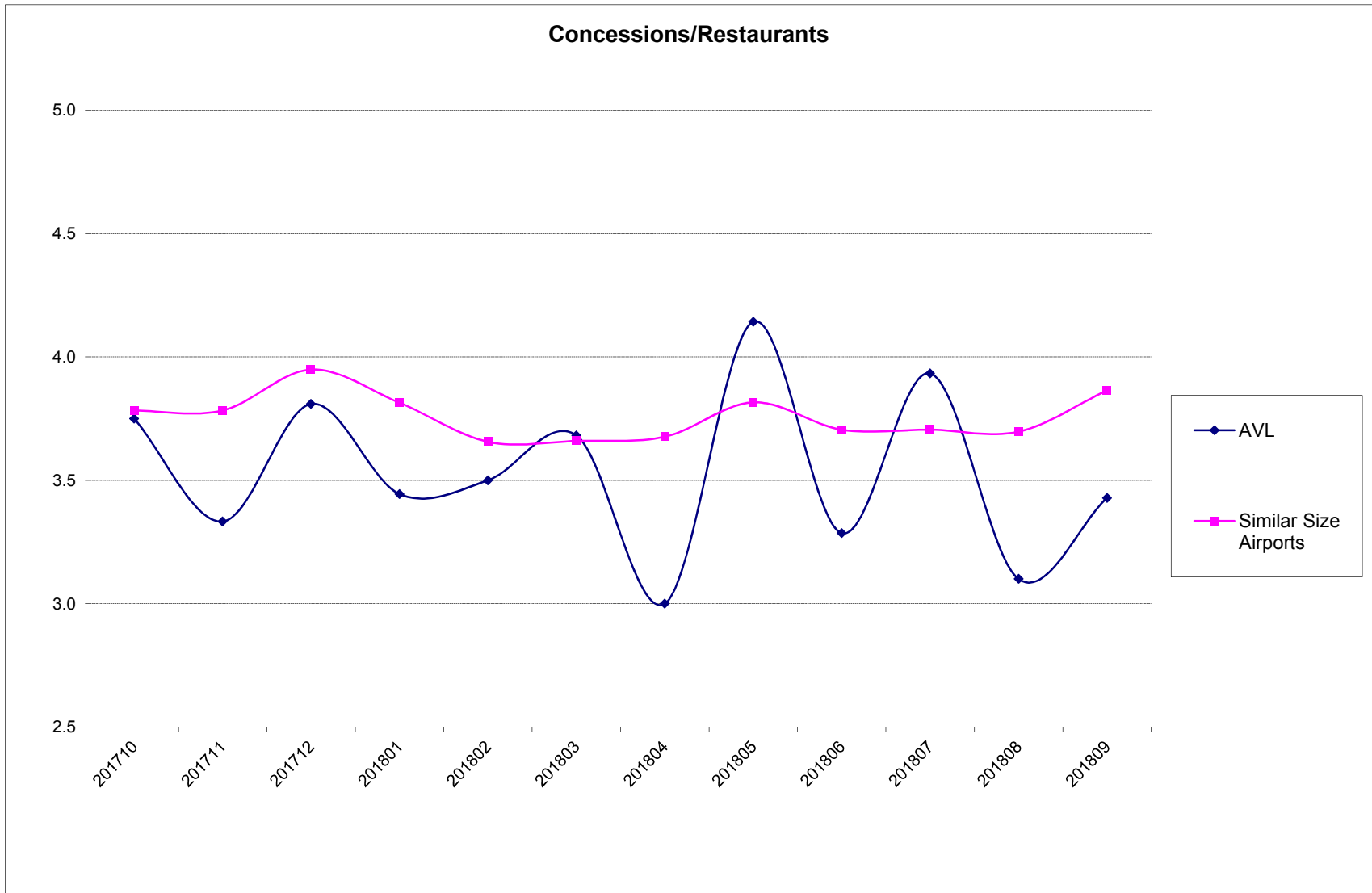




# Cleanliness and Signage



# Concessions

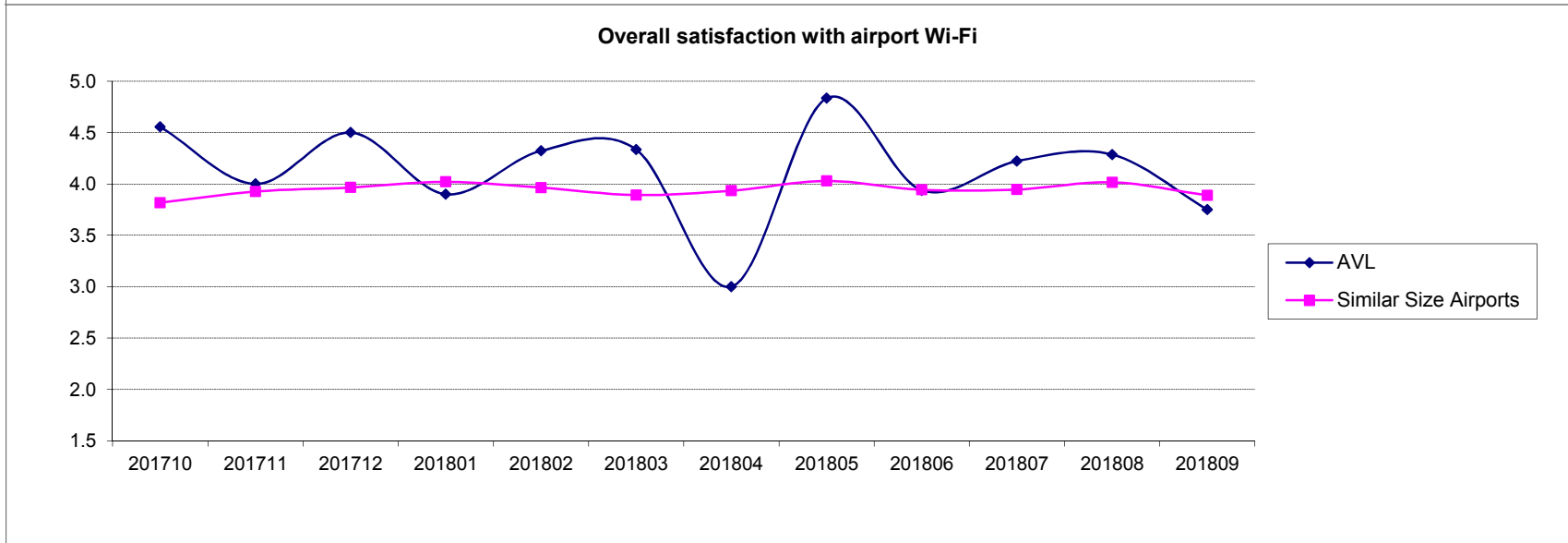
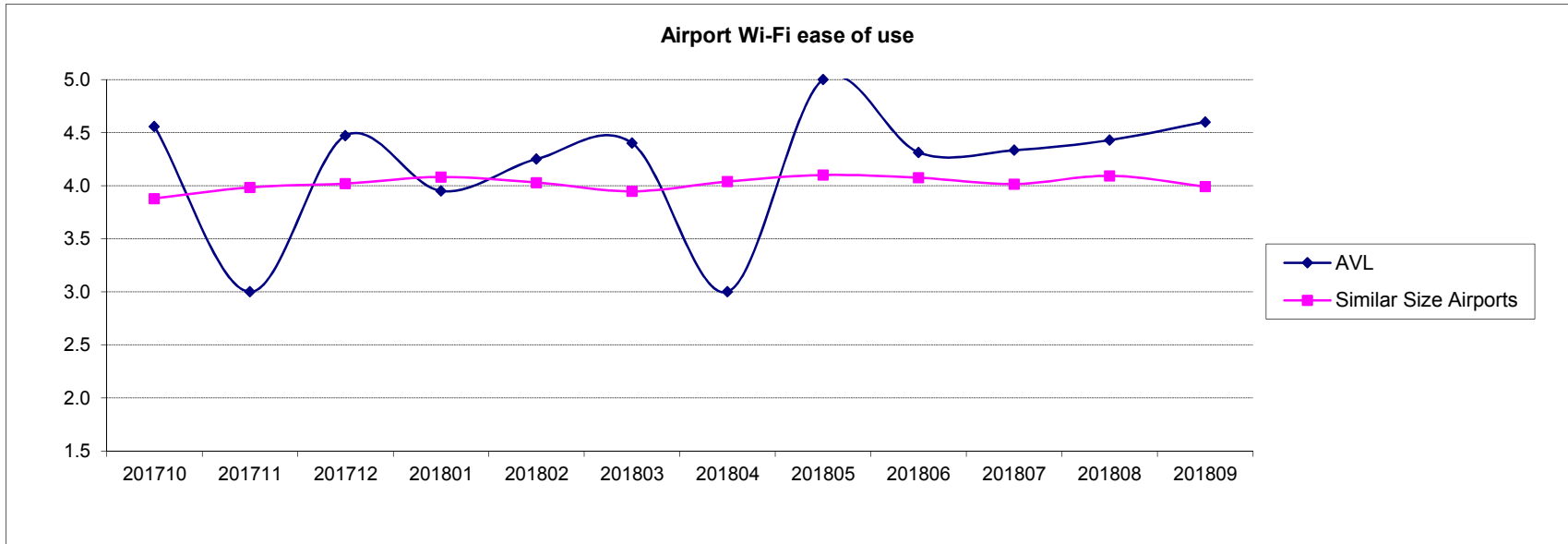


Proprietary and Confidential

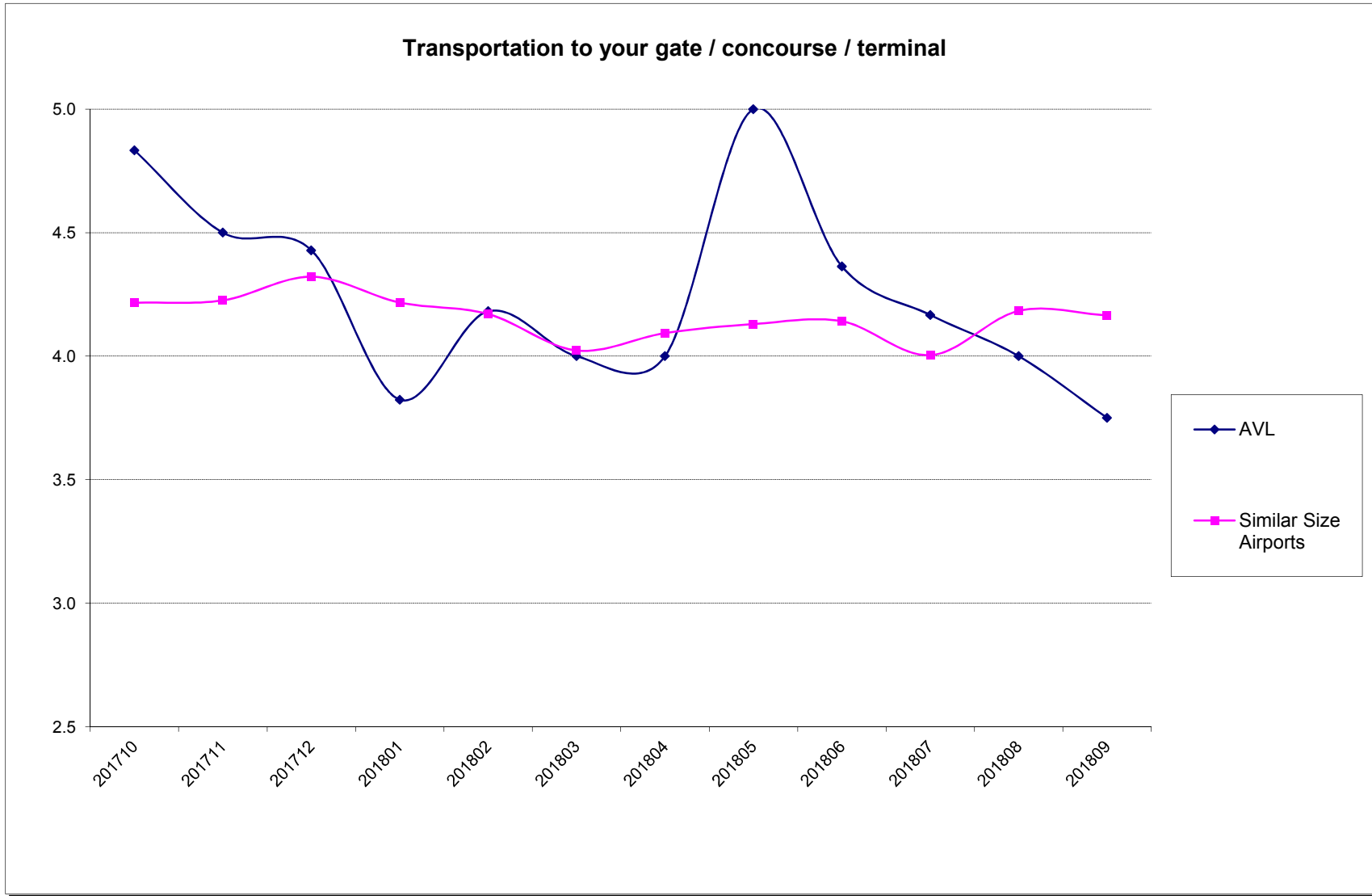
# Restrooms



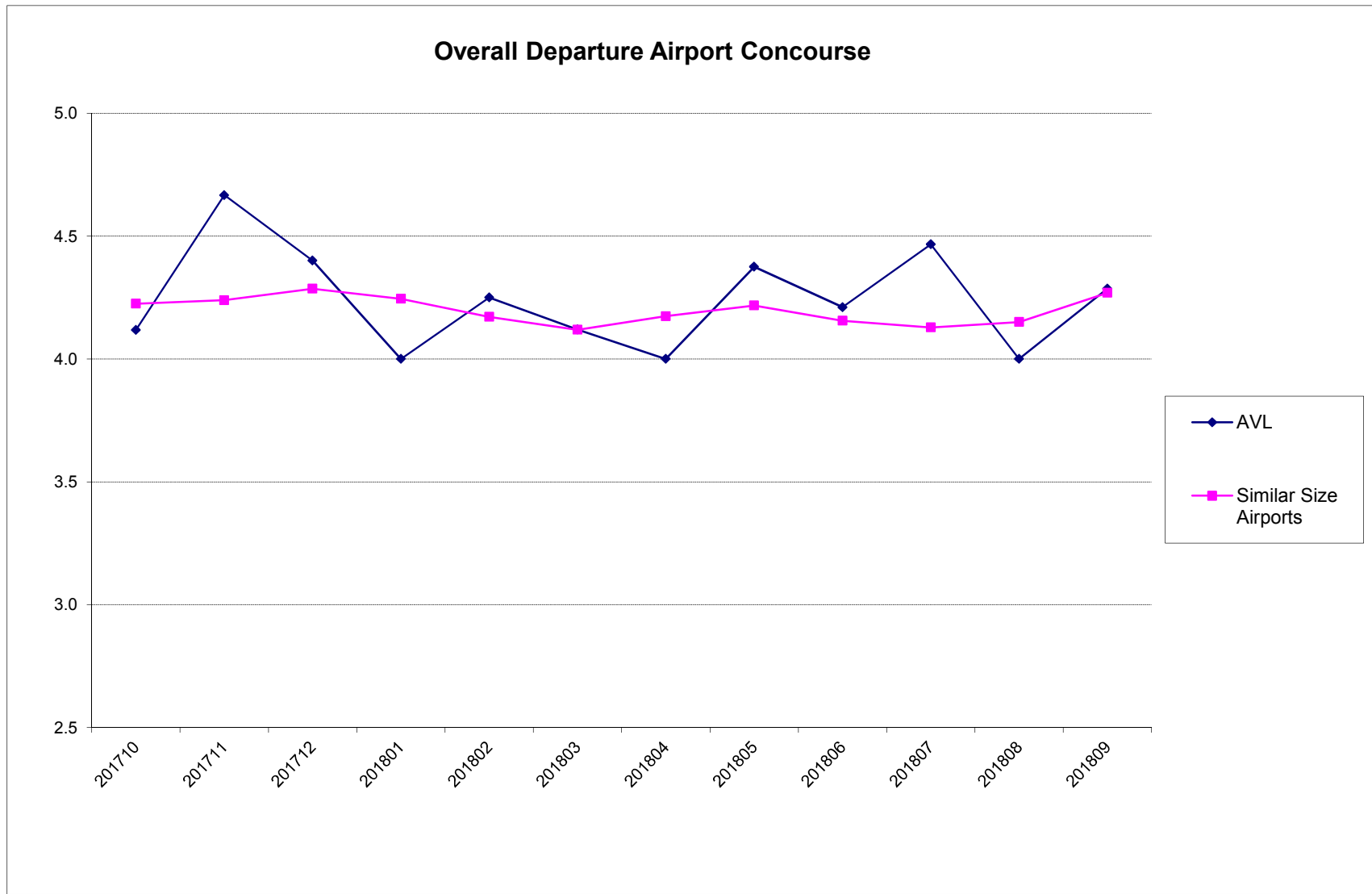
# Wi-Fi



# Transportation to Departure Gate

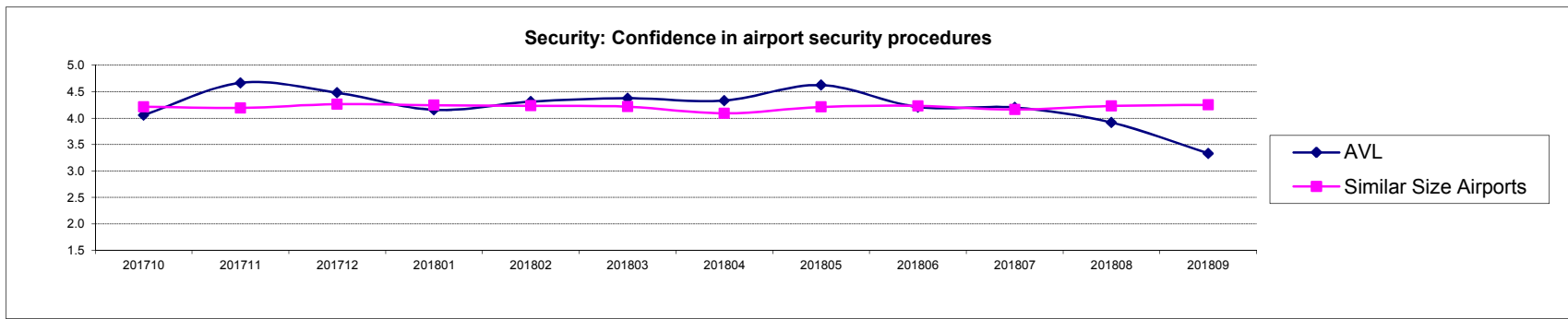
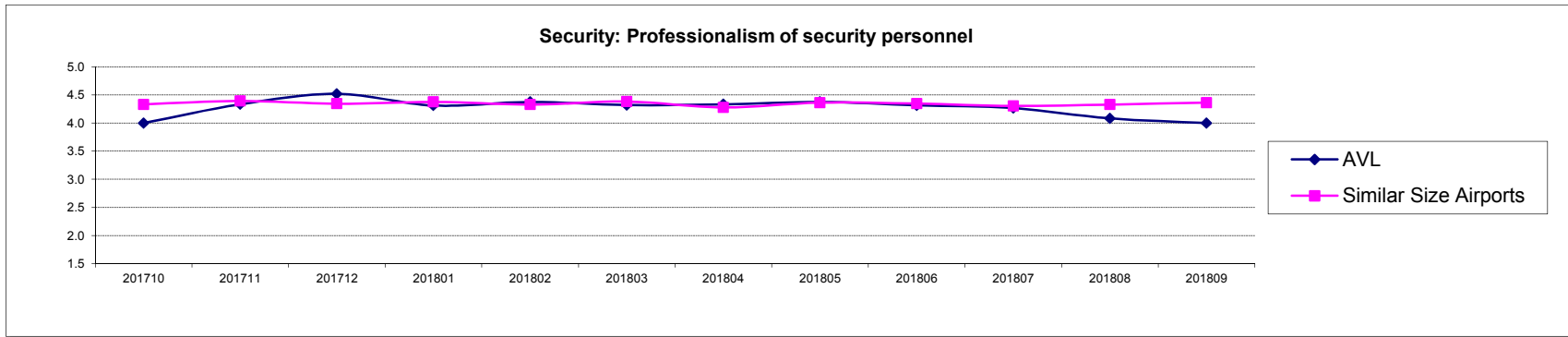
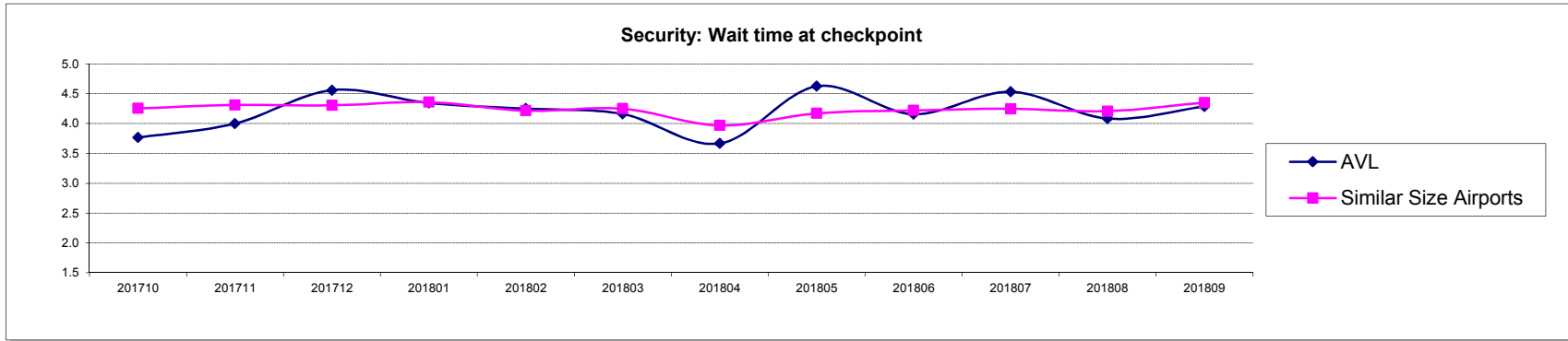


# Overall Departure Airport Concourse



Proprietary and Confidential

# Airport Security



## Appendix A - Geographic Breakdown of Respondents

AK	1	SD	1
AL	1	TN	2
AZ	1	TX	3
CA	3	VA	3
CO	4	WA	3
CT	1	WI	1
DC	2		
FL	12		
GA	2		
IA	2		
IN	2		
LA	2		
MA	3		
MD	2		
MI	4		
MN	1		
MO	1		
MS	1		
NC	120		
NE	1		
NH	1		
NY	4		
OH	1		
OK	1		
OR	3		
SC	1		

Note: Only includes passengers who indicated state of residence

**Proprietary and Confidential**



## Appendix B - About Canmark

- Since 1993 Canmark Technologies has combined market research, programming, and technical expertise with thoughtful attention to client needs. Our problem-solving orientation has earned the respect of business clients and market researchers across North America.
- With an experienced staff of technical experts and project managers specializing in various fields of data capture and manipulation, programming and software development, web design and scripting, Canmark is able to leverage superior technology and know-how to support projects of all types and scope in the most cost-effective manner possible.
- Areas of expertise include survey development and delivery, project and data management services, requirements gathering, data sampling, paper and web forms management, custom lasering and printing, distribution logistics, data processing, custom programming for data cleansing, reporting and data analysis, and project consulting.
- We stand ready to meet your data needs, if you have any questions, please do not hesitate to contact us.

## Appendix C - Contacts

Paul Isaacs, President  
pisaacs@canmarktech.com  
1-877-441-2057, ext. 11



Proprietary and Confidential