



JULY 2021

BOARD INFORMATION PACKAGE



## **MEMORANDUM**

TO: Members of the Airport Authority

FROM: Lew Bleiweis, A.A.E., Executive Director

DATE: July 9, 2021

### **Financial Report ([document](#))**

#### **Informational Reports:**

- A. May, 2021 Traffic Report ([document](#))
- B. May, 2021 Monthly Financial Report ([document](#))
- C. July, 2021 Development/Project Status Report ([document](#))

**Asheville Regional Airport  
Executive Summary  
May-21**

**AIRPORT ACTIVITY**

	Month	Variance to Prior Year	Calendar Year to Date	Variance to Prior Year
<b>Passenger Enplanements</b>	62,546	710.5%	195,581	29.4%
<b>Aircraft Operations</b>				
Commercial	2,437	296.9%	8,751	44.8%
Scheduled Flights	891	99.3%		
Flight Cancellations	1			
Seats	84,497	303.4%	342,072	34.5%
Load Factor	74.0%	100.9%	57.2%	(3.8%)
General Aviation	4,504	50.2%	16,233	21.7%
Military	285	418.2%	1,437	106.8%

**FINANCIAL RESULTS**

	Month	Variance to Budget	Fiscal Year to Date	Variance to Budget
<b>Operating Revenues</b>	\$ 1,332,640	41.4%	\$ 9,573,572	(7.6%)
<b>Operating Expenses</b>	714,835	(24.3%)	7,584,194	(29.7%)
<b>Net Operating Revenues before Depreciation</b>	<u>\$ 617,805</u>		<u>\$ 1,989,378</u>	
<b>Net Non-Operating Revenues</b> *	<u>\$ 1,094,349</u>	259.8%	<u>\$ 13,633,884</u>	307.5%
<small>(includes CARES funding listed below)</small>				
<b>Broadmoor Net Income</b>	\$ 101,697		\$ 228,798	
<b>Grants:</b>				
FAA AIP Grants	\$ 1,169,626		\$ 12,935,418	
NC Dept of Transportation Grants	-		7,548,564	
Total	<u>\$ 1,169,626</u>		<u>\$ 20,483,982</u>	
* CARES Funding	\$ 572,312		\$ 10,588,368	

**CASH**

Restricted	\$ 11,307,980
Designated for O&M Reserve	5,384,122
Designated for Emergency Repair	650,000
Unrestricted, Undesignated	2,801,979
Total	<u>\$ 20,144,081</u>
Broadmoor Cash Balance	<u>\$ 254,663</u>

**RECEIVABLES PAST DUE**

	Total	1-30 Days	31-60 Days	Over 60 Days
Advertising Customers	9,065	3,725	1,620	3,720
Allegiant	304	-	-	304
American	908	-	-	908
Elite	280	-	-	280
Enterprise	3,920	3,920	-	-
FAA	367	-	-	367
Paradies	24,723	19,646	5,077	-
Signature	547	355	-	192
Skywest	150	-	150	-
Spirit	341	-	-	341
Travelers	3,112	230	-	2,882
TSA	6,821	670	1,765	4,386
World Fuel Services	1,758	-	-	1,758
Worldwide	1,626	250	-	1,376
Miscellaneous	18,026	-	115	17,911
Total	<u>\$ 71,948</u>	<u>\$ 28,796</u>	<u>\$ 8,727</u>	<u>\$ 34,425</u>
% of Total Receivables	<u>7.58%</u>			

Note: Excludes balances paid subsequent to month-end.

Also excludes a balance of Board-approved deferred rents of \$6,326 for September 2020

**REVENUE BONDS PAYABLE**

	Original Amount	Current Balance
Parking Garage Revenue Bond, Series 2016A	\$ 15,750,000	\$ 15,750,000
Parking Garage Taxable Revenue Bond, Series 2016B	5,250,000	555,000
	<u>\$ 21,000,000</u>	<u>\$ 16,305,000</u>

**CAPITAL EXPENDITURES**

Annual Budget	\$ 76,457,636
Year-to-Date Spending	\$ 34,583,554



---

## MEMORANDUM

TO: Members of the Airport Authority  
FROM: Lew Bleiweis, A.A.E., Executive Director  
DATE: July 9, 2021

### ITEM DESCRIPTION – Information Section Item A

May, 2021 Traffic Report – Asheville Regional Airport

### SUMMARY

Passenger traffic in Asheville is on the rise after a year of decreased traffic due to the effects of the COVID-19 pandemic. May, 2021 overall passenger traffic numbers were up 722.4% compared to the same period last year, but were down by 13.6% compared to May, 2019. Passenger traffic numbers reflect a 710.5% increase in passenger enplanements from May, 2020 and a 13.1% decrease from May, 2019. Enplanements for Fiscal Year to Date total 387,209 which is a 36.3% decrease over the same period last year.

### AIRLINE PERFORMANCE

Allegiant Airlines: Year over Year passenger enplanements for Allegiant in May 2021 were up by 576.6%. There were no flight cancellations for the month.

American Airlines: American's May 2021 passenger enplanements represent a 467.8% increase over the same period last year. There was one flight cancellation for the month.

Delta Airlines: Enplanements for Delta in May 2021 increased by 4812.1%. There were no flight cancellations for the month.

United Airlines: In May 2021, United Airlines saw an increase in enplanements by 2566.3% over the same period last year. There were no flight cancellations for the month.

# Monthly Traffic Report

## Asheville Regional Airport

### May 2021



Category	May 2021	May 2020	Percentage Change	*CYTD-2021	*CYTD-2020	Percentage Change	*MOV12-2021	*MOV12-2020	Percentage Change
<b>Passenger Traffic</b>									
Enplaned	62,546	7,717	710.5%	195,581	151,108	29.4%	398,881	676,729	-41.1%
Deplaned	<u>61,605</u>	<u>7,379</u>	734.9%	<u>193,584</u>	<u>149,144</u>	29.8%	<u>395,004</u>	<u>676,829</u>	-41.6%
<b>Total</b>	<b>124,151</b>	<b>15,096</b>	<b>722.4%</b>	<b>389,165</b>	<b>300,252</b>	<b>29.6%</b>	<b>793,885</b>	<b>1,353,558</b>	<b>-41.3%</b>
<b>Aircraft Operations</b>									
Airlines	1,314	378	247.6%	5,421	3,368	61.0%	11,394	11,844	-3.8%
Commuter/ Air Taxi	<u>1,123</u>	<u>236</u>	375.8%	3,330	2,676	24.4%	8,169	10,404	-21.5%
<b>Subtotal</b>	<b><u>2,437</u></b>	<b><u>614</u></b>	<b>296.9%</b>	<b><u>8,751</u></b>	<b><u>6,044</u></b>	<b>44.8%</b>	<b><u>19,563</u></b>	<b><u>22,248</u></b>	<b>-12.1%</b>
General Aviation	4,504	2,998	50.2%	16,233	13,338	21.7%	41,916	43,756	-4.2%
Military	<u>285</u>	<u>55</u>	418.2%	<u>1,437</u>	<u>695</u>	106.8%	<u>3,069</u>	<u>2,500</u>	22.8%
<b>Subtotal</b>	<b><u>4,789</u></b>	<b><u>3,053</u></b>	<b>56.9%</b>	<b><u>17,670</u></b>	<b><u>14,033</u></b>	<b>25.9%</b>	<b><u>44,985</u></b>	<b><u>46,256</u></b>	<b>-2.7%</b>
<b>Total</b>	<b>7,226</b>	<b>3,667</b>	<b>97.1%</b>	<b>26,421</b>	<b>20,077</b>	<b>31.6%</b>	<b>64,548</b>	<b>68,504</b>	<b>-5.8%</b>
<b>Fuel Gallons</b>									
100LL	16,308	7,936	105.5%	65,880	40,873	61.2%	168,823	147,944	14.1%
Jet A (GA)	148,904	44,587	234.0%	514,068	237,715	116.3%	1,493,028	1,221,825	22.2%
<b>Subtotal</b>	<b><u>165,212</u></b>	<b><u>52,523</u></b>	<b>214.6%</b>	<b><u>579,948</u></b>	<b><u>278,588</u></b>	<b>108.2%</b>	<b><u>1,661,851</u></b>	<b><u>1,369,769</u></b>	<b>21.3%</b>
Jet A (A/L)	<u>555,966</u>	<u>0</u>	#Div/0!	<u>2,646,340</u>	<u>1,562,368</u>	69.4%	<u>5,232,417</u>	<u>6,180,685</u>	-15.3%
<b>Total</b>	<b>721,178</b>	<b>52,523</b>	<b>1273.1%</b>	<b>3,226,288</b>	<b>1,840,956</b>	<b>75.3%</b>	<b>6,894,268</b>	<b>7,550,454</b>	<b>-8.7%</b>

\*CYTD = Calendar Year to Date and \*Mov12 = Moving Twelve Months.

Monday, June 21, 2021

# Airline Enplanements, Seats, and Load Factors

## Asheville Regional Airport

May 2021



	May 2021	May 2020	Percentage Change	*CYTD-2021	*CYTD-2020	Percentage Change
<b>Allegiant Air</b>						
Enplanements	28,128	4,157	576.6%	96,913	69,177	40.1%
Seats	40,587	8,076	402.6%	171,564	108,285	58.4%
Load Factor	69.3%	51.5%	34.6%	56.5%	63.9%	-11.6%
<b>American Airlines</b>						
Enplanements	17,010	2,996	467.8%	52,244	39,364	32.7%
Seats	21,525	9,020	138.6%	86,462	73,244	18.0%
Load Factor	79.0%	33.2%	137.9%	60.4%	53.7%	12.4%
<b>Delta Air Lines</b>						
Enplanements	12,182	248	4812.1%	32,408	25,905	25.1%
Seats	16,209	2,010	706.4%	60,670	42,875	41.5%
Load Factor	75.2%	12.3%	509.1%	53.4%	60.4%	-11.6%
<b>Spirit Airlines</b>						
Enplanements	0	120	-100.0%	0	5,385	-100.0%
Seats	0	290	-100.0%	0	10,324	-100.0%
Load Factor	#Num!	41.4%	#Type!	#Num!	52.2%	#Type!
<b>United Airlines</b>						
Enplanements	5,226	196	2566.3%	14,016	11,277	24.3%
Seats	6,176	1,550	298.5%	23,376	19,628	19.1%
Load Factor	84.6%	12.6%	569.2%	60.0%	57.5%	4.4%
<b>Totals</b>						
Enplanements	62,546	7,717	710.5%	195,581	151,108	29.4%
Seats	84,497	20,946	303.4%	342,072	254,356	34.5%
Load Factor	74.0%	36.8%	100.9%	57.2%	59.4%	-3.8%

Monday, June 21, 2021

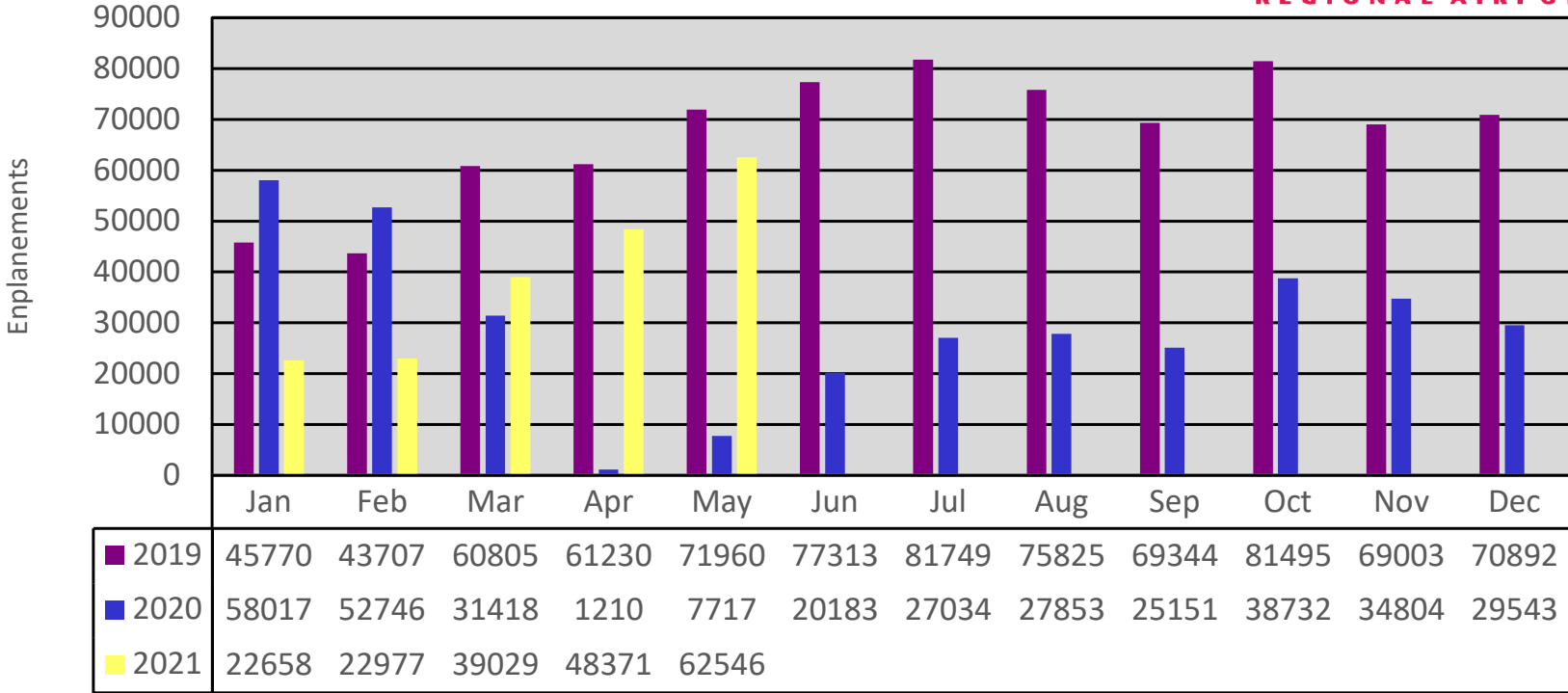
\*CTYD = Calendar Year to Date and \*Mov12 = Moving Twelve Months.

# Airline Flight Completions Asheville Regional Airport May 2021



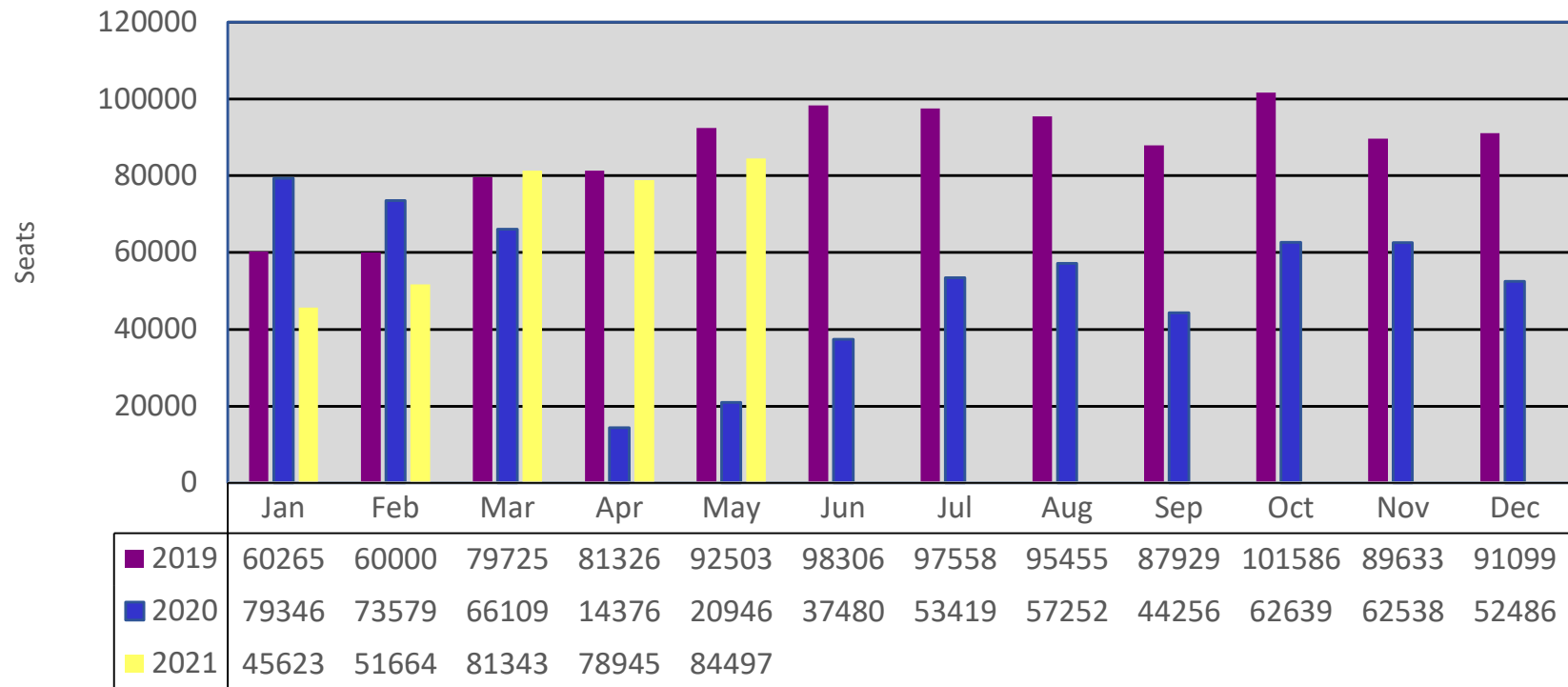
Airline	Scheduled Flights	Field	Cancellations Due To			Total Cancellations	Percentage of Completed Flights
			Mechanical	Weather	Other		
Allegiant Air	228	0	0	0	0	0	100.0%
American Airlines	308	0	0	1	0	1	99.7%
Delta Air Lines	232	0	0	0	0	0	100.0%
United Airlines	123	0	0	0	0	0	100.0%
<b>Total</b>	<b>891</b>	<b>0</b>	<b>0</b>	<b>1</b>	<b>0</b>	<b>1</b>	<b>99.9%</b>

# Monthly Enplanements By Year Asheville Regional Airport

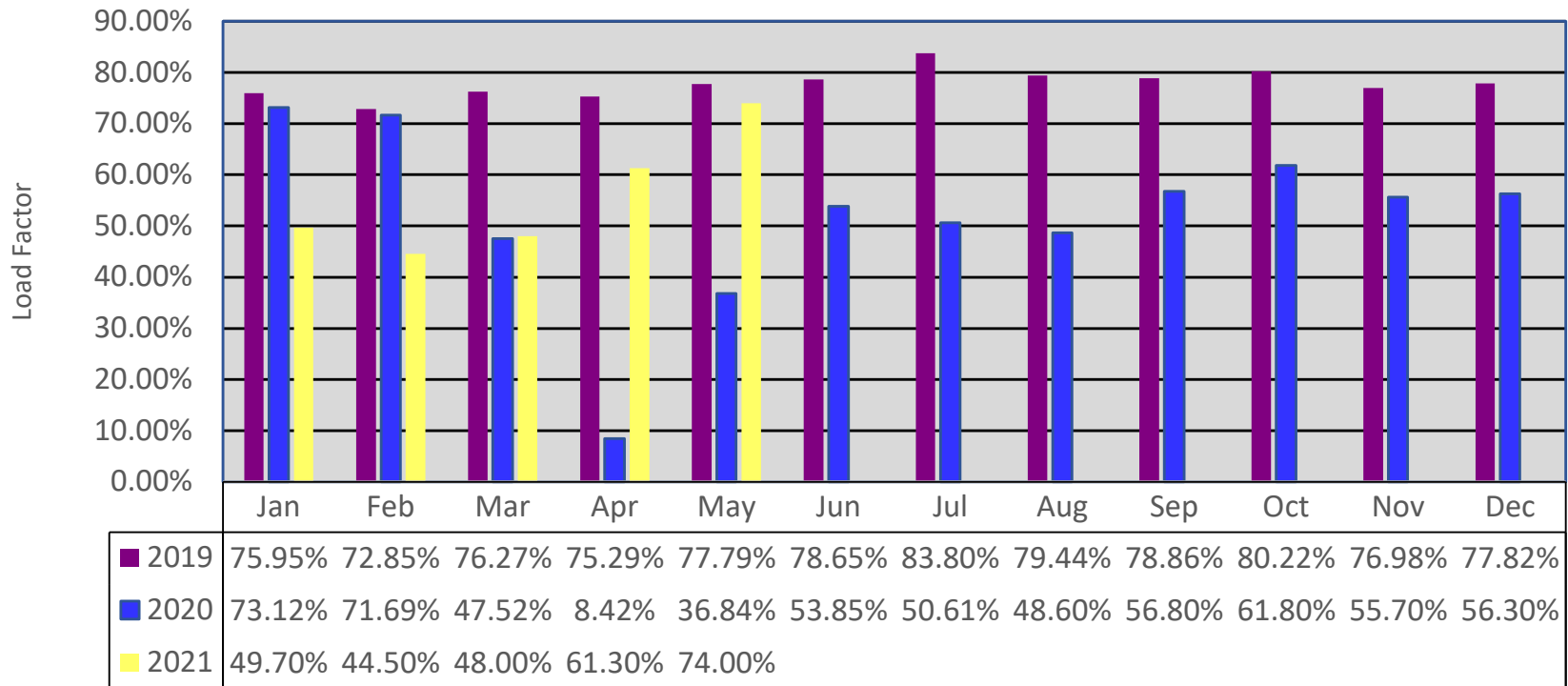




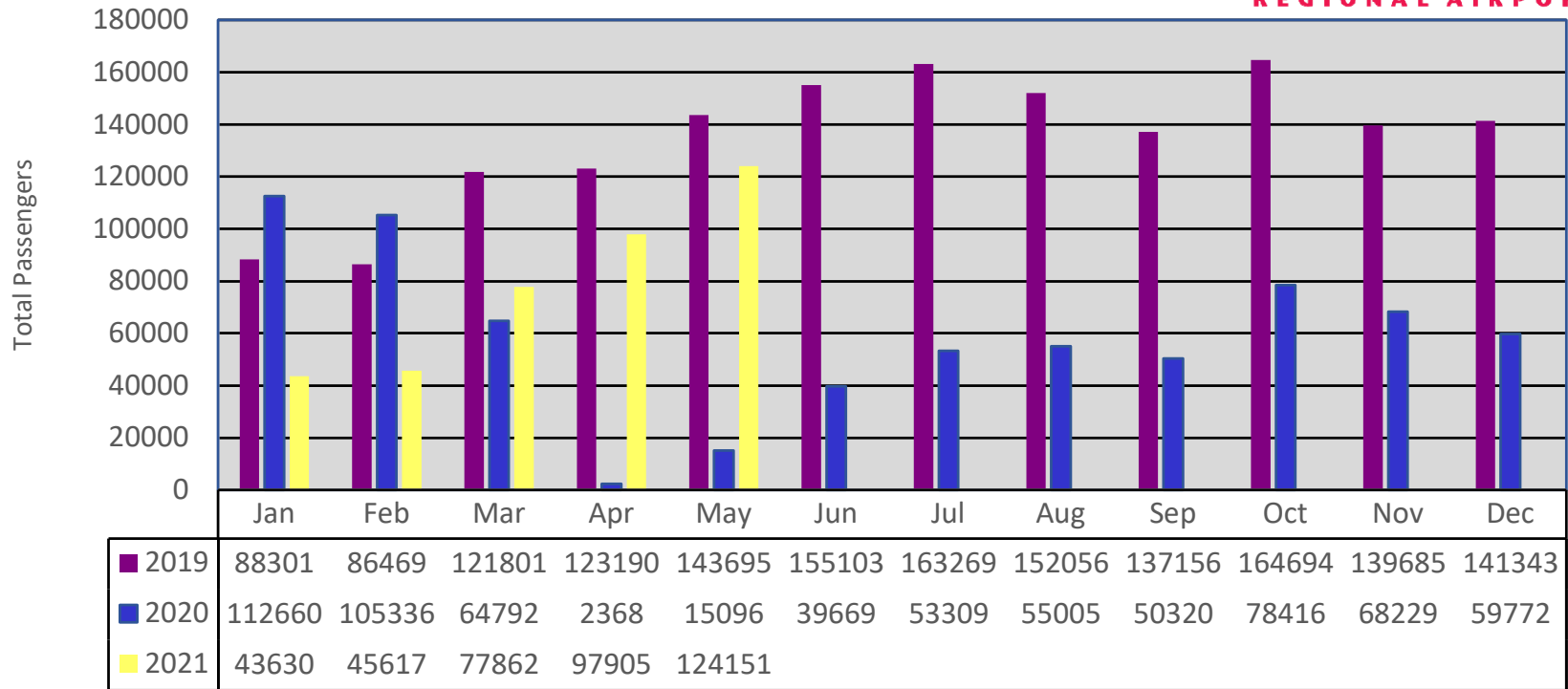
# Monthly Seats By Year Asheville Regional Airport



# Monthly Load Factors By Year Asheville Regional Airport



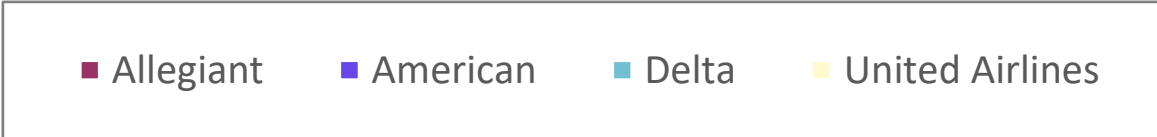
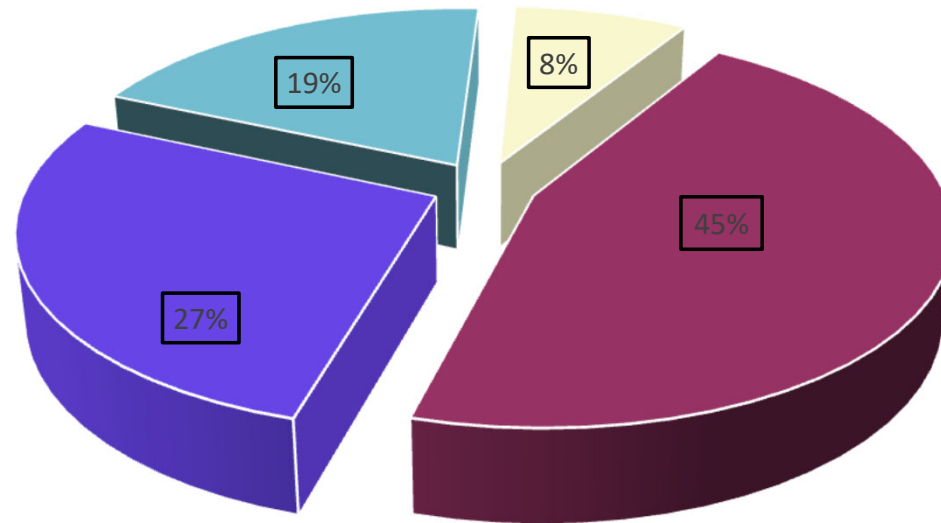
# Total Monthly Passengers By Year Asheville Regional Airport



# Airline Market Share Analysis (Enplanements)

## Asheville Regional Airport

Report Period From May 2021 Through May 2021



AVL - Three month schedule Summary Report  
 July 2021 to September 2021 vs. July 2020 to September 2020 vs. July 2019 to September 2019  
 1-Jul-21

Mkt AI	Travel Period		Jul 2021		Jul 2020		Jul 2019		Diff YoY		Percent Diff YoY		Diff 2YoY		Percent Diff 2YoY		
	Orig	Dest	Ops/Week	Seats	Ops/Week	Seats	Ops/Week	Seats	Ops/Week	Seats	Ops/Week	Seats	Ops/Week	Seats	Ops/Week	Seats	
7Q	AVL-VRB	AVL	VRB	0	0	0	0	2	100	0	0	-	-	(2)	(100)	(100.0%)	(100.0%)
7Q	VRB-AVL	VRB	AVL	0	0	0	0	2	100	0	0	-	-	(2)	(100)	(100.0%)	(100.0%)
AA	AVL-BOS	AVL	BOS	1	76	0	0	0	0	1	76	-	-	1	76	-	-
AA	AVL-CLT	AVL	CLT	48	2,959	31	2,356	55	3,586	17	603	54.8%	25.6%	(7)	(627)	(12.7%)	(17.5%)
AA	AVL-DCA	AVL	DCA	7	532	0	0	0	0	7	532	-	-	7	532	-	-
AA	AVL-DFW	AVL	DFW	21	1,596	7	532	7	532	14	1,064	200.0%	200.0%	14	1,064	200.0%	200.0%
AA	AVL-LGA	AVL	LGA	7	521	0	0	2	152	7	521	-	-	5	369	250.0%	242.8%
AA	AVL-ORD	AVL	ORD	7	455	1	65	0	0	6	390	600.0%	600.0%	7	455	-	-
AA	AVL-PHL	AVL	PHL	13	676	7	455	7	350	6	221	85.7%	48.6%	6	326	85.7%	93.1%
AA	BOS-AVL	BOS	AVL	1	76	0	0	0	0	1	76	-	-	1	76	-	-
AA	CLT-AVL	CLT	AVL	48	2,959	31	2,356	55	3,586	17	603	54.8%	25.6%	(7)	(627)	(12.7%)	(17.5%)
AA	DCA-AVL	DCA	AVL	7	532	0	0	0	0	7	532	-	-	7	532	-	-
AA	DFW-AVL	DFW	AVL	21	1,596	7	532	7	532	14	1,064	200.0%	200.0%	14	1,064	200.0%	200.0%
AA	LGA-AVL	LGA	AVL	7	521	0	0	2	152	7	521	-	-	5	369	250.0%	242.8%
AA	ORD-AVL	ORD	AVL	7	455	1	65	0	0	6	390	600.0%	600.0%	7	455	-	-
AA	PHL-AVL	PHL	AVL	13	676	7	455	7	350	6	221	85.7%	48.6%	6	326	85.7%	93.1%
DL	ATL-AVL	ATL	AVL	36	3,314	28	2,128	55	3,664	8	1,186	28.6%	55.7%	(19)	(350)	(34.5%)	(9.6%)
DL	AVL-DTW	AVL	DTW	0	0	0	0	1	50	0	0	-	-	(1)	(50)	(100.0%)	(100.0%)
DL	AVL-ATL	AVL	ATL	36	3,314	28	2,128	55	3,664	8	1,186	28.6%	55.7%	(19)	(350)	(34.5%)	(9.6%)
DL	DTW-AVL	DTW	AVL	0	0	0	0	1	50	0	0	-	-	(1)	(50)	(100.0%)	(100.0%)
DL	AVL-LGA	AVL	LGA	5	380	0	0	1	76	5	380	-	-	4	304	400.0%	400.0%
DL	LGA-AVL	LGA	AVL	5	380	0	0	1	76	5	380	-	-	4	304	400.0%	400.0%
G4	AUS-AVL	AUS	AVL	2	354	2	354	0	0	0	0	0.0%	0.0%	2	354	-	-
G4	AVL-AUS	AVL	AUS	2	354	2	354	0	0	0	0	0.0%	0.0%	2	354	-	-
G4	AVL-BOS	AVL	BOS	2	354	0	0	0	0	2	354	-	-	2	354	-	-
G4	AVL-BWI	AVL	BWI	2	354	2	372	2	372	0	(18)	0.0%	(4.8%)	0	(18)	0.0%	(4.8%)
G4	AVL-DEN	AVL	DEN	2	354	2	354	4	744	0	0	0.0%	0.0%	(2)	(390)	(50.0%)	(52.4%)
G4	AVL-EWR	AVL	EWR	4	708	2	354	5	930	2	354	100.0%	100.0%	(1)	(222)	(20.0%)	(23.9%)
G4	AVL-FLL	AVL	FLL	13	2,355	6	1,062	16	2,922	7	1,293	116.7%	121.8%	(3)	(567)	(18.8%)	(19.4%)
G4	AVL-HOU	AVL	HOU	2	354	2	354	0	0	0	0	0.0%	0.0%	2	354	-	-
G4	AVL-LAS	AVL	LAS	2	354	0	0	0	0	2	354	-	-	2	354	-	-
G4	AVL-MDW	AVL	MDW	2	354	2	354	0	0	0	0	0.0%	0.0%	2	354	-	-
G4	AVL-PBI	AVL	PBI	2	354	2	354	0	0	0	0	0.0%	0.0%	2	354	-	-
G4	AVL-PGD	AVL	PGD	4	726	4	717	5	930	0	9	0.0%	1.3%	(1)	(204)	(20.0%)	(21.9%)
G4	AVL-PIE	AVL	PIE	11	1,956	6	1,080	11	1,956	5	876	83.3%	81.1%	0	0	0.0%	0.0%
G4	AVL-SFB	AVL	SFB	14	2,523	5	903	9	1,554	9	1,620	180.0%	179.4%	5	969	55.6%	62.4%
G4	AVL-SRQ	AVL	SRQ	2	354	2	354	2	372	0	0	0.0%	0.0%	0	(18)	0.0%	(4.8%)
G4	AVL-VPS	AVL	VPS	2	354	0	0	0	0	2	354	-	-	2	354	-	-
G4	BOS-AVL	BOS	AVL	2	354	0	0	0	0	2	354	-	-	2	354	-	-
G4	BWI-AVL	BWI	AVL	2	354	2	372	2	372	0	(18)	0.0%	(4.8%)	0	(18)	0.0%	(4.8%)
G4	DEN-AVL	DEN	AVL	2	354	2	354	4	744	0	0	0.0%	0.0%	(2)	(390)	(50.0%)	(52.4%)
G4	EWR-AVL	EWR	AVL	4	708	2	354	5	930	2	354	100.0%	100.0%	(1)	(222)	(20.0%)	(23.9%)
G4	FLL-AVL	FLL	AVL	13	2,355	6	1,062	16	2,922	7	1,293	116.7%	121.8%	(3)	(567)	(18.8%)	(19.4%)
G4	HOU-AVL	HOU	AVL	2	354	2	354	0	0	0	0	0.0%	0.0%	2	354	-	-
G4	LAS-AVL	LAS	AVL	2	354	0	0	0	0	2	354	-	-	2	354	-	-
G4	MDW-AVL	MDW	AVL	2	354	2	354	0	0	0	0	0.0%	0.0%	2	354	-	-
G4	PBI-AVL	PBI	AVL	2	354	2	354	0	0	0	0	0.0%	0.0%	2	354	-	-
G4	PGD-AVL	PGD	AVL	4	726	4	717	5	930	0	9	0.0%	1.3%	(1)	(204)	(20.0%)	(21.9%)
G4	PIE-AVL	PIE	AVL	11	1,956	6	1,080	11	1,956	5	876	83.3%	81.1%	0	0	0.0%	0.0%
G4	SFB-AVL	SFB	AVL	14	2,523	5	903	9	1,554	9	1,620	180.0%	179.4%	5	969	55.6%	62.4%
G4	SRQ-AVL	SRQ	AVL	2	354	2	354	2	372	0	0	0.0%	0.0%	0	(18)	0.0%	(4.8%)
G4	VPS-AVL	VPS	AVL	2	354	0	0	0	0	2	354	-	-	2	354	-	-
NK	AVL-FLL	AVL	FLL	0	0	0	0	4	580	0	0	-	-	(4)	(580)	(100.0%)	(100.0%)
NK	AVL-GSO	AVL	GSO	0	0	0	0	0	0	0	0	-	-	0	0	-	-
NK	AVL-MCO	AVL	MCO	0	0	0	0	4	580	0	0	-	-	(4)	(580)	(100.0%)	(100.0%)
NK	AVL-TPA	AVL	TPA	0	0	0	0	3	435	0	0	-	-	(3)	(435)	(100.0%)	(100.0%)
NK	FLL-AVL	FLL	AVL	0	0	0	0	4	580	0	0	-	-	(4)	(580)	(100.0%)	(100.0%)
NK	MCO-AVL	MCO	AVL	0	0	0	0	4	580	0	0	-	-	(4)	(580)	(100.0%)	(100.0%)
NK	TPA-AVL	TPA	AVL	0	0	0	0	3	435	0	0	-	-	(3)	(435)	(100.0%)	(100.0%)
UA	AVL-EWR	AVL	EWR	7	350	0	0	8	400	7	350	-	-	(1)	(50)	(12.5%)	(12.5%)
UA	AVL-IAD	AVL	IAD	21	1,050	14	700	16	800	7	350	50.0%	50.0%	5	250	31.3%	31.3%
UA	AVL-ORD	AVL	ORD	28	1,400	7	350	21	1,050	21	1,050	300.0%	300.0%	7	350	33.3%	33.3%
UA	EWR-AVL	EWR	AVL	7	350	0	0	8	400	7	350	-	-	(1)	(50)	(12.5%)	(12.5%)
UA	IAD-AVL	IAD	AVL	21	1,050	14	700	16	800	7	350	50.0%	50.0%	5	250	31.3%	31.3%
UA	ORD-AVL	ORD	AVL	28	1,400	7	350	21	1,050	21	1,050	300.0%	300.0%	7	350	33.3%	33.3%
Total				534	50,234	264	26,396	480	44,270	270	23,838	102.3%	90.3%	54	5,964	11.3%	13.5%

Mkt AI	Travel Period		Aug 2021	Aug 2021	Aug 2020		Aug 2019		Diff YoY		Percent Diff YoY		Diff 2YoY		Percent Diff 2YoY	
	Orig	Dest	Ops/Week	Seats	Ops/Week	Seats	Ops/Week	Seats	Ops/Week	Seats	Ops/Week	Seats	Ops/Week	Seats	Ops/Week	Seats
7Q	AVL-VRB	VRB	0	0	0	0	2	100	0	0	-	-	(2)	(100)	(100.0%)	(100.0%)
7Q	VRB-AVL	VRB	0	0	0	0	2	100	0	0	-	-	(2)	(100)	(100.0%)	(100.0%)
AA	AVL-BOS	AVL	1	76	0	0	0	0	1	76	-	-	1	76	-	-
AA	AVL-CLT	AVL	45	3,005	31	2,356	55	3,586	14	649	45.2%	27.5%	(10)	(581)	(18.2%)	(16.2%)
AA	AVL-DCA	AVL	7	510	0	0	0	0	7	510	-	-	7	510	-	-
AA	AVL-DFW	AVL	21	1,596	7	532	7	532	14	1,064	200.0%	200.0%	14	1,064	200.0%	200.0%
AA	AVL-LGA	AVL	1	76	0	0	2	152	1	76	-	-	(1)	(76)	(50.0%)	(50.0%)
AA	AVL-ORD	AVL	7	532	0	0	0	0	7	532	-	-	7	532	-	-
AA	AVL-PHL	AVL	13	650	0	0	7	350	13	650	-	-	6	300	85.7%	85.7%
AA	BOS-AVL	BOS	1	76	0	0	0	0	1	76	-	-	1	76	-	-
AA	CLT-AVL	CLT	45	3,005	31	2,356	55	3,586	14	649	45.2%	27.5%	(10)	(581)	(18.2%)	(16.2%)
AA	DCA-AVL	DCA	7	510	0	0	0	0	7	510	-	-	7	510	-	-
AA	DFW-AVL	DFW	21	1,596	7	532	7	532	14	1,064	200.0%	200.0%	14	1,064	200.0%	200.0%
AA	LGA-AVL	LGA	1	76	0	0	2	152	1	76	-	-	(1)	(76)	(50.0%)	(50.0%)
AA	ORD-AVL	ORD	7	532	0	0	0	0	7	532	-	-	7	532	-	-
AA	PHL-AVL	PHL	13	650	0	0	7	350	13	650	-	-	6	300	85.7%	85.7%
DL	ATL-AVL	ATL	34	3,672	33	2,984	55	3,690	1	688	3.0%	23.1%	(21)	(18)	(38.2%)	(0.5%)
DL	AVL-ATL	AVL	34	3,672	33	2,984	55	3,690	1	688	3.0%	23.1%	(21)	(18)	(38.2%)	(0.5%)
DL	AVL-DTW	AVL	0	0	0	0	1	50	0	0	-	-	(1)	(50)	(100.0%)	(100.0%)
DL	AVL-LGA	AVL	0	0	0	0	1	76	0	0	-	-	(1)	(76)	(100.0%)	(100.0%)
DL	DTW-AVL	DTW	0	0	0	0	1	50	0	0	-	-	(1)	(50)	(100.0%)	(100.0%)
DL	LGA-AVL	LGA	0	0	0	0	1	76	0	0	-	-	(1)	(76)	(100.0%)	(100.0%)
G4	AUS-AVL	AUS	2	354	2	354	0	0	0	0	0.0%	0.0%	2	354	-	-
G4	AVL-AUS	AVL	2	354	2	354	0	0	0	0	0.0%	0.0%	2	354	-	-
G4	AVL-BOS	AVL	2	354	0	0	0	0	2	354	-	-	2	354	-	-
G4	AVL-BWI	AVL	2	372	2	372	2	372	0	0	0.0%	0.0%	0	0	0.0%	0.0%
G4	AVL-DEN	AVL	2	354	2	354	3	558	0	0	0.0%	0.0%	(1)	(204)	(33.3%)	(36.6%)
G4	AVL-EWR	AVL	2	354	2	354	5	930	0	0	0.0%	0.0%	(3)	(576)	(60.0%)	(61.9%)
G4	AVL-FLL	AVL	8	1,416	7	1,239	14	2,541	1	177	14.3%	14.3%	(6)	(1,125)	(42.9%)	(44.3%)
G4	AVL-HOU	AVL	2	354	2	354	0	0	0	0	0.0%	0.0%	2	354	-	-
G4	AVL-LAS	AVL	2	354	0	0	0	0	2	354	-	-	2	354	-	-
G4	AVL-MDW	AVL	2	354	2	354	0	0	0	0	0.0%	0.0%	2	354	-	-
G4	AVL-PBI	AVL	2	354	2	354	0	0	0	0	0.0%	0.0%	2	354	-	-
G4	AVL-PGD	AVL	2	354	4	717	4	735	(2)	(363)	(50.0%)	(50.6%)	(2)	(381)	(50.0%)	(51.8%)
G4	AVL-PIE	AVL	7	1,239	8	1,434	11	1,866	(1)	(195)	(12.5%)	(13.6%)	(4)	(627)	(36.4%)	(33.6%)
G4	AVL-SFB	AVL	7	1,275	6	1,062	9	1,524	1	213	16.7%	20.1%	(2)	(249)	(22.2%)	(16.3%)
G4	AVL-SRQ	AVL	0	0	2	354	3	558	(2)	(354)	(100.0%)	(100.0%)	(3)	(558)	(100.0%)	(100.0%)
G4	AVL-VPS	AVL	2	354	0	0	0	0	2	354	-	-	2	354	-	-
G4	BOS-AVL	BOS	2	354	0	0	0	0	2	354	-	-	2	354	-	-
G4	BWI-AVL	BWI	2	372	2	372	2	372	0	0	0.0%	0.0%	0	0	0.0%	0.0%
G4	DEN-AVL	DEN	2	354	2	354	3	558	0	0	0.0%	0.0%	(1)	(204)	(33.3%)	(36.6%)
G4	EWR-AVL	EWR	2	354	2	354	5	930	0	0	0.0%	0.0%	(3)	(576)	(60.0%)	(61.9%)
G4	FLL-AVL	FLL	8	1,416	7	1,239	14	2,541	1	177	14.3%	14.3%	(6)	(1,125)	(42.9%)	(44.3%)
G4	HOU-AVL	HOU	2	354	2	354	0	0	0	0	0.0%	0.0%	2	354	-	-
G4	LAS-AVL	LAS	2	354	0	0	0	0	2	354	-	-	2	354	-	-
G4	MDW-AVL	MDW	2	354	2	354	0	0	0	0	0.0%	0.0%	2	354	-	-
G4	PBI-AVL	PBI	2	354	2	354	0	0	0	0	0.0%	0.0%	2	354	-	-
G4	PGD-AVL	PGD	2	354	4	717	4	735	(2)	(363)	(50.0%)	(50.6%)	(2)	(381)	(50.0%)	(51.8%)
G4	PIE-AVL	PIE	7	1,239	8	1,434	11	1,866	(1)	(195)	(12.5%)	(13.6%)	(4)	(627)	(36.4%)	(33.6%)
G4	SFB-AVL	SFB	7	1,275	6	1,062	9	1,524	1	213	16.7%	20.1%	(2)	(249)	(22.2%)	(16.3%)
G4	SRQ-AVL	SRQ	0	0	2	354	3	558	(2)	(354)	(100.0%)	(100.0%)	(3)	(558)	(100.0%)	(100.0%)
G4	VPS-AVL	VPS	2	354	0	0	0	0	2	354	-	-	2	354	-	-
NK	AVL-FLL	AVL	0	0	0	0	4	580	0	0	-	-	(4)	(580)	(100.0%)	(100.0%)
NK	AVL-GSO	AVL	0	0	0	0	0	0	0	0	-	-	0	0	-	-
NK	AVL-MCO	AVL	0	0	0	0	4	580	0	0	-	-	(4)	(580)	(100.0%)	(100.0%)
NK	AVL-TPA	AVL	0	0	0	0	3	435	0	0	-	-	(3)	(435)	(100.0%)	(100.0%)
NK	FLL-AVL	FLL	0	0	0	0	4	580	0	0	-	-	(4)	(580)	(100.0%)	(100.0%)
NK	MCO-AVL	MCO	0	0	0	0	4	580	0	0	-	-	(4)	(580)	(100.0%)	(100.0%)
NK	TPA-AVL	TPA	0	0	0	0	3	435	0	0	-	-	(3)	(435)	(100.0%)	(100.0%)
UA	AVL-EWR	AVL	7	350	0	0	8	400	7	350	-	-	(1)	(50)	(12.5%)	(12.5%)
UA	AVL-IAD	AVL	21	1,232	14	700	16	800	7	532	50.0%	76.0%	5	432	31.3%	54.0%
UA	AVL-ORD	AVL	28	1,582	14	700	28	1,400	14	882	100.0%	126.0%	0	182	0.0%	13.0%
UA	EWR-AVL	EWR	7	350	0	0	8	400	7	350	-	-	(1)	(50)	(12.5%)	(12.5%)
UA	IAD-AVL	IAD	21	1,232	14	700	16	800	7	532	50.0%	76.0%	5	432	31.3%	54.0%
UA	ORD-AVL	ORD	28	1,582	14	700	28	1,400	14	882	100.0%	126.0%	0	182	0.0%	13.0%
Total			458	42,246	280	29,148	488	43,630	178	13,098	63.6%	44.9%	(30)	(1,384)	(6.1%)	(3.2%)

Mkt AI	Travel Period		Sep 2021	Sep 2021	Sep 2020	Sep 2020	Sep 2019	Sep 2019	Diff YoY		Percent Diff YoY		Diff 2YoY		Percent Diff 2YoY	
	Orig	Dest	Ops/Week	Seats	Ops/Week	Seats	Ops/Week	Seats	Ops/Week	Seats	Ops/Week	Seats	Ops/Week	Seats	Ops/Week	Seats
7Q	AVL-VRB	VRB	0	0	0	0	0	0	0	0	-	-	0	0	-	-
7Q	VRB-AVL	VRB	0	0	0	0	0	0	0	0	-	-	0	0	-	-
AA	AVL-BOS	AVL	1	76	0	0	0	0	1	76	-	-	1	76	-	-
AA	AVL-CLT	AVL	43	2,879	35	2,660	55	3,778	8	219	22.9%	8.2%	(12)	(899)	(21.8%)	(23.8%)
AA	AVL-DCA	AVL	7	532	0	0	0	0	7	532	-	-	7	532	-	-
AA	AVL-DFW	AVL	14	1,064	7	532	7	532	7	532	100.0%	100.0%	7	532	100.0%	100.0%
AA	AVL-LGA	AVL	0	0	0	0	2	152	0	0	-	-	(2)	(152)	(100.0%)	(100.0%)
AA	AVL-ORD	AVL	6	456	0	0	0	0	6	456	-	-	6	456	-	-
AA	AVL-PHL	AVL	13	650	0	0	7	350	13	650	-	-	6	300	85.7%	85.7%
AA	BOS-AVL	BOS	1	76	0	0	0	0	1	76	-	-	1	76	-	-
AA	CLT-AVL	CLT	43	2,879	35	2,660	55	3,778	8	219	22.9%	8.2%	(12)	(899)	(21.8%)	(23.8%)
AA	DCA-AVL	DCA	7	532	0	0	0	0	7	532	-	-	7	532	-	-
AA	DFW-AVL	DFW	14	1,064	7	532	7	532	7	532	100.0%	100.0%	7	532	100.0%	100.0%
AA	LGA-AVL	LGA	0	0	0	0	2	152	0	0	-	-	(2)	(152)	(100.0%)	(100.0%)
AA	ORD-AVL	ORD	6	456	0	0	0	0	6	456	-	-	6	456	-	-
AA	PHL-AVL	PHL	13	650	0	0	7	350	13	650	-	-	6	300	85.7%	85.7%
DL	ATL-AVL	ATL	42	3,668	33	2,746	46	3,972	9	922	27.3%	33.6%	(4)	(304)	(8.7%)	(7.7%)
DL	AVL-ATL	AVL	42	3,668	33	2,746	46	3,972	9	922	27.3%	33.6%	(4)	(304)	(8.7%)	(7.7%)
DL	AVL-DTW	AVL	0	0	0	0	1	50	0	0	-	-	(1)	(50)	(100.0%)	(100.0%)
DL	AVL-LGA	AVL	0	0	0	0	0	0	0	0	-	-	0	0	-	-
DL	DTW-AVL	DTW	0	0	0	0	1	50	0	0	-	-	(1)	(50)	(100.0%)	(100.0%)
DL	LGA-AVL	LGA	0	0	0	0	0	0	0	0	-	-	0	0	-	-
G4	AUS-AVL	AUS	2	354	0	0	0	0	2	354	-	-	2	354	-	-
G4	AVL-AUS	AVL	2	354	0	0	0	0	2	354	-	-	2	354	-	-
G4	AVL-BOS	AVL	2	354	2	372	0	0	0	(18)	0.0%	(4.8%)	2	354	-	-
G4	AVL-BWI	AVL	2	312	2	312	2	372	0	0	0.0%	0.0%	0	(60)	0.0%	(16.1%)
G4	AVL-DEN	AVL	2	354	0	0	2	372	2	354	-	-	0	(18)	0.0%	(4.8%)
G4	AVL-EWR	AVL	2	354	2	372	4	744	0	(18)	0.0%	(4.8%)	(2)	(390)	(50.0%)	(52.4%)
G4	AVL-FLL	AVL	10	1,770	4	708	14	2,523	6	1,062	150.0%	150.0%	(4)	(753)	(28.6%)	(29.8%)
G4	AVL-HOU	AVL	2	354	2	372	0	0	0	(18)	0.0%	(4.8%)	2	354	-	-
G4	AVL-LAS	AVL	2	354	0	0	0	0	2	354	-	-	2	354	-	-
G4	AVL-MDW	AVL	2	354	2	372	0	0	0	(18)	0.0%	(4.8%)	2	354	-	-
G4	AVL-PBI	AVL	2	354	2	372	0	0	0	(18)	0.0%	(4.8%)	2	354	-	-
G4	AVL-PGD	AVL	2	354	2	372	2	354	0	(18)	0.0%	(4.8%)	0	0	0.0%	0.0%
G4	AVL-PIE	AVL	4	708	4	708	9	1,629	0	0	0.0%	0.0%	(5)	(921)	(55.6%)	(56.5%)
G4	AVL-SFB	AVL	5	894	4	654	5	900	1	240	25.0%	36.7%	0	(6)	0.0%	(0.7%)
G4	AVL-SRQ	AVL	0	0	0	0	2	372	0	0	-	-	(2)	(372)	(100.0%)	(100.0%)
G4	AVL-VPS	AVL	2	354	0	0	0	0	2	354	-	-	2	354	-	-
G4	BOS-AVL	BOS	2	354	2	372	0	0	0	(18)	0.0%	(4.8%)	2	354	-	-
G4	BWI-AVL	BWI	2	312	2	312	2	372	0	0	0.0%	0.0%	0	(60)	0.0%	(16.1%)
G4	DEN-AVL	DEN	2	354	0	0	2	372	2	354	-	-	0	(18)	0.0%	(4.8%)
G4	EWR-AVL	EWR	2	354	2	372	4	744	0	(18)	0.0%	(4.8%)	(2)	(390)	(50.0%)	(52.4%)
G4	FLL-AVL	FLL	10	1,770	4	708	14	2,523	6	1,062	150.0%	150.0%	(4)	(753)	(28.6%)	(29.8%)
G4	HOU-AVL	HOU	2	354	2	372	0	0	0	(18)	0.0%	(4.8%)	2	354	-	-
G4	LAS-AVL	LAS	2	354	0	0	0	0	2	354	-	-	2	354	-	-
G4	MDW-AVL	MDW	2	354	2	372	0	0	0	(18)	0.0%	(4.8%)	2	354	-	-
G4	PBI-AVL	PBI	2	354	2	372	0	0	0	(18)	0.0%	(4.8%)	2	354	-	-
G4	PGD-AVL	PGD	2	354	2	372	2	354	0	(18)	0.0%	(4.8%)	0	0	0.0%	0.0%
G4	PIE-AVL	PIE	4	708	4	708	9	1,629	0	0	0.0%	0.0%	(5)	(921)	(55.6%)	(56.5%)
G4	SFB-AVL	SFB	5	894	4	654	5	900	1	240	25.0%	36.7%	0	(6)	0.0%	(0.7%)
G4	SRQ-AVL	SRQ	0	0	0	0	2	372	0	0	-	-	(2)	(372)	(100.0%)	(100.0%)
G4	VPS-AVL	VPS	2	354	0	0	0	0	2	354	-	-	2	354	-	-
NK	AVL-FLL	AVL	0	0	0	0	7	1,015	0	0	-	-	(7)	(1,015)	(100.0%)	(100.0%)
NK	AVL-GSO	AVL	0	0	0	0	0	0	0	0	-	-	0	0	-	-
NK	AVL-MCO	AVL	0	0	0	0	3	435	0	0	-	-	(3)	(435)	(100.0%)	(100.0%)
NK	AVL-TPA	AVL	0	0	0	0	2	290	0	0	-	-	(2)	(290)	(100.0%)	(100.0%)
NK	FLL-AVL	FLL	0	0	0	0	7	1,015	0	0	-	-	(7)	(1,015)	(100.0%)	(100.0%)
NK	MCO-AVL	MCO	0	0	0	0	3	435	0	0	-	-	(3)	(435)	(100.0%)	(100.0%)
NK	TPA-AVL	TPA	0	0	0	0	2	290	0	0	-	-	(2)	(290)	(100.0%)	(100.0%)
UA	AVL-EWR	AVL	7	350	0	0	7	350	7	350	-	-	0	0	0.0%	0.0%
UA	AVL-IAD	AVL	21	1,050	13	650	14	700	8	400	61.5%	61.5%	7	350	50.0%	50.0%
UA	AVL-ORD	AVL	28	1,400	14	700	28	1,400	14	700	100.0%	100.0%	0	0	0.0%	0.0%
UA	EWR-AVL	EWR	7	350	0	0	7	350	7	350	-	-	0	0	0.0%	0.0%
UA	IAD-AVL	IAD	21	1,050	13	650	14	700	8	400	61.5%	61.5%	7	350	50.0%	50.0%
UA	ORD-AVL	ORD	28	1,400	14	700	28	1,400	14	700	100.0%	100.0%	0	0	0.0%	0.0%
Total			446	38,698	256	23,804	438	40,580	190	14,894	74.2%	62.6%	8	(1,882)	1.8%	(4.6%)



---

## MEMORANDUM

TO: Members of the Airport Authority  
FROM: Janet Burnette, Director of Finance & Accounting  
DATE: July 9, 2021

### ITEM DESCRIPTION – Information Section Item B

Greater Asheville Regional Airport – Explanation of Extraordinary Variances  
Month of May 2021

### SUMMARY

Operating Revenues for the month of May were \$1,332,640, 41.4% over budget. Operating Expenses for the month were \$714,835, 24.3% under budget. As a result, Net Operating Revenues before Depreciation were \$617,805. Net Non-Operating Revenues were \$1,094,349, 259.8% over budget, which includes CARES Act funding of \$572,312.

Year-to-date Operating Revenues were \$9,573,572, 7.6% under budget. Year-to-date Operating Expenses were \$7,584,194, 29.7% under budget. Year-to-date Net Operating Revenues before Depreciation were \$1,989,379. Net Non-Operating Revenues for the year were \$13,633,884, 307.5% over budget.

### REVENUES

Significant variations to budget for May were:

Landing Fees	\$44,609	63.30%	Landings over budget
Term rentals – airlines	\$44,891	27.59%	Enplanements over budget
Auto parking	\$99,482	33.92%	Enplanements over budget
Rental car-car rentals	\$167,574	108.79%	Enplanements over budget & increased rates
Rental car – facility rent	\$28,125	51.02%	Enplanements over budget

Information Section – Item B





## **EXPENSES**

Significant variations to budget for May were:

Other contractual services	(\$42,381)	(39.53%)	Parking contract reduced
Utilities	(\$12,336)	(27.16%)	Low utility usage
Operating supplies	(\$16,036)	(44.72%)	Low supply costs
Promotional activities	(\$20,697)	(91.05%)	Minimal promotional activities

## **STATEMENT OF NET ASSETS**

Significant variations to prior month were:

Cash and Cash Equivalents – Cash and Cash Equivalents decreased by \$794K mostly due to the expenditures for airfield redevelopment, terminal design and south apron construction projects.

Construction in Progress – Construction in Progress increased by \$3,126K mostly due to the airfield redevelopment, terminal design and south apron construction projects.

Property and Equipment, Net – Property and Equipment, Net decreased by \$405K mostly due to depreciation.

**ASHEVILLE REGIONAL AIRPORT  
INVESTMENT AND INTEREST INCOME SUMMARY  
As of May 31, 2021**

<b><u>Institution:</u></b>	<b><u>Interest Rate</u></b>	<b><u>Investment Amount</u></b>	<b><u>Monthly Interest</u></b>
Bank of America - Operating Account	0.80%	\$ 8,351,823	1,620
NC Capital Management Trust - Cash Portfolio		484,078	4
NC Capital Management Trust - Term Portfolio		0	0
Petty Cash		200	
 <b><u>Restricted Cash:</u></b>			
BNY Mellon		1,368,250	
Bank of America - PFC Revenue Account	0.80%	9,939,730	1,683
NC Capital Management Trust - Term Port - PFC		0	0
 <b>Total</b>		 <b><u>\$ 20,144,081</u></b>	 <b><u>\$ 3,307</u></b>

**Investment Diversification:**

Banks	98%
NC Capital Management Trust	2%
Commercial Paper	0%
Federal Agencies	0%
US Treasuries	0%
	<u>100%</u>

**ASHEVILLE REGIONAL AIRPORT  
STATEMENT OF CHANGES IN FINANCIAL POSITION  
For the Month Ended May 31, 2021**

	<b>Current Month</b>	<b>Prior Period</b>
<b>Cash and Investments Beginning of Period</b>	<b>\$ 20,938,094</b>	<b>\$ 20,058,479</b>
Net Income/(Loss) Before Capital Contributions	<b>1,272,723</b>	<b>1,335,209</b>
Depreciation	<b>439,431</b>	<b>439,431</b>
Decrease/(Increase) in Receivables	<b>(576,309)</b>	<b>(21,913)</b>
Increase/(Decrease) in Payables	<b>60,803</b>	<b>25,843</b>
Decrease/(Increase) in Prepaid Expenses	<b>-</b>	<b>-</b>
Decrease/(Increase) in Fixed Assets	<b>(3,160,287)</b>	<b>(1,728,068)</b>
Principal Payments of Bond Maturities	<b>-</b>	<b>-</b>
Capital Contributions	<b>1,169,626</b>	<b>821,276</b>
Fund Balance Adjustment - Forfeiture funds	<b>-</b>	<b>7,837</b>
<b>Increase(Decrease) in Cash</b>	<b>(794,013)</b>	<b>879,615</b>
<b>Cash and Investments End of Period</b>	<b>\$ 20,144,081</b>	<b>\$ 20,938,094</b>

**ASHEVILLE REGIONAL AIRPORT  
STATEMENT OF FINANCIAL POSITION  
As of May 31, 2021**

	<b>Current Month</b>	<b>Last Month</b>
<b><u>ASSETS</u></b>		
<b>Current Assets:</b>		
<b>Unrestricted Net Assets:</b>		
Cash and Cash Equivalents	\$8,836,101	\$10,063,387
Investments	0	0
Accounts Receivable	948,996	758,831
Passenger Facility Charges Receivable	650,000	550,000
Refundable Sales Tax Receivable	145,326	133,420
Grants Receivable	1,947,237	1,672,999
Prepaid Expenses	1,581,142	1,581,142
Total Unrestricted Assets	14,108,802	14,759,779
<b>Restricted Assets:</b>		
Cash and Cash Equivalents	11,307,980	10,874,707
Total Restricted Assets	11,307,980	10,874,707
Total Current Assets	25,416,782	25,634,486
<b>Noncurrent Assets:</b>		
Construction in Progress	131,290,424	128,164,012
Net Pension Asset - LGERS	(1,239,231)	(1,239,231)
Benefit Payment - OPEB	78,015	78,015
Contributions in Current Year	799,995	799,995
Property and Equipment - Net	64,508,011	64,913,567
Total Noncurrent Assets	195,437,214	192,716,358
	\$220,853,996	\$218,350,844
<b><u>LIABILITIES AND NET ASSETS</u></b>		
<b>Current Liabilities:</b>		
<b>Payable from Unrestricted Assets:</b>		
Accounts Payable & Accrued Liabilities	(\$61,991)	(\$56,375)
Customer Deposits	14,953	12,785
Unearned Revenue	158,650	126,966
Unearned Revenue - Constr	0	0
Construction Contracts Payable	0	0
Construction Contract Retainages	1,520,209	1,520,209
Revenue Bond Payable - Current	1,315,000	1,315,000
Interest Payable	162,832	130,265
Total Payable from Unrestricted Assets	3,109,653	3,048,850
Total Current Liabilities	3,109,653	3,048,850
<b>Noncurrent Liabilities:</b>		
Pension Deferrals - OPEB	287,535	287,535
Other Postemployment Benefits	1,198,974	1,198,974
Compensated Absences	461,562	461,562
Net Pension Obligation-LEO Special Separation Allowance	439,521	439,521
Revenue Bond Payable - Noncurrent	14,990,000	14,990,000
Total Noncurrent Liabilities	17,377,592	17,377,592
Total Liabilities	20,487,245	20,426,442
<b>Net Assets:</b>		
Invested in Capital Assets	179,493,435	176,772,579
Restricted	11,307,980	10,874,707
Unrestricted	9,565,336	10,277,116
Total Net Assets	200,366,751	197,924,402
	\$220,853,996	\$218,350,844



# Income Statement

Through 05/31/21  
Summary Listing

Classification	MTD Actual Amount	YTD Actual Amount	YTD Budget Amount	YTD Variance	Annual Budget Amount	Budget Less YTD Actual
Fund Category <b>Governmental Funds</b>						
Fund Type <b>General Fund</b>						
Fund <b>10 - General Fund</b>						
<i>Operating revenues</i>						
Terminal space rentals - non airline	21,889.18	239,243.85	239,307.75	(63.90)	261,063.00	21,819.15
Terminal space rentals - airline	207,611.84	1,488,589.80	1,789,929.17	(301,339.37)	1,952,650.00	464,060.20
Landing fees	115,080.83	911,130.19	775,186.50	135,943.69	845,658.00	(65,472.19)
Concessions	47,523.22	375,263.60	474,534.50	(99,270.90)	517,674.00	142,410.40
Auto parking	392,737.88	2,545,943.68	3,225,809.58	(679,865.90)	3,519,065.00	973,121.32
Rental car - car rentals	321,614.89	1,989,461.97	1,694,452.83	295,009.14	1,848,494.00	(140,967.97)
Rental car - facility rent	83,254.92	551,298.75	606,428.17	(55,129.42)	661,558.00	110,259.25
Commerce ground transportation	13,203.20	134,831.52	201,273.42	(66,441.90)	219,571.00	84,739.48
FBOs	92,849.28	909,225.25	957,914.83	(48,689.58)	1,044,998.00	135,772.75
Building leases	9,965.59	109,559.05	109,392.25	166.80	119,337.00	9,777.95
Land leases	9,454.37	100,173.99	66,719.58	33,454.41	72,785.00	(27,388.99)
Other leases and fees	17,455.08	218,850.81	223,483.33	(4,632.52)	243,800.00	24,949.19
<i>Operating revenues Totals</i>	\$1,332,640.28	\$9,573,572.46	\$10,364,431.92	(\$790,859.46)	\$11,306,653.00	\$1,733,080.54
<i>Non-operating revenue and expense</i>						
Customer facility charges	161,857.00	1,327,185.75	1,283,333.33	43,852.42	1,400,000.00	72,814.25
Passenger facility charges	389,439.32	1,948,742.84	1,970,833.33	(22,090.49)	2,150,000.00	201,257.16
Cares Act grant	572,311.93	10,588,367.81	.00	10,588,367.81	.00	(10,588,367.81)
Interest revenue	3,307.06	28,655.48	91,666.67	(63,011.19)	100,000.00	71,344.52
Interest expense	(32,566.49)	(358,231.39)	.00	(358,231.39)	.00	358,231.39
Reimbursable cost expenses	.00	4,645.97	.00	4,645.97	.00	(4,645.97)
Gain or loss on disposal of assets	.00	90,000.00	.00	90,000.00	.00	(90,000.00)
P-card rebate	.00	4,517.13	.00	4,517.13	.00	(4,517.13)
<i>Non-operating revenue and expense Totals</i>	\$1,094,348.82	\$13,633,883.59	\$3,345,833.33	\$10,288,050.26	\$3,650,000.00	(\$9,983,883.59)
Capital contributions	1,169,625.53	20,483,982.82	.00	20,483,982.82	.00	(20,483,982.82)
<i>Operating expenses</i>						



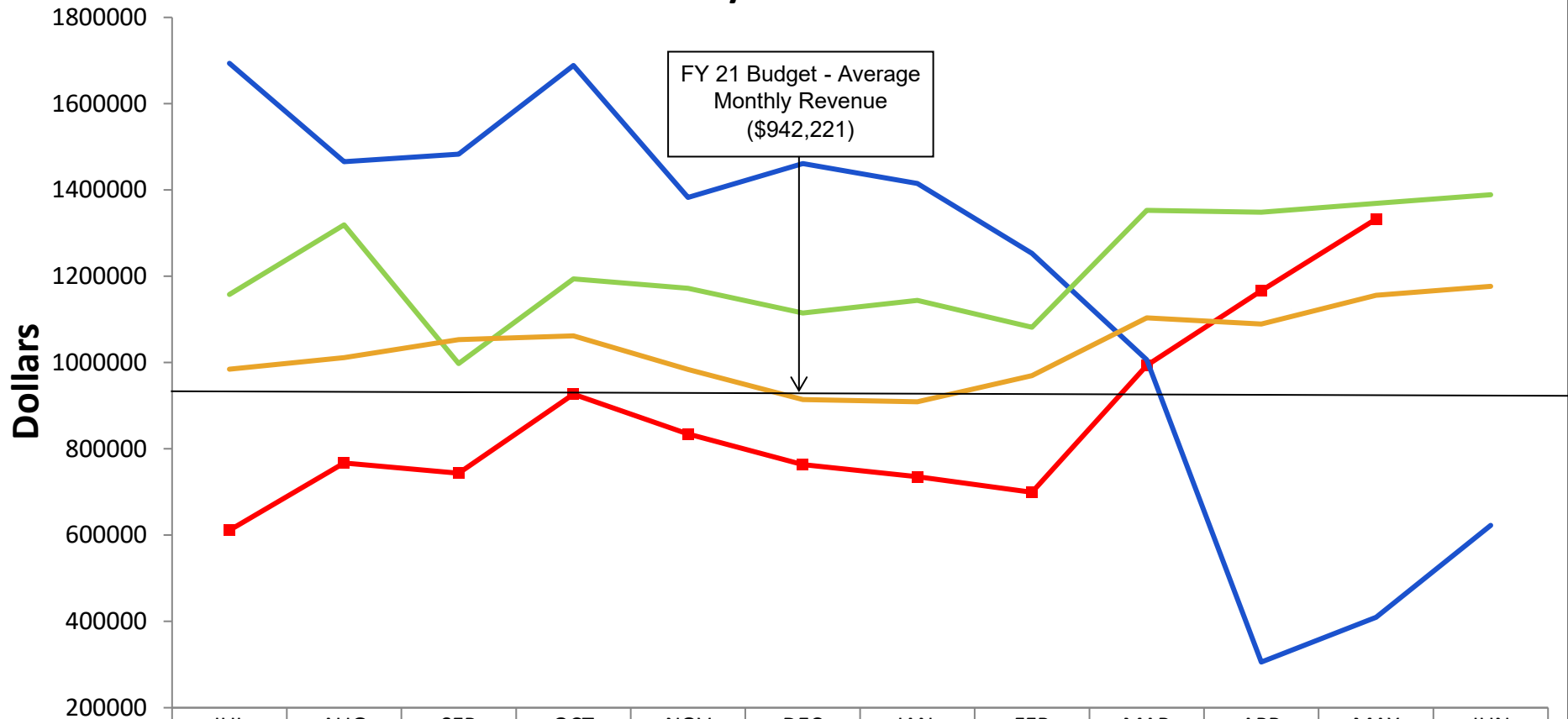
# Income Statement

Through 05/31/21

Summary Listing

Classification	MTD Actual Amount	YTD Actual Amount	YTD Budget Amount	YTD Variance	Annual Budget Amount	Budget Less YTD Actual
Personnel services	467,012.64	5,140,803.67	6,300,701.00	(1,159,897.33)	6,873,492.00	1,732,688.33
Professional services	45,683.01	353,190.55	669,395.83	(316,205.28)	730,250.00	377,059.45
Other contractual services	64,833.64	633,359.16	1,179,360.42	(546,001.26)	1,286,575.00	653,215.84
Travel and training	3,836.03	23,037.30	109,560.00	(86,522.70)	119,520.00	96,482.70
Communiations	3,318.17	47,586.47	52,745.00	(5,158.53)	57,540.00	9,953.53
Utility services	33,090.69	302,952.07	499,690.58	(196,738.51)	545,117.00	242,164.93
Rentals and leases	1,275.81	14,489.22	13,988.33	500.89	15,260.00	770.78
Insurance	.00	392,677.74	461,169.00	(68,491.26)	466,169.00	73,491.26
Advertising, printing and binding	303.10	2,831.18	11,760.83	(8,929.65)	12,830.00	9,998.82
Promotional activities	2,033.81	62,109.08	250,043.75	(187,934.67)	272,775.00	210,665.92
Other current charges and obligations	4,762.60	39,795.95	62,425.00	(22,629.05)	68,100.00	28,304.05
Operating supplies	19,818.84	168,374.64	394,398.58	(226,023.94)	430,253.00	261,878.36
Publications, subscriptions, memberships, etc.	942.72	62,965.03	72,882.33	(9,917.30)	79,508.00	16,542.97
Repairs and maintenance	18,714.90	120,563.25	215,991.42	(95,428.17)	235,627.00	115,063.75
Small equipment	3,845.37	93,009.87	87,083.33	5,926.54	95,000.00	1,990.13
Contingency	.00	.00	91,666.67	(91,666.67)	100,000.00	100,000.00
Emergency repairs	.00	9,956.79	45,833.33	(35,876.54)	50,000.00	40,043.21
Business development	45,364.06	116,492.06	275,000.00	(158,507.94)	300,000.00	183,507.94
<i>Operating expenses Totals</i>	<i>\$714,835.39</i>	<i>\$7,584,194.03</i>	<i>\$10,793,695.42</i>	<i>(\$3,209,501.39)</i>	<i>\$11,738,016.00</i>	<i>\$4,153,821.97</i>
<i>Depreciation</i>						
Depreciation	439,431.00	4,833,741.00	.00	4,833,741.00	.00	(4,833,741.00)
<i>Depreciation Totals</i>	<i>\$439,431.00</i>	<i>\$4,833,741.00</i>	<i>\$0.00</i>	<i>\$4,833,741.00</i>	<i>\$0.00</i>	<i>(\$4,833,741.00)</i>
Grand Totals						
REVENUE TOTALS	3,596,614.63	43,691,438.87	13,710,265.25	29,981,173.62	14,956,653.00	(28,734,785.87)
EXPENSE TOTALS	1,154,266.39	12,417,935.03	10,793,695.42	1,624,239.61	11,738,016.00	(679,919.03)
Grand Total Net Gain (Loss)	\$2,442,348.24	\$31,273,503.84	\$2,916,569.83	\$28,356,934.01	\$3,218,637.00	\$28,054,866.84

## ASHEVILLE REGIONAL AIRPORT Annual Operating Revenue by Month May 2021

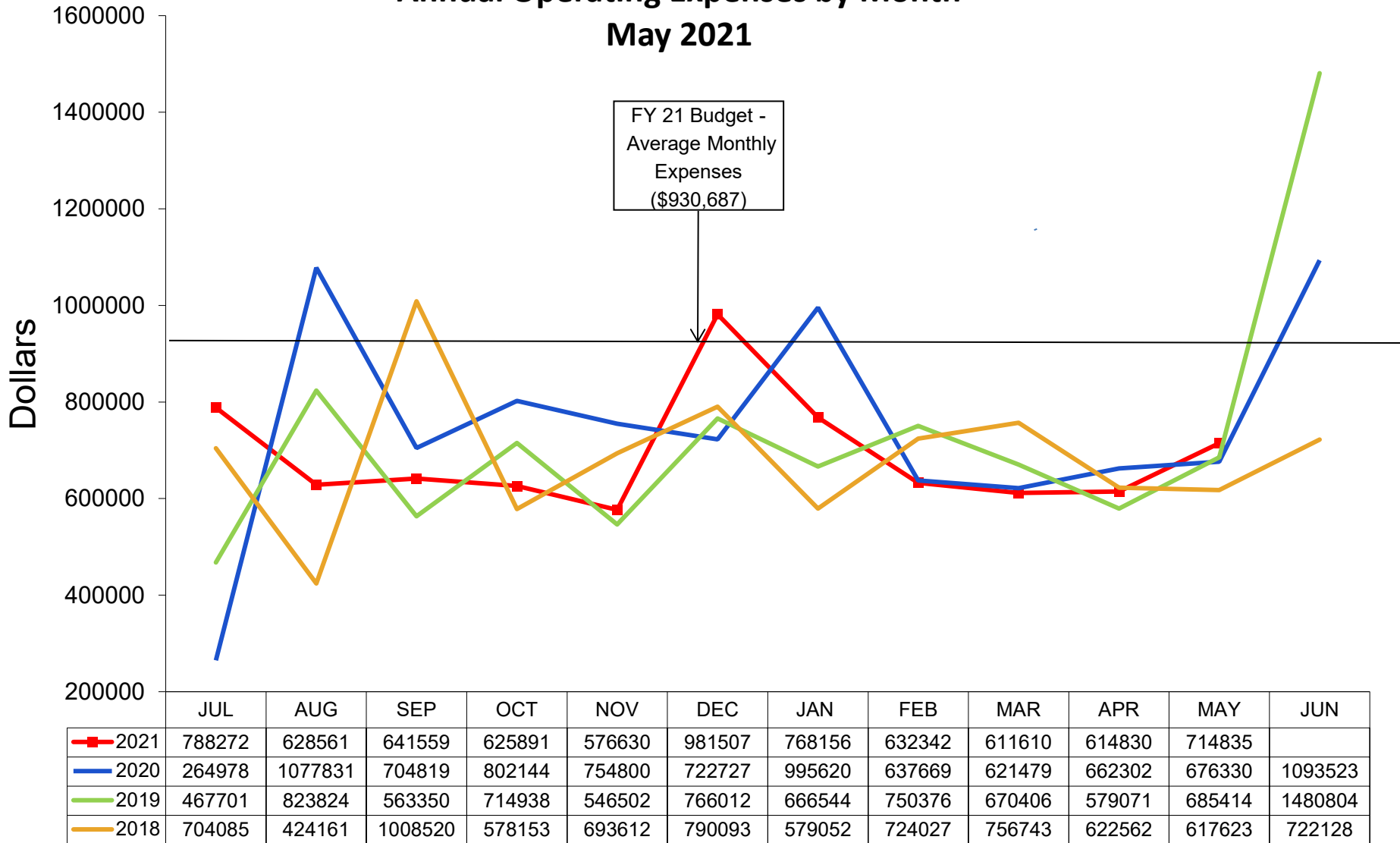


	JUL	AUG	SEP	OCT	NOV	DEC	JAN	FEB	MAR	APR	MAY	JUN
2021	611290	767485	743365	926512	834587	763375	735131	699104	993500	1166582	1332640	
2020	1693639	1465826	1482983	1688471	1382894	1461166	1414955	1253245	1006396	305847	409453	622404
2019	1157880	1319448	997702	1193707	1171956	1114742	1144401	1081933	1352795	1348310	1369108	1388974
2018	984749	1011431	1052878	1062064	984291	914297	909078	969671	1103476	1089449	1155693	1176670

# ASHEVILLE REGIONAL AIRPORT

## Annual Operating Expenses by Month

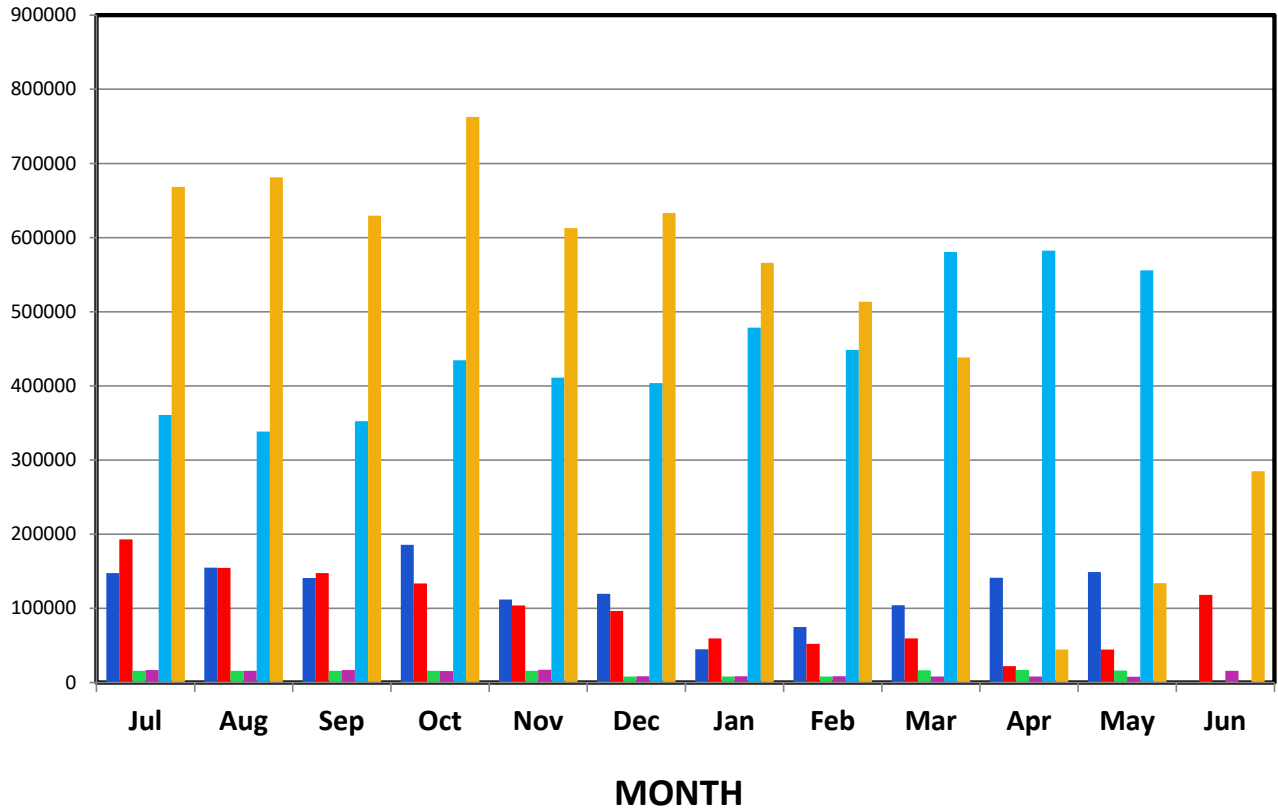
### May 2021





**ASHEVILLE REGIONAL AIRPORT  
FUEL SALES - GALLONS  
May 2021**

**G  
A  
L  
L  
O  
N  
S**

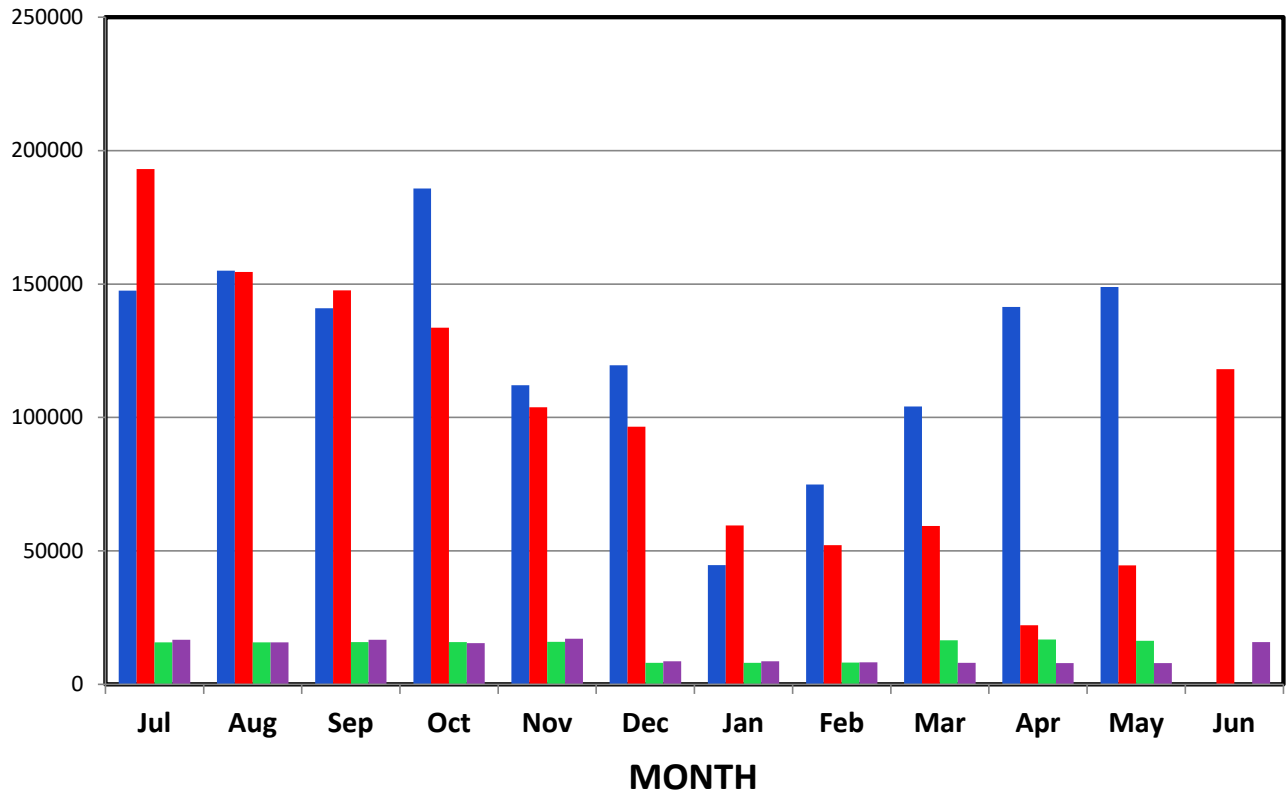


■ Jet A - FY21  
■ Jet A - FY20  
■ 100LL - FY21  
■ 100LL - FY20  
■ Airline - FY21  
■ Airline - FY20

Jet A - 112,040 Gallons  
 100LL - 15,909 Gallons  
 Airline - 411,308 Gallons

**ASHEVILLE REGIONAL AIRPORT  
GENERAL AVIATION FUEL SALES - GALLONS  
May 2021**

**G  
A  
L  
L  
O  
N  
S**



Jet A - 112,040 Gallons  
100LL - 15,909 Gallons

Greater Asheville Regional Airport Authority  
Project Report - July 2021

**Design Phase**

Project Number	Project Name	Project Description	Professional Services Consultant	Professional Services Contract	General Contractor	Original Construction Contract	Change Orders (thru 07/01/2021)	Percent of Original Contract	Board Approved Project Cost	Percent Complete	Expensed to Date (thru 07/01/2021)	Start Date	End Date	Current Project Status (as of 07/01/2021)
1	Airfield Re-Development Project	Budget for the complete project				\$64,100,000.00	\$55,900,000.00		\$120,000,000	56.6%	\$68,993,727			All Engineer, completed construction contracts and expenses will be inclusive of budget.
1A	Airfield Re-Development Project	Phase III and IV - Design Services and Project Management. Vol 2	RS&H	\$1,460,329.00	N/A	N/A	\$0.00	0.00%	<i>(Overall total included in above number)</i>	96.0%	\$1,402,243	Aug-19	Jun-21	Phase IV Project Management continues.
1B	Airfield Re-Development Project	Phase III and IV - Design Services and Project Management. Vol 3	RS&H	\$1,487,205.00	N/A	N/A	\$0.00	0.00%	<i>(Overall total included in above number)</i>	80%	\$1,190,695	Aug-19	Jun-21	Phase IV Project Management continues.
1C	Airfield Re-Development Project	New Runway Design Vol3	AVCON	\$99,271.00	N/A	N/A	\$0.00	0.00%	<i>(Overall total included in above number)</i>	75.0%	\$79,417	Aug-19	Jun-21	Phase IV Project Management continues.
1D	Airfield Re-Development Project	Miscellaneous and Administrative Expenses			N/A	N/A	\$0.00	0.0%	<i>(Overall total included in above number)</i>	0.0%	\$4,042,174	Jan-13	Jun-21	Miscellaneous Administrative Expenses, Reimbursable Agreement and Land Acquisition
2	Apron Expansion South	Terminal apron to be expanded and added for aircraft use.	Parrish and Partners	\$821,196.00	N/A	N/A	\$915,061.00	111.4%	\$1,736,257	76.7%	\$1,364,642	Nov-18	Jun-21	Project Management in process.
3	Terminal Building Renovations	Phase 2 - Terminal Building Modernization Design	Gresham Smith	\$12,608,794.00	N/A	N/A	\$0.00	0.0%	\$12,608,794	37.1%	\$5,179,707	Nov-19	Mar-22	Design Development continues to progress.
4	Terminal Building Renovations	Pre-Construction CMR	Hensel Phelps	\$1,088,270.00	N/A	N/A	\$0.00	0.0%	\$1,088,270	29.8%	\$395,536	Dec-20	Mar-22	CMR Pre-Construction phase services.
5	Air Traffic Control Tower	Design new facility	Pond Company	\$4,157,923.00	N/A	N/A	\$0.00	0.0%	\$4,157,923	0.0%	\$0	Mar-21	Mar-22	Design is progressing.
6	Parking Lot D Restart	Continue design of parking lot across highway 280.	AVCON	\$25,000.00	N/A	N/A	\$0.00	0.0%	\$25,000	0.0%	\$0	Jun-21	Oct-21	Complete design and permitting of Parking Lot D across highway 280. NTP issued June 2021.
7	South GA Apron Rehabilitation	Design apron rehabilitation	Parrish and Partners	\$565,432.00	N/A	N/A	\$0.00	0.0%	\$565,432	0.0%	\$0	Jun-21	Apr-22	Design and provide RPR services during construction. NTP issued June 2021.

**Construction Phase**

Project Number	Project Name	Project Description	Professional Services Consultant	Professional Services Contract	General Contractor	Original Construction Contract	Change Orders (thru 07/01/2021)	Percent of Original Contract	Board Approved Project Cost	Percent Complete	Expensed to Date (thru 07/01/2021)	Start Date	End Date	Current Project Status (as of 07/01/2021)	
1	Permanent Runway 17-35 Construction, NAVAIDS and Taxiway Conversion	Construct new runway and convert temporary runway to a taxiway	RS&H and AVCON Inc.	Amount Included in Phase 3 Design Fees	Travelers	\$22,222,792.84	\$0.00	0.0%	\$22,222,792.84	78.8%	\$18,454,349	Apr-20	Jul-21	Temporary runway conversion and erosion control work continues.	
2	Apron Expansion South	Terminal apron to be expanded and added for aircraft use.	Parrish and Partners	Amount in Design Fees	Zachary Construction	\$9,087,857	\$285,840	3.15%	\$9,542,250	49.3%	\$4,926,275	Sep-19	Sep-21	Upper retain wall near completion, earth fill and drain work continue. Parking lot work in progress.	
3	Parking Lot D Restart	Construct parking lot across highway 280	AVCON Inc	Amount in Design Fees	Chatham Civil Construction	\$297,567	\$0	0.00%	\$489,328	0.0%	\$0	Aug-21	Oct-21	Construction pending permits issuance.	
									<b>*(bal of approved contract)</b>						