



MAY 2009

BOARD INFORMATION PACKAGE



MEMORANDUM

TO: Members of the Airport Authority

FROM: Lew S. Bleiweis, A.A.E.

DATE: May, 2009

Informational Reports:

- A. March, 2009 Traffic Report ([document](#))
- B. March, 2009 Monthly Financial Report ([document](#))
- C. May, 2009 Marketing and Public Relations Report ([document](#))
- D. May, 2009 Development/Project Status Report ([document](#))
- E. Airport Facilities Review for First Quarter 2009 ([document](#))



MEMORANDUM

TO: Members of the Airport Authority

FROM: Lew S. Bleiweis, Deputy Airport Director

DATE: May, 2009

ITEM DESCRIPTION – Information Section Item A

March, 2009 Traffic Report – Asheville Regional Airport

SUMMARY

March 2009 overall passenger traffic numbers were up 8.2%. Passenger traffic numbers reflect a 7.5% increase in passenger enplanements from March 2008.

AIRLINE PERFORMANCE

Delta Airlines: Delta's March 2009 enplanements increased by 20% compared to March 2008. There were sixteen (16) flight cancellations for the month.

Continental Airlines: Continental's March 2009 passenger enplanements decreased by 5.4% compared to March 2008. There were three (3) flight cancellations for the month.

Northwest Airlines: Year over Year passenger enplanements for Northwest in March 2009 were down 17.7%. There were five (5) flight cancellations for the month.

US Airways: US Airways' March 2009 passenger enplanements represent a 4.7% increase. There were thirteen (13) flight cancellations for the month.

Monthly Traffic Report

Asheville Regional Airport

March 2009



| Category | Mar 2009 | Mar 2008 | Percentage Change | *CYTD-2009 | *CYTD-2008 | Percentage Change | *MOV12-2009 | *MOV12-2008 | Percentage Change |
|----------------------------|----------------|----------------|-------------------|----------------|----------------|-------------------|------------------|------------------|-------------------|
| Passenger Traffic | | | | | | | | | |
| Enplaned | 21,644 | 20,128 | 7.5% | 57,973 | 55,201 | 5.0% | 282,251 | 289,911 | -2.6% |
| Deplaned | <u>21,571</u> | <u>19,814</u> | 8.9% | <u>56,746</u> | <u>53,673</u> | 5.7% | <u>281,521</u> | <u>282,364</u> | -0.3% |
| Total | 43,215 | 39,942 | 8.2% | 114,719 | 108,874 | 5.4% | 563,772 | 572,275 | -1.5% |
| Aircraft Operations | | | | | | | | | |
| Airlines | 21 | 66 | -68.2% | 72 | 315 | -77.1% | 1,122 | 1,643 | -31.7% |
| Commuter /Air Taxi | <u>1,376</u> | <u>1,383</u> | -0.5% | 3,691 | 3,765 | -2.0% | 18,888 | 19,101 | -1.1% |
| Subtotal | <u>1,397</u> | <u>1,449</u> | -3.6% | <u>3,763</u> | <u>4,080</u> | -7.8% | <u>20,010</u> | <u>20,744</u> | -3.5% |
| General Aviation | 3,269 | 4,385 | -25.5% | 8,900 | 11,393 | -21.9% | 50,826 | 58,820 | -13.6% |
| Military | <u>293</u> | <u>168</u> | 74.4% | <u>749</u> | <u>485</u> | 54.4% | <u>3,158</u> | <u>2,432</u> | 29.9% |
| Subtotal | <u>3,562</u> | <u>4,553</u> | -21.8% | <u>9,649</u> | <u>11,878</u> | -18.8% | <u>53,984</u> | <u>61,252</u> | -11.9% |
| Total | 4,959 | 6,002 | -17.4% | 13,412 | 15,958 | -16.0% | 73,994 | 81,996 | -9.8% |
| Fuel Gallons | | | | | | | | | |
| 100LL | 12,869 | 16,437 | -21.7% | 35,944 | 46,274 | -22.3% | 223,523 | 281,523 | -20.6% |
| Jet A (GA) | 52,605 | 92,333 | -43.0% | 166,983 | 230,826 | -27.7% | 1,301,972 | 1,684,609 | -22.7% |
| Subtotal | <u>65,474</u> | <u>108,770</u> | -39.8% | <u>202,927</u> | <u>277,100</u> | -26.8% | <u>1,525,495</u> | <u>1,966,132</u> | -22.4% |
| Jet A (A/L) | <u>205,887</u> | <u>211,401</u> | -2.6% | <u>571,846</u> | <u>620,381</u> | -7.8% | <u>2,839,849</u> | <u>2,812,860</u> | 1.0% |
| Total | 271,361 | 320,171 | -15.2% | 774,773 | 897,481 | -13.7% | 4,365,344 | 4,778,992 | -8.7% |

*CYTD = Calendar Year to Date and *Mov12 = Moving Twelve Months.

Friday, April 24, 2009

Airline Enplanements, Seats, and Load Factors

Asheville Regional Airport

March 2009



| | Mar 2009 | Mar 2008 | Percentage Change | *CYTD-2009 | *CYTD-2008 | Percentage Change |
|-----------------------------|----------|----------|-------------------|------------|------------|-------------------|
| Continental Airlines | | | | | | |
| Enplanements | 1,923 | 2,032 | -5.4% | 4,769 | 5,506 | -13.4% |
| Seats | 3,050 | 2,605 | 17.1% | 8,750 | 8,025 | 9.0% |
| Load Factor | 63.0% | 78.0% | -19.2% | 54.5% | 68.6% | -20.6% |
| Delta Air Lines | | | | | | |
| Enplanements | 9,654 | 8,047 | 20.0% | 23,948 | 22,077 | 8.5% |
| Seats | 14,670 | 10,855 | 35.1% | 33,500 | 30,579 | 9.6% |
| Load Factor | 65.8% | 74.1% | -11.2% | 71.5% | 72.2% | -1.0% |
| Northwest Airlines | | | | | | |
| Enplanements | 2,238 | 2,718 | -17.7% | 6,923 | 7,575 | -8.6% |
| Seats | 2,850 | 4,200 | -32.1% | 9,600 | 12,500 | -23.2% |
| Load Factor | 78.5% | 64.7% | 21.3% | 72.1% | 60.6% | 19.0% |
| US Airways | | | | | | |
| Enplanements | 7,673 | 7,331 | 4.7% | 22,091 | 20,043 | 10.2% |
| Seats | 9,980 | 9,620 | 3.7% | 28,560 | 28,700 | -0.5% |
| Load Factor | 76.9% | 76.2% | 0.9% | 77.3% | 69.8% | 10.8% |
| Totals | | | | | | |
| Enplanements | 21,488 | 20,128 | 6.8% | 57,731 | 55,201 | 4.6% |
| Seats | 30,550 | 27,280 | 12.0% | 80,410 | 79,804 | 0.8% |
| Load Factor | 70.3% | 73.8% | -4.7% | 71.8% | 69.2% | 3.8% |

Friday, April 24, 2009

*CTYD = Calendar Year to Date and *Mov12 = Moving Twelve Months.

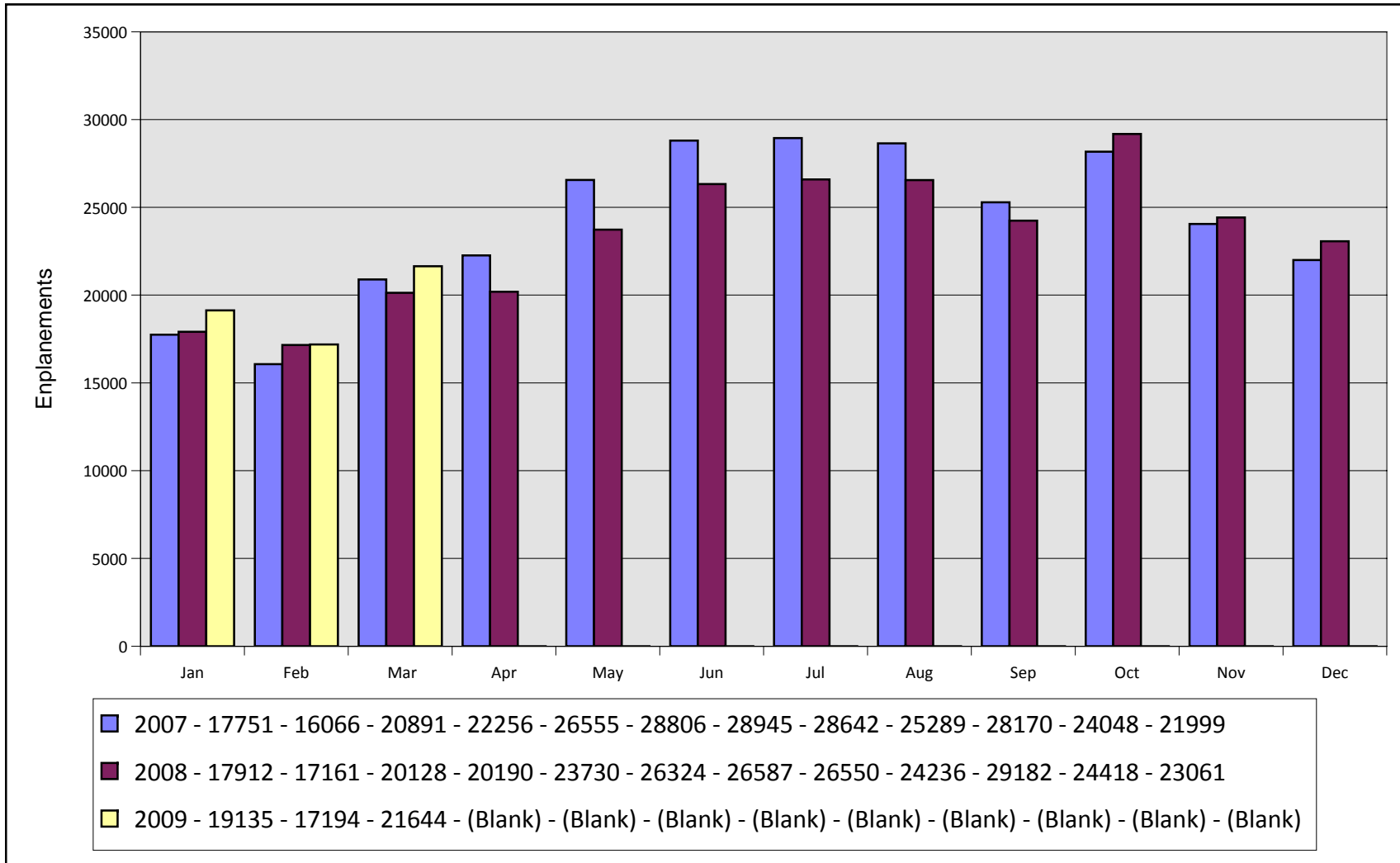
Airline Flight Completions Asheville Regional Airport March 2009



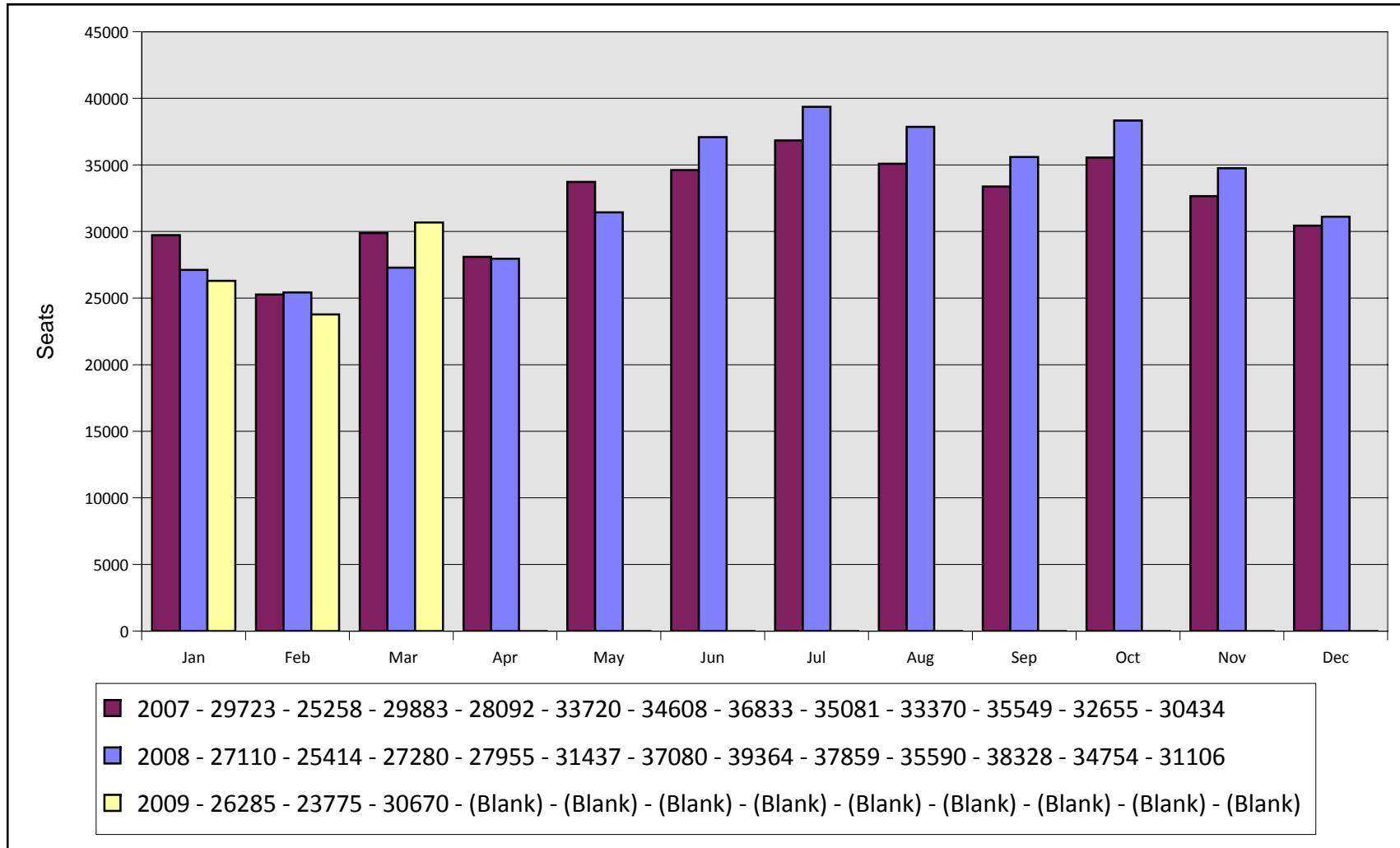
| Airline | Scheduled Flights | Field | Cancellations Due To | | | Total Cancellations | Percentage of Completed |
|----------------------|-------------------|----------|----------------------|-----------|----------|---------------------|-------------------------|
| | | | Mechanical | Weather | Other | | |
| Continental Airlines | 63 | 0 | 0 | 3 | 0 | 3 | 96.8% |
| Delta Air Lines | 309 | 0 | 6 | 9 | 1 | 16 | 94.8% |
| Northwest Airlines | 62 | 0 | 1 | 4 | 0 | 5 | 91.9% |
| Pace Airlines | 1 | 0 | 0 | 0 | 0 | 0 | 100.0% |
| Southwest Airlines | 1 | 0 | 0 | 0 | 0 | 0 | 100.0% |
| US Airways | 224 | 0 | 5 | 8 | 0 | 13 | 96.0% |
| Total | 660 | 0 | 12 | 24 | 1 | 37 | 94.4% |

Friday, April 24, 2009

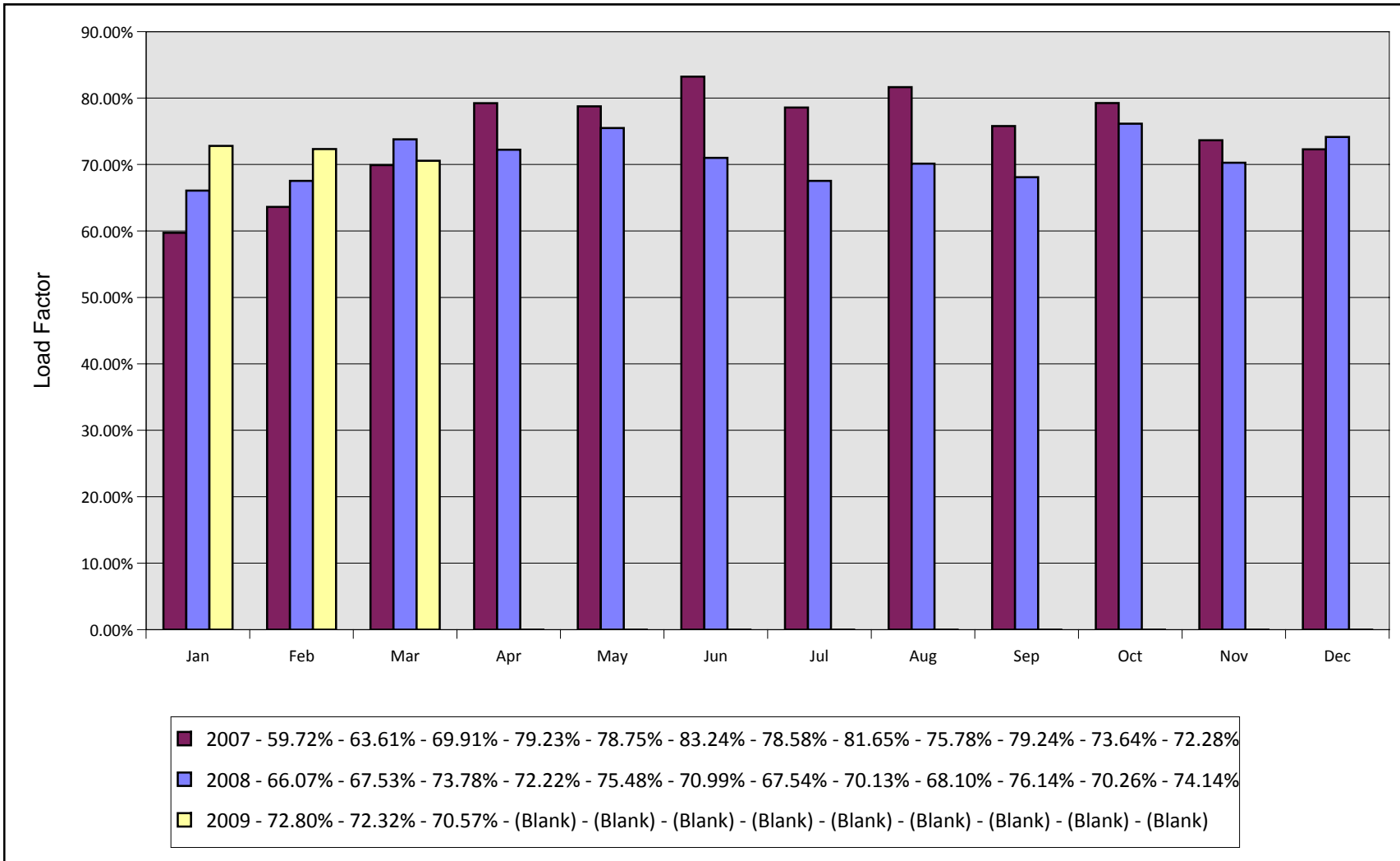
Monthly Enplanements By Year Asheville Regional Airport



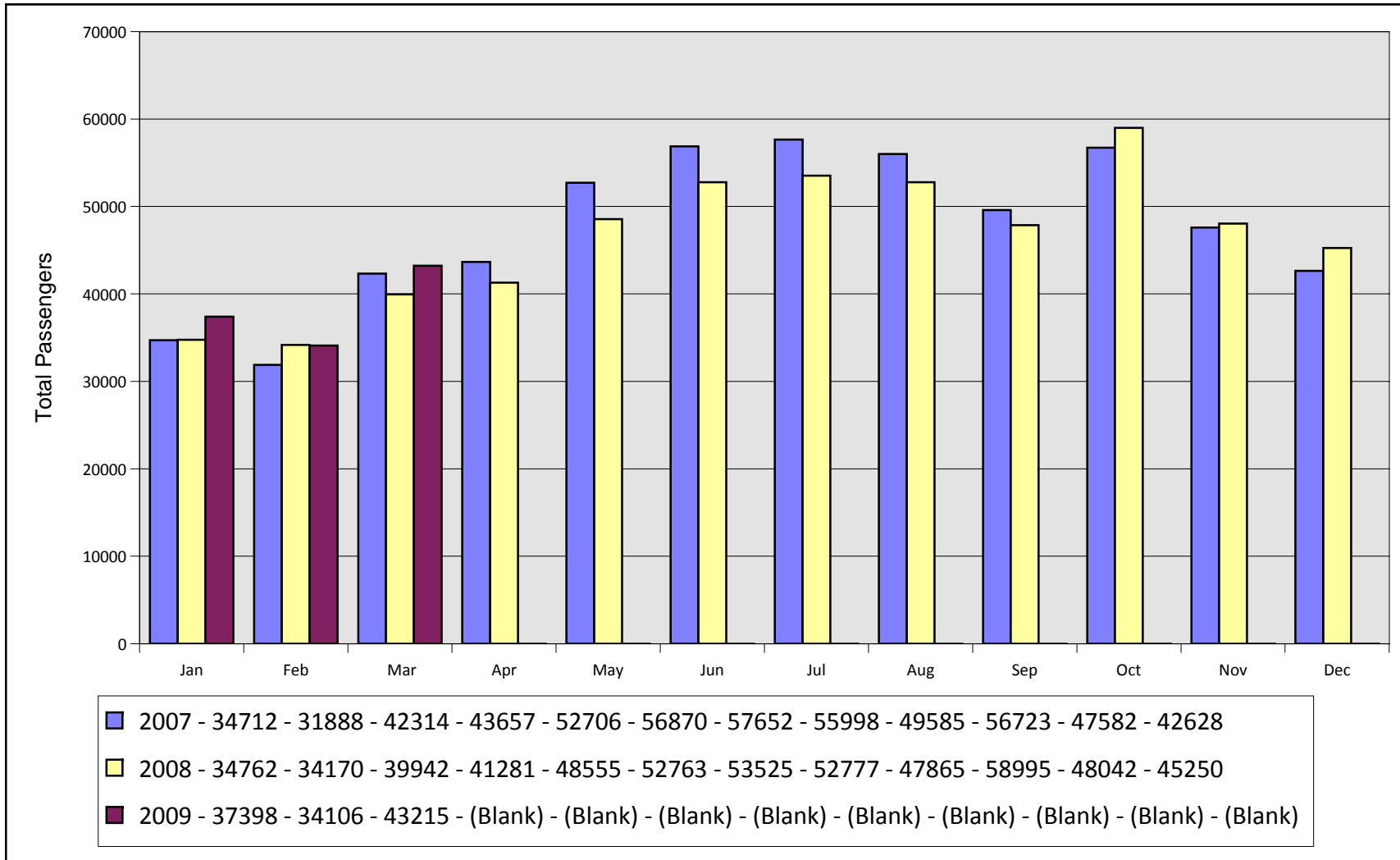
Monthly Seats By Year Asheville Regional Airport



Monthly Load Factors By Year Asheville Regional Airport

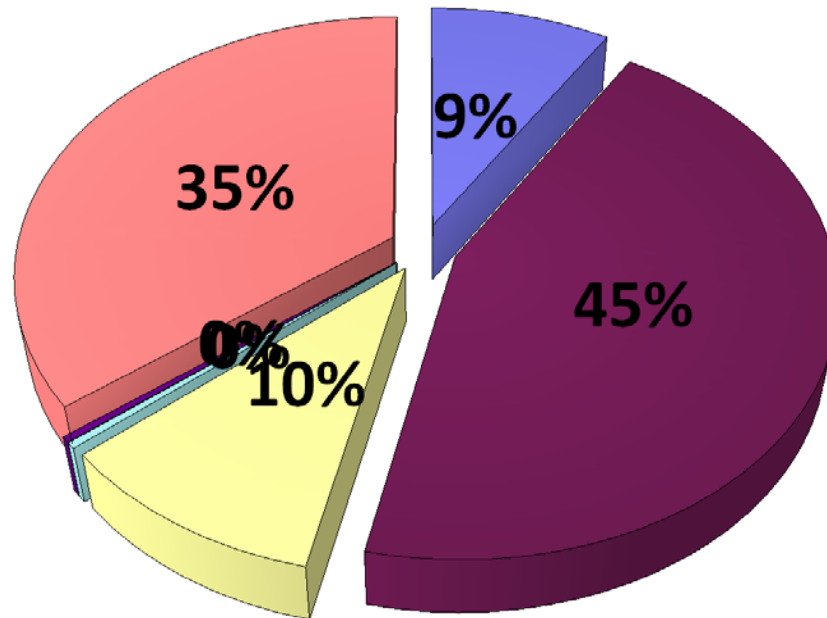


Total Monthly Passengers By Year Asheville Regional Airport

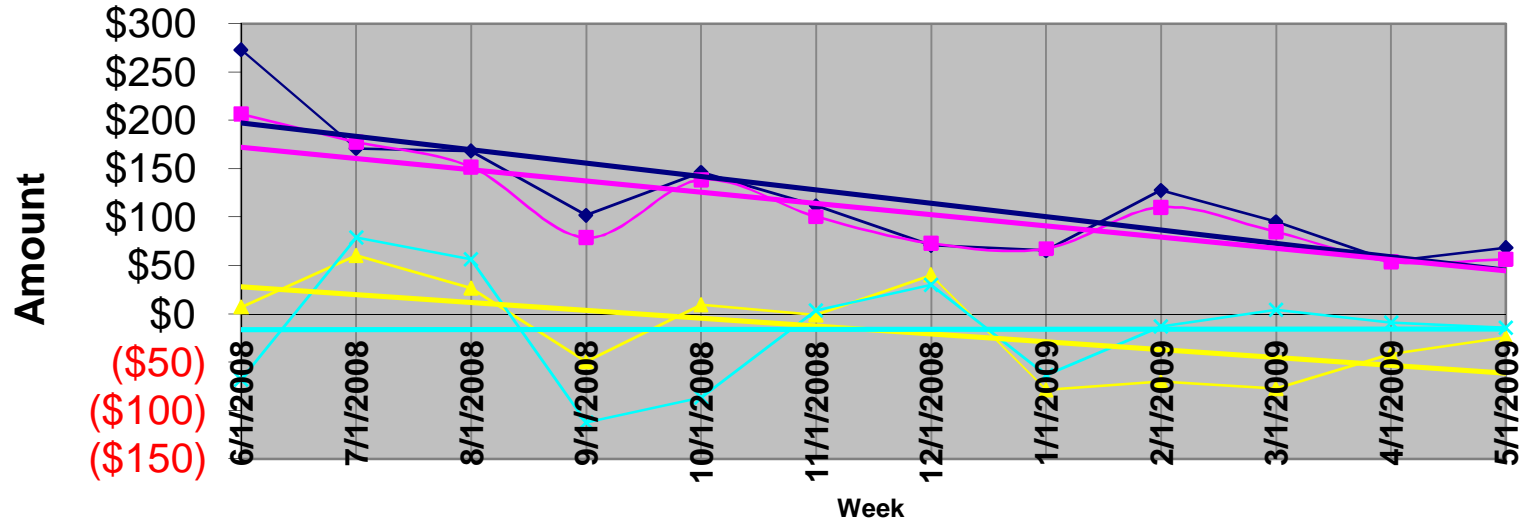


Airline Market Share Analysis (Enplanements) Asheville Regional Airport

Report Period From March 2009 Through March 2009



AVL Average Airfare Differences 21 Day Advance Purchase, 3 Day Stay



◆ ATL
 ■ CLT
 ▲ GSP
 ✕ TRI
 — Linear (ATL)
 — Linear (CLT)
 — Linear (GSP)
 — Linear (TRI)

Asheville Regional Airport
Sample airfares as of 04/30/09
21 Day Advance Purchase, 3 day Stay

| | | AVL | ATL | CLT | GSP | TRI | Difference in Fares | | | |
|-----|------------------------|-------|-------|-------|-------|-------|---------------------|-----------|-----------|------------|
| | | | | | | | ATLANTA | CHARLOTTE | GREEVILLE | TRI-CITIES |
| ABQ | Albuquerque | \$464 | \$330 | \$239 | \$443 | \$485 | \$134 | \$225 | \$21 | (\$21) |
| ATL | Atlanta | \$231 | | \$292 | \$226 | \$231 | \$231 | (\$61) | \$5 | \$0 |
| AUS | Austin | \$321 | \$319 | \$262 | \$392 | \$300 | \$2 | \$59 | (\$71) | \$21 |
| BWI | Baltimore | \$160 | \$119 | \$150 | \$312 | \$240 | \$41 | \$10 | (\$152) | (\$80) |
| BOS | Boston | \$235 | \$209 | \$178 | \$328 | \$280 | \$26 | \$57 | (\$93) | (\$45) |
| ORD | Chicago | \$235 | \$187 | \$251 | \$368 | \$240 | \$48 | (\$16) | (\$133) | (\$5) |
| CVG | Cincinnati | \$193 | \$209 | \$287 | \$194 | \$231 | (\$16) | (\$94) | (\$1) | (\$38) |
| CLE | Cleveland | \$332 | \$202 | \$297 | \$292 | \$227 | \$130 | \$35 | \$40 | \$105 |
| DFW | Dallas | \$276 | \$173 | \$254 | \$314 | \$320 | \$103 | \$22 | (\$38) | (\$44) |
| DEN | Denver | \$306 | \$239 | \$288 | \$363 | \$374 | \$67 | \$18 | (\$57) | (\$68) |
| DTW | Detroit | \$274 | \$189 | \$246 | \$249 | \$247 | \$85 | \$28 | \$25 | \$27 |
| FLL | Fort Lauderdale | \$275 | \$174 | \$197 | \$415 | \$265 | \$101 | \$78 | (\$140) | \$10 |
| RSW | Ft. Myers | \$438 | \$214 | \$283 | \$302 | \$330 | \$224 | \$155 | \$136 | \$108 |
| BDL | Hartford | \$199 | \$381 | \$189 | \$232 | \$300 | (\$182) | \$10 | (\$33) | (\$101) |
| IAH | Houston | \$233 | \$226 | \$266 | \$389 | \$315 | \$7 | (\$33) | (\$156) | (\$82) |
| IND | Indianapolis | \$241 | \$209 | \$198 | \$232 | \$299 | \$32 | \$43 | \$9 | (\$58) |
| JAX | Jacksonville | \$237 | \$144 | \$234 | \$272 | \$240 | \$93 | \$3 | (\$35) | (\$3) |
| MCI | Kansas City | \$273 | \$209 | \$184 | \$270 | \$240 | \$64 | \$89 | \$3 | \$33 |
| LAS | Las Vegas | \$455 | \$329 | \$377 | \$369 | \$430 | \$126 | \$78 | \$86 | \$25 |
| LAX | Los Angeles | \$336 | \$250 | \$298 | \$376 | \$380 | \$86 | \$38 | (\$40) | (\$44) |
| MHT | Manchester | \$239 | \$327 | \$278 | \$400 | \$287 | (\$88) | (\$39) | (\$161) | (\$48) |
| MEM | Memphis | \$346 | \$144 | \$295 | \$247 | \$393 | \$202 | \$51 | \$99 | (\$47) |
| MIA | Miami | \$312 | \$207 | \$221 | \$425 | \$333 | \$105 | \$91 | (\$113) | (\$21) |
| MKE | Milwaukee | \$277 | \$137 | \$192 | \$326 | \$436 | \$140 | \$85 | (\$49) | (\$159) |
| MSP | Minneapolis/Saint Paul | \$245 | \$164 | | \$290 | \$363 | \$81 | \$245 | (\$45) | (\$118) |
| BNA | Nashville | \$215 | \$229 | \$156 | \$387 | \$389 | (\$14) | \$59 | (\$172) | (\$174) |
| MSY | New Orleans | \$245 | \$169 | \$227 | \$292 | \$356 | \$76 | \$18 | (\$47) | (\$111) |
| LGA | New York | \$274 | \$247 | \$167 | \$247 | \$240 | \$27 | \$107 | \$27 | \$34 |
| EWR | Newark | \$234 | \$219 | \$167 | \$236 | \$240 | \$15 | \$67 | (\$2) | (\$6) |
| MCO | Orlando | \$377 | \$209 | \$205 | \$244 | \$240 | \$168 | \$172 | \$133 | \$137 |
| PHL | Philadelphia | \$195 | \$189 | \$196 | \$275 | \$280 | \$6 | (\$1) | (\$80) | (\$85) |
| PHX | Phoenix | \$296 | \$249 | \$218 | \$342 | \$340 | \$47 | \$78 | (\$46) | (\$44) |
| PIT | Pittsburgh | \$158 | \$158 | \$156 | \$309 | \$240 | \$0 | \$2 | (\$151) | (\$82) |
| PDX | Portland | \$400 | \$391 | \$328 | \$373 | \$408 | \$9 | \$72 | \$27 | (\$8) |
| PVD | Providence | \$239 | \$303 | \$293 | \$342 | \$315 | (\$64) | (\$54) | (\$103) | (\$76) |

| | | | | | | | | | | |
|-----|--------------------|-------|-------|-------|-------|-------|---------|--------|---------|--------------------------------|
| RDU | Raleigh/Durham | \$388 | \$139 | \$296 | \$257 | \$274 | \$249 | \$92 | \$131 | \$114 |
| RIC | Richmond | \$340 | \$169 | \$157 | \$290 | \$280 | \$171 | \$183 | \$50 | \$60 |
| STL | Saint Louis | \$283 | \$148 | \$181 | \$297 | \$240 | \$135 | \$102 | (\$14) | \$43 |
| SLC | Salt Lake City | \$485 | \$398 | \$276 | \$205 | \$481 | \$87 | \$209 | \$280 | \$4 |
| SAT | San Antonio | \$266 | \$204 | \$241 | \$289 | \$329 | \$62 | \$25 | (\$23) | (\$63) |
| SAN | San Diego | \$343 | \$340 | \$288 | \$386 | \$402 | \$3 | \$55 | (\$43) | (\$59) |
| SFO | San Francisco | \$316 | \$353 | \$302 | \$437 | \$377 | (\$37) | \$14 | (\$121) | (\$61) |
| SRQ | Sarasota/Bradenton | \$440 | \$209 | \$333 | \$297 | \$240 | \$231 | \$107 | \$143 | \$200 |
| SEA | Seattle | \$407 | \$369 | \$318 | \$386 | \$380 | \$38 | \$89 | \$21 | \$27 |
| SYR | Syracuse | \$194 | \$363 | \$168 | \$316 | \$200 | (\$169) | \$26 | (\$122) | (\$6) |
| TPA | Tampa | \$277 | \$209 | \$248 | \$296 | \$240 | \$68 | \$29 | (\$19) | \$37 |
| YYZ | Toronto | \$447 | \$313 | \$337 | \$348 | \$460 | \$134 | \$110 | \$99 | (\$13) |
| DCA | Washington DC | \$235 | \$179 | \$218 | \$412 | \$278 | \$56 | \$17 | (\$177) | (\$43) |
| IAD | Washington DC | \$235 | \$179 | \$272 | \$400 | \$278 | \$56 | (\$37) | (\$165) | (\$43) |
| PBI | West Palm Beach | \$389 | \$158 | \$296 | \$334 | \$240 | \$231 | \$93 | \$55 | \$149 |
| | | | | | | | \$69 | \$56 | (\$24) | (\$14) Average Fare difference |

*These sample airfares were available 04/30/09, based on a 21 day advance purchase and a 3 day stay. Other restrictions may apply. To obtain the most up-to-date pricing information for your travel needs, please contact your professional travel agent or visit the following web sites: www.continental.com; www.delta.com; www.nwa.com; www.usairways.com; www.travelocity.com; www.orbitz.com; or www.expedia.com. Airfares are subject to change without notice - and lower airfares are often not available on all dates. Please see our "special airfares" section on our web site for any last minute airfare specials. Sample airfares will be updated each Tuesday.

Blue highlighted numbers represent fare differentials in excess of \$35 for GSP, \$70 for CLT, \$100 for ATL, and \$35 for TRI.

Asheville Regional Airport
Sample airfares as of 04/30/09
0 Day Advance Purchase, 3 day Stay

| | | | | | | | <u>Difference in Fares</u> | | | |
|-----|------------------------|------------------|----------------|------------------|-------------------|-------------------|----------------------------|------------------|-------------------|-------------------|
| | | <u>ASHEVILLE</u> | <u>ATLANTA</u> | <u>CHARLOTTE</u> | <u>GREENVILLE</u> | <u>TRI-CITIES</u> | <u>ATLANTA</u> | <u>CHARLOTTE</u> | <u>GREENVILLE</u> | <u>TRI-CITIES</u> |
| ABQ | Albuquerque | \$581 | \$564 | \$285 | \$852 | \$843 | \$17 | \$296 | (\$271) | (\$262) |
| ATL | Atlanta | \$359 | | \$347 | \$354 | \$389 | \$359 | \$12 | \$5 | (\$30) |
| AUS | Austin | \$454 | \$421 | \$305 | \$362 | \$493 | \$33 | \$149 | \$92 | (\$39) |
| BWI | Baltimore | \$315 | \$368 | \$247 | \$753 | \$241 | (\$53) | \$68 | (\$438) | \$74 |
| BOS | Boston | \$275 | \$399 | \$228 | \$384 | \$317 | (\$124) | \$47 | (\$109) | (\$42) |
| ORD | Chicago | \$275 | \$288 | \$342 | \$598 | \$317 | (\$13) | (\$67) | (\$323) | (\$42) |
| CVG | Cincinnati | \$365 | \$318 | \$534 | \$602 | \$489 | \$47 | (\$169) | (\$237) | (\$124) |
| CLE | Cleveland | \$662 | \$358 | \$557 | \$412 | \$518 | \$304 | \$105 | \$250 | \$144 |
| DFW | Dallas | \$632 | \$393 | \$577 | \$642 | \$441 | \$239 | \$55 | (\$10) | \$191 |
| DEN | Denver | \$286 | \$279 | \$526 | \$565 | \$677 | \$7 | (\$240) | (\$279) | (\$391) |
| DTW | Detroit | \$535 | \$373 | \$498 | \$719 | \$708 | \$162 | \$37 | (\$184) | (\$173) |
| FLL | Fort Lauderdale | \$285 | \$277 | \$293 | \$738 | \$325 | \$8 | (\$8) | (\$453) | (\$40) |
| RSW | Ft. Myers | | \$447 | \$383 | \$810 | \$537 | (\$447) | (\$383) | (\$810) | (\$537) |
| BDL | Hartford | \$255 | \$612 | \$248 | \$272 | \$297 | (\$357) | \$7 | (\$17) | (\$42) |
| IAH | Houston | \$395 | \$371 | \$516 | \$549 | \$677 | \$24 | (\$121) | (\$154) | (\$282) |
| IND | Indianapolis | \$353 | \$269 | \$198 | \$440 | \$531 | \$84 | \$155 | (\$87) | (\$178) |
| JAX | Jacksonville | \$237 | \$359 | \$268 | \$741 | \$277 | (\$122) | (\$31) | (\$504) | (\$40) |
| MCI | Kansas City | \$275 | \$391 | \$187 | \$552 | \$317 | (\$116) | \$88 | (\$277) | (\$42) |
| LAS | Las Vegas | \$769 | \$711 | \$717 | \$743 | \$641 | \$58 | \$52 | \$26 | \$128 |
| LAX | Los Angeles | \$537 | \$484 | \$395 | \$727 | \$560 | \$53 | \$142 | (\$190) | (\$23) |
| MHT | Manchester | \$275 | \$500 | \$308 | \$733 | \$237 | (\$225) | (\$33) | (\$458) | \$38 |
| MEM | Memphis | \$759 | \$338 | \$603 | \$684 | \$833 | \$421 | \$156 | \$75 | (\$74) |
| MIA | Miami | \$529 | \$335 | \$482 | \$550 | \$537 | \$194 | \$47 | (\$21) | (\$8) |
| MKE | Milwaukee | \$225 | \$383 | \$192 | \$411 | \$585 | (\$158) | \$33 | (\$186) | (\$360) |
| MSP | Minneapolis/Saint Paul | \$511 | \$399 | \$602 | \$614 | \$622 | \$112 | (\$91) | (\$103) | (\$111) |
| BNA | Nashville | \$722 | \$638 | \$237 | \$709 | \$978 | \$84 | \$485 | \$13 | (\$256) |
| MSY | New Orleans | \$699 | \$599 | \$647 | \$812 | \$773 | \$100 | \$52 | (\$113) | (\$74) |
| LGA | New York | \$417 | \$473 | \$397 | \$769 | \$477 | (\$56) | \$20 | (\$352) | (\$60) |
| EWR | Newark | \$357 | \$472 | \$397 | \$492 | \$769 | (\$115) | (\$40) | (\$135) | (\$412) |
| MCO | Orlando | \$620 | \$303 | \$221 | \$685 | \$537 | \$317 | \$399 | (\$65) | \$83 |
| PHL | Philadelphia | \$330 | \$479 | \$218 | \$311 | \$317 | (\$149) | \$112 | \$19 | \$13 |
| PHX | Phoenix | \$335 | \$512 | \$294 | \$853 | \$377 | (\$177) | \$41 | (\$518) | (\$42) |
| PIT | Pittsburgh | \$236 | \$373 | \$208 | \$405 | \$273 | (\$137) | \$28 | (\$169) | (\$37) |
| PDX | Portland | \$530 | \$637 | \$305 | \$647 | \$712 | (\$107) | \$225 | (\$117) | (\$182) |
| PVD | Providence | \$275 | \$517 | \$248 | \$270 | \$237 | (\$242) | \$27 | \$5 | \$38 |
| RDU | Raleigh/Durham | \$854 | \$282 | \$577 | \$614 | \$839 | \$572 | \$277 | \$240 | \$15 |
| RIC | Richmond | \$797 | \$434 | \$638 | \$644 | \$1,037 | \$363 | \$159 | \$153 | (\$240) |
| STL | Saint Louis | \$544 | \$333 | \$388 | \$626 | \$537 | \$211 | \$156 | (\$82) | \$7 |

| | | | | | | | | | | |
|-----|--------------------|---------|-------|-------|-------|---------|---------|---------|---------|--------------------------------|
| SLC | Salt Lake City | \$563 | \$479 | \$595 | \$747 | \$870 | \$84 | (\$32) | (\$184) | (\$307) |
| SAT | San Antonio | \$913 | \$574 | \$453 | \$494 | \$548 | \$339 | \$460 | \$419 | \$365 |
| SAN | San Diego | \$614 | \$598 | \$423 | \$887 | \$694 | \$16 | \$191 | (\$273) | (\$80) |
| SFO | San Francisco | \$437 | \$593 | \$335 | \$913 | \$480 | (\$156) | \$102 | (\$476) | (\$43) |
| SRQ | Sarasota/Bradenton | \$825 | \$323 | \$551 | \$669 | \$637 | \$502 | \$274 | \$156 | \$188 |
| SEA | Seattle | \$364 | \$542 | \$334 | \$683 | \$400 | (\$178) | \$30 | (\$319) | (\$36) |
| SYR | Syracuse | \$328 | \$584 | \$238 | \$518 | \$377 | (\$256) | \$90 | (\$190) | (\$49) |
| TPA | Tampa | \$317 | \$347 | \$298 | \$695 | \$357 | (\$30) | \$19 | (\$378) | (\$40) |
| YYZ | Toronto | \$1,261 | \$947 | \$711 | \$631 | \$1,284 | \$314 | \$550 | \$630 | (\$23) |
| DCA | Washington DC | \$295 | \$417 | \$495 | \$455 | \$455 | (\$122) | (\$200) | (\$160) | (\$160) |
| IAD | Washington DC | \$295 | \$423 | \$495 | \$434 | \$455 | (\$128) | (\$200) | (\$139) | (\$160) |
| PBI | West Palm Beach | \$657 | \$223 | \$504 | \$674 | \$537 | \$434 | \$153 | (\$17) | \$120 |
| | | | | | | | \$40 | \$74 | (\$134) | (\$73) Average Fare difference |

*These sample airfares were available 04/30/09, based on a 0 day advance purchase and a 3 day stay. Other restrictions may apply. To obtain the most up-to-date pricing information for your travel needs, please contact your professional travel agent or visit the following web sites: www.continental.com; www.delta.com; www.nwa.com; www.usairways.com; www.travelocity.com; www.orbitz.com; or www.expedia.com. Airfares are subject to change without notice - and lower airfares are often not available on all dates. Please see our "special airfares" section on our web site for any last minute airfare specials. Sample airfares will be updated each Tuesday.

Blue highlighted numbers represent fare differentials in excess of \$35 for GSP, \$70 for CLT, \$100 for ATL, and \$35 for TRI.

Schedule Compare Report for all Airlines for Passenger flights between AVL and ALL for May09 vs. May08

| AI | Ops/Week | | | | Seats/Week | | | |
|-------|----------|-------|------|---------|------------|--------|--------|---------|
| | May09 | May08 | Diff | Pct Chg | May09 | May08 | Diff | Pct Chg |
| DL | 138 | 96 | 42 | 43.75 | 6,900 | 4,990 | 1,910 | 38.28 |
| CO | 38 | 42 | -4 | -9.52 | 1,900 | 2,100 | -200 | -9.52 |
| NW | 14 | 40 | -26 | -65.00 | 700 | 2,000 | -1,300 | -65.00 |
| US | 100 | 126 | -26 | -20.63 | 4,974 | 5,820 | -846 | -14.54 |
| TOTAL | 290 | 304 | -14 | -4.61 | 14,474 | 14,910 | -436 | -2.92 |

Schedule Compare Report for all Airlines for Passenger flights between AVL and ALL for June09 vs. June08

| AI | Ops/Week | | | | Seats/Week | | | |
|-------|----------|-------|------|---------|------------|--------|--------|---------|
| | Jun09 | Jun08 | Diff | Pct Chg | Jun09 | Jun08 | Diff | Pct Chg |
| DL | 152 | 120 | 32 | 26.67 | 7,600 | 6,332 | 1,268 | 20.03 |
| FL | 4 | 0 | 4 | 100.00 | 468 | 0 | 468 | 100.00 |
| US | 98 | 126 | -28 | -22.22 | 4,900 | 5,754 | -854 | -14.84 |
| CO | 38 | 72 | -34 | -47.22 | 1,900 | 3,548 | -1,648 | -46.45 |
| NW | 14 | 56 | -42 | -75.00 | 700 | 2,800 | -2,100 | -75.00 |
| TOTAL | 306 | 374 | -68 | -18.18 | 15,568 | 18,434 | -2,866 | -15.55 |

Schedule Compare Report for all Airlines for Passenger flights between AVL and ALL for July09 vs. July08

| AI | Ops/Week | | | | Seats/Week | | | |
|-------|----------|-------|------|---------|------------|--------|--------|---------|
| | Jul09 | Jul08 | Diff | Pct Chg | Jul09 | Jul08 | Diff | Pct Chg |
| DL | 142 | 122 | 20 | 16.39 | 7,100 | 6,704 | 396 | 5.91 |
| FL | 6 | 0 | 6 | 100.00 | 702 | 0 | 702 | 100.00 |
| US | 98 | 126 | -28 | -22.22 | 4,900 | 5,754 | -854 | -14.84 |
| CO | 42 | 72 | -30 | -41.67 | 2,100 | 3,548 | -1,448 | -40.81 |
| NW | 14 | 56 | -42 | -75.00 | 700 | 2,800 | -2,100 | -75.00 |
| TOTAL | 302 | 376 | -74 | -19.68 | 15,502 | 18,806 | -3,304 | -17.57 |



MEMORANDUM

TO: Members of the Airport Authority

FROM: Christy Brunson, Finance Manager

DATE: May 2009

ITEM DESCRIPTION – Information Section Item B

Asheville Regional Airport – Explanation of Extraordinary Variances
 Month Ended March 31, 2009 (Month 9 of FY-2009)

SUMMARY

Operating Revenue (page 5 of 13) for the month of March was \$572,882; 7.7% below the budgeted amount. Year-to-date Operating Revenue is 10.4% or \$580,943 below the budget figure. Operating Expenses (page 5 of 13) were 10.89% lower than the budget amount on a year-to-date basis. Passenger Facility Charges earned were \$81,015. Income from Investments was \$5,572 for the month of March. Operating Revenue from operations and land use before depreciation was (\$157,668) for the month of March 2009.

REVENUES

Operating Revenue for the month of March 2009 was \$29,571 lower than the amount of Operating Revenue at the Airport for the month of March 2008 (\$602,453).

| | | |
|--|--------------------|--|
| Terminal Space – Non Airline Concessions | 73.58% (16.18%) | Prior year revenue item (office space) accrued Brochure sales down 57%; Baggage cart revenue down 76% |
| Rental Car – Car Rentals | (11.74%) | Loss of concessions from rental car offsite location |
| Commercial Ground Transportation | (41.06%) | Timing of receipts billed on an annual basis |
| Landing Fees | (32.96%) | Reduction in airline flight schedules. |
| FBO's/SASO's | (49.69%) | Reductions in fuel sales |
| Land Leases | 327.39% | Collected prior year revenue from Avis for maintenance facility |
| Other Leases/Fees | (14.42%) | Reductions in funding by TSA for LEO and lower security payments from Airlines based on monthly traffic |
| CFC Revenue | (35.15%) | Reduction in transaction days for rentals |
| PFC Revenue | (18.99%) | Reduction in airline flight schedules |
| Interest Revenue | (72.14%) | Low interest rates |

Year to date Operating Revenue is \$5,005,087; or 10.4% below the budget figure.

Information Section – Item B



EXPENSES

Total Operating Expenses for the month were 12.13% lower than the budget amount.

| | | |
|-------------------------------------|-----------|--|
| Professional Services | (23.72%) | Timing of expenses related legal services, surveys, and artwork |
| Accounting & Auditing | (100.00%) | Timing of annual fiscal audit |
| Other Contractual Services | (33.04%) | Skycap services not contracted |
| Travel & Training | (41.58%) | Timing of conferences and training events |
| Communications & Freight | 13.03% | Higher than budgeted telecommunications expenses |
| Utility Services | (25.76%) | Gas bill lower than budgeted |
| Rentals & Leases | 100.11% | Higher than anticipated copier expenses; rental of lift for operations |
| Printing & Binding | 33.09% | Timing of advertising (radio) purchases |
| Promotional Activities | 143.77% | Timing of expenses for Tenant appreciation event and business after hours sponsorships |
| Other Current Charges & Obligations | (20.10%) | Timing of legal notices |
| Office Supplies | (33.19%) | Timing of purchases |
| Operating Supplies | (29.71%) | Timing of purchases |
| Books, Publications, Subscriptions | 30.02% | Certification for Operations; photographs for terminal |
| Contingency | (37.17%) | Timing of expenses |

STATEMENT OF NET ASSETS

No significant changes to the Statement of Net Assets.

**ASHEVILLE REGIONAL AIRPORT
INVESTMENT AND INTEREST INCOME SUMMARY
For the Month Ended March 2009**

| <u>Institution:</u> | <u>Date of Purchase</u> | <u>Date of Maturity</u> | <u>Interest Rate</u> | <u>Investment Amount</u> | <u>Monthly Interest</u> |
|---------------------------------|-----------------------------|-----------------------------|--------------------------|------------------------------|-----------------------------|
| Bank of America | | | 0.18% | \$ 1,693,025 | 174 |
| Petty Cash | | | | 100 | |
| NC Capital Trust | | | | 2,629,750 | 2,166 |
| Restricted Cash: | | | | | |
| PFC Revenue Account | | | 0.12% | 876,364 | 82 |
| Wachovia-Gov. Advantage Acct. | | | 0.13% | 3,358,414 | 287 |
| CFC Revenue | | | 0.10% | 919,922 | 83 |
| <u>Commercial Paper:</u> | | | | | |
| General Electric | 10/1/2008 | 03/27/09 | 3.61% | 0 | 2,780 |
| Total | | | | <u>\$ 9,477,575</u> | <u>\$ 5,572</u> |

Investment Diversification:

| | |
|-----------------|----------------|
| 1.BANKS | 36.82% |
| 2.CAP.TRUST | 27.75% |
| 3.GOV.ADV.ACCT. | 35.44% |
| 4.COM.PAPER | 0.00% |
| 5. FED. AGY | 0% |
| | <u>100.00%</u> |

**ASHEVILLE REGIONAL AIRPORT
STATEMENT OF CHANGES IN FINANCIAL POSITION
For the Month Ended March 2009**

| | <u>Month</u> | <u>Prior Period</u> |
|--|----------------------------|----------------------------|
| Cash and Investments Beginning of Period (Month 03-01-2009, Prior Period 2-01-09) | \$ 8,773,931 | \$ 9,069,022 |
| Net Income before Contributions | 1,289,700 | (271,368) |
| Depreciation | 242,612 | 245,121 |
| Decrease/(Increase) in Receivables | 74,040 | 122,023 |
| Increase/(Decrease) in Payables | (77,736) | 492,059 |
| Decrease/(Increase) in Prepaid Expenses | (22,957) | 9,434 |
| Decrease/(Increase) in Long Term Assets | (770,186) | (811,207) |
| Contributed Capital | - | - |
| Capital Funds | (1,500) | (50,977) |
| Carryback of Payments to Prior Period | | |
| Bonds Payable - Current | (30,175) | (30,175) |
| Bonds Payable - Non-Current | | |
| Increase(Decrease) in Cash | <u>703,797</u> | <u>(295,090)</u> |
| Cash and Investments End of Period (03/31/2009) | <u>\$ 9,477,728</u> | <u>\$ 8,773,931</u> |

Asheville Regional Airport Authority
Cost Centers Statement of Revenue, Expenses and Changes in Net Assets

For the Month Ending March 31, 2009

| | <u>March Actual</u> | <u>March Budget</u> | <u>Variance %</u> | <u>YTD Actual</u> | <u>YTD Budget</u> | <u>Variance %</u> | <u>Annual Budget</u> |
|---|-------------------------|-------------------------|-------------------|-----------------------|-----------------------|-------------------|--------------------------|
| Operating Revenue: | | | | | | | |
| Terminal | \$271,230 | \$269,294 | 0.72% | \$2,388,324 | \$2,423,644 | (1.46%) | \$3,231,525 |
| Airfield | 63,933 | 85,807 | (25.49%) | 510,138 | 772,261 | (33.94%) | 1,029,681 |
| Hangar | 29,552 | 56,127 | (47.35%) | 427,068 | 505,144 | (15.46%) | 763,344 |
| Parking Lot/Roadway | 188,495 | 194,158 | (2.92%) | 1,572,807 | 1,747,424 | (9.99%) | 2,329,898 |
| Land Use Fees | 19,672 | 15,285 | 28.70% | 106,750 | 137,557 | (22.40%) | 183,410 |
| Total Operating Revenue | \$572,882 | \$620,671 | (7.70%) | \$5,005,087 | \$5,586,029 | (10.40%) | \$7,537,858 |
| Operating Expenses: | | | | | | | |
| Administrative | \$218,123 | \$245,829 | (11.27%) | \$2,501,075 | \$2,166,302 | 15.45% | \$2,822,231 |
| Terminal | 174,679 | 201,987 | (13.52%) | 1,261,451 | 1,817,885 | (30.61%) | 2,423,847 |
| Airfield | 90,581 | 104,716 | (13.50%) | 616,245 | 942,446 | (34.61%) | 1,256,595 |
| Hangar | 528 | 614 | (14.01%) | 2,295 | 5,522 | (58.82%) | 7,363 |
| Parking Lot | 1,345 | 1,534 | (12.32%) | 1,345 | 13,806 | (90.26%) | 18,408 |
| Rental Car Service Facility | 2,154 | - | 0.00% | 27,480 | - | - | - |
| Land Use Expenses | 528 | 614 | (13.96%) | 2,175 | 5,523 | (60.62%) | 7,363 |
| Total Operating Expenses | \$487,938 | \$555,294 | (12.13%) | \$4,412,066 | \$4,951,484 | (10.89%) | \$6,535,807 |
| Operating Revenue before Depreciation | | | | | | | |
| | \$84,944 | \$65,377 | 29.93% | \$593,021 | \$634,546 | (6.54%) | \$1,002,051 |
| Depreciation | 242,612 | 230,705 | 5.16% | 2,196,461 | 2,076,346 | 5.78% | 2,768,461 |
| Operating Income(Loss) Before Non-Operating Revenue and Expenses | | | | | | | |
| | (\$157,668) | (\$165,328) | (4.63%) | (\$1,603,440) | (\$1,441,801) | 11.21% | (\$1,766,410) |
| Non-Operating Revenue and Expense | | | | | | | |
| Customer Facility Charges | 42,960 | 66,250 | (35.15%) | 595,320 | 596,250 | (0.16%) | 795,000 |
| Passenger Facility Charges | 81,015 | 100,000 | (18.99%) | 726,717 | 900,000 | (19.25%) | 1,200,000 |
| Interest Revenue | 5,572 | 20,000 | (72.14%) | 111,609 | 180,000 | (38.00%) | 240,000 |
| Interest Expense | (22,060) | (21,325) | 3.45% | (199,404) | (197,206) | 1.11% | (260,282) |
| Sale of Assets | - | - | - | - | - | 0.00% | - |
| Non-Operating Revenue-Net | \$107,487 | \$164,925 | (34.83%) | \$1,234,242 | \$1,479,044 | (16.55%) | \$1,974,718 |

| | | | | | | | |
|---|---------------------------|-----------------------|--------------------------|---------------------------|------------------------|-------------------------|-------------------------|
| Income (Loss) Before Capital Contributions | <u>(\$50,181)</u> | <u>(\$403)</u> | <u>12,352%</u> | <u>(\$369,198)</u> | <u>\$37,243</u> | <u>(1,091.32%)</u> | <u>\$208,308</u> |
| Capital Contributions | \$1,339,882 | \$0 | 0.00% | \$2,935,669 | \$0 | 0.00% | \$0 |
| Increase in Net Assets | <u><u>\$1,289,701</u></u> | <u><u>(\$403)</u></u> | <u><u>(320,125%)</u></u> | <u><u>\$2,566,471</u></u> | <u><u>\$37,243</u></u> | <u><u>6,791.15%</u></u> | <u><u>\$208,308</u></u> |

Asheville Regional Airport Authority
Detailed Statement of Revenue, Expenses and Changes in Net Assets

For the Month Ending March 31, 2009

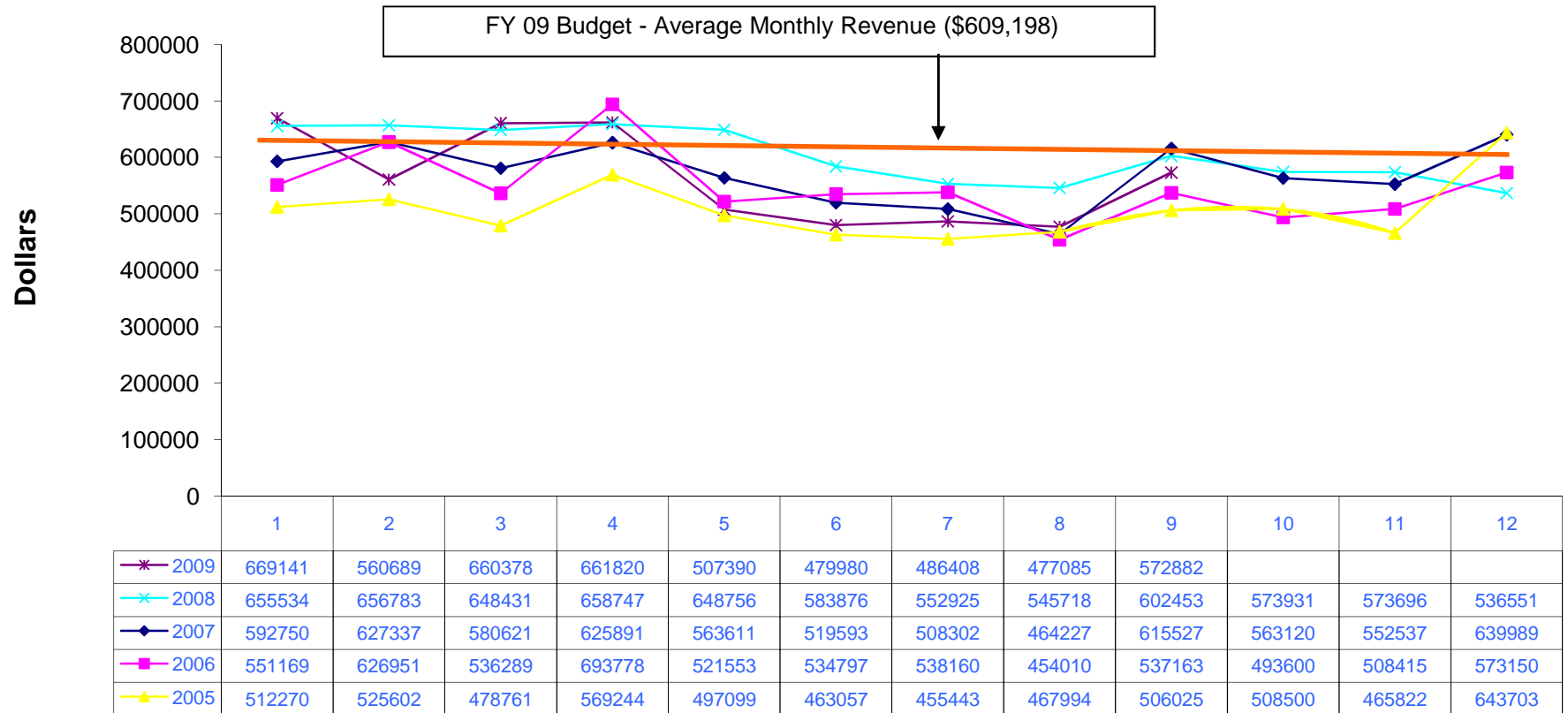
| | <u>March Actual</u> | <u>March Budget</u> | <u>Variance %</u> | <u>YTD Actual</u> | <u>YTD Budget</u> | <u>Variance %</u> | <u>Annual Budget</u> |
|--|-------------------------|-------------------------|-------------------|-----------------------|-----------------------|-------------------|--------------------------|
| Operating Revenue: | | | | | | | |
| Terminal Space Rentals - Non Airline | \$27,136 | \$15,633 | 73.58% | \$149,409 | \$140,700 | 6.19% | \$187,600 |
| Terminal Space Rentals - Airline | 92,580 | 90,982 | 1.76% | 788,065 | 818,839 | (3.76%) | 1,091,785 |
| Concessions | 8,529 | 10,175 | (16.18%) | 92,130 | 91,575 | 0.61% | 122,100 |
| Auto Parking | 186,875 | 193,107 | (3.23%) | 1,552,509 | 1,737,960 | (10.67%) | 2,317,280 |
| Rental Car - Car Rentals | 96,348 | 109,167 | (11.74%) | 937,170 | 982,500 | (4.61%) | 1,310,000 |
| Rental Car - Facility Rent | 43,328 | 40,727 | 6.39% | 332,956 | 366,540 | (9.16%) | 488,720 |
| Commercial Ground Transportation | 620 | 1,052 | (41.06%) | 18,298 | 9,464 | 93.34% | 12,618 |
| Landing Fees | 36,111 | 53,866 | (32.96%) | 267,617 | 484,796 | (44.80%) | 646,395 |
| FBO'S/SASO'S | 28,236 | 56,127 | (49.69%) | 430,213 | 505,144 | (14.83%) | 763,344 |
| Building Leases | 9,453 | 9,296 | 1.69% | 70,977 | 83,662 | (15.16%) | 111,550 |
| Land Leases | 11,219 | 2,625 | 327.39% | 30,249 | 23,625 | 28.04% | 31,500 |
| Other Leases/Fees | 32,447 | 37,914 | (14.42%) | 335,494 | 341,224 | (1.68%) | 454,966 |
| Total Operating Revenue | \$572,882 | \$620,671 | (7.70%) | \$5,005,087 | \$5,586,029 | (10.40%) | \$7,537,858 |
| Operating Expenses: | | | | | | | |
| Personnel Services | \$275,321 | \$301,245 | (8.61%) | \$2,418,581 | \$2,708,827 | (10.71%) | \$3,612,562 |
| Professional Services | 12,401 | 16,257 | (23.72%) | 101,086 | 146,314 | (30.91%) | 195,085 |
| Accounting & Auditing | - | 2,854 | (100.00%) | 12,053 | 25,688 | (53.08%) | 34,250 |
| Other Contractual Services | 34,996 | 52,265 | (33.04%) | 412,969 | 475,411 | (13.13%) | 639,522 |
| Travel & Training | 8,527 | 14,596 | (41.58%) | 89,127 | 140,112 | (36.39%) | 198,500 |
| Communications & Freight | 4,536 | 4,013 | 13.03% | 40,737 | 36,086 | 12.89% | 48,118 |
| Utility Services | 27,478 | 37,011 | (25.76%) | 308,771 | 283,406 | 8.95% | 368,158 |
| Rentals & Leases | 1,767 | 883 | 100.11% | 14,996 | 7,944 | 88.77% | 10,592 |
| Insurance | 17,292 | 17,292 | 0.00% | 156,436 | 155,625 | 0.52% | 207,500 |
| Repairs & Maintenance | 23,806 | 24,052 | (1.02%) | 261,337 | 257,980 | 1.30% | 333,388 |
| Printing & Binding | 26,104 | 19,614 | 33.09% | 131,063 | 154,012 | (14.90%) | 201,031 |
| Promotional Activities | 5,063 | 2,077 | 143.77% | 52,845 | 53,694 | (1.58%) | 64,825 |
| Other Current Charges & Obligations | 4,115 | 5,150 | (20.10%) | 27,197 | 46,350 | (41.32%) | 61,800 |
| Office Supplies | 938 | 1,404 | (33.19%) | 12,359 | 13,337 | (7.33%) | 17,550 |
| Operating Supplies | 14,354 | 20,420 | (29.71%) | 161,219 | 198,197 | (18.66%) | 260,990 |
| Books, Publications, Subscriptions & Mem | 3,677 | 2,828 | 30.02% | 24,419 | 32,747 | (25.43%) | 41,182 |
| Contingency | 5,236 | 8,333 | (37.17%) | 46,117 | 75,000 | (38.51%) | 100,000 |
| Business Development/Agreement Obligat | 22,327 | 25,000 | (10.69%) | 140,754 | 140,754 | 0.00% | 140,754 |
| Total Operating Expenses | \$487,938 | \$555,294 | (12.13%) | \$4,412,066 | \$4,951,484 | (10.89%) | \$6,535,807 |

| | | | | | | | |
|---|---------------------------|-----------------------|--------------------------|---------------------------|------------------------|-------------------------|-------------------------|
| Operating Revenue before Depreciation | 84,944 | \$65,377 | 29.93% | \$593,021 | \$634,545 | (6.54%) | \$1,002,051 |
| Depreciation | <u>242,612</u> | <u>230,705</u> | <u>5.16%</u> | <u>2,196,461</u> | <u>2,076,346</u> | <u>5.78%</u> | <u>2,768,461</u> |
| Operating Income(Loss) Before Non-Operating Revenue and Expenses | (\$157,668) | (\$165,328) | (4.63%) | (\$1,603,440) | (\$1,441,801) | 11.21% | (\$1,766,410) |
| Non-Operating Revenue and Expense | | | | | | | |
| Customer Facility Charges | 42,960 | 66,250 | (35.15%) | 595,320 | 596,250 | (0.16%) | 795,000 |
| Passenger Facility Charges | 81,015 | 100,000 | (18.99%) | 726,717 | 900,000 | (19.25%) | 1,200,000 |
| Interest Revenue | 5,572 | 20,000 | (72.14%) | 111,609 | 180,000 | (38.00%) | 240,000 |
| Interest Expense | (22,060) | (21,325) | 3.45% | (199,404) | (197,206) | 1.11% | (260,282) |
| Sale of Assets | | | | - | | 0.00% | |
| Non-Operating Revenue-Net | <u>\$107,487</u> | <u>\$164,925</u> | <u>(34.83%)</u> | <u>\$1,234,242</u> | <u>\$1,479,044</u> | <u>(16.55%)</u> | <u>\$1,974,718</u> |
| Income (Loss) Before Capital Contributions | <u>(\$50,181)</u> | <u>(\$403)</u> | <u>12,352%</u> | <u>(\$369,198)</u> | <u>\$37,243</u> | <u>(1,091.32%)</u> | <u>\$208,308</u> |
| Capital Contributions | \$1,339,882 | \$0 | 0.00% | \$2,935,669 | \$0 | 0.00% | \$0 |
| Increase in Net Assets | <u><u>\$1,289,701</u></u> | <u><u>(\$403)</u></u> | <u><u>(320,125%)</u></u> | <u><u>\$2,566,471</u></u> | <u><u>\$37,243</u></u> | <u><u>6,791.15%</u></u> | <u><u>\$208,308</u></u> |

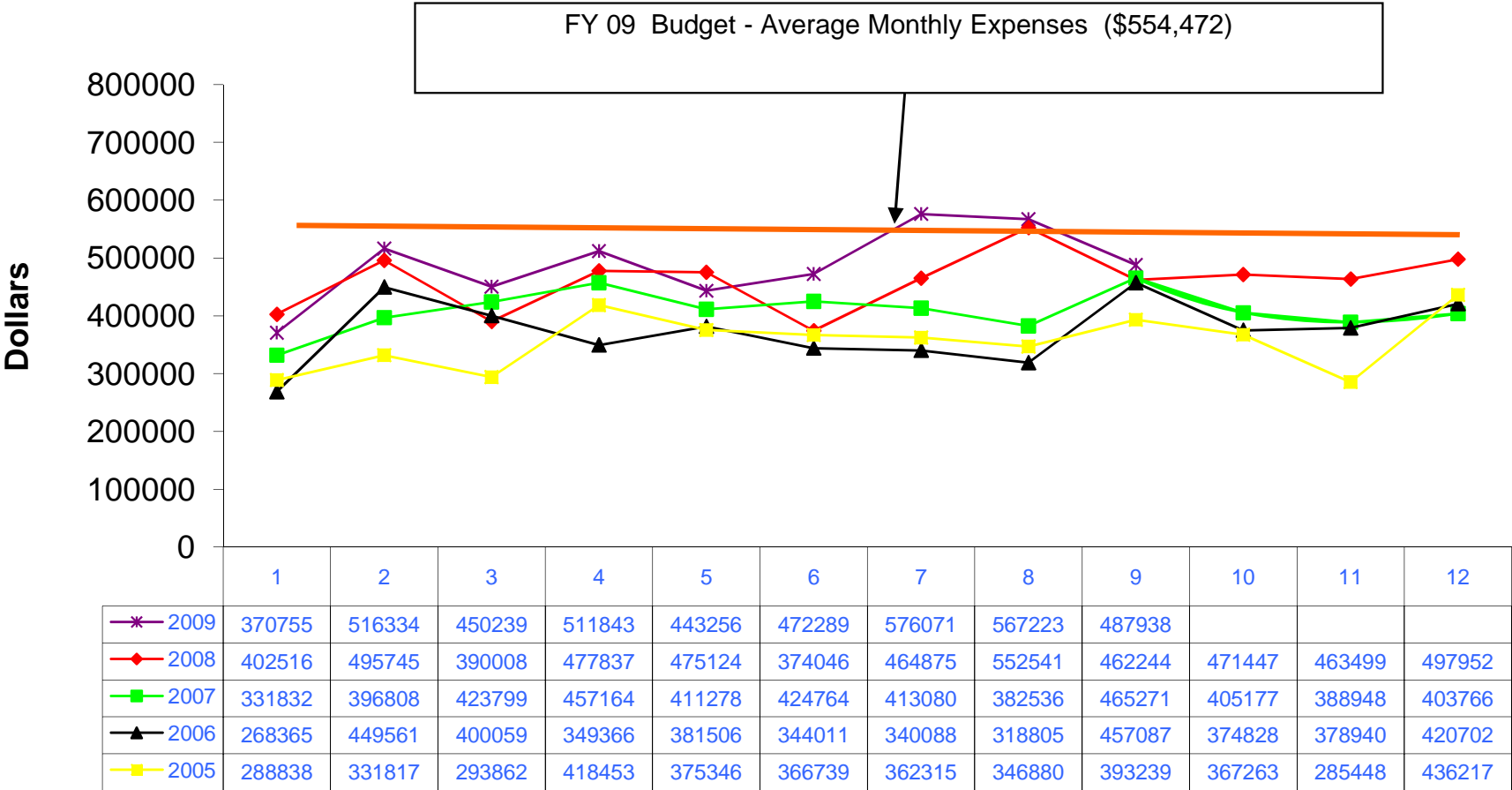
ASHEVILLE REGIONAL AIRPORT AUTHORITY
STATEMENT OF FINANCIAL POSITION
March 31, 2009

| | <u>March</u> | <u>Last Month</u> |
|---|----------------------------|----------------------------|
| ASSETS | | |
| Current Assets | | |
| Unrestricted Net Assets: | | |
| Cash and Cash Equivalents | \$4,322,874 | \$3,665,838 |
| Investments | 0 | 982,546 |
| Accounts Receivable | 73,247 | 147,290 |
| Prepaid Expenses | 53,101 | 30,144 |
| Total Unrestricted Assets | <u>4,449,222</u> | <u>4,825,818</u> |
| Restricted Assets: | | |
| Capital Funds | 269,424 | 267,924 |
| Cash and Cash Equivalents | 5,154,700 | 4,125,547 |
| Receivables | | |
| Passenger Facility Charge Funds: Receivables | | |
| Total Restricted Assets | <u>5,424,124</u> | <u>4,393,471</u> |
| Total Current Assets | 9,873,346 | 9,219,289 |
| Noncurrent Assets | | |
| Capital Assets | 21,829,036 | 21,058,849 |
| Property and Equipment - Net | 36,953,327 | 37,195,939 |
| TOTAL ASSETS | <u><u>\$68,655,709</u></u> | <u><u>\$67,474,077</u></u> |
| LIABILITIES AND NET ASSETS | | |
| Liabilities | | |
| Accounts Payable | \$1,328,389 | \$1,413,955 |
| Accrued Liabilities | \$120,000 | \$120,000 |
| Total Payable from Unrestricted Assets | 1,448,389 | 1,533,955 |
| Payable from Restricted Assets: | | |
| Construction Contracts Payable | 0 | 0 |
| Construction Contract Retainages | 485,831 | 485,831 |
| Bonds Payable - Current Portion | 95,827 | 126,003 |
| Total Payable From Restricted Assets | <u>581,658</u> | <u>611,834</u> |
| Total Current Liabilities | 2,030,047 | 2,145,789 |
| Non-Current Liabilities: | | |
| Rental Car Project Bond | 4,295,086 | 4,295,086 |
| Total Non-Current Liabilities | <u>4,295,086</u> | <u>4,295,086</u> |
| Total Liabilities | 6,325,133 | 6,440,875 |
| Net Assets: | | |
| Invested in Capital Assets | 36,953,327 | 37,195,939 |
| Unrestricted | <u>25,377,243</u> | <u>23,837,263</u> |
| Total Net Assets | <u>62,330,570</u> | <u>61,033,202</u> |
| TOTAL LIABILITIES | <u><u>\$68,655,709</u></u> | <u><u>\$67,474,077</u></u> |

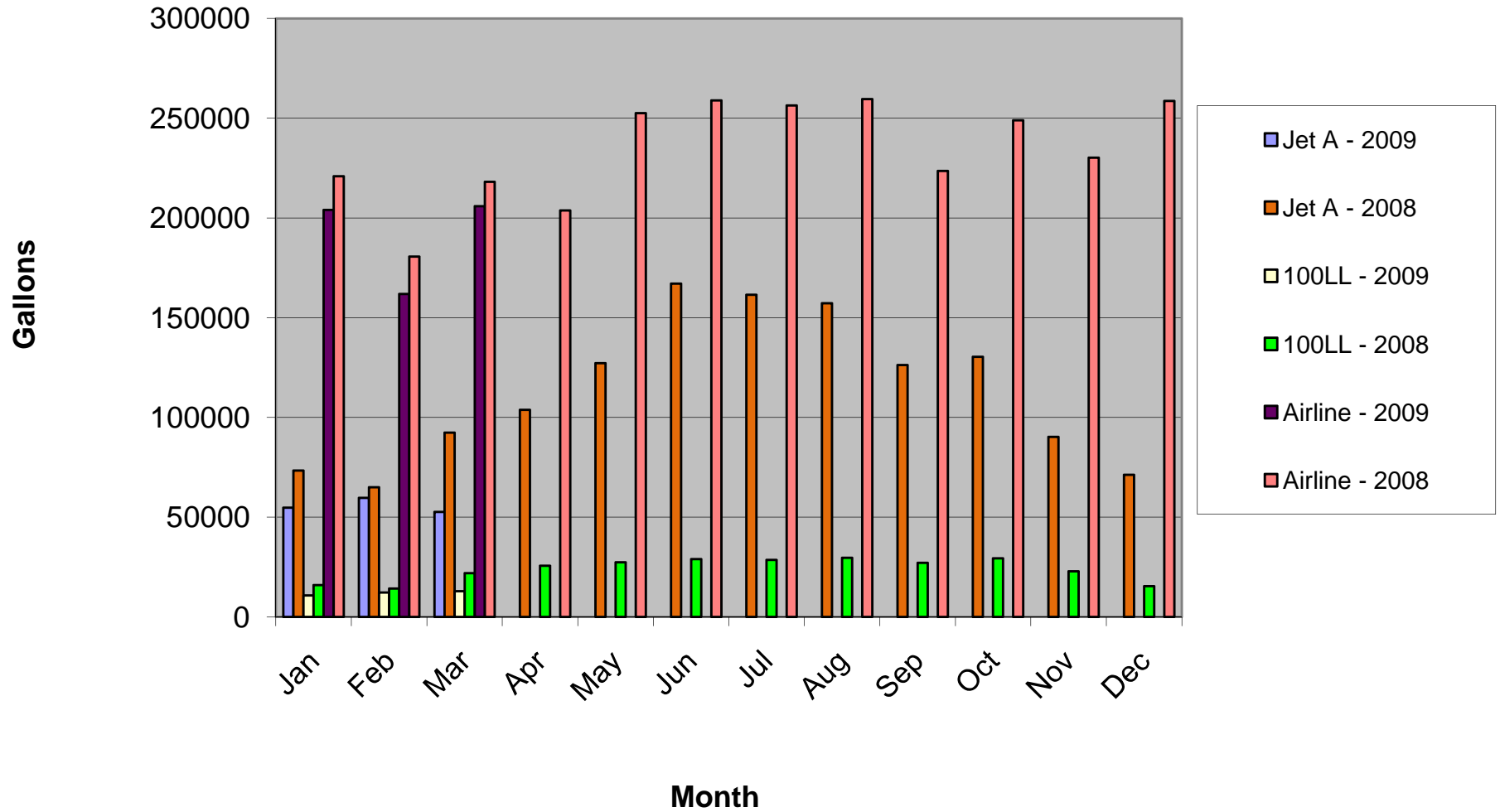
ASHEVILLE REGIONAL AIRPORT Annual Operating Revenue by Month March 2009



ASHEVILLE REGIONAL AIRPORT Annual Operating Expenses by Month March 2009

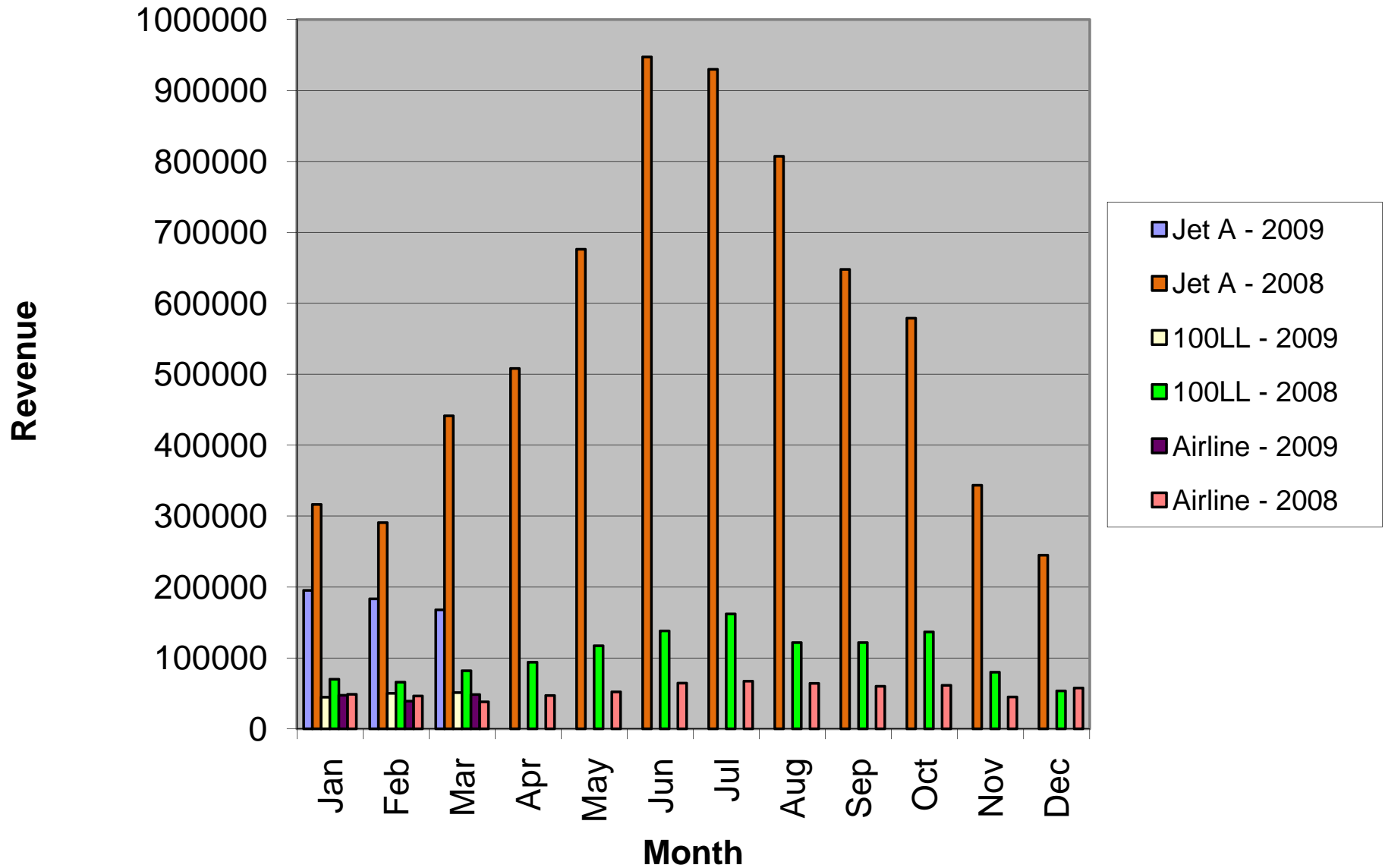


AVL Fuels Sales - Gallons March 2009



AVL Fuels Sales - Revenue

March 2009





MEMORANDUM

TO: Members of the Airport Authority

FROM: Patti L. Michel, Director of Marketing and Public Relations

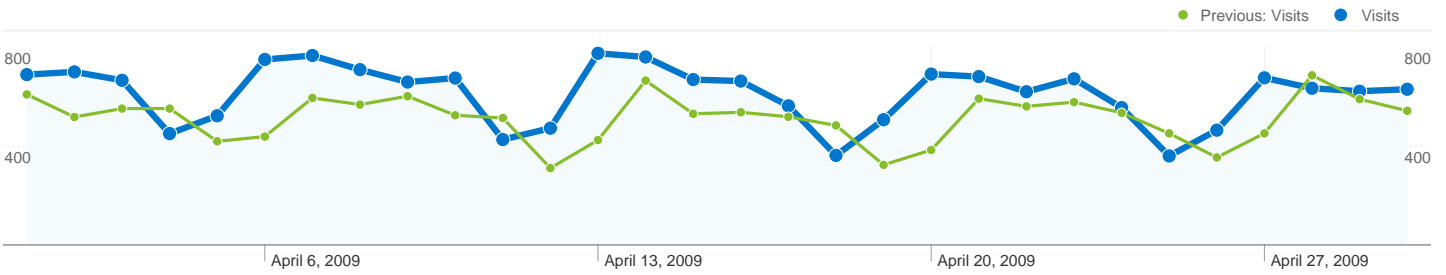
DATE: May, 2009

ITEM DESCRIPTION – Information Section Item C

May, 2009 Marketing and Public Relations Report

- Attended Chamber Business After Hours Event; Asheville Tourists reception.
- Negotiated and solidified Ad buys for AirTran incentives with Clear Channel Asheville, Clear Channel Orlando, Saga, Citizen-Times, Times News, Sophie, WNCW, WHKP, Lamar Outdoor and Regal Cinemas (sponsorship),
- Completed artwork/creative for WNC Magazine, "Spin" exhibit, Sophie Magazine, B-Gates plaque, Bag Claim Safety.
- Hired new part-time Guest Services Clerk
- Continued transition of Clear Channel Interspace and Departure Media.
- Received an average of 28 phone calls per day during business hours.
- Received/responded to 47 Southern Living leads for April.
- Received/responded to 15 media calls during month of April.
- Website Statistics - Google Analytics: See attached data regarding April activity at www.flyavl.com
- Booking Engine Statistics – Since April 1, AVL has had 33 air reservations for a total of \$264.00 in booking fees collected. 540 new people signed up to be booking engine members.

Information Section – Item C



Site Usage

18,336 Visits

Previous: 15,361 (19.37%)

41.09% Bounce Rate

Previous: 35.95% (14.29%)

62,723 Pageviews

Previous: 58,283 (7.62%)

00:04:07 Avg. Time on Site

Previous: 00:04:47 (-14.09%)

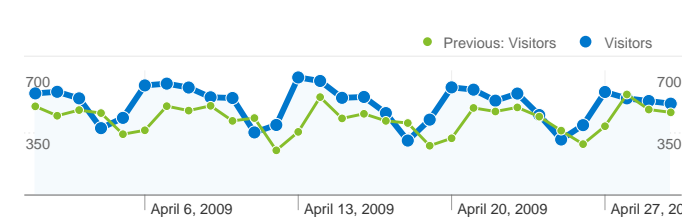
3.42 Pages/Visit

Previous: 3.79 (-9.84%)

66.58% % New Visits

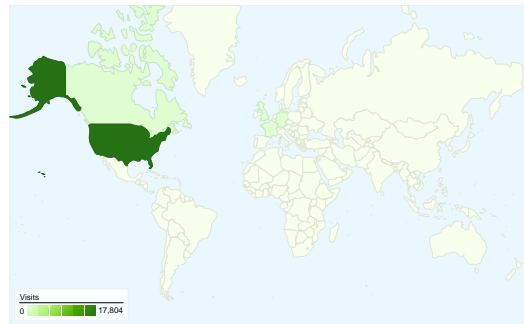
Previous: 65.98% (0.92%)

Visitors Overview

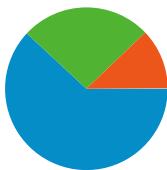


Visitors
13,589

Map Overlay world

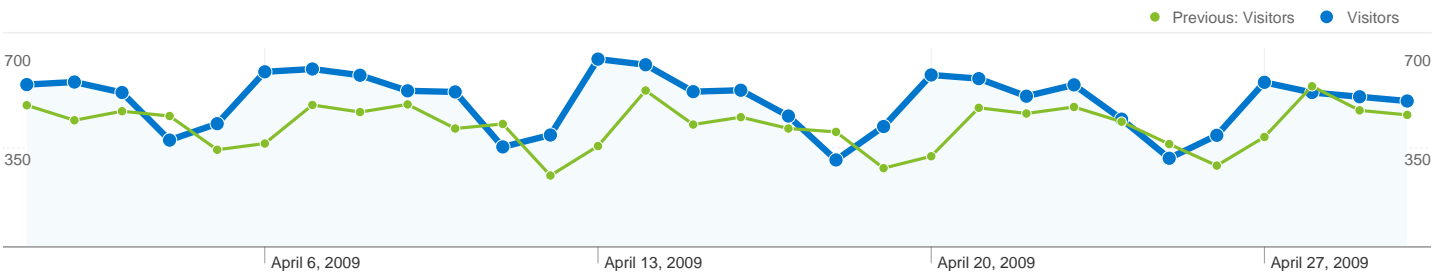


Traffic Sources Overview



- **Search Engines**
11,352.00 (61.91%)
- **Direct Traffic**
4,757.00 (25.94%)
- **Referring Sites**
2,212.00 (12.06%)
- **Other**
15 (0.08%)

| Content Overview | | |
|---------------------------------------|-----------|-------------|
| Pages | Pageviews | % Pageviews |
| / | | |
| Apr 1, 2009 - Apr 30, 2009 | 18,101 | 28.86% |
| Apr 1, 2008 - Apr 30, 2008 | 16,394 | 28.13% |
| % Change | 10.41% | 2.60% |
| /flights/flight-view---real-time.html | | |
| Apr 1, 2009 - Apr 30, 2009 | 7,326 | 11.68% |
| Apr 1, 2008 - Apr 30, 2008 | 8,297 | 14.24% |
| % Change | -11.70% | -17.95% |
| /flights/arrivals---real-time.html | | |
| Apr 1, 2009 - Apr 30, 2009 | 2,781 | 4.43% |
| Apr 1, 2008 - Apr 30, 2008 | 2,575 | 4.42% |
| % Change | 8.00% | 0.35% |
| /flights/flight-schedule-search.html | | |
| Apr 1, 2009 - Apr 30, 2009 | 2,175 | 3.47% |
| Apr 1, 2008 - Apr 30, 2008 | 1,403 | 2.41% |
| % Change | 55.02% | 44.05% |
| /rental-cars/ | | |
| Apr 1, 2009 - Apr 30, 2009 | 1,853 | 2.95% |
| Apr 1, 2008 - Apr 30, 2008 | 1,437 | 2.47% |
| % Change | 28.95% | 19.82% |



13,589 people visited this site

18,336 Visits
Previous: 15,361 (19.37%)

13,589 Absolute Unique Visitors
Previous: 11,232 (20.98%)

62,723 Pageviews
Previous: 58,283 (7.62%)

3.42 Average Pageviews
Previous: 3.79 (-9.84%)

00:04:07 Time on Site
Previous: 00:04:47 (-14.09%)

41.09% Bounce Rate
Previous: 35.95% (14.29%)

66.58% New Visits
Previous: 65.98% (0.92%)

Technical Profile

| Browser | Visits | % visits |
|----------------------------|--------|----------|
| Internet Explorer | | |
| Apr 1, 2009 - Apr 30, 2009 | 12,958 | 70.67% |
| Apr 1, 2008 - Apr 30, 2008 | 11,647 | 75.82% |
| % Change | 11.26% | -6.80% |
| Firefox | | |
| Apr 1, 2009 - Apr 30, 2009 | 3,484 | 19.00% |
| Apr 1, 2008 - Apr 30, 2008 | 2,791 | 18.17% |
| % Change | 24.83% | 4.58% |

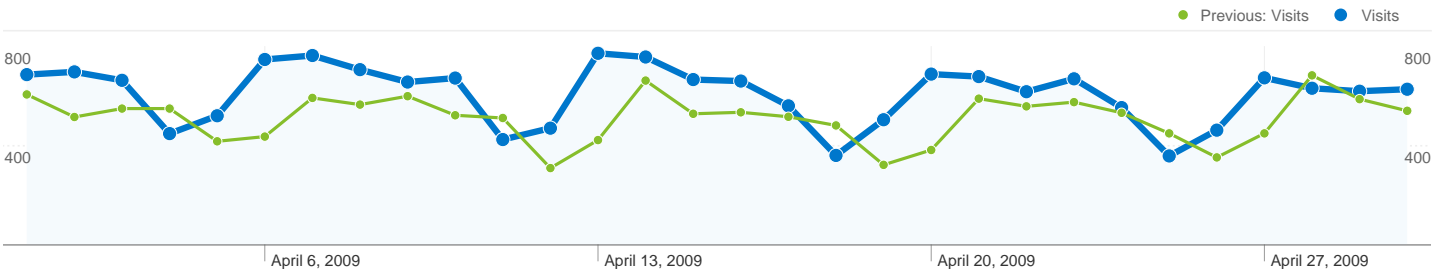
| Connection Speed | Visits | % visits |
|----------------------------|--------|----------|
| Cable | | |
| Apr 1, 2009 - Apr 30, 2009 | 5,979 | 32.61% |
| Apr 1, 2008 - Apr 30, 2008 | 4,639 | 30.20% |
| % Change | 28.89% | 7.97% |
| Unknown | | |
| Apr 1, 2009 - Apr 30, 2009 | 5,340 | 29.12% |
| Apr 1, 2008 - Apr 30, 2008 | 4,438 | 28.89% |
| % Change | 20.32% | 0.80% |

| Safari | | |
|----------------------------|---------|---------|
| Apr 1, 2009 - Apr 30, 2009 | 1,493 | 8.14% |
| Apr 1, 2008 - Apr 30, 2008 | 746 | 4.86% |
| % Change | 100.13% | 67.66% |
| Chrome | | |
| Apr 1, 2009 - Apr 30, 2009 | 189 | 1.03% |
| Apr 1, 2008 - Apr 30, 2008 | 0 | 0.00% |
| % Change | 100.00% | 100.00% |
| Opera | | |
| Apr 1, 2009 - Apr 30, 2009 | 74 | 0.40% |
| Apr 1, 2008 - Apr 30, 2008 | 106 | 0.69% |
| % Change | -30.19% | -41.52% |

| DSL | | |
|----------------------------|---------|---------|
| Apr 1, 2009 - Apr 30, 2009 | 4,563 | 24.89% |
| Apr 1, 2008 - Apr 30, 2008 | 3,827 | 24.91% |
| % Change | 19.23% | -0.11% |
| T1 | | |
| Apr 1, 2009 - Apr 30, 2009 | 1,819 | 9.92% |
| Apr 1, 2008 - Apr 30, 2008 | 1,561 | 10.16% |
| % Change | 16.53% | -2.38% |
| Dialup | | |
| Apr 1, 2009 - Apr 30, 2009 | 456 | 2.49% |
| Apr 1, 2008 - Apr 30, 2008 | 653 | 4.25% |
| % Change | -30.17% | -41.50% |

Traffic Sources Overview

Apr 1, 2009 - Apr 30, 2009
Comparing to: Apr 1, 2008 - Apr 30, 2008



All traffic sources sent a total of 18,336 visits



25.94% Direct Traffic

Previous: 24.02% (8.00%)



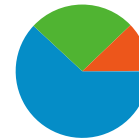
12.06% Referring Sites

Previous: 12.64% (-4.53%)



61.91% Search Engines

Previous: 63.32% (-2.23%)



- **Search Engines**
11,352.00 (61.91%)
- **Direct Traffic**
4,757.00 (25.94%)
- **Referring Sites**
2,212.00 (12.06%)
- **Other**
15 (0.08%)

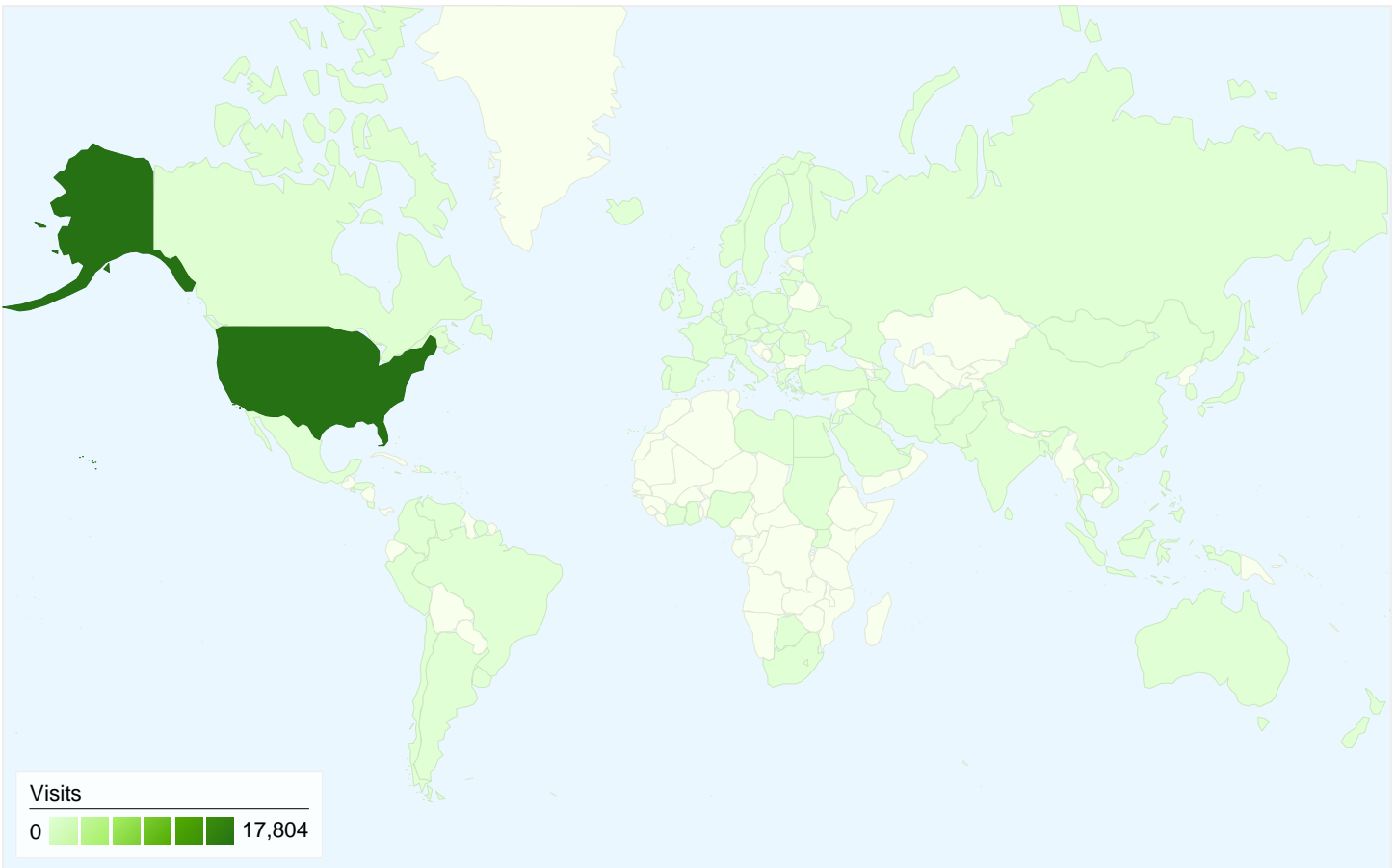
Top Traffic Sources

| Sources | Visits | % visits |
|----------------------------|--------|----------|
| google (organic) | | |
| Apr 1, 2009 - Apr 30, 2009 | 8,897 | 48.52% |
| Apr 1, 2008 - Apr 30, 2008 | 7,397 | 48.15% |
| % Change | 20.28% | 0.76% |
| (direct) ((none)) | | |
| Apr 1, 2009 - Apr 30, 2009 | 4,757 | 25.94% |
| Apr 1, 2008 - Apr 30, 2008 | 3,690 | 24.02% |
| % Change | 28.92% | 8.00% |
| yahoo (organic) | | |
| Apr 1, 2009 - Apr 30, 2009 | 1,295 | 7.06% |
| Apr 1, 2008 - Apr 30, 2008 | 1,127 | 7.34% |
| % Change | 14.91% | -3.74% |
| msn (organic) | | |
| Apr 1, 2009 - Apr 30, 2009 | 501 | 2.73% |
| Apr 1, 2008 - Apr 30, 2008 | 343 | 2.23% |
| % Change | 46.06% | 22.37% |
| aol (organic) | | |

| Keywords | Visits | % visits |
|----------------------------|--------|----------|
| asheville airport | | |
| Apr 1, 2009 - Apr 30, 2009 | 3,854 | 33.95% |
| Apr 1, 2008 - Apr 30, 2008 | 3,132 | 32.20% |
| % Change | 23.05% | 5.44% |
| asheville regional airport | | |
| Apr 1, 2009 - Apr 30, 2009 | 1,125 | 9.91% |
| Apr 1, 2008 - Apr 30, 2008 | 838 | 8.62% |
| % Change | 34.25% | 15.03% |
| asheville nc airport | | |
| Apr 1, 2009 - Apr 30, 2009 | 940 | 8.28% |
| Apr 1, 2008 - Apr 30, 2008 | 696 | 7.16% |
| % Change | 35.06% | 15.72% |
| avl | | |
| Apr 1, 2009 - Apr 30, 2009 | 433 | 3.81% |
| Apr 1, 2008 - Apr 30, 2008 | 384 | 3.95% |
| % Change | 12.76% | -3.38% |
| avl airport | | |

| | | |
|----------------------------|--------|-------|
| Apr 1, 2009 - Apr 30, 2009 | 296 | 1.61% |
| Apr 1, 2008 - Apr 30, 2008 | 243 | 1.58% |
| % Change | 21.81% | 2.05% |

| | | |
|----------------------------|--------|--------|
| Apr 1, 2009 - Apr 30, 2009 | 418 | 3.68% |
| Apr 1, 2008 - Apr 30, 2008 | 288 | 2.96% |
| % Change | 45.14% | 24.36% |



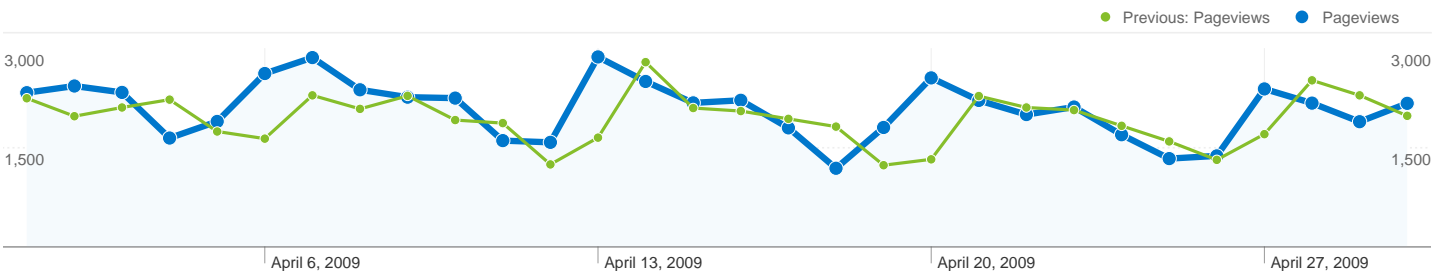
18,336 visits came from 97 countries/territories

Site Usage


| Visits | Pages/Visit | Avg. Time on Site | % New Visits | Bounce Rate | |
|--|--|---|---|--|-------------|
| 18,336 Previous: 15,361 (19.37%) | 3.42 Previous: 3.79 (-9.84%) | 00:04:07 Previous: 00:04:47 (-14.09%) | 66.67% Previous: 66.03% (0.97%) | 41.09% Previous: 35.95% (14.29%) | |
| Country/Territory | Visits | Pages/Visit | Avg. Time on Site | % New Visits | Bounce Rate |
| United States | | | | | |
| April 1, 2009 - April 30, 2009 | 17,804 | 3.42 | 00:04:09 | 66.14% | 40.97% |
| April 1, 2008 - April 30, 2008 | 14,678 | 3.83 | 00:04:52 | 65.68% | 35.49% |
| % Change | 21.30% | -10.65% | -14.73% | 0.70% | 15.46% |
| Canada | | | | | |
| April 1, 2009 - April 30, 2009 | 122 | 4.04 | 00:03:32 | 87.70% | 36.07% |
| April 1, 2008 - April 30, 2008 | 91 | 3.38 | 00:01:54 | 85.71% | 47.25% |
| % Change | 34.07% | 19.39% | 86.30% | 2.32% | -23.68% |
| United Kingdom | | | | | |
| April 1, 2009 - April 30, 2009 | 86 | 3.51 | 00:03:30 | 70.93% | 41.86% |


| | | | | | |
|--------------------------------|---------|---------|-----------|---------|---------|
| April 1, 2008 - April 30, 2008 | 115 | 3.44 | 00:02:03 | 76.52% | 35.65% |
| % Change | -25.22% | 1.98% | 70.53% | -7.31% | 17.41% |
| Germany | | | | | |
| April 1, 2009 - April 30, 2009 | 30 | 2.53 | 00:02:29 | 83.33% | 46.67% |
| April 1, 2008 - April 30, 2008 | 43 | 3.95 | 00:02:36 | 83.72% | 27.91% |
| % Change | -30.23% | -35.92% | -4.76% | -0.46% | 67.22% |
| France | | | | | |
| April 1, 2009 - April 30, 2009 | 23 | 3.00 | 00:00:59 | 73.91% | 56.52% |
| April 1, 2008 - April 30, 2008 | 30 | 5.60 | 00:08:15 | 76.67% | 23.33% |
| % Change | -23.33% | -46.43% | -88.14% | -3.59% | 142.24% |
| Ireland | | | | | |
| April 1, 2009 - April 30, 2009 | 16 | 3.56 | 00:01:26 | 75.00% | 31.25% |
| April 1, 2008 - April 30, 2008 | 14 | 1.93 | 00:01:22 | 85.71% | 50.00% |
| % Change | 14.29% | 84.72% | 4.95% | -12.50% | -37.50% |
| China | | | | | |
| April 1, 2009 - April 30, 2009 | 14 | 3.36 | 00:03:23 | 92.86% | 50.00% |
| April 1, 2008 - April 30, 2008 | 12 | 1.50 | 00:00:06 | 100.00% | 50.00% |
| % Change | 16.67% | 123.81% | 3,141.14% | -7.14% | 0.00% |
| India | | | | | |
| April 1, 2009 - April 30, 2009 | 14 | 2.36 | 00:01:26 | 100.00% | 42.86% |
| April 1, 2008 - April 30, 2008 | 21 | 1.62 | 00:01:51 | 80.95% | 52.38% |
| % Change | -33.33% | 45.59% | -22.91% | 23.53% | -18.18% |
| Taiwan | | | | | |
| April 1, 2009 - April 30, 2009 | 12 | 3.08 | 00:01:10 | 75.00% | 58.33% |
| April 1, 2008 - April 30, 2008 | 8 | 1.38 | 00:00:28 | 75.00% | 62.50% |
| % Change | 50.00% | 124.24% | 147.28% | 0.00% | -6.67% |
| Australia | | | | | |
| April 1, 2009 - April 30, 2009 | 12 | 2.00 | 00:01:12 | 91.67% | 58.33% |
| April 1, 2008 - April 30, 2008 | 22 | 3.32 | 00:03:43 | 95.45% | 54.55% |
| % Change | -45.45% | -39.73% | -67.92% | -3.97% | 6.94% |


1 - 10 of 97



Pages on this site were viewed a total of 62,723 times

 **62,723 Pageviews**
Previous: 58,283 (7.62%)

 **43,406 Unique Views**
Previous: 39,039 (11.19%)

 **41.09% Bounce Rate**
Previous: 35.95% (14.29%)

Top Content

| Pages | Pageviews | % Pageviews |
|---------------------------------------|-----------|-------------|
| / | | |
| Apr 1, 2009 - Apr 30, 2009 | 18,101 | 28.86% |
| Apr 1, 2008 - Apr 30, 2008 | 16,394 | 28.13% |
| % Change | 10.41% | 2.60% |
| /flights/flight-view---real-time.html | | |
| Apr 1, 2009 - Apr 30, 2009 | 7,326 | 11.68% |
| Apr 1, 2008 - Apr 30, 2008 | 8,297 | 14.24% |
| % Change | -11.70% | -17.95% |
| /flights/arrivals---real-time.html | | |
| Apr 1, 2009 - Apr 30, 2009 | 2,781 | 4.43% |
| Apr 1, 2008 - Apr 30, 2008 | 2,575 | 4.42% |
| % Change | 8.00% | 0.35% |
| /flights/flight-schedule-search.html | | |
| Apr 1, 2009 - Apr 30, 2009 | 2,175 | 3.47% |
| Apr 1, 2008 - Apr 30, 2008 | 1,403 | 2.41% |
| % Change | 55.02% | 44.05% |
| /rental-cars/ | | |

| | | |
|----------------------------|--------|--------|
| Apr 1, 2009 - Apr 30, 2009 | 1,853 | 2.95% |
| Apr 1, 2008 - Apr 30, 2008 | 1,437 | 2.47% |
| % Change | 28.95% | 19.82% |

Asheville Regional Airport Authority
Project Report - May 2009

| Project Number | Project Name | Project Description | Professional Services Consultant | Professional Services Contract | General Contractor | Original Construction Contract | Change Orders (thru 05/01/09) | Percent of Original Contract | Total Project Cost | Percent Complete | Expensed to Date (thru 05/01/09) | Start Date | End Date | Current Project Status (as of 05/01/09) |
|---------------------------|--|--|----------------------------------|--------------------------------|-------------------------------------|--------------------------------|-------------------------------|------------------------------|--------------------|------------------|----------------------------------|------------|-------------|---|
| Planning Phase | | | | | | | | | | | | | | |
| 1 | Runway Rehabilitation Project Phase 1 - Evaluation | Phase 1 of the Runway Rehabilitation Project includes the evaluation of the pavement conditions, lighting, signage, markings and NAVAIDS | RS&H | \$186,633.00 | na | na | na | na | \$186,633.00 | 99% | \$165,840.35 | Nov-08 | May-09 | A presentation was provided at the April Board meeting. Staff continues to work with the FAA on possible funding. |
| Design Phase | | | | | | | | | | | | | | |
| 2 | A Gates - Terminal Renovation & Improvements Project | Renovation & Improvements to the A Gates hold room area. Project also includes 2 new passenger boarding bridges. | RS&H | \$949,990.00 | na | na | na | na | \$949,990.00 | 80% | \$474,995.00 | Feb-09 | Jun-09 | Final design is underway. Bidding is scheduled for May with a recommendation to award planned for the June 12 Board meeting. |
| 3 | Landside Parking and Roadway Access Project | The Landside Parking and Roadway Access Project includes 3 components of work: public parking lots, terminal access roadway, general aviation access roadway, and expansion of the toll plaza facility. | The LPA Group | \$729,044.00 | na | na | na | na | \$898,856.00 | 80% | \$352,884.85 | Nov-08 | Jun-09 | A project presentation was made at the April Board meeting. Bidding is scheduled for May 2009 and bid award is planned for June 2009. |
| Construction Phase | | | | | | | | | | | | | | |
| 4 | 22,000 Sq Ft Bulk Hangar - 168 Wright Brothers Way | A 22,000 sq ft bulk hangar will be constructed on existing ramp area adjacent to the Lacy Griffin Building. The hangar will be under a management agreement with Million Air. | LPA Group | \$265,535.00 | Momentum Construction Services, LLC | \$1,928,000.00 | -\$23,973.22 | -2.43% | \$2,169,561.78 | 80% | \$1,593,736.78 | Oct-08 | May-09 | Substantial completion inspection is scheduled for May 18. |
| 5 | North General Aviation Expansion Project | The North GA project includes multiple phases; phase one consisted of tree harvesting and logging operations, phase two included clearing and grubbing of the site and phase three involves the placement and compaction of structural fill material for the site. | AVCON | \$99,100.00 | Charah | \$ 352,690.50 | \$25,494.00 | 7.23% | \$3,700,000.00 | 65% | \$ 2,348,566.17 | Nov-07 | Spring 2010 | The Second phase of fill placement is underway. |
| Close-Out Phase | | | | | | | | | | | | | | |
| 6 | Terminal Renovation and Expansion - Phase 1 | The Terminal Renovation and Expansion - Phase 1 Project includes enlarging the baggage claim area and airline ticket office areas. Improvements and modifications include additional square footage and increased baggage capacity. | SchenkelShultz | \$644,242.82 | Perry Bartsch Jr. | \$ 4,479,000.00 | \$1,019,208.61 | 21.08% | \$8,022,299.00 | 99% | \$ 6,053,829.01 | Jul-06 | | Punchlist work is underway. The contractor is also working on close out documentation. |
| 7 | Security System & Access Control Project | The Security System & Access Control Project includes the design and professional services for replacing and improving the current ACS and CCTV systems. | Faith Group | \$185,870.00 | I-Sys | \$ 1,473,984.00 | \$184,151.21 | 12.50% | \$2,098,815.21 | 99% | \$ 1,863,441.97 | Jul-06 | | The security project contractor is working on punchlist items and closeout documentation. |

Airportsurvey.com



AVL

Airport Facilities Review For 1st Quarter 2009

Welcome

- Welcome to the Airportsurvey.com Airport Facilities Review for the recent quarter, a complimentary data set provided to Airportsurvey.com participating airports
- The following slides provide non-weighted scores and ratings based on an independent survey of air travelers
- Note that passenger responses are based on perception, rather than objective assessment
- Value Added Services available from Canmark include:
 - Report analysis
 - Statistical testing
 - Air carrier responses
 - Non-facility responses
 - Tailored comparison sets
 - Passenger demographics
 - Sample size enhancement
 - Targeted and customized reporting
 - Custom survey questions and content

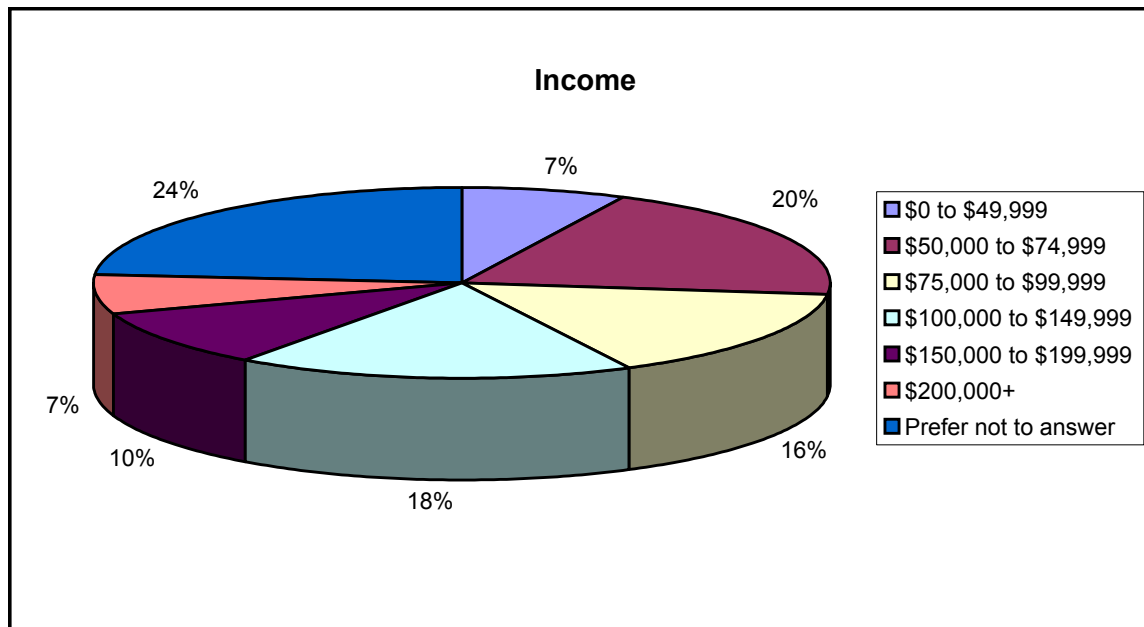
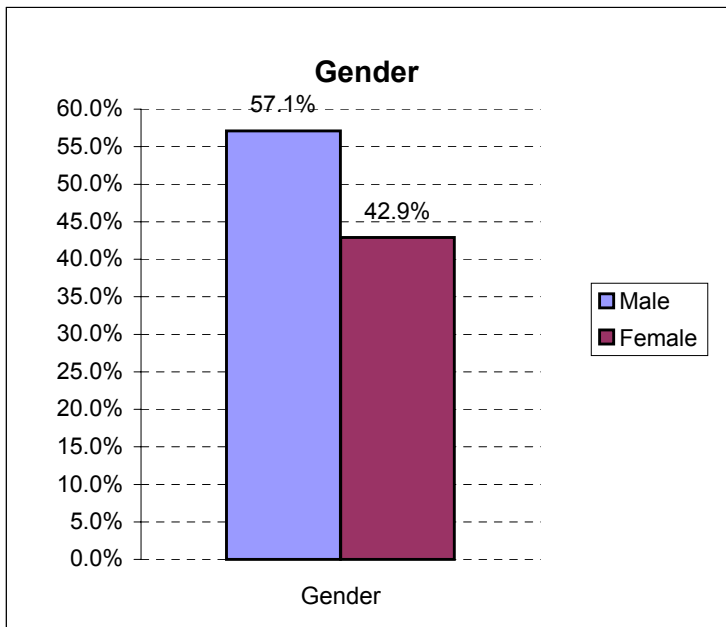
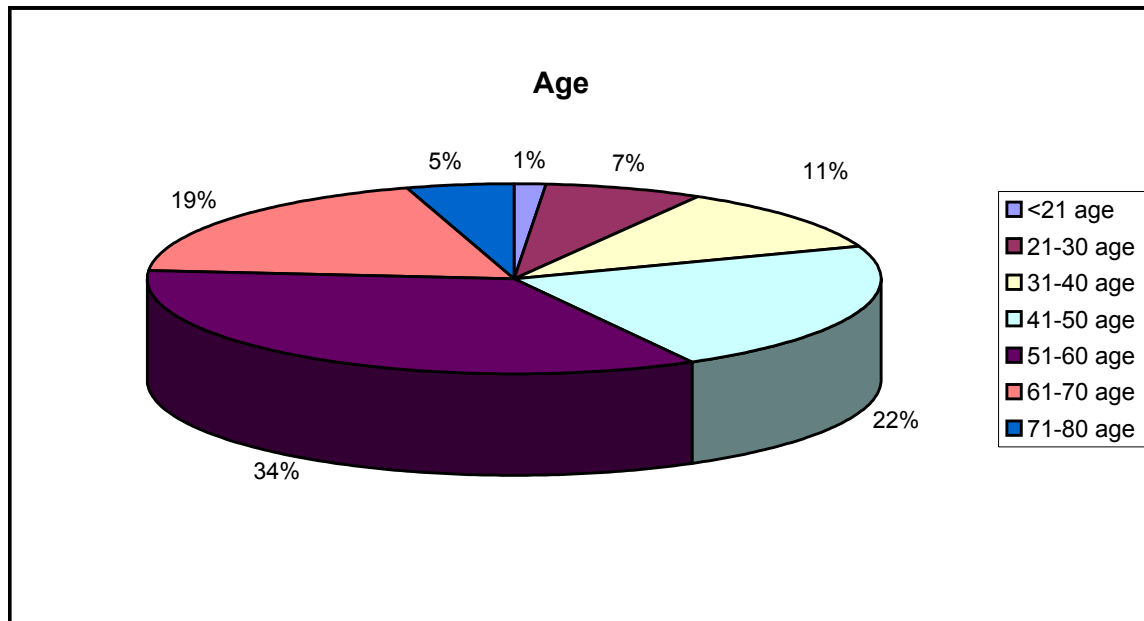
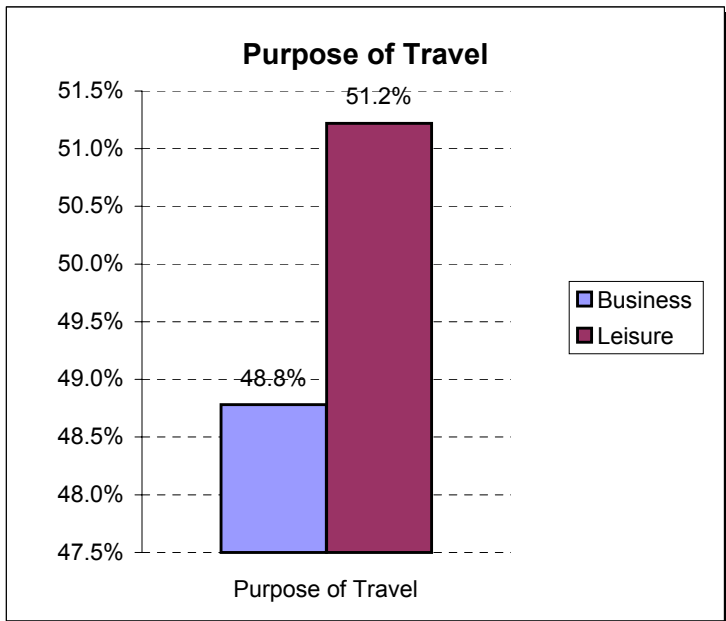
No representations are made as to the completeness or accuracy of information contained herein. Airport facility raw data is available upon request.

Overview

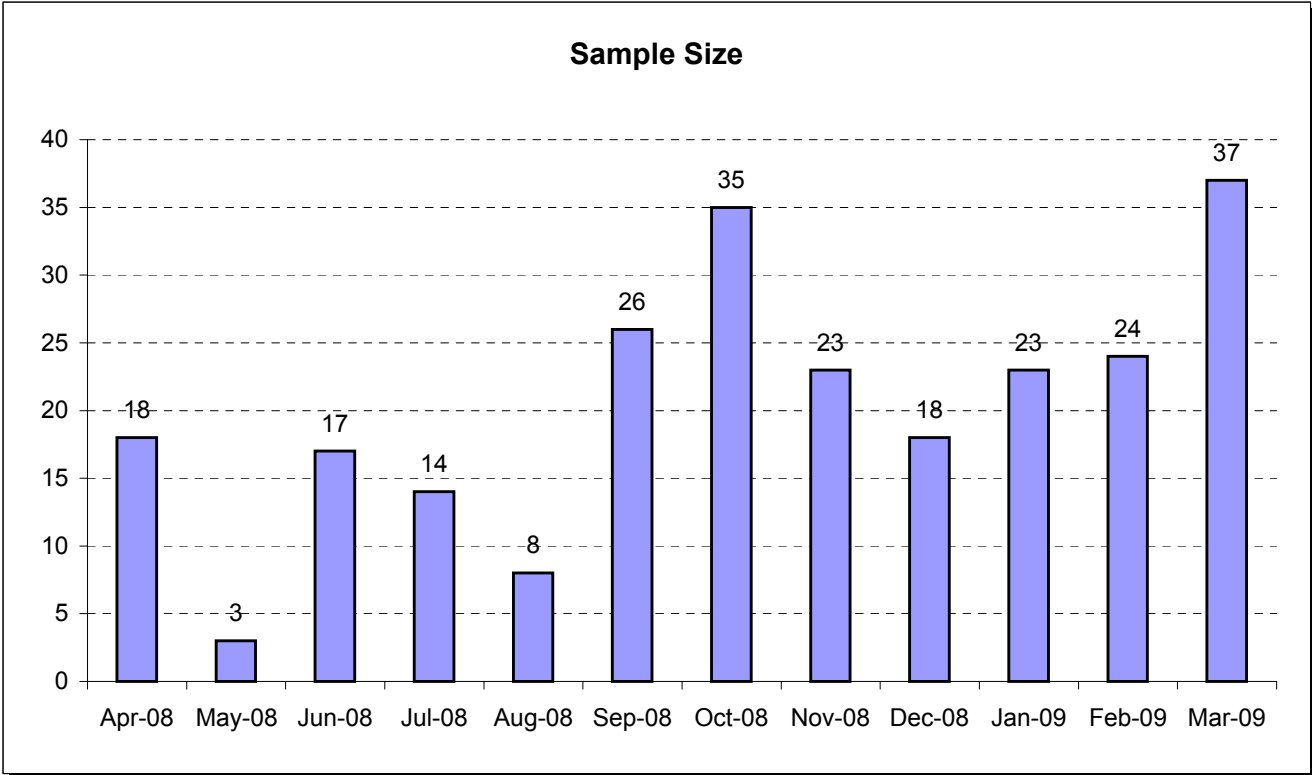
- ***Airportsurvey.com*** is an ongoing, all-inclusive online passenger satisfaction survey program from Canmark Research Center
- Invitations to take the survey are distributed at select airports across the country
- Over 30 airports participate
- Each survey invitation card is single-use, and must reference an actual flight
- Survey distribution occurs approximately three days per month
- Response scale is 1 through 5: Poor, Fair, Good, Very Good, Excellent
- Survey participants have a chance to win round-trip airline tickets
- Response rates vary from 10% to 20% based on location
- Facilities attributes are scored according to check-in airport
- Airports are grouped into three tiers according to DOT originating revenue*

*Updated 4th Quarter 2008

Passenger Demographics



General Findings



Sample is clustered around airport invitation distribution dates.

Sample reflects passengers intercepted at arrival airports who rated check-in airport.

| | AVL | Similar | +/- | Pct |
|---|------|---------|--------|--------|
| Overall | 4.00 | 4.07 | (0.07) | -1.8% |
| Availability of parking | 3.95 | 3.97 | (0.02) | -0.4% |
| Cost of parking | 3.40 | 3.32 | 0.08 | 2.2% |
| Clear, easy to follow signs | 3.88 | 3.87 | 0.01 | 0.3% |
| Cleanliness | 4.19 | 4.09 | 0.09 | 2.2% |
| Restrooms | 4.15 | 3.98 | 0.17 | 4.1% |
| Concessions / restaurants | 2.90 | 3.38 | (0.47) | -16.3% |
| Transportation to your gate / concourse / terminal | 3.74 | 3.81 | (0.07) | -1.8% |
| Security: Wait time at checkpoint | 4.47 | 4.15 | 0.31 | 7.0% |
| Security: Professionalism of personnel | 4.38 | 4.16 | 0.22 | 5.1% |
| Security: Confidence in airport security procedures | 4.10 | 3.90 | 0.19 | 4.8% |

Statistical means testing not performed on results

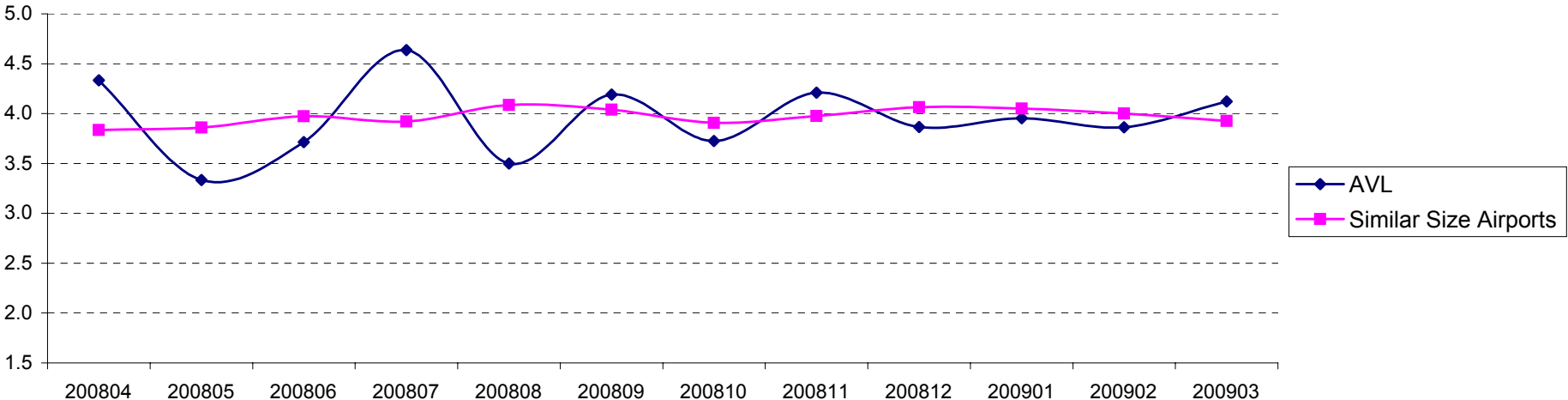
| | |
|----------------------|------------|
| AVL Responses | 246 |
|----------------------|------------|

Overall Satisfaction with Airport Facilities

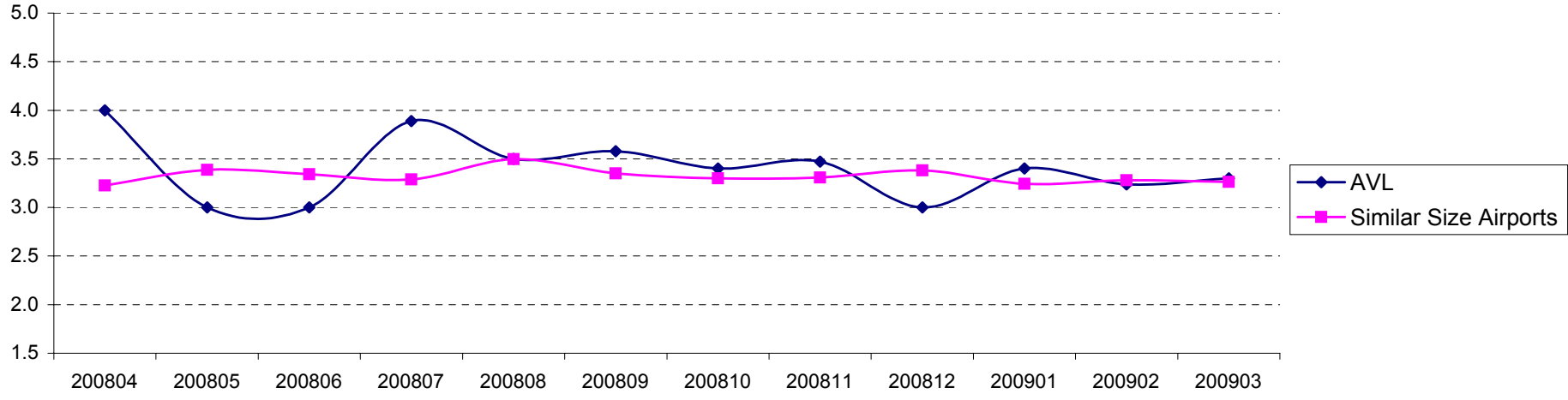


Parking Satisfaction

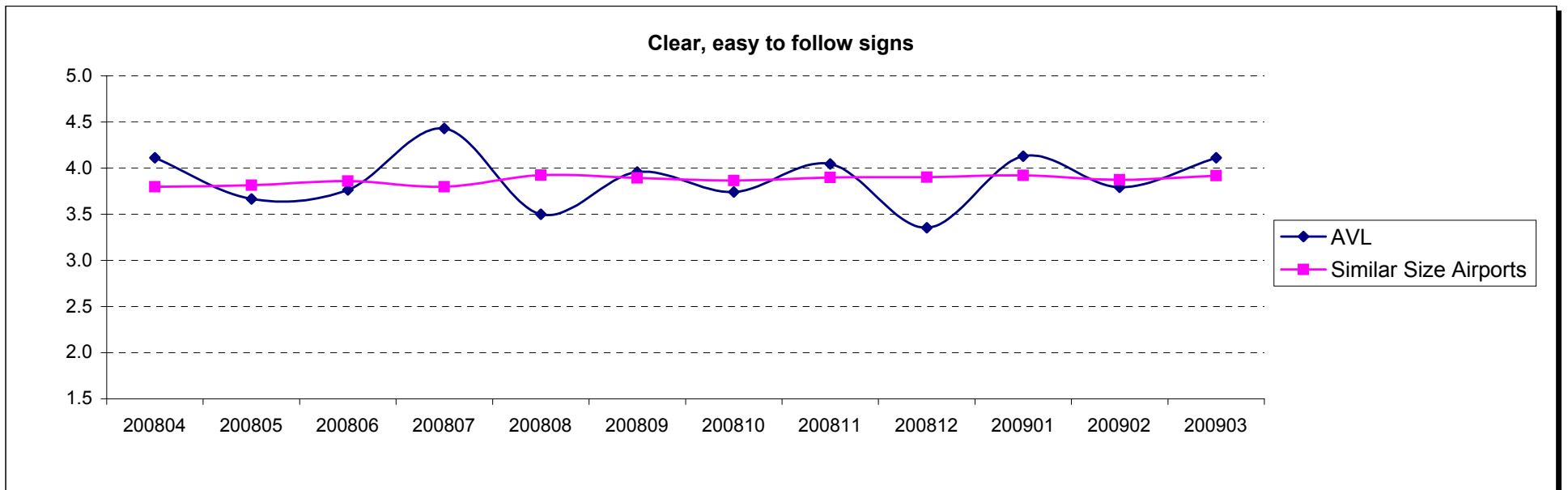
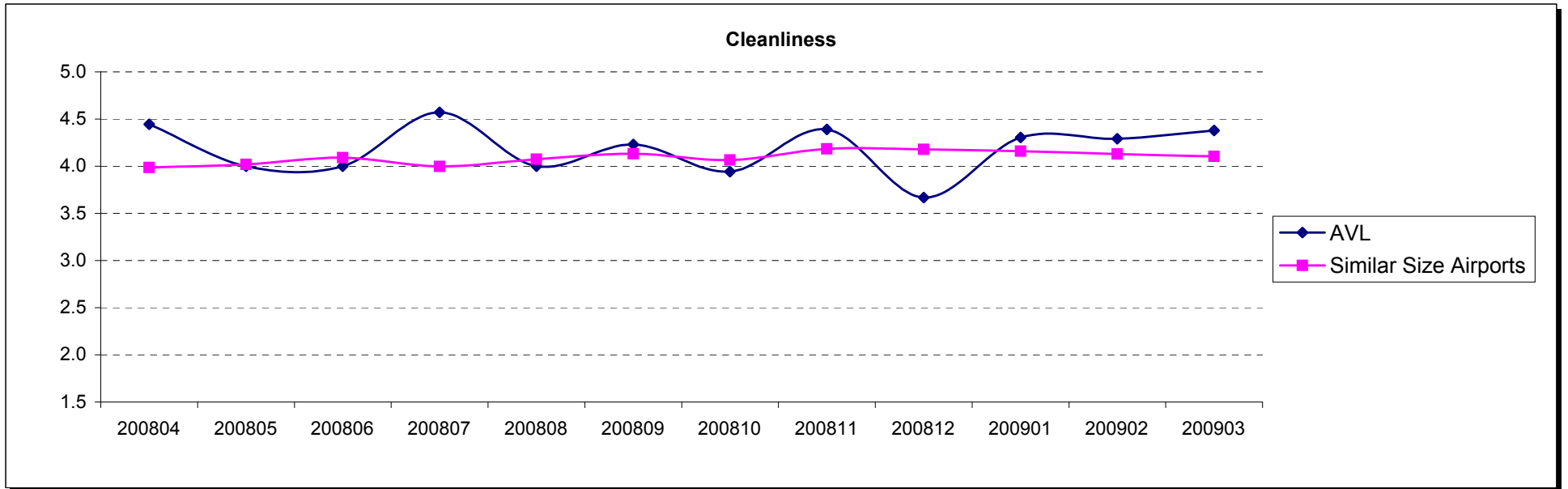
Availability of parking



Cost of parking

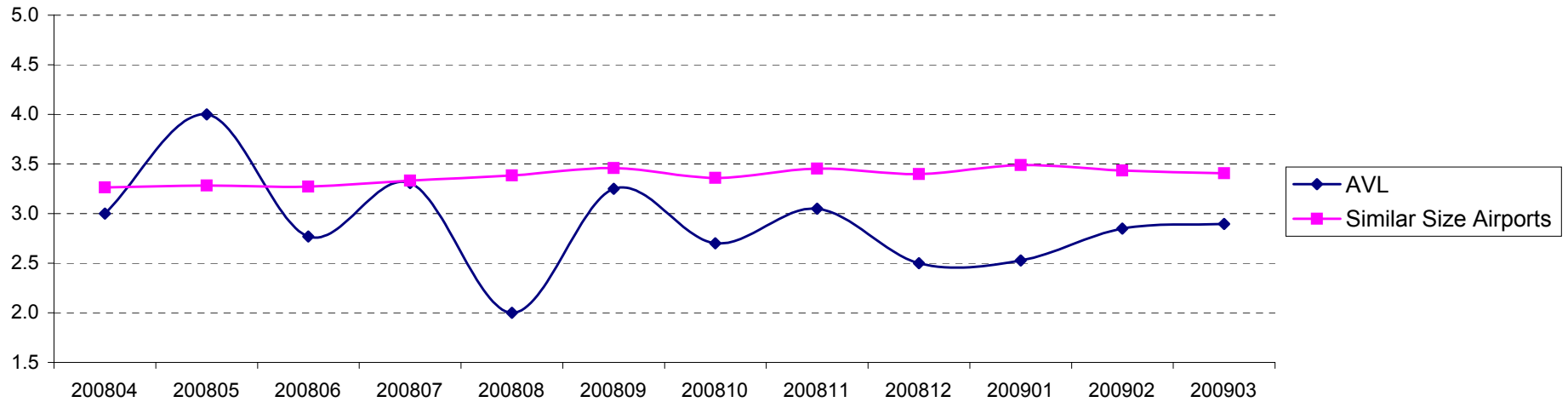


Cleanliness and Signage

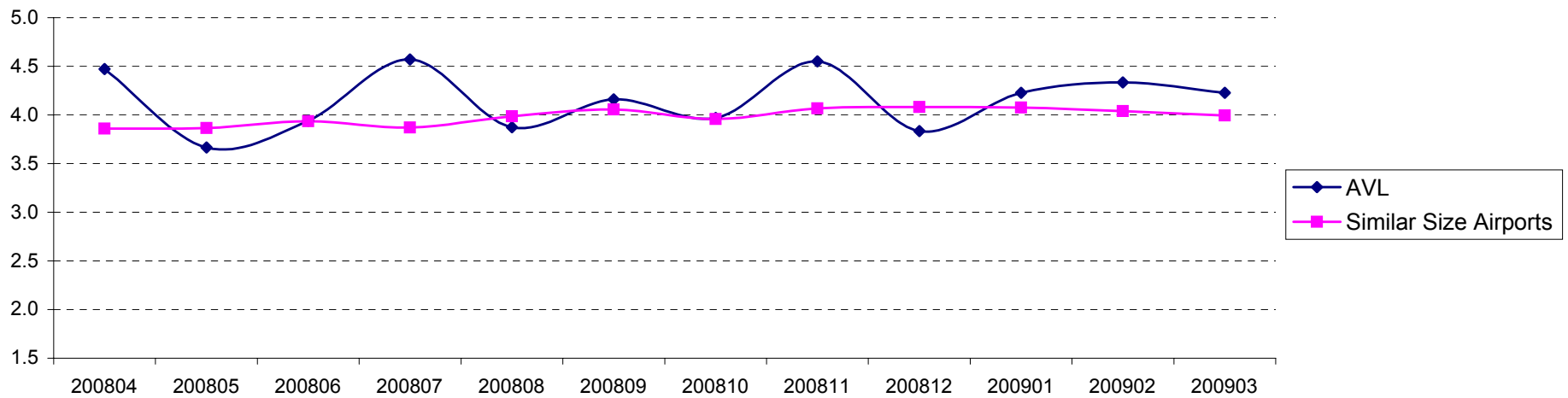


Concessions and Restrooms

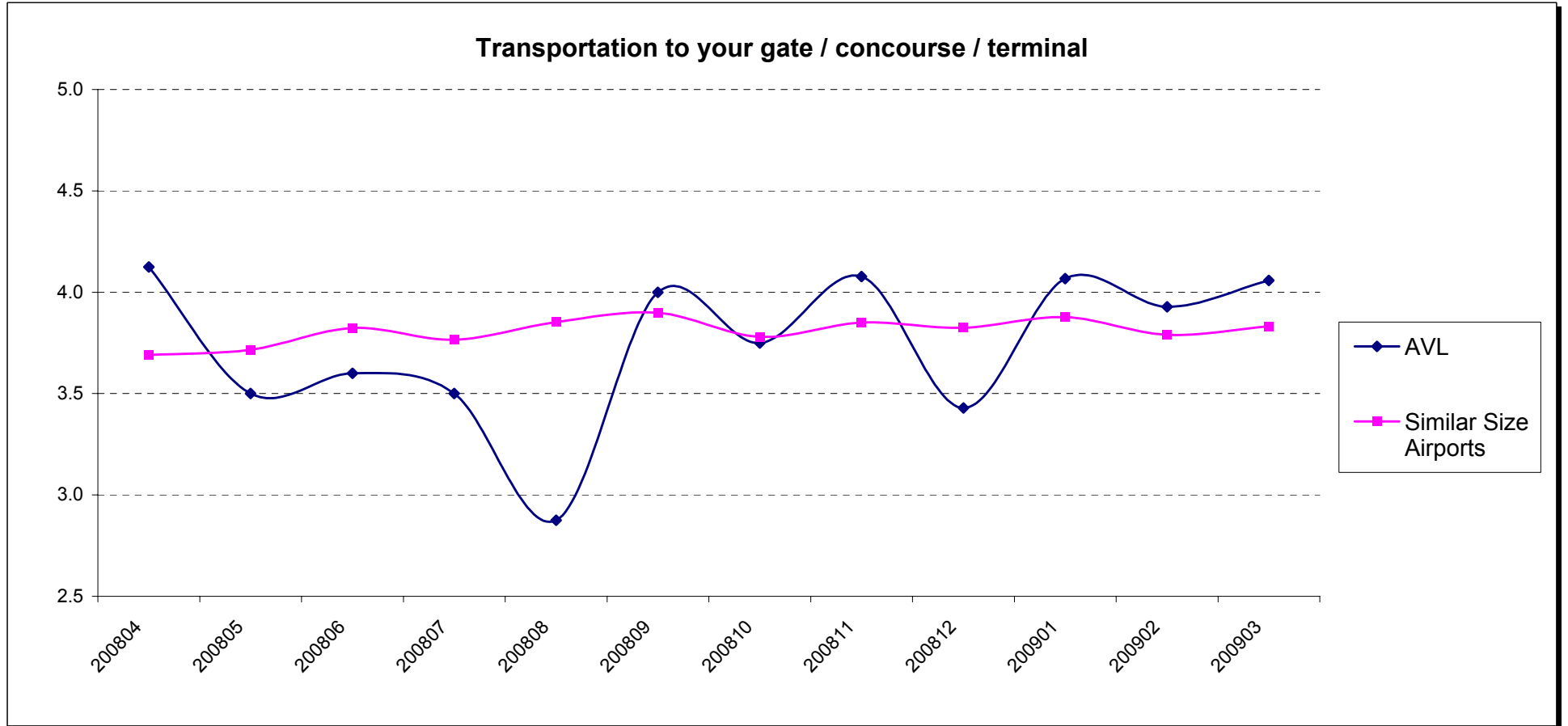
Concessions / Restaurants



Restrooms

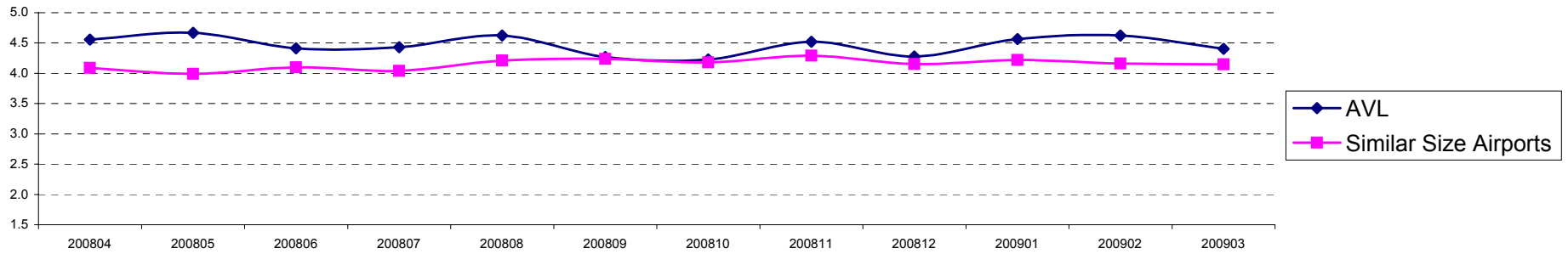


Transportation to Departure Gate

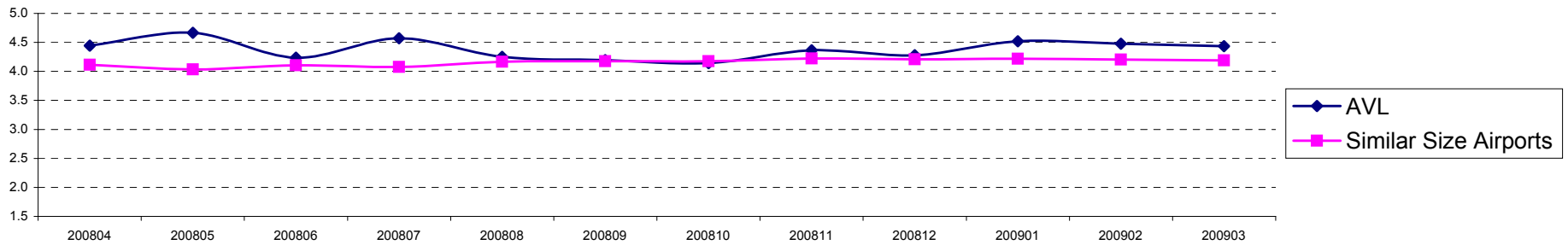


Airport Security

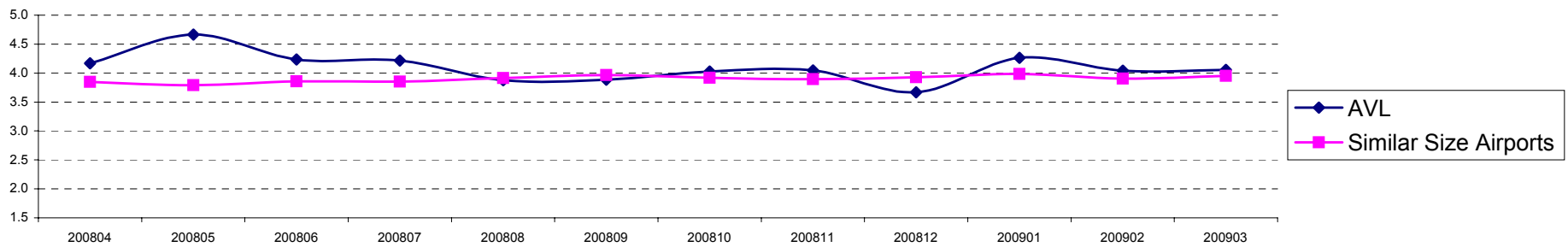
Security: Wait time at checkpoint



Security: Professionalism of security personnel



Security: Confidence in airport security procedures



Appendix A - Geographic Breakdown of Respondents

| | | | |
|----|-----|----|---|
| AL | 1 | SD | 2 |
| AR | 3 | TN | 3 |
| AZ | 1 | TX | 8 |
| CA | 3 | UT | 2 |
| CO | 5 | VT | 1 |
| CT | 1 | WA | 5 |
| FL | 9 | WI | 3 |
| GA | 1 | | |
| IA | 2 | | |
| IL | 3 | | |
| KS | 1 | | |
| MA | 2 | | |
| MD | 1 | | |
| ME | 1 | | |
| MI | 8 | | |
| MN | 2 | | |
| MO | 1 | | |
| MT | 2 | | |
| NC | 141 | | |
| NJ | 4 | | |
| NM | 1 | | |
| NY | 6 | | |
| OH | 1 | | |
| OR | 4 | | |
| PA | 1 | | |
| SC | 6 | | |

Note: Only includes passengers who indicated state of residence

Appendix B - About Canmark

- Since 1993 Canmark Technologies has combined market research, programming, and technical expertise with thoughtful attention to client needs. Our problem-solving orientation has earned the respect of business clients and market researchers across North America.
- With an experienced staff of technical experts and project managers specializing in various fields of data capture and manipulation, programming and software development, web design and scripting, Canmark is able to leverage superior technology and know-how to support projects of all types and scope in the most cost-effective manner possible.
- Areas of expertise include survey development and delivery, project and data management services, requirements gathering, data sampling, paper and web forms management, custom lasering and printing, distribution logistics, data processing, custom programming for data cleansing, reporting and data analysis, and project consulting.
- We stand ready to meet your data needs, if you have any questions, please do not hesitate to contact us.

Appendix C - Contacts

North America & Europe

Paul Isaacs, President

pisaacs@canmarktech.com

1-877-441-2057, ext. 11

