



## MEMORANDUM

TO: Members of the Airport Authority

FROM: David N. Edwards, Jr., A.A.E.

DATE: May 9, 2008

### Informational Reports:

- A. March, 2008 Traffic Report ([document](#))
- B. March, 2008 Monthly Financial Report ([document](#))
- C. May, 2008 Marketing and Public Relations Report ([document](#))
- D. May, 2008 Development/Project Status Report ([document](#))
- E. Potential Board Items for the Next Regular Scheduled Meeting
  - Award of Rental Car Bid
  - Award of the Rapid Intervention Vehicle for Aircraft Rescue and Firefighting



**MONTHLY TRAFFIC REPORT  
ASHEVILLE REGIONAL AIRPORT  
May 9, 2008**

**SUMMARY**

March 2008 overall passenger traffic numbers were down 5.6%. Passenger traffic numbers reflect a 3.7% decrease in passenger enplanements from March 2007.

**AIRLINE PERFORMANCE**

Atlantic Southeast Airlines (ASA): Delta/ASA's March 2008 enplanements decreased by 11.7% compared to March 2007. There were a total of four (4) flight cancellations for the month.

Continental Airlines: Continental's March 2008 passenger enplanements increased by 5.8% compared to March 2007. There was one (1) flight cancellation for the month.

Northwest Airlines: Year over Year passenger enplanements for Northwest in March 2008 were up 5.6%. There were four (4) flight cancellations for the month.

US Airways: US Airways' March 2008 passenger enplanements represent a 0.2% increase. There were five (5) flight cancellations for the month.

# Monthly Traffic Report

## Asheville Regional Airport

### March 2008



Category	Mar 2008	Mar 2007	Percentage Change	*CYTD-2008	*CYTD-2007	Percentage Change	*MOV12-2008	*MOV12-2007	Percentage Change
<b>Passenger Traffic</b>									
Enplaned	20,128	20,891	-3.7%	55,201	54,708	0.9%	289,911	285,927	1.4%
Deplaned	<u>19,814</u>	<u>21,423</u>	-7.5%	<u>53,673</u>	<u>54,206</u>	-1.0%	<u>282,364</u>	<u>281,363</u>	0.4%
<b>Total</b>	<b>39,942</b>	<b>42,314</b>	<b>-5.6%</b>	<b>108,874</b>	<b>108,914</b>	<b>0.0%</b>	<b>572,275</b>	<b>567,290</b>	<b>0.9%</b>
<b>Aircraft Operations</b>									
Airlines	66	171	-61.4%	315	479	-34.2%	1,643	2,547	-35.5%
Commuter /Air Taxi	<u>1,383</u>	<u>1,443</u>	-4.2%	3,765	3,921	-4.0%	19,101	18,378	3.9%
<b>Subtotal</b>	<u>1,449</u>	<u>1,614</u>	-10.2%	<u>4,080</u>	<u>4,400</u>	-7.3%	<u>20,744</u>	<u>20,925</u>	-0.9%
General Aviation	4,385	4,288	2.3%	11,393	10,874	4.8%	58,820	51,785	13.6%
Military	<u>168</u>	<u>186</u>	-9.7%	<u>485</u>	<u>436</u>	11.2%	<u>2,432</u>	<u>2,387</u>	1.9%
<b>Subtotal</b>	<u>4,553</u>	<u>4,474</u>	1.8%	<u>11,878</u>	<u>11,310</u>	5.0%	<u>61,252</u>	<u>54,172</u>	13.1%
<b>Total</b>	<b>6,002</b>	<b>6,088</b>	<b>-1.4%</b>	<b>15,958</b>	<b>15,710</b>	<b>1.6%</b>	<b>81,996</b>	<b>75,097</b>	<b>9.2%</b>
<b>Fuel Gallons</b>									
100LL	16,437	21,963	-25.2%	46,274	52,239	-11.4%	281,523	276,537	1.8%
Jet A (GA)	92,333	110,435	-16.4%	230,826	287,626	-19.7%	1,684,609	1,572,214	7.1%
<b>Subtotal</b>	<u>108,770</u>	<u>132,398</u>	-17.8%	<u>277,100</u>	<u>339,865</u>	-18.5%	<u>1,966,132</u>	<u>1,848,751</u>	6.3%
Jet A (A/L)	<u>211,401</u>	<u>218,090</u>	-3.1%	<u>620,381</u>	<u>619,501</u>	0.1%	<u>2,812,860</u>	<u>2,876,818</u>	-2.2%
<b>Total</b>	<b>320,171</b>	<b>350,488</b>	<b>-8.6%</b>	<b>897,481</b>	<b>959,366</b>	<b>-6.5%</b>	<b>4,778,992</b>	<b>4,725,569</b>	<b>1.1%</b>

\*CYTD = Calendar Year to Date and \*Mov12 = Moving Twelve Months.

Thursday, May 01, 2008

# Airline Flight Completions Asheville Regional Airport March 2008



Airline	Scheduled Flights	Field	Cancellations Due To			Total Cancellations	Percentage of Completed Flights
			Mechanical	Weather	Other		
Continental Airlines	62	0	0	1	0	1	98.4%
Delta Air Lines	229	0	1	2	1	4	98.3%
Northwest Airlines	88	0	4	0	0	4	95.5%
US Airways	222	0	2	3	0	5	97.7%
<b>Total</b>	601	0	7	6	1	14	97.7%

Thursday, May 01, 2008

# Airline Enplanements, Seats, and Load Factors

## Asheville Regional Airport

### March 2008

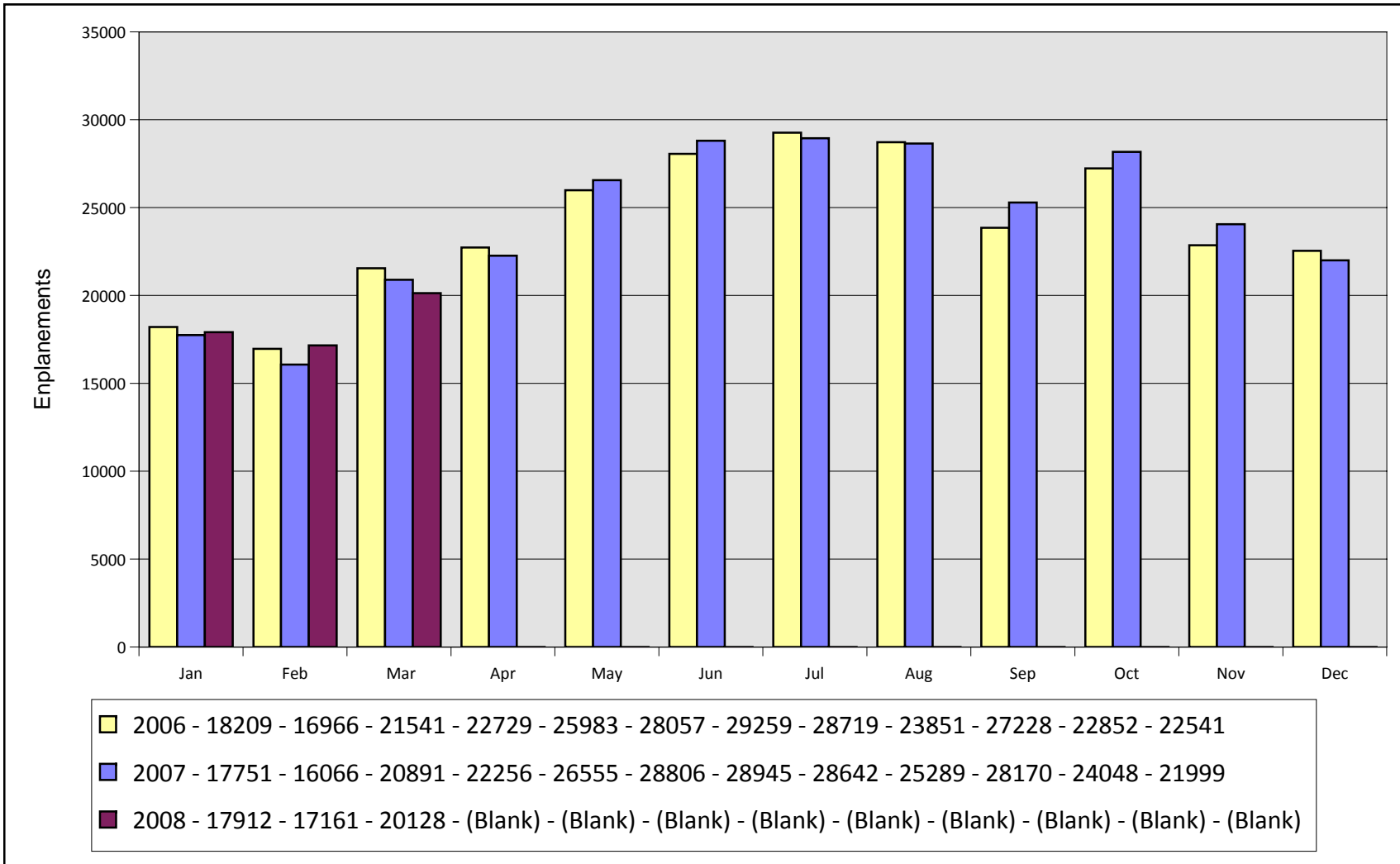


	Mar 2008	Mar 2007	Percentage Change	*CYTD-2008	*CYTD-2007	Percentage Change
<b>Continental Airlines</b>						
Enplanements	2,032	1,920	5.8%	5,506	5,291	4.1%
Seats	2,605	2,610	-0.2%	8,025	8,525	-5.9%
Load Factor	78.0%	73.6%	6.0%	68.6%	62.1%	10.5%
<b>Delta Air Lines</b>						
Enplanements	8,047	9,083	-11.4%	22,077	23,435	-5.8%
Seats	10,855	12,088	-10.2%	30,579	34,315	-10.9%
Load Factor	74.1%	75.1%	-1.3%	72.2%	68.3%	5.7%
<b>Northwest Airlines</b>						
Enplanements	2,718	2,575	5.6%	7,575	6,277	20.7%
Seats	4,200	4,272	-1.7%	12,500	12,276	1.8%
Load Factor	64.7%	60.3%	7.4%	60.6%	51.1%	18.5%
<b>US Airways</b>						
Enplanements	7,331	7,313	0.2%	20,043	19,705	1.7%
Seats	9,620	10,913	-11.8%	28,700	29,748	-3.5%
Load Factor	76.2%	67.0%	13.7%	69.8%	66.2%	5.4%
<b>Totals</b>						
Enplanements	20,128	20,891	-3.7%	55,201	54,708	0.9%
Seats	27,280	29,883	-8.7%	79,804	84,864	-6.0%
Load Factor	73.8%	69.9%	5.5%	69.2%	64.5%	7.3%

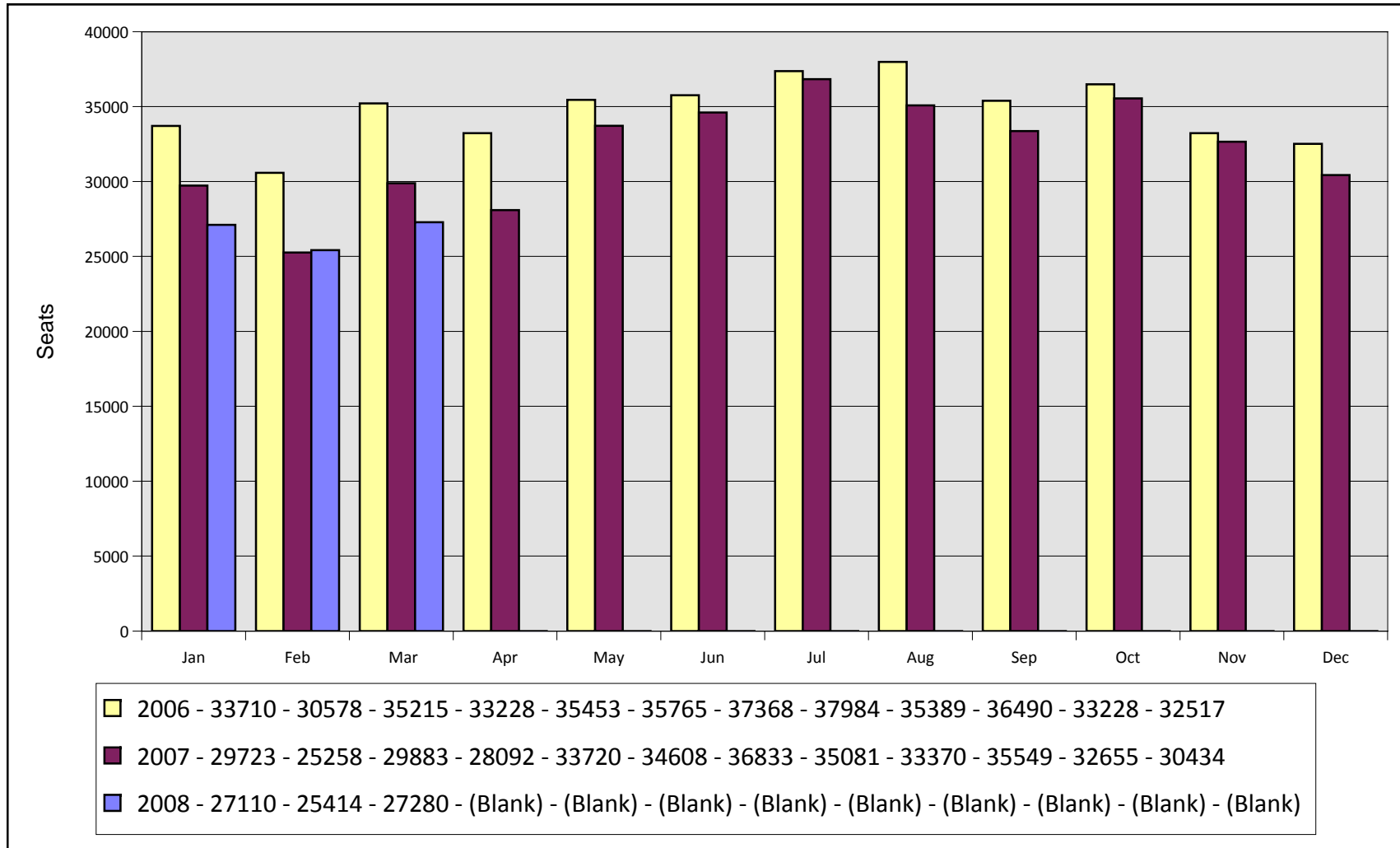
Thursday, May 01, 2008

\*CTYD = Calendar Year to Date and \*Mov12 = Moving Twelve Months.

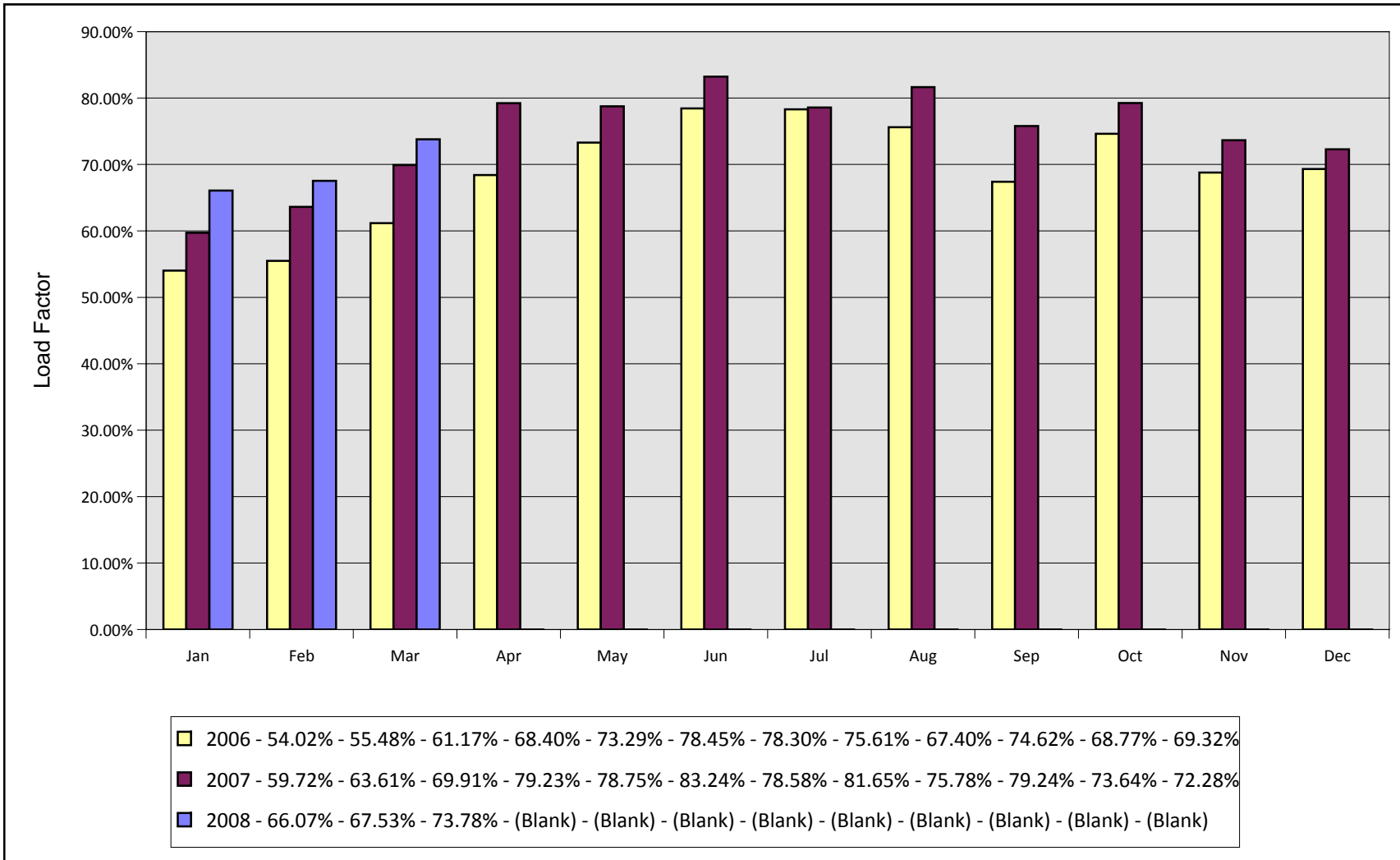
# Monthly Enplanements By Year Asheville Regional Airport



# Monthly Seats By Year Asheville Regional Airport

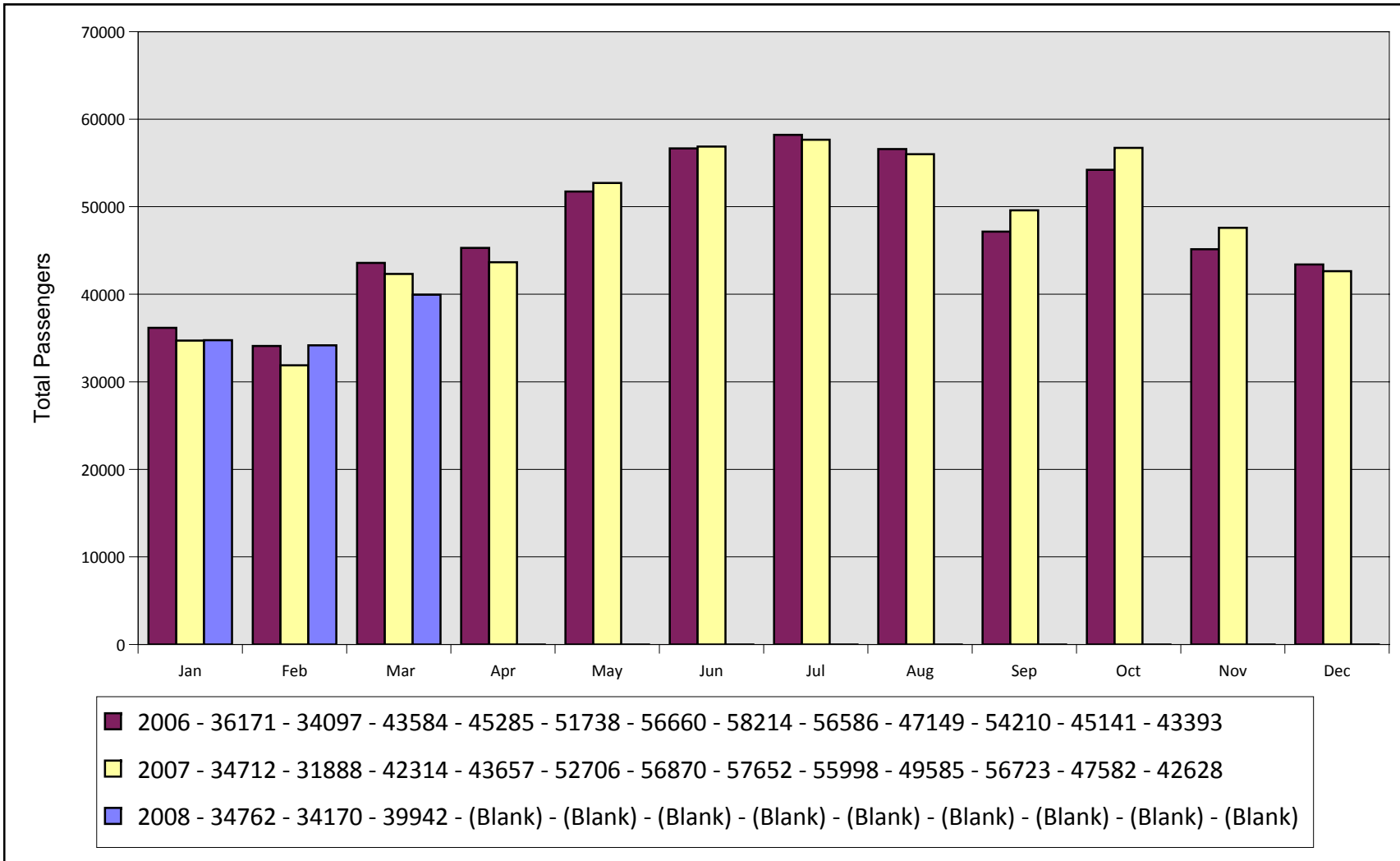


# Monthly Load Factors By Year Asheville Regional Airport



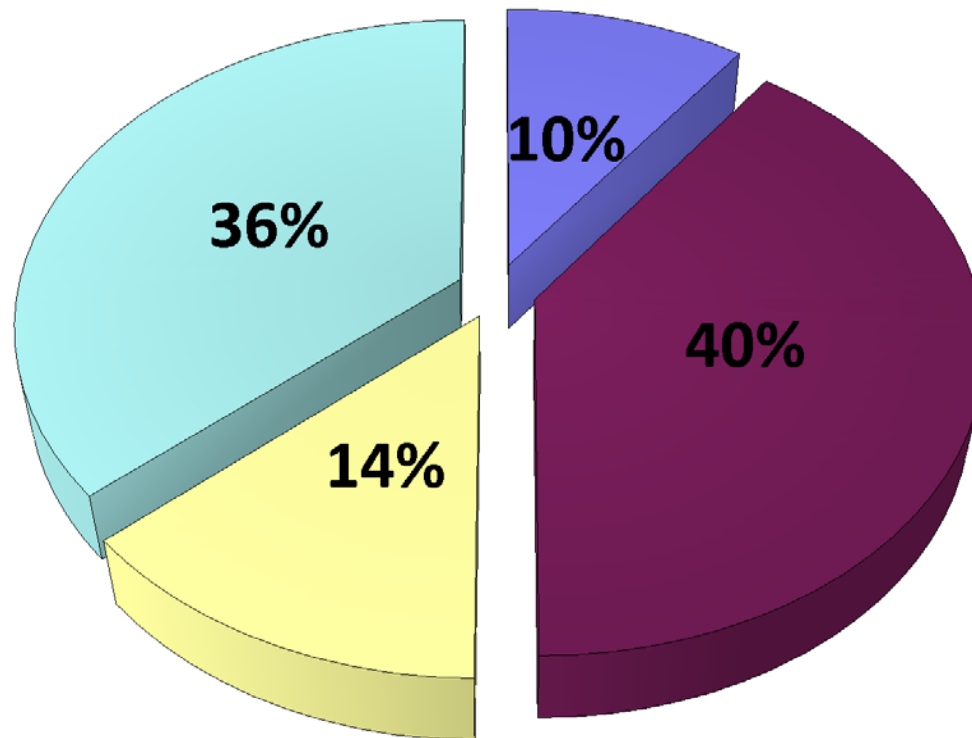


# Total Monthly Passengers By Year Asheville Regional Airport

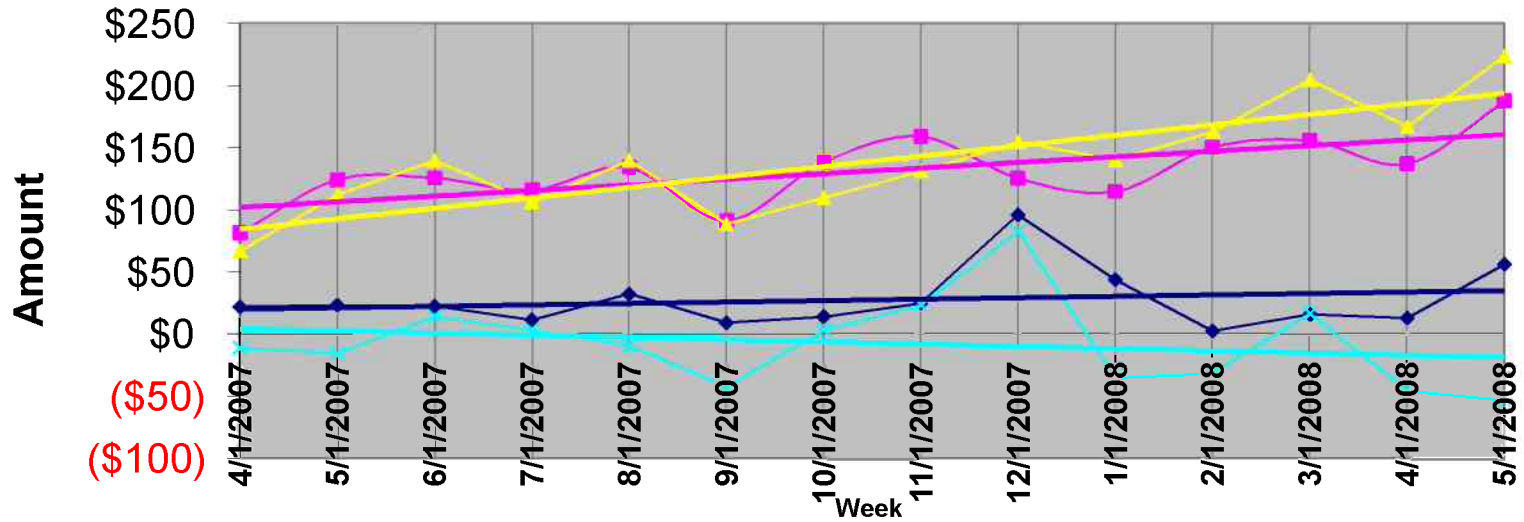


# Airline Market Share Analysis (Enplanements) Asheville Regional Airport

Report Period From March 2008 Through March 2008



## AVL Average Airfare Differences 21 Day Advance Purchase, 3 Day Stay



**Asheville Regional Airport**  
**Sample airfares as of 05/01/08**  
**21 Day Advance Purchase, 3 day Stay**

		<u>Difference in Fares</u>								
		ASHEVILLE	GREENVILLE	CHARLOTTE	ATLANTA	TRI-CITIES	GREENVILLE	CHARLOTTE	ATLANTA	TRI-CITIES
ABQ	Albuquerque	\$585	\$413	\$422	\$417	\$678	\$172	\$163	\$168	(\$93)
ATL	Atlanta	\$541	\$407	\$167		\$391	\$134	\$374	\$541	\$150
AUS	Austin	\$542	\$473	\$347	\$333	\$511	\$69	\$195	\$209	\$31
BWI	Baltimore	\$519	\$462	\$197	\$189	\$617	\$57	\$322	\$330	(\$98)
BOS	Boston	\$247	\$307	\$263	\$239	\$519	(\$60)	(\$16)	\$8	(\$272)
ORD	Chicago	\$306	\$470	\$237	\$219	\$355	(\$164)	\$69	\$87	(\$49)
CVG	Cincinnati	\$288	\$397	\$458	\$365	\$308	(\$109)	(\$170)	(\$77)	(\$20)
CLE	Cleveland	\$544	\$335	\$351	\$249	\$537	\$209	\$193	\$295	\$7
DFW	Dallas	\$491	\$474	\$297	\$239	\$603	\$17	\$194	\$252	(\$112)
DEN	Denver	\$467	\$533	\$353	\$259	\$534	(\$66)	\$114	\$208	(\$67)
DTW	Detroit	\$341	\$343	\$247	\$219	\$301	(\$2)	\$94	\$122	\$40
FLL	Fort Lauderdale	\$524	\$507	\$227	\$189	\$425	\$17	\$297	\$335	\$99
RSW	Ft. Myers	\$530	\$589	\$268	\$208	\$654	(\$59)	\$262	\$322	(\$124)
BDL	Hartford	\$412	\$194	\$335	\$407	\$579	\$218	\$77	\$5	(\$167)
IAH	Houston	\$395	\$579	\$254	\$234	\$534	(\$184)	\$141	\$161	(\$139)
IND	Indianapolis	\$428	\$276	\$188	\$219	\$601	\$152	\$240	\$209	(\$173)
JAX	Jacksonville	\$540	\$348	\$247	\$179	\$606	\$192	\$293	\$361	(\$66)
MCI	Kansas City	\$563	\$440	\$318	\$219	\$480	\$123	\$245	\$344	\$83
LAS	Las Vegas	\$636	\$416	\$355	\$323	\$571	\$220	\$281	\$313	\$65
LAX	Los Angeles	\$590	\$456	\$414	\$334	\$678	\$134	\$176	\$256	(\$88)
MHT	Manchester	\$247	\$485	\$390	\$341	\$561	(\$238)	(\$143)	(\$94)	(\$314)
MEM	Memphis	\$391	\$196	\$283	\$154	\$523	\$195	\$108	\$237	(\$132)
MIA	Miami	\$560	\$522	\$257	\$199	\$547	\$38	\$303	\$361	\$13
MKE	Milwaukee	\$601	\$324	\$236	\$197	\$556	\$277	\$365	\$404	\$45
MSP	Minneapolis/Saint Paul	\$406	\$629	\$287	\$219	\$598	(\$223)	\$119	\$187	(\$192)
BNA	Nashville	\$569	\$339	\$268	\$361	\$681	\$230	\$301	\$208	(\$112)
MSY	New Orleans	\$541	\$354	\$308	\$199	\$409	\$187	\$233	\$342	\$132
LGA	New York	\$654	\$400	\$247	\$247	\$592	\$254	\$407	\$407	\$62
EWR	Newark	\$380	\$386	\$264	\$406	\$510	(\$6)	\$116	(\$26)	(\$130)
MCO	Orlando	\$351	\$294	\$187	\$149	\$510	\$57	\$164	\$202	(\$159)
PHL	Philadelphia	\$252	\$336	\$256	\$219	\$278	(\$84)	(\$4)	\$33	(\$26)
PHX	Phoenix	\$544	\$476	\$398	\$279	\$685	\$68	\$146	\$265	(\$141)
PIT	Pittsburgh	\$385	\$386	\$264	\$219	\$433	(\$1)	\$121	\$166	(\$48)
PDX	Portland	\$752	\$460	\$410	\$548	\$737	\$292	\$342	\$204	\$15
PVD	Providence	\$247	\$217	\$382	\$374	\$558	\$30	(\$135)	(\$127)	(\$311)

**Asheville Regional Airport**  
**Sample airfares as of 05/01/08**  
**21 Day Advance Purchase, 3 day Stay**

RDU	Raleigh/Durham	\$530	\$566	\$350	\$189	\$596	(\$36)	\$180	\$341	(\$66)
RIC	Richmond	\$645	\$452	\$356	\$189	\$439	\$193	\$289	\$456	\$206
STL	Saint Louis	\$478	\$554	\$278	\$199	\$461	(\$76)	\$200	\$279	\$17
SLC	Salt Lake City	\$705	\$737	\$246	\$413	\$611	(\$32)	\$459	\$292	\$94
SAT	San Antonio	\$509	\$528	\$269	\$276	\$561	(\$19)	\$240	\$233	(\$52)
SAN	San Diego	\$719	\$527	\$459	\$363	\$745	\$192	\$260	\$356	(\$26)
SFO	San Francisco	\$606	\$691	\$423	\$394	\$646	(\$85)	\$183	\$212	(\$40)
SRQ	Sarasota/Bradenton	\$722	\$398	\$278	\$199	\$559	\$324	\$444	\$523	\$163
SEA	Seattle	\$575	\$444	\$433	\$359	\$681	\$131	\$142	\$216	(\$106)
SYR	Syracuse	\$379	\$344	\$248	\$392	\$560	\$35	\$131	(\$13)	(\$181)
TPA	Tampa	\$478	\$298	\$269	\$199	\$430	\$180	\$209	\$279	\$48
YYZ	Toronto	\$563	\$493	\$398	\$491	\$635	\$70	\$165	\$72	(\$72)
DCA	Washington DC	\$356	\$494	\$308	\$219	\$580	(\$138)	\$48	\$137	(\$224)
IAD	Washington DC	\$373	\$494	\$308	\$219	\$580	(\$121)	\$65	\$154	(\$207)
PBI	West Palm Beach	\$644	\$595	\$257	\$197	\$557	\$49	\$387	\$447	\$87
							\$56	\$188	\$224	(\$53) <b>Average Fare difference</b>

\*These sample airfares were available 05/01/08, based on a 21 day advance purchase and a 3 day stay. Other restrictions may apply. To obtain the most up-to-date pricing information for your travel needs, please contact your professional travel agent or visit the following web sites: [www.continental.com](http://www.continental.com); [www.delta.com](http://www.delta.com); [www.nwa.com](http://www.nwa.com); [www.usairways.com](http://www.usairways.com); [www.travelocity.com](http://www.travelocity.com); [www.orbitz.com](http://www.orbitz.com); or [www.expedia.com](http://www.expedia.com). Airfares are subject to change without notice - and lower airfares are often not available on all dates. Please see our "special airfares" section on our web site for any last minute airfare specials. Sample airfares will be updated each Tuesday.

**Blue highlighted numbers represent fare differentials in excess of \$35 for GSP, \$70 for CLT, \$100 for ATL, and \$35 for TRI.**

**Asheville Regional Airport**  
**Sample airfares as of 05/01/08**  
**0 Day Advance Purchase, 3 day Stay**

		Difference in Fares								
		ASHEVILLE	GREENVILLE	CHARLOTTE	ATLANTA	TRI-CITIES	GREENVILLE	CHARLOTTE	ATLANTA	TRI-CITIES
ABQ	Albuquerque	\$1,188	\$1,202	\$1,291	\$584	\$1,130	(\$14)	(\$103)	\$604	\$58
ATL	Atlanta	\$811	\$764	\$511		\$748	\$47	\$300	\$811	\$63
AUS	Austin	\$933	\$1,088	\$645	\$788	\$1,170	(\$155)	\$288	\$145	(\$237)
BWI	Baltimore	\$588	\$1,171	\$462	\$470	\$1,282	(\$583)	\$126	\$118	(\$694)
BOS	Boston	\$542	\$748	\$415	\$585	\$992	(\$206)	\$127	(\$43)	(\$450)
ORD	Chicago	\$683	\$908	\$398	\$585	\$891	(\$225)	\$285	\$98	(\$208)
CVG	Cincinnati	\$873	\$942	\$1,066	\$691	\$738	(\$69)	(\$193)	\$182	\$135
CLE	Cleveland	\$885	\$728	\$640	\$667	\$943	\$157	\$245	\$218	(\$58)
DFW	Dallas	\$852	\$831	\$854	\$541	\$901	\$21	(\$2)	\$311	(\$49)
DEN	Denver	\$423	\$1,625	\$998	\$332	\$803	(\$1,202)	(\$575)	\$91	(\$380)
DTW	Detroit	\$863	\$784	\$545	\$424	\$889	\$79	\$318	\$439	(\$26)
FLL	Fort Lauderdale	\$980	\$828	\$466	\$292	\$661	\$152	\$514	\$688	\$319
RSW	Ft. Myers	\$911	\$839	\$428	\$541	\$995	\$72	\$483	\$370	(\$84)
BDL	Hartford	\$667	\$245	\$689	\$829	\$802	\$422	(\$22)	(\$162)	(\$135)
IAH	Houston	\$639	\$980	\$740	\$490	\$920	(\$341)	(\$101)	\$149	(\$281)
IND	Indianapolis	\$657	\$235	\$399	\$377	\$891	\$422	\$258	\$280	(\$234)
JAX	Jacksonville	\$890	\$1,036	\$746	\$417	\$933	(\$146)	\$144	\$473	(\$43)
MCI	Kansas City	\$1,323	\$1,248	\$458	\$497	\$1,204	\$75	\$865	\$826	\$119
LAS	Las Vegas	\$946	\$694	\$594	\$683	\$623	\$252	\$352	\$263	\$323
LAX	Los Angeles	\$932	\$974	\$360	\$499	\$919	(\$42)	\$572	\$433	\$13
MHT	Manchester	\$504	\$846	\$652	\$1,028	\$768	(\$342)	(\$148)	(\$524)	(\$264)
MEM	Memphis	\$1,272	\$990	\$775	\$549	\$836	\$282	\$497	\$723	\$436
MIA	Miami	\$1,193	\$898	\$417	\$517	\$1,125	\$295	\$776	\$676	\$68
MKE	Milwaukee	\$758	\$417	\$304	\$375	\$999	\$341	\$454	\$383	(\$241)
MSP	Minneapolis/Saint Paul	\$801	\$1,147	\$680	\$497	\$1,429	(\$346)	\$121	\$304	(\$628)
BNA	Nashville	\$832	\$736	\$464	\$809	\$902	\$96	\$368	\$23	(\$70)
MSY	New Orleans	\$866	\$1,159	\$458	\$457	\$704	(\$293)	\$408	\$409	\$162
LGA	New York	\$1,398	\$1,048	\$448	\$585	\$1,239	\$350	\$950	\$813	\$159
EWR	Newark	\$1,096	\$961	\$708	\$624	\$1,073	\$135	\$388	\$472	\$23
MCO	Orlando	\$961	\$628	\$248	\$252	\$765	\$333	\$713	\$709	\$196
PHL	Philadelphia	\$897	\$305	\$522	\$651	\$310	\$592	\$375	\$246	\$587
PHX	Phoenix	\$1,227	\$1,540	\$458	\$645	\$943	(\$313)	\$769	\$582	\$284
PIT	Pittsburgh	\$611	\$638	\$327	\$457	\$521	(\$27)	\$284	\$154	\$90
PDX	Portland	\$1,511	\$1,197	\$491	\$798	\$1,325	\$314	\$1,020	\$713	\$186
PVD	Providence	\$564	\$245	\$933	\$832	\$310	\$319	(\$369)	(\$268)	\$254

**Asheville Regional Airport  
Sample airfares as of 05/01/08  
0 Day Advance Purchase, 3 Day Stay**

RDU	Raleigh/Durham	\$935	\$1,197	\$787	\$457	\$859	(\$262)	\$148	\$478	\$76
RIC	Richmond	\$1,080	\$946	\$580	\$270	\$1,064	\$134	\$500	\$810	\$16
STL	Saint Louis	\$1,056	\$764	\$723	\$391	\$1,110	\$292	\$333	\$665	(\$54)
SLC	Salt Lake City	\$1,191	\$1,229	\$674	\$595	\$873	(\$38)	\$517	\$596	\$318
SAT	San Antonio	\$933	\$1,216	\$754	\$788	\$1,170	(\$283)	\$179	\$145	(\$237)
SAN	San Diego	\$817	\$816	\$458	\$418	\$1,108	\$1	\$359	\$399	(\$291)
SFO	San Francisco	\$764	\$953	\$458	\$604	\$834	(\$189)	\$306	\$160	(\$70)
SRQ	Sarasota/Bradenton	\$1,068	\$1,043	\$914	\$491	\$957	\$25	\$154	\$577	\$111
SEA	Seattle	\$786	\$797	\$731	\$587	\$1,065	(\$11)	\$55	\$199	(\$279)
SYR	Syracuse	\$547	\$777	\$678	\$1,033	\$866	(\$230)	(\$131)	(\$486)	(\$319)
TPA	Tampa	\$859	\$952	\$458	\$469	\$730	(\$93)	\$401	\$390	\$129
YYZ	Toronto	\$1,572	\$1,369	\$789	\$920	\$1,462	\$203	\$783	\$652	\$110
DCA	Washington DC	\$363	\$1,109	\$607	\$373	\$1,006	(\$746)	(\$244)	(\$10)	(\$643)
IAD	Washington DC	\$604	\$1,109	\$659	\$648	\$1,006	(\$505)	(\$55)	(\$44)	(\$402)
PBI	West Palm Beach	\$1,507	\$814	\$540	\$495	\$884	\$693	\$967	\$1,012	\$623
							(\$11)	\$295	\$345	(\$30) Average Fare difference

\*These sample airfares were available 05/01/08, based on a 0 day advance purchase and a 3 day stay. Other restrictions may apply. To obtain the most up-to-date pricing information for your travel needs, please contact your professional travel agent or visit the following web sites: [www.continental.com](http://www.continental.com); [www.delta.com](http://www.delta.com); [www.nwa.com](http://www.nwa.com); [www.usairways.com](http://www.usairways.com); [www.travelocity.com](http://www.travelocity.com); [www.orbitz.com](http://www.orbitz.com); or [www.expedia.com](http://www.expedia.com). Airfares are subject to change without notice - and lower airfares are often not available on all dates. Please see our "special airfares" section on our web site for any last minute airfare specials. Sample airfares will be updated each Tuesday.

**Blue highlighted numbers represent fare differentials in excess of \$35 for GSP, \$70 for CLT, \$100 for ATL, and \$35 for TRI.**

**ASHEVILLE REGIONAL AIRPORT  
EXPLANATION OF EXTRAORDINARY VARIANCES  
MONTH ENDED MARCH 31, 2008  
(Month 08 of FY-2008)**

**SUMMARY**

Operating Revenue (page 4 of 10) for the month of March was \$602,453; an increase of almost 2.56% over the budgeted amount. Year-to-date Operating Revenue is 10.45% over the budget figure. Operating Expenses (page 4 of 10) were 5.72% lower than the budget amount on a year-to-date basis. Passenger Facility Charges earned were \$119,914. Income from Investments was \$33,505 for the month of March. Operating Revenue from operations and land use before depreciation was \$140,181 for the month of March 2008.

**REVENUES**

Revenues from the Terminal, Fixed Based Operations, Parking Lot and Land Use were higher than the budget amount. Operating Revenue for the month of March 2008 was \$13,100 less than the amount of Operating Revenue at the Airport for the month of March 2007 (\$615,527).

Year to date Operating Revenue is \$5,839,371; an increase of 10.39% over the budget figure.

**EXPENSES**

Total Operating Expenses for the month were .92% higher than the budget amount and 5.72% under budget on a year to date basis. Expenses were over \$4,207 higher than the budget estimate for the period. Operating Expenses were over \$3,027 less than that reported for the same period in the previous year.

**STATEMENT OF NET ASSETS**

Unrestricted Net Assets increased almost \$1,101,998 over the month of February 2008. This is primarily due to a grant reimbursement for expenses on the Terminal Project.

Unrestricted Cash and Cash Equivalents increased over \$1,780,796 as reimbursements were issued from the Rental Car Facility Project Fund to the Authority operating account.



**ASHEVILLE REGIONAL AIRPORT  
INVESTMENT AND INTEREST INCOME SUMMARY  
For the Month Ended March 2008**

<u>Institution:</u>	<u>Date of Purchase</u>	<u>Date of Maturity</u>	<u>Interest Rate</u>	<u>Investment Amount</u>	<u>Monthly Interest</u>
Bank of America			2.96%	\$ 2,121,640	\$ 4,943
Petty Cash				100	
NC Capital Trust				2,743,217	8,045
Restricted Cash:					
PFC Revenue Account			1.87%	829,239	1,020
DPS Checking-Restricted			0.05%	(24)	0
Wachovia-Gov. Advantage Acct.			2.45%	2,303,249	4,418
Rental Car Project Fund			2.82%	2,064,371	4,897
CFC Revenue			0.00%	147,313	248
<b><u>Commercial Paper:</u></b>					
Neptune Funding	11/16/07	03/13/08	5.47%		5,971
General Electric	01/30/08	04/29/08	3.02%	992,625	2,567
Neptune Funding	03/13/08	06/13/08	3.01%	992,461	1,475
<b>Total</b>				<b><u>\$ 12,194,191</u></b>	<b><u>\$ 33,585</u></b>

**Investment Diversification:**

1.BANKS	25.41%
2.CAP.TRUST	22.50%
3.GOV.ADV.ACCT.	35.82%
4.COM.PAPER	16.28%
5. FED. AGY	0%
	<u>100.00%</u>

**ASHEVILLE REGIONAL AIRPORT  
STATEMENT OF CHANGES IN FINANCIAL POSITION  
For the Month Ended March 2008**

	<u>Month</u>	<u>Prior Period</u>
<b>Cash and Investments Beginning of Period (Month 3-01-08, Prior Period 2-01-08)</b>	<b>\$ 11,635,641</b>	<b>\$ 12,011,507</b>
Net Income before Contributions	108,416	(6,823)
Depreciation	246,624	246,624
Decrease/(Increase) in Receivables	66,681	88,806
Increase/(Decrease) in Payables	398,540	17,353
Decrease/(Increase) in Prepaid Expenses	19,474	(23,530)
Decrease/(Increase) in Long Term Assets	(929,513)	(598,140)
Contributed Capital	769,852	-
Carryback of Payments to Prior Period	(121,524)	(100,156)
Bonds Payable - Current		
Bonds Payable - Non-Current		
<b>Increase(Decrease) in Cash</b>	<u><b>558,550</b></u>	<u><b>(375,866)</b></u>
<b>Cash and Investments End of Period (03/31/2008)</b>	<u><b>\$ 12,194,191</b></u>	<u><b>\$ 11,635,641</b></u>

Asheville Regional Airport Authority  
 Summary  
 Statement of Revenues and Expenditures  
 For the Nine Months Ending March 31, 2008

	<u>March Actual</u>	<u>March BUDGET</u>	<u>Variance %</u>	<u>YTD Actual</u>	<u>YTD BUDGET</u>	<u>Variance %</u>	<u>ANNUAL BUDGET</u>
<b>Operating Revenue:</b>							
Space Rent	\$118,165	\$139,278	(15.16%)	\$1,410,941	\$1,253,505	12.56%	\$1,671,340
Concessions	16,434	11,021	49.12%	146,059	99,187	47.26%	132,250
Parking	184,496	179,167	2.97%	1,709,956	1,612,500	6.04%	2,150,000
Rental Car Income	145,260	122,670	18.42%	1,239,034	1,104,034	12.23%	1,472,045
Landing Fees	44,143	54,667	(19.25%)	544,637	492,000	10.70%	656,000
Fixed Base Operators	62,748	54,044	16.11%	533,749	486,394	9.74%	648,525
Land Use Fees	15,073	14,125	6.71%	118,269	127,126	(6.97%)	169,502
Other Operating Income	16,134	12,449	29.60%	136,726	112,042	22.03%	149,390
<b>Total Operating Revenue</b>	<u>\$602,453</u>	<u>\$587,421</u>	<u>2.56%</u>	<u>\$5,839,371</u>	<u>\$5,286,788</u>	<u>10.45%</u>	<u>\$7,049,052</u>
<b>Operating Expenses:</b>							
Salaries	\$151,028	\$154,932	(2.52%)	\$1,448,988	\$1,535,218	(5.62%)	\$1,999,867
Salary Related Expenses	61,360	70,092	(12.46%)	576,249	698,422	(17.49%)	908,699
Professional Services	51,908	17,638	194.30%	208,167	187,738	10.88%	240,650
Travel and Training	10,899	13,977	(22.02%)	88,781	125,794	(29.42%)	167,725
Communications	4,017	3,648	10.12%	36,075	32,535	10.88%	43,430
Insurance	20,321	17,292	17.52%	178,191	155,625	14.50%	207,500
Utilities	32,695	30,750	6.33%	303,550	276,750	9.68%	369,000
Contracted Services	47,802	71,481	(33.13%)	483,223	644,826	(25.06%)	859,768
Repairs and Maintenance	20,829	26,027	(19.97%)	328,565	233,535	40.69%	311,614
Advertising	14,911	20,510	(27.30%)	161,466	177,344	(8.95%)	238,450
Supplies	46,474	31,693	46.64%	284,027	277,935	2.19%	379,303
<b>Total Operating Expenses</b>	<u>\$462,244</u>	<u>\$458,040</u>	<u>0.92%</u>	<u>\$4,097,282</u>	<u>\$4,345,722</u>	<u>(5.72%)</u>	<u>\$5,726,006</u>
<b>Revenue from Operations and Land Use before Depreciation</b>	<u>\$140,209</u>	<u>\$129,381</u>	<u>8.37%</u>	<u>\$1,742,089</u>	<u>\$941,066</u>	<u>85.12%</u>	<u>\$1,323,046</u>

Asheville Regional Airport Authority  
Statement of Revenue, Expenses and Changes in Net Assets

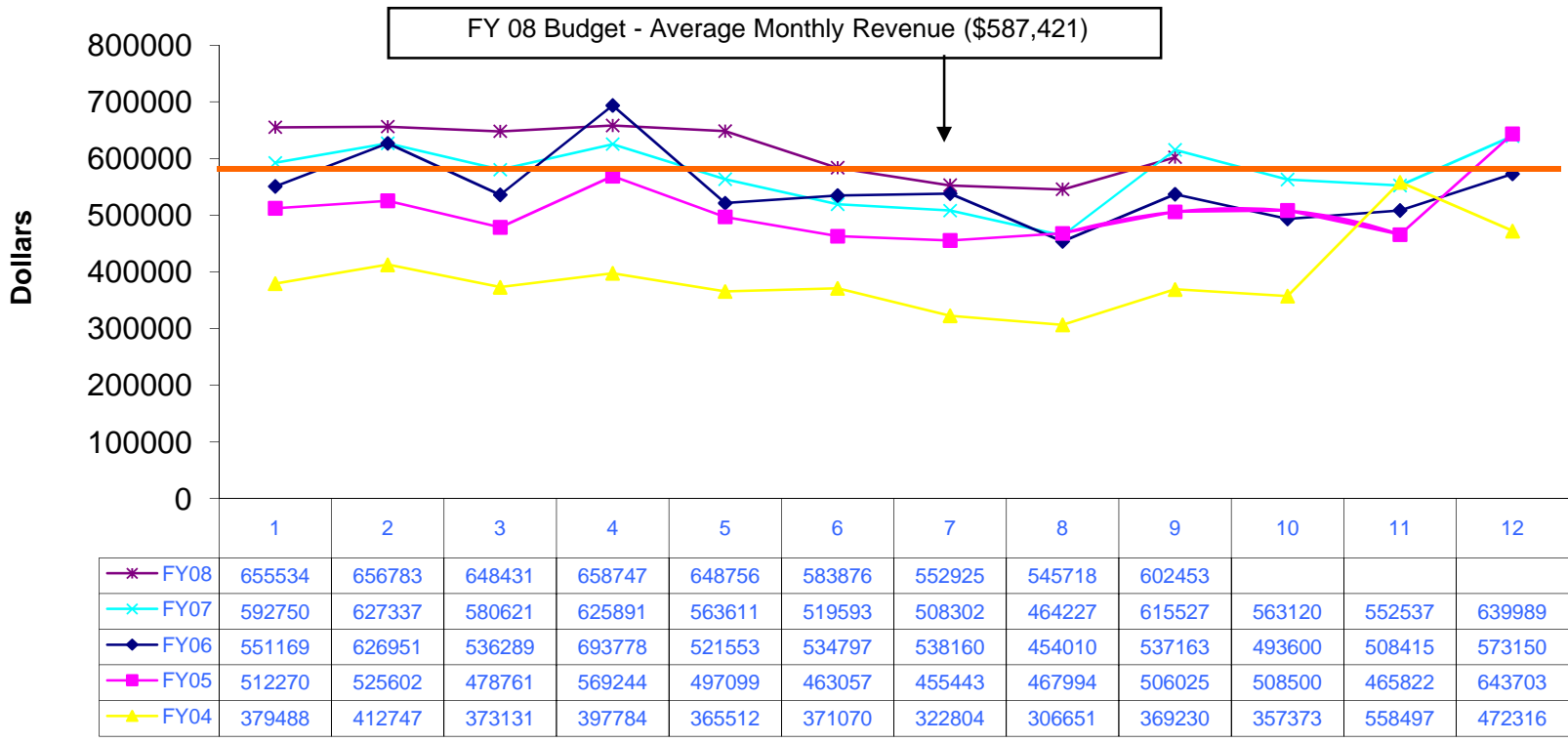
For the Nine Months Ending March 31, 2008

	<u>March Actual</u>	<u>March Budget</u>	<u>Variance %</u>	<u>YTD Actual</u>	<u>YTD Budget</u>	<u>Variance %</u>	<u>Annual Budget</u>
<b>Operating Revenue:</b>							
Terminal	\$131,906	\$127,615	3.36%	\$2,034,405	\$1,148,536	77.13%	\$1,531,383
Airfield	89,364	116,983	(23.61%)	935,793	1,052,843	(11.12%)	1,403,790
Hangar	62,748	54,044	16.11%	533,748	486,394	9.74%	648,525
Parking Lot/Roadway	303,336	275,604	10.06%	2,215,590	2,480,439	(10.68%)	3,307,252
Land Use Fees	15,099	13,175	14.60%	119,835	118,576	1.06%	158,102
<b>Total Operating Revenue</b>	<u>\$602,453</u>	<u>\$587,421</u>	<u>2.56%</u>	<u>\$5,839,371</u>	<u>\$5,286,788</u>	<u>10.45%</u>	<u>\$7,049,052</u>
<b>Operating Expenses:</b>							
Administrative	\$114,688	\$121,987	(5.98%)	\$2,061,458	\$1,833,506	12.43%	\$2,205,630
Terminal	217,703	210,217	3.56%	1,122,435	1,379,692	(18.65%)	2,010,344
Airfield	106,658	100,767	5.85%	617,007	906,901	(31.97%)	1,209,202
Hangar				9,942			
Parking Lot	23,195	24,454	(5.15%)	286,440	220,088	30.15%	293,450
Land Use Expenses		615	(100.00%)		5,535	(100.00%)	7,380
<b>Total Operating Expenses</b>	<u>\$462,244</u>	<u>\$458,040</u>	<u>0.92%</u>	<u>\$4,097,282</u>	<u>\$4,345,722</u>	<u>(5.72%)</u>	<u>\$5,726,006</u>
<b>Operating Revenue before Depreciation</b>							
	\$140,209	\$129,381	8.37%	\$1,742,089	\$941,066	85.12%	\$1,323,046
Depreciation	246,624	247,359	(0.30%)	2,222,672	2,226,227	(0.16%)	2,968,302
<b>Operating Income(Loss) Before Non-Operating Revenue and Expenses</b>							
	(\$106,415)	(\$117,978)	(9.80%)	(\$480,583)	(\$1,285,161)	(62.61%)	(\$1,645,256)
<b>Non-Operating Revenue and Expense</b>							
Customer Facility Charges	61,440	62,500	(1.70%)	599,935	562,500	6.66%	750,000
Passenger Facility Charges	119,914	100,000	19.91%	839,856	900,000	(6.68%)	1,200,000
Interest Revenue	33,505	37,125	(9.75%)	436,566	334,125	30.66%	445,500
Sale of Assets				60		0.00%	
<b>Non-Operating Revenue-Net</b>	<u>\$214,859</u>	<u>\$199,625</u>	<u>7.63%</u>	<u>\$1,876,417</u>	<u>\$1,796,625</u>	<u>4.44%</u>	<u>\$2,395,500</u>
<b>Income (Loss) Before Capital Contributions</b>							
	<u>\$108,444</u>	<u>\$81,647</u>	<u>32.82%</u>	<u>\$1,395,834</u>	<u>\$511,464</u>	<u>172.91%</u>	<u>\$750,244</u>
<b>Capital Contributions</b>							
	\$769,852	\$0	0.00%	\$1,172,627	\$0	0.00%	\$0
<b>Increase in Net Assets</b>							
	<u>\$878,296</u>	<u>\$81,647</u>	<u>975.72%</u>	<u>\$2,568,461</u>	<u>\$511,464</u>	<u>402.18%</u>	<u>\$750,244</u>

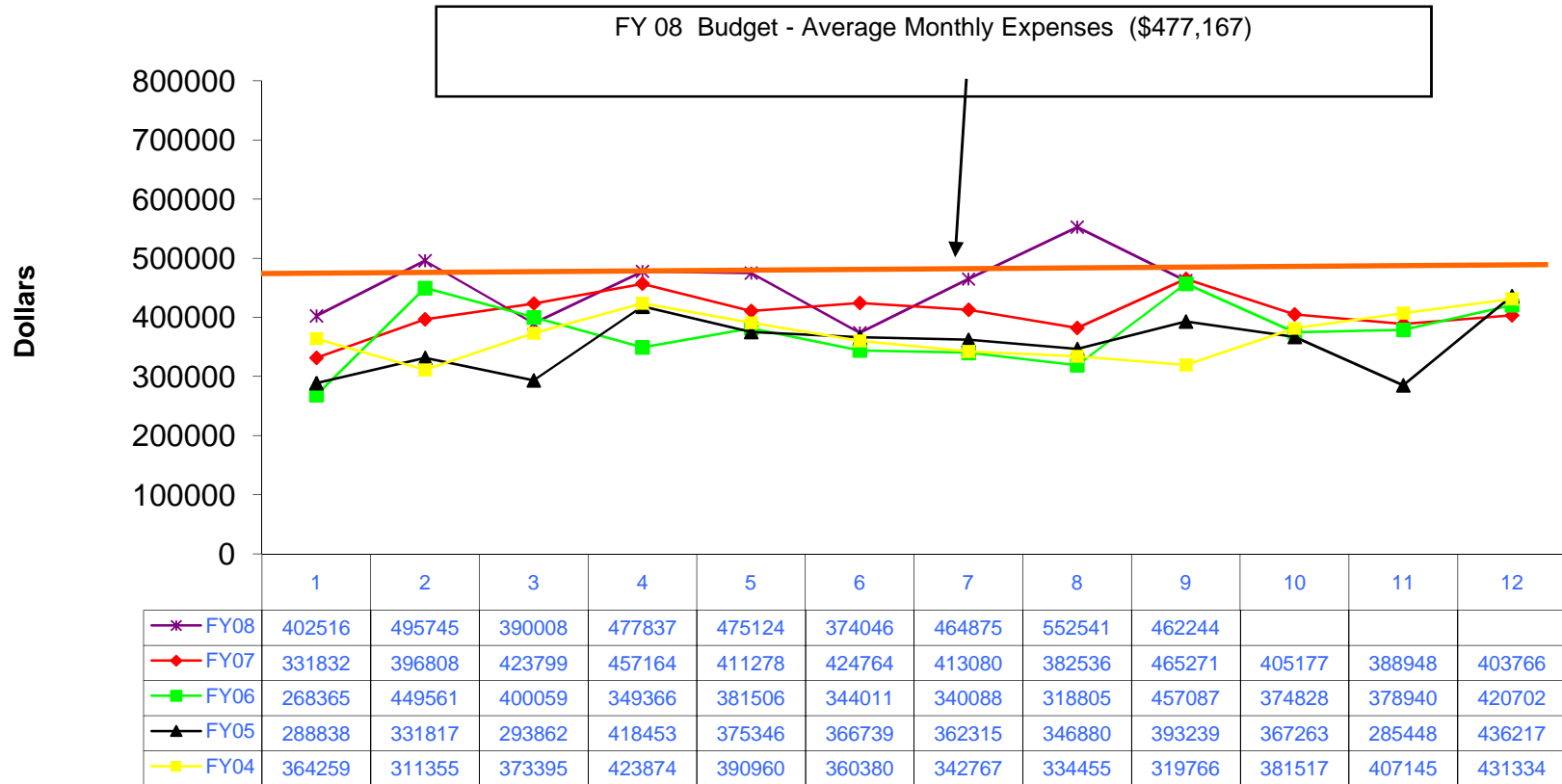
**ASHEVILLE REGIONAL AIRPORT AUTHORITY**  
**STATEMENT OF FINANCIAL POSITION**  
**March 31, 2008**

	<u>March</u>	<u>Last Month</u>
<b>ASSETS</b>		
<b>Current Assets</b>		
<b>Unrestricted Net Assets:</b>		
Cash and Cash Equivalents	\$4,864,956	\$3,084,160
Investments	1,985,086	1,975,023
Accounts Receivable	1,655,883	1,722,564
Prepaid Expenses	170,041	150,567
<b>Total Unrestricted Assets</b>	<u>8,675,966</u>	<u>6,932,314</u>
<b>Restricted Assets:</b>		
Capital Funds	73,286	13,604
Cash and Cash Equivalents	5,344,149	6,576,458
Receivables		
Passenger Facility Charge Funds: Receivables		
<b>Total Restricted Assets</b>	<u>5,417,435</u>	<u>6,590,062</u>
<b>Total Current Assets</b>	14,093,401	13,522,376
<b>Noncurrent Assets</b>		
Capital Assets	11,537,060	10,607,547
Property and Equipment - Net	39,314,072	39,560,695
<b>TOTAL ASSETS</b>	<u><u>\$64,944,533</u></u>	<u><u>\$63,690,619</u></u>
<b>LIABILITIES AND NET ASSETS</b>		
<b>Liabilities</b>		
Accounts Payable	<u>\$1,060,092</u>	<u>\$661,552</u>
<b>Total Payable from Unrestricted Assets</b>	1,060,092	661,552
<b>Payable from Restricted Assets:</b>		
Construction Contracts Payable	605,319	605,319
Construction Contract Retainages	155,790	155,790
Bonds Payable - Current Portion	88,374	88,374
<b>Total Payable From Restricted Assets</b>	<u>849,483</u>	<u>849,483</u>
<b>Total Current Liabilities</b>	1,909,575	1,511,035
<b>Non-Current Liabilities:</b>		
Rental Car Project Bond	<u>4,661,626</u>	<u>4,661,626</u>
<b>Total Non-Current Liabilities</b>	4,661,626	4,661,626
<b>Total Liabilities</b>	6,571,201	6,172,661
<b>Net Assets:</b>		
Invested in Capital Assets	39,314,072	39,560,696
<b>Unrestricted</b>	<u>19,059,260</u>	<u>17,957,262</u>
<b>Total Net Assets</b>	<u>58,373,332</u>	<u>57,517,958</u>
<b>TOTAL LIABILITIES</b>	<u><u>\$64,944,533</u></u>	<u><u>\$63,690,619</u></u>

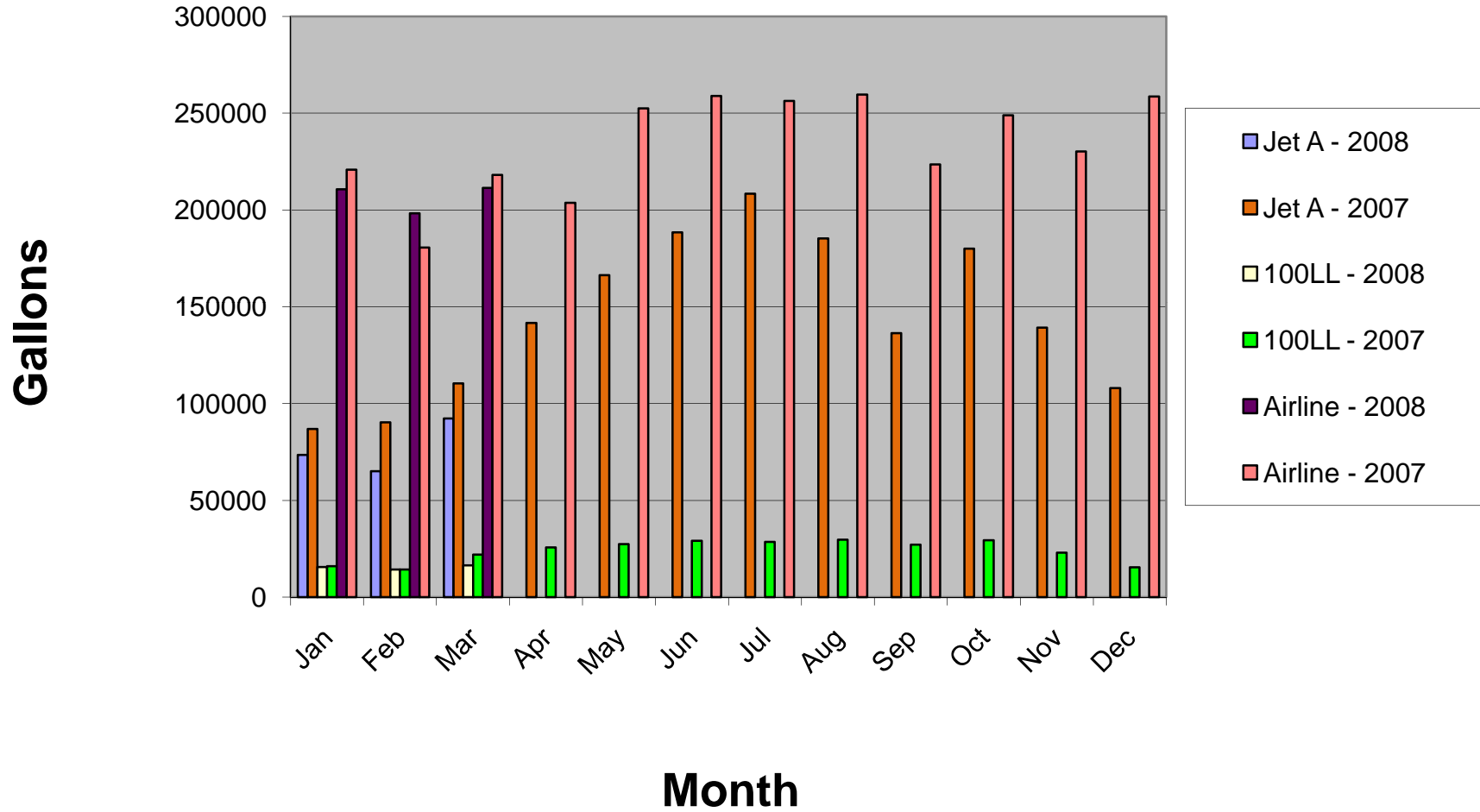
# ASHEVILLE REGIONAL AIRPORT Annual Operating Revenue by Month March 2008



# ASHEVILLE REGIONAL AIRPORT Annual Operating Expenses by Month March 2008

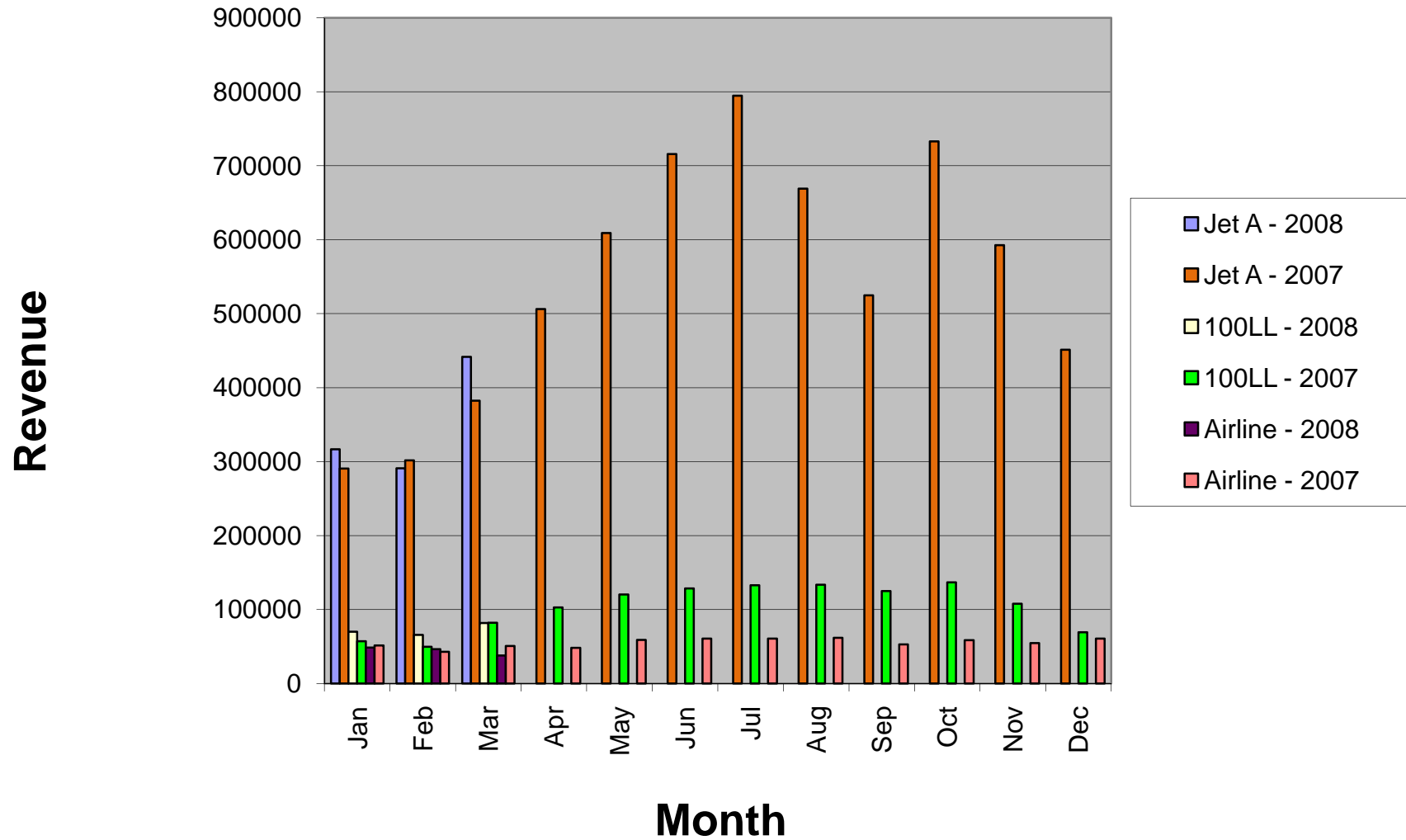


# AVL Fuels Sales - Gallons March 2008





## AVL Fuels Sales - Revenue March 2008





## MARKETING & PUBLIC RELATIONS REPORT

May, 2008

- Art in the Airport – exhibit Five began April 18, featuring 35 pieces of work by 8 artists.
- Completed artwork for Onstage; White Squirrel Festival; WNC Magazine; Artist recruiting poster for Art in the Airport program
- Movie poster images and frames have been received.
- Art in the Airport pedestals and vitrines for expansion of program to be received May 19; Additional lights also on order.
- Guest Services conducting research for Volunteer program.
- Business Travel Forum survey answers being input into database.
- New Ground Transportation card being designed.
- Asheville Tourists Summer Fly-away Promotion underway. Star 104.3 winner drawn for the first of three promotions; Winner for 105.9 the Mountain (Asheville Radio Group) selected April 29.
- Met with rep for the Relocation Guide.
- Attended Small Business Tabletop and Business After Hours – Asheville Chamber
- Attended the North Carolina Airports Association conference. Took photos.
- Website Statistics - Google Analytics: See attached data regarding April activity at [www.flyavl.com](http://www.flyavl.com)

# *Airportsurvey.com*



**AVL**

Airport Facilities Review For 1st Quarter 2008

# Welcome

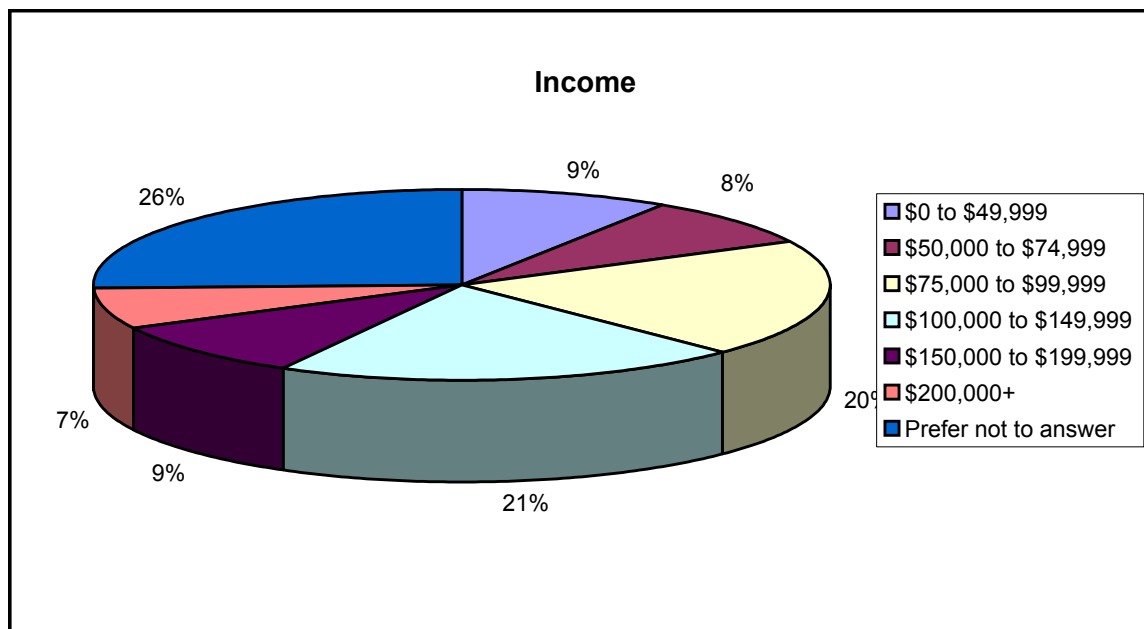
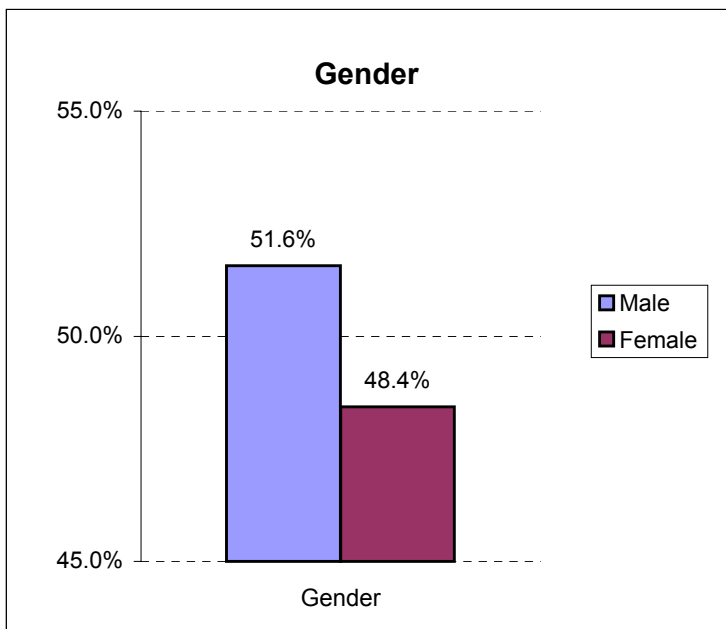
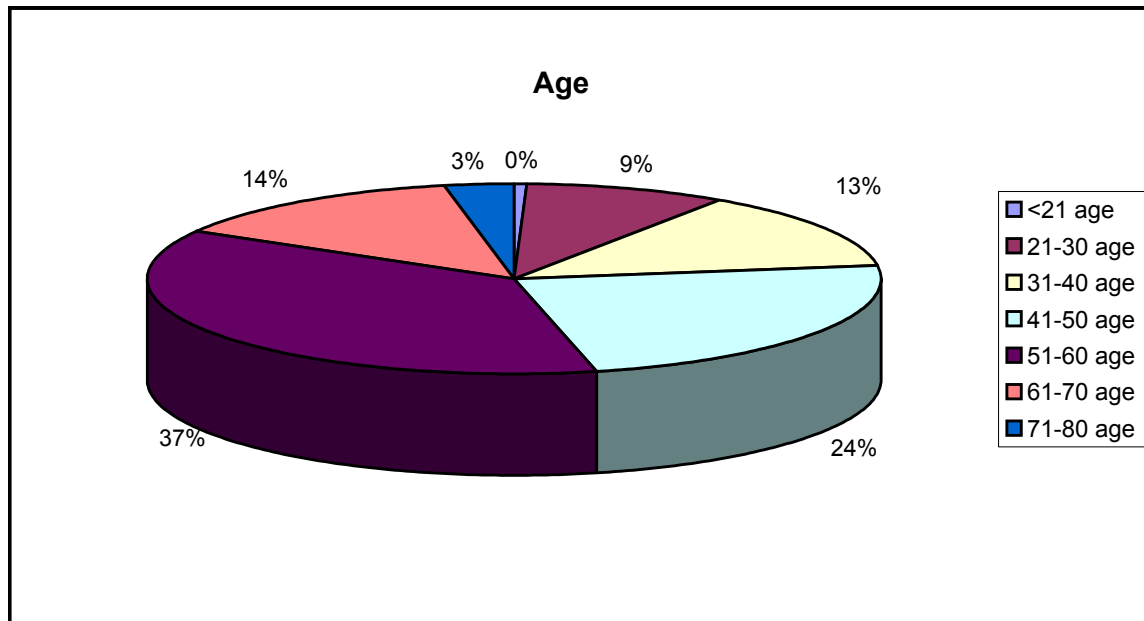
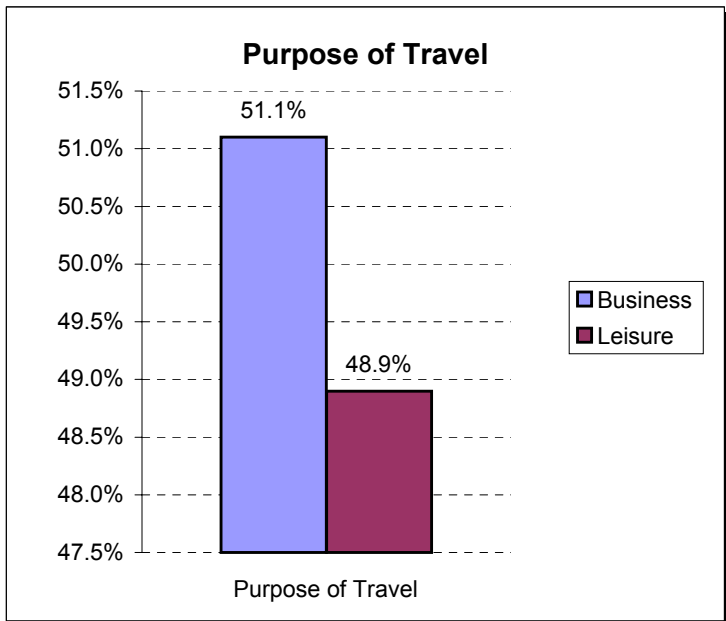
- Welcome to the Airportsurvey.com Airport Facilities Review for the recent quarter, a complimentary data set provided to Airportsurvey.com participating airports
- The following slides provide non-weighted scores and ratings based on an independent survey of air travelers
- Note that passenger responses are based on perception, rather than objective assessment
- Value Added Services available from Canmark include:
  - Report analysis
  - Statistical testing
  - Air carrier responses
  - Non-facility responses
  - Tailored comparison sets
  - Passenger demographics
  - Sample size enhancement
  - Targeted and customized reporting
  - Custom survey questions and content

No representations are made as to the completeness or accuracy of information contained herein. Airport facility raw data is available upon request.

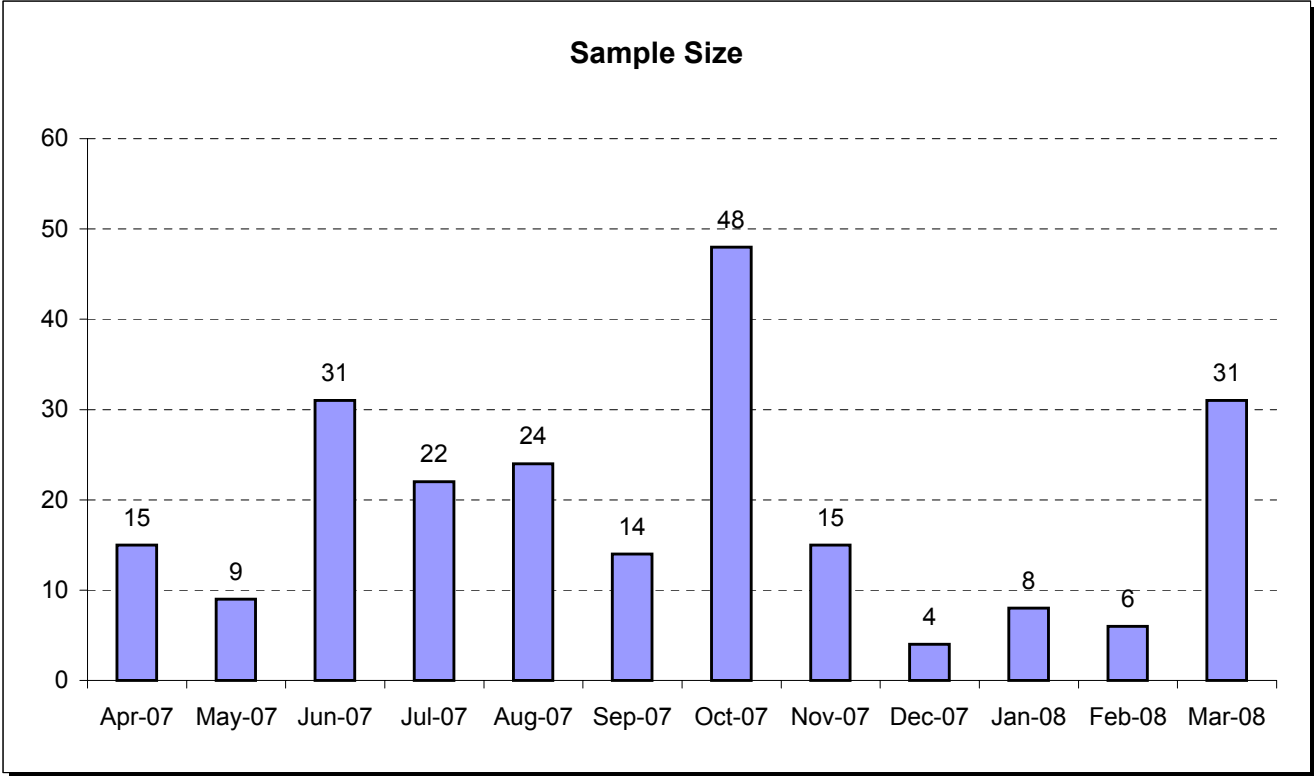
# Overview

- ***Airportsurvey.com*** is an ongoing, all-inclusive online passenger satisfaction survey program from Canmark Research Center
- Invitations to take the survey are distributed at select airports across the country
- Over 30 airports participate
- Each survey invitation card is single-use, and must reference an actual flight
- Survey distribution occurs approximately three days per month
- Response scale is 1 through 5: Poor, Fair, Good, Very Good, Excellent
- Survey participants have a chance to win round-trip airline tickets
- Response rates vary from 10% to 20% based on location
- Facilities attributes are scored according to check-in airport
- Airports are grouped into three tiers according to DOT originating revenue

# Passenger Demographics



# General Findings



Sample is clustered around airport invitation distribution dates.

Sample reflects passengers intercepted at arrival airports who rated check-in airport.

	AVL	Similar	+/-	Pct
Overall	4.31	4.05	0.26	6.0%
Availability of parking	4.09	3.94	0.15	3.7%
Cost of parking	3.52	3.36	0.16	4.7%
Clear, easy to follow signs	4.13	3.90	0.23	5.5%
Cleanliness	4.33	4.12	0.21	4.8%
Restrooms	4.19	3.99	0.20	4.7%
Concessions / restaurants	3.00	3.29	(0.28)	-9.4%
Transportation to your gate / concourse / terminal	3.93	3.76	0.17	4.2%
Security: Wait time at checkpoint	4.52	4.05	0.47	10.4%
Security: Professionalism of personnel	4.50	4.07	0.42	9.4%
Security: Confidence in airport security procedures	4.18	3.83	0.35	8.3%

Statistical (means) not performed on results

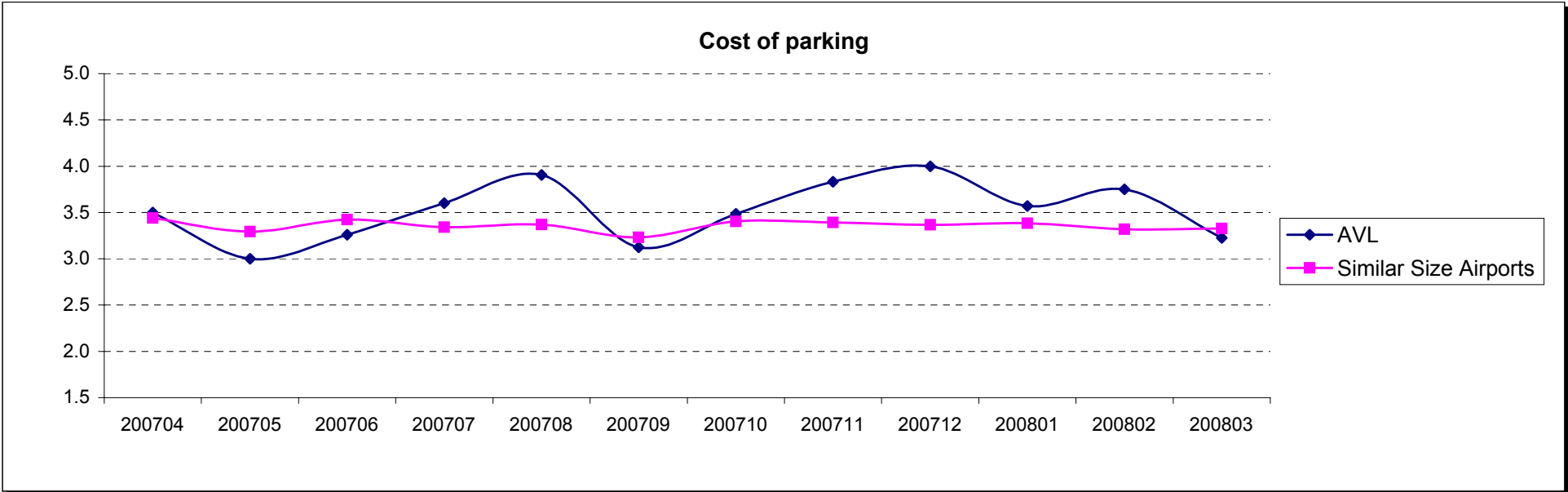
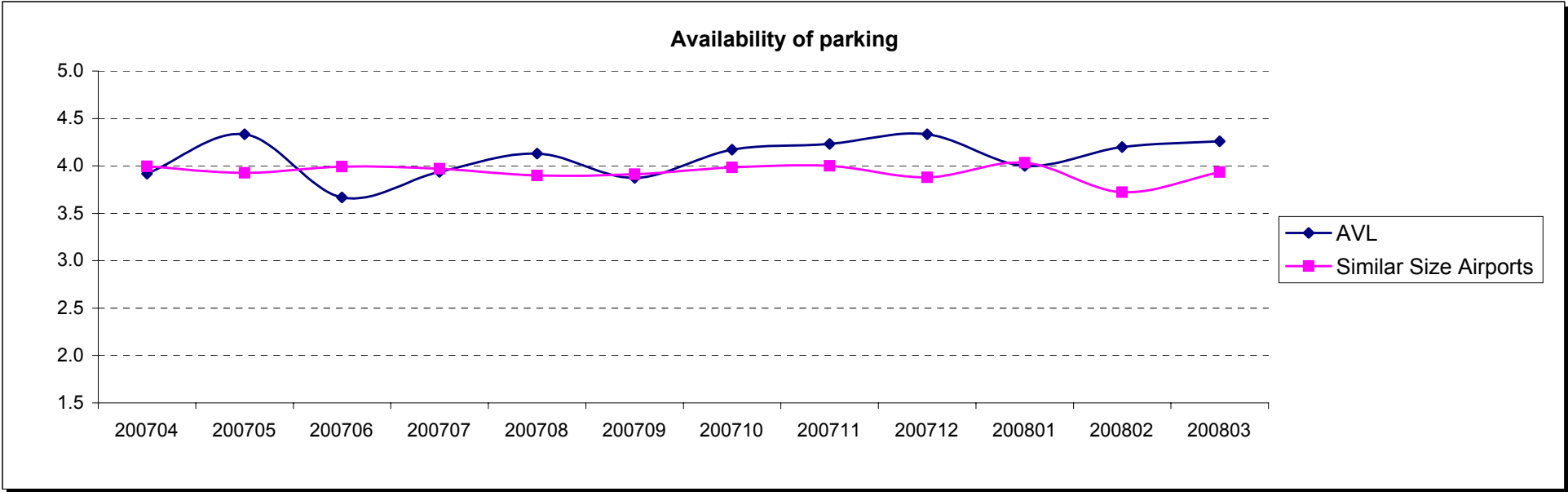
AVL Responses	227
---------------	-----

# Overall Satisfaction with Airport Facilities

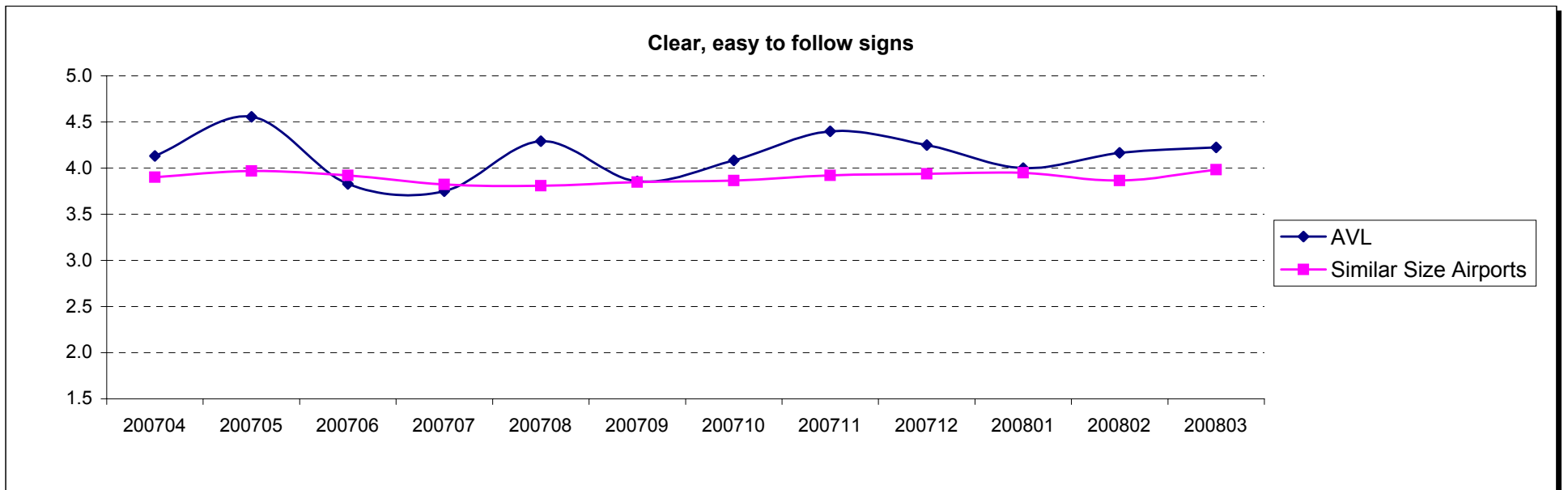
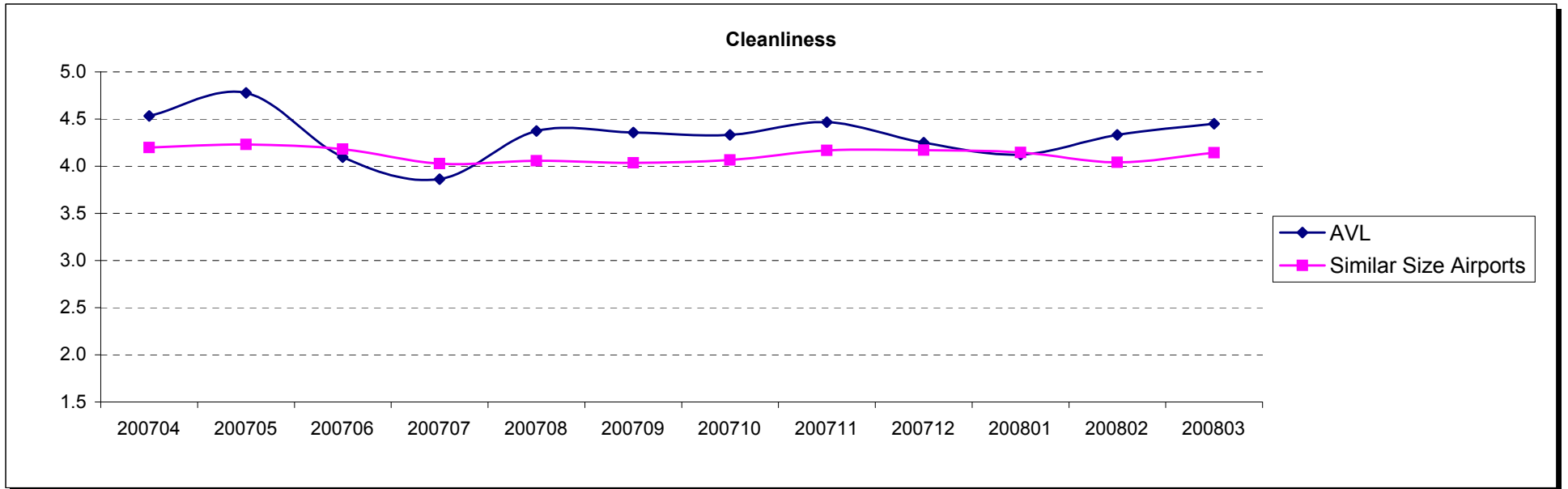




# Parking Satisfaction

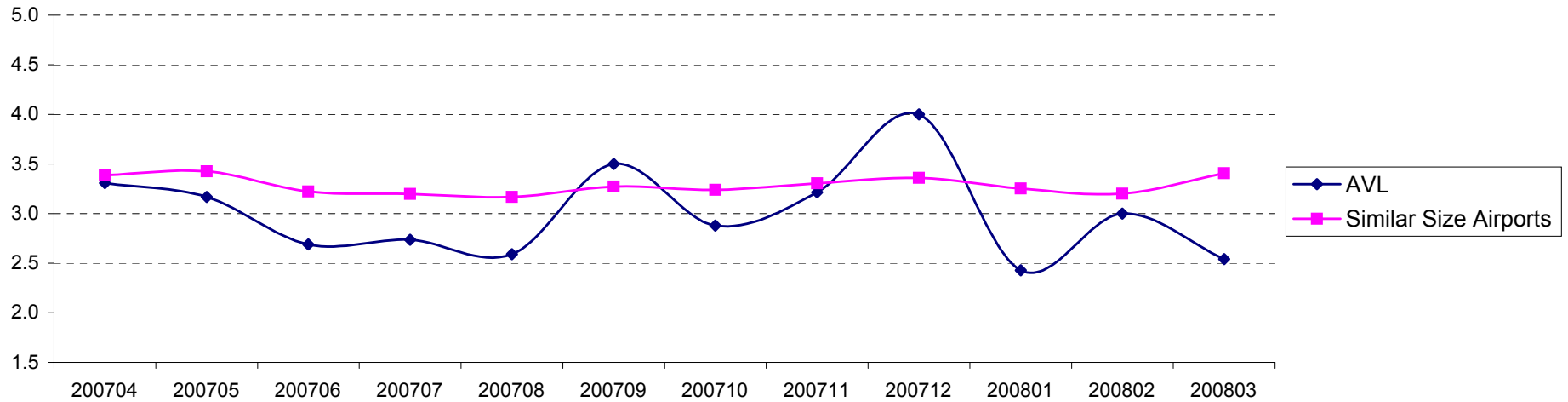


# Cleanliness and Signage

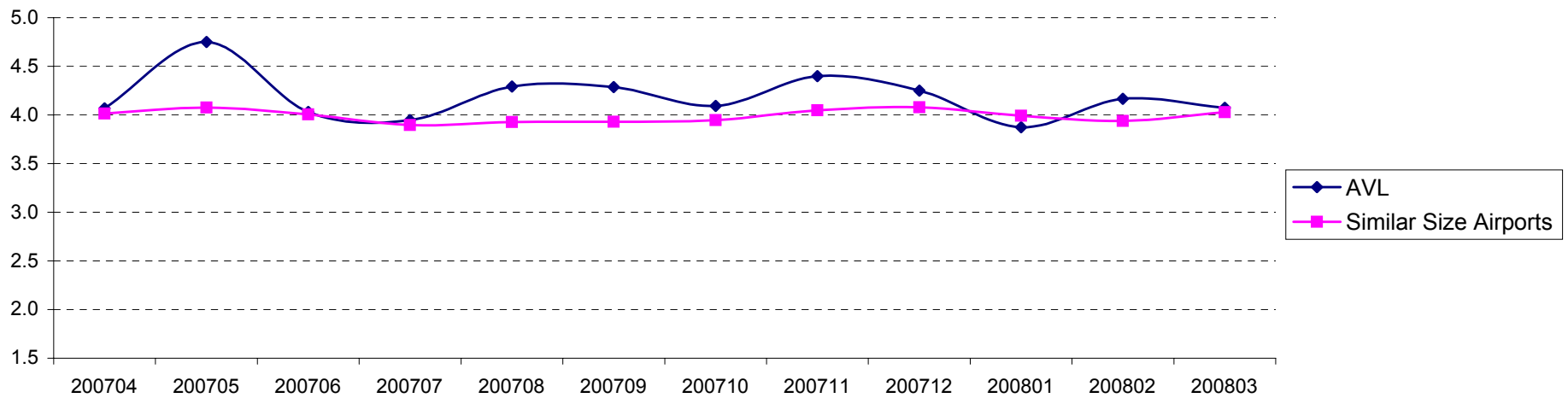


# Concessions and Restrooms

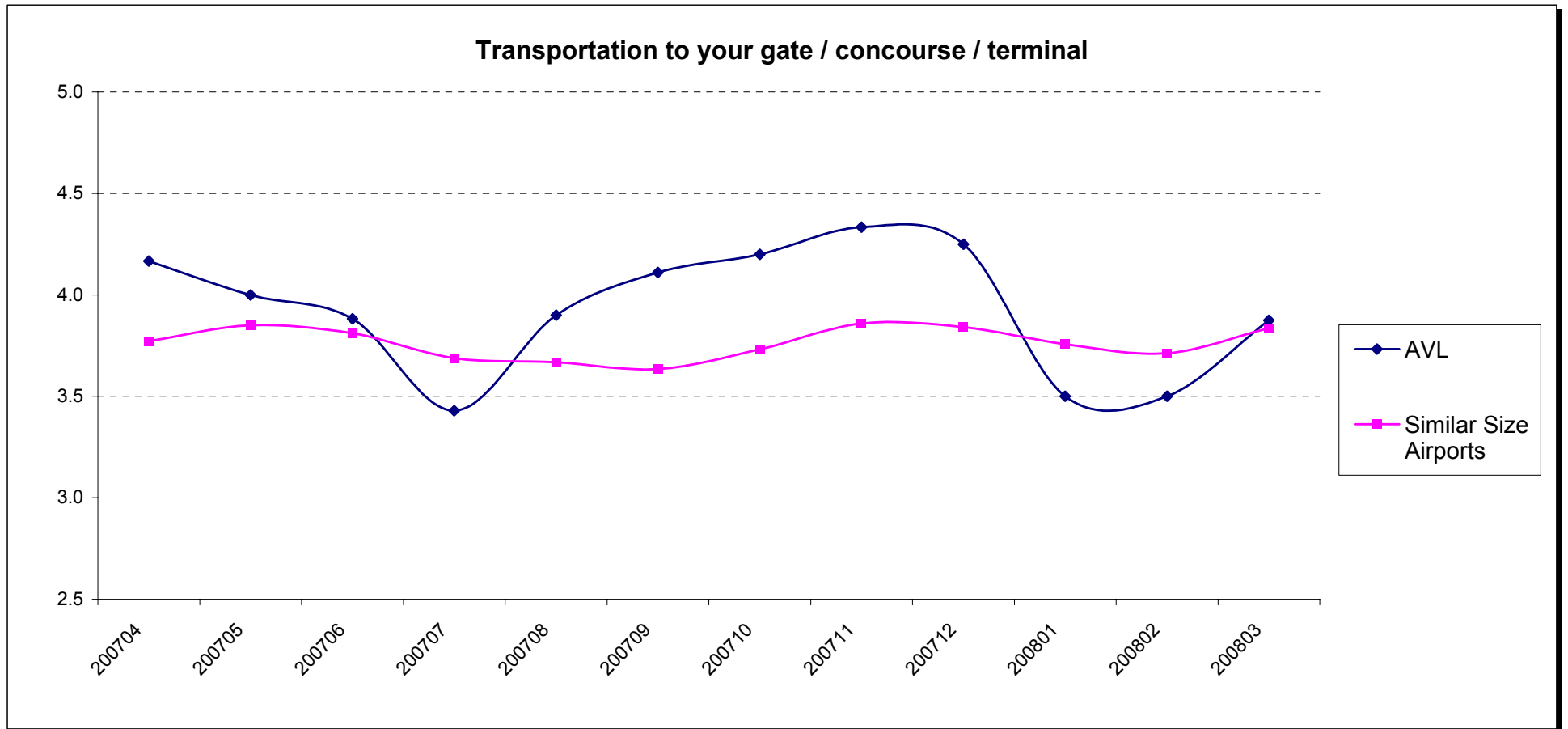
## Concessions / Restaurants



## Restrooms

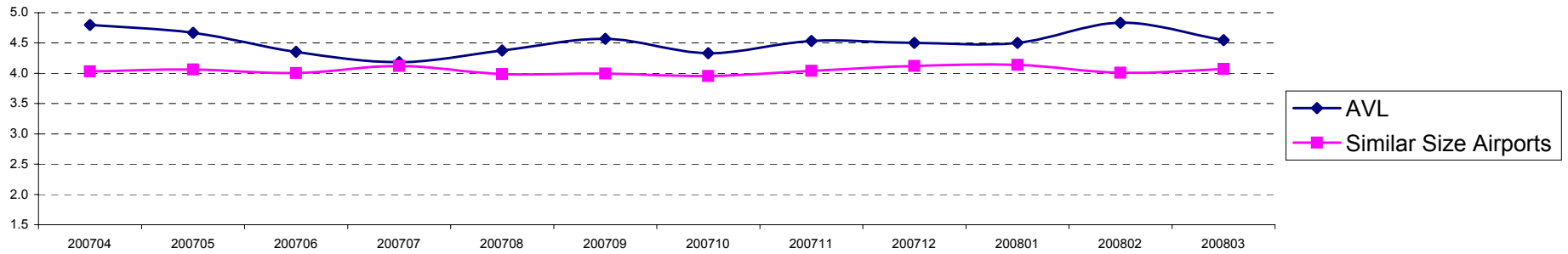


# Transportation to Departure Gate

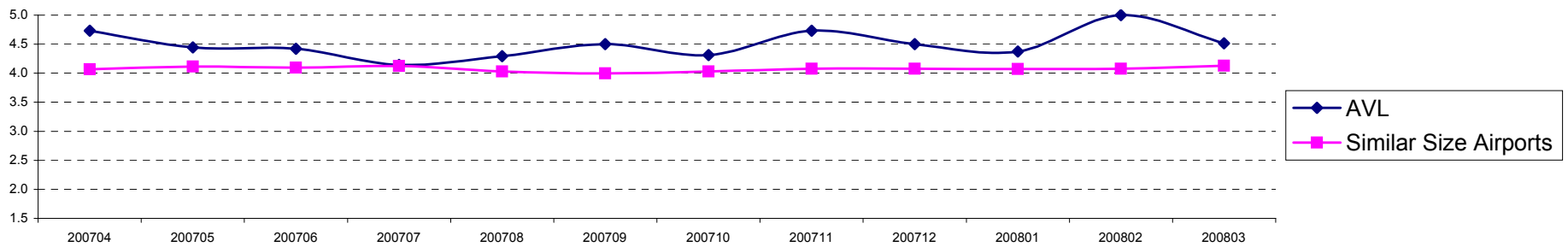


# Airport Security

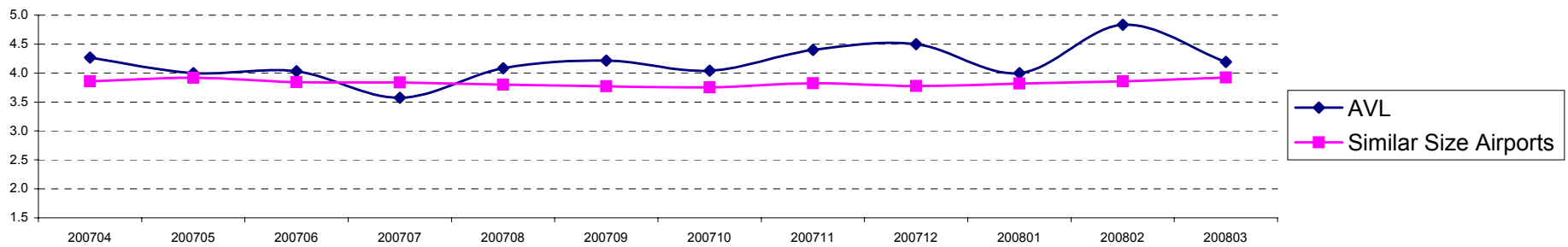
Security: Wait time at checkpoint



Security: Professionalism of security personnel



Security: Confidence in airport security procedures



# Appendix A - Geographic Breakdown of Respondents

AK	2	VA	3
AR	1	VT	1
CA	5	WA	1
CO	2	WI	3
CT	2	WY	2
DC	2		
FL	14		
IN	2		
KS	2		
LA	2		
MA	7		
MD	2		
MI	1		
MN	1		
NC	127		
NH	1		
NJ	3		
NM	1		
NY	7		
OH	1		
OR	1		
PA	2		
SC	4		
TN	1		
TX	5		
UT	1		

Note: Only includes passengers who indicated state of residence

## Appendix B - About Canmark

- Since 1993 Canmark Technologies has combined market research, programming, and technical expertise with thoughtful attention to client needs. Our problem-solving orientation has earned the respect of business clients and market researchers across North America.
- With an experienced staff of technical experts and project managers specializing in various fields of data capture and manipulation, programming and software development, web design and scripting, Canmark is able to leverage superior technology and know-how to support projects of all types and scope in the most cost-effective manner possible.
- Areas of expertise include survey development and delivery, project and data management services, requirements gathering, data sampling, paper and web forms management, custom lasering and printing, distribution logistics, data processing, custom programming for data cleansing, reporting and data analysis, and project consulting.
- We stand ready to meet your data needs, if you have any questions, please do not hesitate to contact us.

# Appendix C - Contacts

## North America & Europe

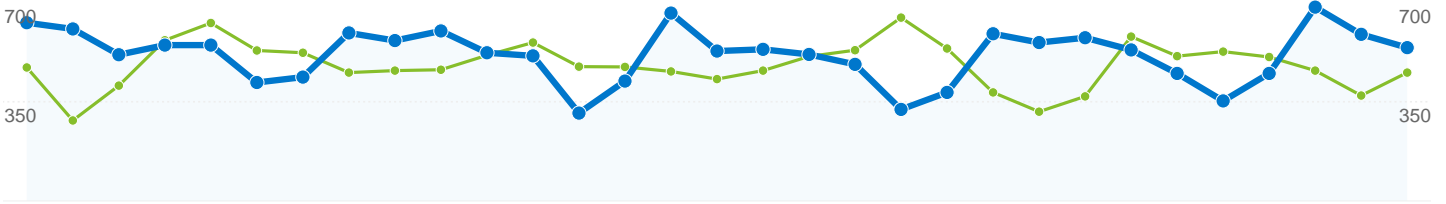
Paul Isaacs, President

[pisaacs@canmarktech.com](mailto:pisaacs@canmarktech.com)

1-877-441-2057, ext. 11







**Site Usage**

**15,990 Visits**  
 Previous: 14,859 (7.61%)

**36.32% Bounce Rate**  
 Previous: 35.28% (2.96%)

**60,513 Pageviews**  
 Previous: 60,358 (0.26%)

**00:04:42 Avg. Time on Site**  
 Previous: 00:06:19 (-25.49%)

**3.78 Pages/Visit**  
 Previous: 4.06 (-6.83%)

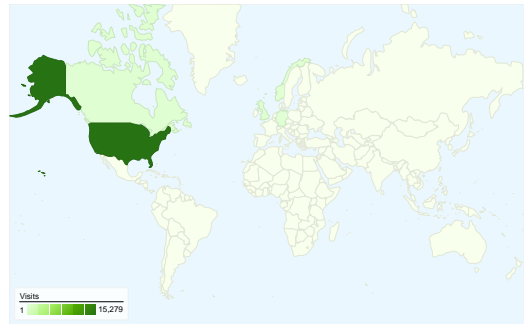
**66.00% % New Visits**  
 Previous: 66.92% (-1.37%)

**Visitors Overview**

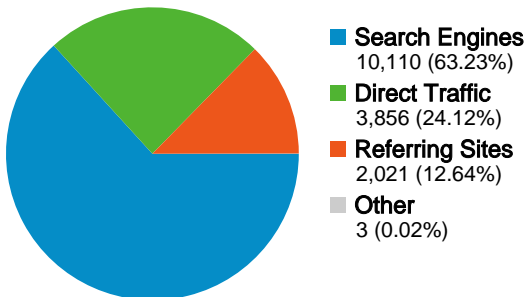


**Visitors**  
**11,685**

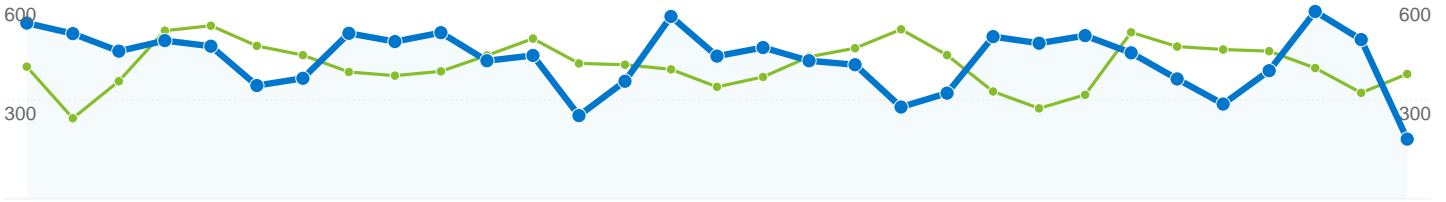
**Map Overlay world**



**Traffic Sources Overview**



Content Overview		
Pages	Pageviews	% Pageviews
/		
Feb 29, 2008 - Mar 30, 2008	17,563	29.10%
Mar 31, 2008 - Apr 30, 2008	17,044	28.17%
% Change	-2.96%	-2.96%
/flights/flight-view---real-time.html		
Feb 29, 2008 - Mar 30, 2008	10,609	17.58%
Mar 31, 2008 - Apr 30, 2008	8,799	14.54%
% Change	-17.06%	-17.06%
/flights/arrivals---real-time.html		
Feb 29, 2008 - Mar 30, 2008	2,721	4.51%
Mar 31, 2008 - Apr 30, 2008	2,644	4.37%
% Change	-2.83%	-2.83%
/airlines/delta.html		
Feb 29, 2008 - Mar 30, 2008	1,418	2.35%
Mar 31, 2008 - Apr 30, 2008	1,519	2.51%
% Change	7.12%	7.12%
/flights/flight-schedule-search.html		
Feb 29, 2008 - Mar 30, 2008	1,526	2.53%
Mar 31, 2008 - Apr 30, 2008	1,465	2.42%
% Change	-4.00%	-4.00%



## 11,685 people visited this site



**15,990 Visits**

Previous: 14,859 (7.61%)



**11,685 Absolute Unique Visitors**

Previous: 11,054 (5.71%)



**60,513 Pageviews**

Previous: 60,358 (0.26%)



**3.78 Average Pageviews**

Previous: 4.06 (-6.83%)



**00:04:42 Time on Site**

Previous: 00:06:19 (-25.49%)



**36.32% Bounce Rate**

Previous: 35.28% (2.96%)



**64.70% New Visits**

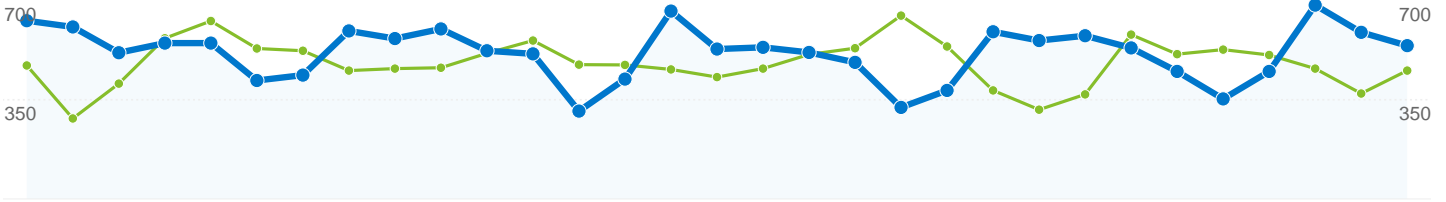
Previous: 67.01% (-3.44%)

## Technical Profile

Browser	Visits	% visits	Connection Speed	Visits	% visits
Internet Explorer			Cable		
Feb 29, 2008 - Mar 30, 2008	11,165	75.14%	Feb 29, 2008 - Mar 30, 2008	4,767	32.08%
Mar 31, 2008 - Apr 30, 2008	12,109	75.73%	Mar 31, 2008 - Apr 30, 2008	4,862	30.41%
% Change	8.45%	8.45%	% Change	1.99%	1.99%
Firefox			Unknown		
Feb 29, 2008 - Mar 30, 2008	2,783	18.73%	Feb 29, 2008 - Mar 30, 2008	3,904	26.27%
Mar 31, 2008 - Apr 30, 2008	2,892	18.09%	Mar 31, 2008 - Apr 30, 2008	4,593	28.72%
% Change	3.92%	3.92%	% Change	17.65%	17.65%
Safari			DSL		
Feb 29, 2008 - Mar 30, 2008	734	4.94%	Feb 29, 2008 - Mar 30, 2008	3,967	26.70%
Mar 31, 2008 - Apr 30, 2008	783	4.90%	Mar 31, 2008 - Apr 30, 2008	3,993	24.97%

% Change	6.68%	6.68%
Opera		
Feb 29, 2008 - Mar 30, 2008	110	0.74%
Mar 31, 2008 - Apr 30, 2008	130	0.81%
% Change	18.18%	18.18%
Mozilla		
Feb 29, 2008 - Mar 30, 2008	26	0.17%
Mar 31, 2008 - Apr 30, 2008	30	0.19%
% Change	15.38%	15.38%

% Change	0.66%	0.66%
T1		
Feb 29, 2008 - Mar 30, 2008	1,364	9.18%
Mar 31, 2008 - Apr 30, 2008	1,619	10.13%
% Change	18.70%	18.70%
Dialup		
Feb 29, 2008 - Mar 30, 2008	598	4.02%
Mar 31, 2008 - Apr 30, 2008	676	4.23%
% Change	13.04%	13.04%

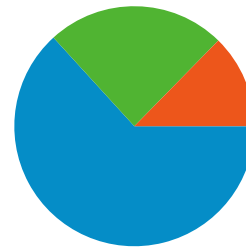


## All traffic sources sent a total of 15,990 visits

**24.12% Direct Traffic**  
Previous: 23.31% (3.47%)

**12.64% Referring Sites**  
Previous: 13.13% (-3.74%)

**63.23% Search Engines**  
Previous: 63.56% (-0.52%)



- **Search Engines**  
10,110 (63.23%)
- **Direct Traffic**  
3,856 (24.12%)
- **Referring Sites**  
2,021 (12.64%)
- **Other**  
3 (0.02%)

## Top Traffic Sources

Sources	Visits	% visits
google (organic)		
Feb 29, 2008 - Mar 30, 2008	7,197	48.44%
Mar 31, 2008 - Apr 30, 2008	7,693	48.11%
% Change	6.89%	6.89%
(direct) ((none))		
Feb 29, 2008 - Mar 30, 2008	3,463	23.31%
Mar 31, 2008 - Apr 30, 2008	3,856	24.12%
% Change	11.35%	11.35%
yahoo (organic)		
Feb 29, 2008 - Mar 30, 2008	1,230	8.28%
Mar 31, 2008 - Apr 30, 2008	1,175	7.35%
% Change	-4.47%	-4.47%
live (organic)		
Feb 29, 2008 - Mar 30, 2008	252	1.70%
Mar 31, 2008 - Apr 30, 2008	452	2.83%
% Change	79.37%	79.37%
msn (organic)		
Feb 29, 2008 - Mar 30, 2008	341	2.29%

Keywords	Visits	% visits
asheville airport		
Feb 29, 2008 - Mar 30, 2008	3,105	32.88%
Mar 31, 2008 - Apr 30, 2008	3,250	32.15%
% Change	4.67%	4.67%
asheville regional airport		
Feb 29, 2008 - Mar 30, 2008	937	9.92%
Mar 31, 2008 - Apr 30, 2008	879	8.69%
% Change	-6.19%	-6.19%
asheville nc airport		
Feb 29, 2008 - Mar 30, 2008	694	7.35%
Mar 31, 2008 - Apr 30, 2008	729	7.21%
% Change	5.04%	5.04%
asheville, nc airport		
Feb 29, 2008 - Mar 30, 2008	401	4.25%
Mar 31, 2008 - Apr 30, 2008	419	4.14%
% Change	4.49%	4.49%
avl		
Feb 29, 2008 - Mar 30, 2008	416	4.40%

---

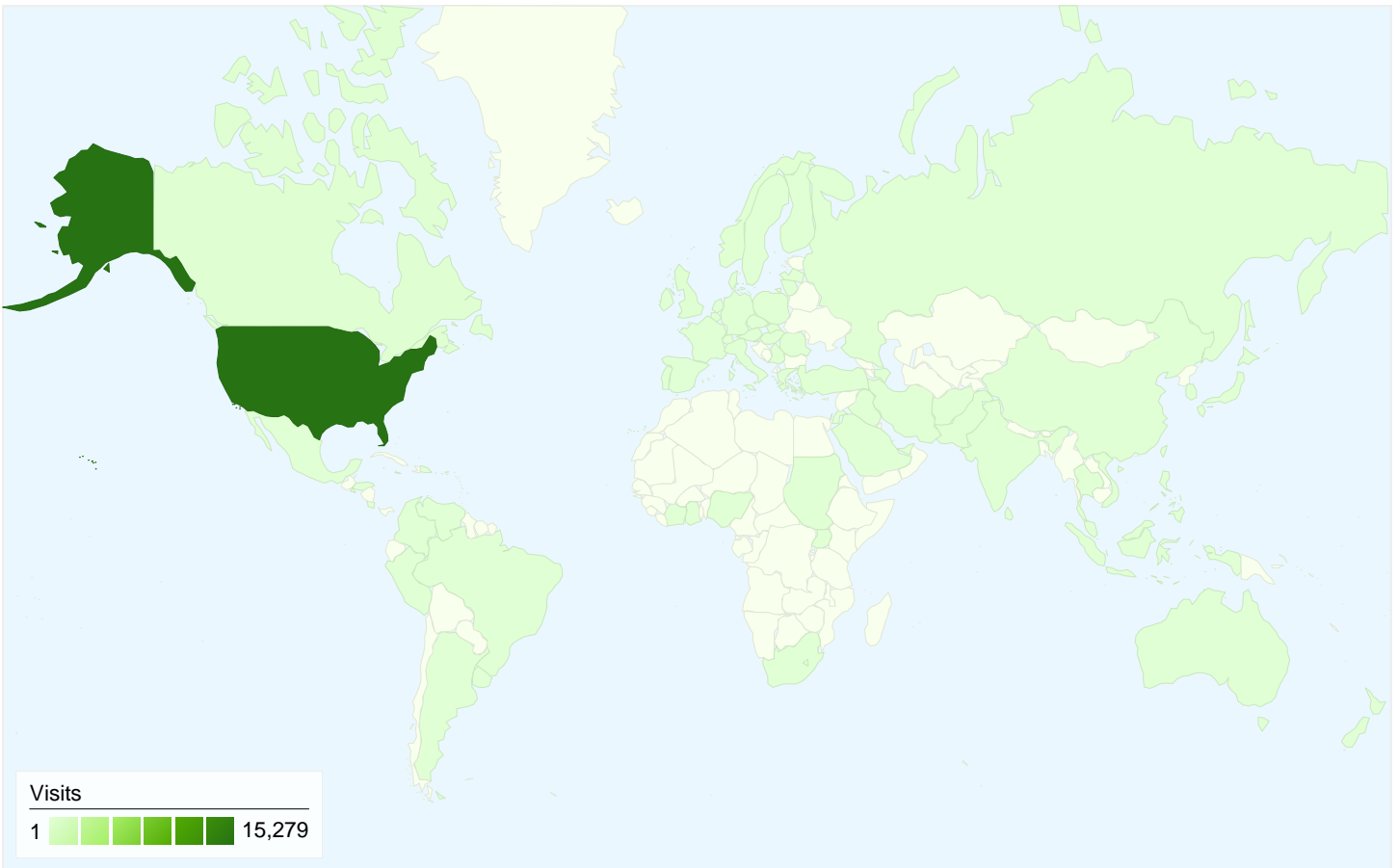
Mar 31, 2008 - Apr 30, 2008	356	2.23%
% Change	4.40%	4.40%

---

---

Mar 31, 2008 - Apr 30, 2008	399	3.95%
% Change	-4.09%	-4.09%

---



## 15,990 visits came from 79 countries/territories

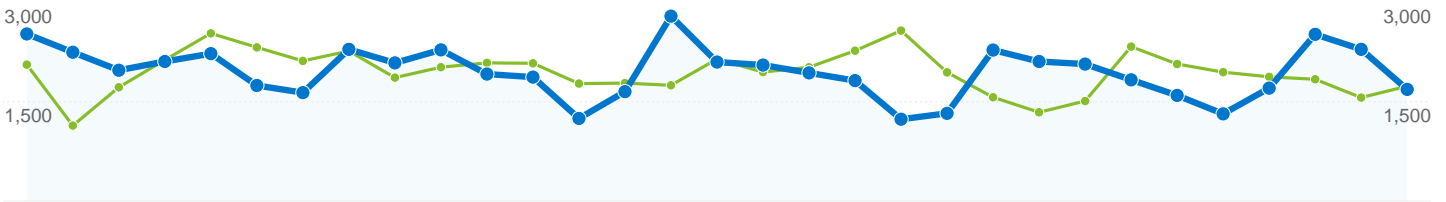
### Site Usage

Visits	Pages/Visit	Avg. Time on Site	% New Visits	Bounce Rate	
<b>15,990</b> Previous: 14,859 (7.61%)	<b>3.78</b> Previous: 4.06 (-6.83%)	<b>00:04:42</b> Previous: 00:06:19 (-25.49%)	<b>66.05%</b> Previous: 67.01% (-1.43%)	<b>36.32%</b> Previous: 35.28% (2.96%)	
Country/Territory	Visits	Pages/Visit	Avg. Time on Site	% New Visits	Bounce Rate
<b>United States</b>					
Feb 29, 2008 - Mar 30, 2008	14,160	4.09	00:06:28	66.81%	34.74%
Mar 31, 2008 - Apr 30, 2008	15,279	3.82	00:04:47	65.69%	35.91%
% Change	7.90%	-6.73%	-26.06%	-1.68%	3.38%
<b>United Kingdom</b>					
Feb 29, 2008 - Mar 30, 2008	136	4.18	00:03:30	71.32%	43.38%
Mar 31, 2008 - Apr 30, 2008	115	3.44	00:02:03	76.52%	35.65%
% Change	-15.44%	-17.70%	-41.55%	7.29%	-17.82%
<b>Canada</b>					
Feb 29, 2008 - Mar 30, 2008	98	3.85	00:02:24	85.71%	41.84%

Mar 31, 2008 - Apr 30, 2008	94	3.53	00:01:56	86.17%	45.74%
% Change	-4.08%	-8.19%	-19.89%	0.53%	9.34%
<b>Norway</b>					
Feb 29, 2008 - Mar 30, 2008	58	1.53	00:05:50	3.45%	58.62%
Mar 31, 2008 - Apr 30, 2008	73	1.64	00:05:57	0.00%	58.90%
% Change	25.86%	7.13%	2.01%	-100.00%	0.48%
<b>Germany</b>					
Feb 29, 2008 - Mar 30, 2008	70	3.83	00:03:40	52.86%	34.29%
Mar 31, 2008 - Apr 30, 2008	46	4.07	00:02:40	82.61%	26.09%
% Change	-34.29%	6.18%	-27.17%	56.29%	-23.91%
<b>France</b>					
Feb 29, 2008 - Mar 30, 2008	11	4.36	00:01:24	81.82%	27.27%
Mar 31, 2008 - Apr 30, 2008	31	5.45	00:07:59	77.42%	25.81%
% Change	181.82%	24.93%	467.51%	-5.38%	-5.38%
<b>Japan</b>					
Feb 29, 2008 - Mar 30, 2008	16	2.25	00:01:56	75.00%	43.75%
Mar 31, 2008 - Apr 30, 2008	26	4.15	00:03:29	61.54%	23.08%
% Change	62.50%	84.62%	80.96%	-17.95%	-47.25%
<b>India</b>					
Feb 29, 2008 - Mar 30, 2008	22	2.50	00:02:32	90.91%	31.82%
Mar 31, 2008 - Apr 30, 2008	25	1.84	00:01:53	80.00%	48.00%
% Change	13.64%	-26.40%	-25.81%	-12.00%	50.86%
<b>Australia</b>					
Feb 29, 2008 - Mar 30, 2008	14	3.36	00:01:33	100.00%	50.00%
Mar 31, 2008 - Apr 30, 2008	23	3.22	00:03:34	95.65%	56.52%
% Change	64.29%	-4.16%	128.90%	-4.35%	13.04%
<b>South Korea</b>					
Feb 29, 2008 - Mar 30, 2008	3	6.67	00:14:32	66.67%	0.00%
Mar 31, 2008 - Apr 30, 2008	17	2.88	00:02:10	58.82%	58.82%
% Change	466.67%	-56.76%	-85.08%	-11.76%	100.00%


1 - 10 of 79






## Pages on this site were viewed a total of 60,513 times

 **60,513 Pageviews**  
Previous: 60,358 (0.26%)

 **40,477 Unique Views**  
Previous: 37,804 (7.07%)

 **36.32% Bounce Rate**  
Previous: 35.28% (2.96%)

## Top Content

Pages	Pageviews	% Pageviews
/		
Feb 29, 2008 - Mar 30, 2008	17,563	29.10%
Mar 31, 2008 - Apr 30, 2008	17,044	28.17%
% Change	-2.96%	-2.96%
/flights/flight-view---real-time.html		
Feb 29, 2008 - Mar 30, 2008	10,609	17.58%
Mar 31, 2008 - Apr 30, 2008	8,799	14.54%
% Change	-17.06%	-17.06%
/flights/arrivals---real-time.html		
Feb 29, 2008 - Mar 30, 2008	2,721	4.51%
Mar 31, 2008 - Apr 30, 2008	2,644	4.37%
% Change	-2.83%	-2.83%
/airlines/delta.html		
Feb 29, 2008 - Mar 30, 2008	1,418	2.35%
Mar 31, 2008 - Apr 30, 2008	1,519	2.51%
% Change	7.12%	7.12%
/flights/flight-schedule-search.html		
Feb 29, 2008 - Mar 30, 2008	1,526	2.53%

Mar 31, 2008 - Apr 30, 2008	1,465	2.42%
% Change	-4.00%	-4.00%

**Asheville Regional Airport Authority**  
**Project Report - May 2008**

Project Number	Project Name	Project Description	Professional Services Consultant	Professional Services Contract	General Contractor	Original Construction Contract	Change Orders (thru 03/31/08)	Percent of Original Contract	Total Project Cost	Percent Complete	Expensed to Date (thru 3/31/08)	Start Date	End Date	Current Project Status (as of 5/1/08)
<b>Planning Phase</b>														
1	Landside Access, Roadway and Parking Planning and Programming	This project involves the concept evaluation and planning study for landside roadway access and parking areas for the airport.	WK Dickson	\$169,812.00	na	na	na	na	\$169,812.00	50%	\$17,399.76	Dec-07		Alternative concepts and modifications are being reviewed based on the comments received at the April 11 Board meeting.
<b>Design Phase</b>														
2	22,000 Sq Ft Bulk Hangar - 168 Wright Brothers Way	A 22,000 sq ft bulk hangar will be constructed on existing ramp area adjacent to the Lacy Griffin Building. The hangar will be under a management agreement with Million Air.	LPA Group	\$265,535.00	na	na	na	na	\$265,535.00	50%	\$0.00	Dec-07	Jun-08	Project plans will be reviewed by the City Planning and Zoning Commission on May 7.
<b>Construction Phase</b>														
3	Consolidated Rental Car Service Facility	The Rental Car Service Facility will include service and storage facilities for 5 rental car companies. The facilities include areas for maintenance, car wash, fuel, vacuum and parking storage.	LPA Group	\$525,920.10	Buncombe Construction Co.	\$6,778,500.00	\$84,929.00	1.25%	\$7,389,349.10	95%	\$ 6,003,366.97	Apr-07	May-08	Punchlist inspection took place on May 1. The contractor is completing cleanup and a few remaining project items.
4	Regional Boarding Ramp Project	The Regional Boarding Ramp (RBR) Project includes the purchase and installation of regional boarding ramps, pre-conditioned air units, and 400hz fixed ground power units at the "B" Boarding gate positions.	RS&H	\$24,500.00	Construction Logic	\$780,810.00	-\$73,233.00	-9.29%	\$1,343,000.00	85%	\$ 830,180.33	Oct-06	Jun-08	The contractor is nearing substantial completion on the GC items. The RBR installation crew is scheduled for the end of May.
5	Terminal Renovation and Expansion - Phase 1	The Terminal Renovation and Expansion - Phase 1 Project includes enlarging the baggage claim area and airline ticket office areas. Improvements and modifications include additional square footage and increased baggage capacity.	SchenkelShultz	\$614,300.00	Perry Bartsch Jr.	\$ 4,479,000.00	\$91,281.00	2.03%	\$5,184,581.00	45%	\$ 1,579,395.35	Jul-06	Sep-08	Major steel erection and concrete floor slabs are complete. Interior framing is underway along with MEP rough-in.
6	Security System & Access Control Project	The Security System & Access Control Project includes the design and professional services for replacing and improving the current ACS and CCTV systems.	Faith Group	\$185,870.00	I-Sys	\$ 1,473,984.00	\$0.00	0.00%	\$1,659,854.00	70%	\$ 922,654.99	Jul-06	Jun-08	CCTV installation is 80% complete and door cutover has started.
7	North General Aviation Expansion Project	The North GA project includes multiple phases; phase one consisted of tree harvesting and logging operations, phase two included clearing and grubbing of the site and phase three involves the placement and compaction of structural fill material for the site.	WK Dickson	\$0.00	Charah	\$ -	\$0.00	0.00%	\$3,000,000.00	25%	\$ 411,792.31	Nov-07	May-09	Placement of fill material has moved into phase 2. DWQ 404 permit process is underway.
<b>Close-Out Phase</b>														
NA														
NA														