



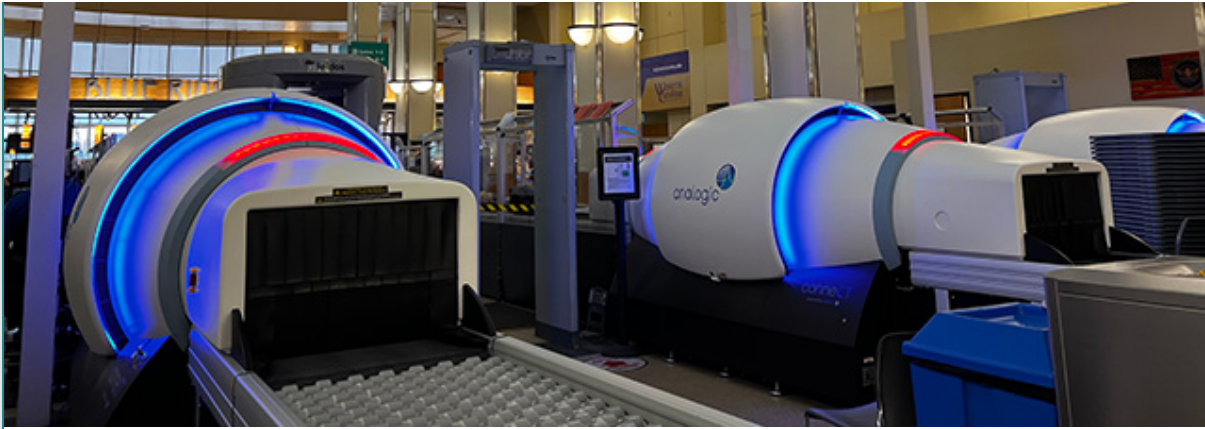
## **MORE FLIGHTS FOR YOU!**

*American adding second daily flight to D.C.*

You now have even more options to DCA (Washington, D.C.) this fall.

American Airlines is adding a second daily flight to DCA for fall travel, daily in September and October. Twice daily departures from AVL to DCA will occur at 2:10pm and 7:39pm, which is great news for travelers in both the AVL and DC markets.

[BOOK A TRIP](#)



## NEW CT SCANNERS AT TSA

*Get ready for a new checkpoint experience*

Three new futuristic-looking machines are now located at AVL's TSA checkpoint and are providing advanced screening capabilities.

Last month, the TSA installed the new computed tomography (CT) X-ray scanners. The CT units apply a sophisticated algorithm as they generate a 3-D image of the contents of the carry-on bag. A TSA officer can manipulate the 3-D X-ray image on-screen to allow for a better view of the bag's contents, ultimately reducing the number of bag checks that are required.

**And good news for passengers!** When a carry-on bag is screened through a CT scanner, travelers can leave everything in their carry-on bag, including electronics larger than a cell phone, liquids (3.4 ounces or less) and food.

One important note about the new scanners is that the opening to the X-ray tunnel on a CT unit is slightly smaller than on a traditional X-ray unit, which means adhering to carry-on size limitations is important. Every carry-on item must be placed in a bin for screening, and if bags don't fit, you may be asked to return to the airline ticket counter to check your bag.



## NEED ASSISTANCE WHEN AT THE AIRPORT?

*Guest Services is here to help!*

AVL's Guest Services is here to help with your travel questions. Stop by the desk in baggage claim for:

- Ground transportation arrangements
- Directions
- Area Maps and brochures

- Flight information
- Paging
- Postage and shipping
- Luggage carts
- Lost and found
- And more!

[READ MORE >](#)



## AVL CONSTRUCTION UPDATE

*The new central energy plant is taking shape*

If you have flown through AVL recently you may have noticed a new building under construction on the north end of the terminal. This is the new central energy plant (CEP) that will support the upcoming modernization and renovation of the new airport terminal (soon to be under construction). The building will provide energy and house the mechanical systems for the new terminal.

The contractor is currently completing pre-cast wall installation and the building's shell is expected to be completed by the end of June.

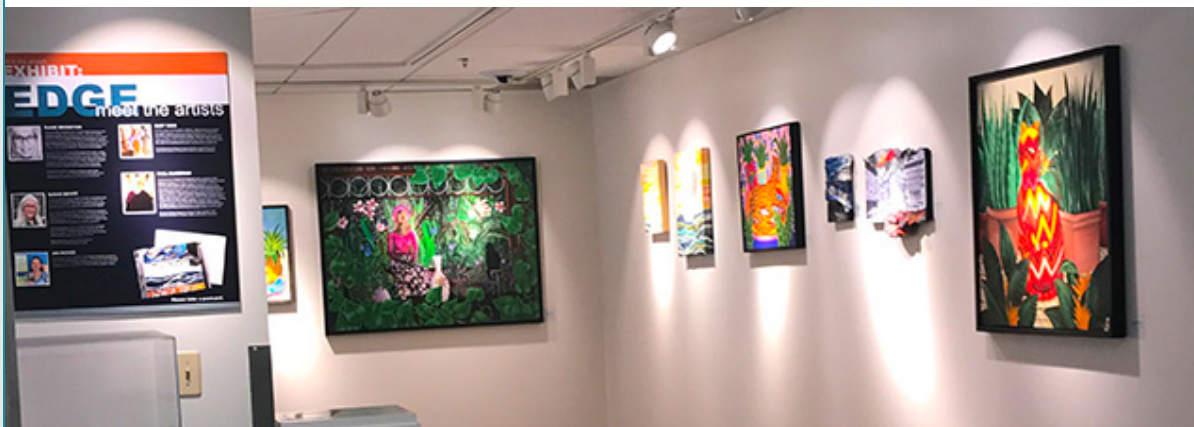


## CHANGES ARE COMING TO BOARDING AREAS

*Temporary passenger gate area opening soon*

New gate areas are opening in May! This modular building, located adjacent to our existing south gates, will serve as a passenger gate boarding area when construction begins on the new terminal project, starting soon. This gate area is 5,400 square feet and will have seating, climate control,

restrooms, vending and a food and beverage bar area. The space is expected to be open the second week of May and will remain in operation for approximately two years.



## NEW EXHIBIT AT AVL FEATURING FIVE LOCAL ARTISTS

*EDGE on display until June 2023*

AVL's Art in the Airport program is excited to unveil the spring exhibit titled EDGE. This exhibit features five talented local artists whose one-of-a-kind work is expressed in a variety of mediums. The local art is unique, bold and is sure to capture the imaginations of its viewers.

Be sure to view this new exhibit the next time you are at AVL. EDGE will be on display now through July 21, 2023. Artwork can be purchased from the gallery by emailing [art@flyavl.com](mailto:art@flyavl.com). Details about the program and how to apply can be found on the airport's website at [flyavl.com](http://flyavl.com).

[READ MORE >](#)



## BUSY TRAVEL SEASON IS HERE

*Be a savvy traveler*

Spring is in the air, and so are thousands of travelers! As the busy spring and summer travel season begins, make sure you're a savvy traveler with these helpful tips:

- **Bringing sunscreen? Pack it in the right bag :** Sunscreen is the smart way to stay safe from the sun, and you want to make sure you have plenty of it for your summer getaway. However, if you want to pack it in your carry-on it must comply with [TSA's 3-1-1 liquids rule](#).
- **Arrive 2 hours before your flight:** Don't be late to your gate! As the volume of travelers increases, it is more important than ever to arrive early for your flight.

- **Consider bringing or wearing socks:** It's now sandal season, but some people's feet get cold on an airplane! Consider wearing socks and easily removable shoes (like slip-ons) or tuck a pair of socks in your carry-on bag just in case.

Remember to travel smart and plan ahead this busy travel season so that your trip is a (summer) breeze!

## 6 AIRLINES. ENDLESS POSSIBILITIES. – LET'S GO!



[BOOK YOUR FLIGHT TODAY](#)



**APRIL 2023**

Copyright © 2023. All Rights Reserved.

Greater Asheville Regional Airport Authority | 61 Terminal Drive, Suite 1, Fletcher, NC 28732

[Unsubscribe tkinsey@flyavl.com](mailto:tkinsey@flyavl.com)

[Update Profile](#) | [Constant Contact Data Notice](#)

Sent by pr@flyavl.com powered by