



## MEMORANDUM

TO: Members of the Airport Authority

FROM: David N. Edwards, Jr., A.A.E.

DATE: July 11, 2008

### Informational Reports:

- A. May, 2008 Traffic Report ([document](#))
- B. May, 2008 Monthly Financial Report ([document](#))
- C. July, 2008 Marketing and Public Relations Report ([document](#))
- D. July, 2008 Development/Project Status Report ([document](#))
- E. Potential Board Items for the Next Regular Scheduled Meeting
  - Volunteer Program Presentation
  - Award of Hangar Bid
  - General Consultant Selection
  - Ribbon Cutting Rental Car Service Facility
  - Roadway Parking Conceptual Plan Update
  - Election of Officers
  - Service Recognition of Authority Board Members

\* **Note: The Authority Member Workshop Meeting will be held immediately following the Board Meeting.**



## MONTHLY TRAFFIC REPORT ASHEVILLE REGIONAL AIRPORT July 11, 2008

### **SUMMARY**

May 2008 overall passenger traffic numbers were down 7.9%. This appears to be a trend at several airports that are similar in size to AVL. The following are passenger results for other airports for the same period:

- Savannah, GA (+1%)
- Mobile, AL (-11%)
- Jackson, MS (-5%)
- Springfield, MO (-16%)
- Raleigh-Durham, NC (-0.9%)
- Greensboro, NC (+1.37%)
- Daytona Beach, FL (-10.37%)
- Chattanooga, TN (-3.85%)
- Columbia, SC (-10.85%)

### **AIRLINE PERFORMANCE**

Atlantic Southeast Airlines (ASA): Delta/ASA's May 2008 enplanements decreased by 23.8% compared to May 2007. There were a total of zero (0) flight cancellations for the month.

Continental Airlines: Continental's May 2008 passenger enplanements decreased by 3.8% compared to May 2007. There were two (2) flight cancellations for the month.

Northwest Airlines: Year over Year passenger enplanements for Northwest in May 2008 were down 2.8%. There were zero (0) flight cancellations for the month.

US Airways: US Airways' May 2008 passenger enplanements represent a 0.4% increase. There were six (6) flight cancellations for the month.

# Monthly Traffic Report

## Asheville Regional Airport

### May 2008



Category	May 2008	May 2007	Percentage Change	*CYTD-2008	*CYTD-2007	Percentage Change	*MOV12-2008	*MOV12-2007	Percentage Change
<b>Passenger Traffic</b>									
Enplaned	23,730	26,555	-10.6%	99,121	103,519	-4.2%	285,020	286,026	-0.4%
Deplaned	<u>24,825</u>	<u>26,151</u>	-5.1%	<u>99,589</u>	<u>101,758</u>	-2.1%	<u>280,728</u>	<u>280,604</u>	0.0%
<b>Total</b>	<b>48,555</b>	<b>52,706</b>	<b>-7.9%</b>	<b>198,710</b>	<b>205,277</b>	<b>-3.2%</b>	<b>565,748</b>	<b>566,630</b>	<b>-0.2%</b>
<b>Aircraft Operations</b>									
Airlines	91	141	-35.5%	477	746	-36.1%	1,538	2,311	-33.4%
Commuter /Air Taxi	<u>1,660</u>	<u>1,789</u>	-7.2%	6,762	7,119	-5.0%	18,900	18,569	1.8%
<b>Subtotal</b>	<u>1,751</u>	<u>1,930</u>	-9.3%	<u>7,239</u>	<u>7,865</u>	-8.0%	<u>20,438</u>	<u>20,880</u>	-2.1%
General Aviation	5,852	5,477	6.8%	21,482	20,535	4.6%	59,248	53,523	10.7%
Military	<u>177</u>	<u>165</u>	7.3%	<u>860</u>	<u>801</u>	7.4%	<u>2,442</u>	<u>2,365</u>	3.3%
<b>Subtotal</b>	<u>6,029</u>	<u>5,642</u>	6.9%	<u>22,342</u>	<u>21,336</u>	4.7%	<u>61,690</u>	<u>55,888</u>	10.4%
<b>Total</b>	<b>7,780</b>	<b>7,572</b>	<b>2.7%</b>	<b>29,581</b>	<b>29,201</b>	<b>1.3%</b>	<b>82,128</b>	<b>76,768</b>	<b>7.0%</b>
<b>Fuel Gallons</b>									
100LL	21,334	27,433	-22.2%	85,196	105,360	-19.1%	267,324	281,087	-4.9%
Jet A (GA)	127,168	166,325	-23.5%	461,768	595,640	-22.5%	1,607,537	1,648,630	-2.5%
<b>Subtotal</b>	<u>148,502</u>	<u>193,758</u>	-23.4%	<u>546,964</u>	<u>701,000</u>	-22.0%	<u>1,874,861</u>	<u>1,929,717</u>	-2.8%
Jet A (A/L)	<u>220,236</u>	<u>252,481</u>	-12.8%	<u>1,038,415</u>	<u>1,075,752</u>	-3.5%	<u>2,774,643</u>	<u>2,879,861</u>	-3.7%
<b>Total</b>	<b>368,738</b>	<b>446,239</b>	<b>-17.4%</b>	<b>1,585,379</b>	<b>1,776,752</b>	<b>-10.8%</b>	<b>4,649,504</b>	<b>4,809,578</b>	<b>-3.3%</b>

\*CYTD = Calendar Year to Date and \*Mov12 = Moving Twelve Months.

Thursday, June 19, 2008

# Airline Enplanements, Seats, and Load Factors

## Asheville Regional Airport

### May 2008



	May 2008	May 2007	Percentage Change	*CYTD-2008	*CYTD-2007	Percentage Change
<b>Continental Airlines</b>						
Enplanements	3,005	3,124	-3.8%	10,511	10,835	-3.0%
Seats	4,174	3,691	13.1%	15,143	14,891	1.7%
Load Factor	72.0%	84.6%	-14.9%	69.4%	72.8%	-4.6%
<b>Delta Air Lines</b>						
Enplanements	8,457	11,095	-23.8%	38,180	43,377	-12.0%
Seats	10,908	13,884	-21.4%	52,133	58,726	-11.2%
Load Factor	77.5%	79.9%	-3.0%	73.2%	73.9%	-0.8%
<b>Northwest Airlines</b>						
Enplanements	3,487	3,588	-2.8%	14,138	13,345	5.9%
Seats	4,400	4,400	0.0%	21,200	20,846	1.7%
Load Factor	79.3%	81.5%	-2.8%	66.7%	64.0%	4.2%
<b>US Airways</b>						
Enplanements	8,781	8,748	0.4%	36,292	35,962	0.9%
Seats	11,955	11,745	1.8%	50,720	52,213	-2.9%
Load Factor	73.5%	74.5%	-1.4%	71.6%	68.9%	3.9%
<b>Totals</b>						
Enplanements	23,730	26,555	-10.6%	99,121	103,519	-4.2%
Seats	31,437	33,720	-6.8%	139,196	146,676	-5.1%
Load Factor	75.5%	78.8%	-4.1%	71.2%	70.6%	0.9%

Friday, June 27, 2008

\*CTYD = Calendar Year to Date and \*Mov12 = Moving Twelve Months.

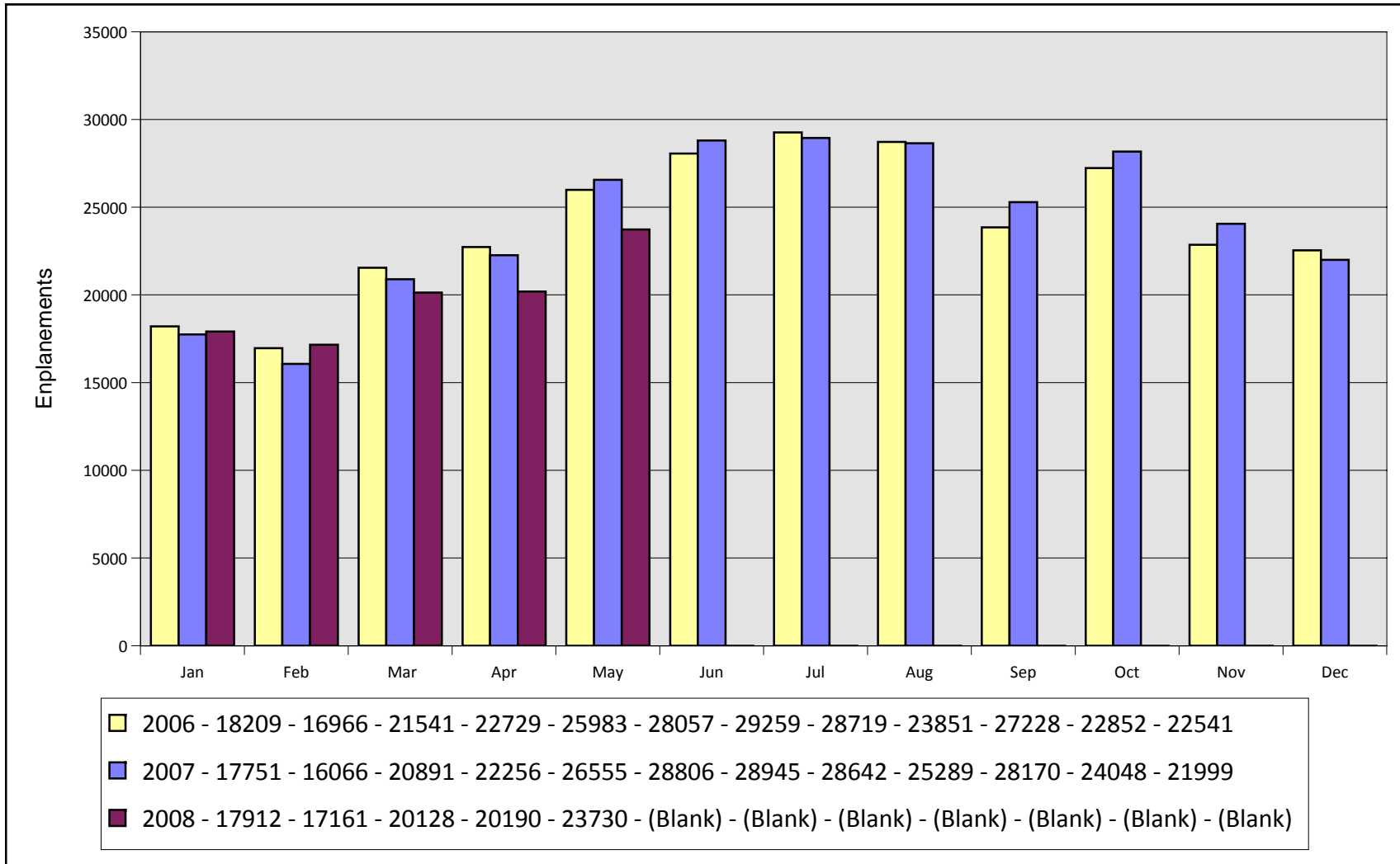
# Airline Flight Completions Asheville Regional Airport May 2008



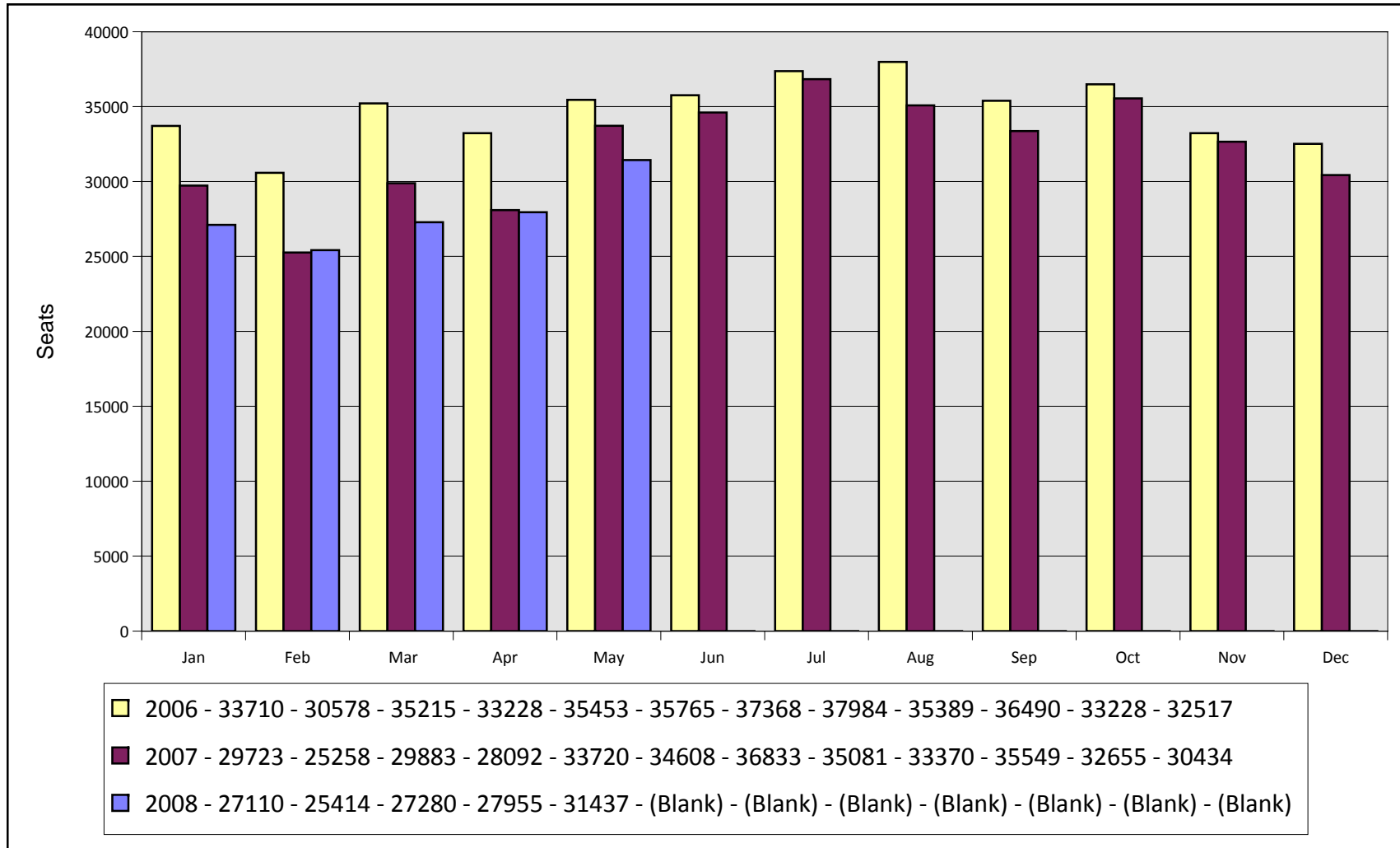
Airline	Scheduled Flights	Field	Cancellations Due To			Total Cancellations	Percentage of Completed Flights
			Mechanical	Weather	Other		
Continental Airlines	86	0	2	0	0	2	97.7%
Delta Air Lines	210	0	0	0	0	0	100.0%
Northwest Airlines	88	0	0	0	0	0	100.0%
US Airways	275	0	6	0	0	6	97.8%
<b>Total</b>	<b>659</b>	<b>0</b>	<b>8</b>	<b>0</b>	<b>0</b>	<b>8</b>	<b>98.8%</b>

Friday, June 27, 2008

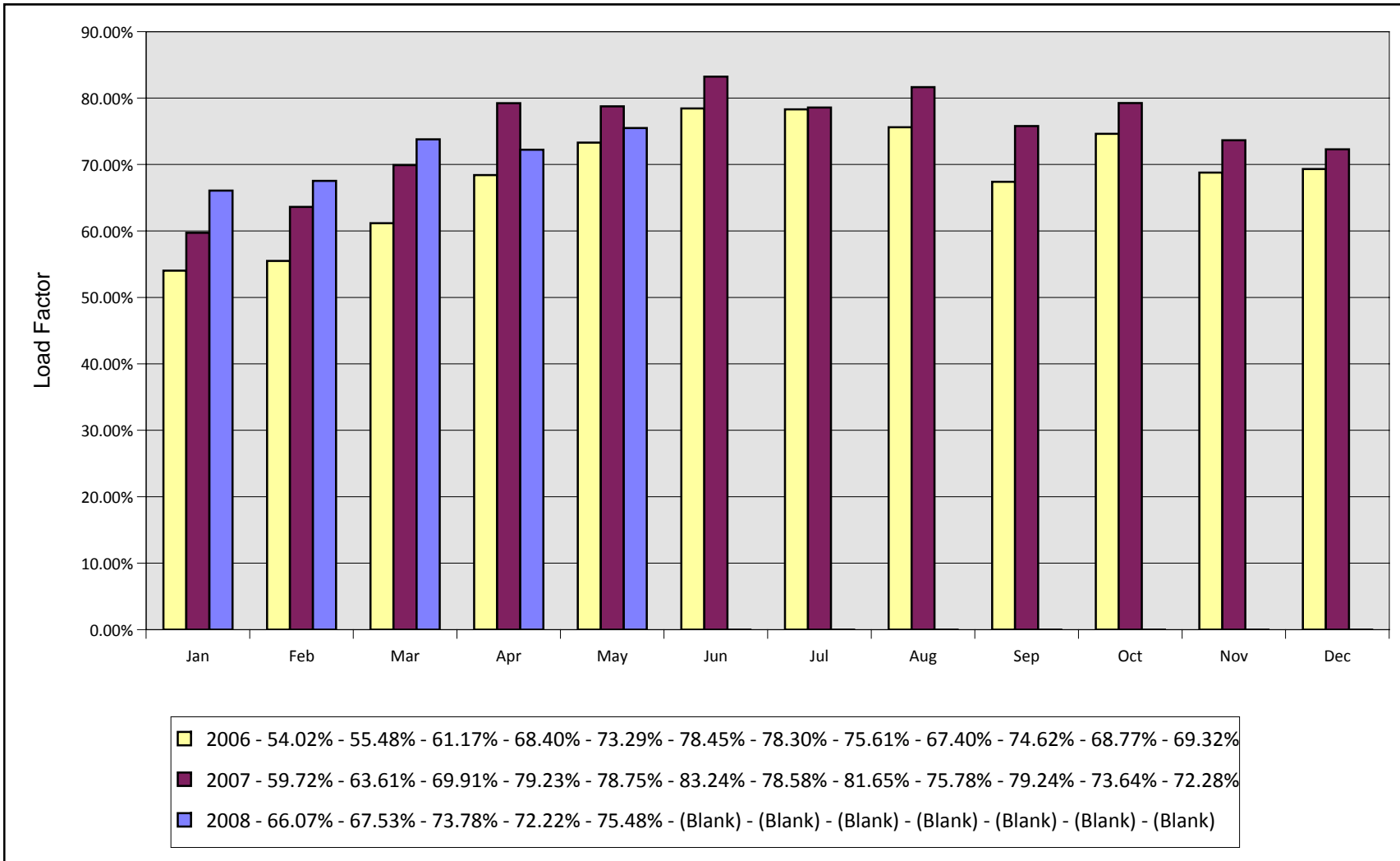
# Monthly Enplanements By Year Asheville Regional Airport



# Monthly Seats By Year Asheville Regional Airport

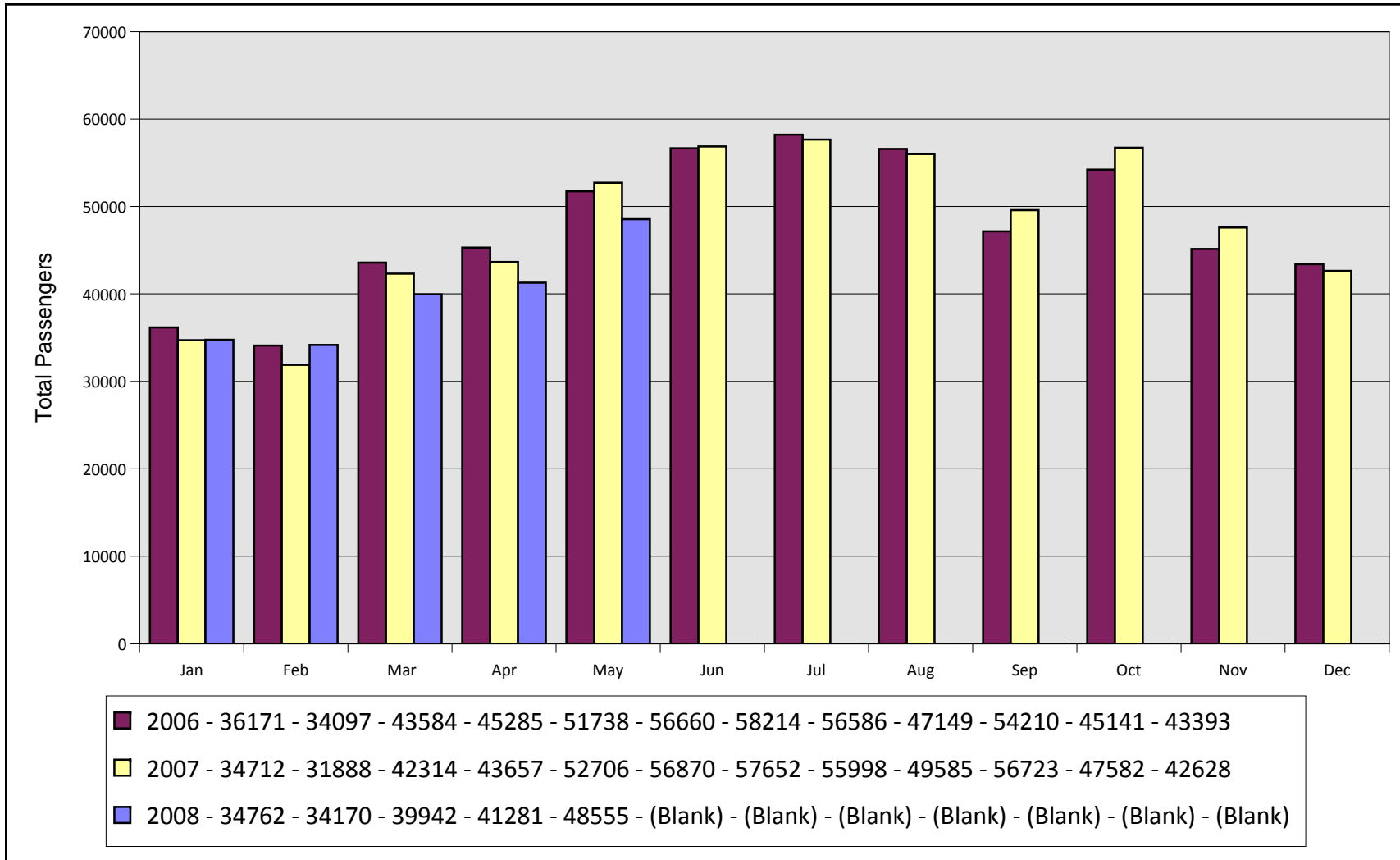


# Monthly Load Factors By Year Asheville Regional Airport



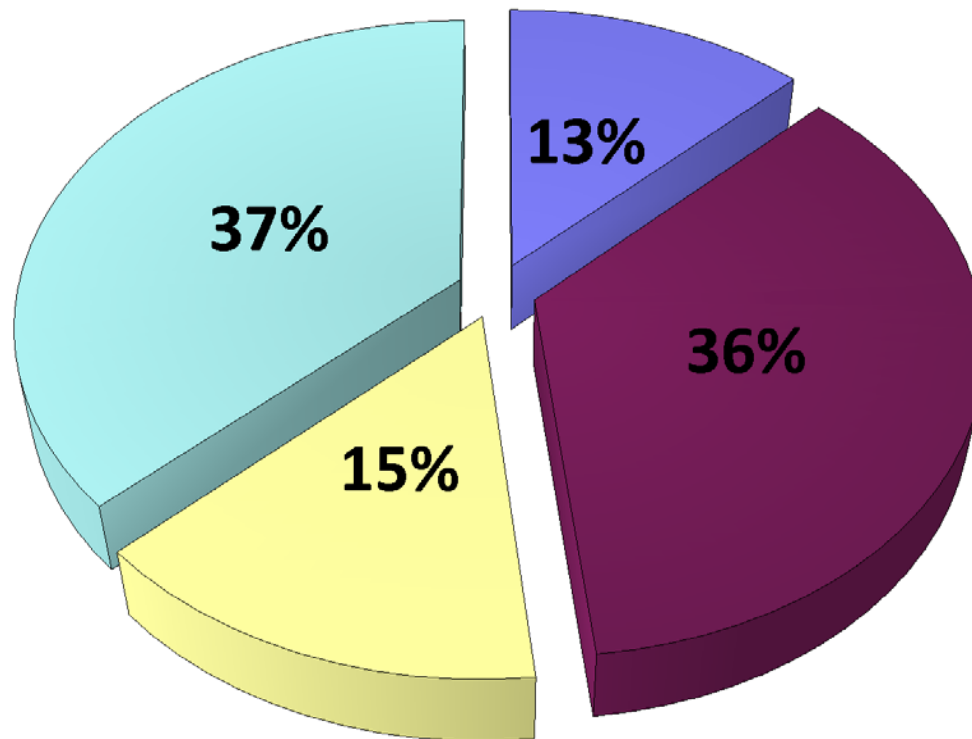


# Total Monthly Passengers By Year Asheville Regional Airport

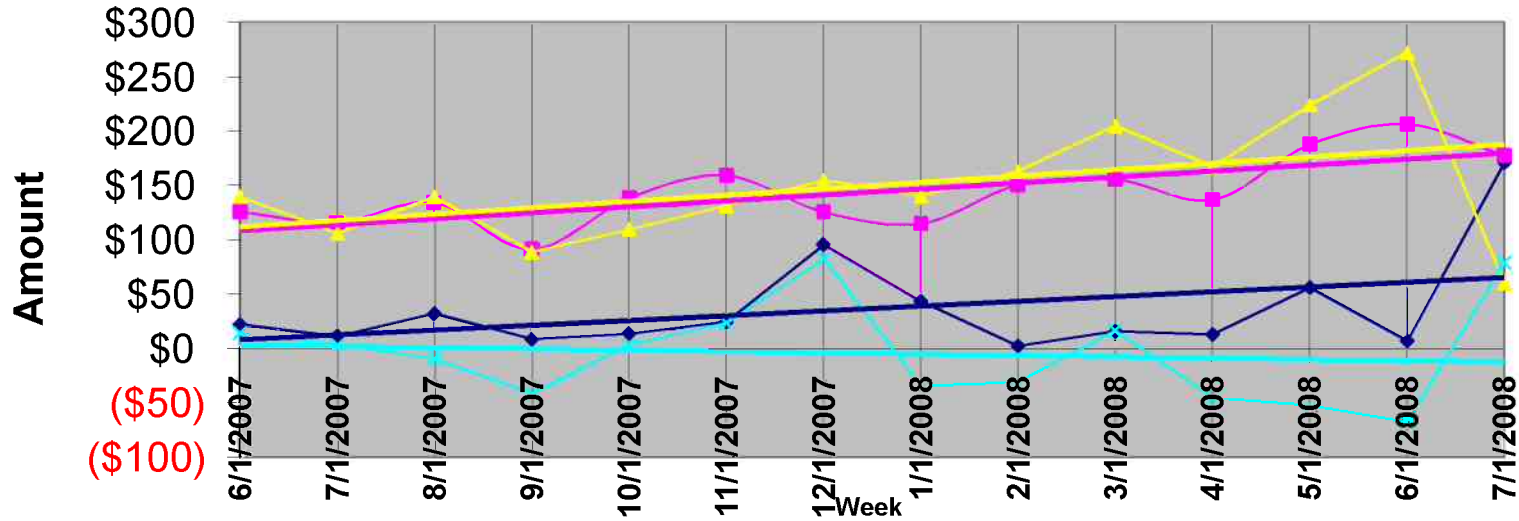


# Airline Market Share Analysis (Enplanements) Asheville Regional Airport

Report Period From May 2008 Through May 2008



## AVL Average Airfare Differences 21 Day Advance Purchase, 3 Day Stay



◆ GSP

■ CLT

▲ ATL

✦ CHS/TRI

— Linear (GSP)

— Linear (CLT)

— Linear (ATL)

— Linear (CHS/TRI)

**Asheville Regional Airport**  
**Sample airfares as of 07/07/08**  
**0 Day Advance Purchase, 3 day Stay**

		Difference in Fares								
		ASHEVILLE	GREENVILLE	CHARLOTTE	ATLANTA	TRI-CITIES	GREENVILLE	CHARLOTTE	ATLANTA	TRI-CITIES
ABQ	Albuquerque	\$921	\$804	\$783	\$1,113	\$1,502	\$117	\$138	(\$192)	(\$581)
ATL	Atlanta	\$537		\$571	\$1,088	\$973	\$537	(\$34)	(\$551)	(\$436)
AUS	Austin	\$1,079	\$904	\$668	\$1,019	\$1,549	\$175	\$411	\$60	(\$470)
BWI	Baltimore	\$873	\$507	\$446	\$1,070	\$1,382	\$366	\$427	(\$197)	(\$509)
BOS	Boston	\$280	\$398	\$258	\$754	\$1,016	(\$118)	\$22	(\$474)	(\$736)
ORD	Chicago	\$280	\$537	\$612	\$778	\$1,071	(\$257)	(\$332)	(\$498)	(\$791)
CVG	Cincinnati	\$658	\$708	\$870	\$693	\$608	(\$50)	(\$212)	(\$35)	\$50
CLE	Cleveland	\$577	\$533	\$717	\$524	\$1,027	\$44	(\$140)	\$53	(\$450)
DFW	Dallas	\$817	\$724	\$780	\$918	\$1,061	\$93	\$37	(\$101)	(\$244)
DEN	Denver	\$641	\$587	\$787	\$1,219	\$1,076	\$54	(\$146)	(\$578)	(\$435)
DTW	Detroit	\$527	\$484	\$651	\$858	\$837	\$43	(\$124)	(\$331)	(\$310)
FLL	Fort Lauderdale	\$964	\$339	\$602	\$1,528	\$721	\$625	\$362	(\$564)	\$243
RSW	Ft. Myers	\$1,091	\$437	\$561	\$1,051	\$1,175	\$654	\$530	\$40	(\$84)
BDL	Hartford	\$715	\$837	\$258	\$275	\$1,049	(\$122)	\$457	\$440	(\$334)
IAH	Houston	\$999	\$555	\$764	\$1,055	\$1,346	\$444	\$235	(\$56)	(\$347)
IND	Indianapolis	\$517	\$450	\$515	\$442	\$1,051	\$67	\$2	\$75	(\$534)
JAX	Jacksonville	\$1,050	\$348	\$482	\$1,241	\$1,113	\$702	\$568	(\$191)	(\$63)
MCI	Kansas City	\$1,288	\$677	\$458	\$866	\$1,385	\$611	\$830	\$422	(\$97)
LAS	Las Vegas	\$1,164	\$772	\$670	\$884	\$940	\$392	\$494	\$280	\$224
LAX	Los Angeles	\$1,007	\$604	\$619	\$1,285	\$1,445	\$403	\$388	(\$278)	(\$438)
MHT	Manchester	\$447	\$735	\$318	\$940	\$848	(\$288)	\$129	(\$493)	(\$401)
MEM	Memphis	\$1,771	\$620	\$964	\$1,106	\$1,202	\$1,151	\$807	\$665	\$569
MIA	Miami	\$1,083	\$438	\$437	\$1,034	\$959	\$645	\$646	\$49	\$124
MKE	Milwaukee	\$1,113	\$483	\$420	\$445	\$1,215	\$630	\$693	\$668	(\$102)
MSP	Minneapolis/Saint Paul	\$837	\$482	\$813	\$969	\$1,579	\$355	\$24	(\$132)	(\$742)
BNA	Nashville	\$600	\$824	\$850	\$705	\$1,136	(\$224)	(\$250)	(\$105)	(\$536)
MSY	New Orleans	\$946	\$472	\$637	\$1,353	\$784	\$474	\$309	(\$407)	\$162
LGA	New York	\$1,217	\$491	\$397	\$893	\$1,353	\$726	\$820	\$324	(\$136)
EWR	Newark	\$567	\$482	\$437	\$687	\$1,054	\$85	\$130	(\$120)	(\$487)
MCO	Orlando	\$1,170	\$297	\$373	\$862	\$668	\$873	\$797	\$308	\$502
PHL	Philadelphia	\$850	\$609	\$567	\$624	\$589	\$241	\$283	\$226	\$261
PHX	Phoenix	\$1,564	\$770	\$579	\$1,114	\$1,311	\$794	\$985	\$450	\$253
PIT	Pittsburgh	\$551	\$601	\$268	\$688	\$691	(\$50)	\$283	(\$137)	(\$140)
PDX	Portland	\$1,195	\$837	\$546	\$1,114	\$1,407	\$358	\$649	\$81	(\$212)
PVD	Providence	\$450	\$725	\$258	\$335	\$447	(\$275)	\$192	\$115	\$3

**Asheville Regional Airport  
Sample airfares as of 07/07/08  
0 Day Advance Purchase, 3 day Stay**

RDU	Raleigh/Durham	\$1,049	\$349	\$922	\$712	\$1,019	\$700	\$127	\$337	\$30
RIC	Richmond	\$1,307	\$512	\$831	\$712	\$1,232	\$795	\$476	\$595	\$75
STL	Saint Louis	\$573	\$480	\$691	\$727	\$1,230	\$93	(\$118)	(\$154)	(\$657)
SLC	Salt Lake City	\$927	\$839	\$718	\$1,098	\$1,416	\$88	\$209	(\$171)	(\$489)
SAT	San Antonio	\$1,429	\$555	\$736	\$1,357	\$1,987	\$874	\$693	\$72	(\$558)
SAN	San Diego	\$988	\$558	\$599	\$1,010	\$1,549	\$430	\$389	(\$22)	(\$561)
SFO	San Francisco	\$990	\$599	\$611	\$1,112	\$911	\$391	\$379	(\$122)	\$79
SRQ	Sarasota/Bradenton	\$1,304	\$469	\$693	\$1,032	\$1,137	\$835	\$611	\$272	\$167
SEA	Seattle	\$1,047	\$625	\$463	\$912	\$1,310	\$422	\$584	\$135	(\$263)
SYR	Syracuse	\$607	\$621	\$288	\$815	\$1,113	(\$14)	\$319	(\$208)	(\$506)
TPA	Tampa	\$1,123	\$418	\$571	\$1,122	\$756	\$705	\$552	\$1	\$367
YYZ	Toronto	\$1,537	\$841	\$955	\$1,436	\$1,580	\$696	\$582	\$101	(\$43)
DCA	Washington DC	\$678	\$708	\$716	\$755	\$1,087	(\$30)	(\$38)	(\$77)	(\$409)
IAD	Washington DC	\$677	\$708	\$528	\$694	\$1,101	(\$31)	\$149	(\$17)	(\$424)
PBI	West Palm Beach	\$1,033	\$428	\$526	\$1,337	\$1,133	\$605	\$507	(\$304)	(\$100)
							\$337	\$317	(\$15)	(\$210) <b>Average Fare difference</b>

\*These sample airfares were available 07/07/08, based on a 0 day advance purchase and a 3 day stay. Other restrictions may apply. To obtain the most up-to-date pricing information for your travel needs, please contact your professional travel agent or visit the following web sites: [www.continental.com](http://www.continental.com); [www.delta.com](http://www.delta.com); [www.nwa.com](http://www.nwa.com); [www.usairways.com](http://www.usairways.com); [www.travelocity.com](http://www.travelocity.com); [www.orbitz.com](http://www.orbitz.com); or [www.expedia.com](http://www.expedia.com). Airfares are subject to change without notice - and lower airfares are often not available on all dates. Please see our "special airfares" section on our web site for any last minute airfare specials. Sample airfares will be updated each Tuesday.

**Blue highlighted numbers represent fare differentials in excess of \$35 for GSP, \$70 for CLT, \$100 for ATL, and \$35 for TRI.**

**Asheville Regional Airport**  
**Sample airfares as of 07/07/08**  
**21 Day Advance Purchase, 3 day Stay**

		Difference in Fares								
		ASHEVILLE	GREENVILLE	CHARLOTTE	ATLANTA	TRI-CITIES	GREENVILLE	CHARLOTTE	ATLANTA	TRI-CITIES
ABQ	Albuquerque	\$504	\$435	\$437	\$485	\$607	\$69	\$67	\$19	(\$103)
ATL	Atlanta	\$537		\$291	\$470	\$551	\$537	\$246	\$67	(\$14)
AUS	Austin	\$499	\$496	\$318	\$442	\$387	\$3	\$181	\$57	\$112
BWI	Baltimore	\$442	\$342	\$201	\$543	\$337	\$100	\$241	(\$101)	\$105
BOS	Boston	\$280	\$318	\$251	\$406	\$387	(\$38)	\$29	(\$126)	(\$107)
ORD	Chicago	\$240	\$384	\$412	\$442	\$337	(\$144)	(\$172)	(\$202)	(\$97)
CVG	Cincinnati	\$318	\$292	\$513	\$353	\$368	\$26	(\$195)	(\$35)	(\$50)
CLE	Cleveland	\$511	\$349	\$386	\$402	\$337	\$162	\$125	\$109	\$174
DFW	Dallas	\$591	\$351	\$418	\$462	\$467	\$240	\$173	\$129	\$124
DEN	Denver	\$530	\$399	\$456	\$522	\$437	\$131	\$74	\$8	\$93
DTW	Detroit	\$432	\$325	\$298	\$316	\$449	\$107	\$134	\$116	(\$17)
FLL	Fort Lauderdale	\$551	\$221	\$228	\$413	\$387	\$330	\$323	\$138	\$164
RSW	Ft. Myers	\$654	\$249	\$333	\$462	\$387	\$405	\$321	\$192	\$267
BDL	Hartford	\$407	\$398	\$258	\$235	\$387	\$9	\$149	\$172	\$20
IAH	Houston	\$472	\$362	\$473	\$645	\$580	\$110	(\$1)	(\$173)	(\$108)
IND	Indianapolis	\$387	\$291	\$218	\$235	\$337	\$96	\$169	\$152	\$50
JAX	Jacksonville	\$533	\$209	\$288	\$626	\$337	\$324	\$245	(\$93)	\$196
MCI	Kansas City	\$478	\$282	\$312	\$458	\$387	\$196	\$166	\$20	\$91
LAS	Las Vegas	\$780	\$328	\$379	\$548	\$536	\$452	\$401	\$232	\$244
LAX	Los Angeles	\$498	\$457	\$503	\$580	\$537	\$41	(\$5)	(\$82)	(\$39)
MHT	Manchester	\$280	\$385	\$277	\$425	\$387	(\$105)	\$3	(\$145)	(\$107)
MEM	Memphis	\$471	\$350	\$358	\$400	\$652	\$121	\$113	\$71	(\$181)
MIA	Miami	\$430	\$258	\$287	\$415	\$387	\$172	\$143	\$15	\$43
MKE	Milwaukee	\$613	\$262	\$276	\$393	\$385	\$351	\$337	\$220	\$228
MSP	Minneapolis/Saint Paul	\$501	\$311	\$471	\$506	\$387	\$190	\$30	(\$5)	\$114
BNA	Nashville	\$464	\$402	\$276	\$423	\$553	\$62	\$188	\$41	(\$89)
MSY	New Orleans	\$621	\$304	\$293	\$418	\$387	\$317	\$328	\$203	\$234
LGA	New York	\$555	\$291	\$267	\$503	\$407	\$264	\$288	\$52	\$148
EWR	Newark	\$417	\$448	\$281	\$293	\$387	(\$31)	\$136	\$124	\$30
MCO	Orlando	\$531	\$258	\$273	\$430	\$387	\$273	\$258	\$101	\$144
PHL	Philadelphia	\$280	\$368	\$277	\$271	\$280	(\$88)	\$3	\$9	\$0
PHX	Phoenix	\$623	\$330	\$338	\$548	\$537	\$293	\$285	\$75	\$86
PIT	Pittsburgh	\$508	\$278	\$218	\$405	\$337	\$230	\$290	\$103	\$171
PDX	Portland	\$771	\$449	\$398	\$548	\$637	\$322	\$373	\$223	\$134
PVD	Providence	\$240	\$356	\$277	\$235	\$240	(\$116)	(\$37)	\$5	\$0

**Asheville Regional Airport  
Sample airfares as of 07/07/08  
21 Day Advance Purchase, 3 day Stay**

RDU	Raleigh/Durham	\$869	\$209	\$367	\$430	\$337	\$660	\$502	\$439	\$532
RIC	Richmond	\$495	\$301	\$277	\$430	\$337	\$194	\$218	\$65	\$158
STL	Saint Louis	\$470	\$260	\$264	\$404	\$337	\$210	\$206	\$66	\$133
SLC	Salt Lake City	\$531	\$508	\$367	\$526	\$602	\$23	\$164	\$5	(\$71)
SAT	San Antonio	\$511	\$279	\$319	\$450	\$437	\$232	\$192	\$61	\$74
SAN	San Diego	\$700	\$389	\$404	\$548	\$537	\$311	\$296	\$152	\$163
SFO	San Francisco	\$680	\$442	\$378	\$589	\$537	\$238	\$302	\$91	\$143
SRQ	Sarasota/Bradenton	\$752	\$239	\$288	\$498	\$387	\$513	\$464	\$254	\$365
SEA	Seattle	\$667	\$453	\$567	\$548	\$540	\$214	\$100	\$119	\$127
SYR	Syracuse	\$371	\$482	\$198	\$445	\$387	(\$111)	\$173	(\$74)	(\$16)
TPA	Tampa	\$559	\$239	\$258	\$438	\$387	\$320	\$301	\$121	\$172
YYZ	Toronto	\$688	\$530	\$488	\$575	\$713	\$158	\$200	\$113	(\$25)
DCA	Washington DC	\$364	\$393	\$288	\$432	\$357	(\$29)	\$76	(\$68)	\$7
IAD	Washington DC	\$364	\$393	\$288	\$412	\$337	(\$29)	\$76	(\$48)	\$27
PBI	West Palm Beach	\$487	\$249	\$293	\$464	\$387	\$238	\$194	\$23	\$100
							\$171	\$177	\$60	\$79

**Average Fare difference**

\*These sample airfares were available 07/07/08, based on a 21 day advance purchase and a 3 day stay. Other restrictions may apply. To obtain the most up-to-date pricing information for your travel needs, please contact your professional travel agent or visit the following web sites: [www.continental.com](http://www.continental.com); [www.delta.com](http://www.delta.com); [www.nwa.com](http://www.nwa.com); [www.usairways.com](http://www.usairways.com); [www.travelocity.com](http://www.travelocity.com); [www.orbitz.com](http://www.orbitz.com); or [www.expedia.com](http://www.expedia.com). Airfares are subject to change without notice - and lower airfares are often not available on all dates. Please see our "special airfares" section on our web site for any last minute airfare specials. Sample airfares will be updated each Tuesday.

**Blue highlighted numbers represent fare differentials in excess of \$35 for GSP, \$70 for CLT, \$100 for ATL, and \$35 for TRI.**

**ASHEVILLE REGIONAL AIRPORT  
EXPLANATION OF EXTRAORDINARY VARIANCES  
MONTH ENDED May 31, 2008  
(Month 11 of FY-2008)**

**SUMMARY**

Operating Revenue (page 4 of 9) for the month of May was \$573,696; a decrease of 2.3% less than the budgeted amount. Year-to-date Operating Revenue is 7.36% or \$475,622 over the budget figure. Operating Expenses (page 4 of 9) were 4.41% lower than the budget amount on a year-to-date basis. Passenger Facility Charges earned were \$79,244. Income from Investments was \$18,033 for the month of May. Operating Revenue from operations and land use before depreciation was \$110,197 for the month of May 2008. With increased revenues to date from areas such as concessions, parking, landing fees and other space rentals, combined with continued efforts by staff to control expenses, our Year to date, Net Operating Income has exceeded budget by 59.2% or just over \$1.9 million.

**REVENUES**

Revenues from the Airfield and Parking Lot were lower than the budget amount. This is primarily the result of a slow down in passenger traffic and a decrease in aircraft operations in May related to the increase in fuel prices. Operating Revenue for the month of May 2008 was \$21,159 greater than the amount of Operating Revenue at the Airport for the month of May 2007 (\$552,537).

Year to date Operating Revenue is \$6,937,254; an increase of 7.36% over the budget figure.

**EXPENSES**

Total Operating Expenses for the month were .48 % higher than the budget amount and 4.41% under budget on a year to date basis. Expenses were over \$2,209 higher than the budget estimate for the period.

**STATEMENT OF NET ASSETS**

Unrestricted Net Assets increased almost \$241,081 over the month of April 2008. This brings the total increase year to date to over \$7 million.



**ASHEVILLE REGIONAL AIRPORT  
INVESTMENT AND INTEREST INCOME SUMMARY  
For the Month Ended May 2008**

<u>Institution:</u>	<u>Date of Purchase</u>	<u>Date of Maturity</u>	<u>Interest Rate</u>	<u>Investment Amount</u>	<u>Monthly Interest</u>
Bank of America			1.95%	\$ 854,165	\$ 2,410
Petty Cash				100	
NC Capital Trust				2,724,486	6,163
Restricted Cash:					
PFC Revenue Account			1.23%	936,384	951
DPS Checking-Restricted			0.05%	(48)	-
Wachovia-Gov. Advantage Acct.			1.43%	2,309,946	3,501
Rental Car Project Fund			1.80%	1,136,564	2,325
CFC Revenue			0.00%	1,044,694	142
<b><u>Commercial Paper:</u></b>					
Neptune Funding	03/13/08	06/13/08	3.01%	992,461	2,541
<b>Total</b>				<b><u>\$ 9,998,752</u></b>	<b><u>\$ 18,033</u></b>

**Investment Diversification:**

1.BANKS	28.36%
2.CAP.TRUST	27.25%
3.GOV.ADV.ACCT.	34.47%
4.COM.PAPER	9.93%
5. FED. AGY	0%
	<u>100.00%</u>

**ASHEVILLE REGIONAL AIRPORT  
STATEMENT OF CHANGES IN FINANCIAL POSITION  
For the Month Ended May 2008**

	<u>Month</u>	<u>Prior Period</u>
<b>Cash and Investments Beginning of Period (Month 5-01-08, Prior Period 4-01-08)</b>	<b>\$ 11,259,271</b>	<b>\$ 12,194,191</b>
Net Income before Contributions	(212,044)	(4,212)
Depreciation	475,946	244,979
Decrease/(Increase) in Receivables	(89,773)	(109,836)
Increase/(Decrease) in Payables	(1,131,578)	349,595
Decrease/(Increase) in Prepaid Expenses	(23,529)	(19,582)
Decrease/(Increase) in Long Term Assets	(236,948)	(1,282,782)
Contributed Capital		
Capital Funds	(36,240)	(100,016)
Carryback of Payments to Prior Period	23,105	16,249
Bonds Payable - Current	(29,458)	(29,316)
Bonds Payable - Non-Current		
<b>Increase(Decrease) in Cash</b>	<b><u>(1,260,519)</u></b>	<b><u>(934,921)</u></b>
<b>Cash and Investments End of Period (05/31/2008)</b>	<b><u>\$ 9,998,752</u></b>	<b><u>\$ 11,259,270</u></b>

Asheville Regional Airport Authority  
Statement of Revenue, Expenses and Changes in Net Assets

For the Eleven Months Ending May 31, 2008

	May Actual	May Budget	Variance %	YTD Actual	YTD Budget	Variance %	Annual Budget
<b>Operating Revenue:</b>							
Terminal	\$178,382	\$143,857	24.00%	\$2,352,861	\$1,582,426	48.69%	\$1,531,383
Airfield	73,342	86,574	(15.28%)	1,054,297	952,316	10.71%	1,403,790
Hangar	59,720	54,044	10.50%	612,030	594,481	2.95%	648,525
Parking Lot/Roadway	249,876	288,821	(13.48%)	2,772,554	3,177,032	(12.73%)	3,307,252
Land Use Fees	12,376	14,125	(12.38%)	145,512	155,377	(6.35%)	158,102
<b>Total Operating Revenue</b>	<b>\$573,696</b>	<b>\$587,421</b>	<b>(2.34%)</b>	<b>\$6,937,254</b>	<b>\$6,461,632</b>	<b>7.36%</b>	<b>\$7,049,052</b>
<b>Operating Expenses:</b>							
Administrative	\$125,837	\$125,237	0.48%	\$2,315,047	\$2,081,704	11.21%	\$2,205,630
Terminal	211,224	210,217	0.48%	1,549,570	1,800,127	(13.92%)	2,010,344
Airfield	101,249	100,767	0.48%	821,908	1,108,435	(25.85%)	1,209,202
Hangar				9,942			
Parking Lot	24,571	24,454	0.48%	335,434	268,996	24.70%	293,450
Land Use Expenses	618	615	0.49%	1,936	6,765	(71.38%)	7,380
<b>Total Operating Expenses</b>	<b>\$463,499</b>	<b>\$461,290</b>	<b>0.48%</b>	<b>\$5,033,837</b>	<b>\$5,266,027</b>	<b>(4.41%)</b>	<b>\$5,726,006</b>
<b>Operating Revenue before Depreciation</b>	<b>\$110,197</b>	<b>\$126,131</b>	<b>(12.63%)</b>	<b>\$1,903,417</b>	<b>\$1,195,605</b>	<b>59.20%</b>	<b>\$1,323,046</b>
Depreciation	475,946	247,359	92.41%	2,943,597	2,720,944	8.18%	2,968,302
<b>Operating Income(Loss) Before Non-Operating Revenue and Expenses</b>	<b>(\$365,749)</b>	<b>(\$121,228)</b>	<b>201.70%</b>	<b>(\$1,040,180)</b>	<b>(\$1,525,339)</b>	<b>(31.81%)</b>	<b>(\$1,645,256)</b>
<b>Non-Operating Revenue and Expense</b>							
Customer Facility Charges	56,428	62,500	(9.72%)	682,075	687,500	(0.79%)	750,000
Passenger Facility Charges	79,244	100,000	(20.76%)	983,748	1,100,000	(10.57%)	1,200,000
Interest Revenue	18,033	37,125	(51.43%)	476,836	408,375	16.76%	445,500
Sale of Assets				60		0.00%	
<b>Non-Operating Revenue-Net</b>	<b>\$153,705</b>	<b>\$199,625</b>	<b>(23.00%)</b>	<b>\$2,142,719</b>	<b>\$2,195,875</b>	<b>(2.42%)</b>	<b>\$2,395,500</b>
<b>Income (Loss) Before Capital Contributions</b>	<b>(\$212,044)</b>	<b>\$78,397</b>	<b>(370.47%)</b>	<b>\$1,102,539</b>	<b>\$670,536</b>	<b>64.43%</b>	<b>\$750,244</b>
Capital Contributions	\$0	\$0	0.00%	\$1,172,627	\$0	0.00%	\$0
<b>Increase in Net Assets</b>	<b>(\$212,044)</b>	<b>\$78,397</b>	<b>(370.47%)</b>	<b>\$2,275,166</b>	<b>\$670,536</b>	<b>239.31%</b>	<b>\$750,244</b>

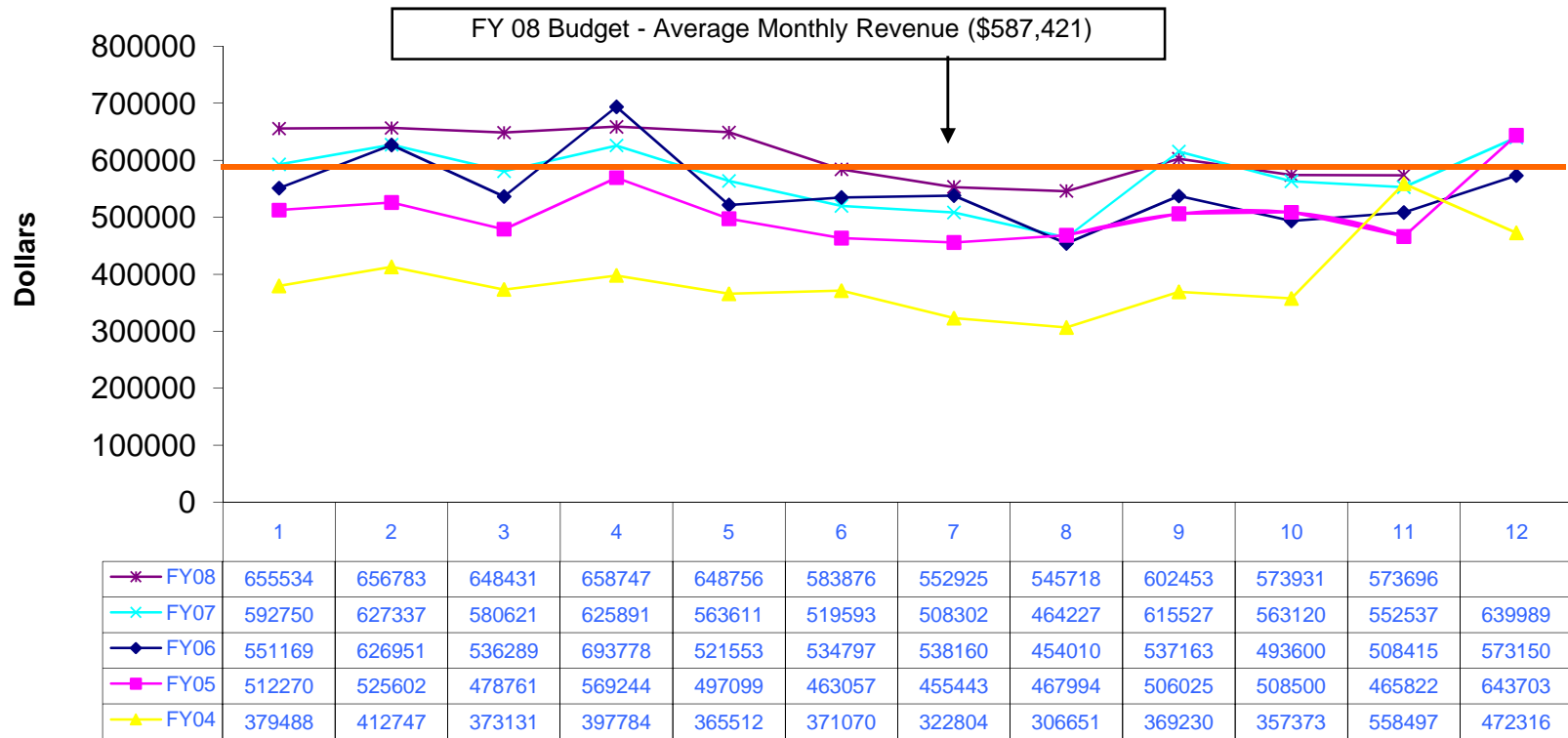
**ASHEVILLE REGIONAL AIRPORT AUTHORITY**  
**STATEMENT OF FINANCIAL POSITION**  
**May 31, 2008**

	<b>May</b>	<b>Last Month</b>
<b>ASSETS</b>		
<b>Current Assets</b>		
<b>Unrestricted Net Assets:</b>		
Cash and Cash Equivalents	\$3,578,751	\$3,943,024
Investments	992,461	992,461
Accounts Receivable	1,780,194	1,690,421
Prepaid Expenses	126,930	150,459
<b>Total Unrestricted Assets</b>	<b>6,478,336</b>	<b>6,776,365</b>
<b>Restricted Assets:</b>		
Capital Funds	209,542	173,302
Cash and Cash Equivalents	5,427,540	6,323,785
Receivables		
Passenger Facility Charge Funds:		
Receivables		
<b>Total Restricted Assets</b>	<b>5,637,082</b>	<b>6,497,087</b>
<b>Total Current Assets</b>	<b>12,115,418</b>	<b>13,273,452</b>
<b>Noncurrent Assets</b>		
Capital Assets	13,056,790	12,819,842
Property and Equipment - Net	38,593,172	39,069,093
<b>TOTAL ASSETS</b>	<b>\$63,765,380</b>	<b>\$65,162,387</b>
 <b>LIABILITIES AND NET ASSETS</b>		
<b>Liabilities</b>		
Accounts Payable	\$278,659	\$1,411,368
<b>Total Payable from Unrestricted Assets</b>	<b>278,659</b>	<b>1,411,368</b>
<b>Payable from Restricted Assets:</b>		
Construction Contracts Payable	605,319	605,319
Construction Contract Retainages	155,790	155,790
Bonds Payable - Current Portion	29,600	59,058
<b>Total Payable From Restricted Assets</b>	<b>790,709</b>	<b>820,167</b>
<b>Total Current Liabilities</b>	<b>1,069,368</b>	<b>2,231,535</b>
<b>Non-Current Liabilities:</b>		
Rental Car Project Bond	4,661,626	4,661,626
<b>Total Non-Current Liabilities</b>	<b>4,661,626</b>	<b>4,661,626</b>
<b>Total Liabilities</b>	<b>5,730,994</b>	<b>6,893,161</b>
<b>Net Assets:</b>		
Invested in Capital Assets	38,593,172	39,069,093
<b>Unrestricted</b>	<b>19,441,214</b>	<b>19,200,133</b>
<b>Total Net Assets</b>	<b>58,034,386</b>	<b>58,269,226</b>
<b>TOTAL LIABILITIES</b>	<b>\$63,765,380</b>	<b>\$65,162,387</b>

# ASHEVILLE REGIONAL AIRPORT

## Annual Operating Revenue by Month

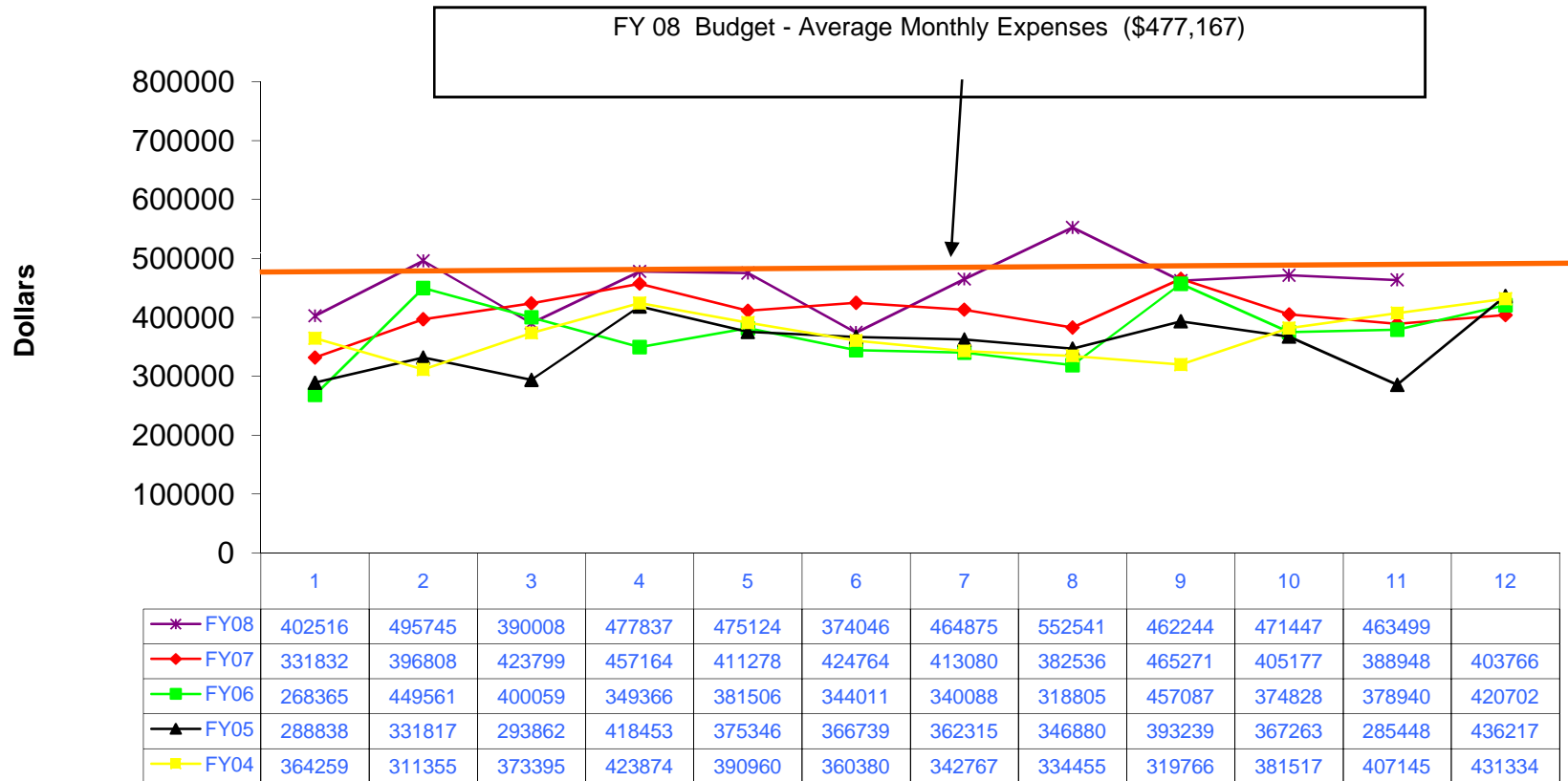
### May 2008



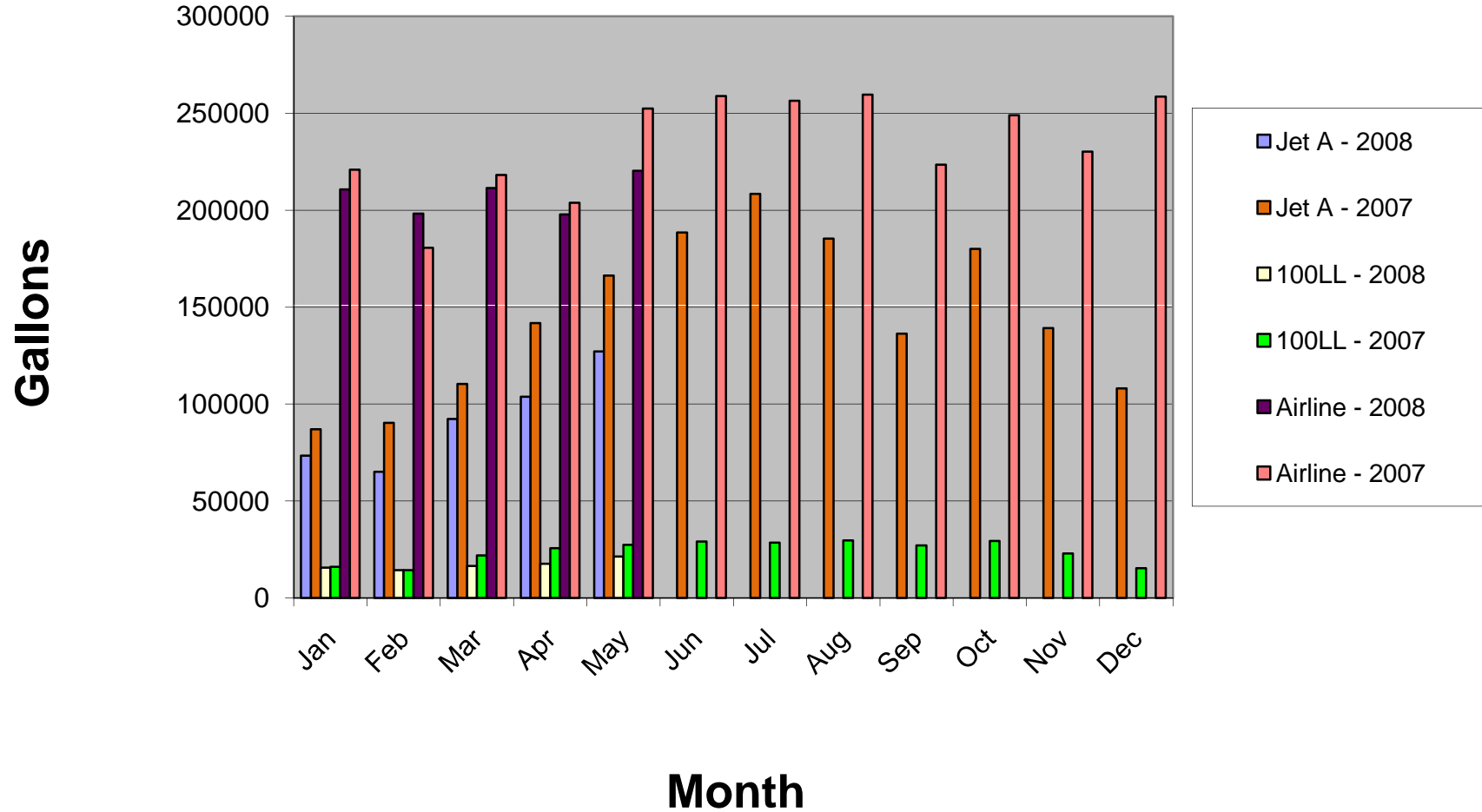
# ASHEVILLE REGIONAL AIRPORT

## Annual Operating Expenses by Month

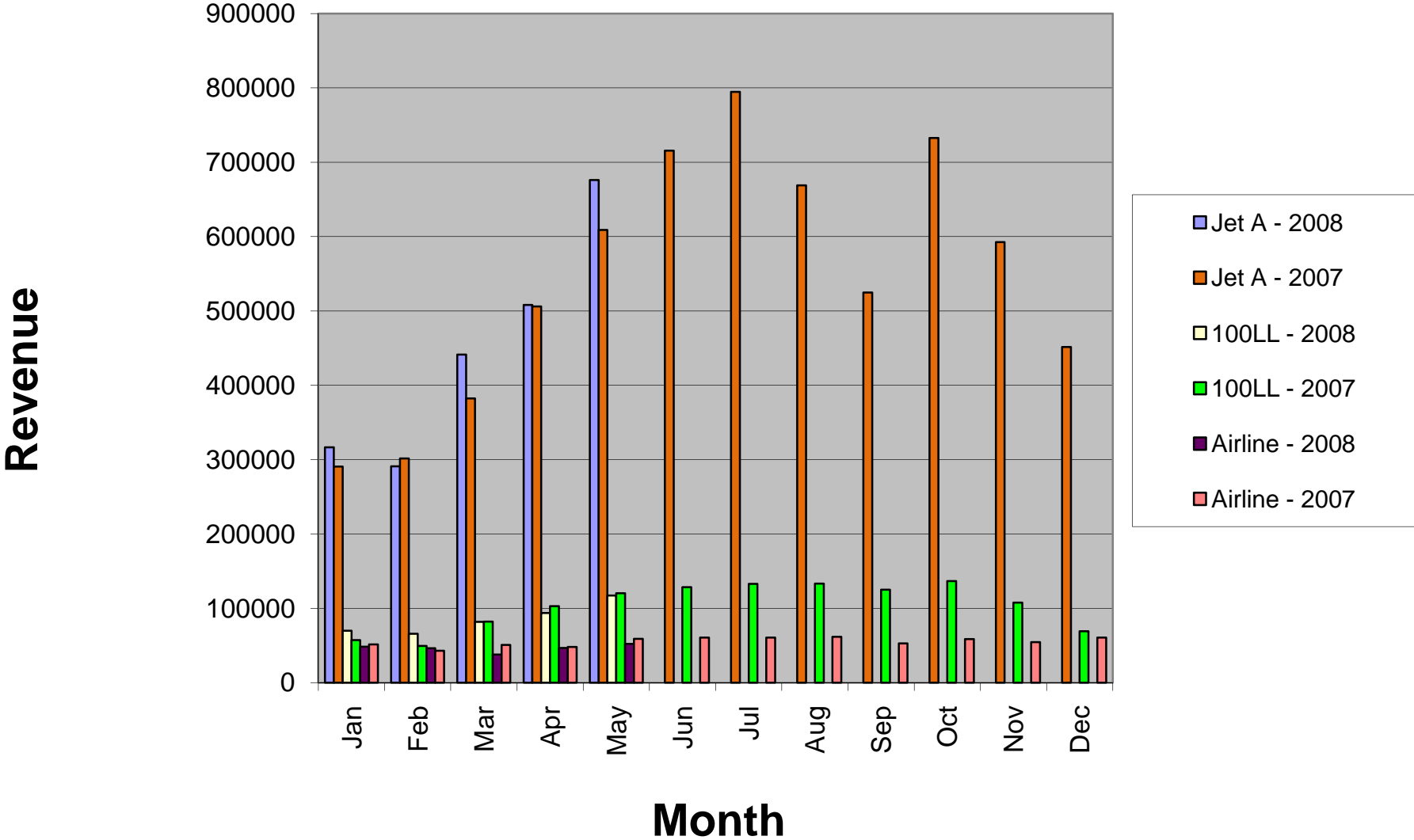
### May 2008



# AVL Fuels Sales - Gallons May 2008



# AVL Fuels Sales - Revenue May 2008



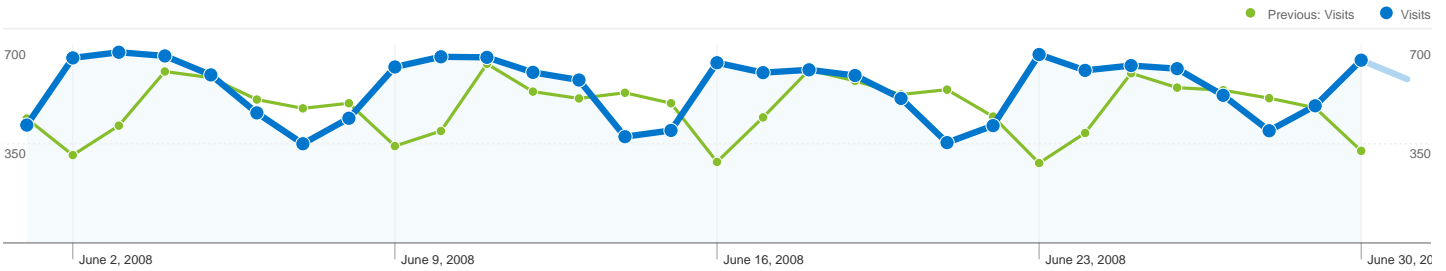




## MARKETING & PUBLIC RELATIONS REPORT

July, 2008

- Art in the Airport –The sixth exhibit will be on display from July 18, 2008, until November 4, 2008 and features eight artists. The art includes oil on canvas, carving on aluminum, metal/copper pieces and graphite works. From exhibit five, three pieces were sold for a total of \$1525.00. The Authority's commission is \$305.00
- Completed artwork for WNC Magazine; Rutherford County Newcomer Guide, Southern Living – Florida Living and Midwest Living Editions.
- Participated in the Asheville Chamber of Commerce Annual Meeting; Butterfly Exhibit opening at the WNC Nature Center - also had booth at Nectar Collector event the following day.
- Attended the ATME (Association of Travel Marketing Executives Conference) as well as the ACI (Airports Council International) Marketing Communications Conference/Jumpstart.
- Working on FY 08/09 advertising and closing out FY 07/08
- Completed staff evaluations and goals for new FY.
- Asheville Tourists Summer Fly-away Promotion continues. Star 104.3 winner was drawn for the third of three promotions live in their studio.
- Website Statistics - Google Analytics: See attached data regarding June activity at [www.flyavl.com](http://www.flyavl.com)
- Booking Engine Statistics – Since the booking engine premiere (April 15, 2007) AVL has had a total of 748 hotel, air and rental car reservations for a total of \$5656.00 in booking fees collected.



**Site Usage**

**16,404 Visits**  
 Previous: 14,352 (14.30%)

**35.35% Bounce Rate**  
 Previous: 34.11% (3.63%)

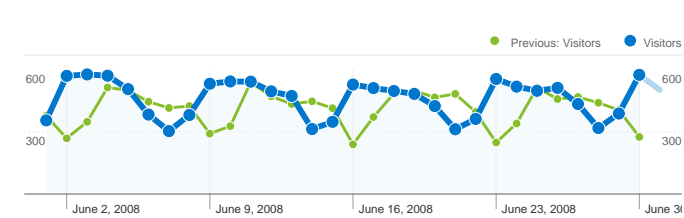
**63,914 Pageviews**  
 Previous: 58,778 (8.74%)

**00:06:55 Avg. Time on Site**  
 Previous: 00:07:29 (-7.66%)

**3.90 Pages/Visit**  
 Previous: 4.10 (-4.86%)

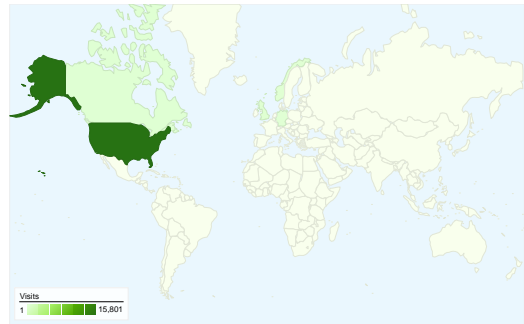
**67.02% % New Visits**  
 Previous: 70.84% (-5.39%)

**Visitors Overview**

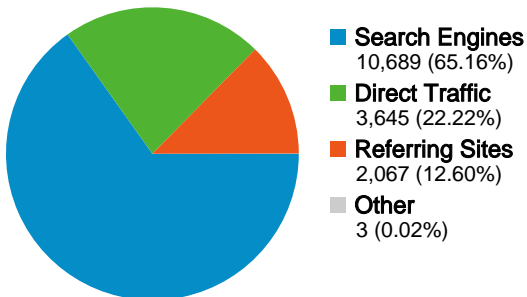


**Visitors**  
**12,160**

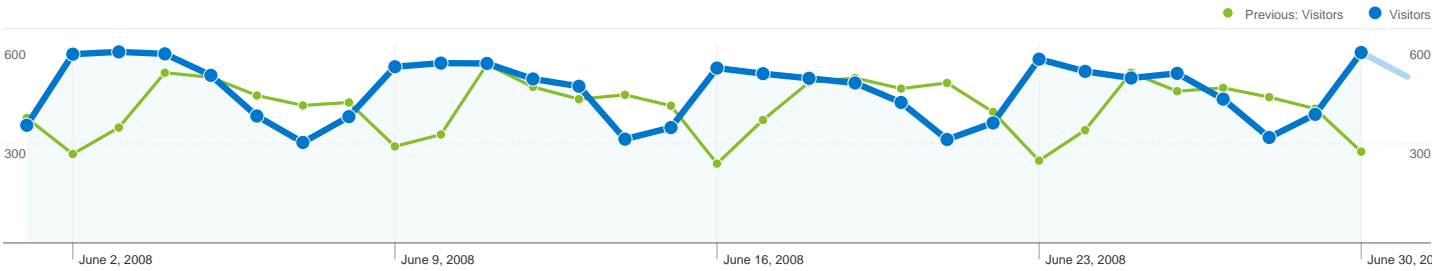
**Map Overlay world**



**Traffic Sources Overview**



Content Overview		
Pages	Pageviews	% Pageviews
/		
Jun 1, 2007 - Jun 30, 2007	20,629	35.10%
Jun 1, 2008 - Jun 30, 2008	19,024	29.76%
% Change	-7.78%	-7.78%
/flights/flight-view---real-time.html		
Jun 1, 2007 - Jun 30, 2007	5,773	9.82%
Jun 1, 2008 - Jun 30, 2008	8,210	12.85%
% Change	42.21%	42.21%
/flights/arrivals---real-time.html		
Jun 1, 2007 - Jun 30, 2007	2,856	4.86%
Jun 1, 2008 - Jun 30, 2008	2,869	4.49%
% Change	0.46%	0.46%
/rental-cars/		
Jun 1, 2007 - Jun 30, 2007	1,253	2.13%
Jun 1, 2008 - Jun 30, 2008	1,677	2.62%
% Change	33.84%	33.84%
/flights/flight-schedule-search.html		
Jun 1, 2007 - Jun 30, 2007	877	1.49%
Jun 1, 2008 - Jun 30, 2008	1,621	2.54%
% Change	84.83%	84.83%



## 12,160 people visited this site

**16,404 Visits**  
Previous: 14,352 (14.30%)

**12,160 Absolute Unique Visitors**  
Previous: 10,885 (11.71%)

**63,914 Pageviews**  
Previous: 58,778 (8.74%)

**3.90 Average Pageviews**  
Previous: 4.10 (-4.86%)

**00:06:55 Time on Site**  
Previous: 00:07:29 (-7.66%)

**35.35% Bounce Rate**  
Previous: 34.11% (3.63%)

**67.23% New Visits**  
Previous: 70.83% (-5.07%)

## Technical Profile

Browser	Visits	% visits
<b>Internet Explorer</b>		
Jun 1, 2007 - Jun 30, 2007	11,598	80.81%
Jun 1, 2008 - Jun 30, 2008	12,388	75.52%
% Change	6.81%	6.81%
<b>Firefox</b>		
Jun 1, 2007 - Jun 30, 2007	1,922	13.39%
Jun 1, 2008 - Jun 30, 2008	2,941	17.93%
% Change	53.02%	53.02%
<b>Safari</b>		
Jun 1, 2007 - Jun 30, 2007	664	4.63%
Jun 1, 2008 - Jun 30, 2008	890	5.43%

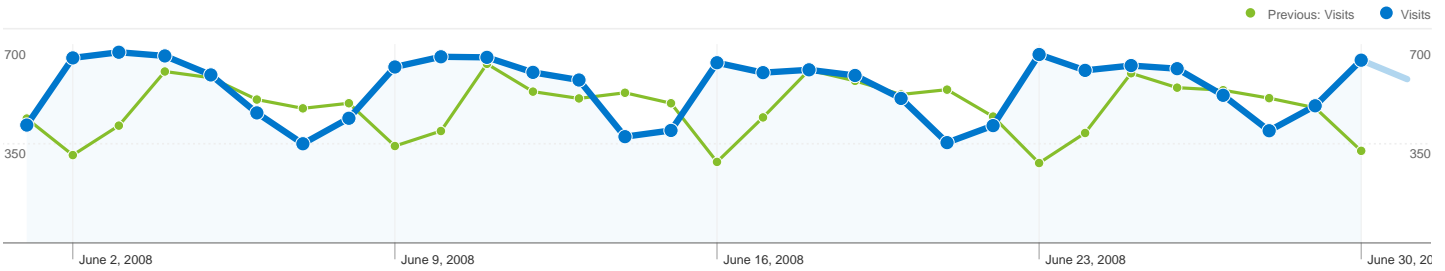
Connection Speed	Visits	% visits
<b>Cable</b>		
Jun 1, 2007 - Jun 30, 2007	4,233	29.49%
Jun 1, 2008 - Jun 30, 2008	5,871	35.79%
% Change	38.70%	38.70%
<b>DSL</b>		
Jun 1, 2007 - Jun 30, 2007	3,814	26.57%
Jun 1, 2008 - Jun 30, 2008	4,191	25.55%
% Change	9.88%	9.88%
<b>Unknown</b>		
Jun 1, 2007 - Jun 30, 2007	3,854	26.85%
Jun 1, 2008 - Jun 30, 2008	3,843	23.43%

% Change	34.04%	34.04%
Opera		
Jun 1, 2007 - Jun 30, 2007	50	0.35%
Jun 1, 2008 - Jun 30, 2008	113	0.69%
% Change	126.00%	126.00%
Mozilla		
Jun 1, 2007 - Jun 30, 2007	29	0.20%
Jun 1, 2008 - Jun 30, 2008	34	0.21%
% Change	17.24%	17.24%

% Change	-0.29%	-0.29%
T1		
Jun 1, 2007 - Jun 30, 2007	1,328	9.25%
Jun 1, 2008 - Jun 30, 2008	1,457	8.88%
% Change	9.71%	9.71%
Dialup		
Jun 1, 2007 - Jun 30, 2007	905	6.31%
Jun 1, 2008 - Jun 30, 2008	768	4.68%
% Change	-15.14%	-15.14%

# Traffic Sources Overview

Jun 1, 2008 - Jun 30, 2008  
Comparing to: Jun 1, 2007 - Jun 30, 2007



All traffic sources sent a total of 16,404 visits



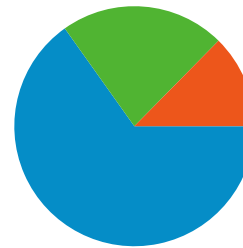
**22.22% Direct Traffic**  
Previous: 19.93% (11.50%)



**12.60% Referring Sites**  
Previous: 16.39% (-23.14%)



**65.16% Search Engines**  
Previous: 63.66% (2.36%)



- **Search Engines**  
10,689 (65.16%)
- **Direct Traffic**  
3,645 (22.22%)
- **Referring Sites**  
2,067 (12.60%)
- **Other**  
3 (0.02%)

## Top Traffic Sources

Sources	Visits	% visits
<b>google (organic)</b>		
Jun 1, 2007 - Jun 30, 2007	6,654	46.36%
Jun 1, 2008 - Jun 30, 2008	8,417	51.31%
% Change	26.50%	26.50%
<b>(direct) ((none))</b>		
Jun 1, 2007 - Jun 30, 2007	2,860	19.93%
Jun 1, 2008 - Jun 30, 2008	3,645	22.22%
% Change	27.45%	27.45%
<b>yahoo (organic)</b>		
Jun 1, 2007 - Jun 30, 2007	1,269	8.84%
Jun 1, 2008 - Jun 30, 2008	1,132	6.90%
% Change	-10.80%	-10.80%
<b>msn (organic)</b>		
Jun 1, 2007 - Jun 30, 2007	479	3.34%
Jun 1, 2008 - Jun 30, 2008	379	2.31%
% Change	-20.88%	-20.88%
<b>aol (organic)</b>		
Jun 1, 2007 - Jun 30, 2007	293	2.04%

Keywords	Visits	% visits
<b>asheville airport</b>		
Jun 1, 2007 - Jun 30, 2007	3,228	35.33%
Jun 1, 2008 - Jun 30, 2008	3,440	32.18%
% Change	6.57%	6.57%
<b>asheville regional airport</b>		
Jun 1, 2007 - Jun 30, 2007	1,025	11.22%
Jun 1, 2008 - Jun 30, 2008	1,026	9.60%
% Change	0.10%	0.10%
<b>asheville nc airport</b>		
Jun 1, 2007 - Jun 30, 2007	669	7.32%
Jun 1, 2008 - Jun 30, 2008	718	6.72%
% Change	7.32%	7.32%
<b>asheville, nc airport</b>		
Jun 1, 2007 - Jun 30, 2007	459	5.02%
Jun 1, 2008 - Jun 30, 2008	457	4.28%
% Change	-0.44%	-0.44%
<b>avl</b>		
Jun 1, 2007 - Jun 30, 2007	221	2.42%

---

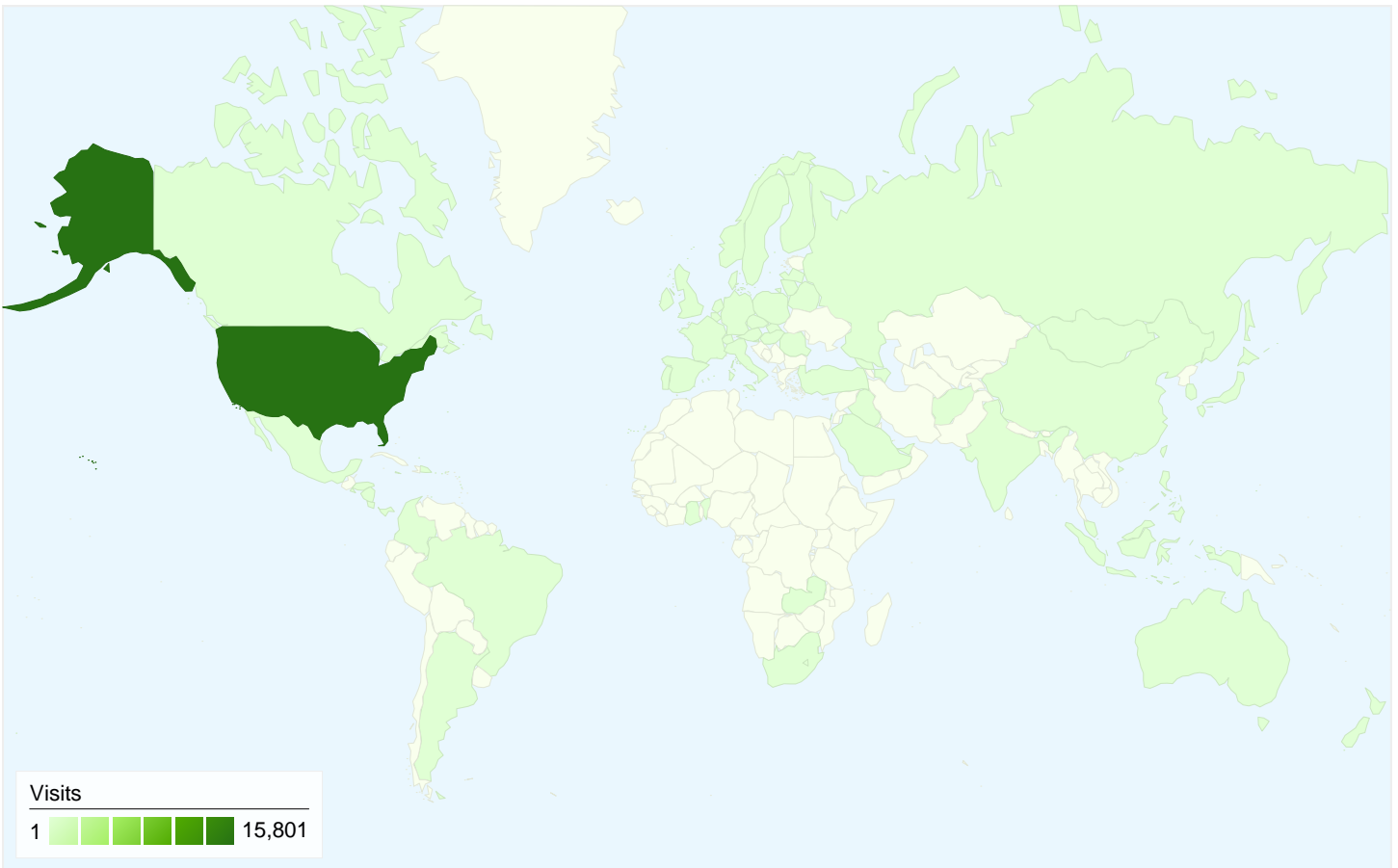
Jun 1, 2008 - Jun 30, 2008	303	1.85%
% Change	3.41%	3.41%

---

---

Jun 1, 2008 - Jun 30, 2008	403	3.77%
% Change	82.35%	82.35%

---



### 16,404 visits came from 75 countries/territories

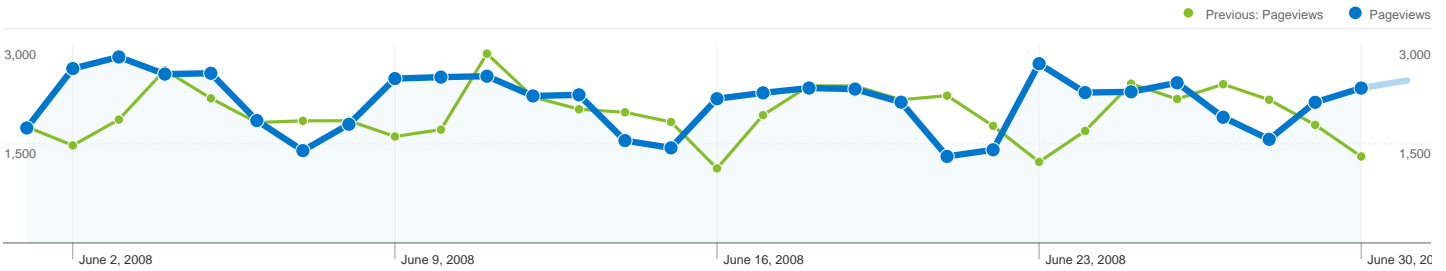
#### Site Usage

<b>Visits</b> <b>16,404</b> Previous: 14,352 (14.30%)	<b>Pages/Visit</b> <b>3.90</b> Previous: 4.10 (-4.86%)	<b>Avg. Time on Site</b> <b>00:06:55</b> Previous: 00:07:29 (-7.66%)	<b>% New Visits</b> <b>67.23%</b> Previous: 70.82% (-5.06%)	<b>Bounce Rate</b> <b>35.35%</b> Previous: 34.11% (3.63%)	
Country/Territory	Visits	Pages/Visit	Avg. Time on Site	% New Visits	Bounce Rate
<b>United States</b>					
June 1, 2008 - June 30, 2008	15,801	3.93	00:07:04	67.00%	34.93%
June 1, 2007 - June 30, 2007	13,842	4.12	00:07:37	70.64%	33.85%
% Change	14.15%	-4.63%	-7.22%	-5.16%	3.22%
<b>United Kingdom</b>					
June 1, 2008 - June 30, 2008	119	3.38	00:02:40	69.75%	35.29%
June 1, 2007 - June 30, 2007	83	2.98	00:01:57	78.31%	39.76%
% Change	43.37%	13.52%	37.65%	-10.94%	-11.23%
<b>Canada</b>					
June 1, 2008 - June 30, 2008	91	3.70	00:02:22	84.62%	41.76%




June 1, 2007 - June 30, 2007	69	5.07	00:04:57	69.57%	40.58%
% Change	31.88%	-26.99%	-52.31%	21.63%	2.90%
<b>Norway</b>					
June 1, 2008 - June 30, 2008	56	1.64	00:06:47	0.00%	57.14%
June 1, 2007 - June 30, 2007	19	5.26	00:30:10	100.00%	10.53%
% Change	194.74%	-68.79%	-77.50%	-100.00%	442.86%
<b>Germany</b>					
June 1, 2008 - June 30, 2008	34	4.41	00:03:02	88.24%	35.29%
June 1, 2007 - June 30, 2007	44	3.16	00:03:04	68.18%	36.36%
% Change	-22.73%	39.65%	-1.40%	29.41%	-2.94%
<b>India</b>					
June 1, 2008 - June 30, 2008	25	1.68	00:01:26	84.00%	56.00%
June 1, 2007 - June 30, 2007	18	3.22	00:02:39	66.67%	27.78%
% Change	38.89%	-47.86%	-45.72%	26.00%	101.60%
<b>Japan</b>					
June 1, 2008 - June 30, 2008	22	3.73	00:03:03	59.09%	40.91%
June 1, 2007 - June 30, 2007	17	4.12	00:02:57	76.47%	41.18%
% Change	29.41%	-9.48%	3.62%	-22.73%	-0.65%
<b>Australia</b>					
June 1, 2008 - June 30, 2008	18	2.28	00:01:56	88.89%	61.11%
June 1, 2007 - June 30, 2007	9	2.56	00:01:12	100.00%	44.44%
% Change	100.00%	-10.87%	61.21%	-11.11%	37.50%
<b>Netherlands</b>					
June 1, 2008 - June 30, 2008	16	2.81	00:00:57	68.75%	37.50%
June 1, 2007 - June 30, 2007	12	2.50	00:00:32	75.00%	58.33%
% Change	33.33%	12.50%	79.03%	-8.33%	-35.71%
<b>Ireland</b>					
June 1, 2008 - June 30, 2008	14	1.93	00:01:49	92.86%	71.43%
June 1, 2007 - June 30, 2007	14	3.36	00:03:28	78.57%	35.71%
% Change	0.00%	-42.55%	-47.80%	18.18%	100.00%


1 - 10 of 75



## Pages on this site were viewed a total of 63,914 times

 **63,914 Pageviews**  
Previous: 58,778 (8.74%)

 **41,638 Unique Views**  
Previous: 37,856 (9.99%)

 **35.35% Bounce Rate**  
Previous: 34.11% (3.63%)

## Top Content

Pages	Pageviews	% Pageviews
/		
Jun 1, 2007 - Jun 30, 2007	20,629	35.10%
Jun 1, 2008 - Jun 30, 2008	19,024	29.76%
% Change	-7.78%	-7.78%
/flights/flight-view---real-time.html		
Jun 1, 2007 - Jun 30, 2007	5,773	9.82%
Jun 1, 2008 - Jun 30, 2008	8,210	12.85%
% Change	42.21%	42.21%
/flights/arrivals---real-time.html		
Jun 1, 2007 - Jun 30, 2007	2,856	4.86%
Jun 1, 2008 - Jun 30, 2008	2,869	4.49%
% Change	0.46%	0.46%
/rental-cars/		
Jun 1, 2007 - Jun 30, 2007	1,253	2.13%
Jun 1, 2008 - Jun 30, 2008	1,677	2.62%
% Change	33.84%	33.84%
/flights/flight-schedule-search.html		
Jun 1, 2007 - Jun 30, 2007	877	1.49%

Jun 1, 2008 - Jun 30, 2008	1,621	2.54%
% Change	84.83%	84.83%

**Asheville Regional Airport Authority**  
**Project Report - July 2008**

Project Number	Project Name	Project Description	Professional Services Consultant	Professional Services Contract	General Contractor	Original Construction Contract	Change Orders (thru 05/31/08)	Percent of Original Contract	Total Project Cost	Percent Complete	Expensed to Date (thru 05/31/08)	Start Date	End Date	Current Project Status (as of 7/1/08)
<b>Planning Phase</b>														
1	Landside Access, Roadway and Parking Planning and Programming	This project involves the concept evaluation and planning study for landside roadway access and parking areas for the airport.	WK Dickson	\$169,812.00	na	na	na	na	\$169,812.00	80%	\$141,719.22	Dec-07		Alternative concepts and modifications are being reviewed based on the comments received at the April 11 Board meeting. A revised presentation is planned for the August 8 Authority Board meeting
<b>Design Phase</b>														
2	22,000 Sq Ft Bulk Hangar - 168 Wright Brothers Way	A 22,000 sq ft bulk hangar will be constructed on existing ramp area adjacent to the Lacy Griffin Building. The hangar will be under a management agreement with Million Air.	LPA Group	\$265,535.00	na	na	na	na	\$265,535.00	95%	\$85,976.70	Dec-07		The Hangar Project at 168 Wright Brothers Way has received all required approvals from the Technical Review Committee, Planning and Zoning Commission and City Council. Permit Review is now underway. The project will be publicly bid immediately after permit review is finalized
<b>Construction Phase</b>														
3	Terminal Renovation and Expansion - Phase 1	The Terminal Renovation and Expansion - Phase 1 Project includes enlarging the baggage claim area and airline ticket office areas. Improvements and modifications include additional square footage and increased baggage capacity.	SchenkelShultz	\$614,300.00	Perry Bartsch Jr.	\$ 4,479,000.00	\$93,282.00	2.09%	\$5,186,582.00	50%	\$ 2,076,073.05	Jul-06	Sep-08	Interior drywall work is underway. Electrical, mechanical and plumbing rough-in continues.
4	Security System & Access Control Project	The Security System & Access Control Project includes the design and professional services for replacing and improving the current ACS and CCTV systems.	Faith Group	\$185,870.00	I-Sys	\$ 1,473,984.00	\$153,251.21	10.40%	\$1,813,105.21	90%	\$ 1,279,898.89	Jul-06	Jul-08	ACS and CCTV installation is wrapping up. Testing and certification is scheduled for the third week of July..
5	North General Aviation Expansion Project	The North GA project includes multiple phases; phase one consisted of tree harvesting and logging operations, phase two included clearing and grubbing of the site and phase three involves the placement and compaction of structural fill material for the site.	WK Dickson	\$0.00	Charah	\$ -	\$0.00	0.00%	\$3,000,000.00	35%	\$ 565,126.87	Nov-07	May-09	Placement of fill material has moved into phase 2. DWQ 404 permit process is underway.
<b>Close-Out Phase</b>														
6	Consolidated Rental Car Service Facility	The Rental Car Service Facility will include service and storage facilities for 5 rental car companies. The facilities include areas for maintenance, car wash, fuel, vacuum and parking storage.	LPA Group	\$525,920.10	Buncombe Construction Co.	\$6,778,500.00	\$84,929.00	1.25%	\$7,389,349.10	99%	\$ 6,983,610.32	Apr-07	Jul-08	The contractor is completing the required close out documentation.
7	Regional Boarding Ramp Project	The Regional Boarding Ramp (RBR) Project includes the purchase and installation of regional boarding ramps, pre-conditioned air units, and 400hz fixed ground power units at the "B" Boarding gate positions.	RS&H	\$24,500.00	Construction Logic	\$780,810.00	-\$73,233.00	-9.29%	\$1,343,000.00	99%	\$ 1,045,092.33	Oct-06	Jul-08	The RBR units are fully installed and the airlines are utilizing them for loading and unloading passengers. The contractor is completing the required close out documentation.