



Asheville Regional Airport Master Plan Update

Greater Asheville Regional Airport
Authority

Public Information Meeting

October 26, 2023





Master Plan Overview/Forecast



What Is An Airport Master Plan?

- Guides the airport's development and operational sustainability
- Two Parts
 - *Master Plan Report*
 - *Airport Layout Plan (ALP) (drawing set)*
- Covers 5, 10, and 20-year horizons
- Updated every 10 years
- Follows FAA guidance and standards



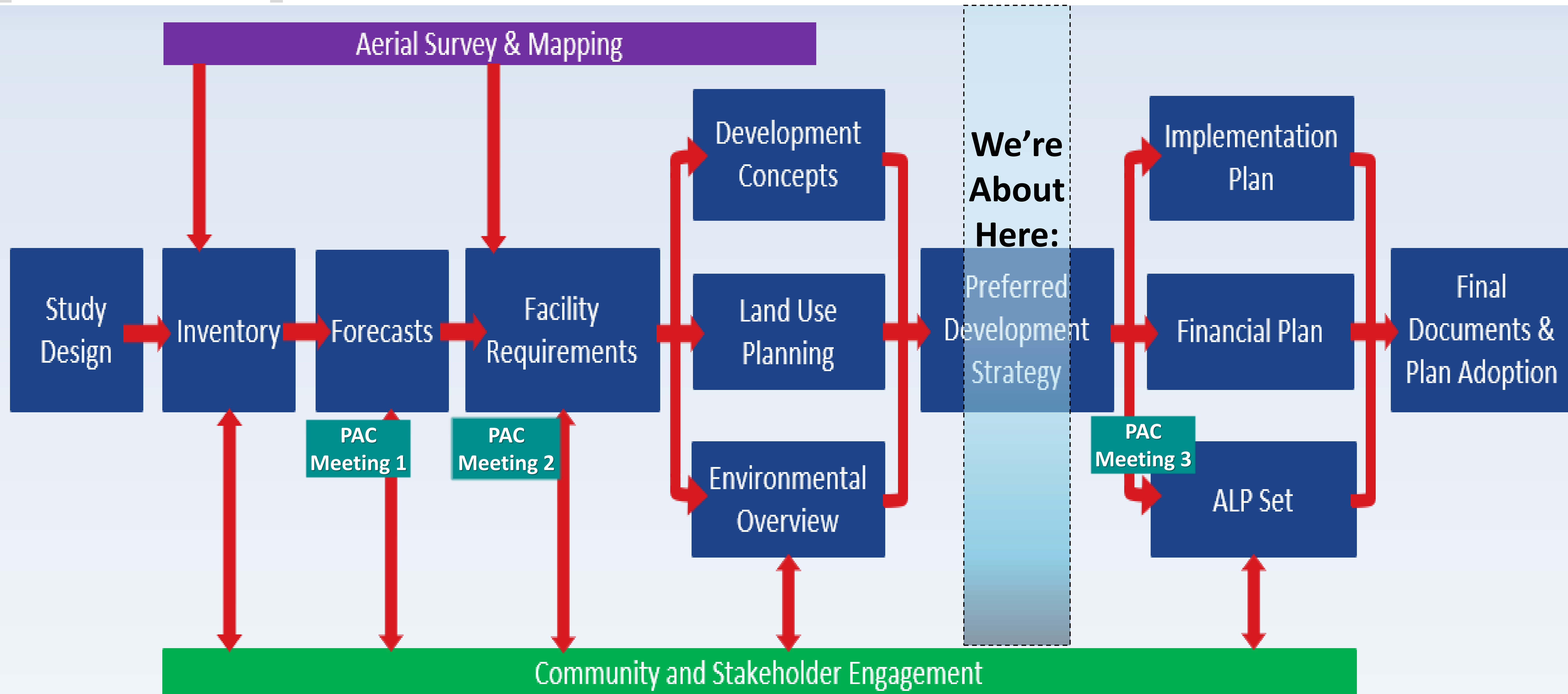


Why Do An Airport Master Plan?

- Facilitate modernization and expansion
- Meet foreseeable aviation demand and customer needs
- Ensure that future development is:
 - Planned and logical
 - Feasible and flexible
 - Fiscally responsible
 - Environmentally compatible
 - Regionally supported
- Promote customer convenience and competitive advantage
- Allow for federal funding on eligible projects



Airport Master Planning Process

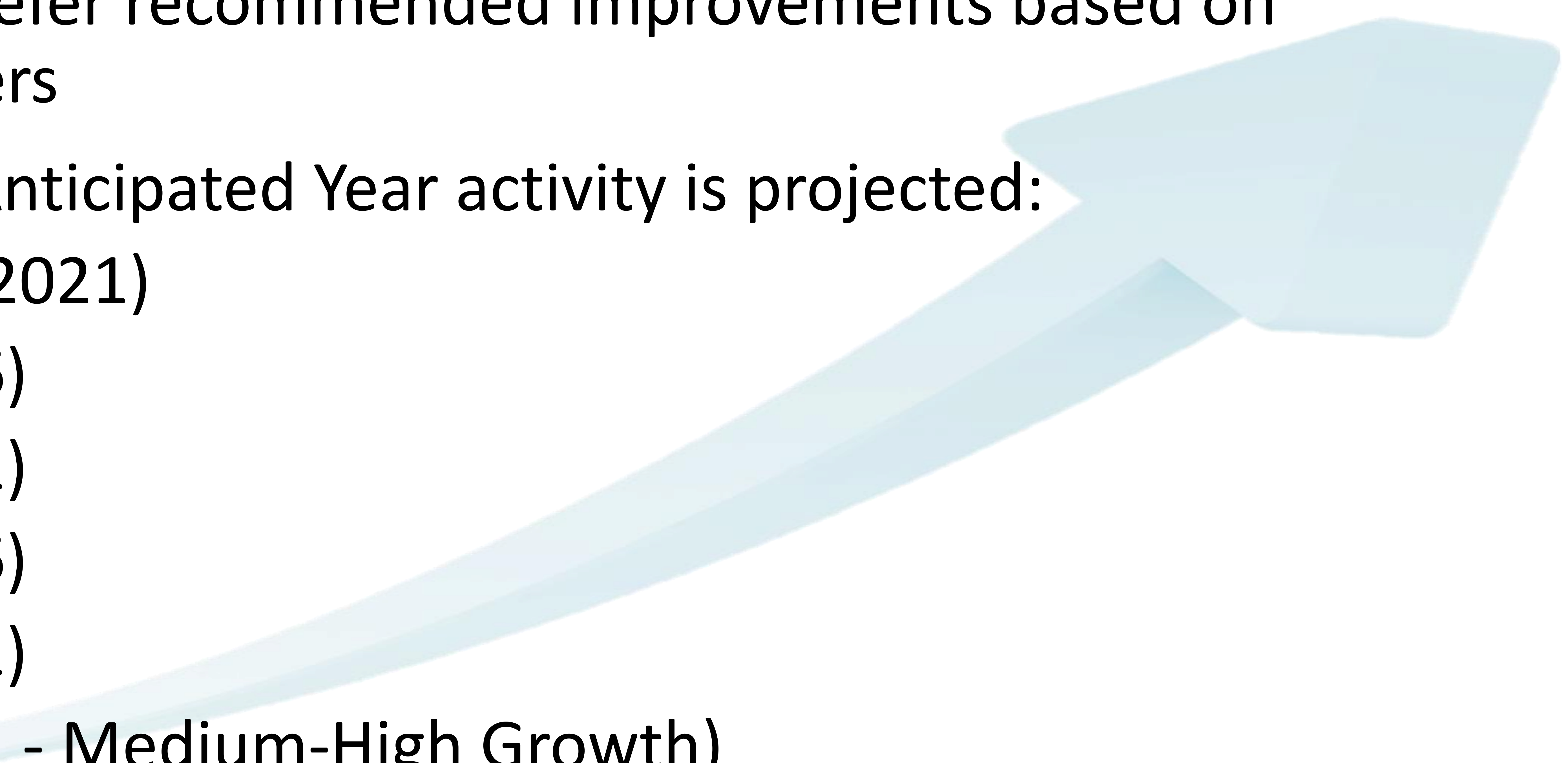


← Approximate 18-month process →



Planning Activity Levels (PALs)

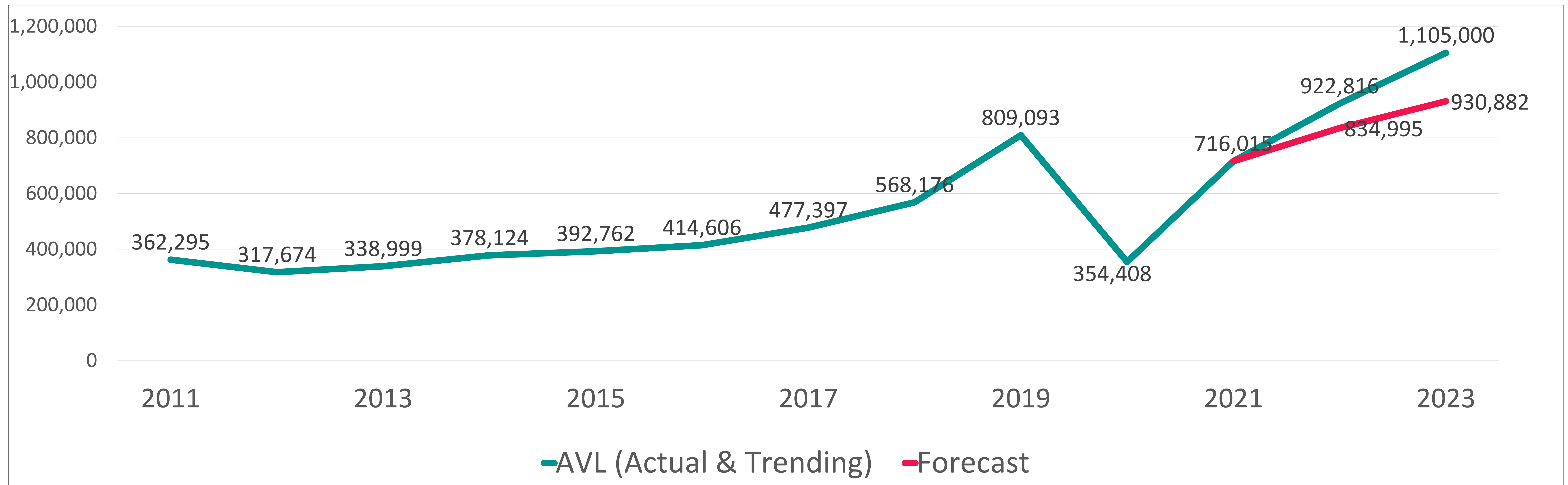
- Provides the Airport Authority with a planning tool to accelerate or defer recommended improvements based on potential triggers
- PALs vs. Year: Anticipated Year activity is projected:
 - Base Year (2021)
 - PAL 1 (2026)
 - PAL 2 (2031)
 - PAL 3 (2036)
 - PAL 4 (2041)
 - PAL 5 (2041 - Medium-High Growth)
 - PAL 6 (2041 - High Growth)





Enplanements (Forecast vs. Actual & Trending)

Passenger Activity							
Enplanements	Base (2021)	PAL 1 (2026)	PAL 2 (2031)	PAL 3 (2036)	PAL 4 (2041)	PAL 5 (2041+)	PAL 6 (2041+)
Annual	716,015	1,038,576	1,162,182	1,300,499	1,455,279	1,649,002	1,841,354
Peak Hour	616	910	1,019	1,140	1,276	1,446	1,614





Terminal Development Alternatives





Terminal Complex Development: Alternate 1

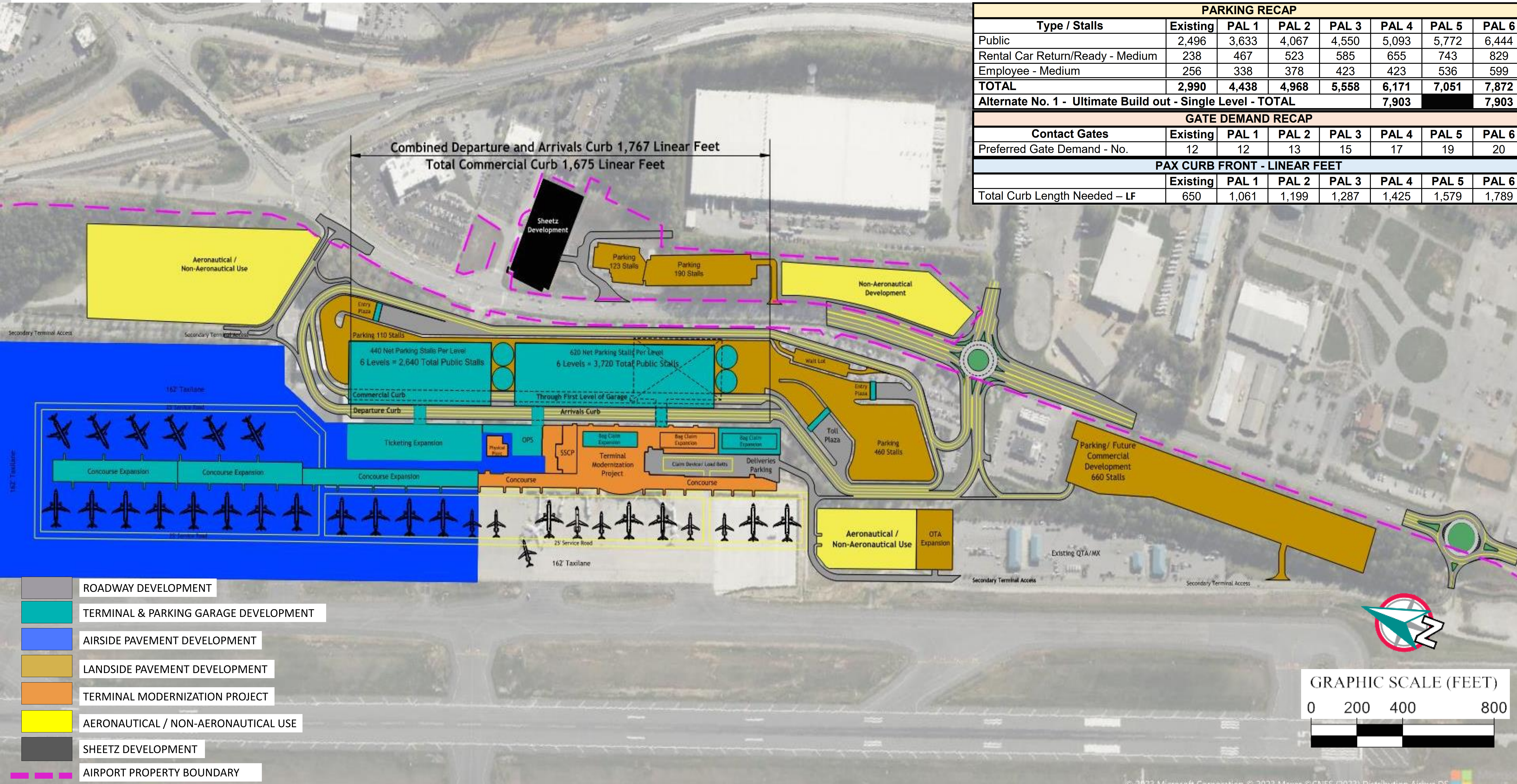
Ultimate Build-out

Single Level Concept - PAL 6 Plus

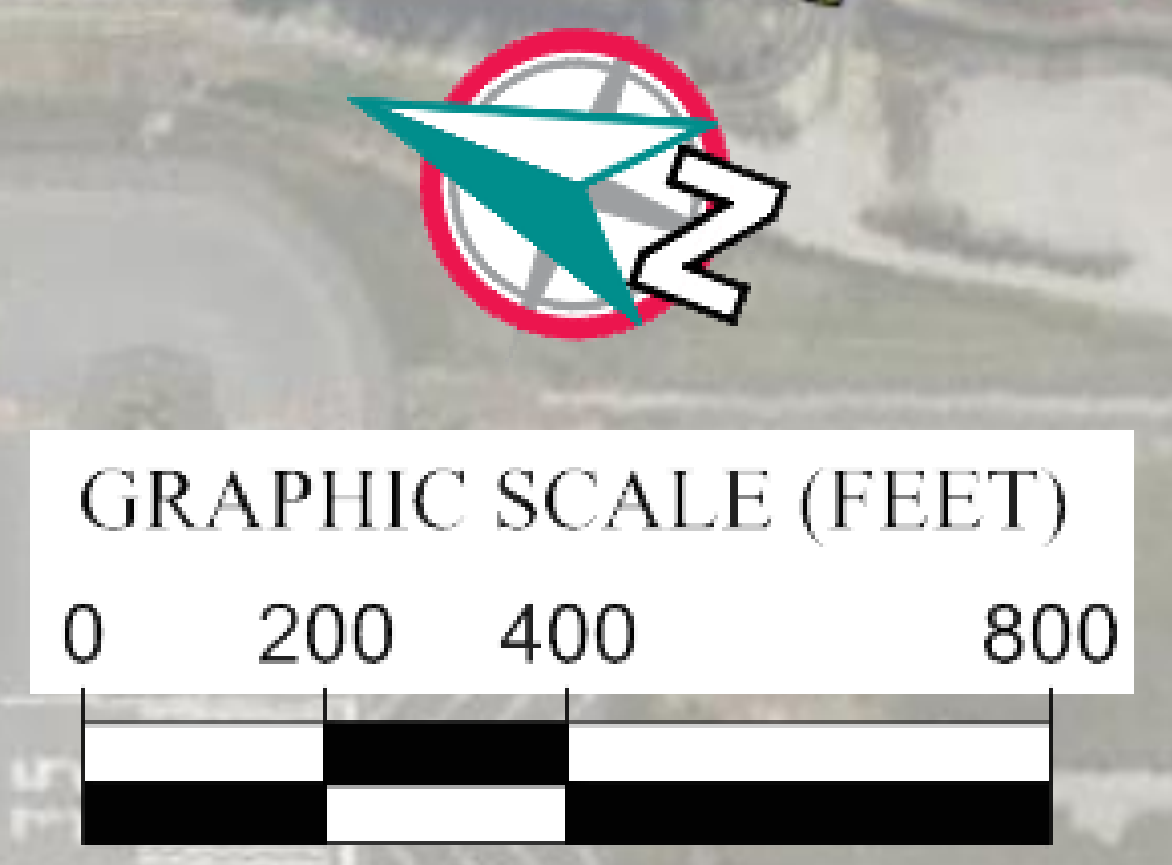
PARKING RECAP							
Type / Stalls	Existing	PAL 1	PAL 2	PAL 3	PAL 4	PAL 5	PAL 6
Public	2,496	3,633	4,067	4,550	5,093	5,772	6,444
Rental Car Return/Ready - Medium	238	467	523	585	655	743	829
Employee - Medium	256	338	378	423	423	536	599
TOTAL	2,990	4,438	4,968	5,558	6,171	7,051	7,872
Alternate No. 1 - Ultimate Build out - Single Level - TOTAL						7,903	7,903

GATE DEMAND RECAP							
Contact Gates	Existing	PAL 1	PAL 2	PAL 3	PAL 4	PAL 5	PAL 6
Preferred Gate Demand - No.	12	12	13	15	17	19	20

PAX CURB FRONT - LINEAR FEET							
	Existing	PAL 1	PAL 2	PAL 3	PAL 4	PAL 5	PAL 6
Total Curb Length Needed - LF	650	1,061	1,199	1,287	1,425	1,579	1,789



- ROADWAY DEVELOPMENT
- TERMINAL & PARKING GARAGE DEVELOPMENT
- AIRSIDE PAVEMENT DEVELOPMENT
- LANDSIDE PAVEMENT DEVELOPMENT
- TERMINAL MODERNIZATION PROJECT
- AERONAUTICAL / NON-AERONAUTICAL USE
- SHEETZ DEVELOPMENT
- AIRPORT PROPERTY BOUNDARY

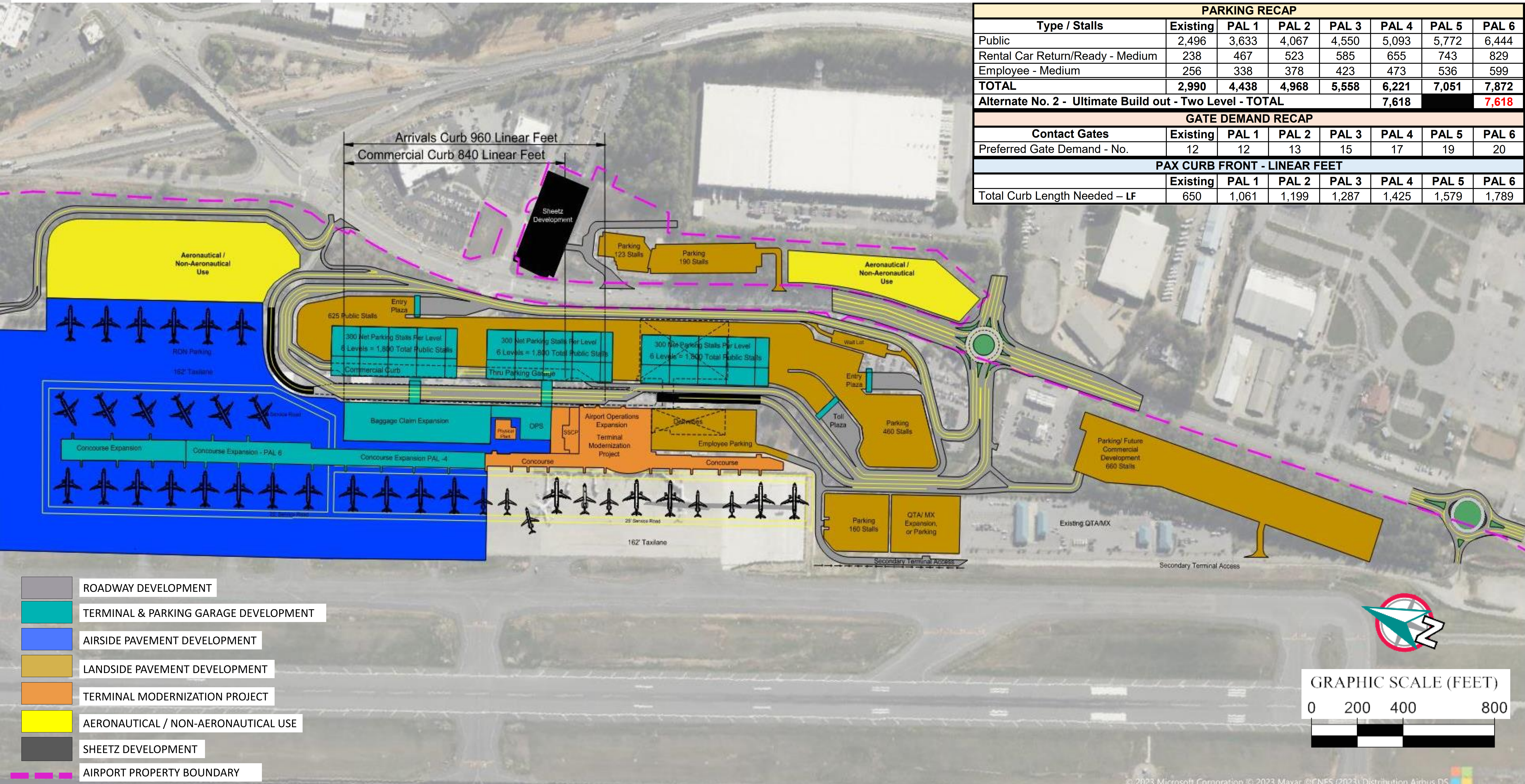




Terminal Complex Development: Alternate 2

Ultimate Build-out

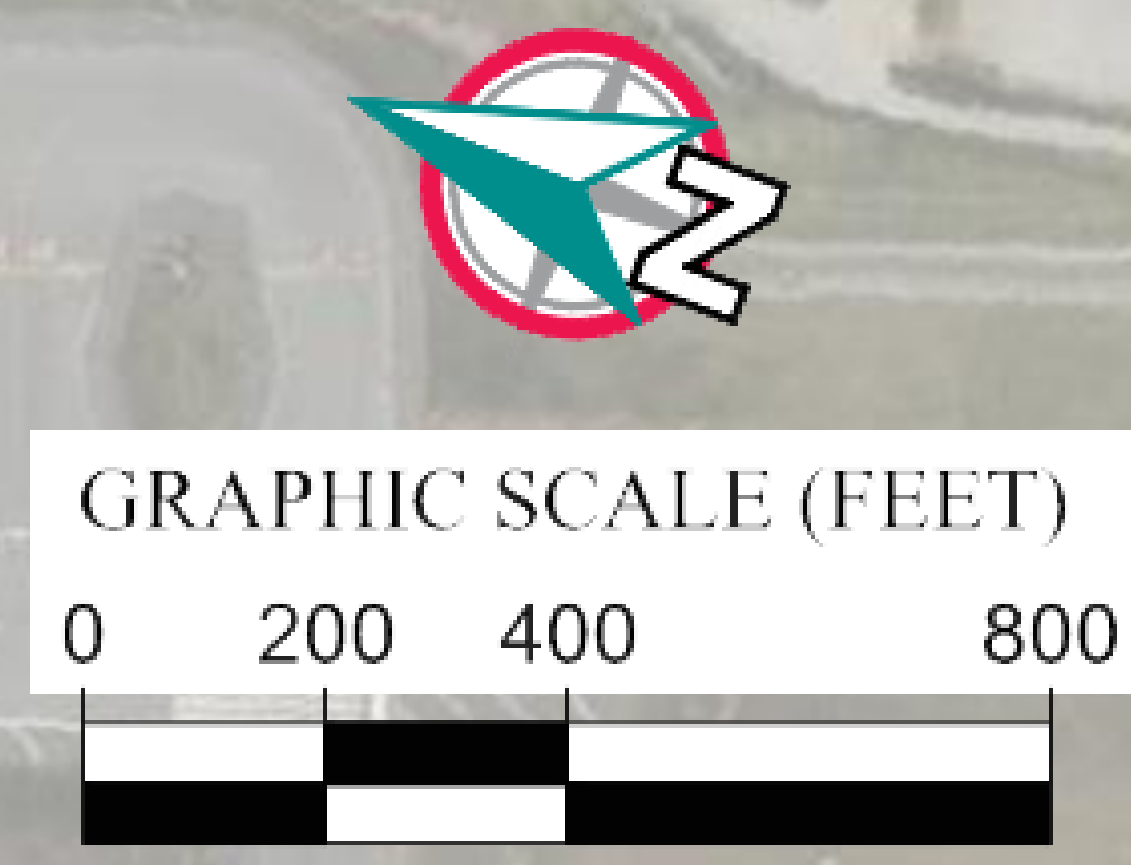
Two Level Concept – Arrival (Lower) - PAL 6 Plus



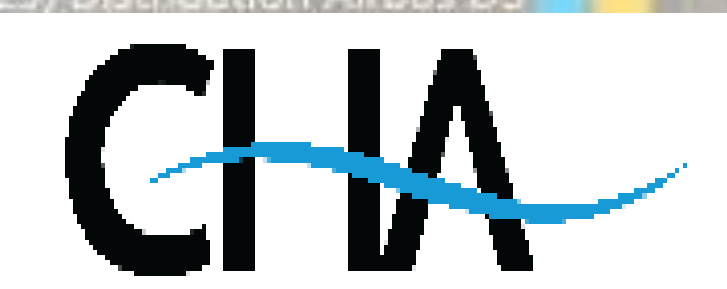
PARKING RECAP							
Type / Stalls	Existing	PAL 1	PAL 2	PAL 3	PAL 4	PAL 5	PAL 6
Public	2,496	3,633	4,067	4,550	5,093	5,772	6,444
Rental Car Return/Ready - Medium	238	467	523	585	655	743	829
Employee - Medium	256	338	378	423	473	536	599
TOTAL	2,990	4,438	4,968	5,558	6,221	7,051	7,872
Alternate No. 2 - Ultimate Build out - Two Level - TOTAL					7,618	7,618	7,618

GATE DEMAND RECAP							
Contact Gates	Existing	PAL 1	PAL 2	PAL 3	PAL 4	PAL 5	PAL 6
Preferred Gate Demand - No.	12	12	13	15	17	19	20

PAX CURB FRONT - LINEAR FEET							
	Existing	PAL 1	PAL 2	PAL 3	PAL 4	PAL 5	PAL 6
Total Curb Length Needed – LF	650	1,061	1,199	1,287	1,425	1,579	1,789



© 2023 Microsoft Corporation © 2023 Maxar ©CNES (2023) Distribution Airbus DS

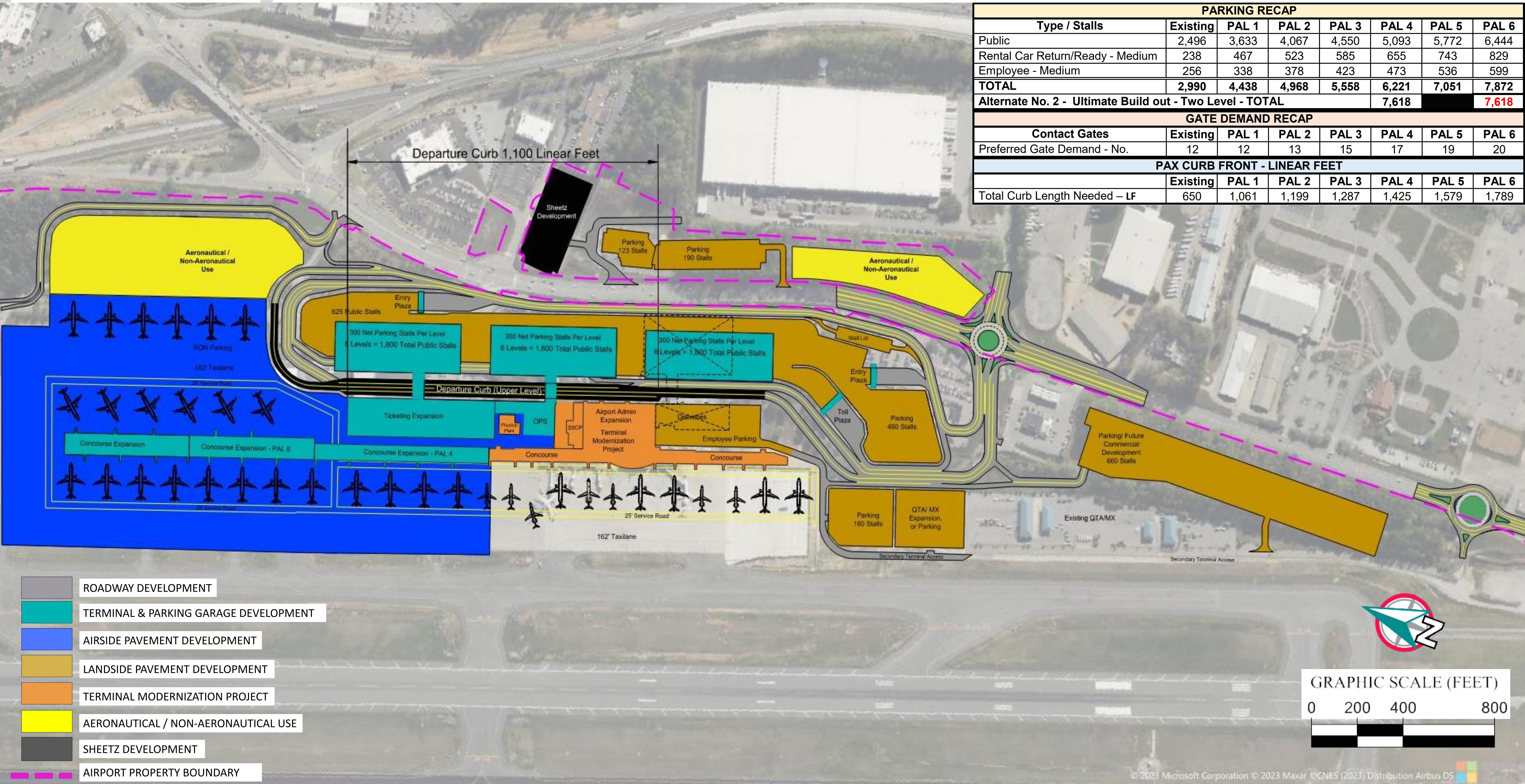




Terminal Complex Development: Alternate 2

Ultimate Build-out

Two Level Concept – Departure (Upper) - PAL 6 Plus



PARKING RECAP							
Type / Stalls	Existing	PAL 1	PAL 2	PAL 3	PAL 4	PAL 5	PAL 6
Public	2,496	3,633	4,067	4,550	5,093	5,772	6,444
Rental Car Return/Ready - Medium	238	467	523	585	655	743	829
Employee - Medium	256	338	378	423	473	536	599
TOTAL	2,990	4,438	4,968	5,558	6,221	7,051	7,872
Alternate No. 2 - Ultimate Build out - Two Level - TOTAL						7,618	7,618

GATE DEMAND RECAP							
Contact Gates	Existing	PAL 1	PAL 2	PAL 3	PAL 4	PAL 5	PAL 6
Preferred Gate Demand - No.	12	12	13	15	17	19	20

PAX CURB FRONT - LINEAR FEET							
	Existing	PAL 1	PAL 2	PAL 3	PAL 4	PAL 5	PAL 6
Total Curb Length Needed – LF	650	1,061	1,199	1,287	1,425	1,579	1,789

© 2023 Microsoft Corporation © 2023 Maxar © CNES (2023) Distribution Airbus DS

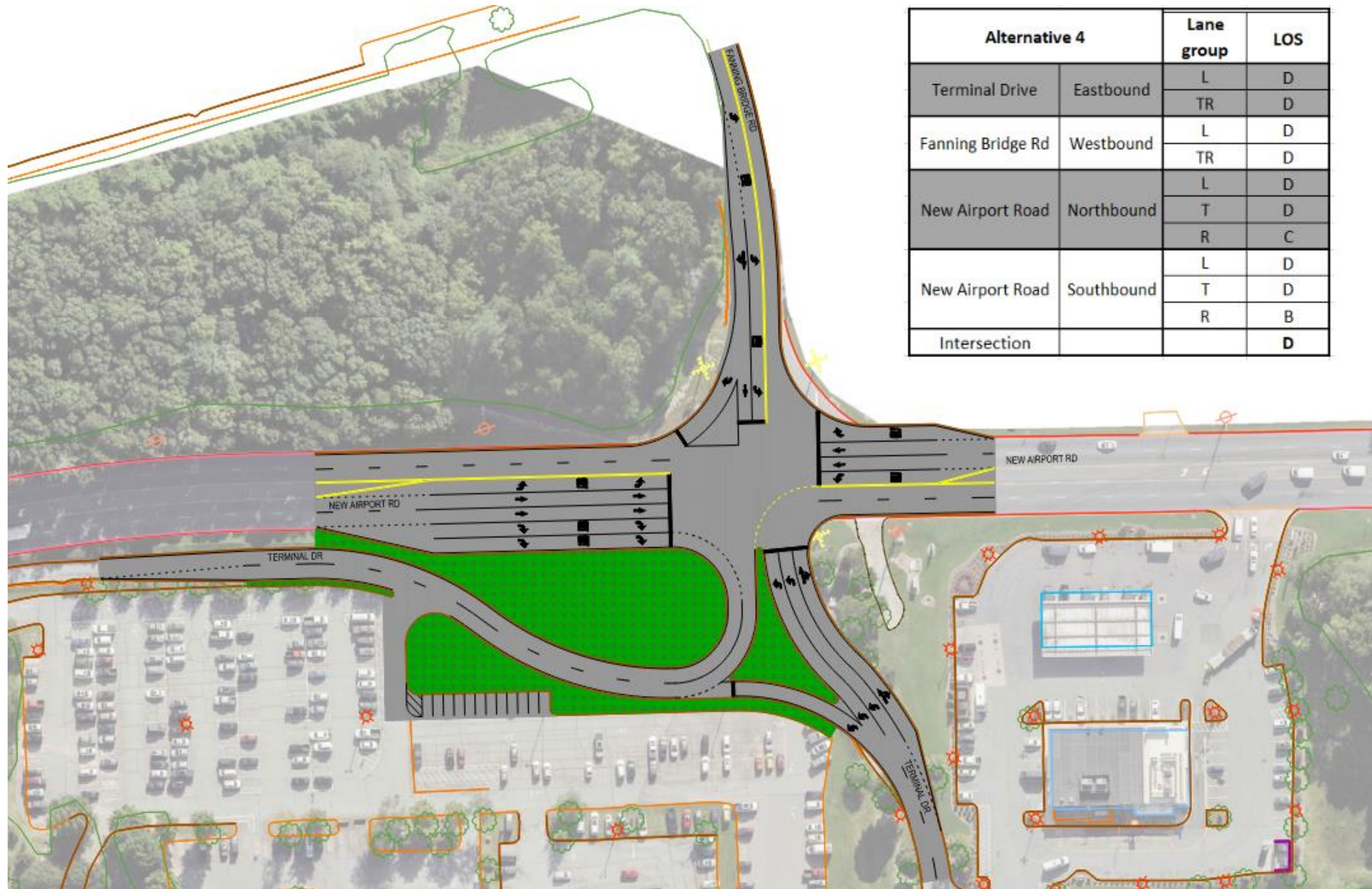




Off-Airport Landside Alternatives



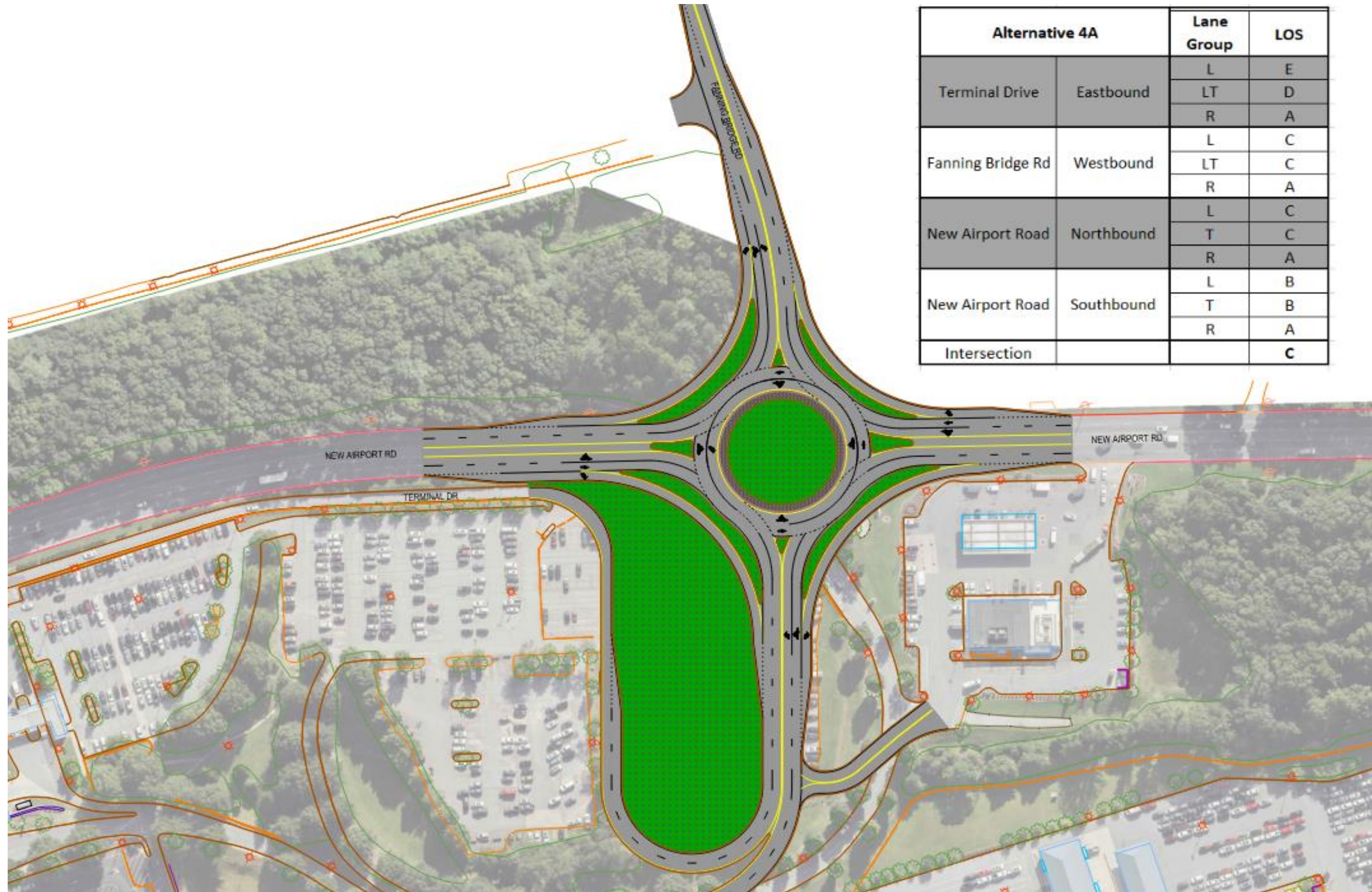
Exit Improvements: Signalized Intersection



Alternative 4		Lane group	LOS
Terminal Drive	Eastbound	L	D
		TR	D
Fanning Bridge Rd	Westbound	L	D
		TR	D
New Airport Road	Northbound	L	D
		T	D
		R	C
New Airport Road	Southbound	L	D
		T	D
		R	B
Intersection			D

- Relocate all passenger traffic (in & out) to this intersection
- **LOS is D** – 2041 projected
- Overall LOS is D

Exit Improvements: Roundabout



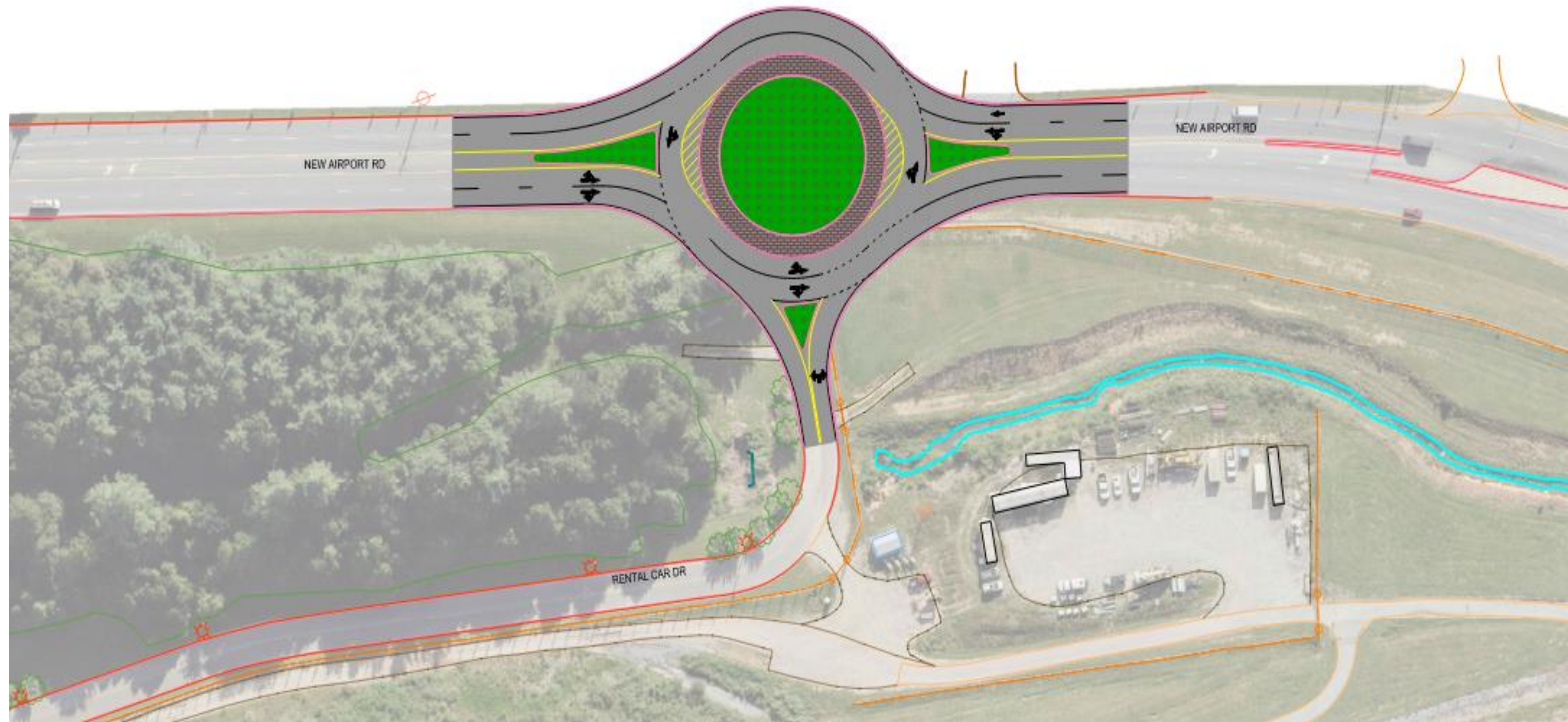
- Relocate all passenger traffic (in & out) to this intersection
- **LOS is E** – 2041 projected
- Overall LOS is C

Rental Car Drive Improvements: Roundabout



Alternative 1A		Lane group	LOS	
			AM	PM
Terminal Drive	Eastbound	LR	A	B
New Airport Drive	Northbound	T	A	A
	Southbound	T	A	A
Intersection			A	A

- Convert to Roundabout – inbound & outbound
- **LOS A/B**
- Overall LOS is A

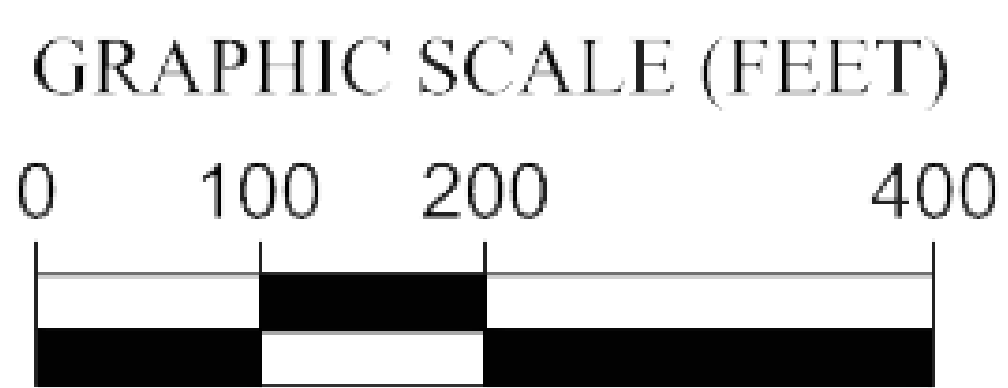








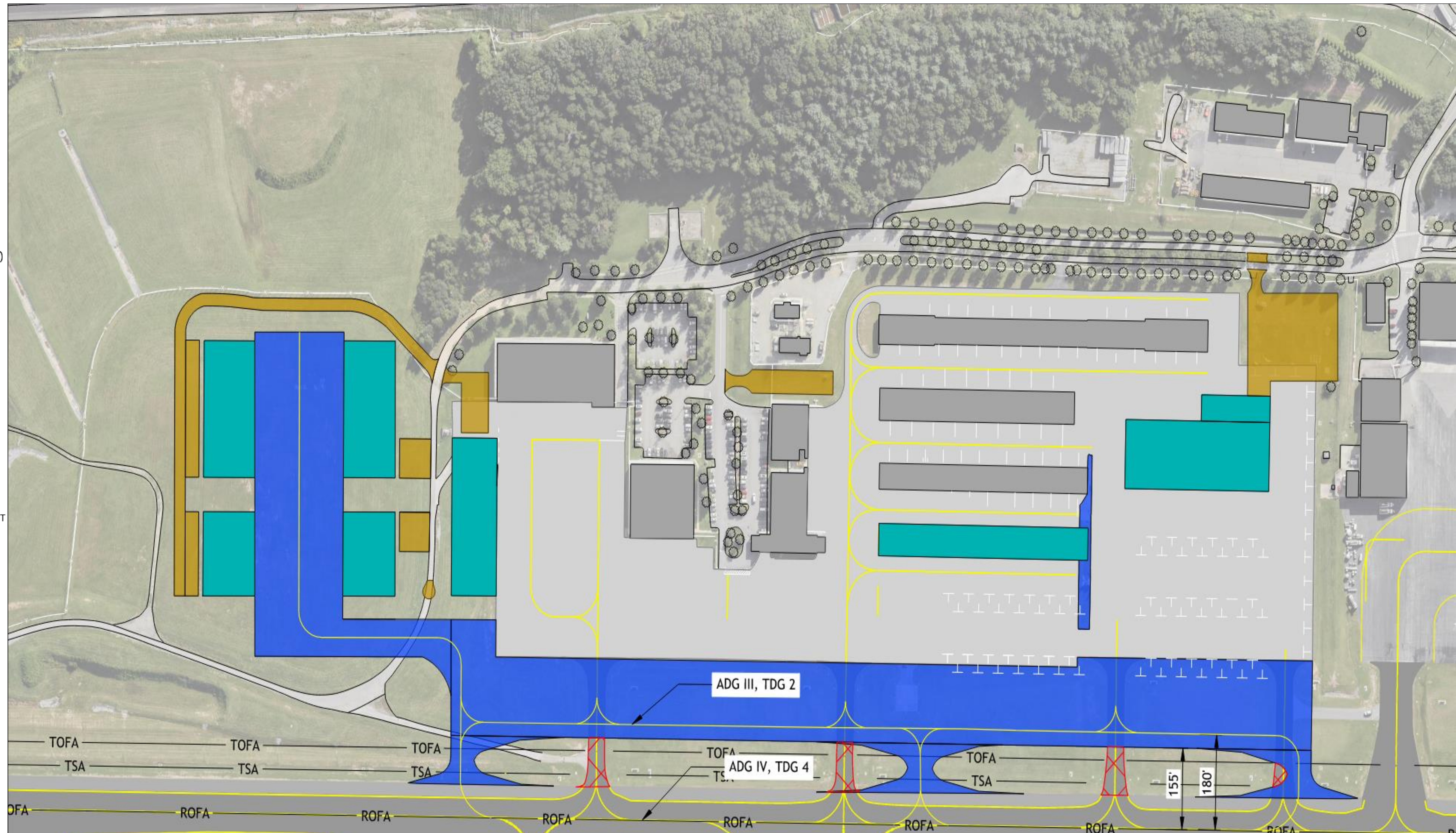
On-Airport Development Alternatives



General Aviation Development

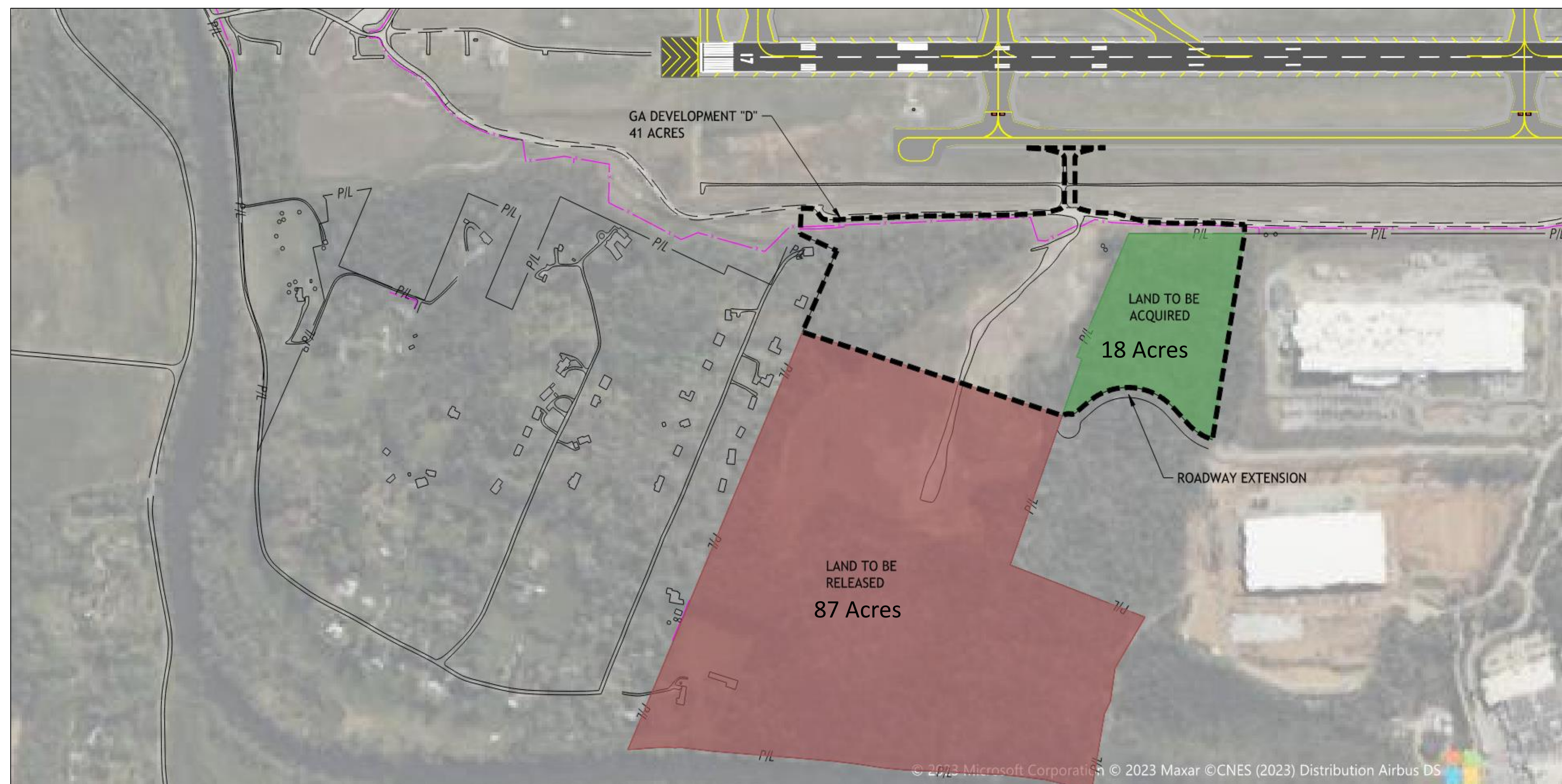


- LEGEND:**
-  PAVEMENT REMOVAL
 -  FUTURE HANGAR
 -  FUTURE AIRSIDE PAVEMENT
 -  FUTURE LANDSIDE PAVEMENT

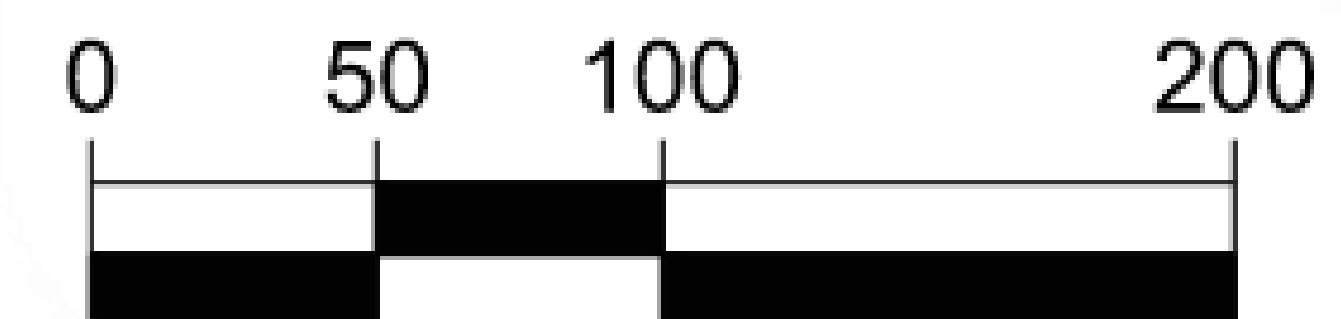


Aeronautical Land Development

Southwest Area



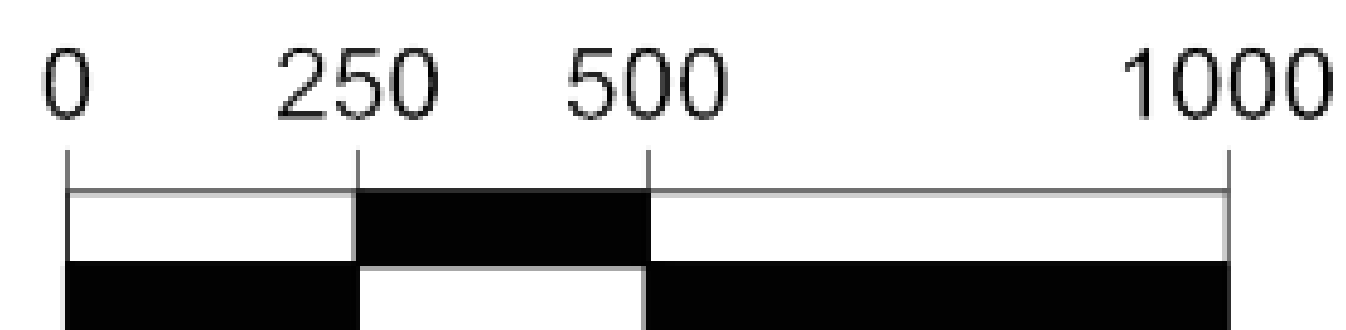
GRAPHIC SCALE (FEET)



Northwest Area

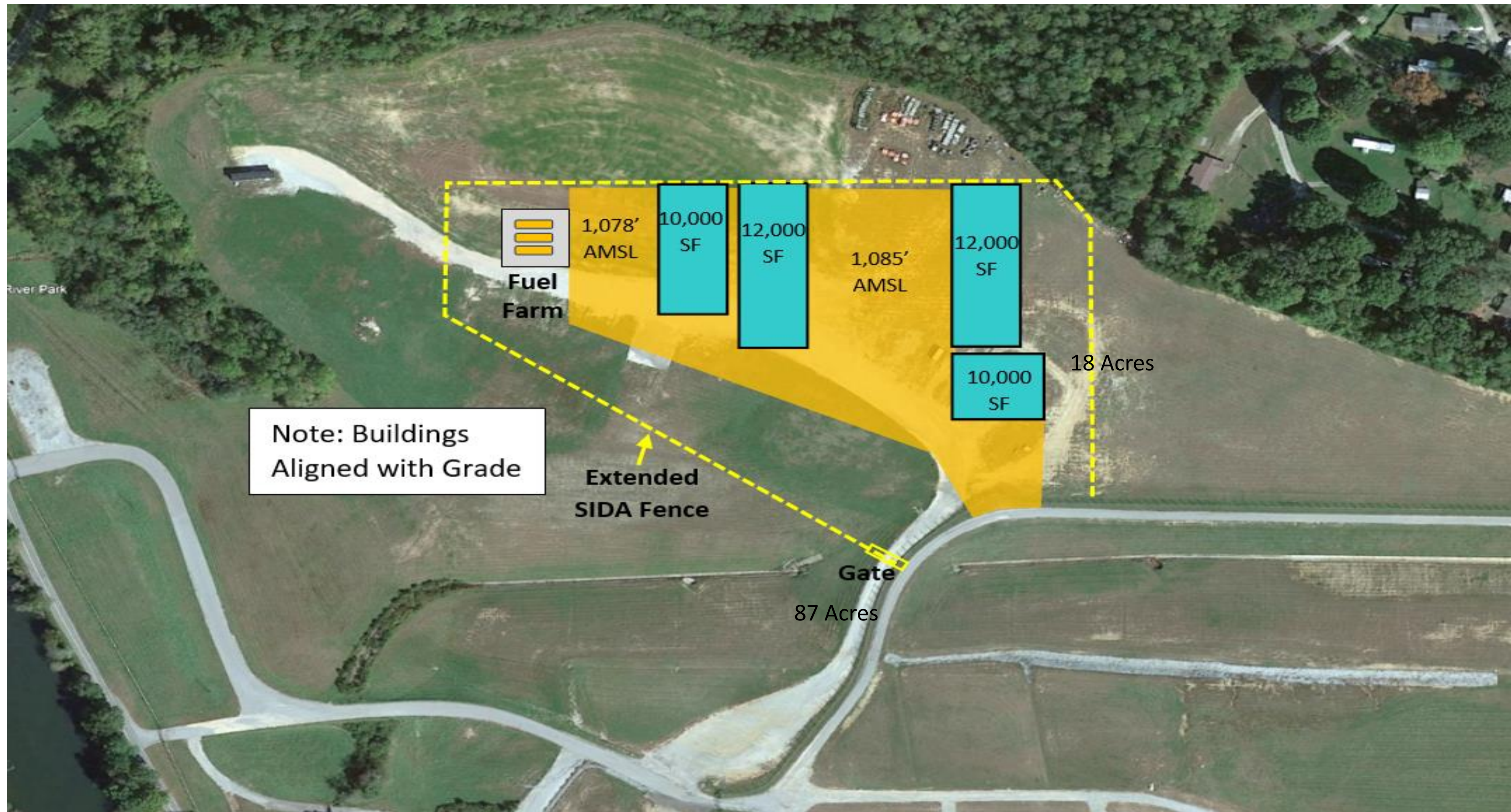


GRAPHIC SCALE (FEET)

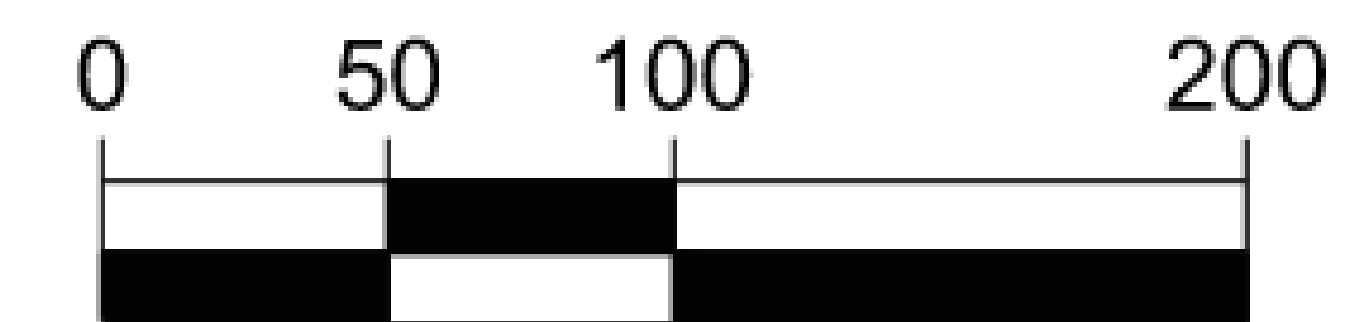


Aeronautical Land Development

SRE/Maintenance: Option 1



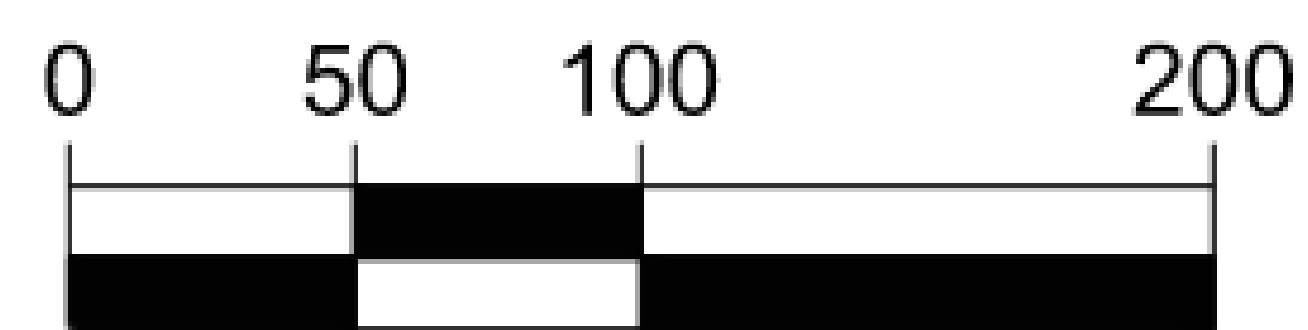
GRAPHIC SCALE (FEET)



SRE/Maintenance: Option 1



GRAPHIC SCALE (FEET)





Questions/Comments?

Feedback and Questions are Greatly Encouraged via....

- Comment Cards
- Email: Jared Merrill – jmerrill@flyavl.com
- Mail to: GARAA, 134 Wright Brother Way, Fletcher, NC 28732

Thank you!

