



SEPTEMBER 2014

BOARD INFORMATION PACKAGE



MEMORANDUM

TO: Members of the Airport Authority

FROM: Lew Bleiweis, Executive Director

DATE: September 19, 2014

Informational Reports:

- A. July, 2014 Traffic Report ([document](#))
- B. September, 2014 Development/Project Status Report ([document](#))



MEMORANDUM

TO: Members of the Airport Authority
FROM: Lew Bleiweis, A.A.E., Executive Director
DATE: September 19, 2014

ITEM DESCRIPTION – Information Section Item A

July, 2014 Traffic Report – Asheville Regional Airport

SUMMARY

July 2014 overall passenger traffic numbers were up 13.0% compared to the same period last year. Passenger traffic numbers reflect an 11.2% increase in passenger enplanements from July 2013.

AIRLINE PERFORMANCE

Allegiant Airlines: Year over Year passenger enplanements for Allegiant in July 2014 were up by 88.0%. There were no flight cancellations for the month.

Delta Airlines: Delta's July 2014 enplanements decreased by 10.3% compared to July 2013. There were two (2) flight cancellations for the month.

United Airlines: In July 2014, United Airlines saw an increase in enplanements by 29.9% over the same period last year. There were no flight cancellations for the month.

US Airways: US Airways' July 2014 passenger enplanements represent a 3.6% decrease over the same period last year. There were six (6) flight cancellations for the month.

Monthly Traffic Report

Asheville Regional Airport

July 2014



Category	Jul 2014	Jul 2013	Percentage Change	*CYTD-2014	*CYTD-2013	Percentage Change	*MOV12-2014	*MOV12-2013	Percentage Change
Passenger Traffic									
Enplaned	39,725	35,720	11.2%	206,348	183,627	12.4%	361,720	318,143	13.7%
Deplaned	<u>40,814</u>	<u>35,585</u>	14.7%	<u>206,947</u>	<u>183,476</u>	12.8%	<u>362,495</u>	<u>316,998</u>	14.4%
Total	80,539	71,305	13.0%	413,295	367,103	12.6%	724,215	635,141	14.0%
Aircraft Operations									
Airlines	567	444	27.7%	3,081	2,734	12.7%	5,478	4,397	24.6%
Commuter /Air Taxi	<u>1,199</u>	<u>1,342</u>	-10.7%	5,911	7,166	-17.5%	10,733	12,858	-16.5%
Subtotal	<u>1,766</u>	<u>1,786</u>	-1.1%	<u>8,992</u>	<u>9,900</u>	-9.2%	<u>16,211</u>	<u>17,255</u>	-6.1%
General Aviation	5,325	4,175	27.5%	27,105	21,382	26.8%	46,956	38,191	23.0%
Military	<u>556</u>	<u>410</u>	35.6%	<u>3,629</u>	<u>2,488</u>	45.9%	<u>5,740</u>	<u>4,541</u>	26.4%
Subtotal	<u>5,881</u>	<u>4,585</u>	28.3%	<u>30,734</u>	<u>23,870</u>	28.8%	<u>52,696</u>	<u>42,732</u>	23.3%
Total	7,647	6,371	20.0%	39,726	33,770	17.6%	68,907	59,987	14.9%
Fuel Gallons									
100LL	25,090	16,221	54.7%	92,813	81,348	14.1%	166,718	155,261	7.4%
Jet A (GA)	153,694	127,943	20.1%	704,913	624,545	12.9%	1,199,474	1,127,053	6.4%
Subtotal	<u>178,784</u>	<u>144,164</u>	24.0%	<u>797,726</u>	<u>705,893</u>	13.0%	<u>1,366,192</u>	<u>1,282,314</u>	6.5%
Jet A (A/L)	<u>301,477</u>	<u>296,586</u>	1.6%	<u>1,384,440</u>	<u>1,371,505</u>	0.9%	<u>2,436,170</u>	<u>2,236,226</u>	8.9%
Total	480,261	440,750	9.0%	2,182,166	2,077,398	5.0%	3,802,362	3,518,540	8.1%

*CYTD = Calendar Year to Date and *Mov12 = Moving Twelve Months.

Wednesday, August 20, 2014

Airline Enplanements, Seats, and Load Factors

Asheville Regional Airport

July 2014



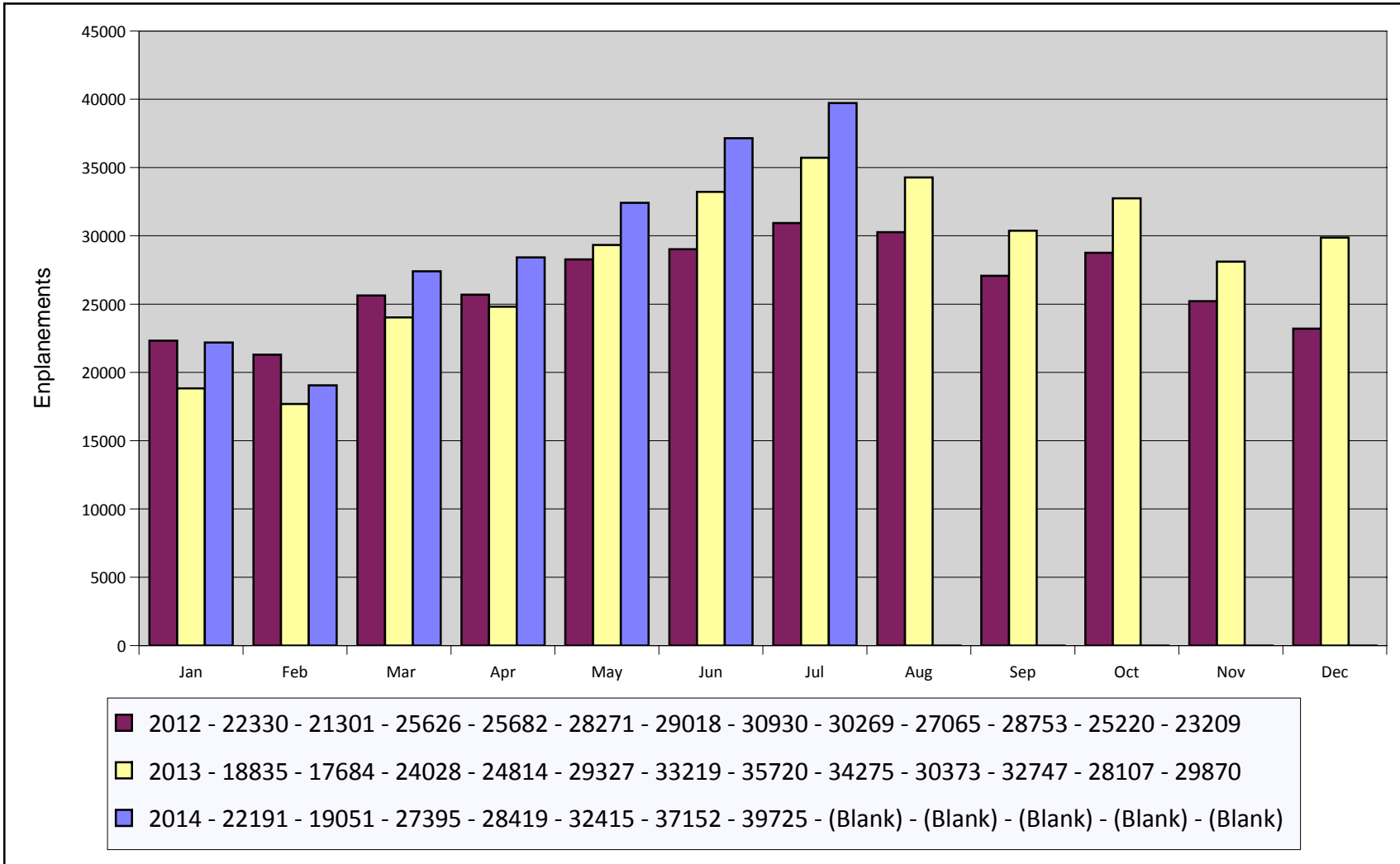
	Jul 2014	Jul 2013	Percentage Change	*CYTD-2014	*CYTD-2013	Percentage Change
Allegiant Air						
Enplanements	9,956	5,296	88.0%	47,229	22,677	108.3%
Seats	10,489	5,634	86.2%	53,191	25,086	112.0%
Load Factor	94.9%	94.0%	1.0%	88.8%	90.4%	-1.8%
Delta Air Lines						
Enplanements	13,803	15,390	-10.3%	78,756	78,431	0.4%
Seats	16,950	18,366	-7.7%	98,775	110,609	-10.7%
Load Factor	81.4%	83.8%	-2.8%	79.7%	70.9%	12.4%
United Airlines						
Enplanements	5,718	4,401	29.9%	20,218	20,278	-0.3%
Seats	6,382	5,400	18.2%	23,314	26,350	-11.5%
Load Factor	89.6%	81.5%	9.9%	86.7%	77.0%	12.7%
US Airways						
Enplanements	10,248	10,633	-3.6%	60,145	62,241	-3.4%
Seats	12,389	14,550	-14.9%	80,015	95,767	-16.4%
Load Factor	82.7%	73.1%	13.2%	75.2%	65.0%	15.7%
Totals						
Enplanements	39,725	35,720	11.2%	206,348	183,627	12.4%
Seats	46,210	43,950	5.1%	255,295	257,812	-1.0%
Load Factor	86.0%	81.3%	5.8%	80.8%	71.2%	13.5%

Airline Flight Completions Asheville Regional Airport July 2014

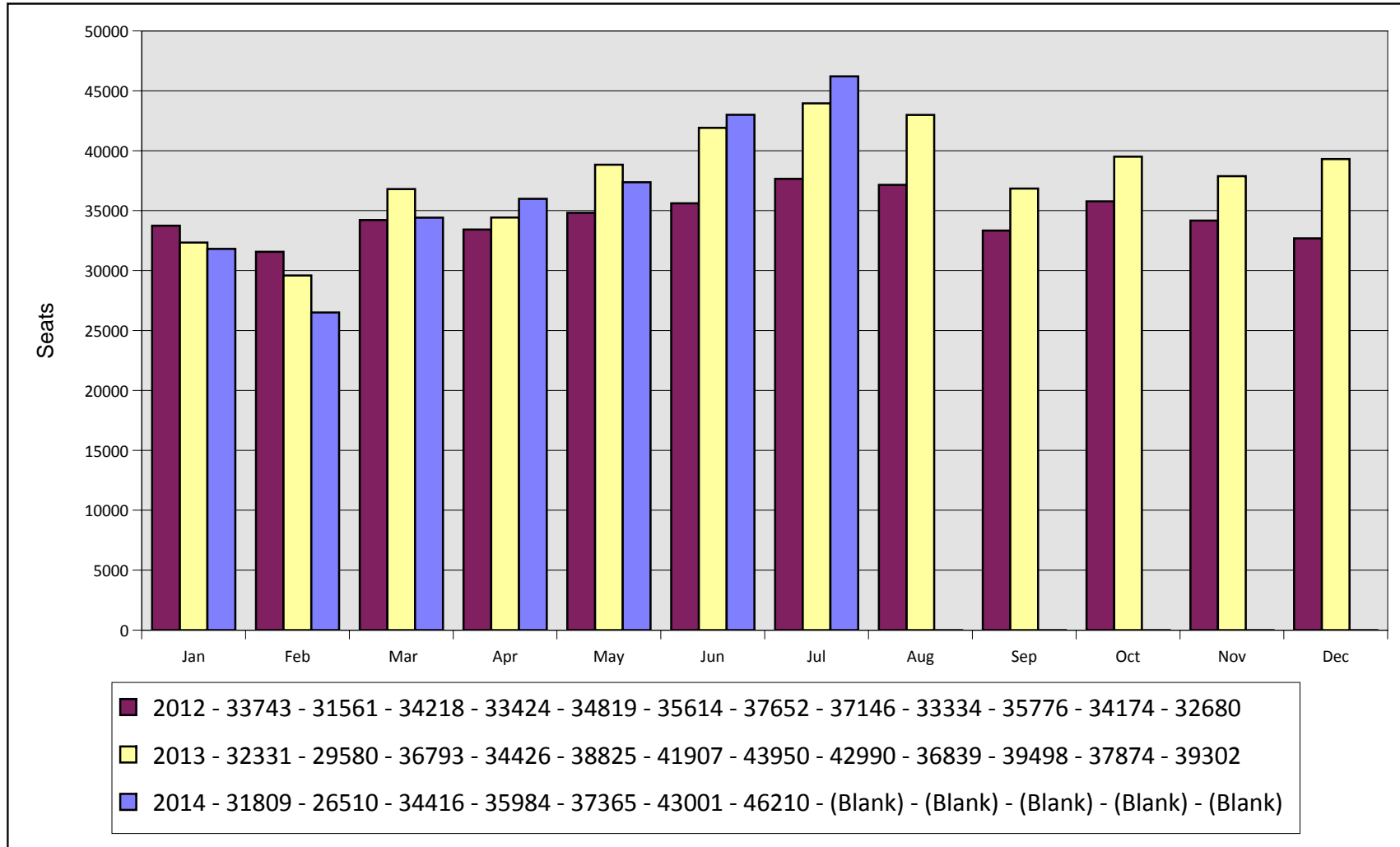


Airline	Scheduled Flights	Field	Cancellations Due To			Total Cancellations	Percentage of Completed
			Mechanical	Weather	Other		
Allegiant Air	61	0	0	0	0	0	100.0%
Delta Air Lines	269	0	0	2	0	2	99.3%
United Airlines	127	0	0	0	0	0	100.0%
US Airways	216	0	2	3	1	6	98.1%
Total	673	0	2	5	1	8	98.8%

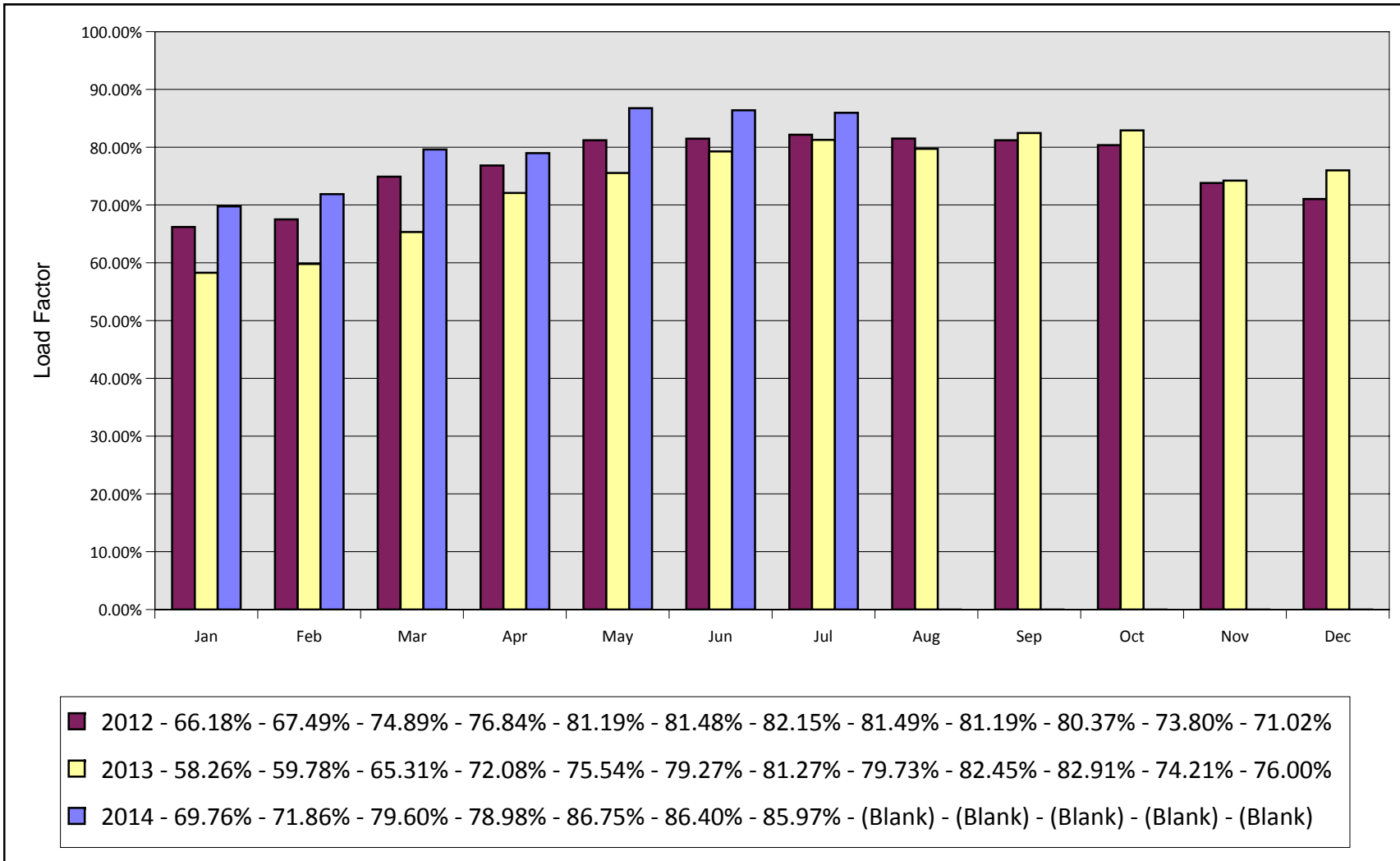
Monthly Enplanements By Year Asheville Regional Airport



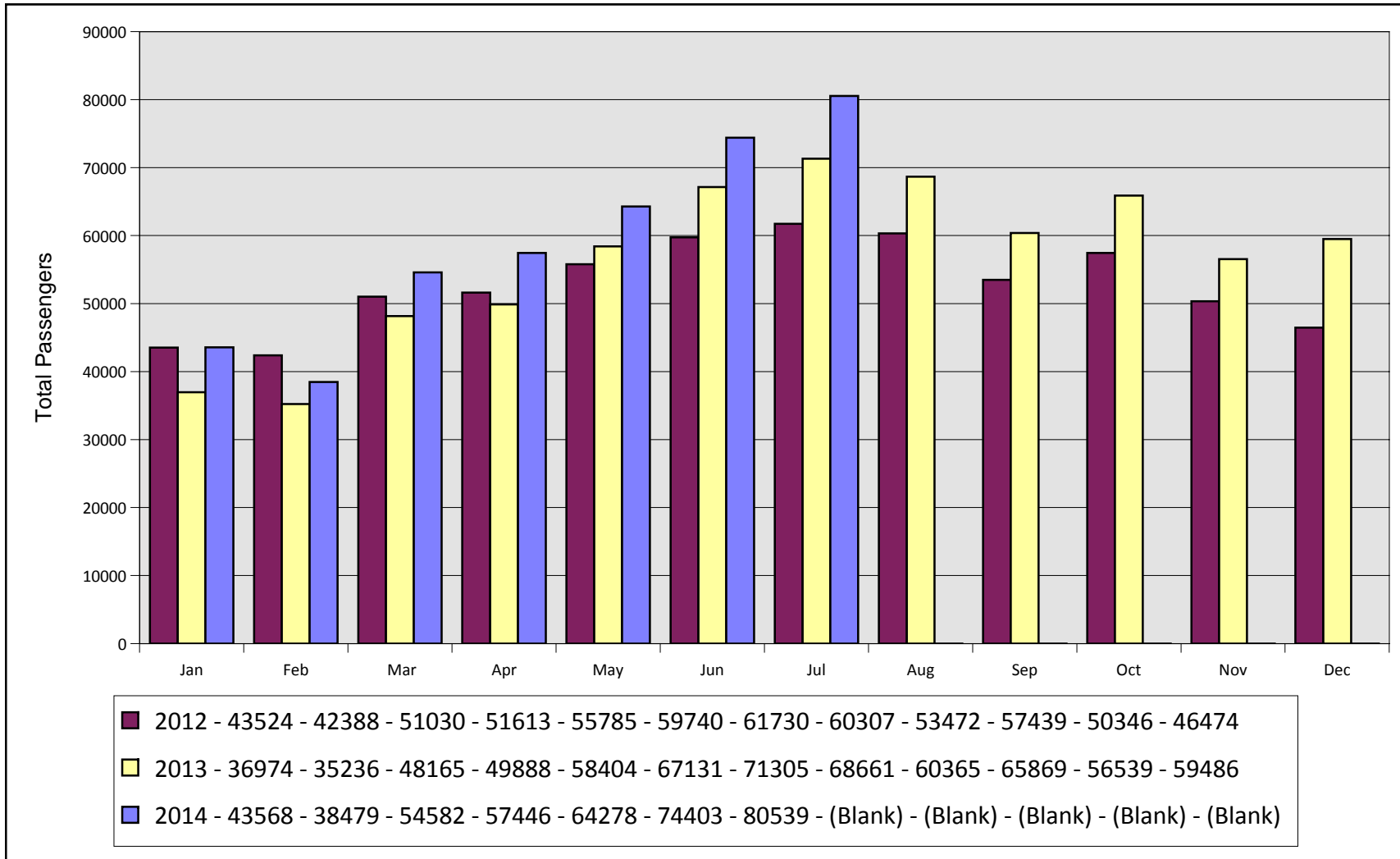
Monthly Seats By Year Asheville Regional Airport



Monthly Load Factors By Year Asheville Regional Airport

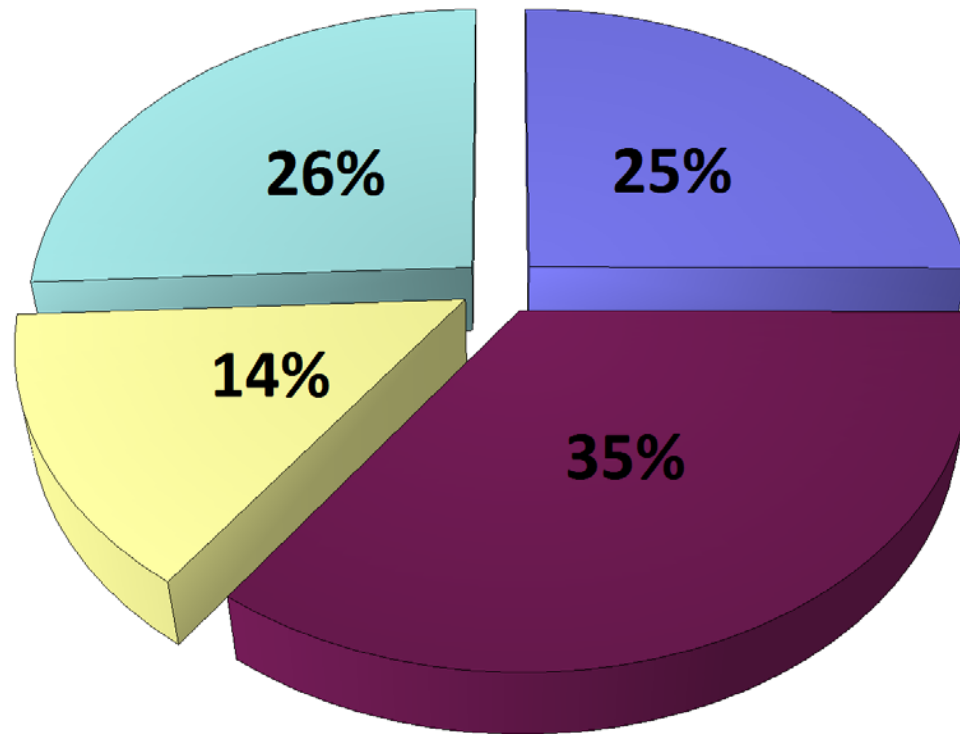


Total Monthly Passengers By Year Asheville Regional Airport

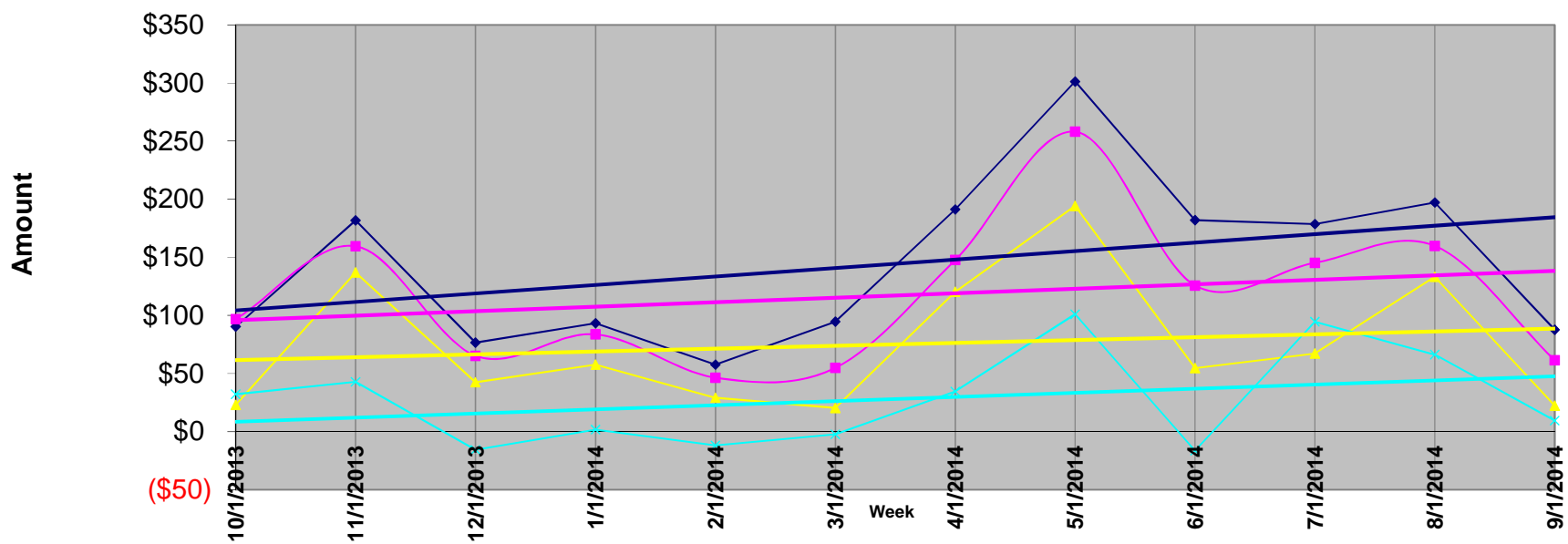


Airline Market Share Analysis (Enplanements) Asheville Regional Airport

Report Period From July 2014 Through July 2014



AVL Average Airfare Differences 21 Day Advance Purchase, 3 Day Stay



◆ ATL
 ◆ CLT
 ◆ GSP
 ◆ TRI
 — Linear (ATL)
 — Linear (CLT)
 — Linear (GSP)
 — Linear (TRI)

Asheville Regional Airport
Sample airfares as of 9/1/14
21 Day Advance Purchase, 3 day Stay

							<u>Difference in Fares</u>				
		<u>ASHEVILLE</u>	<u>ATLANTA</u>	<u>CHARLOTTE</u>	<u>GREENVILLE</u>	<u>TRI-CITIES</u>	<u>ATLANTA</u>	<u>CHARLOTTE</u>	<u>GREENVILLE</u>	<u>TRI-CITIES</u>	
ABQ	Albuquerque	\$531	\$421	\$457	\$514	\$585	\$110	\$74	\$17	(\$54)	
ATL	Atlanta	\$336		\$348	\$306	\$376	\$336	(\$12)	\$30	(\$40)	
AUS	Austin	\$416	\$288	\$333	\$398	\$410	\$128	\$83	\$18	\$6	
BWI	Baltimore	\$338	\$270	\$213	\$267	\$274	\$68	\$125	\$71	\$64	
BOS	Boston	\$388	\$328	\$190	\$300	\$388	\$60	\$198	\$88	\$0	
ORD	Chicago	\$266	\$280	\$278	\$231	\$301	(\$14)	(\$12)	\$35	(\$35)	
CVG	Cincinnati	\$318	\$312	\$324	\$413	\$331	\$6	(\$6)	(\$95)	(\$13)	
CLE	Cleveland	\$293	\$311	\$314	\$340	\$274	(\$18)	(\$21)	(\$47)	\$19	
DFW	Dallas	\$333	\$245	\$368	\$327	\$316	\$88	(\$35)	\$6	\$17	
DEN	Denver	\$515	\$220	\$480	\$506	\$619	\$295	\$35	\$9	(\$104)	
DTW	Detroit	\$402	\$320	\$380	\$321	\$361	\$82	\$22	\$81	\$41	
FLL	Fort Lauderdale	\$381	\$246	\$327	\$331	\$316	\$135	\$54	\$50	\$65	
RSW	Ft. Myers	\$381	\$246	\$341	\$338	\$279	\$135	\$40	\$43	\$102	
BDL	Hartford	\$414	\$321	\$280	\$353	\$363	\$93	\$134	\$61	\$51	
IAH	Houston	\$456	\$260	\$360	\$319	\$314	\$196	\$96	\$137	\$142	
IND	Indianapolis	\$436	\$234	\$305	\$337	\$274	\$202	\$131	\$99	\$162	
JAX	Jacksonville	\$431	\$214	\$280	\$340	\$274	\$217	\$151	\$91	\$157	
MCI	Kansas City	\$353	\$345	\$269	\$318	\$316	\$8	\$84	\$35	\$37	
LAS	Las Vegas	\$557	\$498	\$633	\$663	\$802	\$59	(\$76)	(\$106)	(\$245)	
LAX	Los Angeles	\$508	\$333	\$496	\$462	\$499	\$175	\$12	\$46	\$9	
MHT	Manchester	\$365	\$358	\$239	\$428	\$371	\$7	\$126	(\$63)	(\$6)	
MEM	Memphis	\$353	\$329	\$313	\$340	\$341	\$24	\$40	\$13	\$12	
MIA	Miami	\$342	\$276	\$327	\$421	\$373	\$66	\$15	(\$79)	(\$31)	
MKE	Milwaukee	\$388	\$291	\$299	\$294	\$316	\$97	\$89	\$94	\$72	
MSP	Minneapolis/Saint Pau	\$436	\$347	\$406	\$397	\$426	\$89	\$30	\$39	\$10	
BNA	Nashville	\$352	\$324	\$306	\$427	\$372	\$28	\$46	(\$75)	(\$20)	
MSY	New Orleans	\$372	\$292	\$280	\$315	\$486	\$80	\$92	\$57	(\$114)	

LGA	New York	\$387	\$291	\$218	\$334	\$325	\$96	\$169	\$53	\$62
EWR	Newark	\$328	\$332	\$307	\$353	\$351	(\$4)	\$21	(\$25)	(\$23)
MCO	Orlando	\$366	\$248	\$282	\$377	\$332	\$118	\$84	(\$11)	\$34
PHL	Philadelphia	\$324	\$306	\$318	\$344	\$274	\$18	\$6	(\$20)	\$50
PHX	Phoenix	\$442	\$363	\$484	\$447	\$422	\$79	(\$42)	(\$5)	\$20
PIT	Pittsburgh	\$332	\$242	\$317	\$272	\$274	\$90	\$15	\$60	\$58
PDX	Portland	\$464	\$377	\$426	\$409	\$485	\$87	\$38	\$55	(\$21)
PVD	Providence	\$388	\$358	\$230	\$302	\$316	\$30	\$158	\$86	\$72
RDU	Raleigh/Durham	\$408	\$224	\$274	\$341	\$316	\$184	\$134	\$67	\$92
RIC	Richmond	\$366	\$244	\$280	\$341	\$274	\$122	\$86	\$25	\$92
STL	Saint Louis	\$358	\$311	\$312	\$363	\$374	\$47	\$46	(\$5)	(\$16)
SLC	Salt Lake City	\$428	\$399	\$415	\$471	\$501	\$29	\$13	(\$43)	(\$73)
SAT	San Antonio	\$346	\$305	\$289	\$297	\$401	\$41	\$57	\$49	(\$55)
SAN	San Diego	\$422	\$416	\$349	\$482	\$575	\$6	\$73	(\$60)	(\$153)
SFO	San Francisco	\$569	\$333	\$381	\$474	\$660	\$236	\$188	\$95	(\$91)
SRQ	Sarasota/Bradenton	\$351	\$264	\$280	\$345	\$356	\$87	\$71	\$6	(\$5)
SEA	Seattle	\$456	\$410	\$437	\$449	\$547	\$46	\$19	\$7	(\$91)
SYR	Syracuse	\$381	\$362	\$286	\$427	\$316	\$19	\$95	(\$46)	\$65
TPA	Tampa	\$331	\$244	\$341	\$375	\$316	\$87	(\$10)	(\$44)	\$15
YYZ	Toronto	\$413	\$571	\$508	\$455	\$499	(\$158)	(\$95)	(\$42)	(\$86)
DCA	Washington DC	\$369	\$237	\$218	\$329	\$274	\$132	\$151	\$40	\$95
IAD	Washington DC	\$366	\$286	\$198	\$217	\$274	\$80	\$168	\$149	\$92
PBI	West Palm Beach	\$396	\$236	\$287	\$333	\$356	\$160	\$109	\$63	\$40

*These sample airfares were available 9/1/14, based on a 21 day advance purchase and a 3 day stay. Other restrictions may apply. To obtain the most up-to-date pricing information for your travel needs, please contact your travel agent or visit specific airline or airline booking websites. Airfares are subject to change without notice - and lower airfares are often not available on all dates. Please see our "Low Fares" section on our web site for any last minute airfare specials.

\$88 \$61 \$22 \$10

Average Fare difference

Blue highlighted numbers represent fare differentials in excess of \$35 for GSP, \$70 for CLT, \$100 for ATL, and \$35 for TRI.

Asheville Regional Airport
Sample airfares as of 9/1/14
0 Day Advance Purchase, 3 day Stay

							<u>Difference in Fares</u>				
		<u>ASHEVILLE</u>	<u>ATLANTA</u>	<u>CHARLOTTE</u>	<u>GREENVILLE</u>	<u>TRI-CITIES</u>	<u>ATLANTA</u>	<u>CHARLOTTE</u>	<u>GREENVILLE</u>	<u>TRI-CITIES</u>	
ABQ	Albuquerque	\$841	\$715	\$987	\$911	\$545	\$126	(\$146)	(\$70)	\$296	
ATL	Atlanta	\$348		\$452	\$343	\$384	\$348	(\$104)	\$5	(\$36)	
AUS	Austin	\$648	\$484	\$617	\$845	\$573	\$164	\$31	(\$197)	\$75	
BWI	Baltimore	\$556	\$442	\$309	\$298	\$386	\$114	\$247	\$258	\$170	
BOS	Boston	\$648	\$331	\$297	\$655	\$473	\$317	\$351	(\$7)	\$175	
ORD	Chicago	\$395	\$644	\$479	\$401	\$386	(\$249)	(\$84)	(\$6)	\$9	
CVG	Cincinnati	\$451	\$489	\$498	\$730	\$480	(\$38)	(\$47)	(\$279)	(\$29)	
CLE	Cleveland	\$375	\$535	\$435	\$416	\$386	(\$160)	(\$60)	(\$41)	(\$11)	
DFW	Dallas	\$477	\$876	\$791	\$422	\$473	(\$399)	(\$314)	\$55	\$4	
DEN	Denver	\$1,012	\$450	\$916	\$819	\$632	\$562	\$96	\$193	\$380	
DTW	Detroit	\$492	\$523	\$505	\$505	\$386	(\$31)	(\$13)	(\$13)	\$106	
FLL	Fort Lauderdale	\$614	\$433	\$447	\$669	\$516	\$181	\$167	(\$55)	\$98	
RSW	Ft. Myers	\$618	\$430	\$523	\$627	\$556	\$188	\$95	(\$9)	\$62	
BDL	Hartford	\$614	\$486	\$445	\$593	\$473	\$128	\$169	\$21	\$141	
IAH	Houston	\$640	\$476	\$544	\$437	\$514	\$164	\$96	\$203	\$126	
IND	Indianapolis	\$848	\$279	\$431	\$519	\$386	\$569	\$417	\$329	\$462	
JAX	Jacksonville	\$838	\$309	\$497	\$575	\$424	\$529	\$341	\$263	\$414	
MCI	Kansas City	\$902	\$434	\$457	\$753	\$516	\$468	\$445	\$149	\$386	
LAS	Las Vegas	\$794	\$649	\$807	\$867	\$685	\$145	(\$13)	(\$73)	\$109	
LAX	Los Angeles	\$908	\$570	\$928	\$969	\$622	\$338	(\$20)	(\$61)	\$286	
MHT	Manchester	\$648	\$630	\$337	\$658	\$546	\$18	\$311	(\$10)	\$102	
MEM	Memphis	\$553	\$487	\$529	\$552	\$381	\$66	\$24	\$1	\$172	
MIA	Miami	\$447	\$626	\$690	\$498	\$473	(\$179)	(\$243)	(\$51)	(\$26)	
MKE	Milwaukee	\$864	\$444	\$457	\$615	\$516	\$420	\$407	\$249	\$348	
MSP	Minneapolis/Saint Paul	\$954	\$491	\$636	\$821	\$573	\$463	\$318	\$133	\$381	
BNA	Nashville	\$454	\$420	\$532	\$594	\$384	\$34	(\$78)	(\$140)	\$70	
MSY	New Orleans	\$618	\$503	\$454	\$673	\$586	\$115	\$164	(\$55)	\$32	

LGA	New York	\$620	\$501	\$423	\$473	\$641	\$119	\$197	\$147	(\$21)
EWR	Newark	\$536	\$560	\$659	\$451	\$588	(\$24)	(\$123)	\$85	(\$52)
MCO	Orlando	\$556	\$462	\$392	\$900	\$473	\$94	\$164	(\$344)	\$83
PHL	Philadelphia	\$412	\$555	\$447	\$546	\$386	(\$143)	(\$35)	(\$134)	\$26
PHX	Phoenix	\$781	\$717	\$1,071	\$875	\$572	\$64	(\$290)	(\$94)	\$209
PIT	Pittsburgh	\$552	\$508	\$439	\$527	\$386	\$44	\$113	\$25	\$166
PDX	Portland	\$1,159	\$905	\$837	\$1,063	\$852	\$254	\$322	\$96	\$307
PVD	Providence	\$648	\$632	\$337	\$655	\$473	\$16	\$311	(\$7)	\$175
RDU	Raleigh/Durham	\$668	\$422	\$345	\$589	\$386	\$246	\$323	\$79	\$282
RIC	Richmond	\$556	\$443	\$435	\$669	\$424	\$113	\$121	(\$113)	\$132
STL	Saint Louis	\$556	\$512	\$457	\$613	\$386	\$44	\$99	(\$57)	\$170
SLC	Salt Lake City	\$708	\$573	\$572	\$934	\$641	\$135	\$136	(\$226)	\$67
SAT	San Antonio	\$649	\$536	\$484	\$859	\$537	\$113	\$165	(\$210)	\$112
SAN	San Diego	\$812	\$549	\$733	\$965	\$650	\$263	\$79	(\$153)	\$162
SFO	San Francisco	\$1,232	\$629	\$768	\$983	\$680	\$603	\$464	\$249	\$552
SRQ	Sarasota/Bradenton	\$678	\$614	\$523	\$647	\$541	\$64	\$155	\$31	\$137
SEA	Seattle	\$1,139	\$780	\$1,059	\$983	\$680	\$359	\$80	\$156	\$459
SYR	Syracuse	\$618	\$598	\$479	\$821	\$516	\$20	\$139	(\$203)	\$102
TPA	Tampa	\$618	\$394	\$523	\$687	\$473	\$224	\$95	(\$69)	\$145
YYZ	Toronto	\$748	\$1,001	\$738	\$641	\$708	(\$253)	\$10	\$107	\$40
DCA	Washington DC	\$856	\$356	\$317	\$368	\$424	\$500	\$539	\$488	\$432
IAD	Washington DC	\$856	\$356	\$308	\$368	\$386	\$500	\$548	\$488	\$470
PBI	West Palm Beach	\$618	\$433	\$447	\$627	\$547	\$185	\$171	(\$9)	\$71

*These sample airfares were available 9/1/14, based on a 0 day advance purchase and a 3 day stay. Other restrictions may apply. To obtain the most up-to-date pricing information for your travel needs, please contact your travel agent or visit specific airline or airline booking websites. Airfares are subject to change without notice - and lower airfares are often not available on all dates. Please see our "Low Fares" section on our web site for any last minute airfare specials.

\$159 \$127 \$22 \$171

Average Fare difference

Blue highlighted numbers represent fare differentials in excess of \$35 for GSP, \$70 for CLT, \$100 for ATL, and \$35 for TRI.

Schedule Weekly Summary Report for all nonstop Passenger (All) flights from AVL for travel September 2014 vs. September 2013

Mktg AI	Travel Period			Sep 2014		Sep 2013		Diff		Percent Diff	
	Orig	Dest	Miles	Ops/Week	Seats	Ops/Week	Seats	Ops/Week	Seats	Ops/Week	Seats
DL	ATL	AVL	164	41	3,072	51	3,040	(10)	32	(19.6%)	1.1%
DL	AVL	ATL	164	41	3,046	51	3,040	(10)	6	(19.6%)	0.2%
DL	AVL	DTW	470	7	350	7	350	0	0	0.0%	0.0%
DL	DTW	AVL	470	7	350	7	350	0	0	0.0%	0.0%
G4	AVL	FLL	660	2	332	2	332	0	0	0.0%	0.0%
G4	AVL	PBI	620	2	354	0	0	2	354		
G4	AVL	PGD	588	2	332	0	0	2	332		
G4	AVL	PIE	518	2	354	2	332	0	22	0.0%	6.6%
G4	AVL	SFB	465	2	354	2	332	0	22	0.0%	6.6%
G4	FLL	AVL	660	2	332	2	332	0	0	0.0%	0.0%
G4	PBI	AVL	620	2	354	0	0	2	354		
G4	PGD	AVL	588	2	332	0	0	2	332		
G4	PIE	AVL	518	2	354	2	332	0	22	0.0%	6.6%
G4	SFB	AVL	465	2	354	2	332	0	22	0.0%	6.6%
UA	AVL	EWR	583	7	350	7	350	0	0	0.0%	0.0%
UA	AVL	ORD	536	23	1,150	16	800	7	350	43.8%	43.8%
UA	EWR	AVL	583	7	350	7	350	0	0	0.0%	0.0%
UA	ORD	AVL	536	23	1,150	16	800	7	350	43.8%	43.8%
US	AVL	CLT	92	47	2,953	52	3,011	(5)	(58)	(9.6%)	(1.9%)
US	CLT	AVL	92	47	2,953	52	3,011	(5)	(58)	(9.6%)	(1.9%)
TOTAL				270	19,176	278	17,094	(8)	2,082	(2.9%)	12.2%

Schedule Weekly Summary Report for all nonstop Passenger (All) flights from AVL for travel October 2014 vs. October 2013

Mktg AI	Travel Period			Oct 2014		Oct 2013		Diff		Percent Diff	
	Orig	Dest	Miles	Ops/Week	Seats	Ops/Week	Seats	Ops/Week	Seats	Ops/Week	Seats
DL	ATL	AVL	164	40	3,218	49	3,044	(9)	174	(18.4%)	5.7%
DL	AVL	ATL	164	40	3,218	49	3,044	(9)	174	(18.4%)	5.7%
DL	AVL	DTW	470	7	350	7	350	0	0	0.0%	0.0%
DL	DTW	AVL	470	7	350	7	350	0	0	0.0%	0.0%
G4	AVL	FLL	660	3	498	2	332	1	166	50.0%	50.0%
G4	AVL	PBI	620	2	354	0	0	2	354		
G4	AVL	PGD	588	2	332	0	0	2	332		
G4	AVL	PIE	518	4	708	3	498	1	210	33.3%	42.2%
G4	AVL	SFB	465	4	686	2	332	2	354	100.0%	106.6%
G4	FLL	AVL	660	3	498	2	332	1	166	50.0%	50.0%
G4	PBI	AVL	620	2	354	0	0	2	354		
G4	PGD	AVL	588	2	332	0	0	2	332		
G4	PIE	AVL	518	4	708	3	498	1	210	33.3%	42.2%
G4	SFB	AVL	465	4	686	2	332	2	354	100.0%	106.6%
UA	AVL	EWR	583	7	350	7	350	0	0	0.0%	0.0%
UA	AVL	ORD	536	23	1,150	14	700	9	450	64.3%	64.3%
UA	EWR	AVL	583	7	350	7	350	0	0	0.0%	0.0%
UA	ORD	AVL	536	23	1,150	14	700	9	450	64.3%	64.3%
US	AVL	CLT	92	54	3,269	54	3,226	0	43	0.0%	1.3%
US	CLT	AVL	92	54	3,269	54	3,226	0	43	0.0%	1.3%
TOTAL				292	21,830	276	17,664	16	4,166	5.8%	23.6%

Schedule Weekly Summary Report for all nonstop Passenger (All) flights from AVL for travel November 2014 vs. November 2013

Mktg AI	Travel Period			Nov 2014		Nov 2013		Diff		Percent Diff	
	Orig	Dest	Miles	Ops/Week	Seats	Ops/Week	Seats	Ops/Week	Seats	Ops/Week	Seats
DL	ATL	AVL	164	39	3,917	50	2,920	(11)	997	(22.0%)	34.1%
DL	AVL	ATL	164	39	3,917	50	2,920	(11)	997	(22.0%)	34.1%
DL	AVL	DTW	470	0	0	7	350	(7)	(350)	(100.0%)	(100.0%)
DL	DTW	AVL	470	0	0	7	350	(7)	(350)	(100.0%)	(100.0%)
G4	AVL	FLL	660	2	332	2	332	0	0	0.0%	0.0%
G4	AVL	PBI	620	2	332	0	0	2	332		
G4	AVL	PGD	588	2	332	2	332	0	0	0.0%	0.0%
G4	AVL	PIE	518	4	668	2	332	2	336	100.0%	101.2%
G4	AVL	SFB	465	3	502	2	332	1	170	50.0%	51.2%
G4	FLL	AVL	660	2	332	2	332	0	0	0.0%	0.0%
G4	PBI	AVL	620	2	332	0	0	2	332		
G4	PGD	AVL	588	2	332	2	332	0	0	0.0%	0.0%
G4	PIE	AVL	518	4	668	2	332	2	336	100.0%	101.2%
G4	SFB	AVL	465	3	502	2	332	1	170	50.0%	51.2%
UA	AVL	EWR	583	7	350	7	350	0	0	0.0%	0.0%
UA	AVL	ORD	536	7	350	8	400	(1)	(50)	(12.5%)	(12.5%)
UA	EWR	AVL	583	7	350	7	350	0	0	0.0%	0.0%
UA	ORD	AVL	536	7	350	8	400	(1)	(50)	(12.5%)	(12.5%)
US	AVL	CLT	92	54	3,154	53	3,219	1	(65)	1.9%	(2.0%)
US	CLT	AVL	92	54	3,154	53	3,219	1	(65)	1.9%	(2.0%)
TOTAL				240	19,874	266	17,134	(26)	2,740	(9.8%)	16.0%

Design Phase														
Project Number	Project Name	Project Description	Professional Services Consultant	Professional Services Contract	General Contractor	Original Construction Contract	Change Orders (thru 9/01/2014)	Percent of Original Contract	Board Approved Project Cost	Percent Complete	Expensed to Date (thru 9/01/2014)	Start Date	End Date	Current Project Status (as of 9/01/2014)
1	Airfield Re-Development Project	Budget for the complete project							\$64,000,000.00	4.1%	\$2,683,031.56			All Engineer contracts and expenses will be inclusive of budget.
1A	Airfield Re-Development Project	Phase I - Design Services	RS&H	\$447,983.00	N/A	N/A	\$0.00	0.00%	(Overall total included in above number)	72%	\$320,337.73	Dec-12	Sep-14	Bid Package 2 being reviewed with 90% set due in early October.
1B	Airfield Re-Development Project	Phase II - Design Services and Project Management.	RS&H	\$1,842,318.00	N/A	N/A	\$0.00	0.00%	(Overall total included in above number)	20.0%	\$387,604.38	Jun-13	Dec-15	Project Management work continues to establish bid documents for Bid Package 2. RPR services in place.
1C	Airfield Re-Development Project	Temporary Runway/Taxiway Design	AVCON	\$1,837,826.00	N/A	N/A	\$0.00	0.00%	(Overall total included in above number)	70.0%	\$1,295,697.46	Mar-13	Dec-14	Bid Package 2 Construction of Temporary Runway/Taxiway 90% plans to be completed.
1D	Airfield Re-Development Project	New Runway Design	Michael Baker Engineering Inc.	\$2,299,934.00	N/A	N/A	\$0.00	0.00%	(Overall total included in above number)	17.5%	\$397,257.94	Mar-13	Mar-14	30% plans turned in for review by Project Manager.
1E	Airfield Re-Development Project	Miscellaneous and Administrative Expenses			N/A	N/A	\$0.00	0.00%	(Overall total included in above number)		\$362,789.70	Jan-13	Dec-17	Misc. and Administrative expenses outside of the Engineers contracts

Construction Phase														
Project Number	Project Name	Project Description	Professional Services Consultant	Professional Services Contract	General Contractor	Original Construction Contract	Change Orders (thru 9/01/2014)	Percent of Original Contract	Board Approved Project Cost	Percent Complete	Expensed to Date (thru 9/01/2014)	Start Date	End Date	Current Project Status (as of 9/01/2014)
1	Westside Phase 2	Construction for the Westside Project to level land utilizing engineered ash to fill and top with soil embankment/cap for future development.	AVCON	\$349,732.00	Charah	N/A	\$0.00	0.00%	\$349,732.00* (project expenses are being reimbursed by Charah through a separate agreement)	72.5%	\$251,990.63	Feb-11	Jul-15	Work continues as weather permits.
2	Westside Area 3	Construction for the Westside Project to level land utilizing engineered ash to fill and top with soil embankment/cap for future development.	AVCON	\$278,060.00	Charah	N/A	\$0.00	0.00%	\$278,060 * (project expenses are being reimbursed by Charah through a separate agreement)	56.0%	\$157,148.29	Mar-13	Jul-15	Area 3 ash placement will continue in North cells, weather permitting.
3	ARFF Facility Construction	Design, Project Management and Construction of a new Aircraft Rescue Fire Fighting Building.	LPA/BAKER	\$541,409.00	Goforth Builders Inc.	\$4,122,500.00	\$162,231.79	4.00%	\$543,409.00 (Design) & \$4,534,750.00 (Construction)	93.0%	\$4,669,534.11	Jun-13	Aug-14	Ribbon cutting ceremony performed August 20th. Punch list items continue to be worked on by Contractor. Close out information, which includes As-Builts to be received next month.
4	Temporary Runway 17-35 Site Preparation and Grading	Site preparation, drainage and retaining wall construction for new temporary runway/taxiway.	RS&H and AVCON, Inc.	Amount included in Phase 1 Design Fees	Thalle Construction Company, Inc.	\$8,856,193.00	\$0.00	0.00%	\$9,741,812.30	7.0%	\$2,636,465.00	Jun-14	Dec-14	Sediment basin construction and retaining wall preparations are under way. Temporary fencing is in place and required land purchase processed.

Amounts are based on invoices received and processed through Development.