



JULY 2009

BOARD INFORMATION PACKAGE



MEMORANDUM

TO: Members of the Airport Authority

FROM: Lew Bleiweis, A.A.E.

DATE: July, 2009

Informational Reports:

- A. May, 2009 Traffic Report ([document](#))
- B. May, 2009 Monthly Financial Report ([document](#))
- C. July, 2009 Marketing and Public Relations Report ([document](#))
- D. July, 2009 Development/Project Status Report ([document](#))



MEMORANDUM

TO: Members of the Airport Authority

FROM: Lew S. Bleiweis, Airport Director

DATE: July, 2009

ITEM DESCRIPTION – Information Section Item A

May, 2009 Traffic Report – Asheville Regional Airport

SUMMARY

May 2009 overall passenger traffic numbers were up 1.9%. Passenger traffic numbers reflect a 4.5% increase in passenger enplanements from May 2008.

AIRLINE PERFORMANCE

Delta Airlines: Delta's May 2009 enplanements increased by 28.2% compared to May 2008. There were five (5) flight cancellations for the month.

Continental Airlines: Continental's May 2009 passenger enplanements increased by 8.5% compared to May 2008. There were no flight cancellations for the month.

Northwest Airlines: Year over Year passenger enplanements for Northwest in May 2009 were down 60.8%. A contributing factor of this decrease is due to a 64.7% decrease in the number of scheduled flights available to passengers. There were no flight cancellations for the month.

US Airways: US Airways' May 2009 passenger enplanements represent a 6.2% increase. There were four (4) flight cancellations for the month.

Monthly Traffic Report Asheville Regional Airport

May 2009



| Category | May 2009 | May 2008 | Percentage Change | *CYTD-2009 | *CYTD-2008 | Percentage Change | *MOV12-2009 | *MOV12-2008 | Percentage Change |
|----------------------------|-----------------------|-----------------------|-------------------|-----------------------|-----------------------|-------------------|-------------------------|-------------------------|-------------------|
| Passenger Traffic | | | | | | | | | |
| Enplaned | 24,796 | 23,730 | 4.5% | 106,551 | 99,121 | 7.5% | 286,909 | 285,020 | 0.7% |
| Deplaned | <u>24,666</u> | <u>24,825</u> | -0.6% | <u>105,397</u> | <u>99,589</u> | 5.8% | <u>284,256</u> | <u>280,728</u> | 1.3% |
| Total | 49,462 | 48,555 | 1.9% | 211,948 | 198,710 | 6.7% | 571,165 | 565,748 | 1.0% |
| Aircraft Operations | | | | | | | | | |
| Airlines | 9 | 91 | -90.1% | 88 | 477 | -81.6% | 976 | 1,538 | -36.5% |
| Commuter /Air Taxi | <u>1,518</u> | <u>1,660</u> | -8.6% | 6,623 | 6,762 | -2.1% | 18,823 | 18,900 | -0.4% |
| Subtotal | <u>1,527</u> | <u>1,751</u> | -12.8% | <u>6,711</u> | <u>7,239</u> | -7.3% | <u>19,799</u> | <u>20,438</u> | -3.1% |
| General Aviation | 3,742 | 5,852 | -36.1% | 16,211 | 21,482 | -24.5% | 48,048 | 59,248 | -18.9% |
| Military | <u>175</u> | <u>177</u> | -1.1% | <u>1,185</u> | <u>860</u> | 37.8% | <u>3,219</u> | <u>2,442</u> | 31.8% |
| Subtotal | <u>3,917</u> | <u>6,029</u> | -35.0% | <u>17,396</u> | <u>22,342</u> | -22.1% | <u>51,267</u> | <u>61,690</u> | -16.9% |
| Total | 5,444 | 7,780 | -30.0% | 24,107 | 29,581 | -18.5% | 71,066 | 82,128 | -13.5% |
| Fuel Gallons | | | | | | | | | |
| 100LL | 18,208 | 21,334 | -14.7% | 69,257 | 85,196 | -18.7% | 217,914 | 267,324 | -18.5% |
| Jet A (GA) | 89,731 | 127,168 | -29.4% | 315,995 | 461,768 | -31.6% | 1,220,042 | 1,607,537 | -24.1% |
| Subtotal | <u>107,939</u> | <u>148,502</u> | -27.3% | <u>385,252</u> | <u>546,964</u> | -29.6% | <u>1,437,956</u> | <u>1,874,861</u> | -23.3% |
| Jet A (A/L) | <u>213,797</u> | <u>220,236</u> | -2.9% | <u>987,199</u> | <u>1,038,415</u> | -4.9% | <u>2,837,168</u> | <u>2,774,643</u> | 2.3% |
| Total | 321,736 | 368,738 | -12.7% | 1,372,451 | 1,585,379 | -13.4% | 4,275,124 | 4,649,504 | -8.1% |

*CYTD = Calendar Year to Date and *Mov12 = Moving Twelve Months.

Thursday, June 25, 2009

Airline Enplanements, Seats, and Load Factors

Asheville Regional Airport

May 2009



| | May 2009 | May 2008 | Percentage Change | *CYTD-2009 | *CYTD-2008 | Percentage Change |
|-----------------------------|----------|----------|-------------------|------------|------------|-------------------|
| Continental Airlines | | | | | | |
| Enplanements | 3,260 | 3,005 | 8.5% | 10,341 | 10,511 | -1.6% |
| Seats | 4,200 | 4,174 | 0.6% | 16,100 | 15,143 | 6.3% |
| Load Factor | 77.6% | 72.0% | 7.8% | 64.2% | 69.4% | -7.5% |
| Delta Air Lines | | | | | | |
| Enplanements | 10,842 | 8,457 | 28.2% | 45,504 | 38,180 | 19.2% |
| Seats | 14,780 | 10,908 | 35.5% | 62,880 | 52,133 | 20.6% |
| Load Factor | 73.4% | 77.5% | -5.4% | 72.4% | 73.2% | -1.2% |
| Northwest Airlines | | | | | | |
| Enplanements | 1,368 | 3,487 | -60.8% | 10,656 | 14,138 | -24.6% |
| Seats | 1,550 | 4,400 | -64.8% | 13,950 | 21,200 | -34.2% |
| Load Factor | 88.3% | 79.3% | 11.4% | 76.4% | 66.7% | 14.5% |
| US Airways | | | | | | |
| Enplanements | 9,326 | 8,781 | 6.2% | 39,808 | 36,292 | 9.7% |
| Seats | 11,158 | 11,955 | -6.7% | 49,647 | 50,720 | -2.1% |
| Load Factor | 83.6% | 73.5% | 13.8% | 80.2% | 71.6% | 12.1% |
| Totals | | | | | | |
| Enplanements | 24,796 | 23,730 | 4.5% | 106,309 | 99,121 | 7.3% |
| Seats | 31,688 | 31,437 | 0.8% | 142,577 | 139,196 | 2.4% |
| Load Factor | 78.3% | 75.5% | 3.7% | 74.6% | 71.2% | 4.7% |

Thursday, June 25, 2009

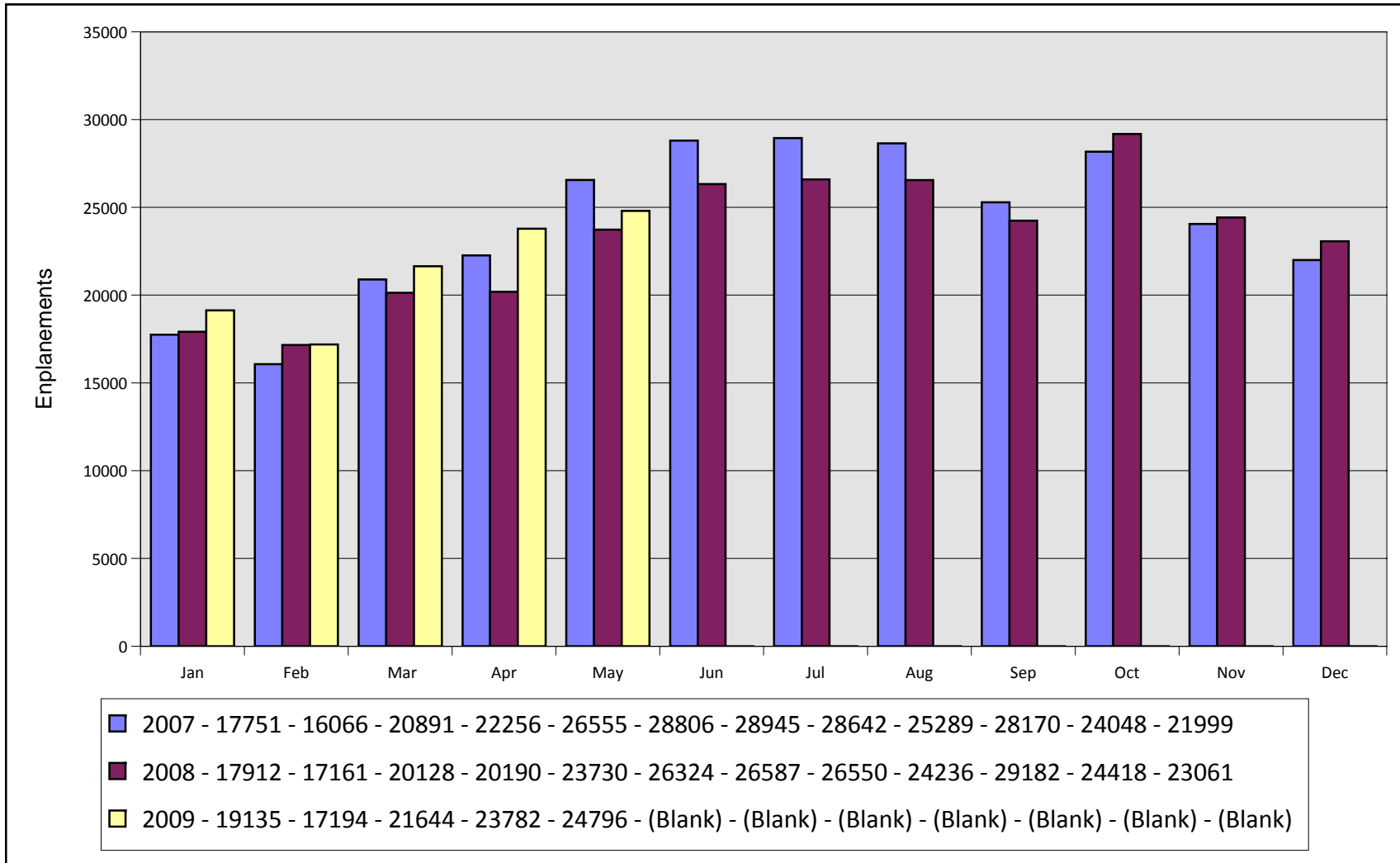
*CTYD = Calendar Year to Date and *Mov12 = Moving Twelve Months.

Airline Flight Completions Asheville Regional Airport May 2009

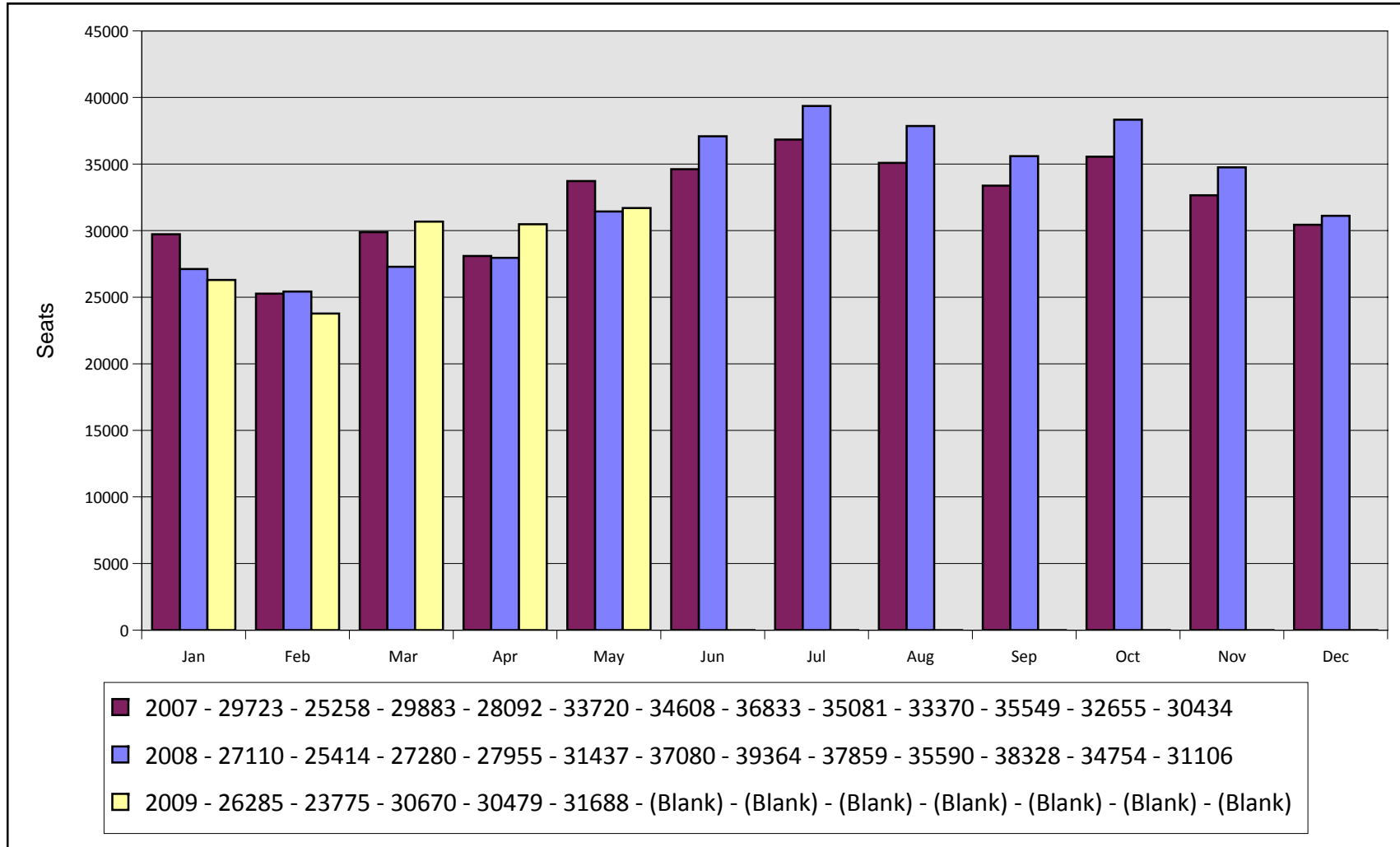


| Airline | Scheduled Flights | Field | Cancellations Due To | | | Total Cancellations | Percentage of Completed |
|----------------------|-------------------|----------|----------------------|----------|----------|---------------------|-------------------------|
| | | | Mechanical | Weather | Other | | |
| Continental Airlines | 84 | 0 | 0 | 0 | 0 | 0 | 100.0% |
| Delta Air Lines | 294 | 0 | 3 | 2 | 0 | 5 | 98.3% |
| Northwest Airlines | 31 | 0 | 0 | 0 | 0 | 0 | 100.0% |
| US Airways | 229 | 0 | 3 | 1 | 0 | 4 | 99.1% |
| Total | 638 | 0 | 6 | 3 | 0 | 9 | 98.6% |

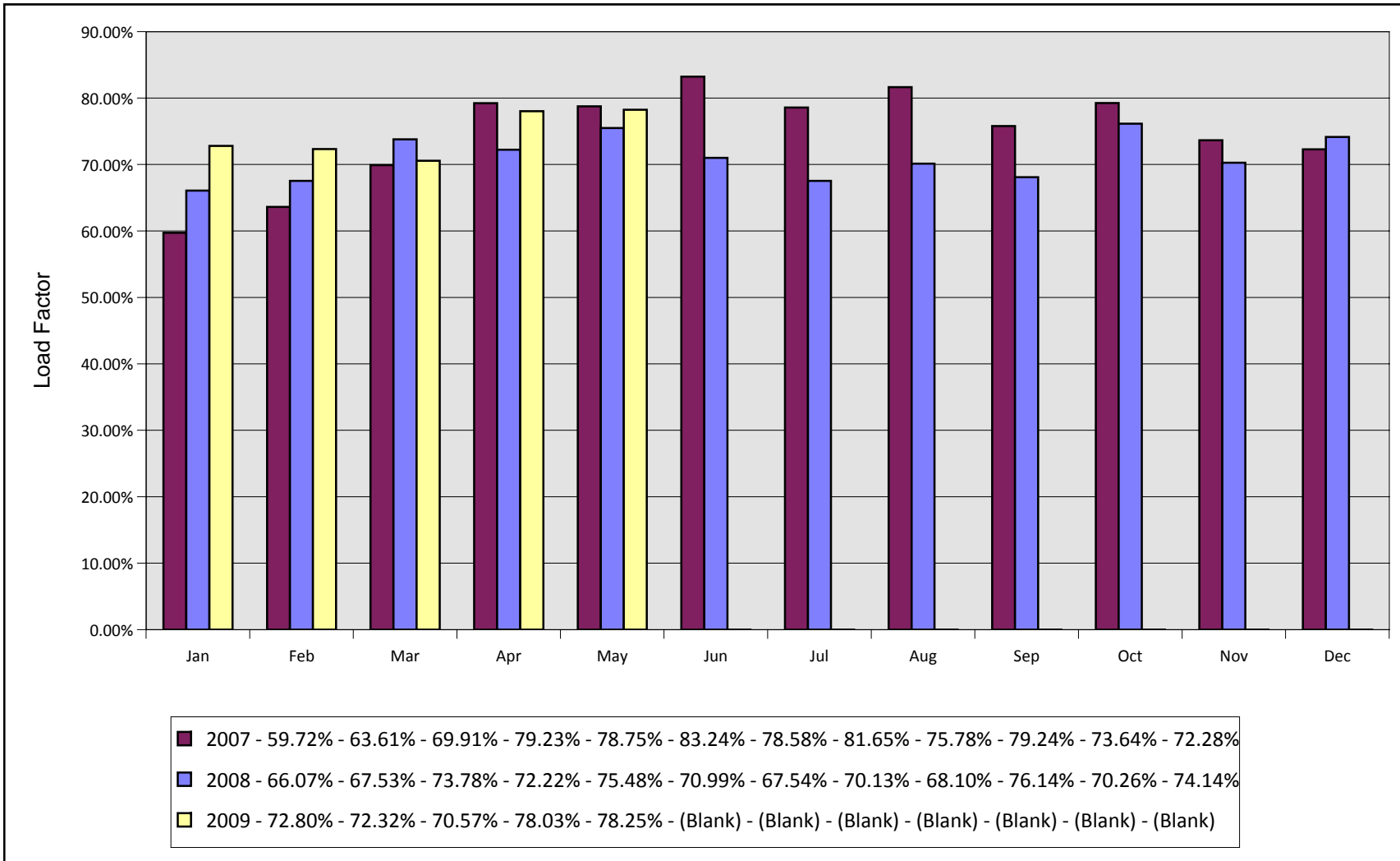
Monthly Enplanements By Year Asheville Regional Airport



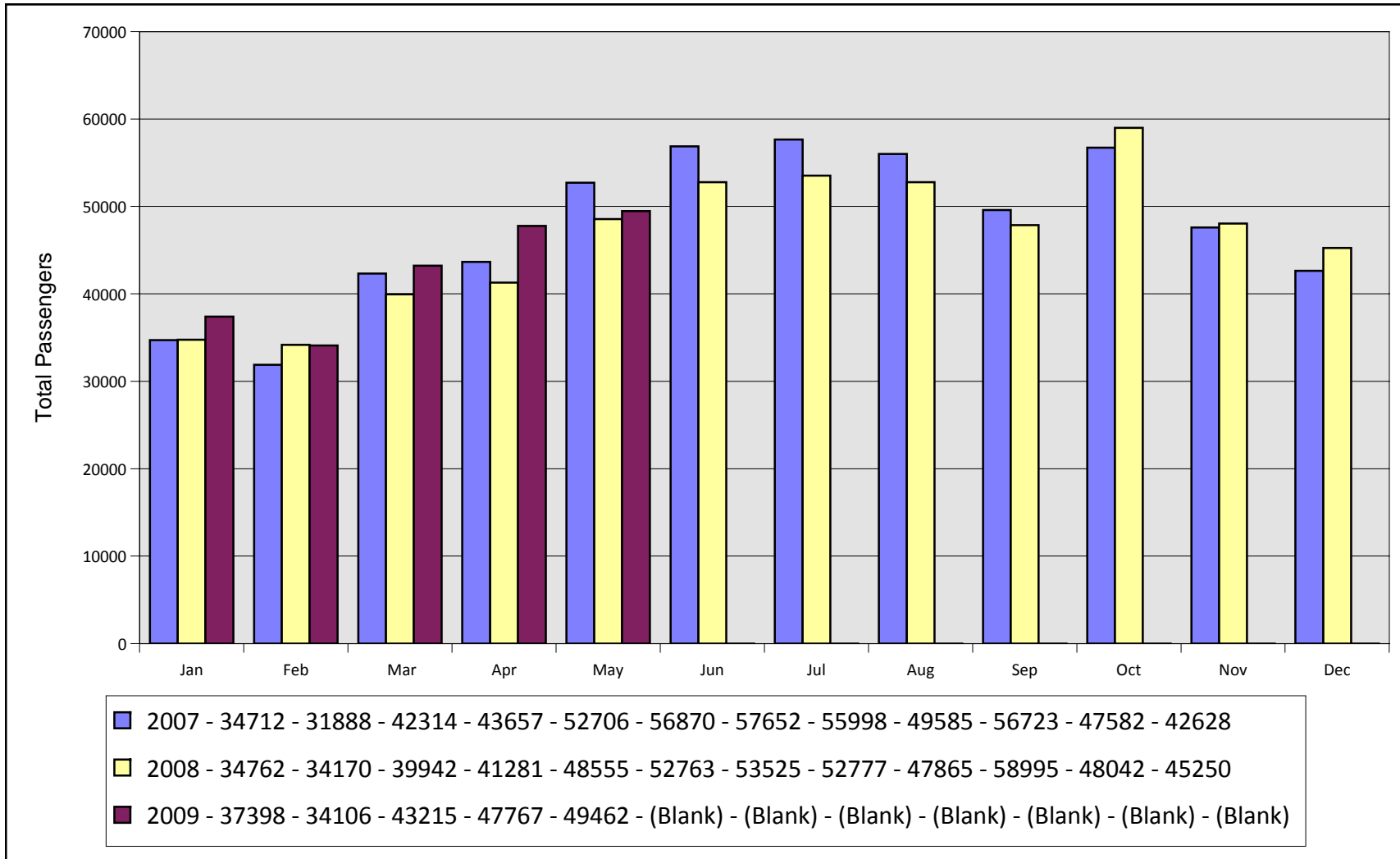
Monthly Seats By Year Asheville Regional Airport



Monthly Load Factors By Year Asheville Regional Airport

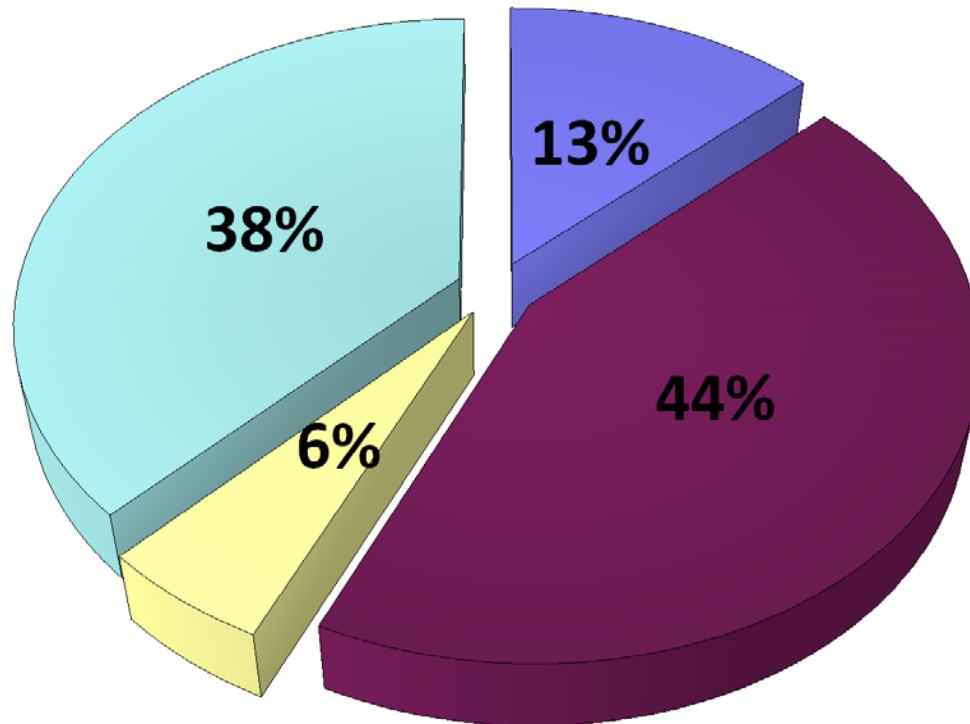


Total Monthly Passengers By Year Asheville Regional Airport

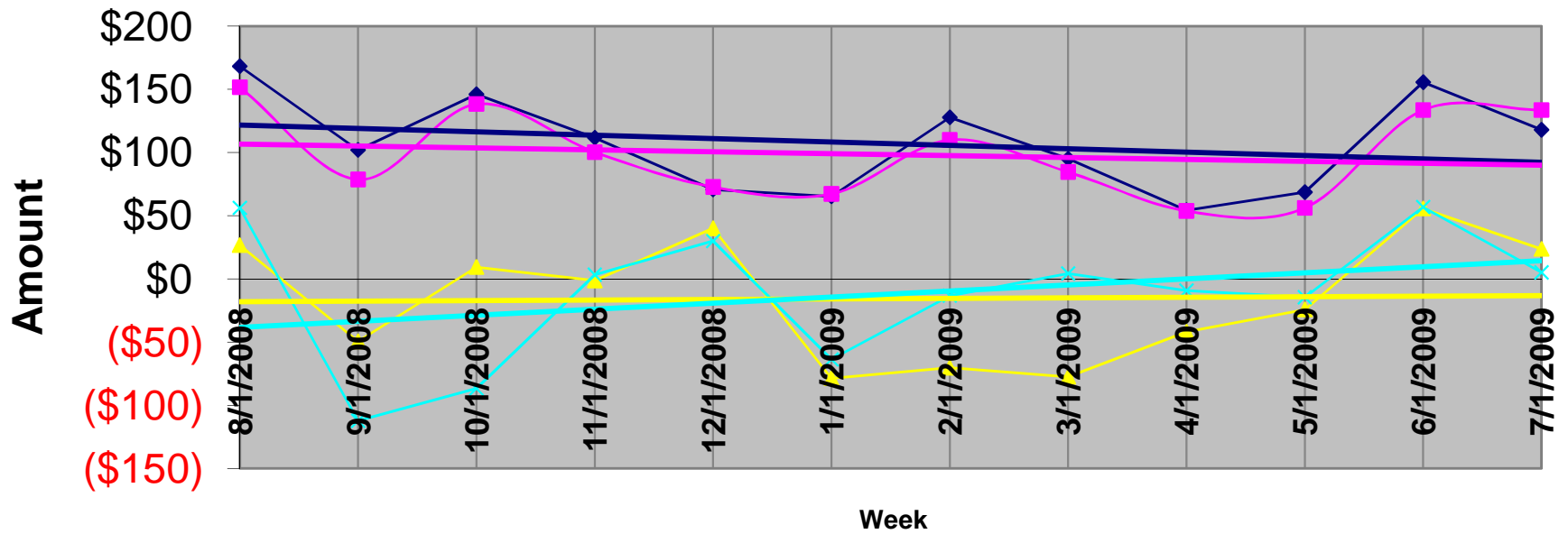


Airline Market Share Analysis (Enplanements) Asheville Regional Airport

Report Period From May 2009 Through May 2009



AVL Average Airfare Differences 21 Day Advance Purchase, 3 Day Stay



◆ ATL
 ■ CLT
 ▲ GSP
 ✦ TRI
 — Linear (ATL)
 — Linear (CLT)
 — Linear (GSP)
 — Linear (TRI)

Asheville Regional Airport
Sample airfares as of 06/30/09
21 Day Advance Purchase, 3 day Stay

| | | <u>Difference in Fares</u> | | | | | | | | |
|-----|------------------------|----------------------------|----------------|------------------|-------------------|-------------------|----------------|------------------|------------------|-------------------|
| | | <u>ASHEVILLE</u> | <u>ATLANTA</u> | <u>CHARLOTTE</u> | <u>GREENVILLE</u> | <u>TRI-CITIES</u> | <u>ATLANTA</u> | <u>CHARLOTTE</u> | <u>GREEVILLE</u> | <u>TRI-CITIES</u> |
| ABQ | Albuquerque | \$492 | \$318 | \$409 | \$322 | \$519 | \$174 | \$83 | \$170 | (\$27) |
| ATL | Atlanta | \$265 | | \$137 | \$258 | \$293 | \$265 | \$128 | \$7 | (\$28) |
| AUS | Austin | \$319 | \$348 | \$288 | \$391 | \$344 | (\$29) | \$31 | (\$72) | (\$25) |
| BWI | Baltimore | \$234 | \$209 | \$137 | \$272 | \$275 | \$25 | \$97 | (\$38) | (\$41) |
| BOS | Boston | \$387 | \$217 | \$197 | \$276 | \$313 | \$170 | \$190 | \$111 | \$74 |
| ORD | Chicago | \$294 | \$209 | \$273 | \$420 | \$271 | \$85 | \$21 | (\$126) | \$23 |
| CVG | Cincinnati | \$313 | \$197 | \$256 | \$216 | \$281 | \$116 | \$57 | \$97 | \$32 |
| CLE | Cleveland | \$347 | \$199 | \$277 | \$272 | \$234 | \$148 | \$70 | \$75 | \$113 |
| DFW | Dallas | \$343 | \$229 | \$277 | \$348 | \$357 | \$114 | \$66 | (\$5) | (\$14) |
| DEN | Denver | \$522 | \$269 | \$268 | \$362 | \$300 | \$253 | \$254 | \$160 | \$222 |
| DTW | Detroit | \$309 | \$199 | | \$262 | \$305 | \$110 | \$309 | \$47 | \$4 |
| FLL | Fort Lauderdale | \$240 | \$159 | \$177 | \$419 | \$267 | \$81 | \$63 | (\$179) | (\$27) |
| RSW | Ft. Myers | \$278 | \$209 | \$278 | \$358 | \$273 | \$69 | \$0 | (\$80) | \$5 |
| BDL | Hartford | \$400 | \$317 | \$248 | \$250 | \$297 | \$83 | \$152 | \$150 | \$103 |
| IAH | Houston | \$358 | \$217 | \$276 | \$311 | \$361 | \$141 | \$82 | \$47 | (\$3) |
| IND | Indianapolis | \$335 | \$199 | \$177 | \$250 | \$333 | \$136 | \$158 | \$85 | \$2 |
| JAX | Jacksonville | \$280 | \$179 | \$249 | \$392 | \$271 | \$101 | \$31 | (\$112) | \$9 |
| MCI | Kansas City | \$380 | \$209 | \$211 | \$266 | \$349 | \$171 | \$169 | \$114 | \$31 |
| LAS | Las Vegas | \$389 | \$299 | \$274 | \$371 | \$347 | \$90 | \$115 | \$18 | \$42 |
| LAX | Los Angeles | \$452 | \$299 | \$308 | \$396 | \$488 | \$153 | \$144 | \$56 | (\$36) |
| MHT | Manchester | \$401 | \$324 | \$198 | \$454 | \$237 | \$77 | \$203 | (\$53) | \$164 |
| MEM | Memphis | \$363 | \$174 | \$273 | \$238 | \$479 | \$189 | \$90 | \$125 | (\$116) |
| MIA | Miami | \$240 | \$169 | \$217 | \$421 | \$273 | \$71 | \$23 | (\$181) | (\$33) |
| MKE | Milwaukee | \$288 | \$214 | \$197 | \$291 | \$476 | \$74 | \$91 | (\$3) | (\$188) |
| MSP | Minneapolis/Saint Paul | \$357 | \$229 | \$297 | \$292 | \$416 | \$128 | \$60 | \$65 | (\$59) |
| BNA | Nashville | \$520 | \$303 | \$237 | \$420 | \$481 | \$217 | \$283 | \$100 | \$39 |
| MSY | New Orleans | \$397 | \$189 | \$237 | \$246 | \$494 | \$208 | \$160 | \$151 | (\$97) |
| LGA | New York | \$305 | \$229 | \$197 | \$292 | \$327 | \$76 | \$108 | \$13 | (\$22) |
| EWR | Newark | \$340 | \$239 | \$197 | \$272 | \$303 | \$101 | \$143 | \$68 | \$37 |
| MCO | Orlando | \$140 | \$199 | \$137 | \$352 | \$334 | (\$59) | \$3 | (\$212) | (\$194) |
| PHL | Philadelphia | \$248 | \$209 | \$148 | \$244 | \$297 | \$39 | \$100 | \$4 | (\$49) |
| PHX | Phoenix | \$408 | \$279 | \$327 | \$344 | \$390 | \$129 | \$81 | \$64 | \$18 |
| PIT | Pittsburgh | \$308 | \$199 | \$193 | \$262 | \$311 | \$109 | \$115 | \$46 | (\$3) |
| PDX | Portland | \$450 | \$499 | \$478 | \$456 | \$555 | (\$49) | (\$28) | (\$6) | (\$105) |
| PVD | Providence | \$335 | \$327 | \$238 | \$250 | \$257 | \$8 | \$97 | \$85 | \$78 |

| | | | | | | | | | | |
|-----|--------------------|-------|-------|-------|-------|-------|-------|-------|---------|---------|
| RDU | Raleigh/Durham | \$422 | \$169 | \$306 | \$242 | \$474 | \$253 | \$116 | \$180 | (\$52) |
| RIC | Richmond | \$280 | \$179 | \$278 | \$242 | \$484 | \$101 | \$2 | \$38 | (\$204) |
| STL | Saint Louis | \$386 | \$199 | \$168 | \$261 | \$261 | \$187 | \$218 | \$125 | \$125 |
| SLC | Salt Lake City | \$497 | \$320 | \$348 | \$368 | \$506 | \$177 | \$149 | \$129 | (\$9) |
| SAT | San Antonio | \$420 | \$229 | \$238 | \$291 | \$320 | \$191 | \$182 | \$129 | \$100 |
| SAN | San Diego | \$474 | \$339 | \$408 | \$479 | \$441 | \$135 | \$66 | (\$5) | \$33 |
| SFO | San Francisco | \$527 | \$339 | \$388 | \$455 | \$607 | \$188 | \$139 | \$72 | (\$80) |
| SRQ | Sarasota/Bradenton | \$464 | \$199 | \$238 | \$352 | \$273 | \$265 | \$226 | \$112 | \$191 |
| SEA | Seattle | \$528 | \$359 | \$413 | \$497 | \$440 | \$169 | \$115 | \$31 | \$88 |
| SYR | Syracuse | \$355 | \$347 | \$178 | \$344 | \$237 | \$8 | \$177 | \$11 | \$118 |
| TPA | Tampa | \$278 | \$199 | \$238 | \$356 | \$263 | \$79 | \$40 | (\$78) | \$15 |
| YYZ | Toronto | \$570 | \$452 | \$451 | \$455 | \$507 | \$118 | \$119 | \$115 | \$63 |
| DCA | Washington DC | \$250 | \$209 | \$178 | \$446 | \$312 | \$41 | \$72 | (\$196) | (\$62) |
| IAD | Washington DC | \$250 | \$209 | \$178 | \$446 | \$312 | \$41 | \$72 | (\$196) | (\$62) |
| PBI | West Palm Beach | \$337 | \$169 | \$257 | \$412 | \$273 | \$168 | \$80 | (\$75) | \$64 |

*These sample airfares were available 06/30/09, based on a 21 day advance purchase and a 3 day stay. Other restrictions may apply. To obtain the most up-to-date pricing information for your travel needs, please contact your professional travel agent or visit the following web sites: www.continental.com; www.delta.com; www.nwa.com; www.usairways.com; www.travelocity.com; www.orbitz.com; or www.expedia.com. Airfares are subject to change without notice - and lower airfares are often not available on all dates. Please see our "special airfares" section on our web site for any last minute airfare specials. Sample airfares will be updated each Tuesday.

\$118 \$110 \$24 \$5 Average Fare difference

Blue highlighted numbers represent fare differentials in excess of \$35 for GSP, \$70 for CLT, \$100 for ATL, and \$35 for TRI.

Asheville Regional Airport
Sample airfares as of 06/30/09
0 Day Advance Purchase, 3 day Stay

| | | <u>Difference in Fares</u> | | | | | | | | |
|-----|------------------------|----------------------------|----------------|------------------|-------------------|-------------------|----------------|------------------|-------------------|-------------------|
| | | <u>ASHEVILLE</u> | <u>ATLANTA</u> | <u>CHARLOTTE</u> | <u>GREENVILLE</u> | <u>TRI-CITIES</u> | <u>ATLANTA</u> | <u>CHARLOTTE</u> | <u>GREENVILLE</u> | <u>TRI-CITIES</u> |
| ABQ | Albuquerque | \$868 | \$768 | \$649 | \$1,091 | \$761 | \$100 | \$219 | (\$223) | \$107 |
| ATL | Atlanta | \$393 | | \$517 | \$388 | \$433 | \$393 | (\$124) | \$5 | (\$40) |
| AUS | Austin | \$751 | \$723 | \$701 | \$691 | \$738 | \$28 | \$50 | \$60 | \$13 |
| BWI | Baltimore | \$407 | \$511 | \$921 | \$851 | \$337 | (\$104) | (\$514) | (\$444) | \$70 |
| BOS | Boston | \$341 | \$360 | \$227 | \$404 | \$353 | (\$19) | \$114 | (\$63) | (\$12) |
| ORD | Chicago | \$549 | \$256 | \$443 | \$631 | \$351 | \$293 | \$106 | (\$82) | \$198 |
| CVG | Cincinnati | \$388 | \$475 | \$758 | \$283 | \$421 | (\$87) | (\$370) | \$105 | (\$33) |
| CLE | Cleveland | \$809 | \$418 | \$586 | \$312 | \$740 | \$391 | \$223 | \$497 | \$69 |
| DFW | Dallas | \$738 | \$648 | \$759 | \$767 | \$482 | \$90 | (\$21) | (\$29) | \$256 |
| DEN | Denver | \$621 | \$290 | | \$823 | \$731 | \$331 | \$621 | (\$202) | (\$110) |
| DTW | Detroit | \$537 | \$521 | | \$737 | \$746 | \$16 | \$537 | (\$200) | (\$209) |
| FLL | Fort Lauderdale | \$373 | \$352 | \$498 | \$952 | \$387 | \$21 | (\$125) | (\$579) | (\$14) |
| RSW | Ft. Myers | \$889 | \$467 | \$569 | \$848 | \$573 | \$422 | \$320 | \$41 | \$316 |
| BDL | Hartford | \$451 | \$329 | \$248 | \$293 | \$321 | \$122 | \$203 | \$158 | \$130 |
| IAH | Houston | \$840 | \$564 | \$718 | \$791 | \$723 | \$276 | \$122 | \$49 | \$117 |
| IND | Indianapolis | \$743 | \$477 | \$302 | \$460 | \$700 | \$266 | \$441 | \$283 | \$43 |
| JAX | Jacksonville | \$314 | \$427 | \$278 | \$888 | \$311 | (\$113) | \$36 | (\$574) | \$3 |
| MCI | Kansas City | \$435 | \$581 | \$539 | \$790 | \$353 | (\$146) | (\$104) | (\$355) | \$82 |
| LAS | Las Vegas | \$558 | \$607 | \$688 | \$508 | \$410 | (\$49) | (\$130) | \$50 | \$148 |
| LAX | Los Angeles | \$703 | \$581 | \$747 | \$825 | \$516 | \$122 | (\$44) | (\$122) | \$187 |
| MHT | Manchester | \$440 | \$533 | \$479 | \$597 | \$257 | (\$93) | (\$39) | (\$157) | \$183 |
| MEM | Memphis | \$868 | \$398 | | \$813 | \$853 | \$470 | \$868 | \$55 | \$15 |
| MIA | Miami | \$560 | \$336 | \$579 | \$570 | \$573 | \$224 | (\$19) | (\$10) | (\$13) |
| MKE | Milwaukee | \$410 | \$336 | \$237 | \$409 | \$621 | \$74 | \$173 | \$1 | (\$211) |
| MSP | Minneapolis/Saint Paul | \$531 | \$501 | \$607 | \$691 | \$580 | \$30 | (\$76) | (\$160) | (\$49) |
| BNA | Nashville | \$829 | \$715 | \$237 | \$745 | \$1,169 | \$114 | \$592 | \$84 | (\$340) |
| MSY | New Orleans | \$807 | \$578 | \$537 | \$833 | \$778 | \$229 | \$270 | (\$26) | \$29 |
| LGA | New York | \$456 | \$487 | \$342 | \$829 | \$477 | (\$31) | \$114 | (\$373) | (\$21) |
| EWR | Newark | \$398 | \$433 | \$382 | \$362 | \$784 | (\$35) | \$16 | \$36 | (\$386) |
| MCO | Orlando | \$484 | \$332 | \$231 | \$818 | \$573 | \$152 | \$253 | (\$334) | (\$89) |
| PHL | Philadelphia | \$367 | \$504 | \$464 | \$339 | \$337 | (\$137) | (\$97) | \$28 | \$30 |
| PHX | Phoenix | \$598 | \$730 | \$592 | \$820 | \$528 | (\$132) | \$6 | (\$222) | \$70 |
| PIT | Pittsburgh | \$395 | \$383 | \$419 | \$332 | \$312 | \$12 | (\$24) | \$63 | \$83 |
| PDX | Portland | \$733 | | \$585 | \$1,010 | \$861 | \$733 | \$148 | (\$277) | (\$128) |
| PVD | Providence | \$524 | \$537 | \$454 | \$290 | \$257 | (\$13) | \$70 | \$234 | \$267 |

| | | | | | | | | | | |
|-----|--------------------|---------|---------|-------|---------|---------|---------|--------|---------|------------------------------|
| RDU | Raleigh/Durham | \$948 | \$269 | \$646 | \$736 | \$992 | \$679 | \$302 | \$212 | (\$44) |
| RIC | Richmond | \$773 | \$418 | \$561 | \$732 | \$1,022 | \$355 | \$212 | \$41 | (\$249) |
| STL | Saint Louis | \$715 | \$472 | \$601 | | \$561 | \$243 | \$114 | \$715 | \$154 |
| SLC | Salt Lake City | \$837 | | \$658 | \$996 | \$699 | \$837 | \$179 | (\$159) | \$138 |
| SAT | San Antonio | \$826 | \$649 | \$319 | \$822 | \$598 | \$177 | \$507 | \$4 | \$228 |
| SAN | San Diego | \$712 | \$607 | \$742 | \$940 | \$797 | \$105 | (\$30) | (\$228) | (\$85) |
| SFO | San Francisco | \$781 | \$786 | \$798 | \$1,010 | \$736 | (\$5) | (\$17) | (\$229) | \$45 |
| SRQ | Sarasota/Bradenton | \$858 | \$449 | \$593 | \$782 | \$573 | \$409 | \$265 | \$76 | \$285 |
| SEA | Seattle | \$667 | \$656 | \$692 | \$935 | \$631 | \$11 | (\$25) | (\$268) | \$36 |
| SYR | Syracuse | \$406 | \$582 | \$458 | \$789 | \$403 | (\$176) | (\$52) | (\$383) | \$3 |
| TPA | Tampa | \$558 | \$447 | \$618 | \$820 | \$396 | \$111 | (\$60) | (\$262) | \$162 |
| YYZ | Toronto | \$1,201 | \$1,093 | \$856 | \$641 | \$1,200 | \$108 | \$345 | \$560 | \$1 |
| DCA | Washington DC | \$460 | \$478 | \$310 | \$1,063 | \$489 | (\$18) | \$150 | (\$603) | (\$29) |
| IAD | Washington DC | \$460 | \$478 | \$310 | \$1,074 | \$489 | (\$18) | \$150 | (\$614) | (\$29) |
| PBI | West Palm Beach | \$753 | \$352 | \$638 | \$731 | \$573 | \$401 | \$115 | \$22 | \$180 |
| | | | | | | | \$143 | \$119 | (\$76) | \$31 Average Fare difference |

*These sample airfares were available 06/30/09, based on a 0 day advance purchase and a 3 day stay. Other restrictions may apply. To obtain the most up-to-date pricing information for your travel needs, please contact your professional travel agent or visit the following web sites: www.continental.com; www.delta.com; www.nwa.com; www.usairways.com; www.travelocity.com; www.orbitz.com; or www.expedia.com. Airfares are subject to change without notice - and lower airfares are often not available on all dates. Please see our "special airfares" section on our web site for any last minute airfare specials. Sample airfares will be updated each Tuesday.

Blue highlighted numbers represent fare differentials in excess of \$35 for GSP, \$70 for CLT, \$100 for ATL, and \$35 for TRI.

Schedule Compare Report for all Airlines for Passenger flights between AVL and ALL for Jul09 vs. Jul08

| AI | Ops/Week | | | | Seats/Week | | | |
|-------|----------|-------|------|---------|------------|--------|--------|---------|
| | Jul09 | Jul08 | Diff | Pct Chg | Jul09 | Jul08 | Diff | Pct Chg |
| DL | 142 | 122 | 20 | 16.39 | 7,100 | 6,704 | 396 | 5.91 |
| FL | 6 | 0 | 6 | 100.00 | 702 | 0 | 702 | 100.00 |
| US | 98 | 126 | -28 | -22.22 | 4,900 | 5,754 | -854 | -14.84 |
| NW | 14 | 56 | -42 | -75.00 | 700 | 2,800 | -2,100 | -75.00 |
| CO | 28 | 72 | -44 | -61.11 | 1,400 | 3,548 | -2,148 | -60.54 |
| TOTAL | 288 | 376 | -88 | -23.40 | 14,802 | 18,806 | -4,004 | -21.29 |

Schedule Compare Report for all Airlines for Passenger flights between AVL and ALL for Aug09 vs. Aug08

| AI | Ops/Week | | | | Seats/Week | | | |
|-------|----------|-------|------|---------|------------|--------|--------|---------|
| | Aug09 | Aug08 | Diff | Pct Chg | Aug09 | Aug08 | Diff | Pct Chg |
| DL | 139 | 106 | 33 | 31.13 | 6,950 | 6,274 | 676 | 10.77 |
| FL | 6 | 0 | 6 | 100.00 | 702 | 0 | 702 | 100.00 |
| US | 98 | 124 | -26 | -20.97 | 4,900 | 5,680 | -780 | -13.73 |
| NW | 14 | 42 | -28 | -66.67 | 700 | 2,100 | -1,400 | -66.67 |
| CO | 28 | 72 | -44 | -61.11 | 1,400 | 3,548 | -2,148 | -60.54 |
| TOTAL | 285 | 344 | -59 | -17.15 | 14,652 | 17,602 | -2,950 | -16.76 |

Schedule Compare Report for all Airlines for Passenger flights between AVL and ALL for Sep09 vs. Sep08

| AI | Ops/Week | | | | Seats/Week | | | |
|-------|------------|--------|------|---------|------------|--------|--------|---------|
| | Sept09 | Sept08 | Diff | Pct Chg | Sept09 | Sept08 | Diff | Pct Chg |
| DL | 138 | 116 | 22 | 18.97 | 6,900 | 6,518 | 382 | 5.86 |
| FL | 6 | 0 | 6 | 100 | 702 | 0 | 702 | 100 |
| CO | 38 | 40 | -2 | -5 | 1,900 | 2,000 | -100 | -5 |
| NW | 14 | 40 | -26 | -65 | 700 | 2,000 | -1,300 | -65 |
| US | 98 | 126 | -28 | -22.22 | 4,848 | 6,348 | -1,500 | -23.63 |
| TOTAL | 294 | 322 | -28 | -8.7 | 15,050 | 16,866 | -1,816 | -10.77 |



MEMORANDUM

TO: Members of the Airport Authority

FROM: Sarah Silver, Accounting Coordinator II

DATE: July 2009

ITEM DESCRIPTION – Information Section Item B

Asheville Regional Airport – Explanation of Extraordinary Variances
Month Ended May 31, 2009 (Month 11 of FY-2009)

SUMMARY

Operating Revenue (page 5 of 13) for the month of May was \$581,604; 11.06% below the budgeted amount. Year-to-date Operating Revenue is 6.03% or \$415,335 below the budget figure. Operating Expenses (page 5 of 13) were 11.05% lower than the budget amount on a year-to-date basis. Passenger Facility Charges earned were \$101,438. Operating Revenue from operations and land use before depreciation was \$114,439 for the month of May 2009.

REVENUES

Operating Revenue for the month of May 2009 was \$5,368 lower than the amount of Operating Revenue at the Airport for the month of May 2008 (\$586,972).

| | | |
|----------------------------------|----------|--|
| Concessions | 76.57% | Corrected revenue timing issue |
| Commercial Ground Transportation | 213.69% | Timing of GT permits billed on an annual basis |
| Landing Fees | (34.77%) | Reduction in airline flight schedules. |
| FBO's/SASO's | (27.94%) | Reductions in fuel sales |
| Other Leases/Fees | (45.66%) | Adjustment of receivables due from tenants |
| CFC Revenue | 100.40% | Corrected revenue timing issue |
| Interest Revenue | (85.84%) | Low interest rates |

Year to date Operating Revenue is \$6,468,580; or 6.03% below the budget figure.



EXPENSES

Total Operating Expenses for the month were 12.01% lower than the budget amount.

| | | |
|-------------------------------------|-----------|--|
| Professional Services | (20.68%) | Lower than budgeted expenses |
| Accounting & Auditing | (100.00%) | Timing of annual fiscal audit |
| Other Contractual Services | (33.36%) | Lower than budgeted expenses |
| Repairs & Maintenance | (31.84%) | Lower than budgeted repairs & maintenance |
| Other Current Charges & Obligations | 206.87% | Increased legal notices and employment ads; misc expense adjustments |
| Office Supplies | 61.11% | Increase of purchases |
| Operating Supplies | (21.72%) | Lower than budgeted Operating Supplies |
| Books, Publications, Subscriptions | (70.14%) | Lower than budgeted Publications expense; Timing of Dues and Memberships |

STATEMENT OF NET ASSETS

No significant changes to the Statement of Net Assets.

**ASHEVILLE REGIONAL AIRPORT
INVESTMENT AND INTEREST INCOME SUMMARY
For the Month Ended May 2009**

| <u>Institution:</u> | <u>Date of Purchase</u> | <u>Date of Maturity</u> | <u>Interest Rate</u> | <u>Investment Amount</u> | <u>Monthly Interest</u> |
|---------------------------------|-------------------------|-------------------------|----------------------|----------------------------|-------------------------|
| Bank of America | | | 0.17% | \$ 953,910 | 191 |
| Petty Cash | | | | 100 | |
| NC Capital Trust | | | | 4,565,744 | 2,279 |
| Restricted Cash: | | | | | |
| PFC Revenue Account | | | 0.11% | 1,108,800 | 94 |
| Wachovia-Gov. Advantage Acct. | | | 0.13% | 608,972 | 199 |
| CFC Revenue | | | 0.10% | 815,590 | 67 |
| <u>Commercial Paper:</u> | | | | 0 | |
| Total | | | | <u>\$ 8,053,116</u> | <u>\$ 2,830</u> |

| <u>Investment Diversification:</u> | |
|------------------------------------|----------------|
| 1.BANKS | 35.74% |
| 2.CAP.TRUST | 56.70% |
| 3.GOV.ADV.ACCT. | 7.56% |
| 4.COM.PAPER | 0.00% |
| 5. FED. AGY | 0% |
| | <u>100.00%</u> |

**ASHEVILLE REGIONAL AIRPORT
STATEMENT OF CHANGES IN FINANCIAL POSITION
For the Month Ended May 2009**

| | <u>Month</u> | <u>Prior Period</u> |
|--|----------------------------|----------------------------|
| Cash and Investments Beginning of Period (Month 05-01-2009, Prior Period 4-01-09) | \$ 9,341,942 | \$ 9,478,100 |
| Net Income before Contributions | 160,814 | 774,214 |
| Depreciation | 242,097 | 242,218 |
| Decrease/(Increase) in Receivables | (238,069) | (286,113) |
| Increase/(Decrease) in Payables | (978,738) | 150,353 |
| Decrease/(Increase) in Prepaid Expenses | 17,093 | 18,106 |
| Decrease/(Increase) in Long Term Assets | (739,251) | (968,807) |
| Contributed Capital | - | - |
| Capital Funds | 278,438 | (32,871) |
| Carryback of Payments to Prior Period | | |
| Bonds Payable - Current | (31,210) | (33,258) |
| Bonds Payable - Non-Current | | |
| Increase(Decrease) in Cash | <u>(1,288,826)</u> | <u>(136,158)</u> |
| Cash and Investments End of Period (05/31/2009) | <u>\$ 8,053,116</u> | <u>\$ 9,341,942</u> |

Asheville Regional Airport Authority
Cost Centers Statement of Revenue, Expenses and Changes in Net Assets

For the Month Ending May 31, 2009

| | <u>May Actual</u> | <u>May Budget</u> | <u>Variance %</u> | <u>YTD Actual</u> | <u>YTD Budget</u> | <u>Variance %</u> | <u>Annual Budget</u> |
|---|-----------------------|-----------------------|-------------------|-----------------------|-----------------------|-------------------|--------------------------|
| Operating Revenue: | | | | | | | |
| Terminal | \$272,686 | \$269,294 | 1.26% | \$3,039,379 | \$2,962,231 | 2.60% | \$3,231,525 |
| Airfield | 63,691 | 85,807 | (25.77%) | 634,082 | 943,874 | (32.82%) | 1,029,681 |
| Hangar | 64,419 | 89,400 | (27.94%) | 528,349 | 673,944 | (21.60%) | 763,344 |
| Parking Lot/Roadway | 170,149 | 194,158 | (12.37%) | 2,139,453 | 2,135,740 | 0.17% | 2,329,898 |
| Land Use Fees | 10,659 | 15,284 | (30.26%) | 127,318 | 168,126 | (24.27%) | 183,410 |
| Total Operating Revenue | <u>\$581,604</u> | <u>\$653,944</u> | <u>(11.06%)</u> | <u>\$6,468,580</u> | <u>\$6,883,915</u> | <u>(6.03%)</u> | <u>\$7,537,858</u> |
| Operating Expenses: | | | | | | | |
| Administrative | \$412,199 | \$221,456 | 86.13% | \$3,424,644 | \$2,606,741 | 31.38% | \$2,822,231 |
| Terminal | 40,221 | 201,987 | (80.09%) | 1,357,921 | 2,221,860 | (38.88%) | 2,423,847 |
| Airfield | 12,773 | 104,716 | (87.80%) | 645,075 | 1,151,879 | (44.00%) | 1,256,595 |
| Hangar | - | 614 | (100.00%) | 2,295 | 6,749 | (65.99%) | 7,363 |
| Parking Lot | - | 1,534 | (100.00%) | (118,375) | 16,874 | (801.52%) | 18,408 |
| Rental Car Service Facility | 1,973 | - | 0.00% | 33,126 | - | 0.00% | - |
| Land Use Expenses | - | 614 | (100.00%) | 2,175 | 6,749 | (67.77%) | 7,363 |
| Total Operating Expenses | <u>\$467,165</u> | <u>\$530,921</u> | <u>(12.01%)</u> | <u>\$5,346,863</u> | <u>\$6,010,852</u> | <u>(11.05%)</u> | <u>\$6,535,807</u> |
| Operating Revenue before Depreciation | | | | | | | |
| | \$114,439 | \$123,023 | (6.98%) | \$1,121,717 | \$873,063 | 28.48% | \$1,002,051 |
| Depreciation | <u>242,097</u> | <u>230,705</u> | <u>4.94%</u> | <u>2,680,777</u> | <u>2,537,756</u> | <u>5.64%</u> | <u>2,768,461</u> |
| Operating Income(Loss) Before Non-Operating Revenue and Expenses | | | | | | | |
| | (\$127,658) | (\$107,682) | 18.55% | (\$1,559,060) | (\$1,664,693) | (6.35%) | (\$1,766,410) |
| Non-Operating Revenue and Expense | | | | | | | |
| Customer Facility Charges | 132,768 | 66,250 | 100.40% | 778,480 | 728,750 | 6.82% | 795,000 |
| Passenger Facility Charges | 101,438 | 100,000 | 1.44% | 1,137,440 | 1,100,000 | 3.40% | 1,200,000 |
| Interest Revenue | 2,833 | 20,000 | (85.84%) | 116,955 | 220,000 | (46.84%) | 240,000 |
| Interest Expense | (21,026) | (21,026) | 0.00% | (242,490) | (239,407) | 1.29% | (260,282) |
| Sale of Assets | - | - | - | - | - | 0.00% | - |
| Non-Operating Revenue-Net | <u>\$216,013</u> | <u>\$165,224</u> | <u>30.74%</u> | <u>\$1,790,385</u> | <u>\$1,809,343</u> | <u>(1.05%)</u> | <u>\$1,974,718</u> |

| | | | | | | | |
|---|-------------------------|------------------------|--------------------|---------------------------|-------------------------|-------------------------|-------------------------|
| Income (Loss) Before Capital Contributions | <u>\$88,355</u> | <u>\$57,541</u> | <u>54%</u> | <u>\$231,325</u> | <u>\$144,650</u> | <u>59.92%</u> | <u>\$208,308</u> |
| Capital Contributions | \$72,460 | \$0 | 0.00% | \$3,228,129 | \$0 | 0.00% | \$0 |
| Increase in Net Assets | <u><u>\$160,815</u></u> | <u><u>\$57,541</u></u> | <u><u>179%</u></u> | <u><u>\$3,459,454</u></u> | <u><u>\$144,650</u></u> | <u><u>2,291.60%</u></u> | <u><u>\$208,308</u></u> |

Asheville Regional Airport Authority
Detailed Statement of Revenue, Expenses and Changes in Net Assets

For the Month Ending May 31, 2009

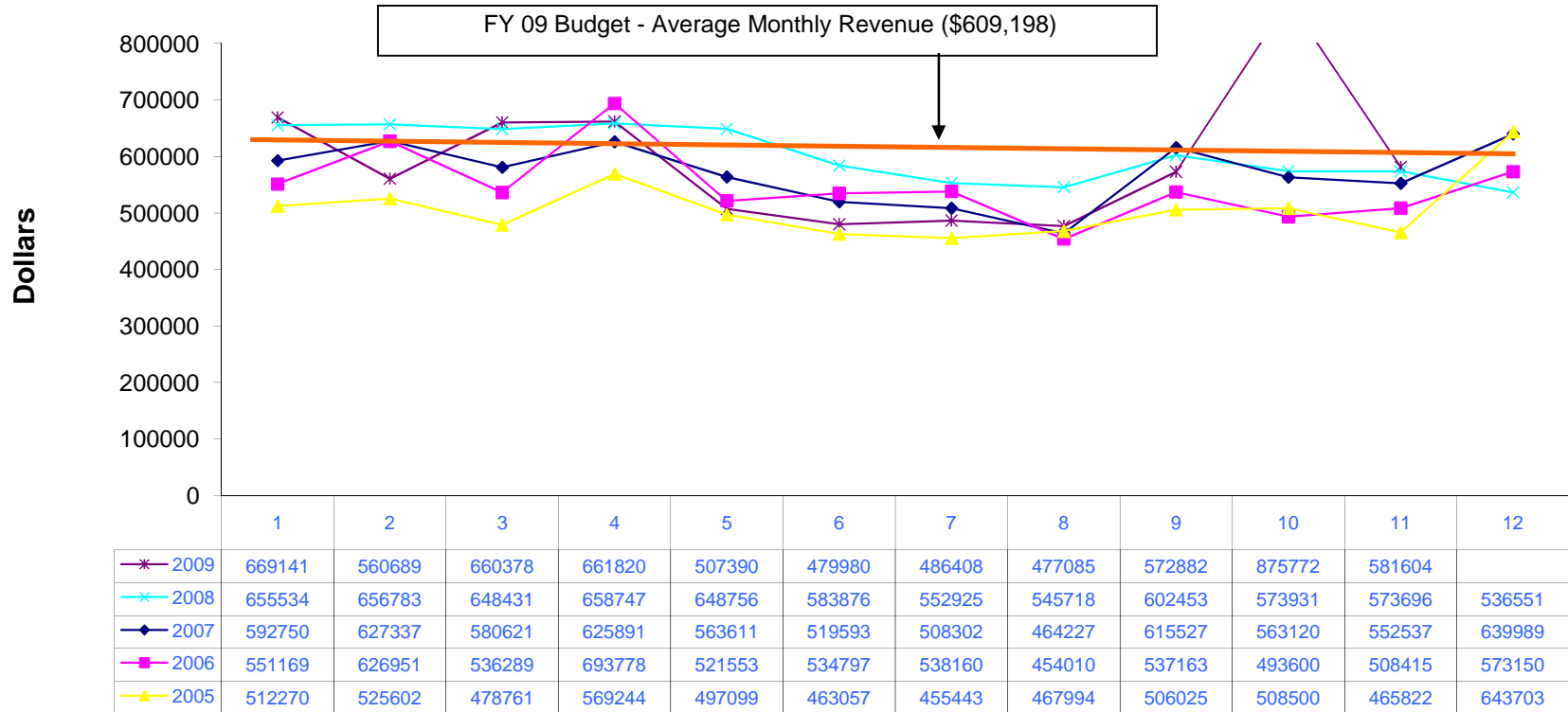
| | <u>May Actual</u> | <u>May Budget</u> | <u>Variance %</u> | <u>YTD Actual</u> | <u>YTD Budget</u> | <u>Variance %</u> | <u>Annual Budget</u> |
|--|-----------------------|-----------------------|-------------------|-----------------------|-----------------------|-------------------|--------------------------|
| Operating Revenue: | | | | | | | |
| Terminal Space Rentals - Non Airline | \$15,395 | \$15,633 | (1.52%) | \$180,200 | \$171,967 | 4.79% | \$187,600 |
| Terminal Space Rentals - Airline | 100,063 | 90,982 | 9.98% | 987,966 | 1,000,803 | (1.28%) | 1,091,785 |
| Concessions | 17,966 | 10,175 | 76.57% | 118,017 | 111,925 | 5.44% | 122,100 |
| Auto Parking | 165,849 | 193,107 | (14.12%) | 2,113,575 | 2,124,173 | (0.50%) | 2,317,280 |
| Rental Car - Car Rentals | 103,499 | 109,167 | (5.19%) | 1,165,460 | 1,200,833 | (2.95%) | 1,310,000 |
| Rental Car - Facility Rent | 43,715 | 40,727 | 7.34% | 448,798 | 447,993 | 0.18% | 488,720 |
| Commercial Ground Transportation | 3,300 | 1,052 | 213.69% | 21,878 | 11,567 | 89.14% | 12,618 |
| Landing Fees | 35,135 | 53,866 | (34.77%) | 337,256 | 592,529 | (43.08%) | 646,395 |
| FBO'S/SASO'S | 64,419 | 89,400 | (27.94%) | 535,131 | 673,944 | (20.60%) | 763,344 |
| Building Leases | 8,753 | 9,296 | (5.84%) | 87,733 | 102,254 | (14.20%) | 111,550 |
| Land Leases | 2,906 | 2,625 | 10.70% | 36,062 | 28,875 | 24.89% | 31,500 |
| Other Leases/Fees | 20,604 | 37,914 | (45.66%) | 436,504 | 417,052 | 4.66% | 454,966 |
| Total Operating Revenue | \$581,604 | \$653,944 | (11.06%) | \$6,468,580 | \$6,883,915 | (6.03%) | \$7,537,858 |
| Operating Expenses: | | | | | | | |
| Personnel Services | \$269,174 | \$301,245 | (10.65%) | \$2,911,705 | \$3,311,317 | (12.07%) | \$3,612,562 |
| Professional Services | 12,895 | 16,257 | (20.68%) | 129,711 | 178,828 | (27.47%) | 195,085 |
| Accounting & Auditing | - | 2,854 | (100.00%) | 26,553 | 31,396 | (15.43%) | 34,250 |
| Other Contractual Services | 39,704 | 59,581 | (33.36%) | 493,315 | 587,257 | (16.00%) | 639,522 |
| Travel & Training | 19,701 | 20,946 | (5.94%) | 133,168 | 182,004 | (26.83%) | 198,500 |
| Communications & Freight | 4,541 | 4,004 | 13.41% | 55,180 | 44,102 | 25.12% | 48,118 |
| Utility Services | 29,446 | 25,986 | 13.31% | 372,639 | 339,094 | 9.89% | 368,158 |
| Rentals & Leases | 1,012 | 883 | 14.61% | 17,096 | 9,709 | 76.08% | 10,592 |
| Insurance | 17,292 | 17,292 | 0.00% | 191,850 | 190,208 | 0.86% | 207,500 |
| Repairs & Maintenance | 16,529 | 24,252 | (31.84%) | 302,957 | 309,636 | (2.16%) | 333,388 |
| Printing & Binding | 15,540 | 13,934 | 11.53% | 164,772 | 181,387 | (9.16%) | 201,031 |
| Promotional Activities | 6,444 | 5,577 | 15.55% | 63,528 | 62,448 | 1.73% | 64,825 |
| Other Current Charges & Obligations | 15,804 | 5,150 | 206.87% | 52,373 | 56,650 | (7.55%) | 61,800 |
| Office Supplies | 2,262 | 1,404 | 61.11% | 16,624 | 16,146 | 2.96% | 17,550 |
| Operating Supplies | 15,984 | 20,420 | (21.72%) | 202,780 | 239,870 | (15.46%) | 260,990 |
| Books, Publications, Subscriptions & Mem | 837 | 2,803 | (70.14%) | 25,741 | 38,379 | (32.93%) | 41,182 |
| Contingency | - | 8,333 | (100.00%) | 46,117 | 91,667 | (49.69%) | 100,000 |
| Business Development/Agreement Obligat | - | - | 0.00% | 140,754 | 140,754 | 0.00% | 140,754 |
| Total Operating Expenses | \$467,165 | \$530,921 | (12.01%) | \$5,346,863 | \$6,010,852 | (11.05%) | \$6,535,807 |

| | | | | | | | |
|---|-------------------------|------------------------|--------------------|---------------------------|-------------------------|-------------------------|-------------------------|
| Operating Revenue before Depreciation | \$114,439 | \$123,023 | (6.98%) | \$1,121,717 | \$873,063 | 28.48% | \$1,002,051 |
| Depreciation | <u>242,097</u> | <u>230,705</u> | <u>4.94%</u> | <u>2,680,777</u> | <u>2,537,756</u> | <u>5.64%</u> | <u>2,768,461</u> |
| Operating Income(Loss) Before Non-Operating Revenue and Expenses | (\$127,658) | (\$107,682) | 18.55% | (\$1,559,060) | (\$1,664,693) | (6.35%) | (\$1,766,410) |
| Non-Operating Revenue and Expense | | | | | | | |
| Customer Facility Charges | 132,768 | 66,250 | 100.40% | 778,480 | 728,750 | 6.82% | 795,000 |
| Passenger Facility Charges | 101,438 | 100,000 | 1.44% | 1,137,440 | 1,100,000 | 3.40% | 1,200,000 |
| Interest Revenue | 2,833 | 20,000 | (85.84%) | 116,955 | 220,000 | (46.84%) | 240,000 |
| Interest Expense | (21,026) | (21,026) | 0.00% | (242,490) | (239,407) | 1.29% | (260,282) |
| Sale of Assets | | | | - | | 0.00% | |
| Non-Operating Revenue-Net | <u>\$216,013</u> | <u>\$165,224</u> | <u>30.74%</u> | <u>\$1,790,385</u> | <u>\$1,809,343</u> | <u>(1.05%)</u> | <u>\$1,974,718</u> |
| Income (Loss) Before Capital Contributions | <u>\$88,355</u> | <u>\$57,542</u> | <u>54%</u> | <u>\$231,325</u> | <u>\$144,650</u> | <u>59.92%</u> | <u>\$208,308</u> |
| Capital Contributions | \$72,460 | \$0 | 0.00% | \$3,228,129 | \$0 | 0.00% | \$0 |
| Increase in Net Assets | <u><u>\$160,815</u></u> | <u><u>\$57,542</u></u> | <u><u>179%</u></u> | <u><u>\$3,459,454</u></u> | <u><u>\$144,650</u></u> | <u><u>2,291.60%</u></u> | <u><u>\$208,308</u></u> |

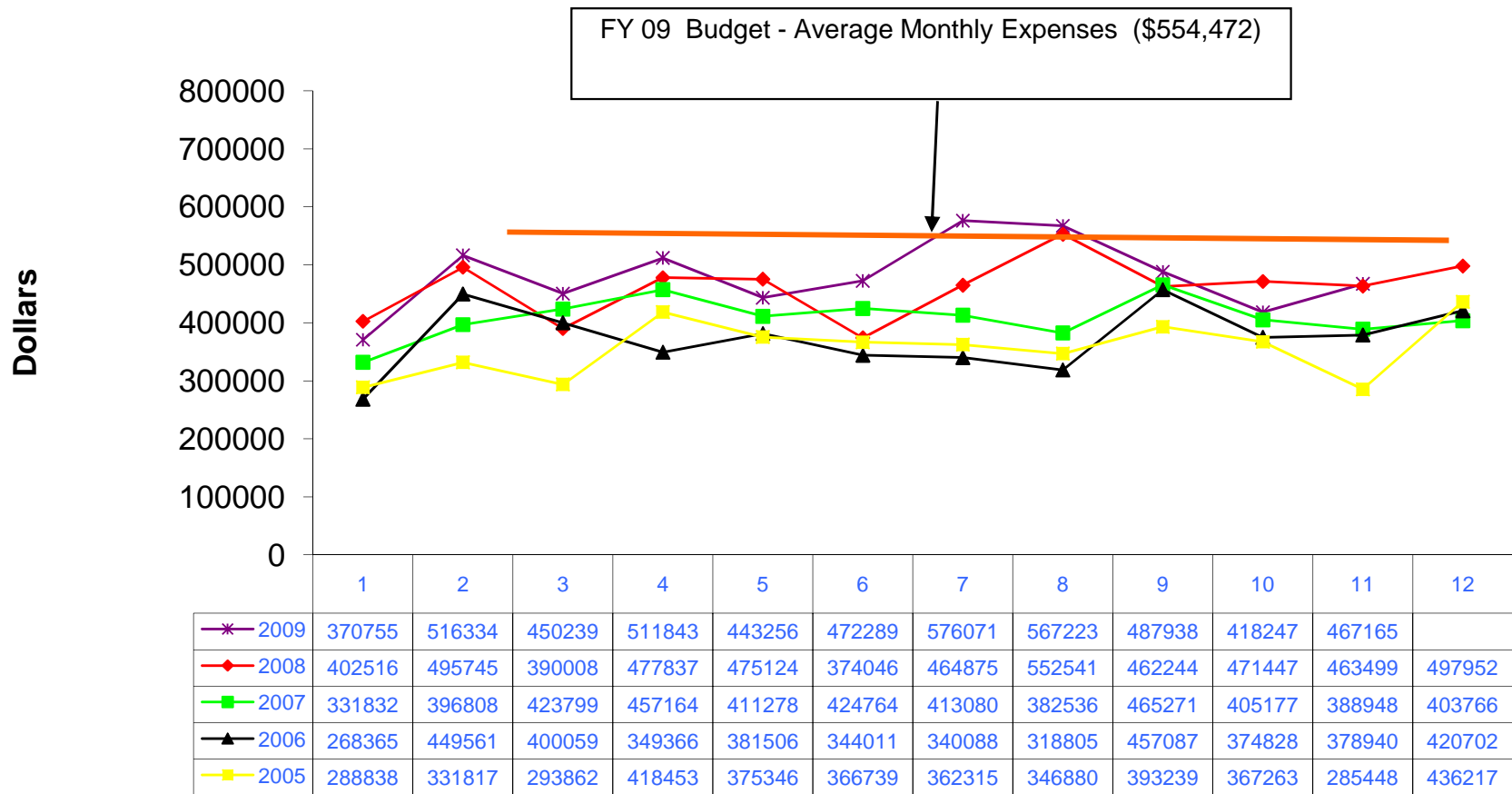
ASHEVILLE REGIONAL AIRPORT AUTHORITY
STATEMENT OF FINANCIAL POSITION
May 31, 2009

| | May | Last Month |
|---|--------------|-----------------------|
| ASSETS | | |
| Current Assets | | |
| Unrestricted Net Assets: | | |
| Cash and Cash Equivalents | \$5,519,754 | \$4,102,449 |
| Investments | 0 | 0 |
| Accounts Receivable | 604,947 | 366,878 |
| Prepaid Expenses | 17,896 | 34,989 |
| Total Unrestricted Assets | 6,142,597 | 4,504,316 |
| Restricted Assets: | | |
| Capital Funds | 1,550 | 317,427 |
| Cash and Cash Equivalents | 2,533,362 | 5,239,493 |
| Receivables | | |
| Passenger Facility Charge Funds: | | |
| Receivables | | |
| Total Restricted Assets | 2,534,912 | 5,556,920 |
| Total Current Assets | 8,677,509 | 10,061,236 |
| Noncurrent Assets | | |
| Capital Assets | 23,825,952 | 22,838,724 |
| Property and Equipment - Net | 36,258,473 | 36,711,108 |
| TOTAL ASSETS | \$68,761,934 | \$69,611,068 |
| LIABILITIES AND NET ASSETS | | |
| Liabilities | | |
| Accounts Payable | \$1,217,380 | \$1,596,584 |
| Accrued Liabilities | \$6,297 | \$120,000 |
| Total Payable from Unrestricted Assets | 1,223,677 | 1,716,584 |
| Payable from Restricted Assets: | | |
| Construction Contracts Payable | 0 | 0 |
| Construction Contract Retainages | 0 | 485,831 |
| Bonds Payable - Current Portion | 65,652 | 65,652 |
| Total Payable From Restricted Assets | 65,652 | 551,483 |
| Total Current Liabilities | 1,289,329 | 2,268,067 |
| Non-Current Liabilities: | | |
| Rental Car Project Bond | 4,260,794 | 4,292,003 |
| Total Non-Current Liabilities | 4,260,794 | 4,292,003 |
| Total Liabilities | 5,550,123 | 6,560,070 |
| Net Assets: | | |
| Invested in Capital Assets | 36,258,473 | 36,711,108 |
| Unrestricted | 26,953,339 | 26,339,891 |
| Total Net Assets | 63,211,812 | 63,050,999 |
| TOTAL LIABILITIES | \$68,761,934 | \$69,611,068 |

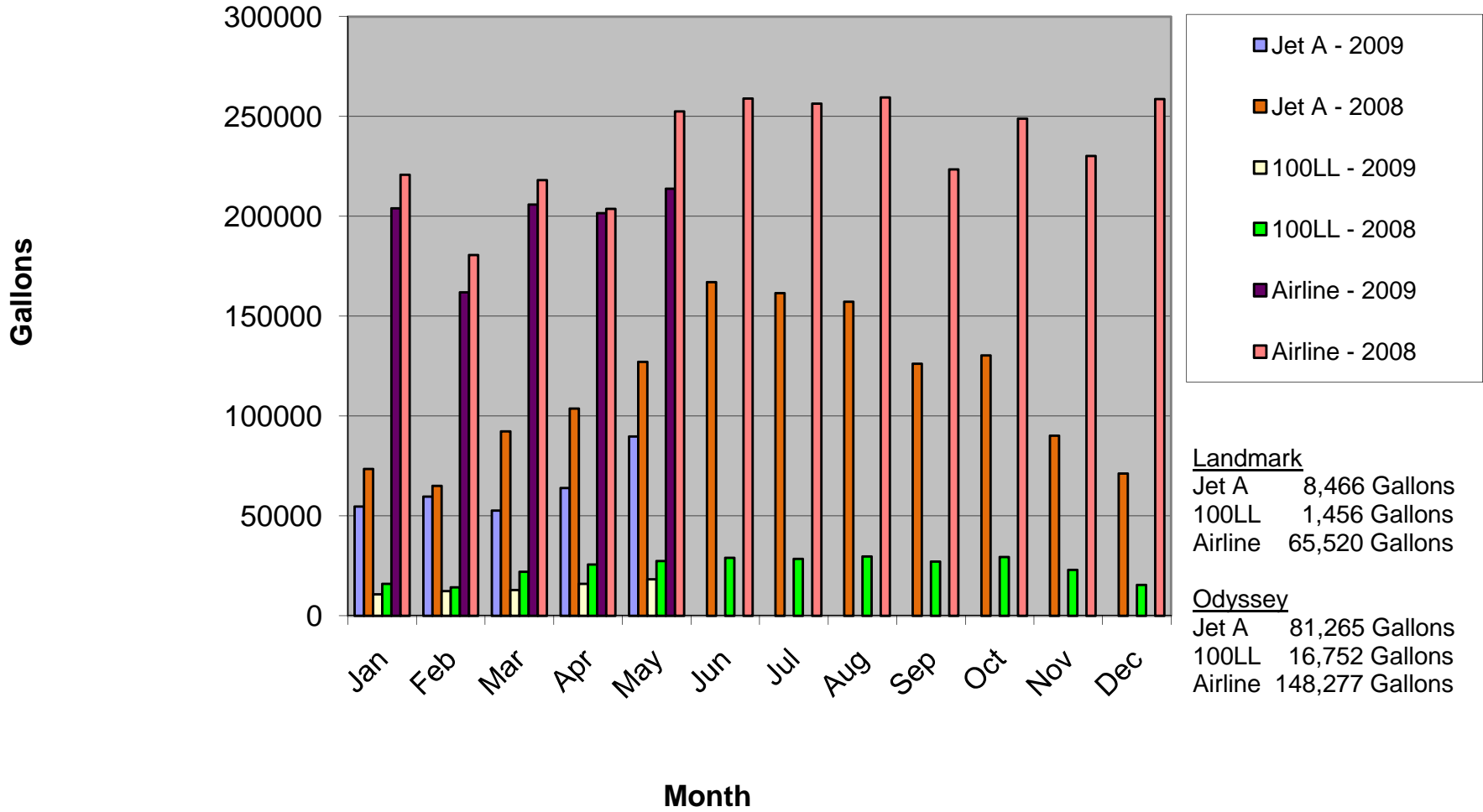
ASHEVILLE REGIONAL AIRPORT Annual Operating Revenue by Month May 2009



ASHEVILLE REGIONAL AIRPORT Annual Operating Expenses by Month May 2009

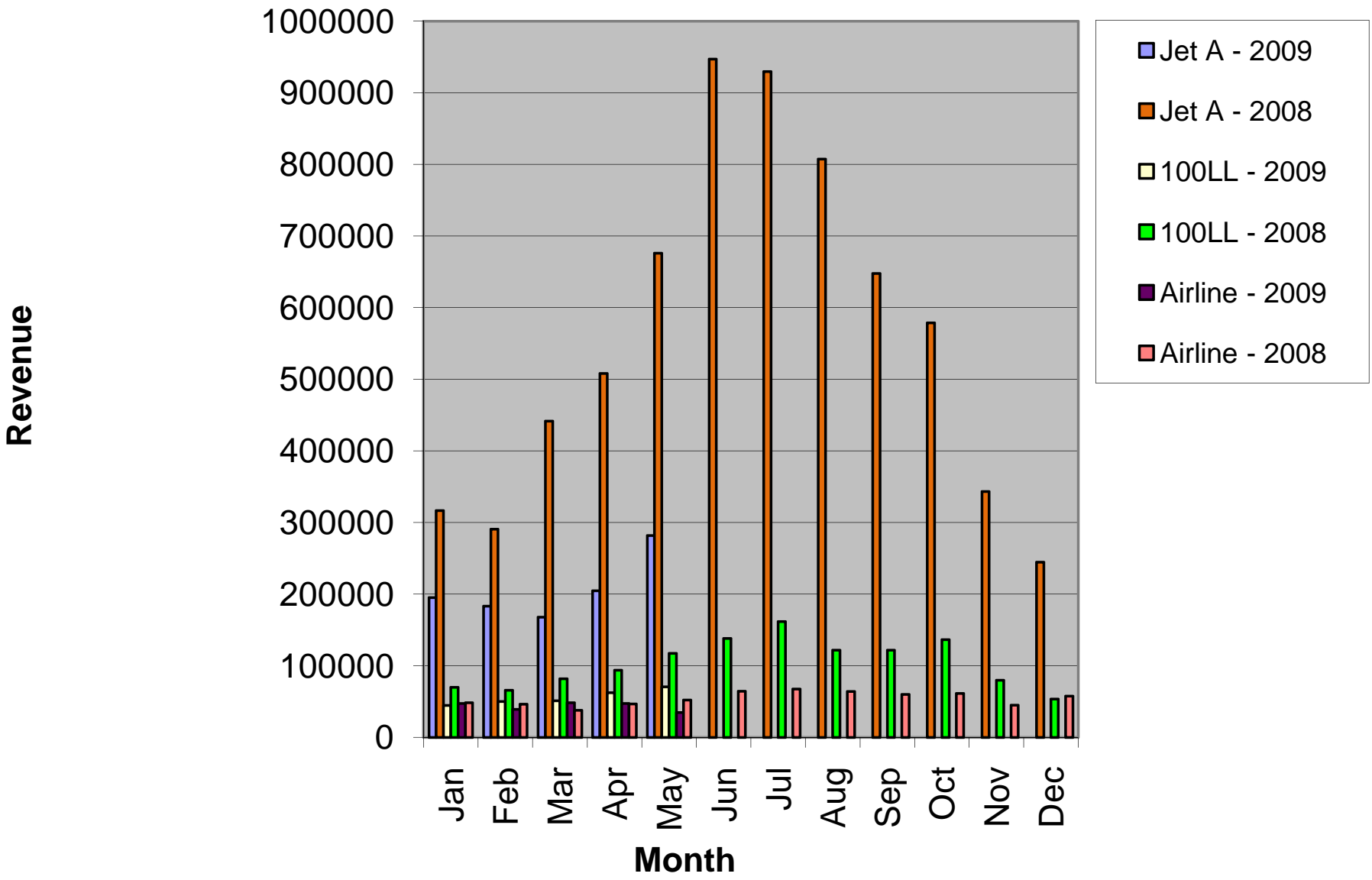


AVL Fuels Sales - Gallons May 2009



AVL Fuels Sales - Revenue

May 2009





MEMORANDUM

TO: Members of the Airport Authority

FROM: Patti L. Michel, Director of Marketing and Public Relations

DATE: July, 2009

ITEM DESCRIPTION – Information Section Item C

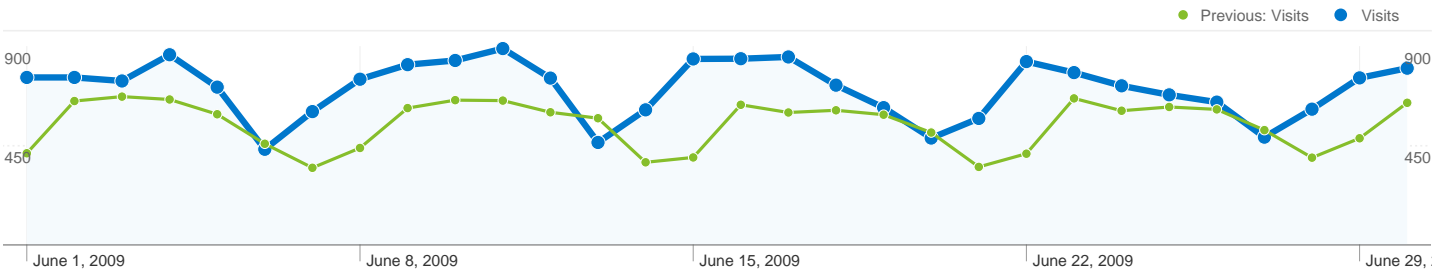
July, 2009 Marketing and Public Relations Report

- Completed artwork/creative for History Timeline Layout, Authority Board Graphics, Mission Statement Graphics, Art in the Airport Brochure, Art in the Airport Postcard, Art Gallery sign, Chamber Event ad, Dave Edwards' resolution plaque and photo/frame, Airport brochure redesign/printing, AirTran Banner/graphic for website – redesign.
- Completed 12 trips in 12 weeks promotion with STAR 104.3; completed Chicago Cubs promotion with ESPN/BigWISE
- Participated in the Butterfly Exhibit – Nectar Collector Days at the WNC Nature Center.
- Attended/Presented at the Marketing Communications Conference/Jumpstart; attended the Chamber Business after Hours Event and Annual Meeting.
- Prepared new requisitions and negotiated contracts for the new FY 2010 including AirTran marketing.
- Prepared annual evaluations for MPR and Guest Services team members.
- Continued transition of Clear Channel Interspace and Departure Media.
- Received an average of 39 phone calls per day during business hours.
- Received/responded to 5443 Southern Living leads for June.


Information Section – Item C



- Received/responded to 15 media calls during month of June.
- Website Statistics - Google Analytics: See attached data regarding June activity at www.flyavl.com
- Booking Engine Statistics – Since June 1, AVL has had 60 reservations for a total of \$480.00 in booking fees collected. 776 new people signed up to be booking engine members.



Site Usage

 **21,294 Visits**


Previous: 16,404 (29.81%)

 **42.01% Bounce Rate**


Previous: 35.35% (18.83%)

 **70,404 Pageviews**

Previous: 63,914 (10.15%)

 **00:03:32 Avg. Time on Site**

Previous: 00:06:55 (-48.97%)

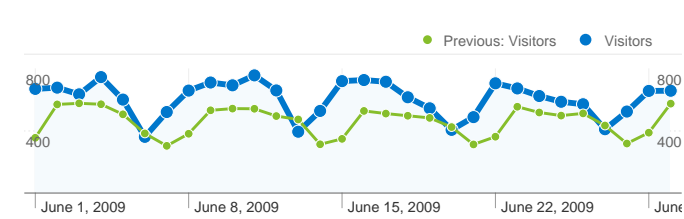
 **3.31 Pages/Visit**

Previous: 3.90 (-15.14%)

 **67.29% % New Visits**

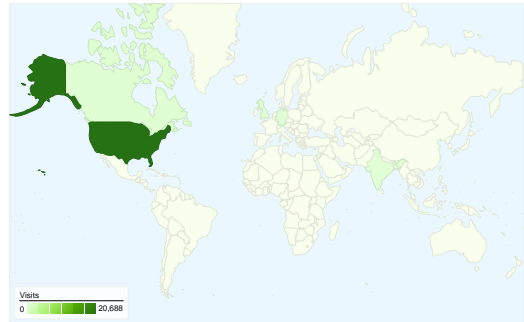
Previous: 67.02% (0.40%)

Visitors Overview

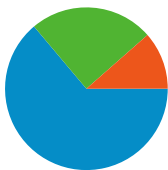


Visitors
16,125

Map Overlay world



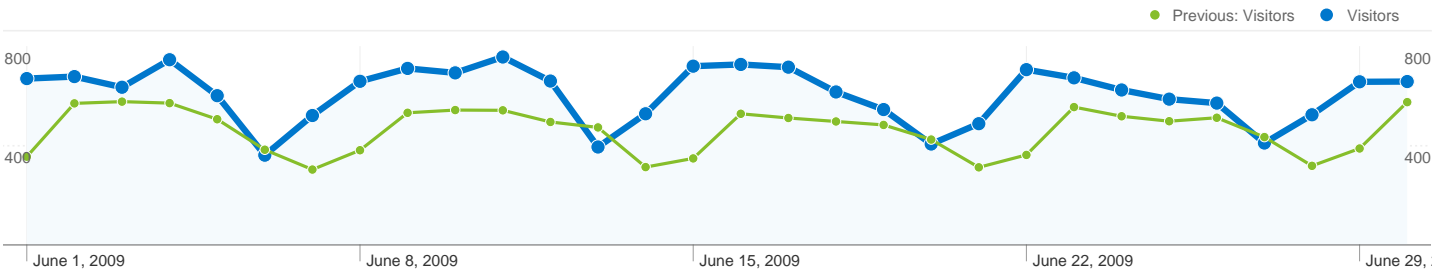
Traffic Sources Overview



- **Search Engines**
13,600.00 (63.87%)
- **Direct Traffic**
5,249.00 (24.65%)
- **Referring Sites**
2,443.00 (11.47%)
- **Other**
2 (0.01%)

| Referring Sites | | |
|----------------------------|---------|----------|
| Source | Visits | % visits |
| bing.com | | |
| Jun 1, 2009 - Jun 30, 2009 | 222 | 9.09% |
| Jun 1, 2008 - Jun 30, 2008 | 0 | 0.00% |
| % Change | 100.00% | 100.00% |
| biltmore.com | | |
| Jun 1, 2009 - Jun 30, 2009 | 102 | 4.18% |
| Jun 1, 2008 - Jun 30, 2008 | 114 | 5.52% |
| % Change | -10.53% | -24.30% |
| willowwinds.com | | |
| Jun 1, 2009 - Jun 30, 2009 | 81 | 3.32% |
| Jun 1, 2008 - Jun 30, 2008 | 81 | 3.92% |
| % Change | 0.00% | -15.39% |
| google.com | | |
| Jun 1, 2009 - Jun 30, 2009 | 73 | 2.99% |
| Jun 1, 2008 - Jun 30, 2008 | 47 | 2.27% |
| % Change | 55.32% | 31.41% |
| en.wikipedia.org | | |
| Jun 1, 2009 - Jun 30, 2009 | 69 | 2.82% |
| Jun 1, 2008 - Jun 30, 2008 | 57 | 2.76% |
| % Change | 21.05% | 2.42% |


| Content Overview | | |
|---------------------------------------|-----------|-------------|
| Pages | Pageviews | % Pageviews |
| / | | |
| Jun 1, 2009 - Jun 30, 2009 | 19,650 | 27.91% |
| Jun 1, 2008 - Jun 30, 2008 | 19,024 | 29.76% |
| % Change | 3.29% | -6.23% |
| /flights/flight-view---real-time.html | | |
| Jun 1, 2009 - Jun 30, 2009 | 6,754 | 9.59% |
| Jun 1, 2008 - Jun 30, 2008 | 8,210 | 12.85% |
| % Change | -17.73% | -25.32% |
| /flights/arrivals---real-time.html | | |
| Jun 1, 2009 - Jun 30, 2009 | 3,543 | 5.03% |
| Jun 1, 2008 - Jun 30, 2008 | 2,869 | 4.49% |
| % Change | 23.49% | 12.11% |
| /flights/flight-schedule-search.html | | |
| Jun 1, 2009 - Jun 30, 2009 | 2,871 | 4.08% |
| Jun 1, 2008 - Jun 30, 2008 | 1,621 | 2.54% |
| % Change | 77.11% | 60.79% |
| /airlines/airtran.html | | |
| Jun 1, 2009 - Jun 30, 2009 | 2,416 | 3.43% |
| Jun 1, 2008 - Jun 30, 2008 | 0 | 0.00% |
| % Change | 100.00% | 100.00% |





16,125 people visited this site


 **21,294 Visits**
Previous: 16,404 (29.81%)


 **16,125 Absolute Unique Visitors**
Previous: 12,160 (32.61%)

 **70,404 Pageviews**
Previous: 63,914 (10.15%)

 **3.31 Average Pageviews**
Previous: 3.90 (-15.14%)

 **00:03:32 Time on Site**
Previous: 00:06:55 (-48.97%)

 **42.01% Bounce Rate**
Previous: 35.35% (18.83%)

 **67.29% New Visits**
Previous: 67.02% (0.40%)

Technical Profile

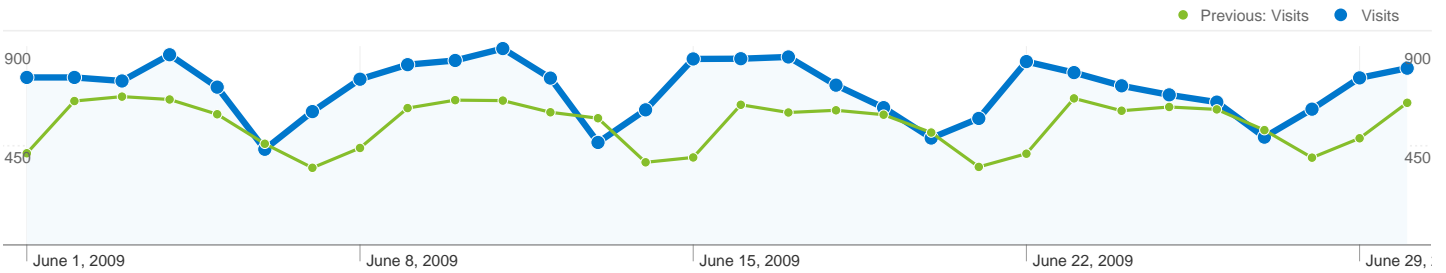
| Browser | Visits | % visits | Connection Speed | Visits | % visits |
|----------------------------|--------|----------|----------------------------|--------|----------|
| Internet Explorer | | | Cable | | |
| Jun 1, 2009 - Jun 30, 2009 | 14,493 | 68.06% | Jun 1, 2009 - Jun 30, 2009 | 7,550 | 35.46% |
| Jun 1, 2008 - Jun 30, 2008 | 12,388 | 75.52% | Jun 1, 2008 - Jun 30, 2008 | 5,871 | 35.79% |
| % Change | 16.99% | -9.87% | % Change | 28.60% | -0.93% |
| Firefox | | | Unknown | | |
| Jun 1, 2009 - Jun 30, 2009 | 4,366 | 20.50% | Jun 1, 2009 - Jun 30, 2009 | 5,911 | 27.76% |
| Jun 1, 2008 - Jun 30, 2008 | 2,941 | 17.93% | Jun 1, 2008 - Jun 30, 2008 | 3,843 | 23.43% |
| % Change | 48.45% | 14.36% | % Change | 53.81% | 18.49% |

| Safari | | |
|----------------------------|------------|-----------|
| Jun 1, 2009 - Jun 30, 2009 | 1,911 | 8.97% |
| Jun 1, 2008 - Jun 30, 2008 | 890 | 5.43% |
| % Change | 114.72% | 65.41% |
| Chrome | | |
| Jun 1, 2009 - Jun 30, 2009 | 268 | 1.26% |
| Jun 1, 2008 - Jun 30, 2008 | 0 | 0.00% |
| % Change | 100.00% | 100.00% |
| Mozilla Compatible Agent | | |
| Jun 1, 2009 - Jun 30, 2009 | 106 | 0.50% |
| Jun 1, 2008 - Jun 30, 2008 | 1 | 0.01% |
| % Change | 10,500.00% | 8,065.79% |

| DSL | | |
|----------------------------|---------|---------|
| Jun 1, 2009 - Jun 30, 2009 | 5,365 | 25.19% |
| Jun 1, 2008 - Jun 30, 2008 | 4,191 | 25.55% |
| % Change | 28.01% | -1.38% |
| T1 | | |
| Jun 1, 2009 - Jun 30, 2009 | 1,705 | 8.01% |
| Jun 1, 2008 - Jun 30, 2008 | 1,457 | 8.88% |
| % Change | 17.02% | -9.85% |
| Dialup | | |
| Jun 1, 2009 - Jun 30, 2009 | 515 | 2.42% |
| Jun 1, 2008 - Jun 30, 2008 | 768 | 4.68% |
| % Change | -32.94% | -48.34% |

Traffic Sources Overview

Jun 1, 2009 - Jun 30, 2009
Comparing to: Jun 1, 2008 - Jun 30, 2008



All traffic sources sent a total of 21,294 visits

24.65% Direct Traffic

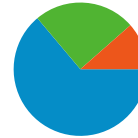
Previous: 22.22% (10.94%)

11.47% Referring Sites

Previous: 12.60% (-8.95%)

63.87% Search Engines

Previous: 65.16% (-1.98%)



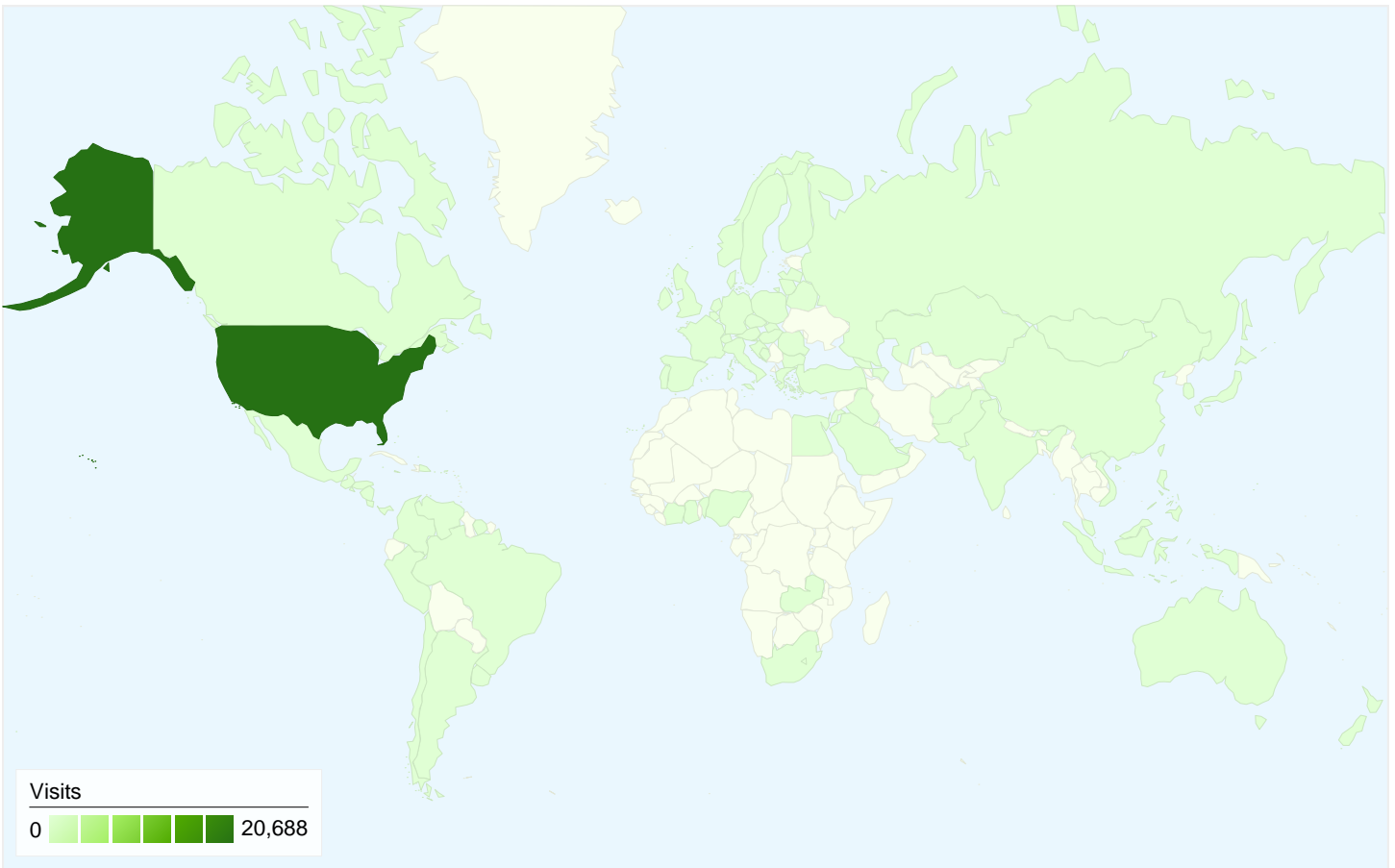
- Search Engines
13,600.00 (63.87%)
- Direct Traffic
5,249.00 (24.65%)
- Referring Sites
2,443.00 (11.47%)
- Other
2 (0.01%)

Top Traffic Sources

| Sources | Visits | % visits |
|----------------------------|---------|----------|
| google (organic) | | |
| Jun 1, 2009 - Jun 30, 2009 | 10,861 | 51.00% |
| Jun 1, 2008 - Jun 30, 2008 | 8,417 | 51.31% |
| % Change | 29.04% | -0.60% |
| (direct) ((none)) | | |
| Jun 1, 2009 - Jun 30, 2009 | 5,249 | 24.65% |
| Jun 1, 2008 - Jun 30, 2008 | 3,645 | 22.22% |
| % Change | 44.01% | 10.94% |
| yahoo (organic) | | |
| Jun 1, 2009 - Jun 30, 2009 | 1,555 | 7.30% |
| Jun 1, 2008 - Jun 30, 2008 | 1,132 | 6.90% |
| % Change | 37.37% | 5.82% |
| bing (organic) | | |
| Jun 1, 2009 - Jun 30, 2009 | 615 | 2.89% |
| Jun 1, 2008 - Jun 30, 2008 | 0 | 0.00% |
| % Change | 100.00% | 100.00% |
| aol (organic) | | |

| Keywords | Visits | % visits |
|----------------------------|--------|----------|
| asheville airport | | |
| Jun 1, 2009 - Jun 30, 2009 | 4,813 | 35.39% |
| Jun 1, 2008 - Jun 30, 2008 | 3,440 | 32.18% |
| % Change | 39.91% | 9.97% |
| asheville regional airport | | |
| Jun 1, 2009 - Jun 30, 2009 | 1,250 | 9.19% |
| Jun 1, 2008 - Jun 30, 2008 | 1,028 | 9.62% |
| % Change | 21.60% | -4.43% |
| asheville nc airport | | |
| Jun 1, 2009 - Jun 30, 2009 | 1,216 | 8.94% |
| Jun 1, 2008 - Jun 30, 2008 | 718 | 6.72% |
| % Change | 69.36% | 33.11% |
| avl airport | | |
| Jun 1, 2009 - Jun 30, 2009 | 477 | 3.51% |
| Jun 1, 2008 - Jun 30, 2008 | 317 | 2.97% |
| % Change | 50.47% | 18.27% |
| avl | | |

| | | | | | |
|----------------------------|--------|--------|----------------------------|--------|--------|
| Jun 1, 2009 - Jun 30, 2009 | 366 | 1.72% | Jun 1, 2009 - Jun 30, 2009 | 476 | 3.50% |
| Jun 1, 2008 - Jun 30, 2008 | 303 | 1.85% | Jun 1, 2008 - Jun 30, 2008 | 403 | 3.77% |
| % Change | 20.79% | -6.95% | % Change | 18.11% | -7.17% |



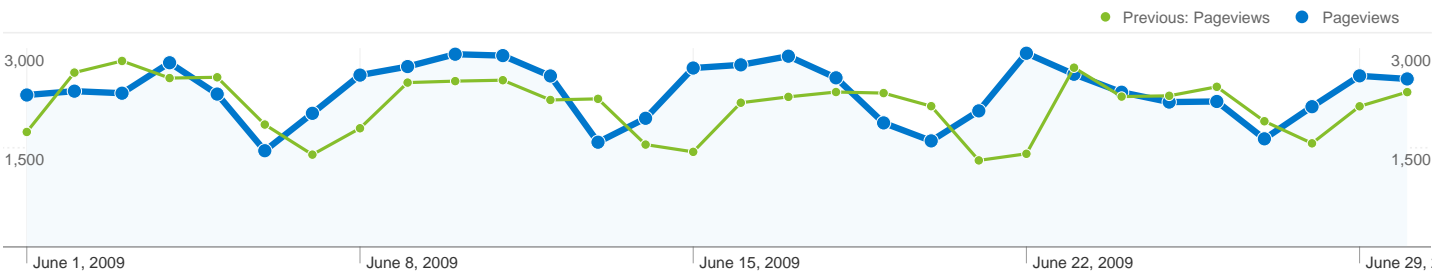
21,294 visits came from 100 countries/territories

Site Usage


| Visits | Pages/Visit | Avg. Time on Site | % New Visits | Bounce Rate | |
|--|---|---|---|--|---------------|
| 21,294 Previous: 16,404 (29.81%) | 3.31 Previous: 3.90 (-15.14%) | 00:03:32 Previous: 00:06:55 (-48.97%) | 67.33% Previous: 67.23% (0.15%) | 42.01% Previous: 35.35% (18.83%) | |
| Country/Territory | Visits | Pages/Visit | Avg. Time on Site | % New Visits | Bounce Rate |
| United States | | | | | |
| June 1, 2009 - June 30, 2009 | 20,688 | 3.32 | 00:03:34 | 67.04% | 41.79% |
| June 1, 2008 - June 30, 2008 | 15,801 | 3.93 | 00:07:04 | 67.00% | 34.93% |
| % Change | 30.93% | -15.50% | -49.48% | 0.06% | 19.62% |
| Canada | | | | | |
| June 1, 2009 - June 30, 2009 | 144 | 3.10 | 00:01:55 | 81.25% | 44.44% |
| June 1, 2008 - June 30, 2008 | 91 | 3.70 | 00:02:22 | 84.62% | 41.76% |
| % Change | 58.24% | -16.18% | -18.73% | -3.98% | 6.43% |
| United Kingdom | | | | | |
| June 1, 2009 - June 30, 2009 | 95 | 4.09 | 00:03:01 | 68.42% | 42.11% |


| | | | | | |
|------------------------------|---------|---------|----------|---------|---------|
| June 1, 2008 - June 30, 2008 | 119 | 3.38 | 00:02:40 | 69.75% | 35.29% |
| % Change | -20.17% | 21.21% | 13.06% | -1.90% | 19.30% |
| India | | | | | |
| June 1, 2009 - June 30, 2009 | 46 | 1.43 | 00:00:11 | 71.74% | 80.43% |
| June 1, 2008 - June 30, 2008 | 25 | 1.68 | 00:01:26 | 84.00% | 56.00% |
| % Change | 84.00% | -14.60% | -86.75% | -14.60% | 43.63% |
| Germany | | | | | |
| June 1, 2009 - June 30, 2009 | 37 | 2.73 | 00:02:08 | 94.59% | 43.24% |
| June 1, 2008 - June 30, 2008 | 34 | 4.41 | 00:03:02 | 88.24% | 35.29% |
| % Change | 8.82% | -38.13% | -29.60% | 7.21% | 22.52% |
| Brazil | | | | | |
| June 1, 2009 - June 30, 2009 | 17 | 1.29 | 00:01:21 | 29.41% | 88.24% |
| June 1, 2008 - June 30, 2008 | 9 | 1.89 | 00:01:44 | 88.89% | 66.67% |
| % Change | 88.89% | -31.49% | -22.49% | -66.91% | 32.35% |
| France | | | | | |
| June 1, 2009 - June 30, 2009 | 14 | 2.21 | 00:02:16 | 100.00% | 71.43% |
| June 1, 2008 - June 30, 2008 | 11 | 1.45 | 00:00:18 | 72.73% | 72.73% |
| % Change | 27.27% | 52.23% | 672.69% | 37.50% | -1.79% |
| Italy | | | | | |
| June 1, 2009 - June 30, 2009 | 13 | 3.08 | 00:02:28 | 69.23% | 38.46% |
| June 1, 2008 - June 30, 2008 | 9 | 3.22 | 00:00:55 | 88.89% | 44.44% |
| % Change | 44.44% | -4.51% | 167.17% | -22.12% | -13.46% |
| Spain | | | | | |
| June 1, 2009 - June 30, 2009 | 13 | 3.00 | 00:03:14 | 69.23% | 38.46% |
| June 1, 2008 - June 30, 2008 | 8 | 1.88 | 00:00:26 | 87.50% | 62.50% |
| % Change | 62.50% | 60.00% | 634.96% | -20.88% | -38.46% |
| Australia | | | | | |
| June 1, 2009 - June 30, 2009 | 13 | 3.08 | 00:01:40 | 76.92% | 46.15% |
| June 1, 2008 - June 30, 2008 | 18 | 2.28 | 00:01:56 | 88.89% | 61.11% |
| % Change | -27.78% | 35.08% | -13.91% | -13.46% | -24.48% |


1 - 10 of 100



Pages on this site were viewed a total of 70,404 times

 **70,404 Pageviews**
Previous: 63,914 (10.15%)

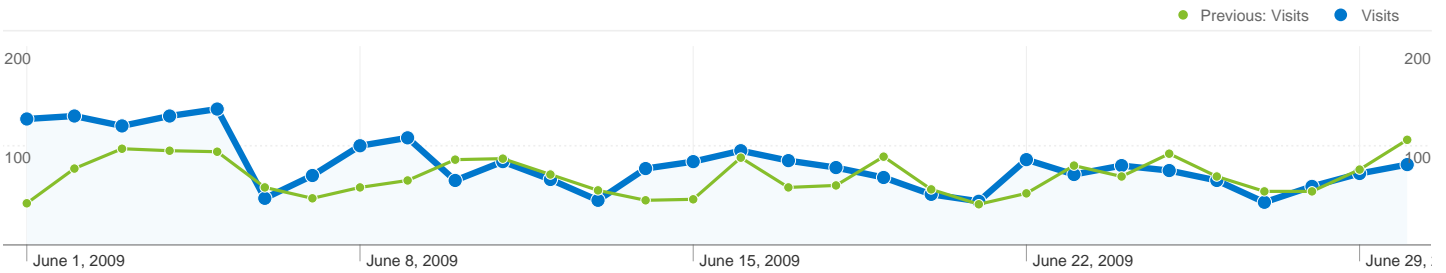
 **49,518 Unique Views**
Previous: 41,638 (18.93%)

 **42.01% Bounce Rate**
Previous: 35.35% (18.83%)

Top Content

| Pages | Pageviews | % Pageviews |
|---------------------------------------|-----------|-------------|
| / | | |
| Jun 1, 2009 - Jun 30, 2009 | 19,650 | 27.91% |
| Jun 1, 2008 - Jun 30, 2008 | 19,024 | 29.76% |
| % Change | 3.29% | -6.23% |
| /flights/flight-view---real-time.html | | |
| Jun 1, 2009 - Jun 30, 2009 | 6,754 | 9.59% |
| Jun 1, 2008 - Jun 30, 2008 | 8,210 | 12.85% |
| % Change | -17.73% | -25.32% |
| /flights/arrivals---real-time.html | | |
| Jun 1, 2009 - Jun 30, 2009 | 3,543 | 5.03% |
| Jun 1, 2008 - Jun 30, 2008 | 2,869 | 4.49% |
| % Change | 23.49% | 12.11% |
| /flights/flight-schedule-search.html | | |
| Jun 1, 2009 - Jun 30, 2009 | 2,871 | 4.08% |
| Jun 1, 2008 - Jun 30, 2008 | 1,621 | 2.54% |
| % Change | 77.11% | 60.79% |
| /airlines/airtran.html | | |

| | | |
|----------------------------|---------|---------|
| Jun 1, 2009 - Jun 30, 2009 | 2,416 | 3.43% |
| Jun 1, 2008 - Jun 30, 2008 | 0 | 0.00% |
| % Change | 100.00% | 100.00% |



Referring sites sent 2,443 visits via 541 sources

Site Usage

| Visits | Pages/Visit | Avg. Time on Site | % New Visits | Bounce Rate | |
|--|---|---|--|--|-------------|
| 2,443 Previous: 2,067 (18.19%) | 2.77 Previous: 3.20 (-13.33%) | 00:01:47 Previous: 00:02:09 (-16.92%) | 74.38% Previous: 79.83% (-6.83%) | 54.85% Previous: 47.70% (14.99%) | |
| Source | Visits | Pages/Visit | Avg. Time on Site | % New Visits | Bounce Rate |
| bing.com | | | | | |
| June 1, 2009 - June 30, 2009 | 222 | 3.37 | 00:02:15 | 79.28% | 40.99% |
| June 1, 2008 - June 30, 2008 | 0 | 0.00 | 00:00:00 | 0.00% | 0.00% |
| % Change | 100.00% | 100.00% | 100.00% | 100.00% | 100.00% |
| biltmore.com | | | | | |
| June 1, 2009 - June 30, 2009 | 102 | 1.79 | 00:00:56 | 94.12% | 75.49% |
| June 1, 2008 - June 30, 2008 | 114 | 2.11 | 00:01:51 | 93.86% | 64.91% |
| % Change | -10.53% | -15.13% | -49.88% | 0.27% | 16.30% |
| willowwinds.com | | | | | |
| June 1, 2009 - June 30, 2009 | 81 | 2.35 | 00:01:03 | 83.95% | 53.09% |
| June 1, 2008 - June 30, 2008 | 81 | 1.89 | 00:00:48 | 93.83% | 58.02% |
| % Change | 0.00% | 24.18% | 30.61% | -10.53% | -8.51% |
| google.com | | | | | |
| June 1, 2009 - June 30, 2009 | 73 | 2.18 | 00:01:07 | 64.38% | 61.64% |
| June 1, 2008 - June 30, 2008 | 47 | 4.28 | 00:03:09 | 42.55% | 29.79% |
| % Change | 55.32% | -49.07% | -64.39% | 51.30% | 106.95% |
| en.wikipedia.org | | | | | |
| June 1, 2009 - June 30, 2009 | 69 | 4.68 | 00:02:31 | 91.30% | 24.64% |
| June 1, 2008 - June 30, 2008 | 57 | 6.89 | 00:03:52 | 80.70% | 17.54% |
| % Change | 21.05% | -32.11% | -34.89% | 13.14% | 40.43% |
| foxcarolina.com | | | | | |
| June 1, 2009 - June 30, 2009 | 69 | 1.28 | 00:00:18 | 97.10% | 85.51% |

| | | | | | |
|------------------------------|---------|---------|----------|---------|---------------|
| June 1, 2008 - June 30, 2008 | 0 | 0.00 | 00:00:00 | 0.00% | 0.00% |
| % Change | 100.00% | 100.00% | 100.00% | 100.00% | 100.00% |
| my.att.net | | | | | |
| June 1, 2009 - June 30, 2009 | 65 | 4.08 | 00:03:11 | 66.15% | 33.85% |
| June 1, 2008 - June 30, 2008 | 104 | 4.58 | 00:02:49 | 66.35% | 18.27% |
| % Change | -37.50% | -10.92% | 13.30% | -0.29% | 85.26% |
| groveparkinn.com | | | | | |
| June 1, 2009 - June 30, 2009 | 57 | 2.19 | 00:01:52 | 87.72% | 57.89% |
| June 1, 2008 - June 30, 2008 | 76 | 2.97 | 00:01:28 | 82.89% | 52.63% |
| % Change | -25.00% | -26.25% | 27.48% | 5.82% | 10.00% |
| flyavl.com | | | | | |
| June 1, 2009 - June 30, 2009 | 55 | 4.29 | 00:04:05 | 3.64% | 25.45% |
| June 1, 2008 - June 30, 2008 | 28 | 3.11 | 00:02:51 | 3.57% | 57.14% |
| % Change | 96.43% | 38.10% | 42.82% | 1.82% | -55.45% |
| charter.net | | | | | |
| June 1, 2009 - June 30, 2009 | 54 | 3.61 | 00:03:07 | 55.56% | 31.48% |
| June 1, 2008 - June 30, 2008 | 45 | 5.02 | 00:05:31 | 51.11% | 13.33% |
| % Change | 20.00% | -28.10% | -43.29% | 8.70% | 136.11% |
| | | | | | 1 - 10 of 541 |

Asheville Regional Airport Authority
Project Report - July 2009

| Project Number | Project Name | Project Description | Professional Services Consultant | Professional Services Contract | General Contractor | Original Construction Contract | Change Orders (thru 07/01/09) | Percent of Original Contract | Total Project Cost | Percent Complete | Expensed to Date (thru 07/01/09) | Start Date | End Date | Current Project Status (as of 07/01/09) |
|---------------------------|--|---|----------------------------------|--------------------------------|---------------------------------|--------------------------------|-------------------------------|------------------------------|--------------------|------------------|----------------------------------|------------|----------|--|
| Planning Phase | | | | | | | | | | | | | | |
| 1 | GA - Apron & TW Connector Project | The North GA Apron and TW Connector Project includes the design of 3 separate apron expansion areas and the addition of a new TW connector located North of TW D2. | AVCON | \$188,000.00 | Young and McQueen | \$1,541,185.00 | na | na | \$1,729,185.00 | 100% | \$169,675.00 | na | na | The project was bid on June 9 and the Authority Board approved awarding the contract to Young and McQueen Grading Company contingent on final funding secured from the FAA. Staff is currently working with the FAA ADO on funding. |
| Design Phase | | | | | | | | | | | | | | |
| None | | | | | | | | | | | | | | |
| Construction Phase | | | | | | | | | | | | | | |
| 2 | A Gates - Terminal Renovation & Improvements Project | Renovation & Improvements to the A Gates hold room area. | RS&H | \$949,990.00 | Shelco Inc. | \$7,849,000.00 | na | na | \$9,739,396.00 | 0% | \$854,991.00 | July '09 | Feb-10 | The Authority Board approved the award of a contract to Shelco, Inc. Contract documents are being executed and pre-construction activities are being coordinated. NTP is scheduled for July 15, 2009. |
| 2a | | 2 Passenger Boarding Bridges | RS&H | (included above) | ThyssenKrupp Airport Systems | \$940,406.00 | na | na | (included above) | 0% | \$0.00 | Jul-09 | Feb-10 | The Authority Board approved the award of a contract to ThyssenKrupp Airport Systems. Contract documents are being executed and pre-construction activities are being coordinated. NTP is scheduled for July 15, 2009. |
| 3 | Landside Parking and Roadway Access Project | The Landside Parking and Roadway Access Project includes 3 components of work: public parking lots, terminal access roadway, general aviation access roadway, and expansion of the toll plaza facility. | LPA Group | \$729,044.00 | (see below) | na | na | na | \$4,539,898.45 | 50% | \$607,789.48 | Jul-09 | Dec-09 | The Authority Board approved the award of all contracts related to the Landside Roadway and Parking Improvements Project. Contract documents are being executed and pre-construction activities are being coordinated. NTP is scheduled for July 20, 2009. |
| 3A | | Parking Lot and Terminal Drive | LPA Group | (included above) | APAC | \$1,614,092.45 | na | na | (included above) | 0% | \$0.00 | Jul-09 | Jan-10 | The Authority Board approved the award of a contract to APAC. Contract documents are being executed and pre-construction activities are being coordinated. NTP is scheduled for July 20,2009. |
| 3B | | Toll Plaza Expansion | LPA Group | (included above) | Patton Construction | \$495,840.00 | na | na | (included above) | 0% | \$0.00 | Jul-09 | Feb-10 | The Authority Board approved the award of a contract to Patton Construction Group. Contract documents are being executed and pre-construction activities are being coordinated. NTP is scheduled for July 20,2009. |
| 3C | | Wright Brothers Way Improvements Project | LPA Group | (included above) | Moore and Sons Construction Co. | \$1,700,922.00 | na | na | (included above) | 0% | \$0.00 | Jul-09 | Mar-10 | The Authority Board approved the award of a contract to Moore and Sons Construction Co. Contract documents are being executed and pre-construction activities are being coordinated. NTP is scheduled for July 20,2009. |

Asheville Regional Airport Authority
Project Report - July 2009

| Project Number | Project Name | Project Description | Professional Services Consultant | Professional Services Contract | General Contractor | Original Construction Contract | Change Orders (thru 07/01/09) | Percent of Original Contract | Total Project Cost | Percent Complete | Expensed to Date (thru 07/01/09) | Start Date | End Date | Current Project Status (as of 07/01/09) |
|------------------------|--|--|----------------------------------|--------------------------------|-------------------------------------|--------------------------------|-------------------------------|------------------------------|--------------------|------------------|----------------------------------|------------|-------------|---|
| 4 | North General Aviation Expansion Project | The North GA project includes multiple phases; phase one consisted of tree harvesting and logging operations, phase two included clearing and grubbing of the site and phase three involves the placement and compaction of structural fill material for the site. | AVCON | \$99,100.00 | Charah | \$352,690.50 | \$25,494.00 | 7.23% | \$3,700,000.00 | 70% | \$ 2,473,293.33 | Nov-07 | Spring 2010 | The Second phase of fill placement is underway. |
| 5 | Triturator Facility | Construction and installation of a dump site to support airline waste disposal and a facility to protect staff from weather elements. | RS&H | \$48,147.00 | Perry Bartsch Jr. | \$198,800.00 | na | na | \$31,859.11 | 10% | \$215,087.89 | Jul-09 | Dec-09 | The Authority Board approved the award of a contract to Perry Bartsch Jr. Construction Co. Contract documents are being executed and pre-construction activities are being coordinated. |
| 6 | Pre-Conditioned Air and Fixed Ground Power | Pre-Conditioned Air and Fixed Ground Power will be added to all boarding bridges for customer comfort and functionality | RS&H | \$8,000.00 | Inet Airport System Inc. | \$502,800.00 | na | na | \$7,402.71 | 10% | \$503,397.29 | Jul-09 | | The Authority Board approved the award of a contract to INET Airport Systems. Contract documents are being executed and pre-construction activities are being coordinated. |
| Close-Out Phase | | | | | | | | | | | | | | |
| 7 | 22,000 Sq Ft Bulk Hangar - 168 Wright Brothers Way | A 22,000 sq ft bulk hangar will be constructed on existing ramp area adjacent to the Lacy Griffin Building. The hangar will be under a management agreement with Million Air. | LPA Group | \$265,535.00 | Momentum Construction Services, LLC | \$1,928,000.00 | -\$23,973.22 | -2.43% | \$2,169,561.78 | 95% | \$1,809,421.83 | Oct-08 | Jun-09 | The project is substantially complete. The contractor is working on punchlist items and closeout documentation. |
| 8 | Terminal Renovation and Expansion - Phase 1 | The Terminal Renovation and Expansion - Phase 1 Project includes enlarging the baggage claim area and airline ticket office areas . Improvements and modifications include additional square footage and increased baggage capacity. | SchenkelShultz | \$644,242.82 | Perry Bartsch Jr. | \$ 4,479,000.00 | \$1,020,513.61 | 21.08% | \$6,186,863.86 | 99% | \$ 6,365,330.57 | Jul-06 | Jun-09 | Punchlist work is underway. The contractor is also working on close out documentation. |
| 9 | Security System & Access Control Project | The Security System & Access Control Project includes the design and professional services for replacing and improving the current ACS and CCTV systems. | Faith Group | \$185,870.00 | I-Sys | \$ 1,473,984.00 | \$184,151.21 | 12.50% | \$2,098,815.21 | 99% | \$ 1,838,688.97 | Jul-06 | Jun-09 | The security project contractor is working on punchlist items and closeout documentation. |