



MEMORANDUM

TO: Members of the Airport Authority

FROM: Lew Bleiweis, A.A.E., Airport Director

DATE: September, 2009

Informational Reports:

- A. July, 2009 Traffic Report ([document](#))
- B. July, 2009 Monthly Financial Report ([document](#))
- C. September, 2009 Marketing and Public Relations Report ([document](#))
- D. September, 2009 Development/Project Status Report ([document](#))



MEMORANDUM

TO: Members of the Airport Authority
FROM: Lew Bleiweis, A.A.E., Airport Director
DATE: September, 2009

ITEM DESCRIPTION – Information Section Item A

July, 2009 Traffic Report – Asheville Regional Airport

SUMMARY

July 2009 overall passenger traffic numbers were up 9.1%. Passenger traffic numbers reflect a 10.3% increase in passenger enplanements from July 2008.

AIRLINE PERFORMANCE

Delta Airlines: Delta's July 2009 enplanements increased by 39.3% compared to July 2008. There were seven (7) flight cancellations for the month.

Continental Airlines: Continental's July 2009 passenger enplanements decreased by 41.7% compared to July 2008. There were three (3) flight cancellations for the month.

Northwest Airlines: Year over Year passenger enplanements for Northwest in July 2009 were down 70.6%. There was one (1) flight cancellation for the month.

US Airways: US Airways' July 2009 passenger enplanements represent a 32.7% increase. There was one (1) flight cancellation for the month.

Monthly Traffic Report

Asheville Regional Airport

July 2009



Category	Jul 2009	Jul 2008	Percentage Change	*CYTD-2009	*CYTD-2008	Percentage Change	*MOV12-2009	*MOV12-2008	Percentage Change
Passenger Traffic									
Enplaned	29,336	26,587	10.3%	164,243	152,032	8.0%	291,690	280,180	4.1%
Deplaned	<u>29,046</u>	<u>26,938</u>	7.8%	<u>163,069</u>	<u>152,966</u>	6.6%	<u>288,551</u>	<u>277,334</u>	4.0%
Total	58,382	53,525	9.1%	327,312	304,998	7.3%	580,241	557,514	4.1%
Aircraft Operations									
Airlines	79	156	-49.4%	188	747	-74.8%	806	1,539	-47.6%
Commuter /Air Taxi	<u>1,638</u>	<u>2,017</u>	-18.8%	9,851	10,671	-7.7%	18,142	19,006	-4.5%
Subtotal	<u>1,717</u>	<u>2,173</u>	-21.0%	<u>10,039</u>	<u>11,418</u>	-12.1%	<u>18,948</u>	<u>20,545</u>	-7.8%
General Aviation	4,871	5,704	-14.6%	25,560	32,489	-21.3%	46,390	58,391	-20.6%
Military	<u>228</u>	<u>323</u>	-29.4%	<u>1,648</u>	<u>1,409</u>	17.0%	<u>3,133</u>	<u>2,551</u>	22.8%
Subtotal	<u>5,099</u>	<u>6,027</u>	-15.4%	<u>27,208</u>	<u>33,898</u>	-19.7%	<u>49,523</u>	<u>60,942</u>	-18.7%
Total	6,816	8,200	-16.9%	37,247	45,316	-17.8%	68,471	81,487	-16.0%
Fuel Gallons									
100LL	28,167	27,672	1.8%	121,582	137,703	-11.7%	217,732	262,234	-17.0%
Jet A (GA)	119,089	161,550	-26.3%	548,166	790,429	-30.6%	1,123,552	1,539,373	-27.0%
Subtotal	<u>147,256</u>	<u>189,222</u>	-22.2%	<u>669,748</u>	<u>928,132</u>	-27.8%	<u>1,341,284</u>	<u>1,801,607</u>	-25.6%
Jet A (A/L)	<u>208,491</u>	<u>289,661</u>	-28.0%	<u>1,395,889</u>	<u>1,604,504</u>	-13.0%	<u>2,679,769</u>	<u>2,825,438</u>	-5.2%
Total	355,747	478,883	-25.7%	2,065,637	2,532,636	-18.4%	4,021,053	4,627,045	-13.1%

*CYTD = Calendar Year to Date and *Mov12 = Moving Twelve Months.

Thursday, August 27, 2009

Airline Enplanements, Seats, and Load Factors Asheville Regional Airport

July 2009



	Jul 2009	Jul 2008	Percentage Change	*CYTD-2009	*CYTD-2008	Percentage Change
AirTran Airways						
Enplanements	1,438	0	#Div/0!	2,402	0	#Div/0!
Seats	1,521	0	#Div/0!	2,574	0	#Div/0!
Load Factor	94.5%	#Num!	#Error	93.3%	#Num!	#Error
Continental Airlines						
Enplanements	2,718	4,659	-41.7%	15,916	19,567	-18.7%
Seats	2,950	7,131	-58.6%	22,350	28,757	-22.3%
Load Factor	92.1%	65.3%	41.0%	71.2%	68.0%	4.7%
Delta Air Lines						
Enplanements	14,012	10,061	39.3%	73,548	57,933	27.0%
Seats	15,570	14,478	7.5%	94,650	79,718	18.7%
Load Factor	90.0%	69.5%	29.5%	77.7%	72.7%	6.9%
Northwest Airlines						
Enplanements	1,341	4,564	-70.6%	13,342	23,064	-42.2%
Seats	1,500	6,100	-75.4%	16,950	33,000	-48.6%
Load Factor	89.4%	74.8%	19.5%	78.7%	69.9%	12.6%
US Airways						
Enplanements	9,689	7,303	32.7%	58,655	51,468	14.0%
Seats	10,750	11,655	-7.8%	70,847	74,165	-4.5%
Load Factor	90.1%	62.7%	43.8%	82.8%	69.4%	19.3%

Monday, August 31, 2009

*CTYD = Calendar Year to Date and *Mov12 = Moving Twelve Months.

	Jul 2009	Jul 2008	Percentage Change	*CYTD-2009	*CYTD-2008	Percentage Change
Totals						
Enplanements	29,198	26,587	9.8%	163,863	152,032	7.8%
Seats	32,291	39,364	-18.0%	207,371	215,640	-3.8%
Load Factor	90.4%	67.5%	33.9%	79.0%	70.5%	12.1%

Monday, August 31, 2009

*CTYD = Calendar Year to Date and *Mov12 = Moving Twelve Months.

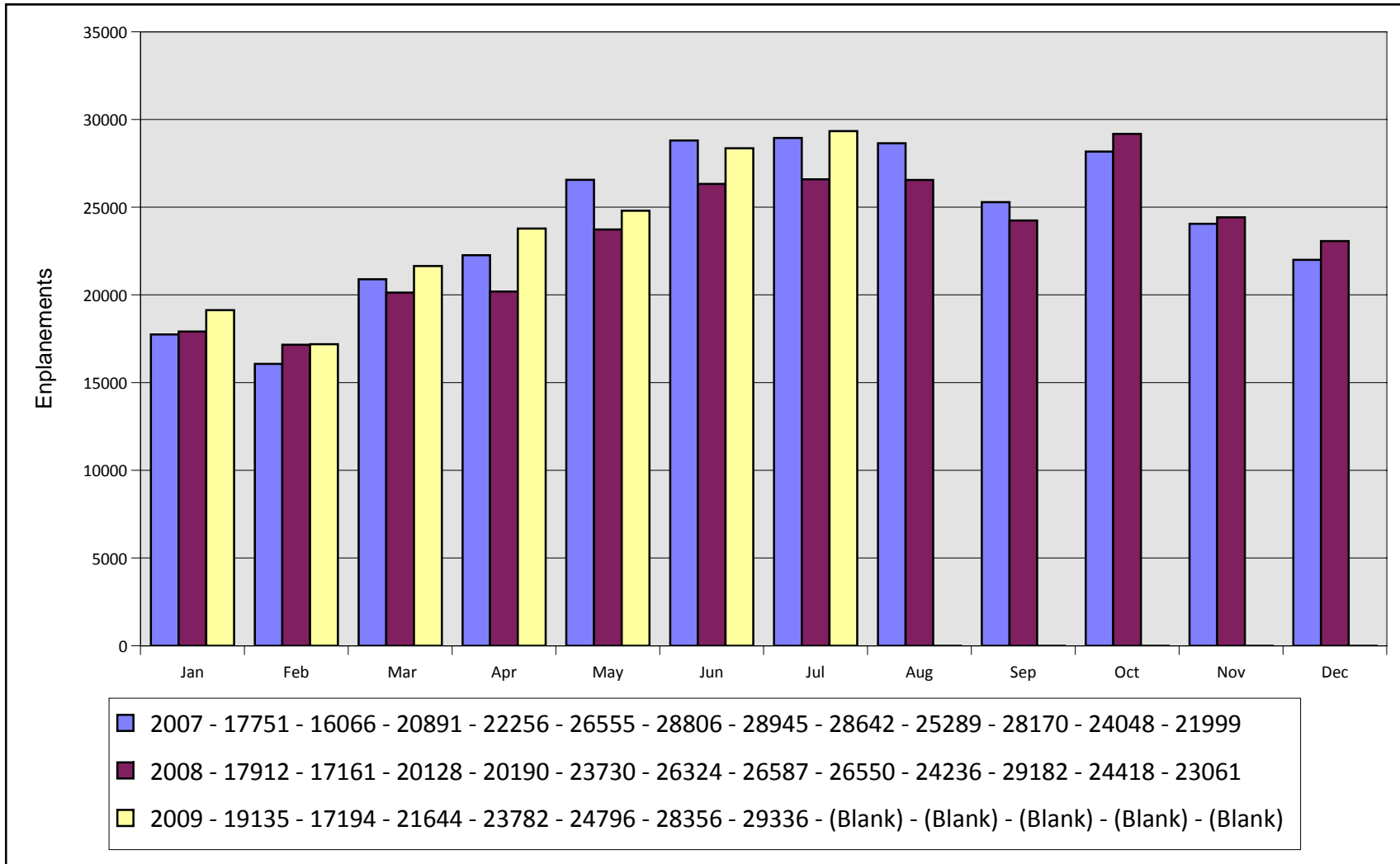
Airline Flight Completions Asheville Regional Airport July 2009



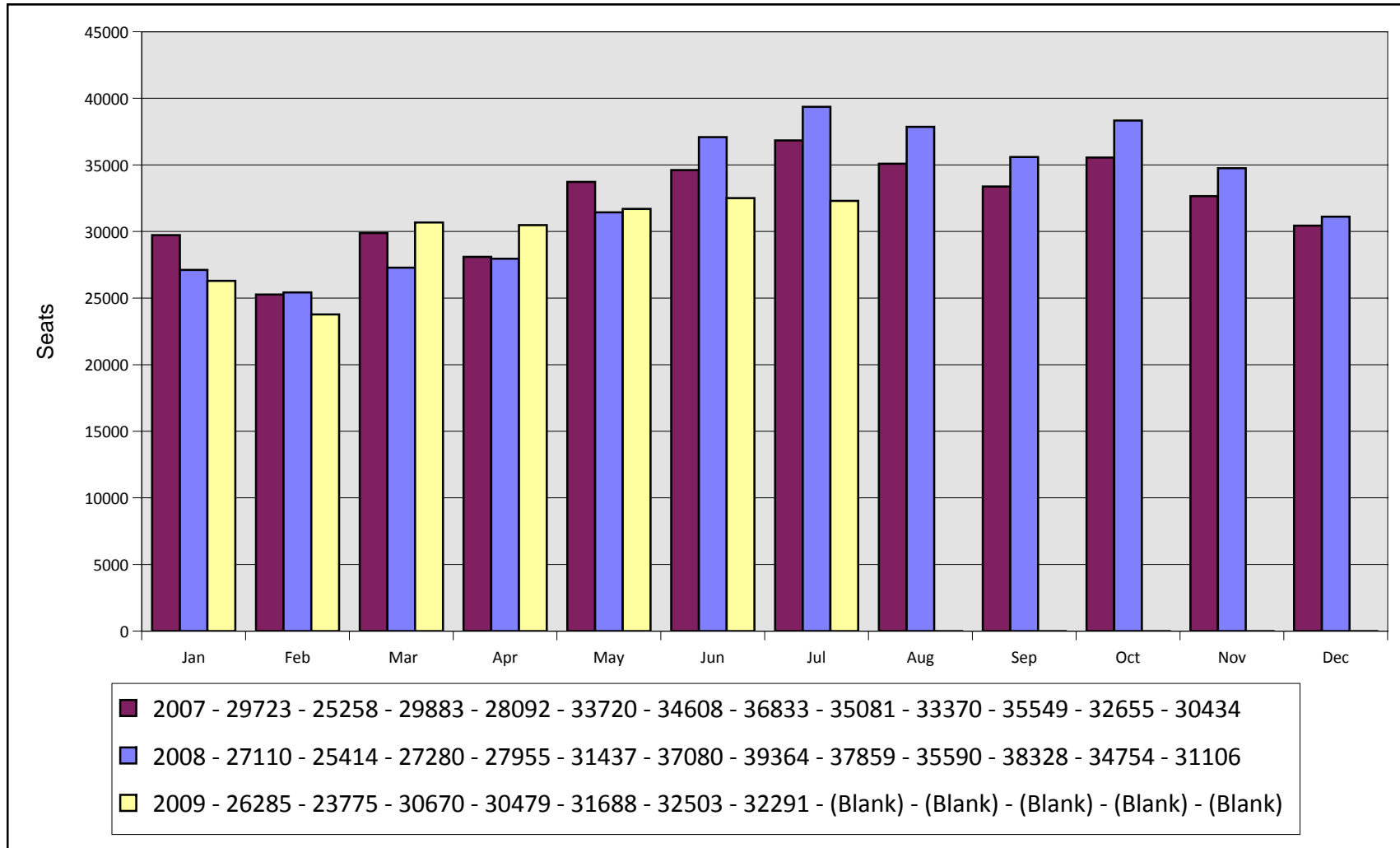
Airline	Scheduled Flights	Field	Cancellations Due To			Total Cancellations	Percentage of Completed
			Mechanical	Weather	Other		
AirTran Airways	13	0	0	0	0	0	107.7%
Continental Airlines	62	0	0	3	0	3	95.2%
Delta Air Lines	318	0	5	2	0	7	97.8%
Falcon Air Express	2	0	0	0	0	0	100.0%
Northwest Airlines	31	0	1	0	0	1	96.8%
US Airways	216	0	1	0	0	1	99.5%
Total	642	0	7	5	0	12	98.1%

Thursday, August 27, 2009

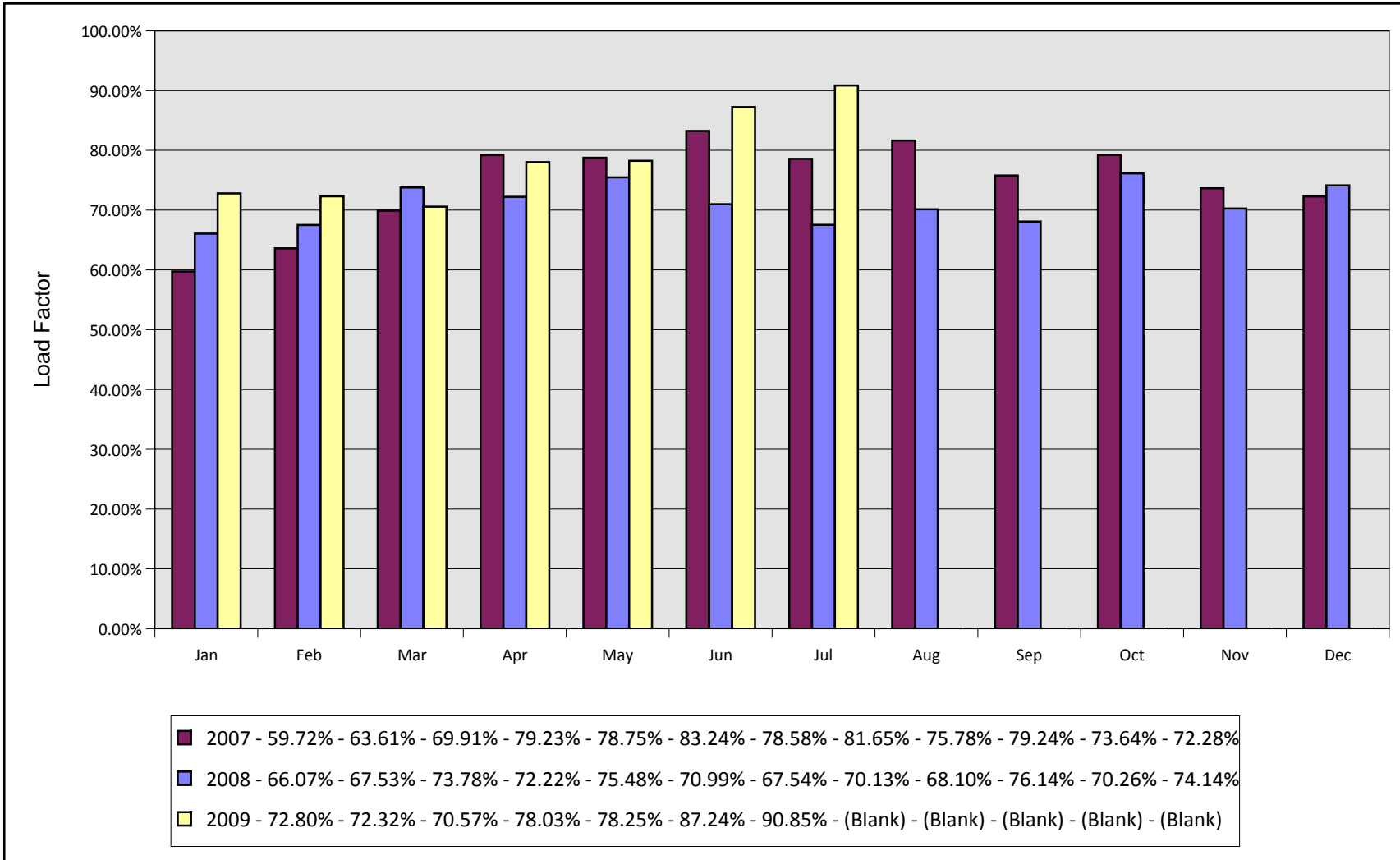
Monthly Enplanements By Year Asheville Regional Airport



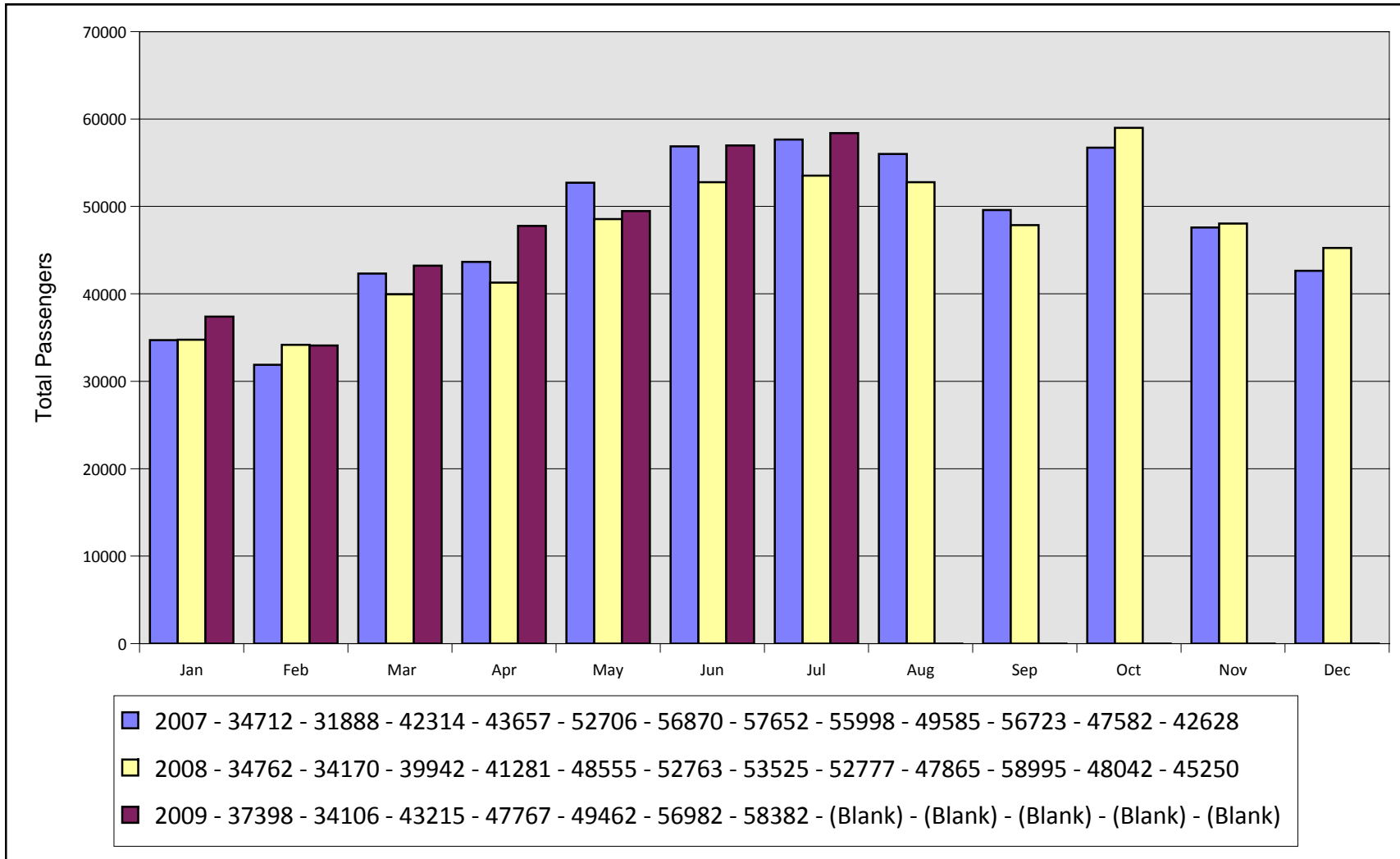
Monthly Seats By Year Asheville Regional Airport



Monthly Load Factors By Year Asheville Regional Airport

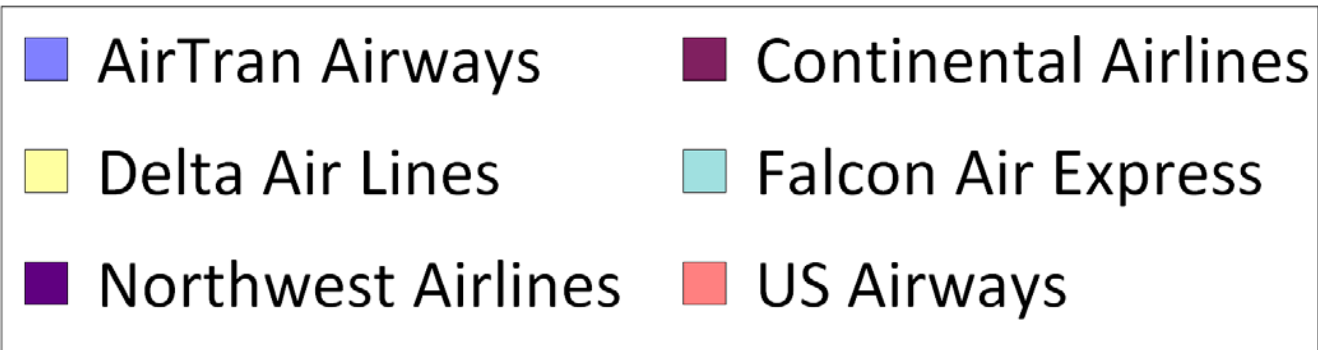
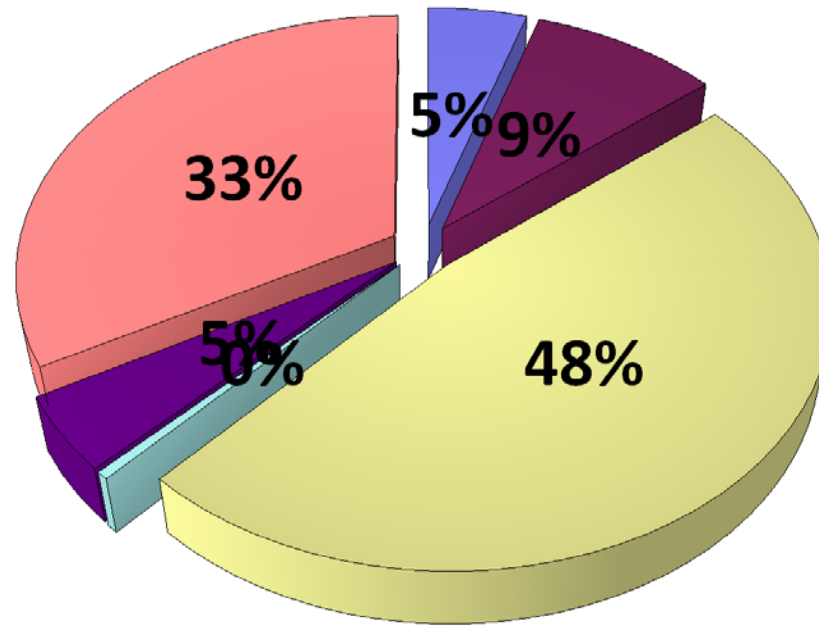


Total Monthly Passengers By Year Asheville Regional Airport

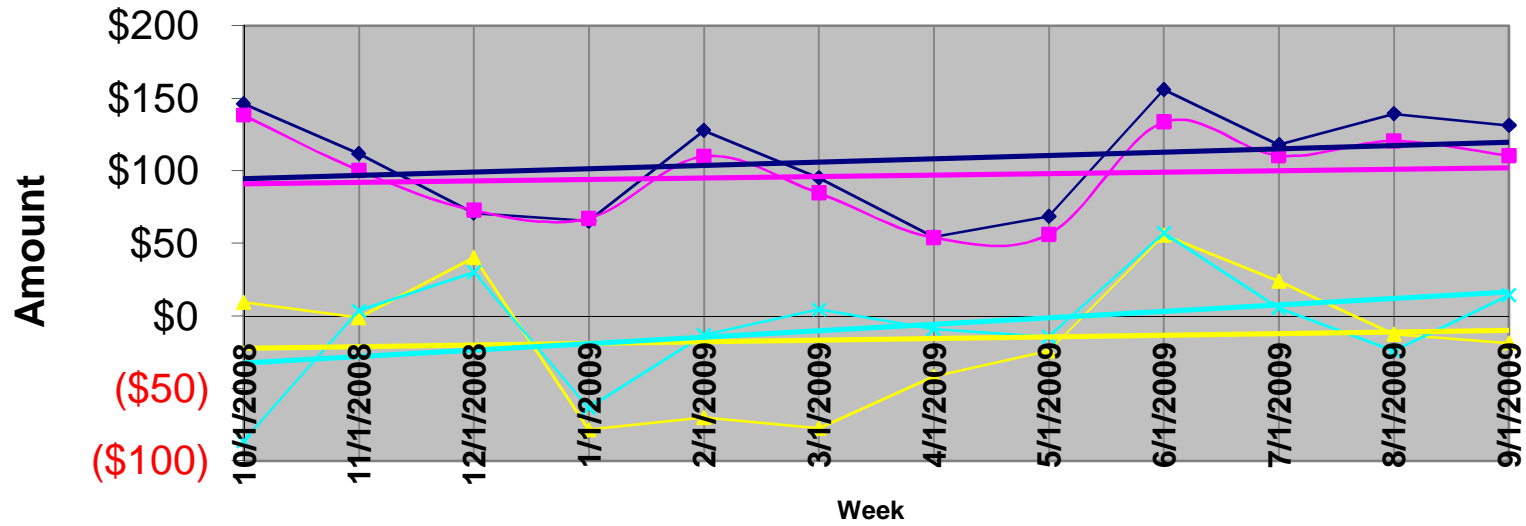


Airline Market Share Analysis (Enplanements) Asheville Regional Airport

Report Period From July 2009 Through July 2009



AVL Average Airfare Differences 21 Day Advance Purchase, 3 Day Stay



◆ ATL
 ■ CLT
 ▲ GSP
 ✕ TRI
 — Linear (ATL)
 — Linear (CLT)
 — Linear (GSP)
 — Linear (TRI)

Asheville Regional Airport
Sample airfares as of 08/31/09
21 Day Advance Purchase, 3 day Stay

		Difference in Fares								
		ASHEVILLE	ATLANTA	CHARLOTTE	GREENVILLE	TRI-CITIES	ATLANTA	CHARLOTTE	GREENVILLE	TRI-CITIES
ABQ	Albuquerque	\$504	\$298	\$253	\$330	\$516	\$206	\$251	\$174	(\$12)
ATL	Atlanta	\$303		\$197	\$280	\$297	\$303	\$106	\$23	\$6
AUS	Austin	\$351	\$317	\$181	\$392	\$357	\$34	\$170	(\$41)	(\$6)
BWI	Baltimore	\$271	\$231	\$167	\$470	\$357	\$40	\$104	(\$199)	(\$86)
BOS	Boston	\$268	\$280	\$227	\$432	\$333	(\$12)	\$41	(\$164)	(\$65)
ORD	Chicago	\$303	\$237	\$334	\$428	\$285	\$66	(\$31)	(\$125)	\$18
CVG	Cincinnati	\$268	\$238	\$411	\$283	\$301	\$30	(\$143)	(\$15)	(\$33)
CLE	Cleveland	\$296	\$261	\$347	\$272	\$248	\$35	(\$51)	\$24	\$48
DFW	Dallas	\$443	\$267	\$348	\$390	\$347	\$176	\$95	\$53	\$96
DEN	Denver	\$314	\$229	\$318	\$422	\$297	\$85	(\$4)	(\$108)	\$17
DTW	Detroit	\$347	\$238	\$314	\$302	\$355	\$109	\$33	\$45	(\$8)
FLL	Fort Lauderdale	\$323	\$185	\$177	\$487	\$287	\$138	\$146	(\$164)	\$36
RSW	Ft. Myers	\$528	\$217	\$308	\$388	\$293	\$311	\$220	\$140	\$235
BDL	Hartford	\$268	\$277	\$278	\$280	\$307	(\$9)	(\$10)	(\$12)	(\$39)
IAH	Houston	\$358	\$266	\$379	\$271	\$345	\$92	(\$21)	\$87	\$13
IND	Indianapolis	\$267	\$208	\$217	\$305	\$347	\$59	\$50	(\$38)	(\$80)
JAX	Jacksonville	\$447	\$187	\$269	\$467	\$291	\$260	\$178	(\$20)	\$156
MCI	Kansas City	\$363	\$290	\$321	\$460	\$369	\$73	\$42	(\$97)	(\$6)
LAS	Las Vegas	\$406	\$323	\$285	\$332	\$367	\$83	\$121	\$74	\$39
LAX	Los Angeles	\$419	\$348	\$234	\$492	\$398	\$71	\$185	(\$73)	\$21
MHT	Manchester	\$268	\$317	\$274	\$385	\$227	(\$49)	(\$6)	(\$117)	\$41
MEM	Memphis	\$477	\$214	\$378	\$298	\$502	\$263	\$99	\$179	(\$25)
MIA	Miami		\$200	\$254	\$478	\$293	(\$200)	(\$254)	(\$478)	(\$293)
MKE	Milwaukee	\$385	\$257	\$262	\$369	\$495	\$128	\$123	\$16	(\$110)
MSP	Minneapolis/Saint Paul	\$318	\$278	\$372	\$302	\$399	\$40	(\$54)	\$16	(\$81)
BNA	Nashville	\$541	\$323	\$421	\$437	\$416	\$218	\$120	\$104	\$125
MSY	New Orleans	\$335	\$217	\$227	\$375	\$471	\$118	\$108	(\$40)	(\$136)
LGA	New York	\$325	\$287	\$217	\$384	\$357	\$38	\$108	(\$59)	(\$32)
EWR	Newark	\$315	\$267	\$207	\$274	\$476	\$48	\$108	\$41	(\$161)
MCO	Orlando	\$215	\$157	\$169	\$372	\$341	\$58	\$46	(\$157)	(\$126)
PHL	Philadelphia	\$305	\$279	\$148	\$245	\$307	\$26	\$157	\$60	(\$2)
PHX	Phoenix	\$411	\$300	\$235	\$550	\$397	\$111	\$176	(\$139)	\$14
PIT	Pittsburgh	\$274	\$232	\$168	\$344	\$357	\$42	\$106	(\$70)	(\$83)
PDX	Portland	\$550		\$342	\$444	\$494	\$550	\$208	\$106	\$56
PVD	Providence	\$306	\$259	\$265	\$260	\$397	\$47	\$41	\$46	(\$91)
RDU	Raleigh/Durham	\$453	\$151	\$268	\$379	\$341	\$302	\$185	\$74	\$112
RIC	Richmond	\$464	\$211	\$198	\$430	\$413	\$253	\$266	\$34	\$51
STL	Saint Louis	\$441	\$218	\$215	\$367	\$281	\$223	\$226	\$74	\$160

SLC	Salt Lake City	\$557	\$269	\$234	\$272	\$465	\$288	\$323	\$285	\$92	
SAT	San Antonio	\$345	\$199	\$269	\$422	\$345	\$146	\$76	(\$77)	\$0	
SAN	San Diego	\$438	\$348	\$218	\$570	\$397	\$90	\$220	(\$132)	\$41	
SFO	San Francisco	\$492	\$383	\$235	\$475	\$365	\$109	\$257	\$17	\$127	
SRQ	Sarasota/Bradenton	\$528	\$228	\$301	\$372	\$293	\$300	\$227	\$156	\$235	
SEA	Seattle	\$483	\$239	\$302	\$567	\$373	\$244	\$181	(\$84)	\$110	
SYR	Syracuse	\$400	\$200	\$222	\$366	\$283	\$200	\$178	\$34	\$117	
TPA	Tampa	\$363	\$157	\$198	\$376	\$283	\$206	\$165	(\$13)	\$80	
YYZ	Toronto	\$535	\$362	\$339	\$513	\$528	\$173	\$196	\$22	\$7	
DCA	Washington DC	\$305	\$259	\$178	\$506	\$326	\$46	\$127	(\$201)	(\$21)	
IAD	Washington DC	\$305	\$204	\$178	\$506	\$326	\$101	\$127	(\$201)	(\$21)	
PBI	West Palm Beach	\$466	\$177	\$268	\$465	\$293	\$289	\$198	\$1	\$173	
							\$131	\$110	(\$19)	\$14	Average Fare difference

*These sample airfares were available 08/31/09, based on a 21-day advance purchase and a 3 day stay. Other restrictions may apply. To obtain the most up-to-date pricing information for your travel needs, please contact your travel agent or visit the following websites: www.airtran.com; www.continental.com; www.delta.com; www.nwa.com; www.usairways.com; www.travelocity.com; www.orbitz.com; or www.expedia.com. Airfares are subject to change without notice - and lower airfares are often not available on all dates. Please see our "special airfares" section on our web site for any last minute airfare specials. Sample airfares will be updated each Tuesday.

Blue highlighted numbers represent fare differentials in excess of \$35 for GSP, \$70 for CLT, \$100 for ATL, and \$35 for TRI.

Asheville Regional Airport
Sample airfares as of 08/31/09
0 Day Advance Purchase, 3 day Stay

		<u>Difference in Fares</u>									
		<u>ASHEVILLE</u>	<u>ATLANTA</u>	<u>CHARLOTTE</u>	<u>GREENVILLE</u>	<u>TRI-CITIES</u>	<u>ATLANTA</u>	<u>CHARLOTTE</u>	<u>GREENVILLE</u>	<u>TRI-CITIES</u>	
ABQ	Albuquerque	\$672		\$444	\$1,073	\$798	\$672	\$228	(\$401)	(\$126)	
ATL	Atlanta	\$453		\$322	\$442	\$447	\$453	\$131	\$11	\$6	
AUS	Austin	\$533	\$538	\$346	\$506	\$533	(\$5)	\$187	\$27	\$0	
BWI	Baltimore	\$437	\$393	\$204	\$982	\$447	\$44	\$233	(\$545)	(\$10)	
BOS	Boston	\$447	\$420	\$238	\$432	\$447	\$27	\$209	\$15	\$0	
ORD	Chicago	\$447	\$189	\$393	\$654	\$443	\$258	\$54	(\$207)	\$4	
CVG	Cincinnati	\$470	\$485	\$720	\$655	\$641	(\$15)	(\$250)	(\$185)	(\$171)	
CLE	Cleveland	\$714	\$420	\$598	\$452	\$715	\$294	\$116	\$262	(\$1)	
DFW	Dallas	\$710	\$351	\$471	\$698	\$501	\$359	\$239	\$12	\$209	
DEN	Denver	\$447	\$204	\$377	\$806	\$637	\$243	\$70	(\$359)	(\$190)	
DTW	Detroit	\$478	\$468	\$647	\$342	\$715	\$10	(\$169)	\$136	(\$237)	
FLL	Fort Lauderdale	\$447	\$232	\$312	\$681	\$447	\$215	\$135	(\$234)	\$0	
RSW	Ft. Myers		\$445	\$281	\$810	\$593	(\$445)	(\$281)	(\$810)	(\$593)	
BDL	Hartford	\$447	\$416	\$277	\$444	\$447	\$31	\$170	\$3	\$0	
IAH	Houston	\$575	\$319	\$615	\$611	\$743	\$256	(\$40)	(\$36)	(\$168)	
IND	Indianapolis	\$666	\$305	\$228	\$494	\$666	\$361	\$438	\$172	\$0	
JAX	Jacksonville	\$447	\$357	\$235	\$909	\$447	\$90	\$212	(\$462)	\$0	
MCI	Kansas City	\$447	\$209	\$305	\$642	\$447	\$238	\$142	(\$195)	\$0	
LAS	Las Vegas	\$532	\$549	\$361	\$528	\$532	(\$17)	\$171	\$4	\$0	
LAX	Los Angeles	\$945	\$543	\$348	\$829	\$532	\$402	\$597	\$116	\$413	
MHT	Manchester	\$447	\$437	\$480	\$670	\$447	\$10	(\$33)	(\$223)	\$0	
MEM	Memphis	\$828	\$333	\$562	\$338	\$822	\$495	\$266	\$490	\$6	
MIA	Miami	\$476	\$232	\$362	\$590	\$593	\$244	\$114	(\$114)	(\$117)	
MKE	Milwaukee	\$445	\$187	\$255	\$425	\$641	\$258	\$190	\$20	(\$196)	
MSP	Minneapolis/Saint Paul	\$591	\$209	\$335	\$641	\$630	\$382	\$256	(\$50)	(\$39)	
BNA	Nashville	\$760	\$485	\$656	\$759	\$763	\$275	\$104	\$1	(\$3)	
MSY	New Orleans	\$697	\$230	\$291	\$782	\$760	\$467	\$406	(\$85)	(\$63)	
LGA	New York	\$482	\$396	\$356	\$434	\$492	\$86	\$126	\$48	(\$10)	
EWR	Newark	\$455	\$526	\$457	\$1,045	\$970	(\$71)	(\$2)	(\$590)	(\$515)	
MCO	Orlando	\$167	\$317	\$253	\$842	\$593	(\$150)	(\$86)	(\$675)	(\$426)	
PHL	Philadelphia	\$387	\$538	\$347	\$445	\$447	(\$151)	\$40	(\$58)	(\$60)	
PHX	Phoenix	\$516	\$469	\$337	\$830	\$447	\$47	\$179	(\$314)	\$69	
PIT	Pittsburgh	\$447	\$518	\$348	\$384	\$441	(\$71)	\$99	\$63	\$6	
PDX	Portland	\$621	\$568	\$437	\$1,030	\$618	\$53	\$184	(\$409)	\$3	
PVD	Providence	\$447	\$432	\$431	\$442	\$447	\$15	\$16	\$5	\$0	
RDU	Raleigh/Durham	\$654	\$310	\$406	\$717	\$703	\$344	\$248	(\$63)	(\$49)	
RIC	Richmond	\$707	\$521	\$367	\$752	\$699	\$186	\$340	(\$45)	\$8	
STL	Saint Louis	\$711	\$287	\$246	\$759	\$574	\$424	\$465	(\$48)	\$137	

SLC	Salt Lake City	\$604			\$1,045	\$747	\$604	\$604	(\$441)	(\$143)
SAT	San Antonio	\$581	\$322	\$300	\$534	\$581	\$259	\$281	\$47	\$0
SAN	San Diego	\$729	\$526	\$458	\$1,041	\$769	\$203	\$271	(\$312)	(\$40)
SFO	San Francisco	\$602	\$493	\$373	\$769	\$531	\$109	\$229	(\$167)	\$71
SRQ	Sarasota/Bradenton	\$778	\$348	\$468	\$802	\$593	\$430	\$310	(\$24)	\$185
SEA	Seattle	\$542	\$406	\$388	\$1,088	\$447	\$136	\$154	(\$546)	\$95
SYR	Syracuse	\$447	\$308	\$268	\$756	\$447	\$139	\$179	(\$309)	\$0
TPA	Tampa	\$447	\$483	\$317	\$846	\$447	(\$36)	\$130	(\$399)	\$0
YYZ	Toronto	\$862	\$719	\$650	\$691	\$804	\$143	\$212	\$171	\$58
DCA	Washington DC	\$437	\$263	\$258	\$847	\$503	\$174	\$179	(\$410)	(\$66)
IAD	Washington DC	\$437	\$262	\$258	\$847	\$503	\$175	\$179	(\$410)	(\$66)
PBI	West Palm Beach	\$687	\$232	\$356	\$681	\$593	\$455	\$331	\$6	\$94
							\$182	\$171	(\$150)	(\$39) Average Fare difference

*These sample airfares were available 08/31/09, based on a 0 day advance purchase and a 3 day stay. Other restrictions may apply. To obtain the most up-to-date pricing information for your travel needs, please contact your travel agent or visit the following web sites: www.airtran.com; www.continental.com; www.delta.com; www.nwa.com; www.usairways.com; www.travelocity.com; www.orbitz.com; or www.expedia.com. Airfares are subject to change without notice - and lower airfares are often not available on all dates. Please see our "special airfares" section on our web site for any last minute airfare specials. Sample airfares will be updated each Tuesday.

Blue highlighted numbers represent fare differentials in excess of \$35 for GSP, \$70 for CLT, \$100 for ATL, and \$35 for TRI.

Schedule Compare Report for all Airlines for Passenger flights between AVL and ALL for Sep09 vs. Sep08

AI	Ops/Week				Seats/Week			
	Sept09	Sept08	Diff	Pct Chg	Sept09	Sept08	Diff	Pct Chg
DL	138	116	22	18.97	6,900	6,518	382	5.86
FL	6	0	6	100	702	0	702	100
CO	38	40	-2	-5	1,900	2,000	-100	-5
NW	14	40	-26	-65	700	2,000	-1,300	-65
US	98	126	-28	-22.22	4,848	6,348	-1,500	-23.63
TOTAL	294	322	-28	-8.7	15,050	16,866	-1,816	-10.77

Schedule Compare Report for all Airlines for Passenger flights between AVL and ALL for Oct09 vs. Oct08

AI	Ops/Week				Seats/Week			
	Oct09	Oct08	Diff	Pct Chg	Oct09	Oct08	Diff	Pct Chg
DL	138	130	8	6.15	6,900	7,204	-304	-4.22
FL	6	0	6	100.00	702	0	702	100.00
CO	40	40	0	0.00	2,000	2,000	0	0.00
NW	14	40	-26	-65.00	700	2,000	-1,300	-65.00
US	98	126	-28	-22.22	4,848	6,348	-1,500	-23.63
TOTAL	296	336	-40	-11.90	15,150	17,552	-2,402	-13.69

Schedule Compare Report for all Airlines for Passenger flights between AVL and ALL for Nov09 vs. Nov08

AI	Ops/Week				Seats/Week			
	Nov09	Nov08	Diff	Pct Chg	Nov09	Nov08	Diff	Pct Chg
FL	6	0	6	100.00	702	0	702	100.00
CO	40	40	0	0.00	2,000	2,000	0	0.00
DL	138	142	-4	-2.82	6,900	7,180	-280	-3.90
US	98	124	-26	-20.97	4,900	5,902	-1,002	-16.98
NW	14	40	-26	-65.00	700	2,000	-1,300	-65.00
TOTAL	296	346	-50	-14.45	15,202	17,082	-1,880	-11.01



MEMORANDUM

TO: Members of the Airport Authority
 FROM: Vickie Thomas, Director of Finance & Accounting
 DATE: September, 2009

ITEM DESCRIPTION – Information Section Item B

Asheville Regional Airport – Explanation of Extraordinary Variances
 Month Ended July, 2009 (Month 1 of FY-2010)

SUMMARY

Operating Revenues for the month of July were \$599,037, 2.00% over budget. Operating Expenses for the month were \$467,857, 21.65% below budget. As a result, Net Operating Revenues before Depreciation were \$141,020 over budget. Net Non-Operating Revenues were \$171,554, 24.13% over budget.

REVENUES

Significant variations to budget for July were:

Terminal Space – Airline	21.22%	Airline Preferred Use Space not budgeted
Concessions	(13.52%)	Advertising decreased due to waiver of Departure Media's MAG until A-Gates open
Commercial Ground Transportation	409.29%	Timing of GT permits billed on an annual basis
Landing Fees	(22.25%)	Effect of economic downturn more than budgeted
FBO's/SASO's	(14.38%)	Odyssey did not move into Bulk Hanger #2 until mid-July
Other Leases/Fees	27.48%	Higher security payments from Airlines based on monthly traffic
CFC Revenue	9.34%	Higher CFC's due to monthly traffic
PFC Revenue	52.35%	Higher PFC's due to monthly traffic
Interest Revenue	(82.03%)	Lower than budgeted cash balances & interest rates



EXPENSES

Significant variations to budget for July were:

Personnel Services	(6.86%)	No Deputy Airport Director & lower than budgeted benefits
Professional Services	(43.87%)	Timing of expenses related to surveys, engineering & physicals
Other Contractual Services	(38.99%)	Timing of annual payments for IT contractual services
Travel & Training	(83.89%)	Timing of conferences and training events
Insurance	(14.78%)	Premiums lower than budgeted
Repairs & Maintenance	(18.16%)	Budgeted Airfield maintenance not spent in July
Printing & Binding	(21.62%)	Timing of printing purchases
Promotional Activities	(40.78%)	Timing of promotions
Other Current Charges	(44.47%)	Timing of legal notices
Office Supplies	(72.27%)	Timing of purchases
Operating Supplies	(24.83%)	Timing of purchases
Books, Publications, Subscriptions	(76.96%)	Timing of purchases
Contingency	(100.00%)	No Contingency used in July
Business Dev/Agreement Obligations	(77.13%)	Budgeted evenly throughout FY2010; only spending in July was for AirTran Ground Handling Fees

STATEMENT OF NET ASSETS

Significant variations to prior month were:

Accounts Receivable – Accounts Receivable decreased \$2.4M from prior month due to the collection of \$660k in AIP grants and \$1.7M of NC DOT grants.

Accounts Payable, Construction Contracts Payable & Construction Contract Retainage – In June, for year-end reporting purposes, Construction Contract Retainage was accrued and Construction Contracts Payable was reclassified from Accounts Payable.

**ASHEVILLE REGIONAL AIRPORT
INVESTMENT AND INTEREST INCOME SUMMARY
For the Month Ended July 2009**

<u>Institution:</u>	<u>Date of Purchase</u>	<u>Date of Maturity</u>	<u>Interest Rate</u>	<u>Investment Amount</u>	<u>Monthly Interest</u>
Bank of America			0.15%	\$ 2,285,015	293
Petty Cash				100	
NC Capital Trust				4,551,246	1,840
Restricted Cash:					
PFC Revenue Account			0.10%	1,340,346	106
Wachovia-Gov. Advantage Acct.			0.10%	608,999	52
CFC Revenue			0.10%	711,252	62
<u>Commercial Paper:</u>				0	
Total				<u>\$ 9,496,958</u>	<u>\$ 2,354</u>

Investment Diversification:

1.BANKS	45.67%
2.CAP.TRUST	47.92%
3.GOV.ADV.ACCT.	6.41%
4.COM.PAPER	0.00%
5. FED. AGY	0%
	<u>100.00%</u>

**ASHEVILLE REGIONAL AIRPORT
STATEMENT OF CHANGES IN FINANCIAL POSITION
For the Month Ended July 2009**

	<u>Month</u>	<u>Prior Period</u>
Cash and Investments Beginning of Period (Month 07-01-2009, Prior Period 6-01-09)	\$ 7,759,754	\$ 8,053,116
Net Income before Contributions	24,817	(523,659)
Depreciation	277,917	552,148
Decrease/(Increase) in Receivables	2,469,711	(2,360,178)
Increase/(Decrease) in Payables	(416,095)	1,130,015
Decrease/(Increase) in Prepaid Expenses	(89,689)	17,896
Decrease/(Increase) in Long Term Assets	(497,946)	(1,560,112)
Contributed Capital	-	2,481,888
Carryback of Payments to Prior Period		
Bonds Payable - Current	(31,511)	(31,360)
Bonds Payable - Non-Current		
Increase(Decrease) in Cash	<u>1,737,204</u>	<u>(293,362)</u>
Cash and Investments End of Period (07/31/2009)	<u>\$ 9,496,958</u>	<u>\$ 7,759,754</u>

Asheville Regional Airport Authority
Cost Centers Statement of Revenue, Expenses and Changes in Net Assets

For the Month Ending July 31, 2009

	<u>July Actual</u>	<u>July Budget</u>	<u>Variance %</u>	<u>YTD Actual</u>	<u>YTD Budget</u>	<u>Variance %</u>	<u>Annual Budget</u>
Operating Revenue:							
Terminal	\$273,341	\$255,658	6.92%	\$273,341	\$255,658	6.92%	\$3,154,910
Airfield	65,499	68,304	(4.11%)	65,499	68,304	(4.11%)	819,650
Hangar	62,348	72,816	(14.38%)	62,348	72,816	(14.38%)	873,790
Parking Lot/Roadway	187,589	179,508	4.50%	187,589	179,508	4.50%	2,154,100
Land Use Fees	10,260	10,987	(6.62%)	10,260	10,987	(6.62%)	140,940
Total Operating Revenue	\$599,037	\$587,273	2.00%	\$599,037	\$587,273	2.00%	\$7,143,390
Operating Expenses:							
Administrative	\$174,634	\$302,087	(42.19%)	\$174,634	\$302,087	(42.19%)	\$3,032,575
Terminal	159,894	164,058	(2.54%)	159,894	164,058	(2.54%)	2,033,790
Airfield	127,868	121,381	5.34%	127,868	121,381	5.34%	1,399,045
Hangar	1,633	4,625	(64.69%)	1,633	4,625	(64.69%)	57,565
Parking Lot	895	2,966	(69.82%)	895	2,966	(69.82%)	40,770
Rental Car Service Facility	2,116	-	0.00%	2,116	-	0.00%	-
Land Use Expenses	817	1,996	(59.07%)	817	1,996	(59.07%)	26,015
Total Operating Expenses	\$467,857	\$597,113	(21.65%)	\$467,857	\$597,113	(21.65%)	\$6,589,760
Operating Revenue before Depreciation							
	\$131,180	(\$9,840)	(1,433.13%)	\$131,180	(\$9,840)	(1,433.13%)	\$553,630
Depreciation	277,917	291,667	(4.71%)	277,917	291,667	(4.71%)	3,500,000
Operating Income(Loss) Before Non-Operating Revenue and Expenses							
	(\$146,737)	(\$301,507)	(51.33%)	(\$146,737)	(\$301,507)	(51.33%)	(\$2,946,370)
Non-Operating Revenue and Expense							
Customer Facility Charges	82,008	75,000	9.34%	82,008	75,000	9.34%	900,000
Passenger Facility Charges	107,916	70,833	52.35%	107,916	70,833	52.35%	850,000
Interest Revenue	2,354	13,100	(82.03%)	2,354	13,100	(82.03%)	157,200
Interest Expense	(20,724)	(20,724)	0.00%	(20,724)	(20,724)	0.00%	(238,488)
Sale of Assets	-	-	0.00%	-	-	0.00%	-
Non-Operating Revenue-Net	\$171,554	\$138,209	24.13%	\$171,554	\$138,209	24.13%	\$1,668,712

Income (Loss) Before Capital Contributions	<u>\$24,817</u>	<u>(\$163,298)</u>	<u>(115.20%)</u>	<u>\$24,817</u>	<u>(\$163,298)</u>	<u>(115.20%)</u>	<u>(\$1,277,658)</u>
Capital Contributions	<u>\$0</u>	<u>\$0</u>	<u>0.00%</u>	<u>\$0</u>	<u>\$0</u>	<u>0.00%</u>	<u>\$0</u>
Increase in Net Assets	<u><u>\$24,817</u></u>	<u><u>(\$163,298)</u></u>	<u><u>(115.20%)</u></u>	<u><u>\$24,817</u></u>	<u><u>(\$163,298)</u></u>	<u><u>(115.20%)</u></u>	<u><u>(\$1,277,658)</u></u>

Asheville Regional Airport Authority
Detailed Statement of Revenue, Expenses and Changes in Net Assets

For the Month Ending July 31, 2009

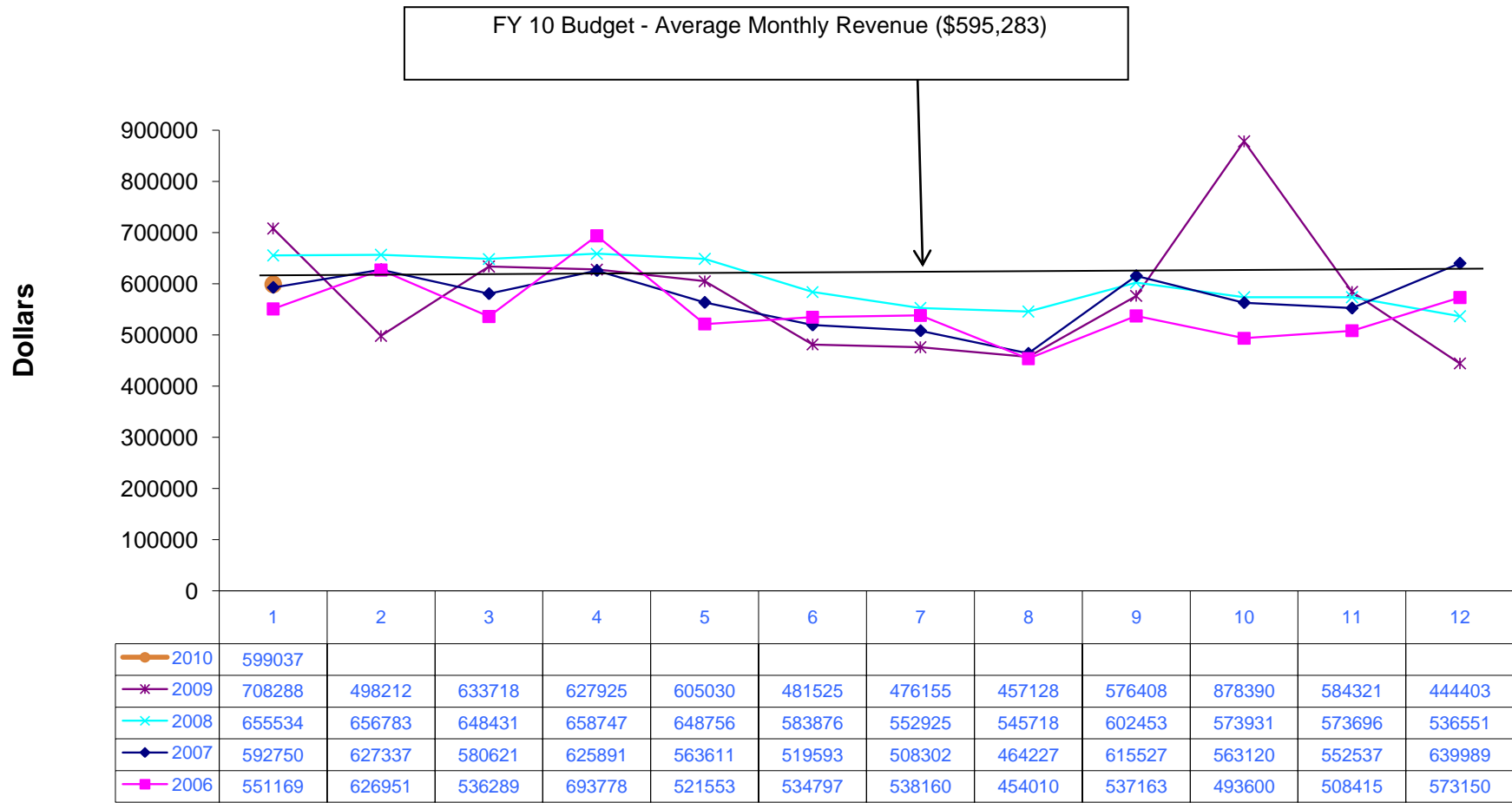
	July Actual	July Budget	Variance %	YTD Actual	YTD Budget	Variance %	Annual Budget
Operating Revenue:							
Terminal Space Rentals - Non Airline	\$15,395	\$14,988	2.72%	\$15,395	\$14,988	2.72%	\$179,850
Terminal Space Rentals - Airline	104,181	85,943	21.22%	104,181	85,943	21.22%	1,031,310
Concessions	15,669	18,118	(13.52%)	15,669	18,118	(13.52%)	291,370
Auto Parking	177,719	177,571	0.08%	177,719	177,571	0.08%	2,130,850
Rental Car - Car Rentals	96,348	96,348	0.00%	96,348	96,348	0.00%	1,156,170
Rental Car - Facility Rent	42,012	41,792	0.53%	42,012	41,792	0.53%	514,570
Commercial Ground Transportation	9,870	1,938	409.29%	9,870	1,938	409.29%	23,250
Landing Fees	31,918	41,054	(22.25%)	31,918	41,054	(22.25%)	492,650
FBO'S/SASO'S	62,348	72,816	(14.38%)	62,348	72,816	(14.38%)	873,790
Building Leases	8,354	8,625	(3.14%)	8,354	8,625	(3.14%)	103,500
Land Leases	1,906	1,945	(2.01%)	1,906	1,945	(2.01%)	32,440
Other Leases/Fees	33,317	26,135	27.48%	33,317	26,135	27.48%	313,640
Total Operating Revenue	\$599,037	\$587,273	2.00%	\$599,037	\$587,273	2.00%	\$7,143,390
Operating Expenses:							
Personnel Services	\$283,680	\$304,576	(6.86%)	\$283,680	\$304,576	(6.86%)	\$3,661,630
Professional Services	19,682	35,068	(43.87%)	19,682	35,068	(43.87%)	176,150
Accounting & Auditing	2,933	2,933	0.00%	2,933	2,933	0.00%	32,000
Other Contractual Services	46,433	76,111	(38.99%)	46,433	76,111	(38.99%)	441,560
Travel & Training	729	4,525	(83.89%)	729	4,525	(83.89%)	191,930
Communications & Freight	4,871	5,379	(9.44%)	4,871	5,379	(9.44%)	64,750
Utility Services	28,445	26,774	6.24%	28,445	26,774	6.24%	425,000
Rentals & Leases	1,012	1,018	(0.59%)	1,012	1,018	(0.59%)	12,220
Insurance	16,334	19,167	(14.78%)	16,334	19,167	(14.78%)	230,000
Repairs & Maintenance	18,215	22,258	(18.16%)	18,215	22,258	(18.16%)	293,570
Printing & Binding	14,375	18,341	(21.62%)	14,375	18,341	(21.62%)	206,120
Promotional Activities	3,265	5,513	(40.78%)	3,265	5,513	(40.78%)	65,400
Other Current Charges & Obligations	3,630	6,537	(44.47%)	3,630	6,537	(44.47%)	59,050
Office Supplies	624	2,250	(72.27%)	624	2,250	(72.27%)	27,000
Operating Supplies	14,079	18,729	(24.83%)	14,079	18,729	(24.83%)	284,790
Books, Publications, Subscriptions & Mem	2,400	10,417	(76.96%)	2,400	10,417	(76.96%)	43,590
Contingency	-	6,250	(100.00%)	-	6,250	(100.00%)	75,000
Business Development/Agreement Obliga	7,150	31,267	(77.13%)	7,150	31,267	(77.13%)	300,000
Total Operating Expenses	\$467,857	\$597,113	(21.65%)	\$467,857	\$597,113	(21.65%)	\$6,589,760

Operating Revenue before Depreciation	\$131,180	(\$9,840)	(1,433.13%)	\$131,180	(\$9,840)	(1,433.13%)	\$553,630
Depreciation	<u>277,917</u>	<u>291,667</u>	<u>(4.71%)</u>	<u>277,917</u>	<u>291,667</u>	<u>(4.71%)</u>	<u>3,500,000</u>
Operating Income(Loss) Before Non-Operating Revenue and Expenses	(\$146,737)	(\$301,507)	(51.33%)	(\$146,737)	(\$301,507)	(51.33%)	(\$2,946,370)
Non-Operating Revenue and Expense							
Customer Facility Charges	82,008	75,000	9.34%	82,008	75,000	9.34%	900,000
Passenger Facility Charges	107,916	70,833	52.35%	107,916	70,833	52.35%	850,000
Interest Revenue	2,354	13,100	(82.03%)	2,354	13,100	(82.03%)	157,200
Interest Expense	(20,724)	(20,724)	0.00%	(20,724)	(20,724)	0.00%	(238,488)
Sale of Assets	-	-	0.00%	-	-	0.00%	-
Non-Operating Revenue-Net	<u>\$171,554</u>	<u>\$138,209</u>	<u>24.13%</u>	<u>\$171,554</u>	<u>\$138,209</u>	<u>24.13%</u>	<u>\$1,668,712</u>
Income (Loss) Before Capital Contributions	<u>\$24,817</u>	<u>(\$163,298)</u>	<u>(115.20%)</u>	<u>\$24,817</u>	<u>(\$163,298)</u>	<u>(115.20%)</u>	<u>(\$1,277,658)</u>
Capital Contributions	<u>\$0</u>	<u>\$0</u>	<u>0.00%</u>	<u>\$0</u>	<u>\$0</u>	<u>0.00%</u>	<u>\$0</u>
Increase in Net Assets	<u><u>\$24,817</u></u>	<u><u>(\$163,298)</u></u>	<u><u>(115.20%)</u></u>	<u><u>\$24,817</u></u>	<u><u>(\$163,298)</u></u>	<u><u>(115.20%)</u></u>	<u><u>(\$1,277,658)</u></u>

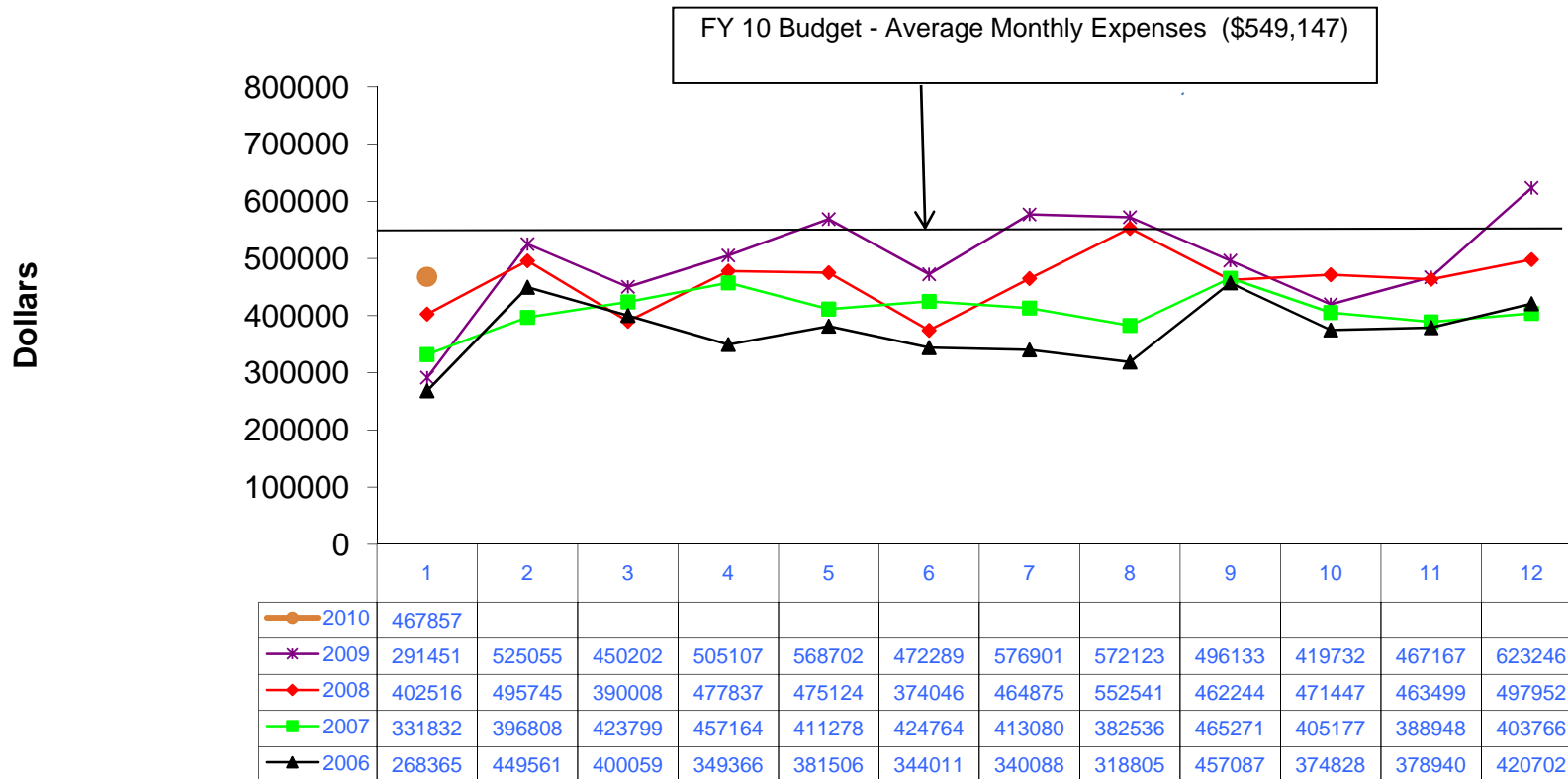
ASHEVILLE REGIONAL AIRPORT AUTHORITY
STATEMENT OF FINANCIAL POSITION
July 31, 2009

	July	Last Month
ASSETS		
Current Assets		
Unrestricted Net Assets:		
Cash and Cash Equivalents	\$6,836,361	\$5,154,918
Investments	0	0
Accounts Receivable	514,057	2,983,768
Prepaid Expenses	89,689	
Total Unrestricted Assets	7,440,107	8,138,686
Restricted Assets:		
Capital Funds	2,163	0
Cash and Cash Equivalents	2,660,597	2,604,836
Receivables		
Passenger Facility Charge Funds:		
Receivables		
Total Restricted Assets	2,662,760	2,604,836
Total Current Assets	10,102,867	10,743,522
Noncurrent Assets		
Capital Assets	16,275,788	15,808,476
Property and Equipment - Net	45,174,292	45,452,209
TOTAL ASSETS	\$71,552,947	\$72,004,207
LIABILITIES AND NET ASSETS		
Liabilities		
Accounts Payable	\$1,845,937	\$764,833
Accrued Liabilities	\$186,619	\$191,240
Total Payable from Unrestricted Assets	2,032,556	956,073
Payable from Restricted Assets:		
Construction Contracts Payable	0	1,233,648
Construction Contract Retainages	0	287,401
Bonds Payable - Current Portion	390,209	388,335
Total Payable From Restricted Assets	390,209	1,909,384
Total Current Liabilities	2,422,765	2,865,457
Non-Current Liabilities:		
Rental Car Project Bond	3,873,365	3,906,751
Total Non-Current Liabilities	3,873,365	3,906,751
Total Liabilities	6,296,130	6,772,208
Net Assets:		
Invested in Capital Assets	45,174,292	45,452,209
Unrestricted	20,082,525	19,779,790
Total Net Assets	65,256,817	65,231,999
TOTAL LIABILITIES	\$71,552,947	\$72,004,207

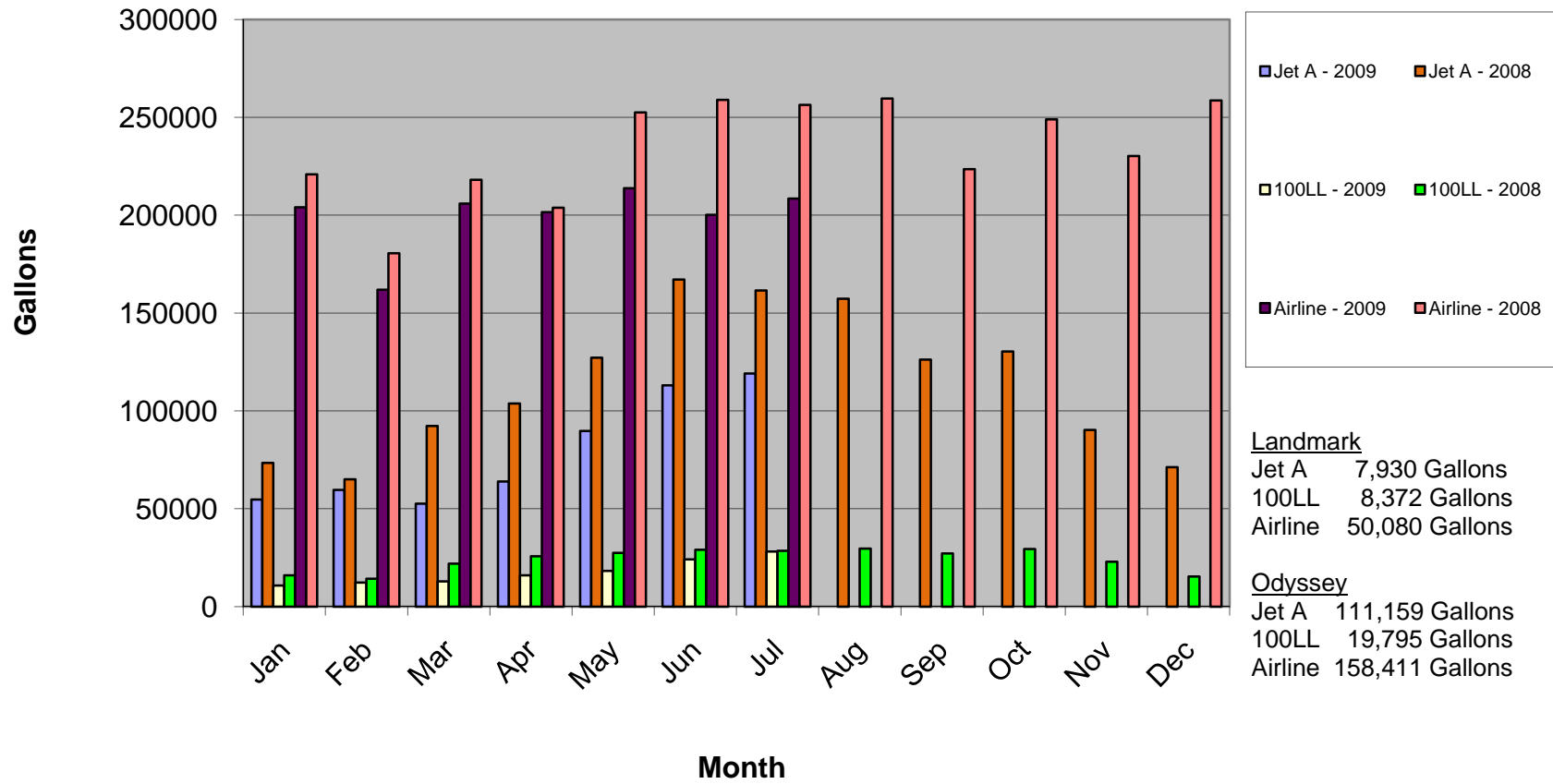
ASHEVILLE REGIONAL AIRPORT Annual Operating Revenue by Month July 2009



ASHEVILLE REGIONAL AIRPORT Annual Operating Expenses by Month July 2009



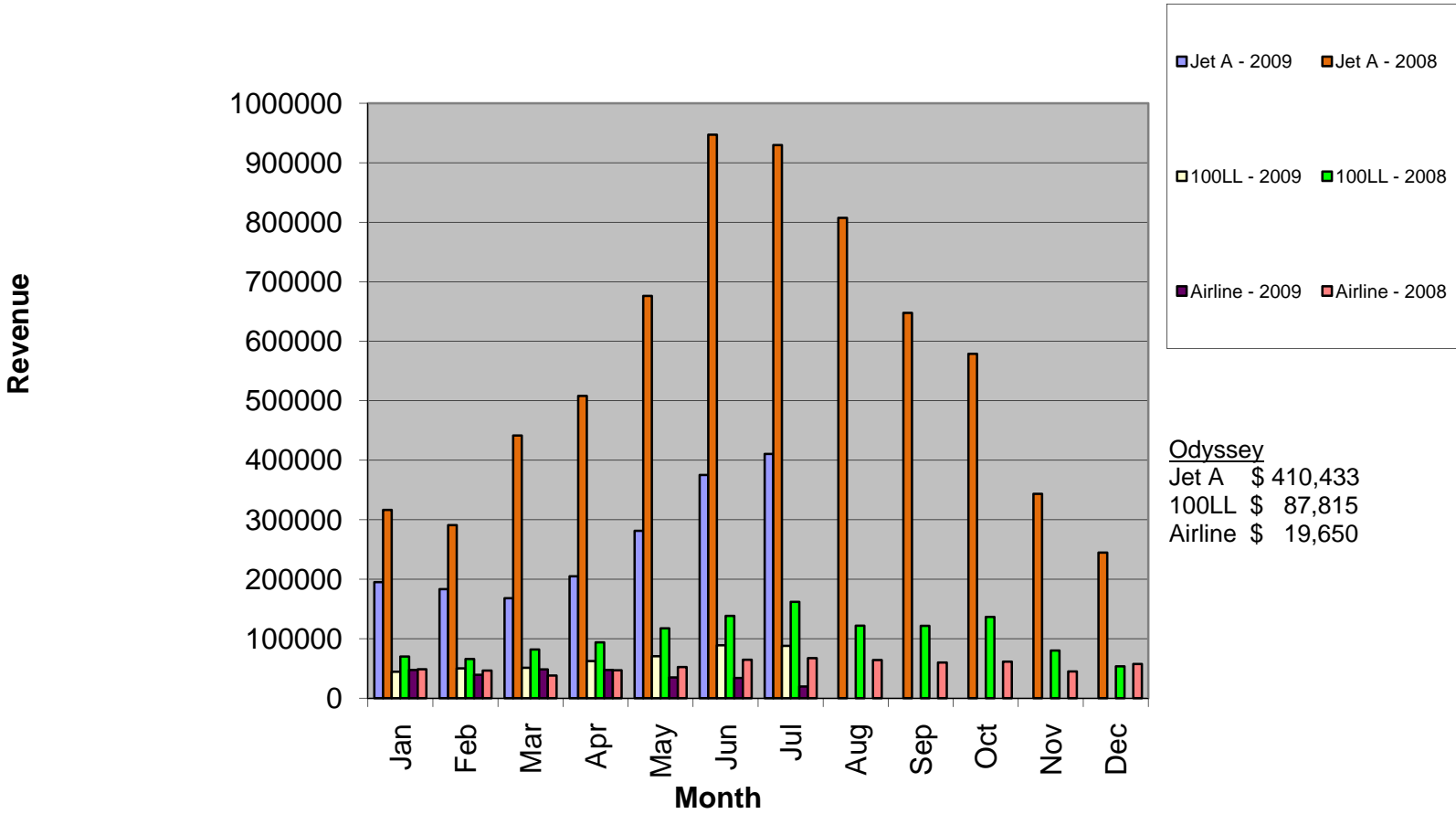
AVL Fuels Sales - Gallons July 2009



Landmark
 Jet A 7,930 Gallons
 100LL 8,372 Gallons
 Airline 50,080 Gallons

Odyssey
 Jet A 111,159 Gallons
 100LL 19,795 Gallons
 Airline 158,411 Gallons

AVL Fuels Sales - Revenue July 2009





MEMORANDUM

TO: Members of the Airport Authority

FROM: Patti L. Michel, Director of Marketing and Public Relations

DATE: September, 2009

ITEM DESCRIPTION – Information Section Item C

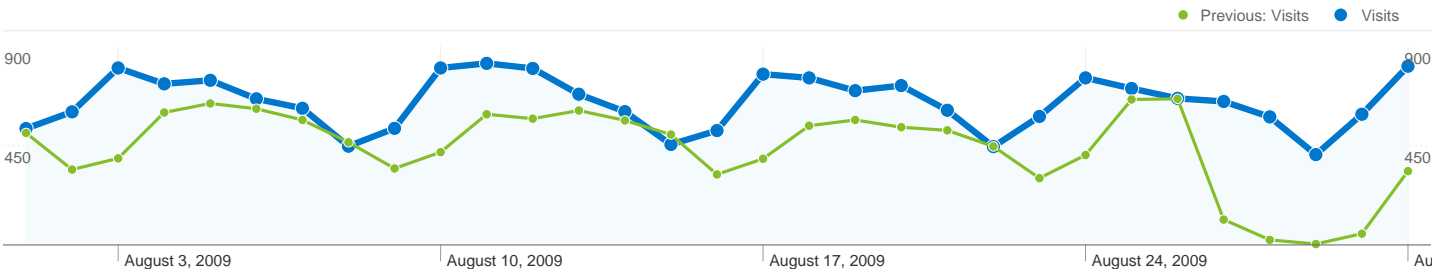
September, 2009 Marketing and Public Relations Report

- Followed up with air carrier regarding new air service opportunity.
- Completed artwork/creative for Holiday cards; AirTran's Go Magazine, construction posters; Wrote text for Advantage West website, Heart of Brevard Business Spotlight; Artwork/copy for E-News, and news release construction begins at AVL.
- Guest Services provided assistance to 3592 passengers in August, a 63% increase over August 2008.
- Guest Services posted \$44.84 in gross revenue of business services.
- Guest Services sold two brochure ad spaces.
- Guest Services Coordinator contacted all brochure companies and introduced self; sent out contract and renewal letter to those expiring in July and August.
- Attended Asheville CVB marketing update; attended Economic Development Annual meeting; attended Rotary Club breakfast with Sen. Burr.
- Met with the Community Foundation of Western North Carolina and Asheville Community Theater regarding sponsorships.
- Met with Asheville CVB Visitor Guide, and Charter Media regarding ad buy.
- Received an average of 33 phone calls per day during business hours.

Information Section – Item C



- Received/responded to 97 Southern Living leads for August.
- Received/responded to 9 media calls during the month of August.
- Website Statistics - Google Analytics: See attached data regarding August activity at www.flyavl.com
- Booking Engine Statistics – Since August 1, AVL has had 74 reservations for a total of \$552.00 in booking fees collected. 667 new people signed up to be booking engine members.



Site Usage

20,140 Visits

Previous: 13,629 (47.77%)

42.22% Bounce Rate

Previous: 36.12% (16.90%)

67,213 Pageviews

Previous: 53,587 (25.43%)

00:03:39 Avg. Time on Site

Previous: 00:07:38 (-52.24%)

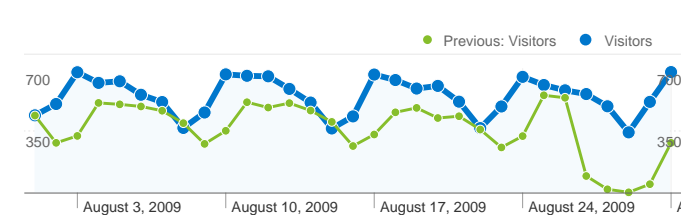
3.34 Pages/Visit

Previous: 3.93 (-15.12%)

65.68% % New Visits

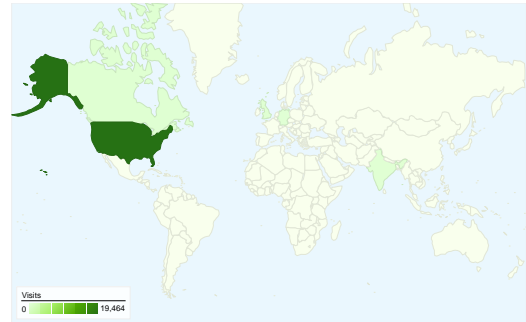
Previous: 64.75% (1.43%)

Visitors Overview

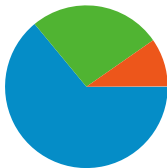


Visitors
14,917

Map Overlay world



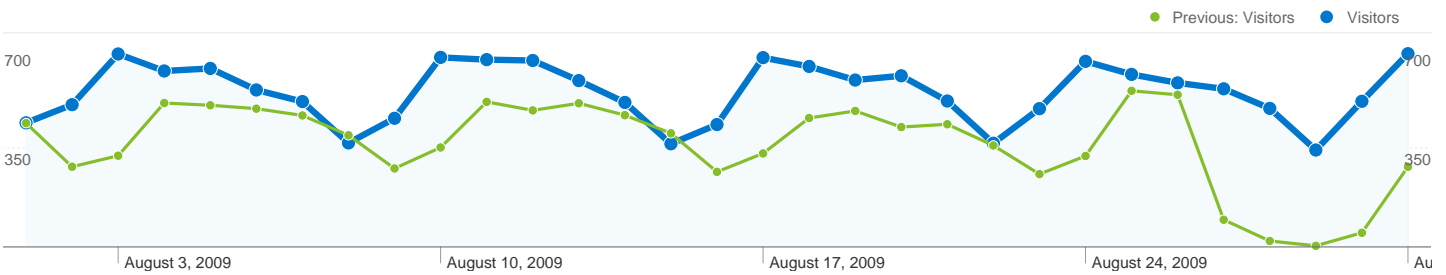
Traffic Sources Overview



- **Search Engines**
12,893.00 (64.02%)
- **Direct Traffic**
5,297.00 (26.30%)
- **Referring Sites**
1,939.00 (9.63%)
- **Other**
11 (0.05%)

Referring Sites		
Source	Visits	% visits
biltmore.com		
Aug 1, 2009 - Aug 31, 2009	104	5.36%
Aug 1, 2008 - Aug 31, 2008	103	6.17%
% Change	0.97%	-13.09%
willowwinds.com		
Aug 1, 2009 - Aug 31, 2009	79	4.07%
Aug 1, 2008 - Aug 31, 2008	73	4.37%
% Change	8.22%	-6.85%
en.wikipedia.org		
Aug 1, 2009 - Aug 31, 2009	75	3.87%
Aug 1, 2008 - Aug 31, 2008	47	2.82%
% Change	59.57%	37.35%
charter.net		
Aug 1, 2009 - Aug 31, 2009	64	3.30%
Aug 1, 2008 - Aug 31, 2008	33	1.98%
% Change	93.94%	66.93%
google.com		
Aug 1, 2009 - Aug 31, 2009	58	2.99%
Aug 1, 2008 - Aug 31, 2008	58	3.48%
% Change	0.00%	-13.92%

Content Overview		
Pages	Pageviews	% Pageviews
/		
Aug 1, 2009 - Aug 31, 2009	18,741	27.88%
Aug 1, 2008 - Aug 31, 2008	15,449	28.83%
% Change	21.31%	-3.28%
/flights/flight-view---real-time.html		
Aug 1, 2009 - Aug 31, 2009	7,048	10.49%
Aug 1, 2008 - Aug 31, 2008	8,256	15.41%
% Change	-14.63%	-31.94%
/flights/arrivals---real-time.html		
Aug 1, 2009 - Aug 31, 2009	3,512	5.23%
Aug 1, 2008 - Aug 31, 2008	2,819	5.26%
% Change	24.58%	-0.67%
/flights/flight-schedule-search.html		
Aug 1, 2009 - Aug 31, 2009	2,551	3.80%
Aug 1, 2008 - Aug 31, 2008	1,311	2.45%
% Change	94.58%	55.14%
/airlines/airtran.html		
Aug 1, 2009 - Aug 31, 2009	2,375	3.53%
Aug 1, 2008 - Aug 31, 2008	0	0.00%
% Change	100.00%	100.00%



14,917 people visited this site

20,140 Visits

Previous: 13,629 (47.77%)

14,917 Absolute Unique Visitors

Previous: 9,795 (52.29%)

67,213 Pageviews

Previous: 53,587 (25.43%)

3.34 Average Pageviews

Previous: 3.93 (-15.12%)

00:03:39 Time on Site

Previous: 00:07:38 (-52.24%)

42.22% Bounce Rate

Previous: 36.12% (16.90%)

65.68% New Visits

Previous: 64.75% (1.43%)

Technical Profile

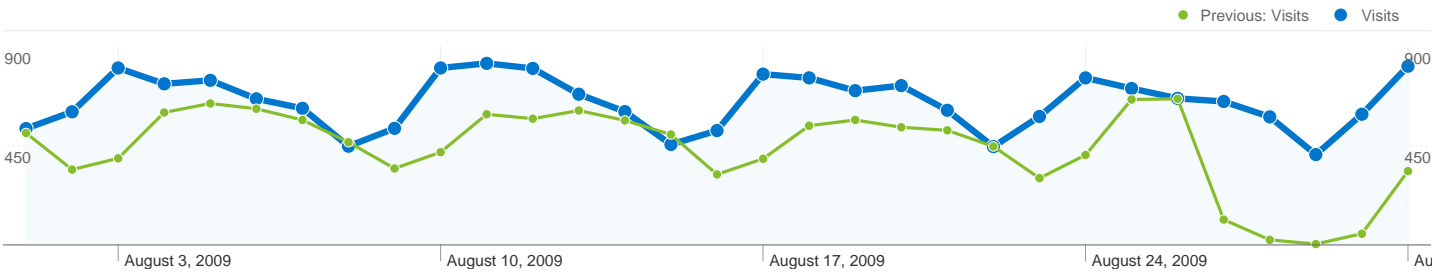
Browser	Visits	% visits	Connection Speed	Visits	% visits
Internet Explorer			Cable		
Aug 1, 2009 - Aug 31, 2009	13,293	66.00%	Aug 1, 2009 - Aug 31, 2009	7,238	35.94%
Aug 1, 2008 - Aug 31, 2008	10,021	73.53%	Aug 1, 2008 - Aug 31, 2008	4,757	34.90%
% Change	32.65%	-10.23%	% Change	52.15%	2.97%
Firefox			Unknown		
Aug 1, 2009 - Aug 31, 2009	4,103	20.37%	Aug 1, 2009 - Aug 31, 2009	5,751	28.56%
Aug 1, 2008 - Aug 31, 2008	2,552	18.72%	Aug 1, 2008 - Aug 31, 2008	3,411	25.03%
% Change	60.78%	8.80%	% Change	68.60%	14.09%

Safari		
Aug 1, 2009 - Aug 31, 2009	1,843	9.15%
Aug 1, 2008 - Aug 31, 2008	747	5.48%
% Change	146.72%	66.96%
Mozilla Compatible Agent		
Aug 1, 2009 - Aug 31, 2009	340	1.69%
Aug 1, 2008 - Aug 31, 2008	49	0.36%
% Change	593.88%	369.56%
Chrome		
Aug 1, 2009 - Aug 31, 2009	302	1.50%
Aug 1, 2008 - Aug 31, 2008	0	0.00%
% Change	100.00%	100.00%

DSL		
Aug 1, 2009 - Aug 31, 2009	5,037	25.01%
Aug 1, 2008 - Aug 31, 2008	3,407	25.00%
% Change	47.84%	0.05%
T1		
Aug 1, 2009 - Aug 31, 2009	1,482	7.36%
Aug 1, 2008 - Aug 31, 2008	1,325	9.72%
% Change	11.85%	-24.31%
Dialup		
Aug 1, 2009 - Aug 31, 2009	432	2.14%
Aug 1, 2008 - Aug 31, 2008	514	3.77%
% Change	-15.95%	-43.12%

Traffic Sources Overview

Aug 1, 2009 - Aug 31, 2009
Comparing to: Aug 1, 2008 - Aug 31, 2008



All traffic sources sent a total of 20,140 visits

26.30% Direct Traffic

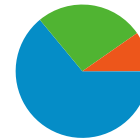
Previous: 23.42% (12.30%)

9.63% Referring Sites

Previous: 12.25% (-21.38%)

64.02% Search Engines

Previous: 64.31% (-0.46%)



- **Search Engines**
12,893.00 (64.02%)
- **Direct Traffic**
5,297.00 (26.30%)
- **Referring Sites**
1,939.00 (9.63%)
- **Other**
11 (0.05%)

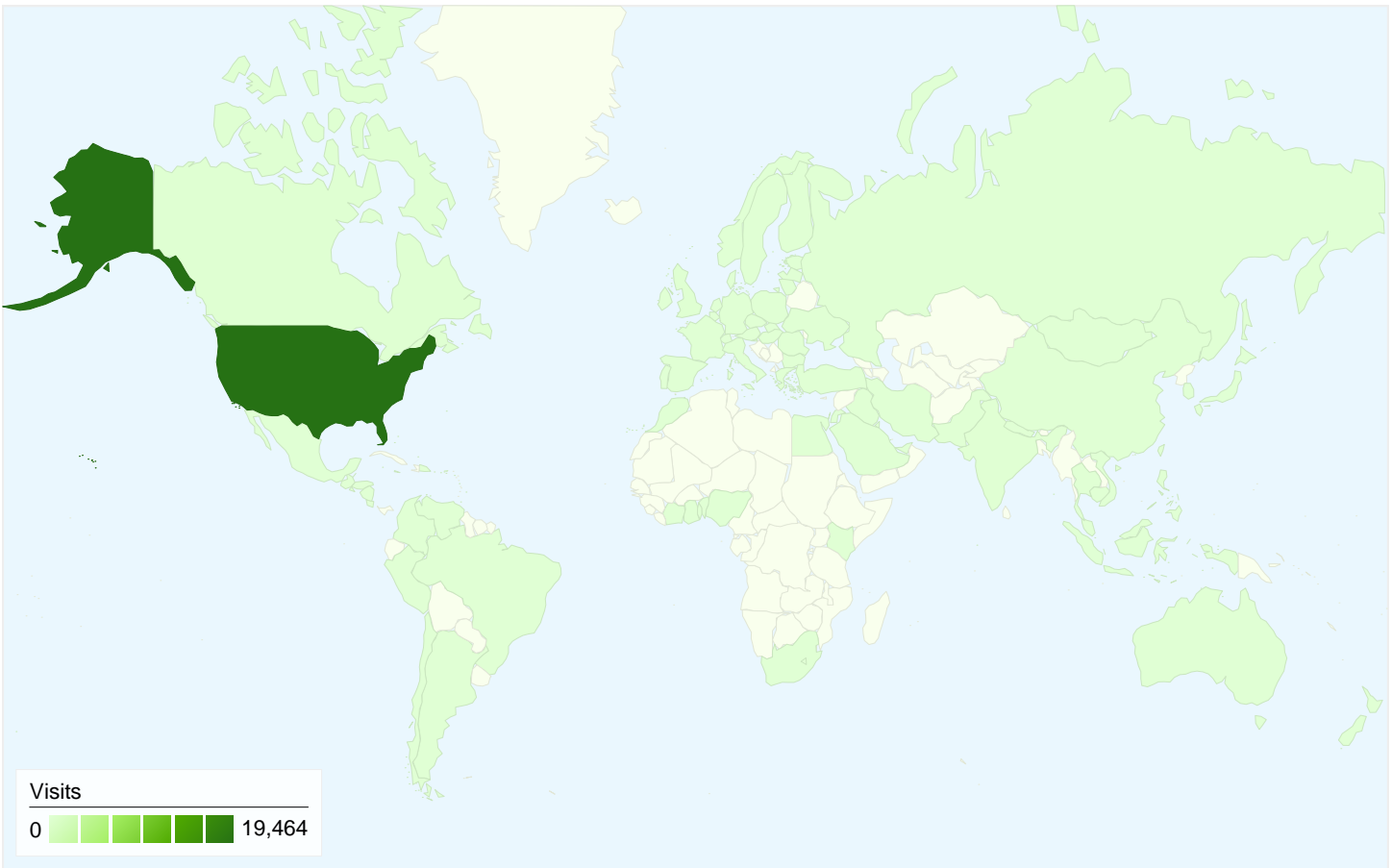
Top Traffic Sources

Sources	Visits	% visits
google (organic)		
Aug 1, 2009 - Aug 31, 2009	10,176	50.53%
Aug 1, 2008 - Aug 31, 2008	6,601	48.43%
% Change	54.16%	4.32%
(direct) ((none))		
Aug 1, 2009 - Aug 31, 2009	5,297	26.30%
Aug 1, 2008 - Aug 31, 2008	3,192	23.42%
% Change	65.95%	12.30%
yahoo (organic)		
Aug 1, 2009 - Aug 31, 2009	1,391	6.91%
Aug 1, 2008 - Aug 31, 2008	977	7.17%
% Change	42.37%	-3.65%
bing (organic)		
Aug 1, 2009 - Aug 31, 2009	841	4.18%
Aug 1, 2008 - Aug 31, 2008	0	0.00%
% Change	100.00%	100.00%
aol (organic)		

Keywords	Visits	% visits
asheville airport		
Aug 1, 2009 - Aug 31, 2009	4,518	35.04%
Aug 1, 2008 - Aug 31, 2008	2,576	29.39%
% Change	75.39%	19.23%
asheville nc airport		
Aug 1, 2009 - Aug 31, 2009	1,138	8.83%
Aug 1, 2008 - Aug 31, 2008	556	6.34%
% Change	104.68%	39.14%
asheville regional airport		
Aug 1, 2009 - Aug 31, 2009	1,076	8.35%
Aug 1, 2008 - Aug 31, 2008	796	9.08%
% Change	35.18%	-8.10%
avl		
Aug 1, 2009 - Aug 31, 2009	454	3.52%
Aug 1, 2008 - Aug 31, 2008	396	4.52%
% Change	14.65%	-22.06%
avl airport		

Aug 1, 2009 - Aug 31, 2009	304	1.51%
Aug 1, 2008 - Aug 31, 2008	271	1.99%
% Change	12.18%	-24.09%

Aug 1, 2009 - Aug 31, 2009	424	3.29%
Aug 1, 2008 - Aug 31, 2008	240	2.74%
% Change	76.67%	20.10%



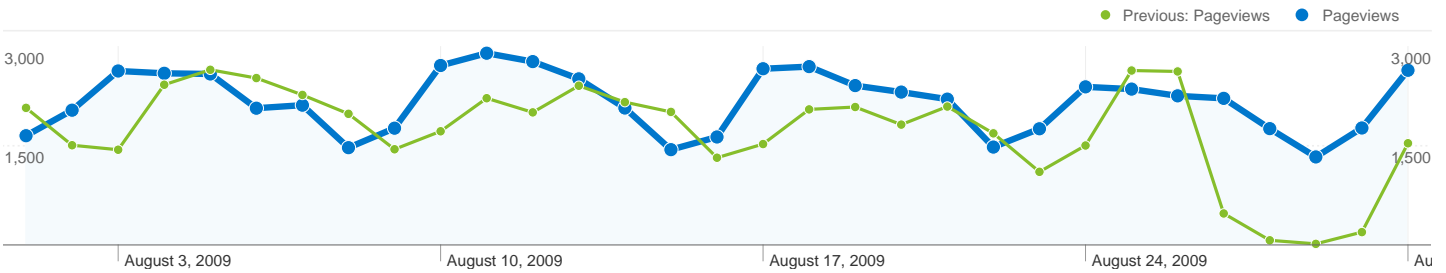
20,140 visits came from 100 countries/territories

Site Usage

Visits	Pages/Visit	Avg. Time on Site	% New Visits	Bounce Rate	
20,140 Previous: 13,629 (47.77%)	3.34 Previous: 3.93 (-15.12%)	00:03:39 Previous: 00:07:38 (-52.24%)	65.74% Previous: 65.02% (1.10%)	42.22% Previous: 36.12% (16.90%)	
Country/Territory	Visits	Pages/Visit	Avg. Time on Site	% New Visits	Bounce Rate
United States					
August 1, 2009 - August 31, 2009	19,464	3.34	00:03:41	65.42%	42.03%
August 1, 2008 - August 31, 2008	12,966	3.99	00:07:52	65.20%	35.43%
% Change	50.12%	-16.18%	-53.24%	0.33%	18.63%
United Kingdom					
August 1, 2009 - August 31, 2009	140	4.18	00:04:17	68.57%	27.14%
August 1, 2008 - August 31, 2008	88	3.08	00:02:23	71.59%	35.23%
% Change	59.09%	35.69%	79.02%	-4.22%	-22.95%
Canada					
August 1, 2009 - August 31, 2009	132	2.77	00:02:21	84.85%	48.48%

August 1, 2008 - August 31, 2008	81	3.40	00:02:29	82.72%	38.27%
% Change	62.96%	-18.33%	-5.47%	2.58%	26.69%
India					
August 1, 2009 - August 31, 2009	66	1.61	00:00:31	48.48%	77.27%
August 1, 2008 - August 31, 2008	54	2.57	00:01:50	44.44%	62.96%
% Change	22.22%	-37.61%	-71.99%	9.09%	22.73%
Germany					
August 1, 2009 - August 31, 2009	47	4.91	00:05:05	68.09%	40.43%
August 1, 2008 - August 31, 2008	50	4.34	00:03:51	80.00%	36.00%
% Change	-6.00%	13.25%	32.40%	-14.89%	12.29%
Philippines					
August 1, 2009 - August 31, 2009	17	2.12	00:00:28	94.12%	70.59%
August 1, 2008 - August 31, 2008	11	2.45	00:01:19	100.00%	45.45%
% Change	54.55%	-13.73%	-64.96%	-5.88%	55.29%
Australia					
August 1, 2009 - August 31, 2009	17	2.00	00:04:09	70.59%	70.59%
August 1, 2008 - August 31, 2008	7	2.29	00:00:19	100.00%	71.43%
% Change	142.86%	-12.50%	1,219.21%	-29.41%	-1.18%
Switzerland					
August 1, 2009 - August 31, 2009	15	4.73	00:03:10	60.00%	26.67%
August 1, 2008 - August 31, 2008	12	1.75	00:02:41	50.00%	50.00%
% Change	25.00%	170.48%	18.46%	20.00%	-46.67%
Taiwan					
August 1, 2009 - August 31, 2009	14	4.36	00:02:12	57.14%	57.14%
August 1, 2008 - August 31, 2008	2	2.00	00:01:13	100.00%	50.00%
% Change	600.00%	117.86%	80.82%	-42.86%	14.29%
Japan					
August 1, 2009 - August 31, 2009	12	3.67	00:03:28	50.00%	41.67%
August 1, 2008 - August 31, 2008	18	3.33	00:01:14	66.67%	44.44%
% Change	-33.33%	10.00%	182.03%	-25.00%	-6.25%

1 - 10 of 100



Pages on this site were viewed a total of 67,213 times

67,213 Pageviews
Previous: 53,587 (25.43%)

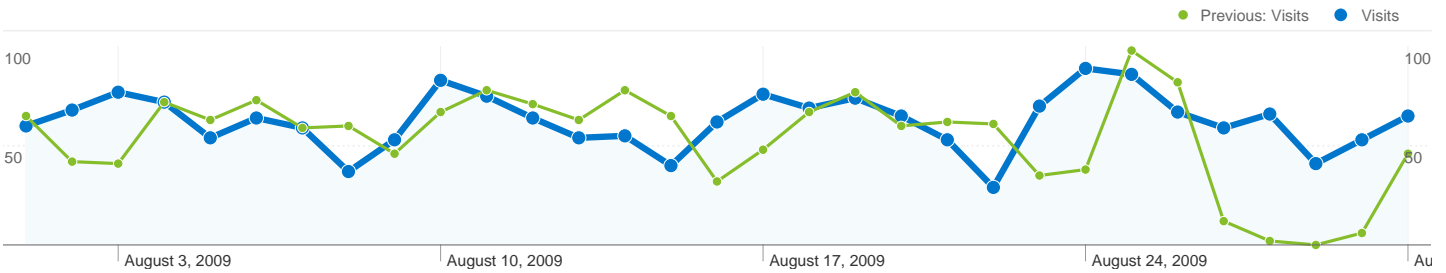
47,002 Unique Views
Previous: 33,831 (38.93%)

42.22% Bounce Rate
Previous: 36.12% (16.90%)

Top Content

Pages	Pageviews	% Pageviews
/		
Aug 1, 2009 - Aug 31, 2009	18,741	27.88%
Aug 1, 2008 - Aug 31, 2008	15,449	28.83%
% Change	21.31%	-3.28%
/flights/flight-view---real-time.html		
Aug 1, 2009 - Aug 31, 2009	7,048	10.49%
Aug 1, 2008 - Aug 31, 2008	8,256	15.41%
% Change	-14.63%	-31.94%
/flights/arrivals---real-time.html		
Aug 1, 2009 - Aug 31, 2009	3,512	5.23%
Aug 1, 2008 - Aug 31, 2008	2,819	5.26%
% Change	24.58%	-0.67%
/flights/flight-schedule-search.html		
Aug 1, 2009 - Aug 31, 2009	2,551	3.80%
Aug 1, 2008 - Aug 31, 2008	1,311	2.45%
% Change	94.58%	55.14%
/airlines/airtran.html		

Aug 1, 2009 - Aug 31, 2009	2,375	3.53%
Aug 1, 2008 - Aug 31, 2008	0	0.00%
% Change	100.00%	100.00%



Referring sites sent 1,939 visits via 498 sources

Site Usage

Visits	Pages/Visit	Avg. Time on Site	% New Visits	Bounce Rate	
1,939 Previous: 1,669 (16.18%)	2.92 Previous: 2.95 (-0.80%)	00:01:59 Previous: 00:02:07 (-5.72%)	75.81% Previous: 76.39% (-0.76%)	52.35% Previous: 49.73% (5.26%)	
Source	Visits	Pages/Visit	Avg. Time on Site	% New Visits	Bounce Rate
biltmore.com					
August 1, 2009 - August 31, 2009	104	1.82	00:01:05	92.31%	74.04%
August 1, 2008 - August 31, 2008	103	1.90	00:01:38	90.29%	66.02%
% Change	0.97%	-4.50%	-33.46%	2.23%	12.15%
willowwinds.com					
August 1, 2009 - August 31, 2009	79	2.19	00:01:06	87.34%	53.16%
August 1, 2008 - August 31, 2008	73	2.14	00:01:32	83.56%	56.16%
% Change	8.22%	2.47%	-28.72%	4.52%	-5.34%
en.wikipedia.org					
August 1, 2009 - August 31, 2009	75	5.75	00:02:48	81.33%	24.00%
August 1, 2008 - August 31, 2008	47	5.28	00:03:57	78.72%	21.28%
% Change	59.57%	8.91%	-29.18%	3.32%	12.80%
charter.net					
August 1, 2009 - August 31, 2009	64	4.38	00:03:35	75.00%	25.00%
August 1, 2008 - August 31, 2008	33	7.82	00:05:57	54.55%	9.09%
% Change	93.94%	-44.04%	-39.67%	37.50%	175.00%
google.com					
August 1, 2009 - August 31, 2009	58	2.83	00:02:28	65.52%	44.83%
August 1, 2008 - August 31, 2008	58	3.33	00:02:56	50.00%	32.76%
% Change	0.00%	-15.03%	-15.95%	31.03%	36.84%
mapquest.com					
August 1, 2009 - August 31, 2009	53	2.40	00:01:33	81.13%	39.62%

August 1, 2008 - August 31, 2008	48	2.15	00:01:38	89.58%	54.17%
% Change	10.42%	11.67%	-4.78%	-9.43%	-26.85%
groveparkinn.com					
August 1, 2009 - August 31, 2009	43	4.07	00:04:24	76.74%	53.49%
August 1, 2008 - August 31, 2008	66	3.21	00:03:22	89.39%	42.42%
% Change	-34.85%	26.70%	30.47%	-14.15%	26.08%
nps.gov					
August 1, 2009 - August 31, 2009	41	1.32	00:00:38	100.00%	78.05%
August 1, 2008 - August 31, 2008	9	1.00	00:00:00	77.78%	100.00%
% Change	355.56%	31.71%	100.00%	28.57%	-21.95%
ashevillenc.com					
August 1, 2009 - August 31, 2009	40	3.05	00:02:12	90.00%	42.50%
August 1, 2008 - August 31, 2008	37	3.51	00:01:59	86.49%	45.95%
% Change	8.11%	-13.19%	11.28%	4.06%	-7.50%
my.att.net					
August 1, 2009 - August 31, 2009	38	3.82	00:02:31	60.53%	23.68%
August 1, 2008 - August 31, 2008	79	5.27	00:02:46	64.56%	24.05%
% Change	-51.90%	-27.54%	-9.51%	-6.24%	-1.52%
					1 - 10 of 498

**Asheville Regional Airport Authority
Project Report - September 2009**

Project Number	Project Name	Project Description	Professional Services Consultant	Professional Services Contract	General Contractor	Original Construction Contract	Change Orders (thru 09/01/09)	Percent of Original Contract	Total Project Cost	Percent Complete	Expensed to Date (thru 09/01/09)	Start Date	End Date	Current Project Status (as of 09/01/09)
<u>Planning Phase</u>														
1	GA - Apron & TW Connector Project	The North GA Apron and TW Connector Project includes the design of 3 separate apron expansion areas and the addition of a new TW connector located North of TW D2.	AVCON	\$188,000.00	Young and McQueen	\$1,541,185.00	na	na	\$1,729,185.00	100%	\$186,400.00	na	na	This project is on hold until funding can be secured.
<u>Design Phase</u>														
None														
<u>Construction Phase</u>														
2	A Gates - Terminal Renovation & Improvements Project	Renovation & Improvements to the A Gates hold room area.	RS&H	\$1,697,298.00	Shelco Inc.	\$7,849,000.00	na	na	\$10,486,704.00	5%	\$1,018,965.11	July '09	Aug-10	The contractor has mobilized and started selective demolition in the project work area. The checkpoint modifications and temporary passenger connection to the B gates area is underway.
2a		2 Passenger Boarding Bridges	RS&H	(included above)	ThyssenKrupp Airport Systems	\$940,406.00	na	na	(included above)	5%	\$0.00	Jul-09	Aug-10	The contractor has been released to start work.
3	Landside Parking and Roadway Access Project	The Landside Parking and Roadway Access Project includes 3 components of work: public parking lots, terminal access roadway, general aviation access roadway, and expansion of the toll plaza facility.	LPA Group	\$729,044.00	(see below)	na	na	na	\$4,539,898.45	55%	\$666,640.06	Jul-09	Jan-10	The Authority Board approved the award of all contracts related to the Landside Roadway and Parking Improvements Project. All components of the project have started. For more information see individual components below.
3A		Parking Lot and Terminal Drive	LPA Group	(included above)	APAC	\$1,614,092.45	na	na	(included above)	5%	\$0.00	Jul-09	Jan-10	The contractor has completed the first phase of the parking lot improvements and is currently working on the second phase.
3B		Toll Plaza Expansion	LPA Group	(included above)	Patton Construction	\$495,840.00	na	na	(included above)	1%	\$13,500.00	Jul-09	Jan-10	Permits for Toll Plaza Project have been released and the contractor was issued a Notice to Proceed on September 8, 2009.
3C		Wright Brothers Way Improvements Project	LPA Group	(included above)	Moore and Sons Construction Co.	\$1,700,922.00	na	na	(included above)	5%	\$0.00	Jul-09	Mar-10	The contractor has started the site work for the road realignment.
4	North General Aviation Expansion Project	The North GA project includes multiple phases; phase one consisted of tree harvesting and logging operations, phase two included clearing and grubbing of the site and phase three involves the placement and compaction of structural fill material for the site.	AVCON	\$99,100.00	Charah	\$352,690.50	\$25,494.00	7.23%	\$3,700,000.00	75%	\$ 2,840,342.20	Nov-07	Spring 2010	The Second phase of fill placement is underway.

Asheville Regional Airport Authority
Project Report - September 2009

Project Number	Project Name	Project Description	Professional Services Consultant	Professional Services Contract	General Contractor	Original Construction Contract	Change Orders (thru 09/01/09)	Percent of Original Contract	Total Project Cost	Percent Complete	Expensed to Date (thru 09/01/09)	Start Date	End Date	Current Project Status (as of 09/01/09)
5	Triturator Facility	Construction and installation of a dump site to support airline waste disposal and a facility to protect staff from weather elements.	RS&H	\$48,147.00	Perry Bartsch Jr.	\$198,800.00	na	na	\$246,947.00	10%	\$31,859.11	Jul-09	Dec-09	The contractor started shop drawings / submittals and the longer lead time equipment is being procured.
6	Pre-Conditioned Air and Fixed Ground Power	Pre-Conditioned Air and Fixed Ground Power will be added to all boarding bridges for customer comfort and functionality	RS&H	\$8,000.00	Inet Airport System Inc.	\$502,800.00	na	na	\$510,800.00	10%	\$7,402.71	Jul-09	November 2009	Pre-construction activates are being coordinated.
Close-Out Phase														
None														